

MAP OF
VAL VERDE PARK
 BEING
 A PORTION OF TRACT No 8676-M.B.113-22-24.
 A PORTION OF TRACT No 5317-M.B.108-1-5.
 AND
 A PORTION OF THE SOUTH HALF OF
 SEC. 9, T. 4 N. - R. 17 W. S.B.M.

COUNTY SURVEYORS MAP No B-325
 SHEET No 3 OF 3 SHEETS
 SCALE: 1 INCH = 50 FT.

JOB NUMBER 7918
 ALFRED JONES-COUNTY SURVEYOR
 SURVEYED NOV. 1929 TO JULY, 1942.

SURVEYED ON REQUEST OF THE COUNTY
 FORESTER AND FIRE WARDEN PER RULE #1, ORD. 929,
 BY LETTER DATED MAR. 14TH 1930 AND AS AUTHORIZED
 BY THE BOARD OF SUPERVISORS IN THEIR ORDER OF
 JANUARY 13TH 1930.

BEARINGS ARE BASED ON THE BEARING OF
 SOUTH LINE OF TRACT No 5317, M.B. 108-1-5.

F.B. 327-112-100 = F.B. 579-5-21.
 FIELD WORK BY... F.C. HOWARD

OFFICE WORK BY... A.E. TIMMONS.
 CHECKED BY... R.W. B. ALLISTER
 I.M. 264-077

CSB-325-3

A1 of A2

FOR TOPOGRAPHY SEE C.S.B-1374-2,3,4
 Acreage added 11-10-33 ced.

FOR TOPOGRAPHY SEE C.S.B-1374-2,3,4

CONTINUED ON C.S.B-325-2

SE 1/4, SECTION 9, T. 4 N., R. 17 W. S.B.M.

LOTS 414 TO 433
 D-97-266 OR 759-299

LOTS 419 TO 427
 D-97-266 OR 759-299

LOTS 412 TO 418
 D-97-266 OR 759-299

LOTS 412 TO 418
 D-97-266 OR 759-299

LOTS 412 TO 418
 D-97-266 OR 759-299

LOTS 412 TO 418
 D-97-266 OR 759-299

LOTS 412 TO 418
 D-97-266 OR 759-299

LOTS 412 TO 418
 D-97-266 OR 759-299

LOTS 412 TO 418
 D-97-266 OR 759-299

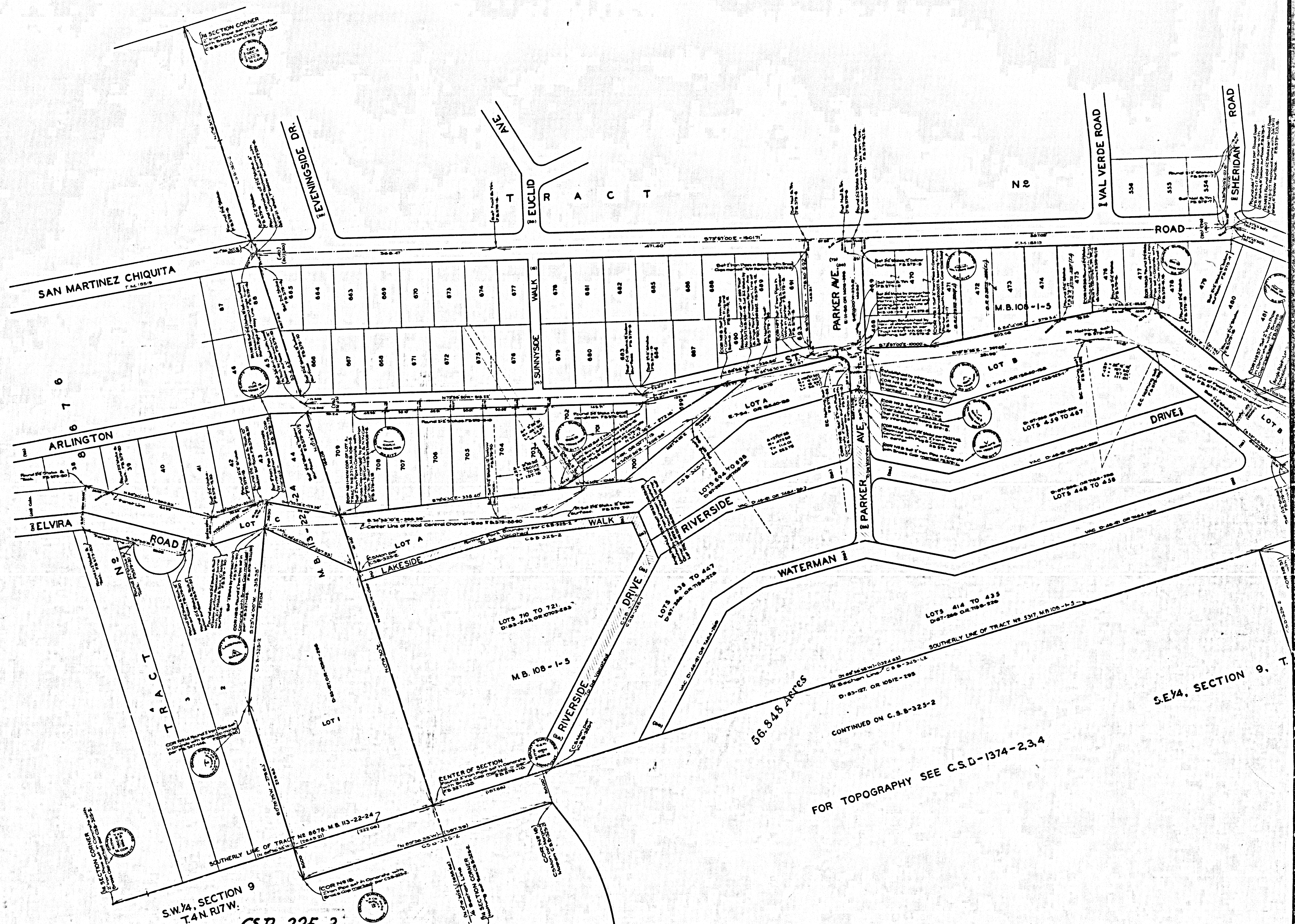
LOTS 412 TO 418
 D-97-266 OR 759-299

LOTS 412 TO 418
 D-97-266 OR 759-299

LOTS 412 TO 418
 D-97-266 OR 759-299

CSB-325-3
SHEET 2 OF 3 SHEETS
COUNTY OF VAL VERDE, TEXAS

SHEET 2 OF 3 SHEETS
COUNTY OF VAL VERDE, TEXAS



S.W. 1/4 SECTION 9
T.4N. R.17W.
CSB-325-3
A2 of A2

FOR TOPOGRAPHY SEE C.S.D.-1374-2,3,4

S.E. 1/4 SECTION 9, T.