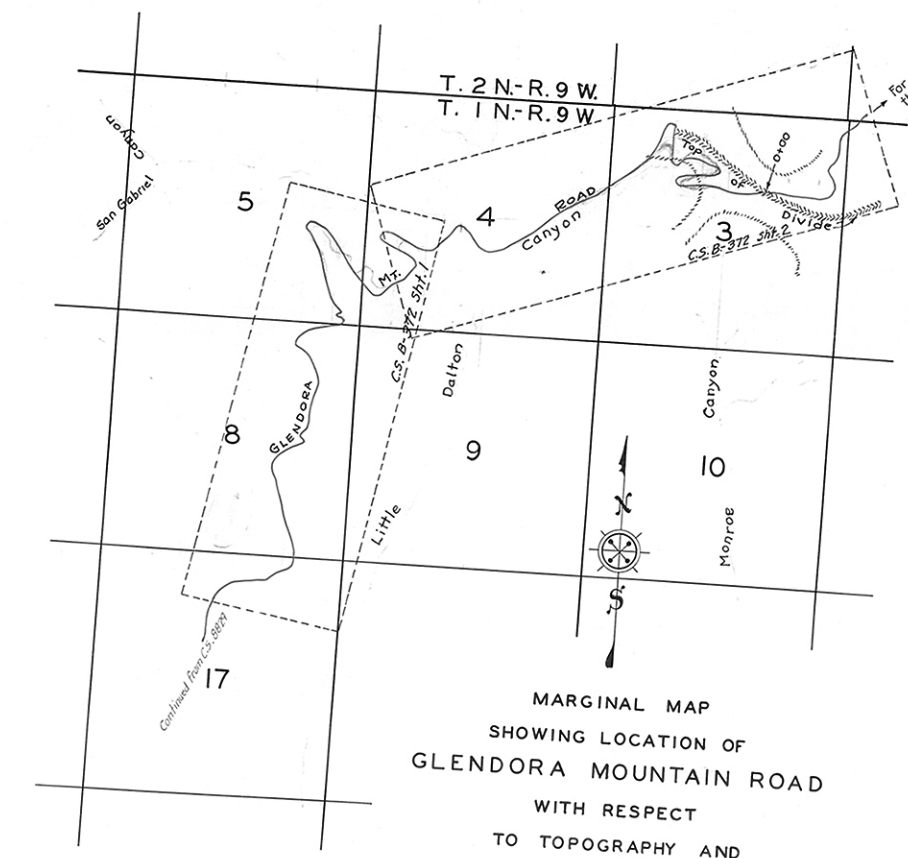


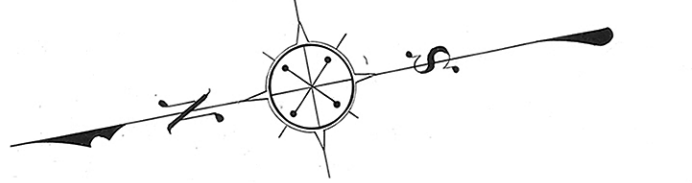
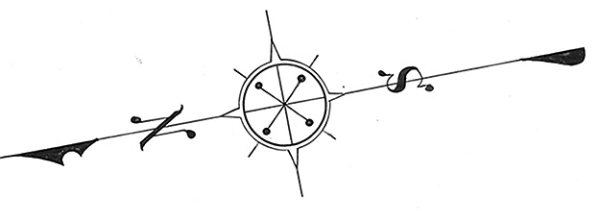
MAP OF
GLENDDORA MOUNTAIN ROAD
 FROM
 TOP OF DIVIDE BETWEEN SAN GABRIEL CANYON
 AND LITTLE DALTON CANYON
 TO
 SUMMIT IN SEC. 3 T.1N. R.9W S.B.M.

COUNTY SURVEYORS MAP NO. B372
 SHEET NO. 1 OF 2 SHEETS
 SCALE - 1 INCH = 100 FT.
 WORK ORDER NO. 766
 J.E. ROCKHOLD - COUNTY SURVEYOR
 SURVEYED NOV. 1928 - FEB. 1929
 SURVEYED UNDER INSTRUCTIONS OF THE
 BOARD OF SUPERVISORS PER ORDER DATED
 JUNE 27, 1927
 BEARINGS ARE BASED ON A SOLAR
 OBSERVATION PER F.B. 363-4
 F.B. 383-3, 75
 FIELD WORK BY T.J. STEVENSON
 OFFICE WORK BY W.H. BLACHMER
 HUMBOLDT GINS
 CHECKED BY F.A. WOOD

NOTE: Mile posts designate distances from intersection
 of Glendora Mountain Road and Highland Avenue.



MARGINAL MAP
 SHOWING LOCATION OF
 GLENDDORA MOUNTAIN ROAD
 WITH RESPECT
 TO TOPOGRAPHY AND
 APPROXIMATE SECTION LINES.
 SCALE - 1 INCH = 2000 FEET.



CONTINUED ON C.S.B. 372-SHT. 2

CONTINUED FROM
 C.S.B. 372-SHT. 1