

MAP OF ELVD
PALMDALE ELIZABETH LAKE ROAD
 10th ST FROM WEST
 GRAPE STREET
 SIERRATO HWY
 ATLANTIC AVENUE
 COUNTY SURVEYORS MAP NO. B-395
 SCALE - 1 INCH = 100 FT.

WORK ORDER NO. 107
 J.E. ROCKHOLD - COUNTY SURVEYOR
 SURVEYED FEB. TO JUNE 1929
 BEARINGS ARE BASED ON THE BEARING OF
 THE EAST LINE OF SEC. 26, T. 6 N. R. 12 W. AS
 SHOWN ON C.S. 8736

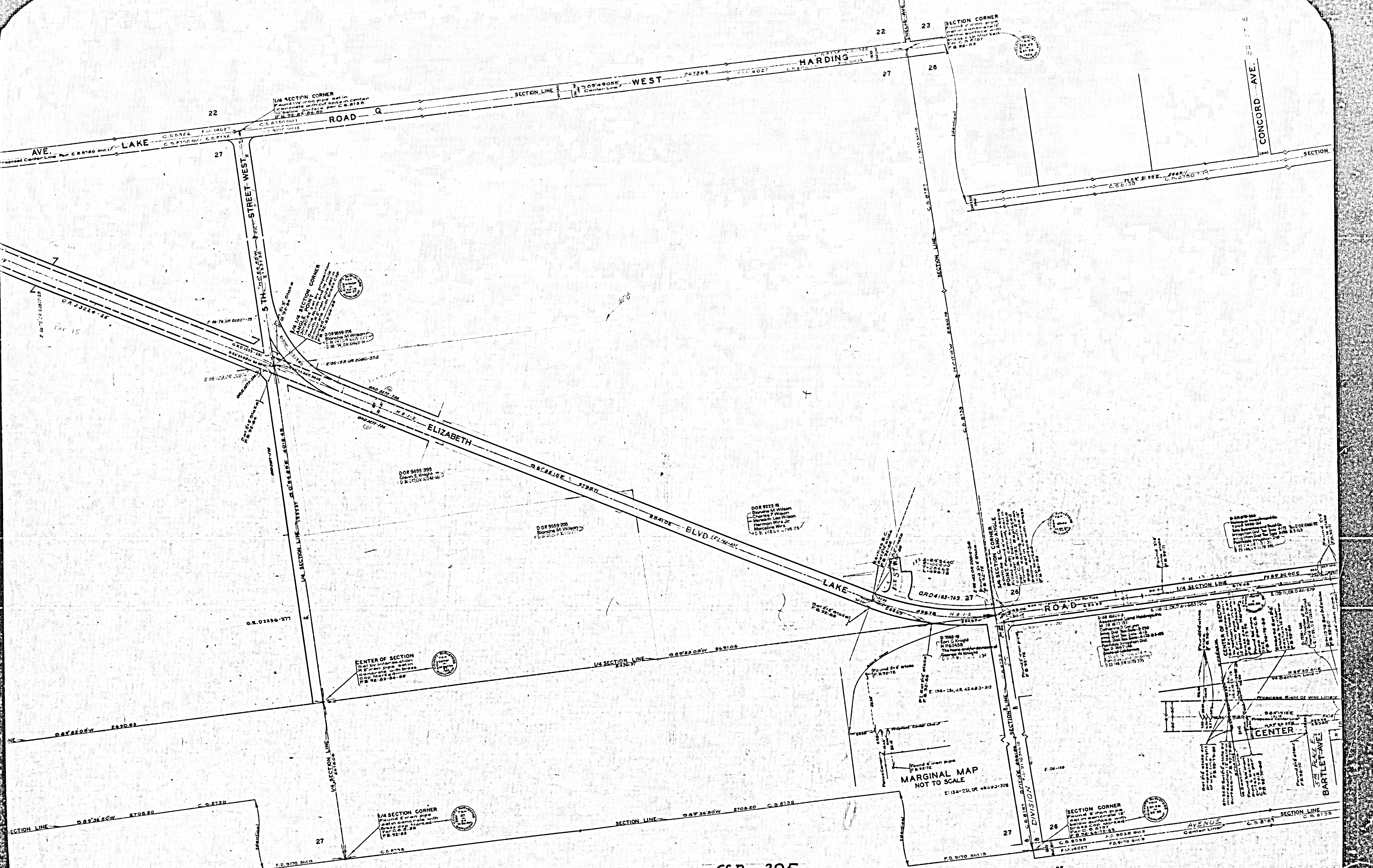
F.B. 92-67 TO 86

FIELD WORK BY E. ROSECRANS
 OFFICE WORK BY BERT M'ATEE
 CHECKED BY D.M. FINLEY

1 M. 324-237
 1 M. 300-237

For change of street names see C.S. B-717-D, 49-125 and E-149-32
 N.P. 3 road along 1/4 Sec. line in Sec. 27 named 5th St West, D-49-125

CSB-395
 A1 of A4



1/4 SECTION CORNER
Found iron pipe set in
concrete with cut pipe in center
below surface per C.S. 8138
F.B. 92-88

1/4 SECTION CORNER
Found iron pipe set in
concrete with cut pipe in center
below surface per C.S. 8138
F.B. 92-88

CENTER OF SECTION
Set by intersection
of iron pipe set in
concrete with
C.S. 8138
F.B. 92-88

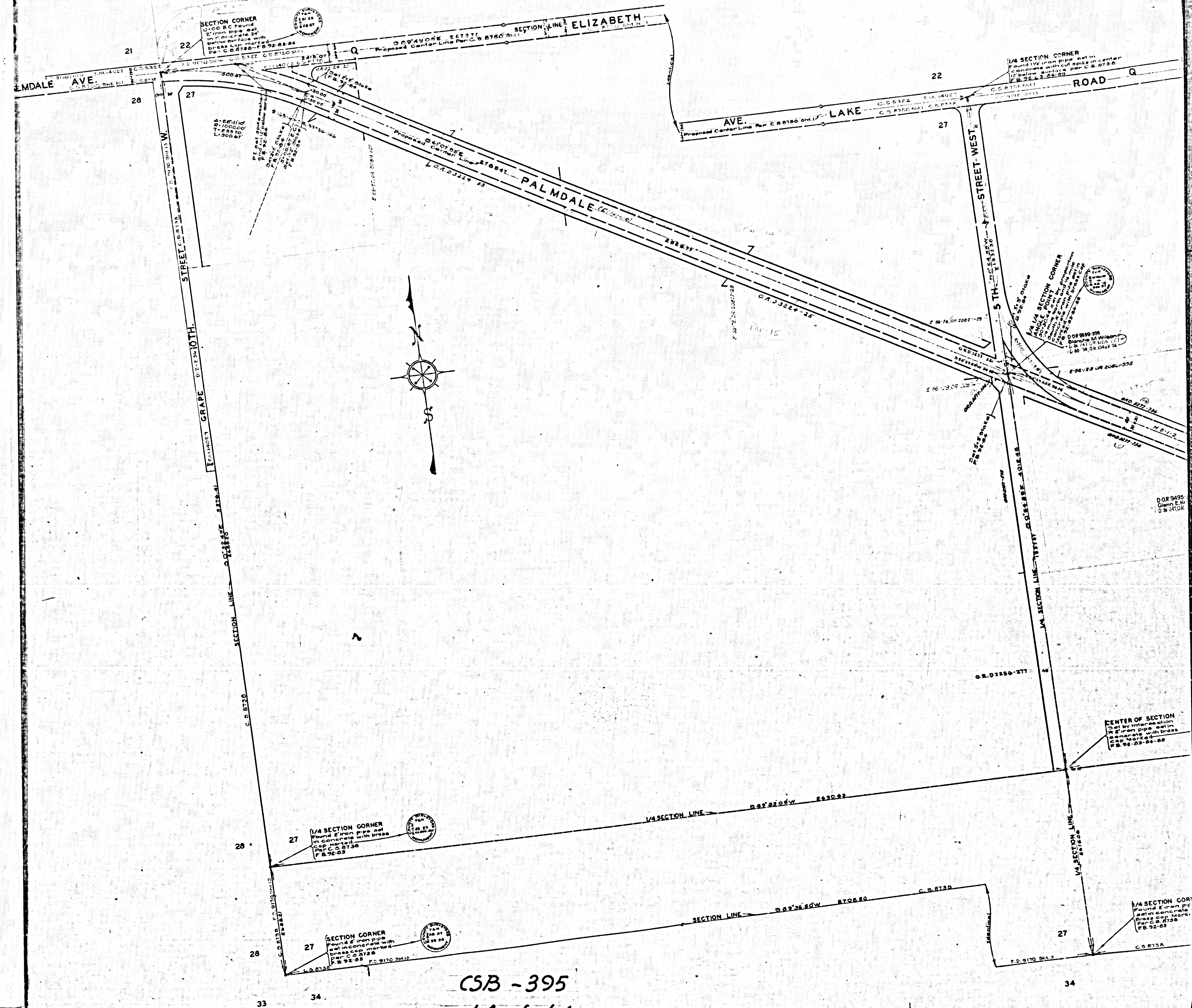
1/4 SECTION CORNER
Found iron pipe
set in concrete with
cut pipe in center
per C.S. 8138
F.B. 92-88

SECTION CORNER
Found iron pipe
set in concrete with
cut pipe in center
below surface with
C.S. 8138
F.B. 92-88

MARGINAL MAP
NOT TO SCALE

SECTION CORNER
Found iron pipe
set in concrete with
cut pipe in center
below surface with
C.S. 8138
F.B. 92-88

CSB-395
A3 of A4



CSB - 395
 AA of AA



CSB - 395
A2 of A4

SECTION CORNER
Found iron pipe
set in concrete
below surface with
brass cap marked
P.C. 8107
P.B. 92-03

1/4 SECTION CORNER
Found iron pipe
set in concrete
below surface with
brass cap marked
P.C. 8107
P.B. 92-03

SECTION CORNER
Found iron pipe
set in concrete
below surface with
brass cap marked
P.C. 8107
P.B. 92-03

SECTION CORNER
Found iron pipe
set in concrete
below surface with
brass cap marked
P.C. 8107
P.B. 92-03

1/4 SECTION CORNER
Found iron pipe
set in concrete
below surface with
brass cap marked
P.C. 8107
P.B. 92-03

MARGINAL MAP
SCALE 1"=30 FT

SECTION CORNER
Found iron pipe
set in concrete
below surface with
brass cap marked
P.C. 8107
P.B. 92-03

SECTION CORNER
Found iron pipe
set in concrete
below surface with
brass cap marked
P.C. 8107
P.B. 92-03

SECTION CORNER
Found iron pipe
set in concrete
below surface with
brass cap marked
P.C. 8107
P.B. 92-03

SECTION CORNER
Found iron pipe
set in concrete
below surface with
brass cap marked
P.C. 8107
P.B. 92-03

SECTION CORNER
Found iron pipe
set in concrete
below surface with
brass cap marked
P.C. 8107
P.B. 92-03

SECTION CORNER
Found iron pipe
set in concrete
below surface with
brass cap marked
P.C. 8107
P.B. 92-03

SECTION CORNER
Found iron pipe
set in concrete
below surface with
brass cap marked
P.C. 8107
P.B. 92-03