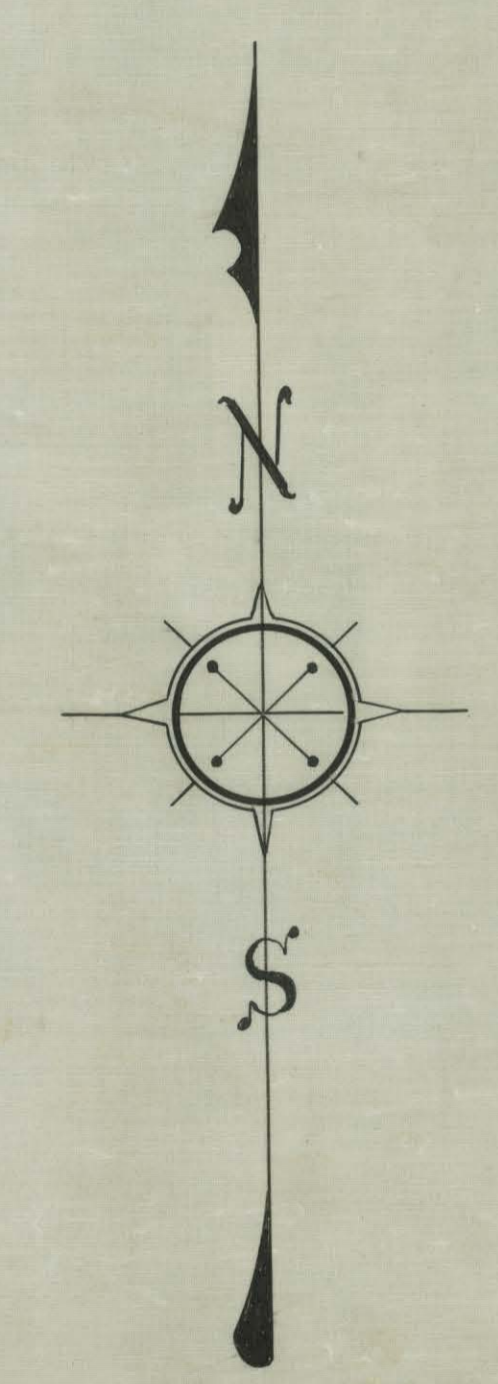
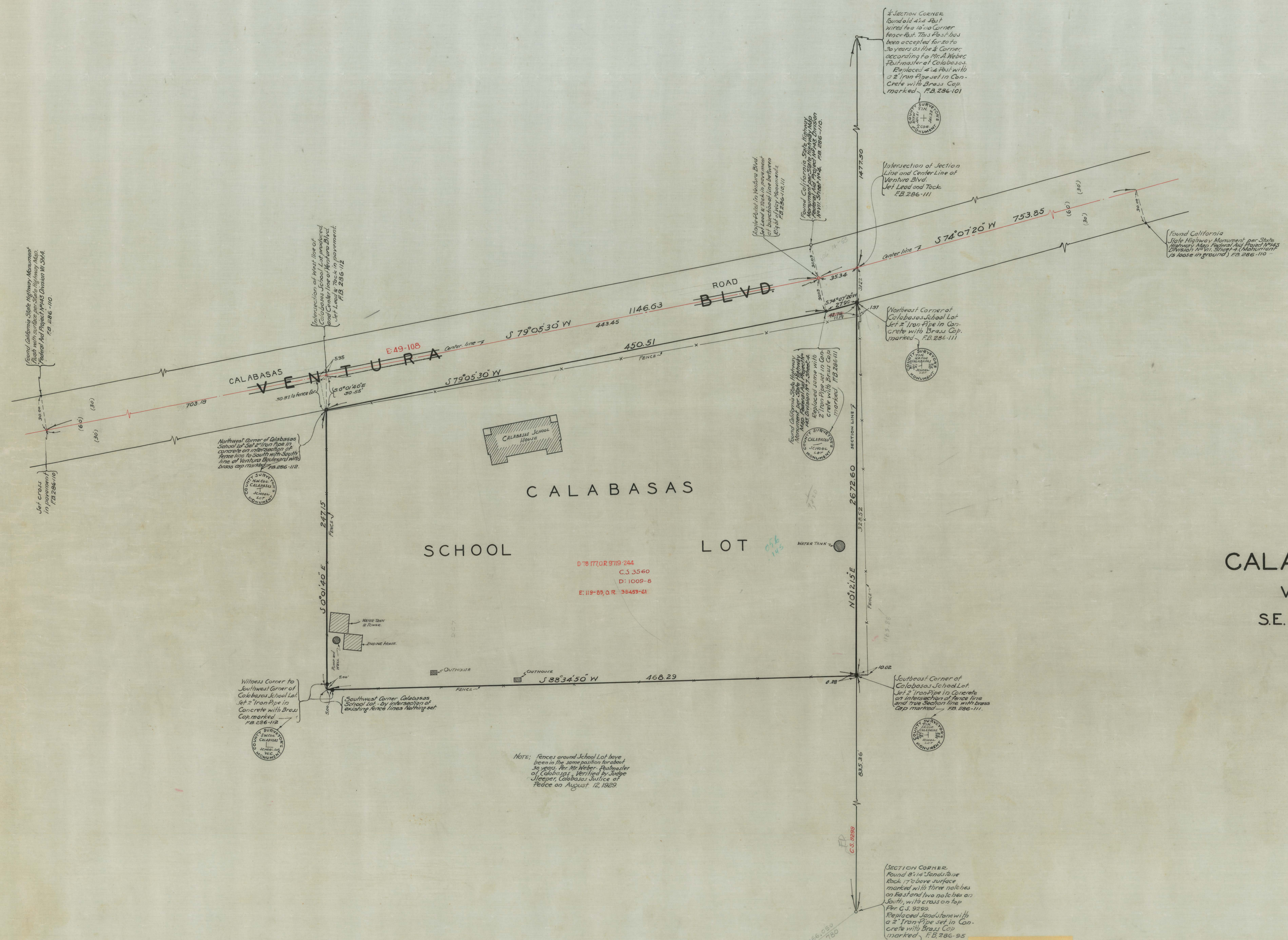


124-BCD



MAP OF
CALABASAS SCHOOL LOT.
 ON
 VENTURA BOULEVARD
 IN
 S.E. ¼ SEC. 21. T.1N. R.17. W. S. B. M.
 COUNTY SURVEYORS MAP N° B-437
 SCALE - 1 INCH = 30 FT.

WORK ORDER N° 952
 J.E. ROCKHOLD - COUNTY SURVEYOR
 SURVEYED - JULY, 1929
 BEARINGS ARE BASED ON THE BEARING OF
 VENTURA BOULEVARD PER FB. 286-93
 FB. 286-93-112
 FIELD WORK BY...A. BRACKETT.
 OFFICE WORK BY...J. W. BOYD.
 J. V. MORIN.
 CHECKED BY...HUM. HIGGINS.

NOTE: Fences around School Lot have been in the same position for about 30 years. Per Mr. Weber, Postmaster of Calabasas, testified by Judge J. Peiper, Calabasas Justice of Peace on August 12, 1929.

CSB-437
 1 of 1

CSB-437