

ANGELES

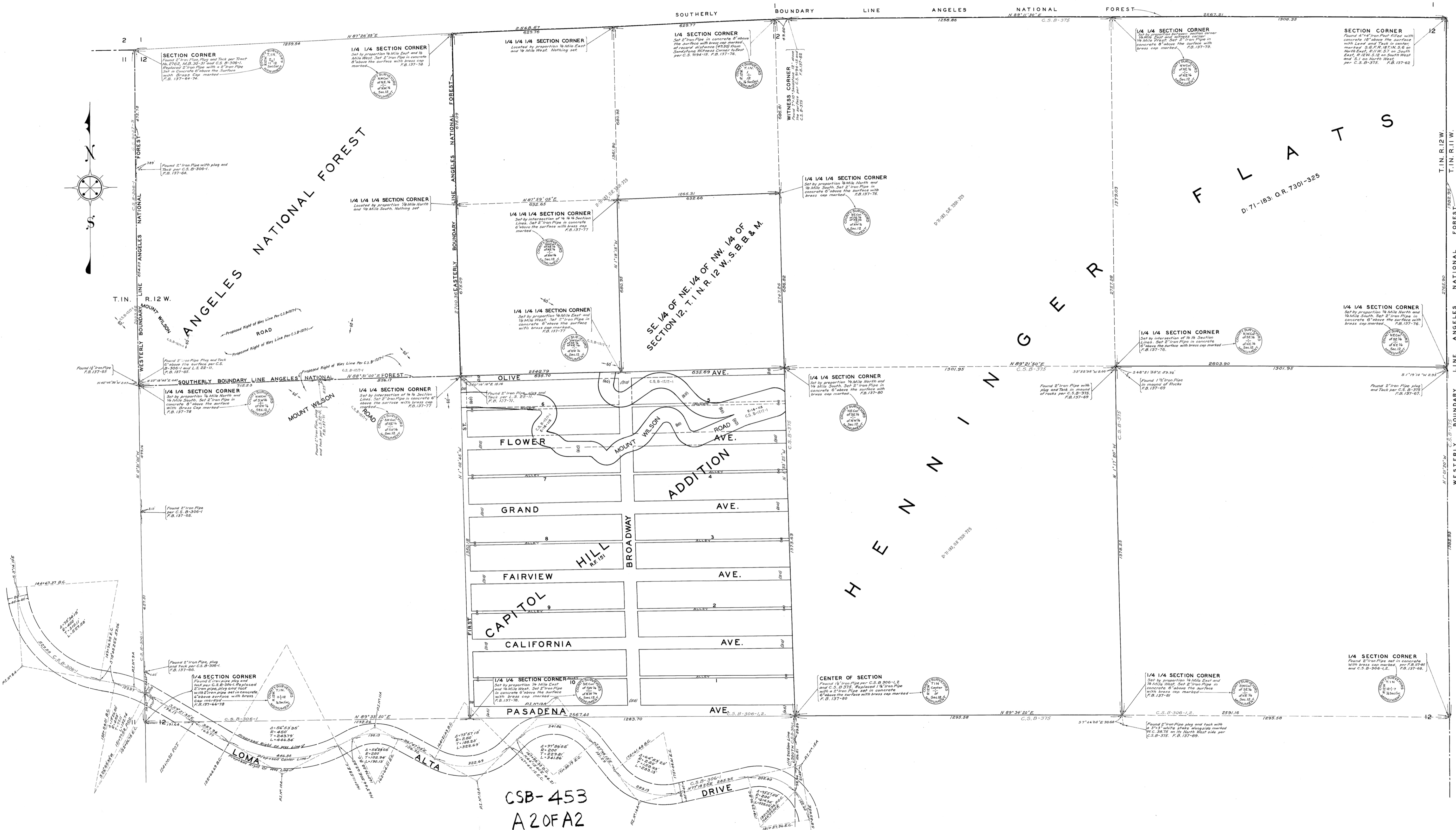
NATIONAL

FOREST

FOREST

NATIONAL

ANGELES



MAP OF  
**HENNINGER FLATS**  
 BEING THE  
 NORTH 1/2 OF THE NE. 1/4, THE SW. 1/4 OF THE NE. 1/4,  
 THE NORTH 1/2 OF THE NE. 1/4 OF THE NW. 1/4 AND THE  
 SW. 1/4 OF THE NE. 1/4 OF THE NW. 1/4 OF SEC. 12, T.1N.R.12 W.

COUNTY SURVEYOR'S MAP No. B-453  
 SCALE - 1 INCH = 100 FT.  
 WORK ORDER No. 917  
 J.E. ROCKHOLD, COUNTY SURVEYOR  
 SURVEYED OCTOBER 1928 TO SEPTEMBER 1929  
 SURVEYED UNDER INSTRUCTIONS OF THE  
 BOARD OF SUPERVISORS PER ORDER DATED  
 AUGUST 20, 1928  
 BEARINGS ARE BASED ON THE SOUTH LINE  
 OF THE NORTH WEST 1/4 OF  
 SEC. 12, T.1N.R.12 W. AS SHOWN ON C.S.B.-306 SHT. No. 1

F. B. 137-55 TO 81  
 FIELD WORK BY A. E. DUNN  
 J. W. BOYD  
 OFFICE WORK BY G. F. HOLBROOK  
 CHECKED BY K. R. McPHERSON  
 D. M. FINLEY

FOR TOPOGRAPHY SEE C.S.B.-1037

Sheet 98

NOTE - This map was revised by addition of  
 Mount Wilson Road, West 1/4 Sec. 12, T.1N.R.12 W.  
 Revised, Nov. 1947, J. D. Pike.

CSB-453  
 A 2 OF A 2

CSB-453  
 A1 OF A2