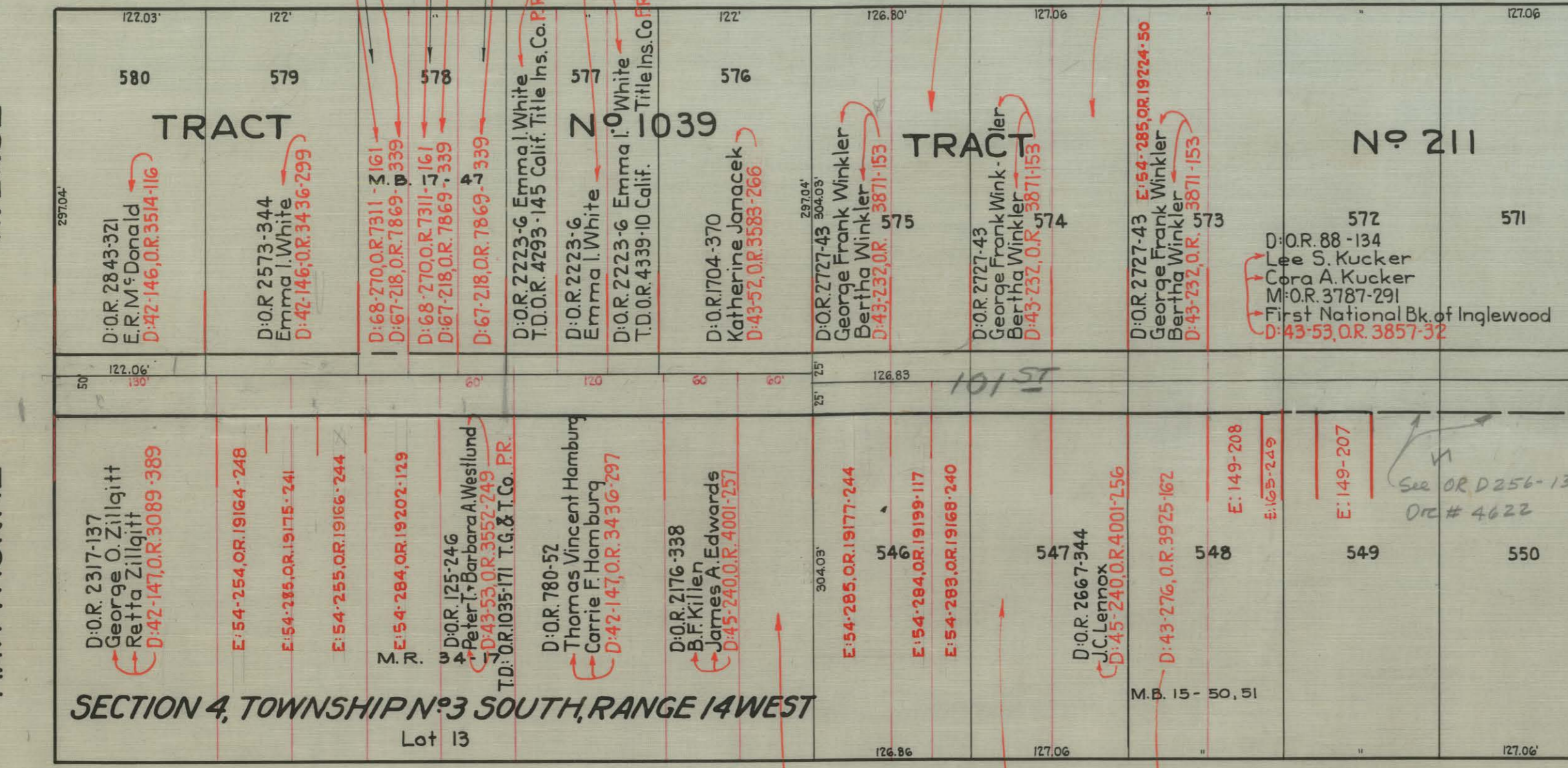


Boundary Line of City of Inglewood

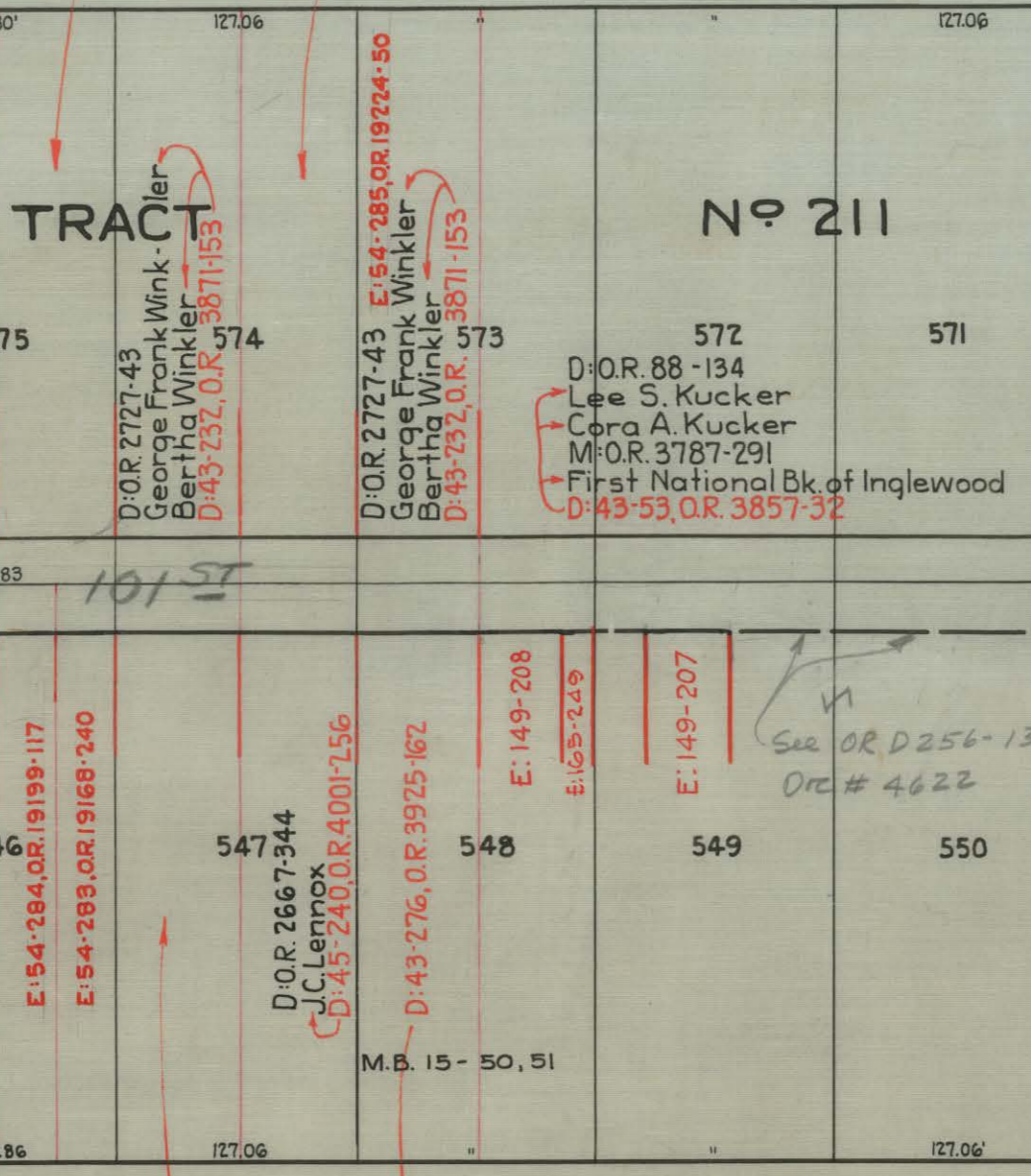
HAWTHORNE AVENUE

LOCKHAVEN TRACT



CENTURY PINE

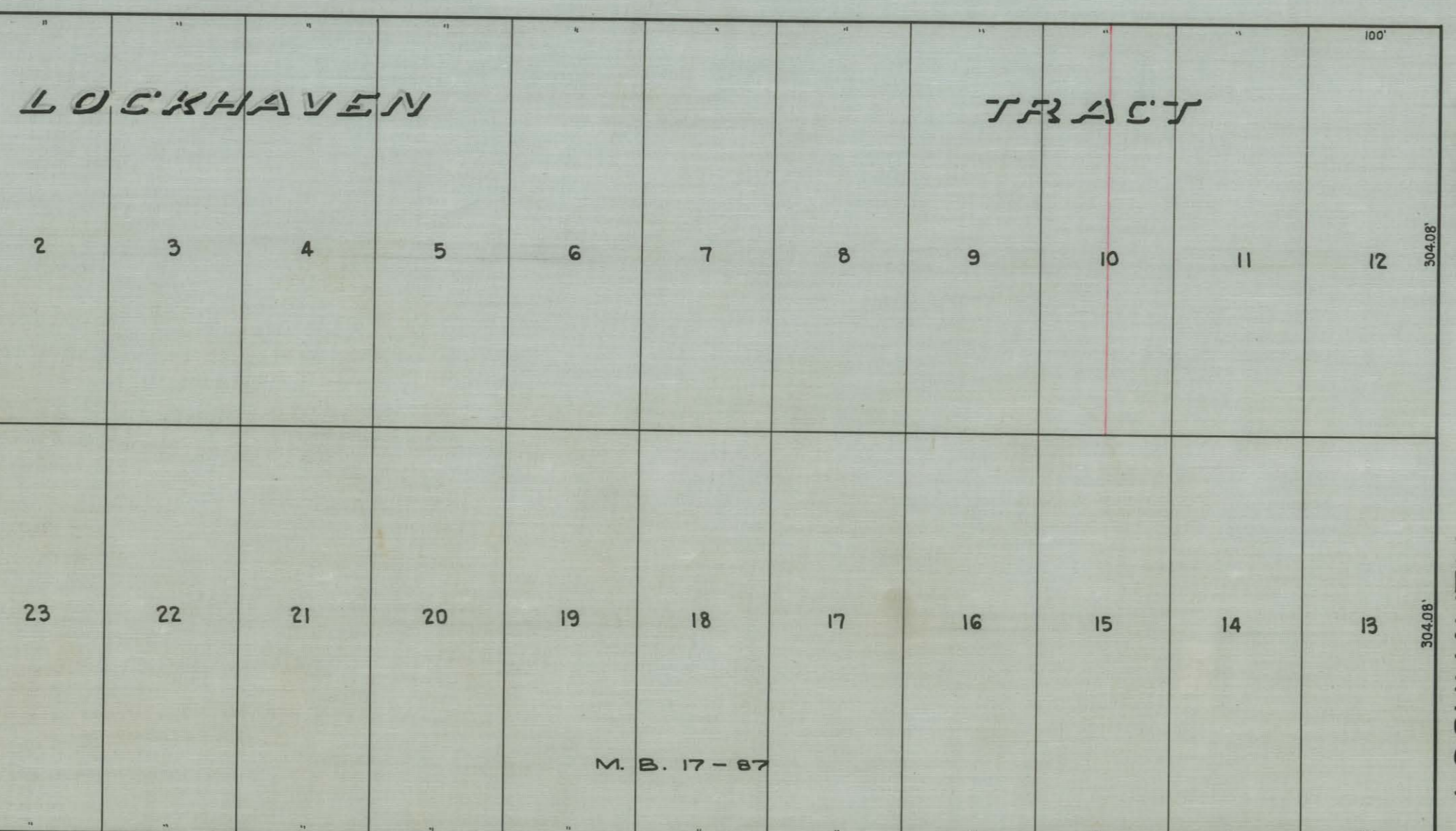
LOCKHAVEN TRACT



Boundary Line of City of Inglewood

PRAIRIE AVENUE

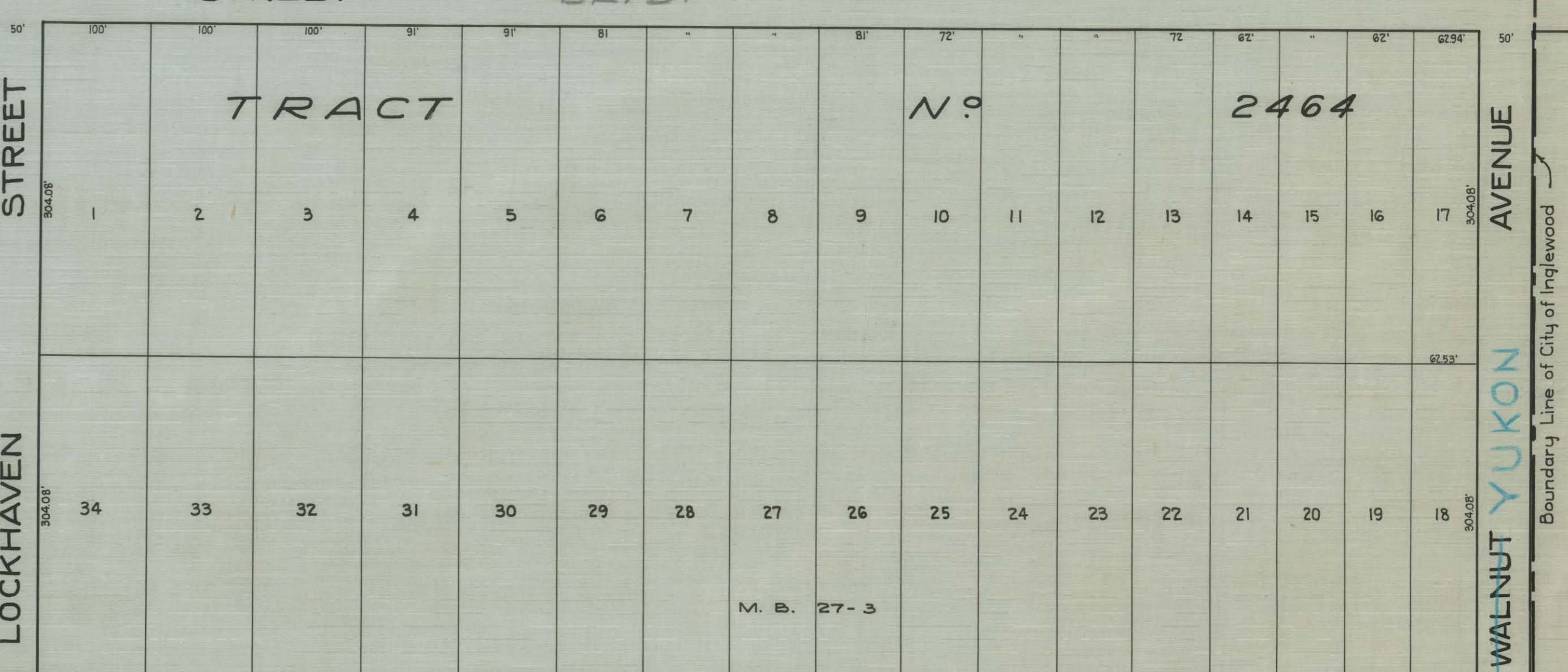
LOCKHAVEN TRACT



Boundary Line of City of Inglewood

WALNUT AVENUE

LOCKHAVEN TRACT



101st MAP OF ST.
MCDONALD PLACE
FROM HAWTHORNE AVENUE TO WALNUT AVENUE
YUKON

COUNTY SURVEYOR'S MAP NO B-480
Scale: 1"=100'
Sht. 24

This map compiled by the County Surveyor
for the purpose of showing deed references only.
Dec. 1929

Pine St. changed to Century Blvd. D:43-129
McDonald Pl. " " 101st St. D:48-229
Willow St. " " 102nd St. "

CSB-480
A2 OF A2

CSB-480
A1 OF A2