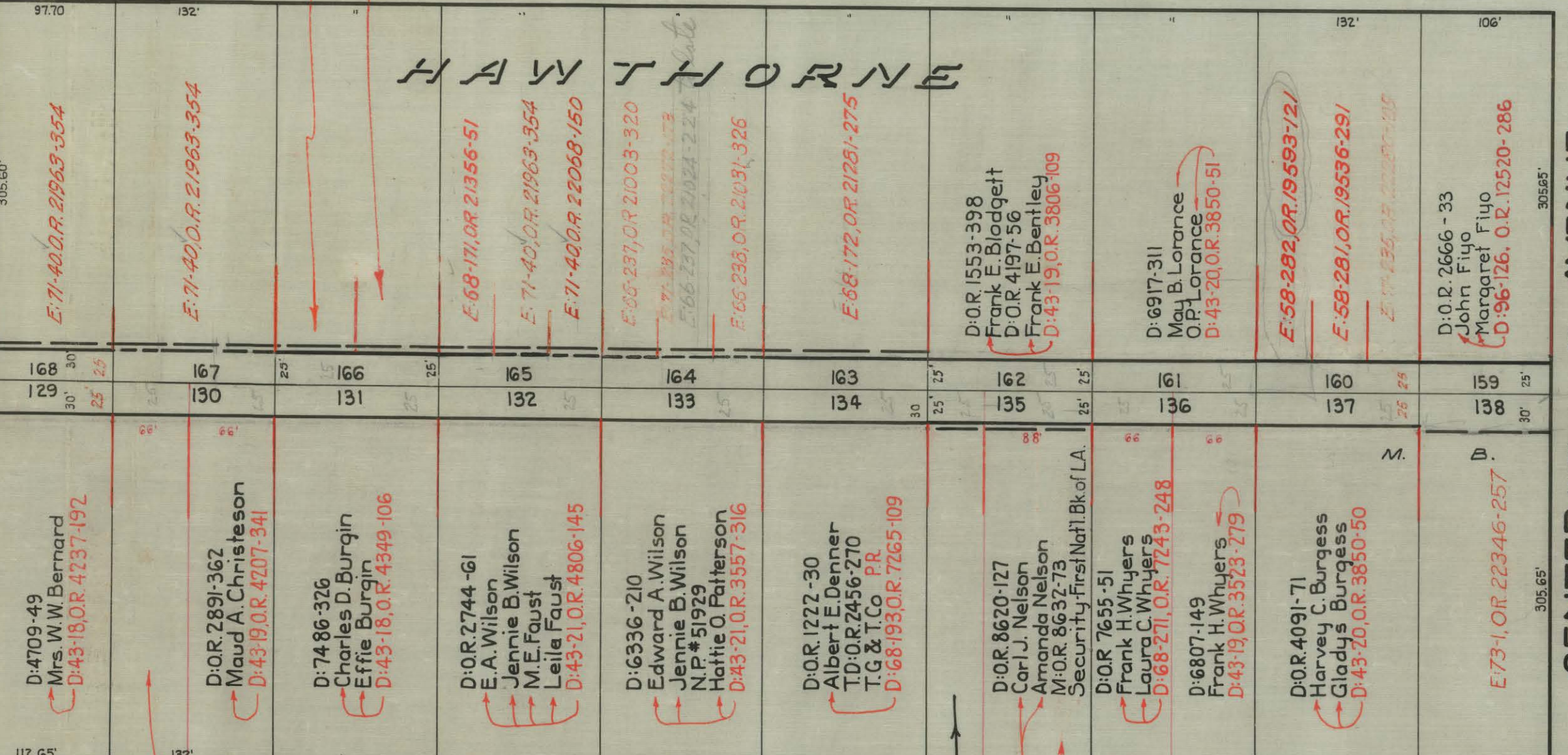


LENNOX AVENUE BLVD. 305.60'



D:7408-201
John Cairncross
Cora May Cairncross
D:OR. 1531-380, Abe Friendly
D:43-21, OR. 4805-163

D:71-30, OR. 7280-730 (25)
D:OR. 6563-195
Stephen A. Lanning Jr.
Salige R. Lanning

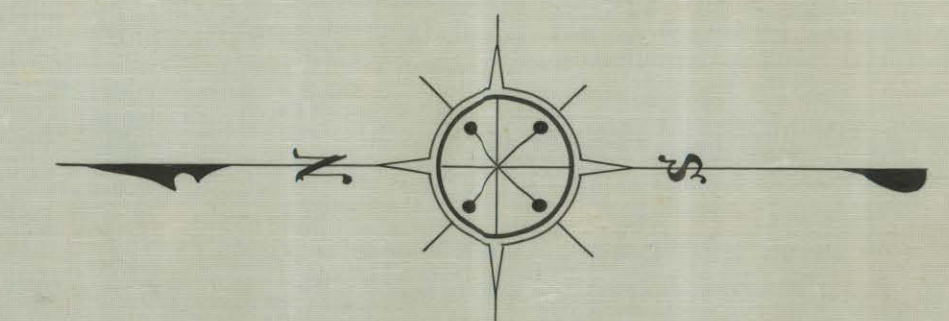
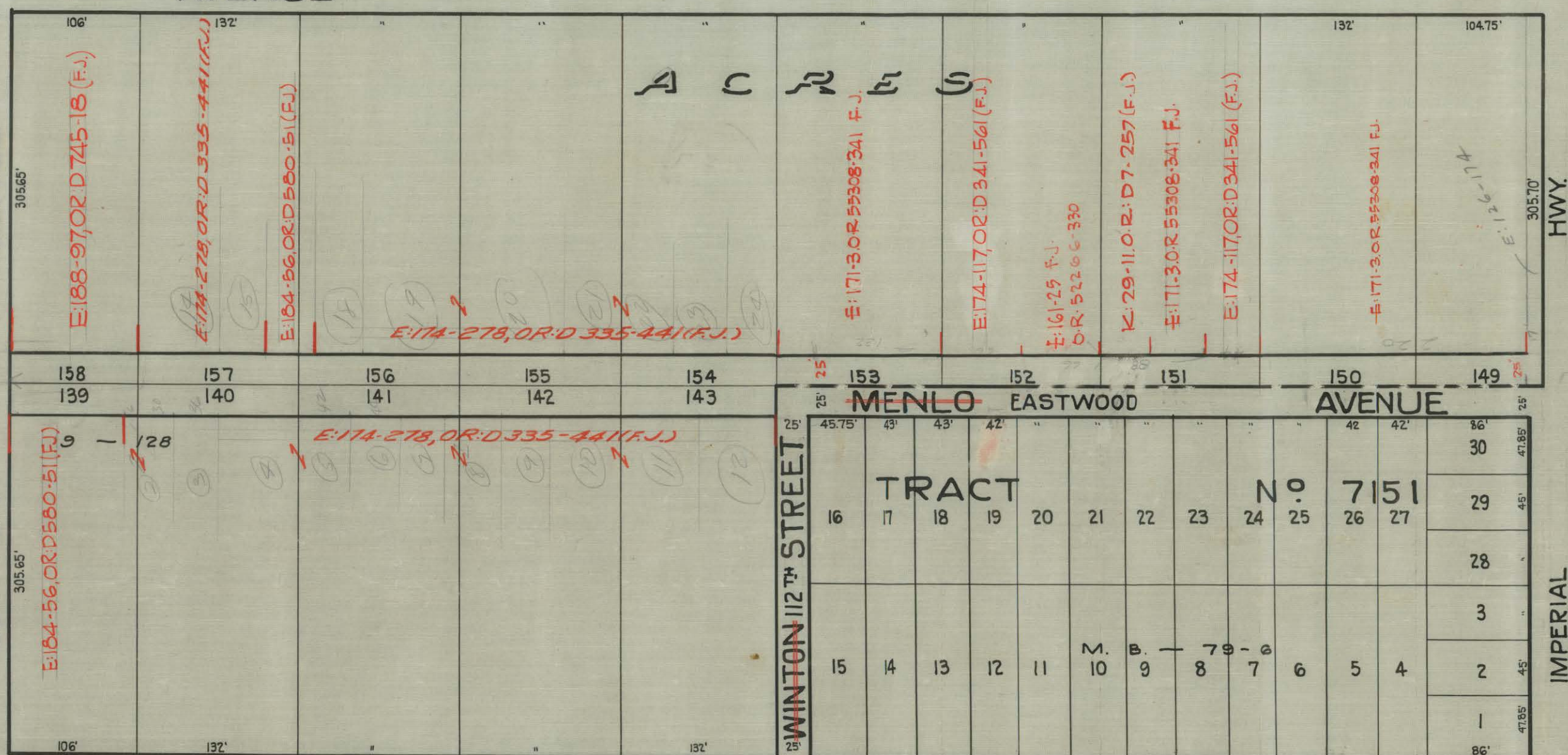
D:83-116, OR. 10464-346 (25)
D:68-130, OR. 8781-97 (25)

E:21-65, OR. 15474-233
D:O.R. 19-181
William Madison Ellis
Trelena E. Ellis
E:12-34, O.R. 13902-356 (25)

OXFORD OSAGE

HAWTHORNE

CENTER 111TH ST. 305.65'



MAP OF
MENLO AVENUE
FROM LENNOX AVENUE TO 114TH STREET.

COUNTY SURVEYOR'S MAP N^o B-482
Scale: 1" = 100'

Sh. 24 3-5

This map compiled by the County Surveyor
for the purpose of showing deed references only.
Dec. 1929

114th St. changed to Imperial Highway - D:49-97

CSB-482
A1 OF A1