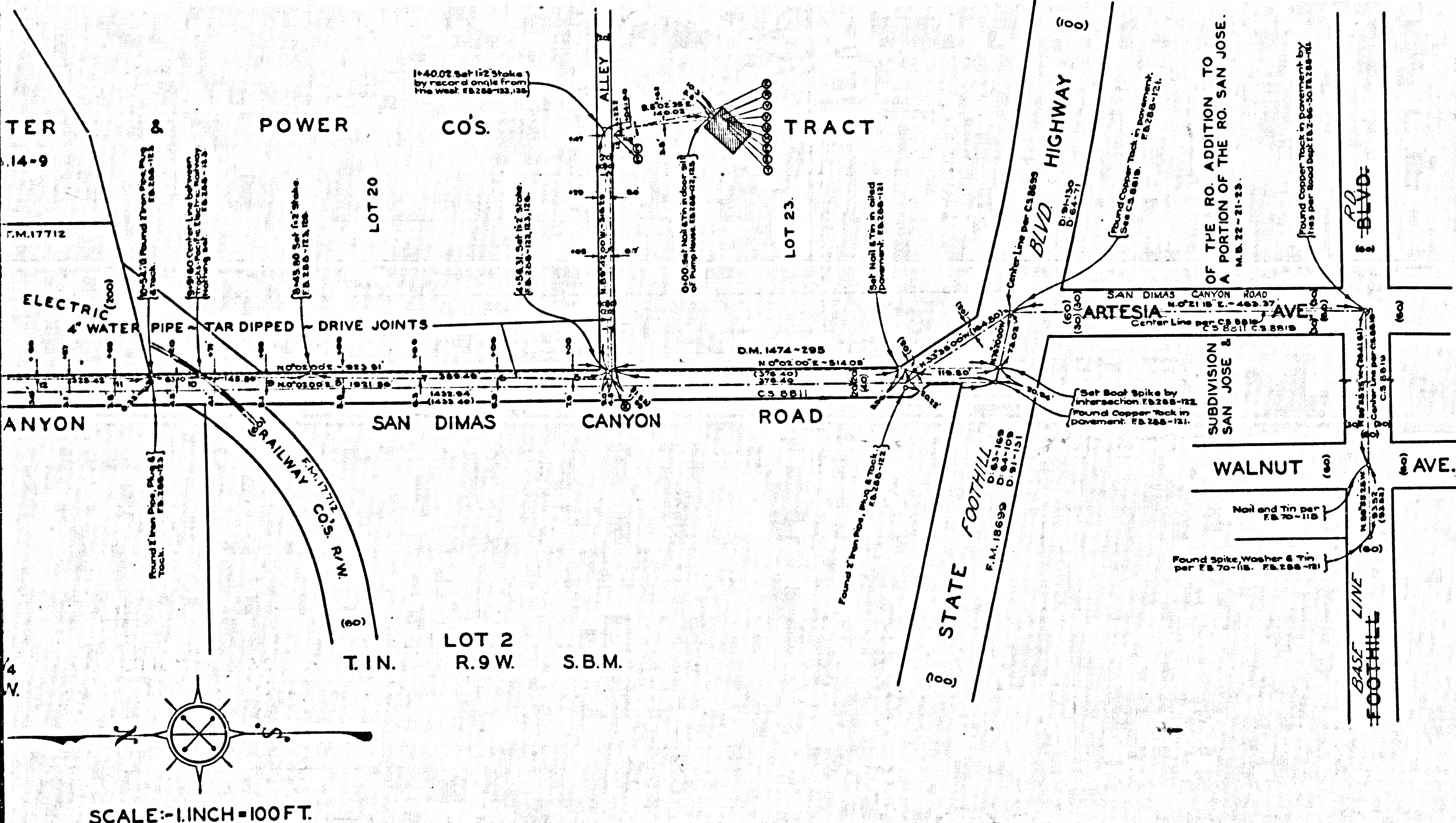


SCALE: HORIZONTAL... 1 INCH=100 FT.  
VERTICAL... 1 INCH=40 FT.



MAP OF  
PIPE LINES IN SAN DIMAS FOOTHILL PARK  
IN  
SECTION 35, T.1N. R.9W. S.B.M.  
COUNTY SURVEYORS MAP NO. B-601  
SHEET NO. 2 OF SHEETS.

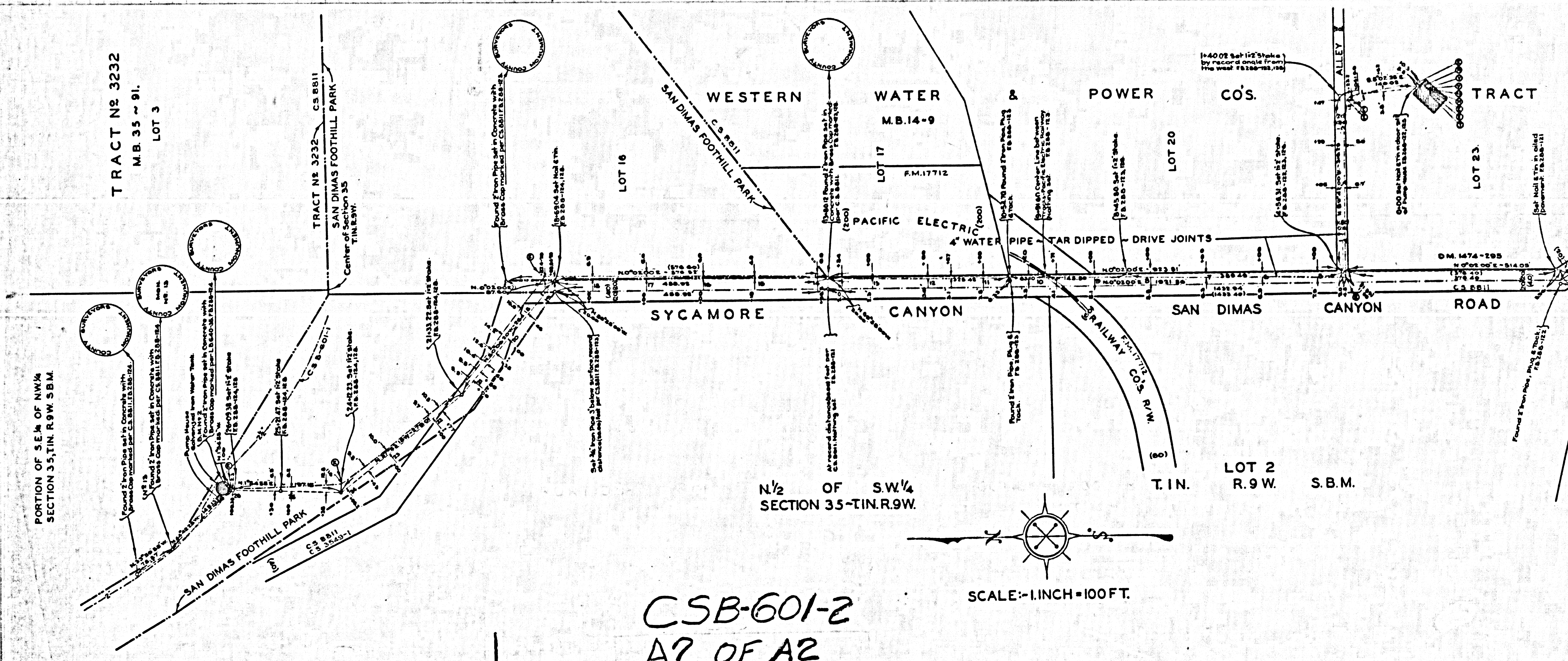
SCALE AS NOTED ON MAP AND PROFILE  
JOB NUMBER 7030.  
J. ROCKHOLD COUNTY SURVEYOR  
SURVEYED SEPTEMBER 1933.  
BEARINGS ARE BASED ON THE BEARING OF  
SYCAMORE CANYON ROAD PER C.S. 881L  
F.B. 288-121-128  
L.B. 640-93-105  
FIELD WORK BY A.N. HELLSTROM  
OFFICE WORK BY R.W. MALLISTER  
CHECKED BY... K.R. M. PHERSON  
INDEX 48

LOCATION	FIELD BOOK SYMBOL	ITEM	SIZE	REMARKS
Pump House FB 288-128	⊙	2" x 20' Pipe from 3 Cycle motor driven Pump	2"	Pump to 45° Elbow
Pump House FB 288-128	⊙	Elbow 45° x 2 1/2" of 2" Pipe to 4" Elbow	1"	45° El to 45° El
Pump House FB 288-128	⊙	Elbow 2 1/2" x 2 1/2" of 2" Pipe to 2" Meter Box	1"	45° El to Meter Box
Pump House FB 288-128	⊙	Water Box & 16' of 2" Pipe to 2" Union	2"	Meter Box to Union
Pump House FB 288-128	⊙	Union of 2" of 2" Pipe to 2" Check Valve	2"	Union to Check Valve
Pump House FB 288-128	⊙	2" Gate Valve	2"	Check to Gate Valve
Pump House FB 288-128	⊙	Reducer 4" to 2" of 2" Pipe to 2" Gate Valve	2"	Gate Valve to Reducer
Pump House FB 288-128	⊙	Reducer 2" to 1 1/2" of 2" Pipe to 2" Galvanized Iron Pipe	1 1/2"	2" to 1 1/2"
0-00-8	⊙	Elbow	4"	115" Bend
1-23-8	⊙	Elbow	4"	115" Bend
1-27-8	⊙	Elbow	4"	115" Bend
4-18-8	⊙	Elbow	4"	115" Bend
18-27-8	⊙	Elbow	4"	115" Bend
24-02-8	⊙	Elbow	4"	115" Bend
28-110	⊙	Elbow 2-1/2" x 2" of 2" Pipe	2"	Top of 2" Pipe to Top of Tank

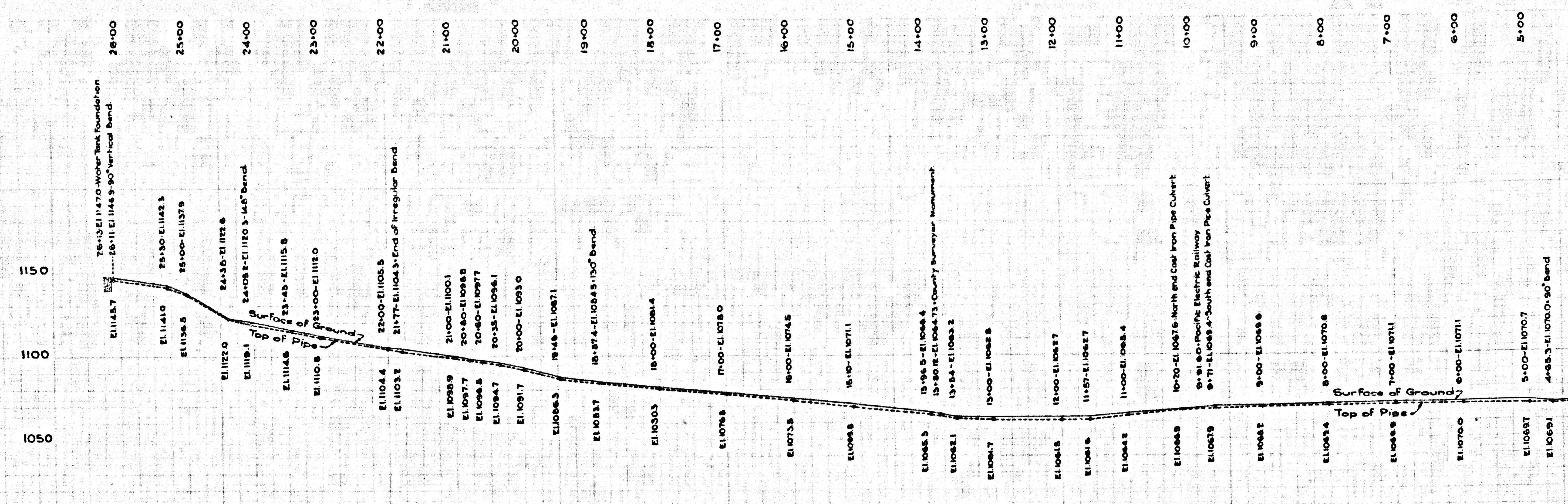
CSB-601-2  
A1 OF A2

COUNTY SURVEYORS FILE NO. 213 B-901

SHEET NO. 213-E12-2



CSB-601-2  
A2 OF A2



SCALE: HORIZONTAL... 1 INCH = 100 FT.  
VERTICAL... 1 INCH = 40 FT.

SCALE: 1 INCH = 100 FT.