

CHERRY MAP OF AVE  
**GARFIELD AVENUE**  
 FROM  
 SOUTH STREET  
 TO  
 WARDLOW ROAD

COUNTY SURVEYORS MAP NO B-605.  
 SCALE - 1 INCH = 100 FT.

ACQUISITION AND IMPROVEMENT DISTRICT NO. 268.  
 WORK ORDER NO. 4286.

J. ROCKHOLD - COUNTY SURVEYOR  
 SURVEYED NOV.-DEC. 1929.

SURVEYED UNDER INSTRUCTIONS OF THE  
 BOARD OF SUPERVISORS PER ORDER DATED  
 DECEMBER 4, 1929.

BEARINGS ARE BASED ON THE BEARING OF  
 SAN ANTONIO DRIVE PER C.S.B. 315, SHEET L.

P.B. 427-7-59, 111-113.

FIELD WORK BY F.J. McNEAL

OFFICE WORK BY F.A. WOOD,  
 D.A. WHITE.

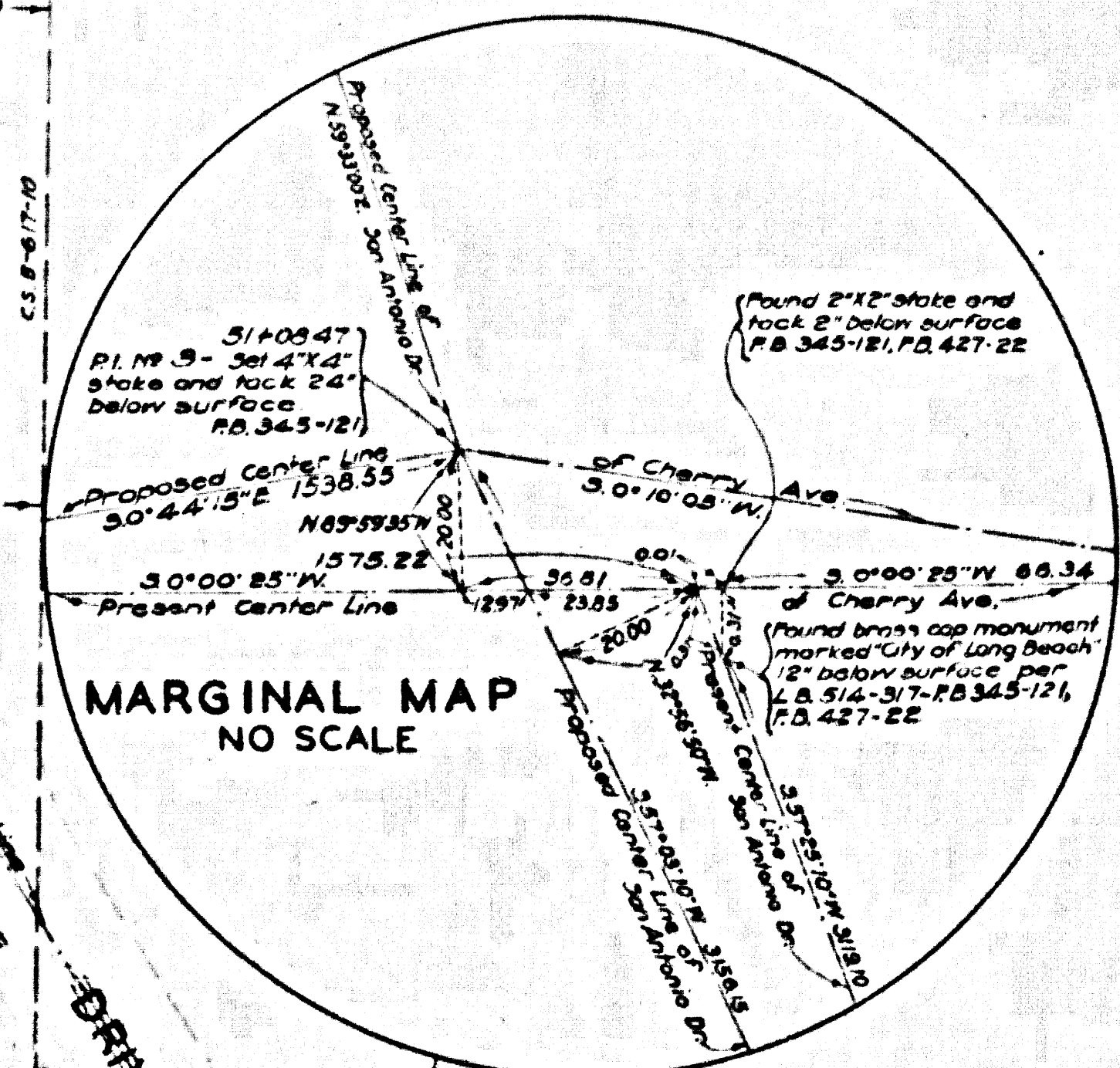
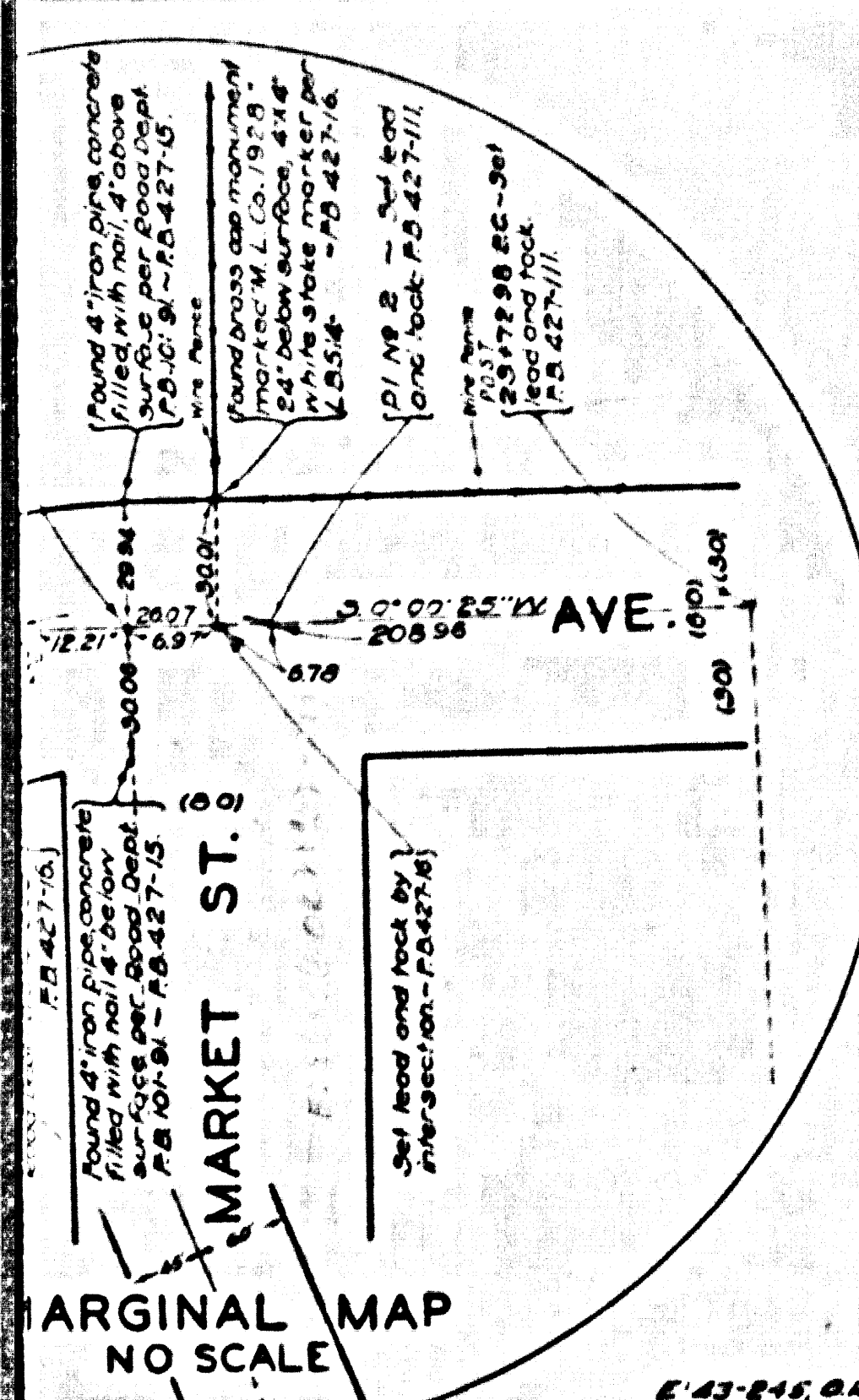
CHECKED BY H.M. HIGGINS

Revised May, 1931 - 1 & 2 Procs.  
 Sht. 30  
 Sht. 32  
 Revised June, 1934 - 1 & 2 Procs.  
 Bound Jan., 1935 - 24

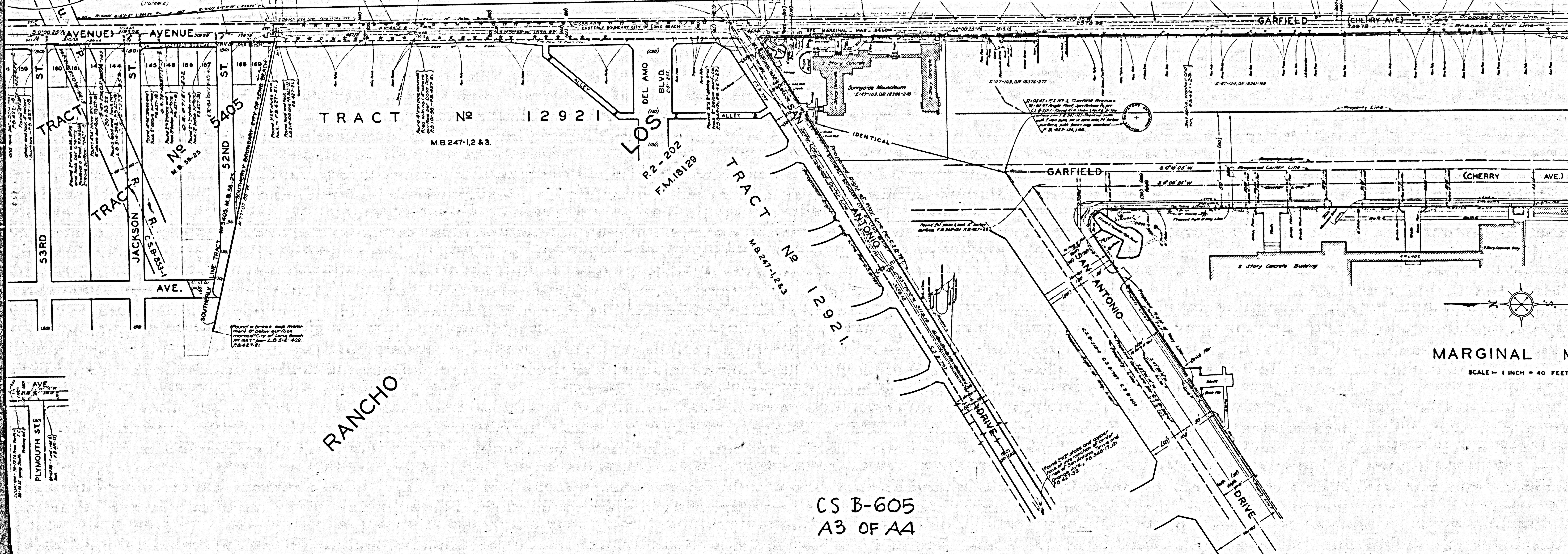
CSB-605  
 A1 OF A4



RAILROAD RIGHT-OF-WAY



CERRITOS

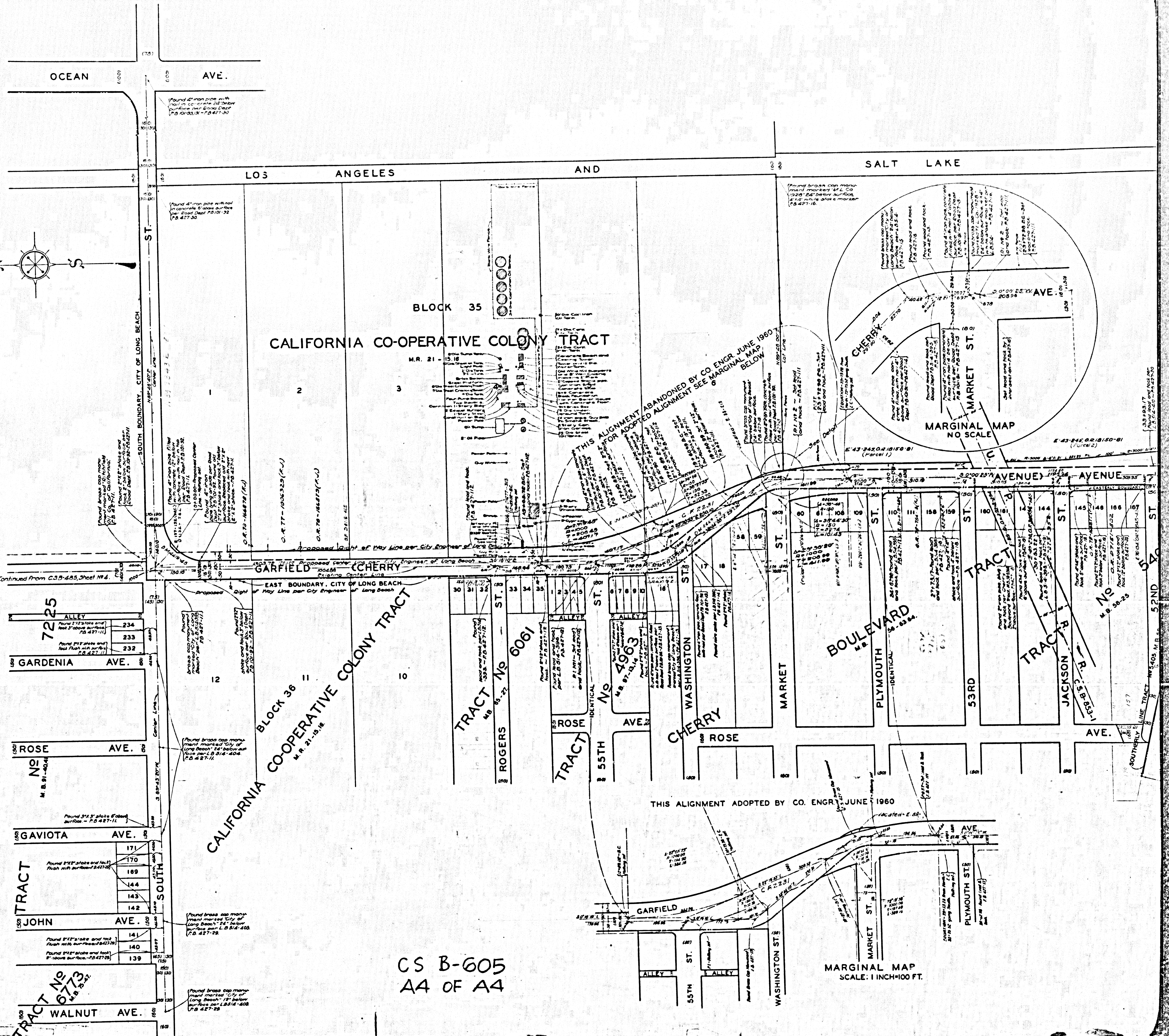
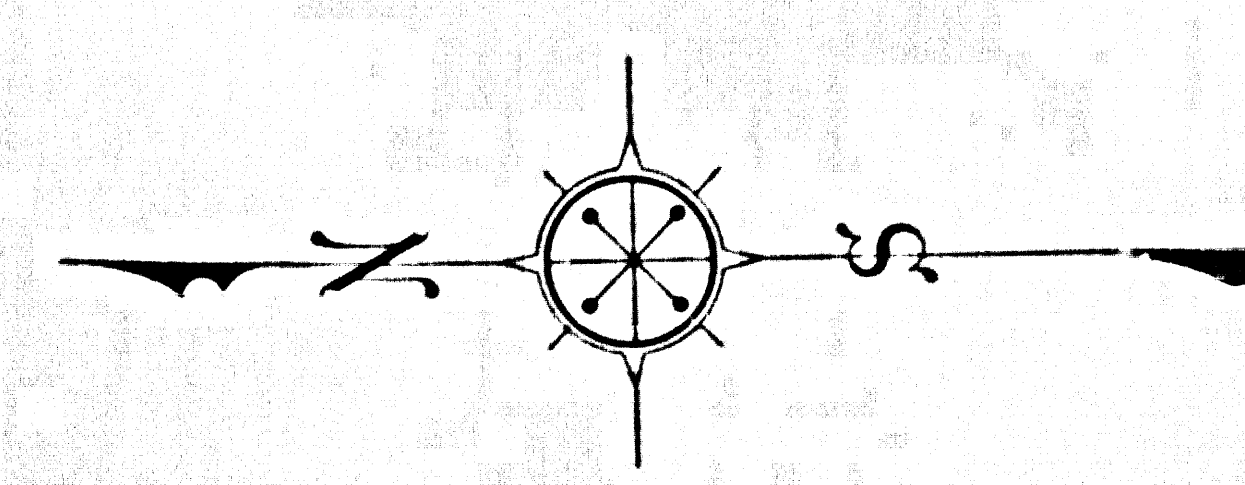


RANCHO

MARGINAL MAP  
SCALE - 1 INCH = 40 FEET.

CS B-605  
A3 OF A4





CALIFORNIA CO-OPERATIVE COLONY TRACT

BLOCK 35

CALIFORNIA CO-OPERATIVE COLONY TRACT  
Block 36  
M.R. 21-1516

CS B-605  
A4 OF A4

MARGINAL MAP  
SCALE: 1 INCH=100 FT.

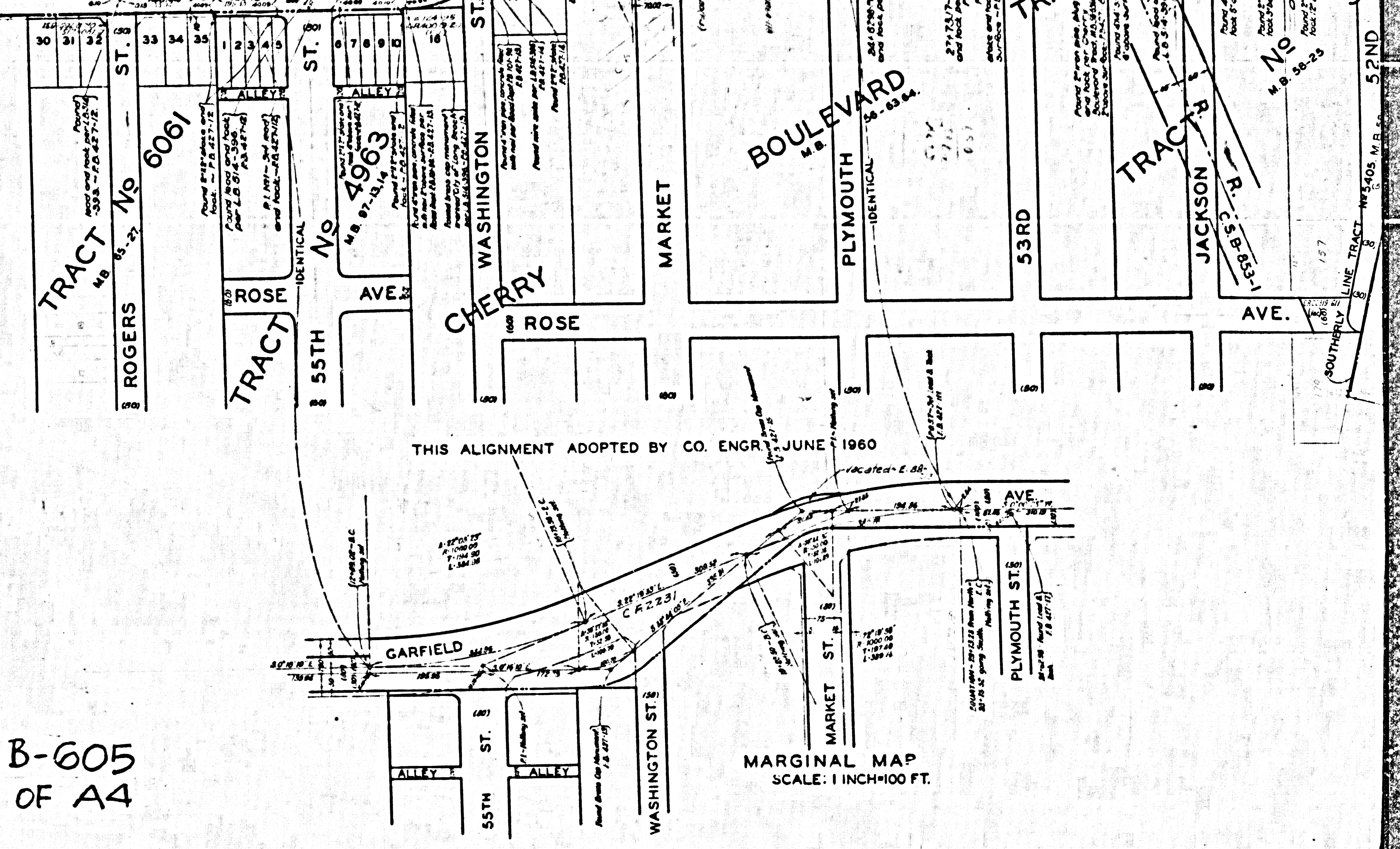
MARGINAL MAP  
NO SCALE

THIS ALIGNMENT ADOPTED BY CO. ENGR. JUNE 1960

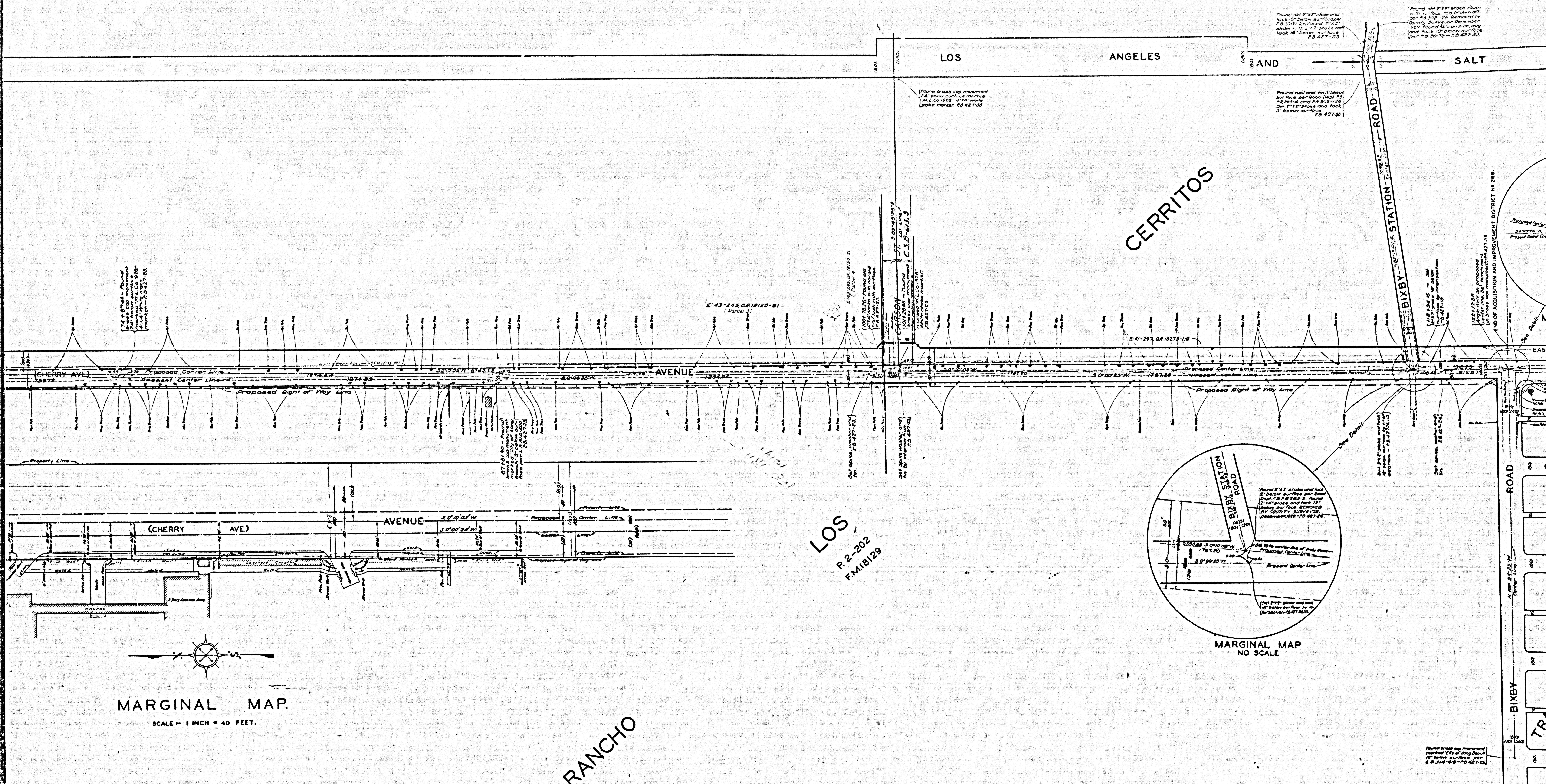
THIS ALIGNMENT ABANDONED BY CO ENGR. JUNE 1960  
FOR ADOPTED ALIGNMENT SEE MARGINAL MAP BELOW

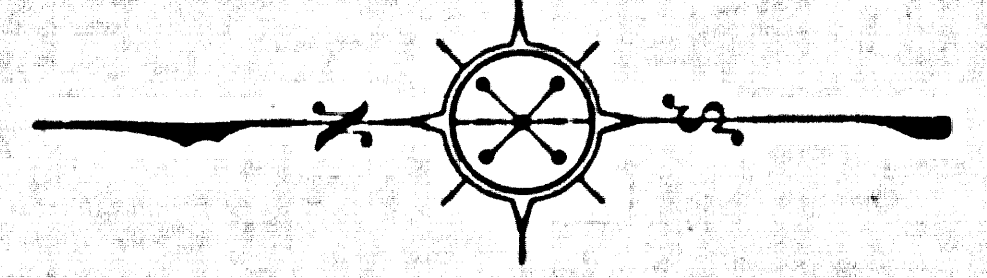
Continued From C.S.B-485, Sheet No 4.

7225 ALLEY	234
	233
	232
GARDENIA AVE.	
ROSE AVE. No. 91-404	
GAVIOTA AVE.	
	171
	170
	169
	144
	143
	142
JOHN AVE.	
	141
	140
	139
WALNUT AVE.	





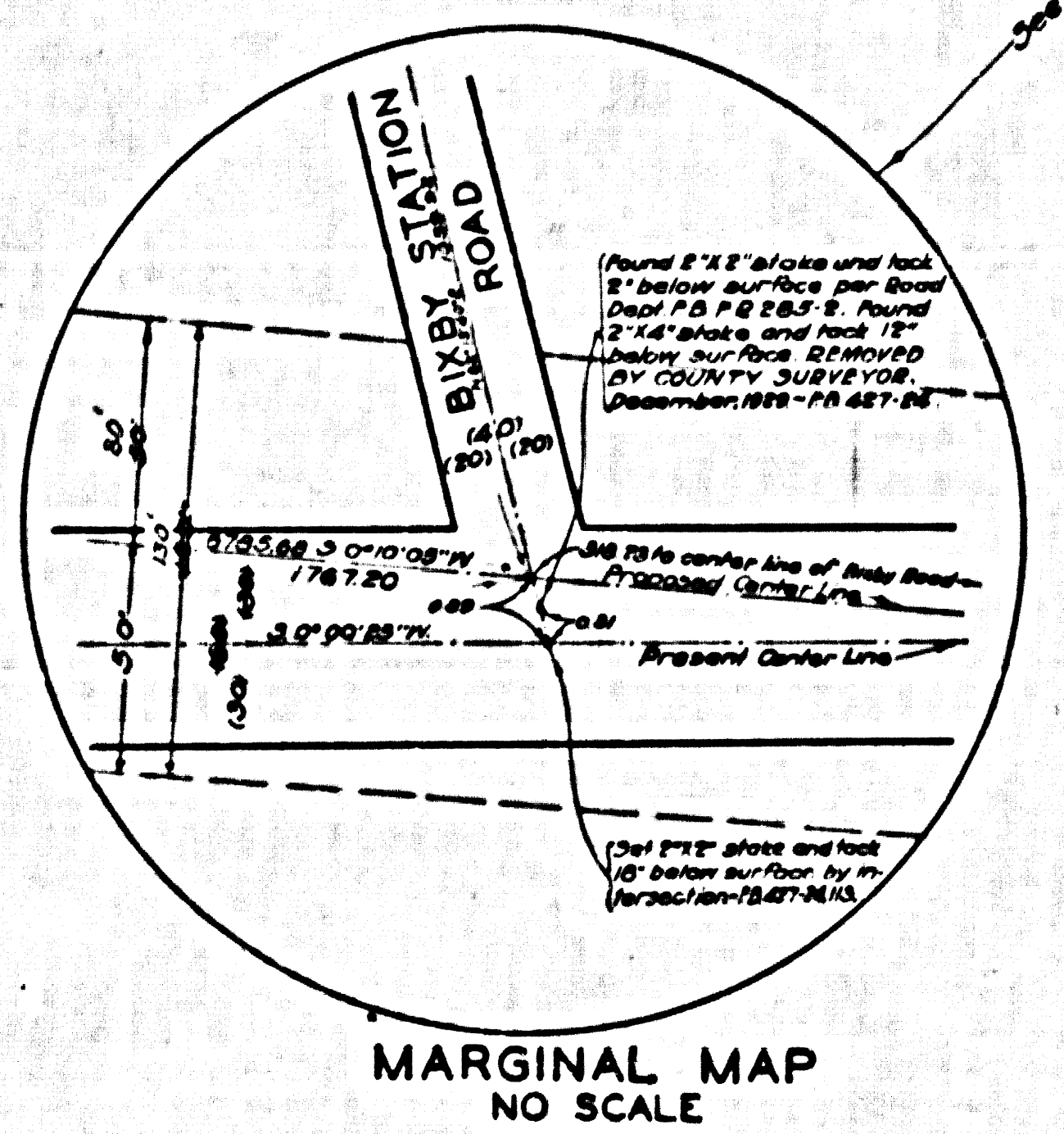


  
**MARGINAL MAP.**  
 SCALE = 1 INCH = 40 FEET.

RANCHO

LOS  
 P. 2-202  
 FM 18129

CSB-605  
 A2 OF A4



ROAD  
 BIXBY  
 TRACK  
 W