

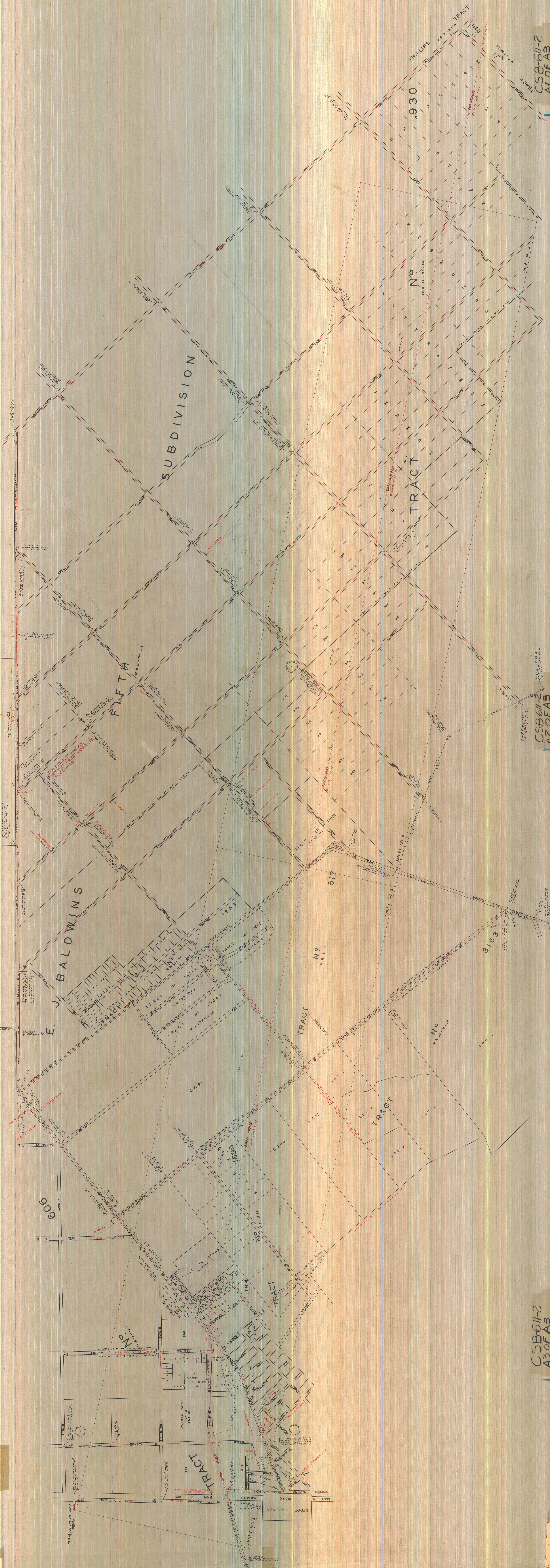
INDEX MAP OF
SAN JOSE DIAGON
 FROM
POMONA BOULEVARD
 TO
RONITA AVENUE

COUNTY SURVEYORS MAP NO. B-611
 SCALE - 1 INCH = 300 FT.

WORK ORDER NO. 827
 JEROME H. COUNTY SURVEYOR
 SURVEYED UNDER INSTRUCTIONS OF THE
 BOARD OF SUPERVISORS OF THE COUNTY OF
 SAN JOSE, CALIFORNIA, ON THE 15TH DAY OF
 DECEMBER, 1922.
 BEARINGS ARE BASED ON THE BEARING OF
 CORNER C. B. 11-1-200.

FIELD WORK BY... L. MOORE
 M. WHITE
 A. W. WILSON
 S. S. BUTLER
 OFFICE WORK BY... F. WOOD
 W. H. LAWLER
 CHECKED BY... W. H. LAWLER

THIS MAP SHOWS THE SUBDIVISION OF THE LAND DESCRIBED IN THE FOREGOING MAP NO. B-611 INTO LOTS AND TRACTS. THE LOTS AND TRACTS ARE SHOWN BY RED LINES AND ARE TO BE CONSIDERED AS THE BASIS FOR THE RECORDING OF DEEDS AND MORTGAGES. THE LOTS AND TRACTS ARE TO BE CONSIDERED AS THE BASIS FOR THE RECORDING OF DEEDS AND MORTGAGES. THE LOTS AND TRACTS ARE TO BE CONSIDERED AS THE BASIS FOR THE RECORDING OF DEEDS AND MORTGAGES.



CSB-611-2
 A1 OF A3

CSB-611-2
 A2 OF A3

CSB-611-2
 A3 OF A3