

DEL AMO BOULEVARD
MAP OF
LOS ANGELES STREET

FROM
DIAMOND STREET
TO
SAN GABRIEL RIVER

COUNTY SURVEYORS MAP NO. B-617
SHEET 2 OF 11 SHEETS
SCALE - 1 INCH = 100 FT

WORK ORDER NO. 661
J. ROCKHOLD - COUNTY SURVEYOR
SURVEYED 1931
SURVEYED UNDER INSTRUCTIONS OF THE
BOARD OF SUPERVISORS PER ORDER DATED
SEPTEMBER 16 - 1929
BEARINGS ARE BASED ON THE BEARING OF
VERMONT AVENUE PER C.S.B.-31

F. B. 441-34-85, 178-192

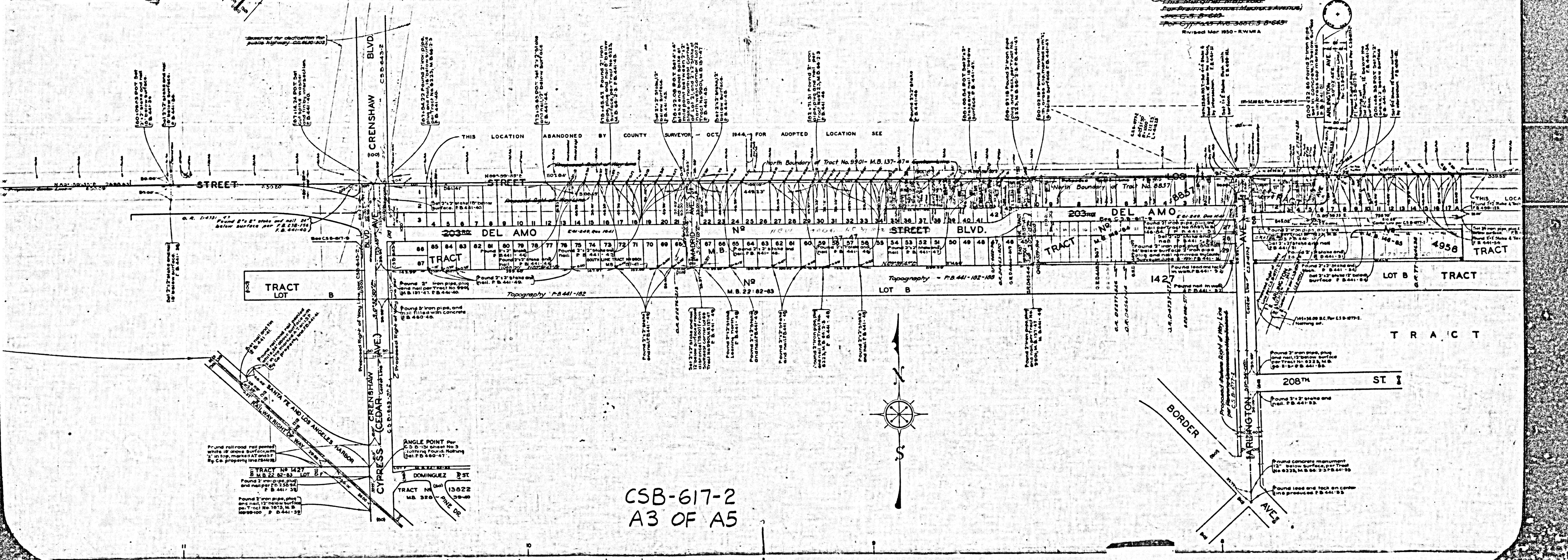
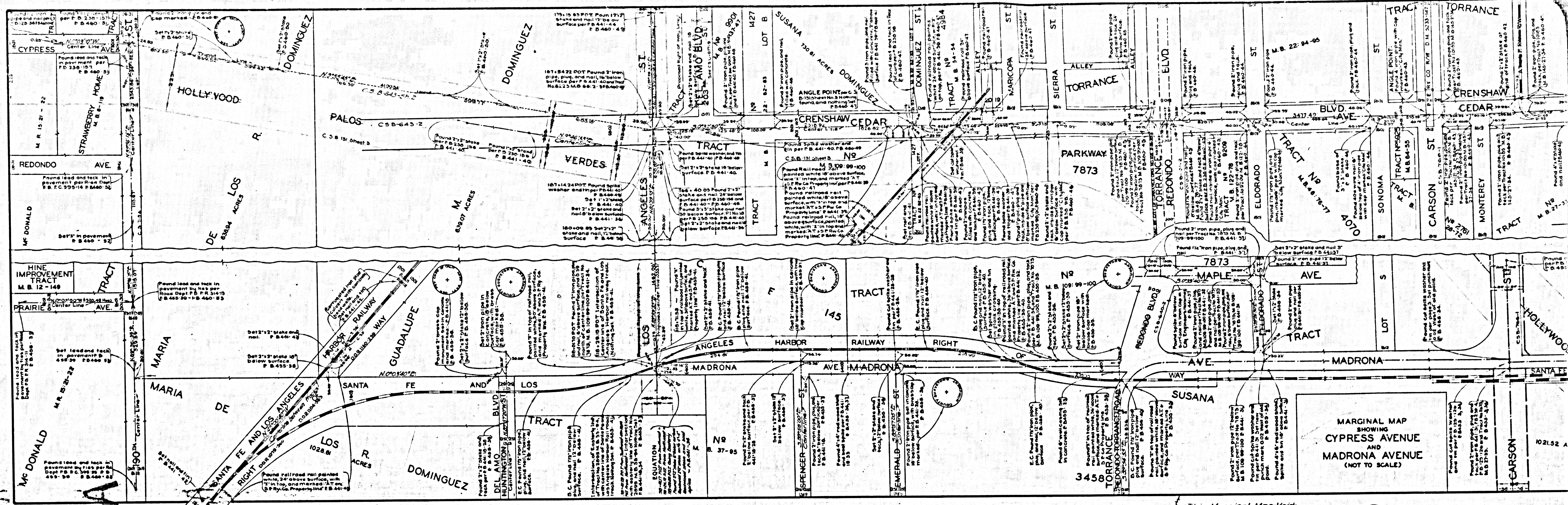
FIELD WORK BY / S. E. BUTLER
OFFICE WORK BY / J. C. HOYT
CHECKED BY / H. REYNOLDS

FOR INDEX MAP SEE C.S.B.-617-9

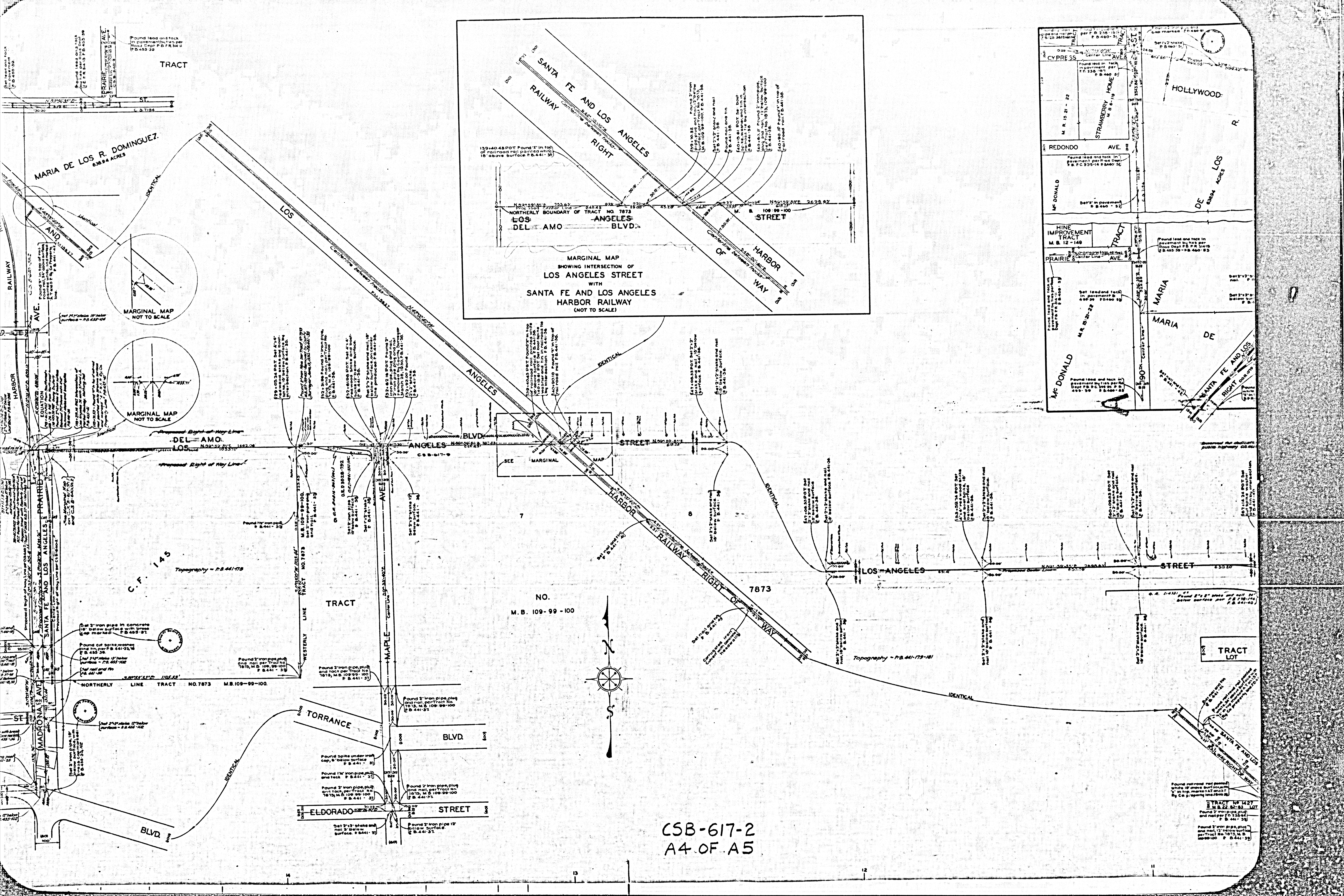
Revised Oct. 1944 - J.D. Price.
Revised Mar. 1950 - R.W. Stewart.
Alignment of Normandie Ave revised Apr. 1955 - T.M.L.

CSB-617-2
A1 OF A5

FOR BLUE PRINTING
WIDTH OF MAP = 37 INCHES
AREA / FOOT LENGTH = 33.7
TOTAL AREA OF MAP = 83.7

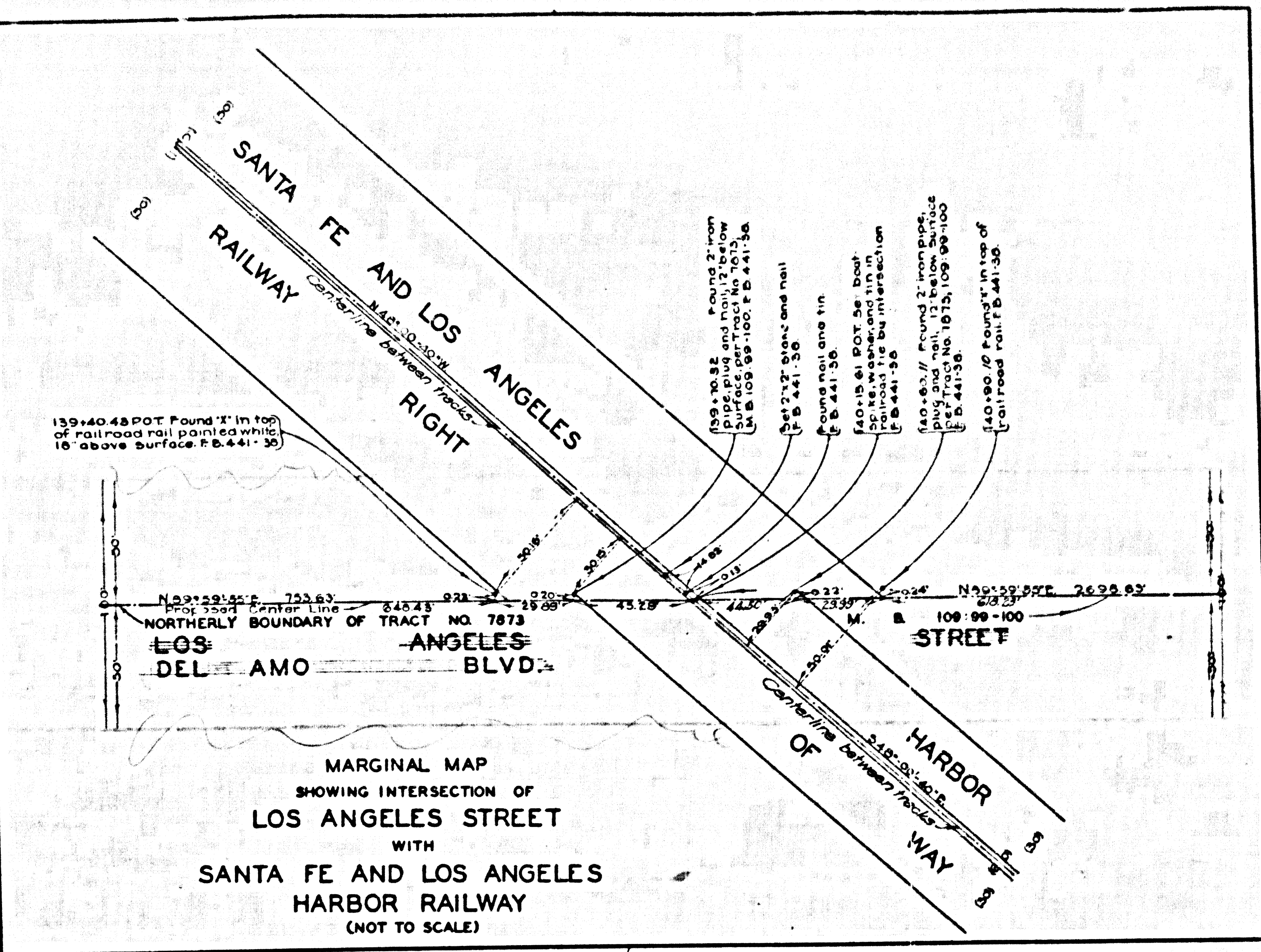


CSB-617-2
A3 OF A5

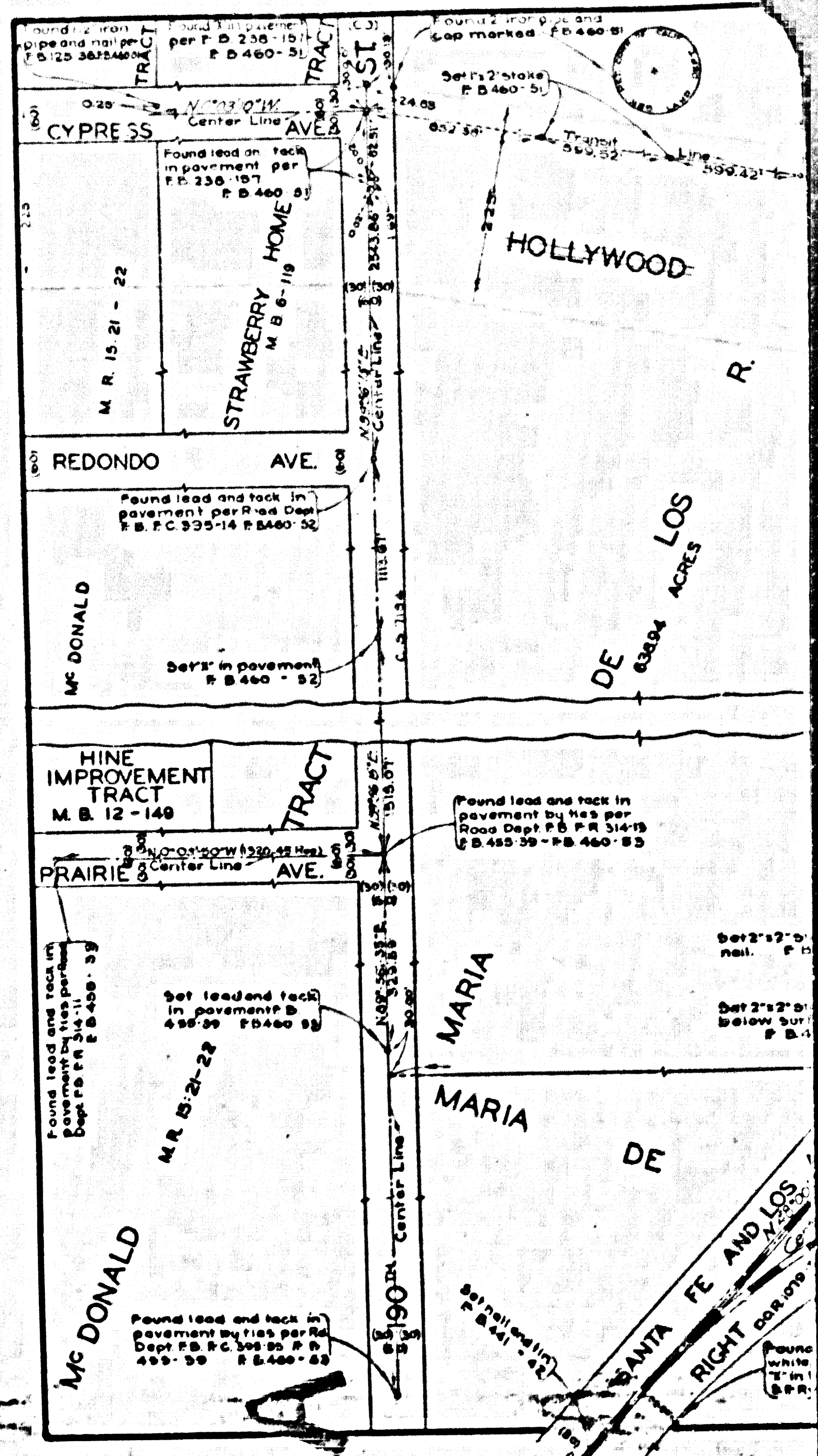


TRACT

MARIA DE LOS R. DOMINGUEZ
636.94 ACRES



MARGINAL MAP
SHOWING INTERSECTION OF
LOS ANGELES STREET
WITH
SANTA FE AND LOS ANGELES
HARBOR RAILWAY
(NOT TO SCALE)



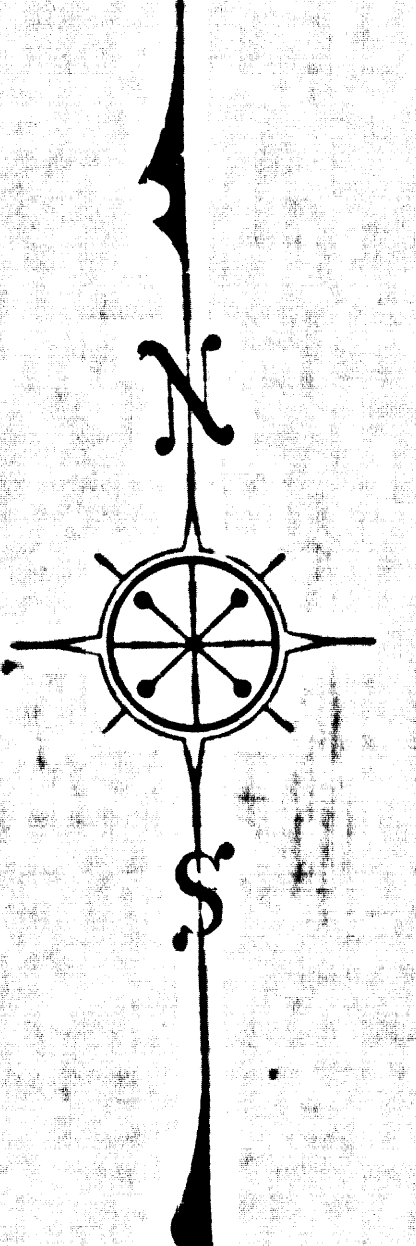
MARGINAL MAP
NOT TO SCALE

MARGINAL MAP
NOT TO SCALE

Proposed Right-of-Way Line
DEL AMO
LOS ANGELES

Proposed Right-of-Way Line
LOS ANGELES

NO.
M.B. 109-99-100



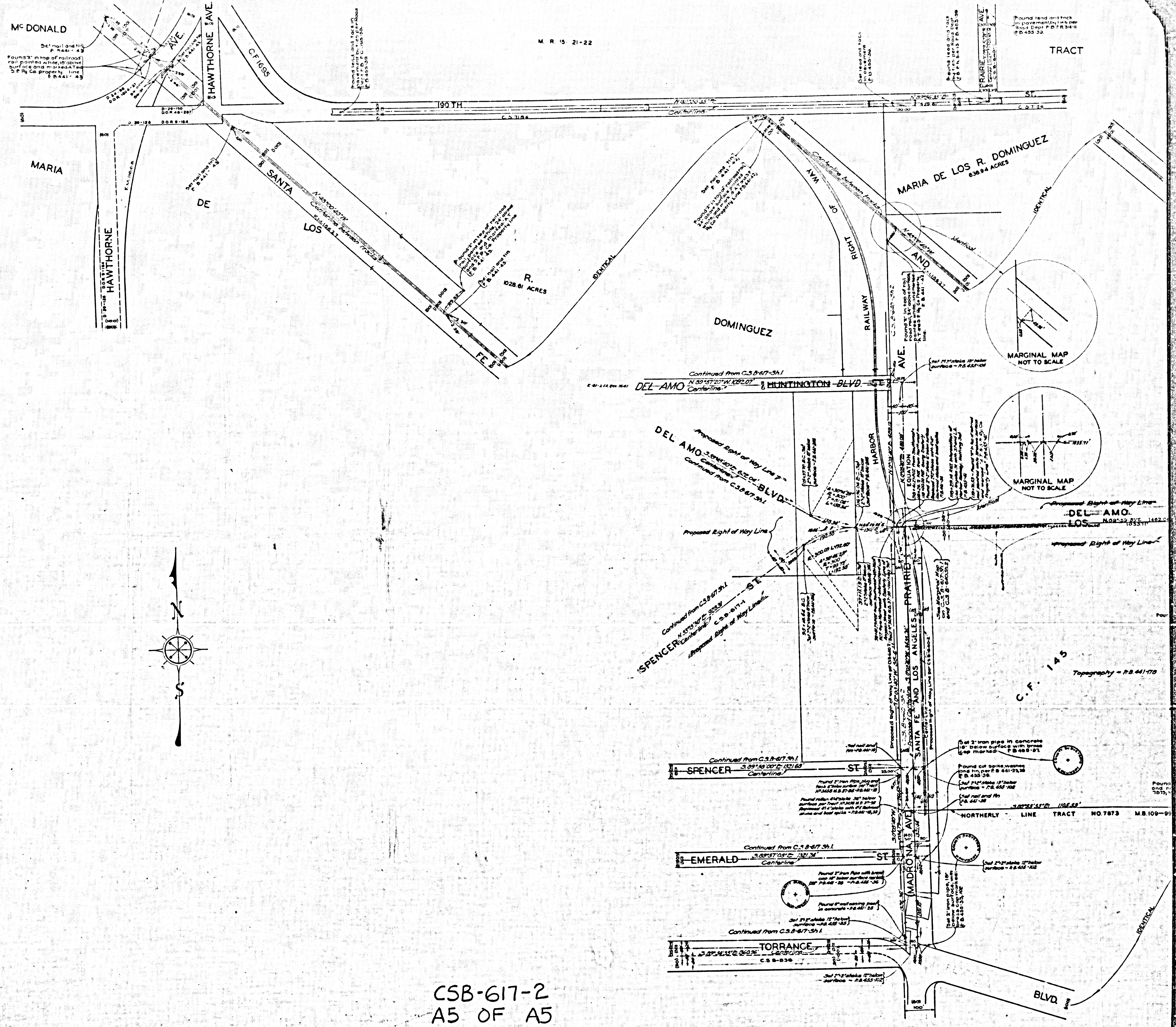
CSB-617-2
A4 OF A5

TRACT
LOT

TRACT NO 1427
M.B. 22-82-83
Found 2" iron pipe, plus
and nail per Tract No.
1427, M.B. 22-82-83
per Tract No. 1427, M.B.
22-82-83, opening line 1427

SHEET NO. 11 OF 12 SHEETS
COUNTY SURVEYORS MAP NO. B-611

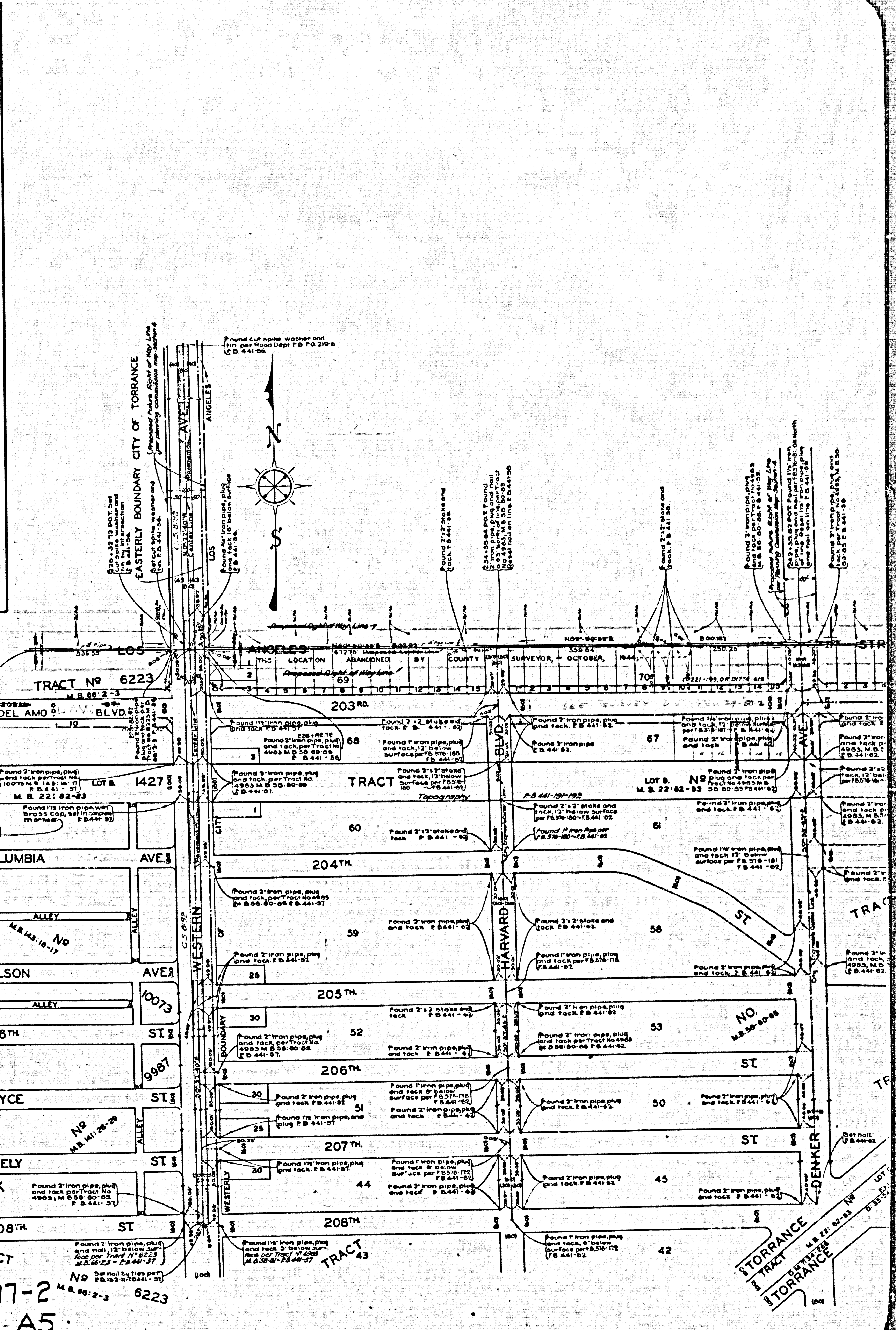
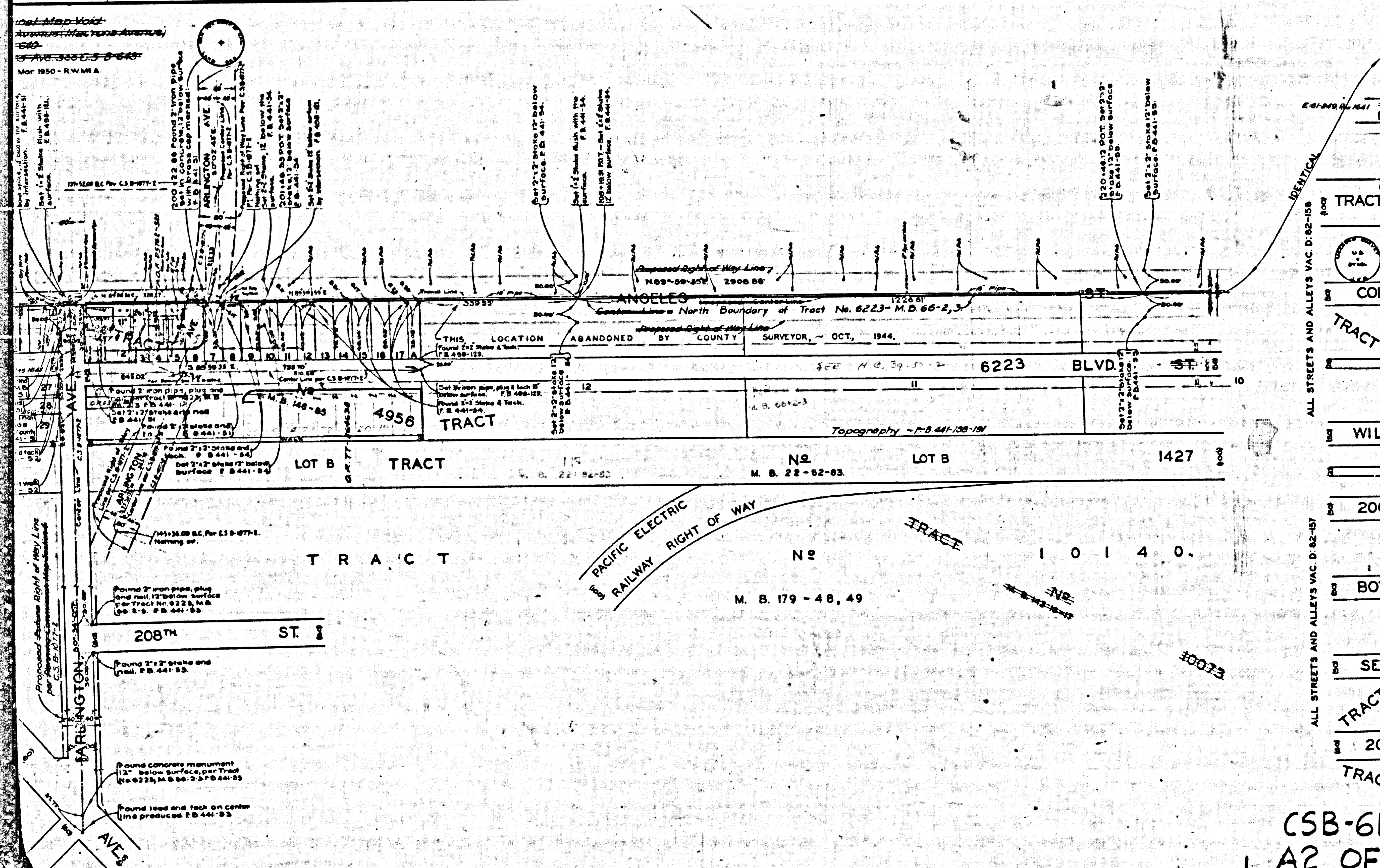
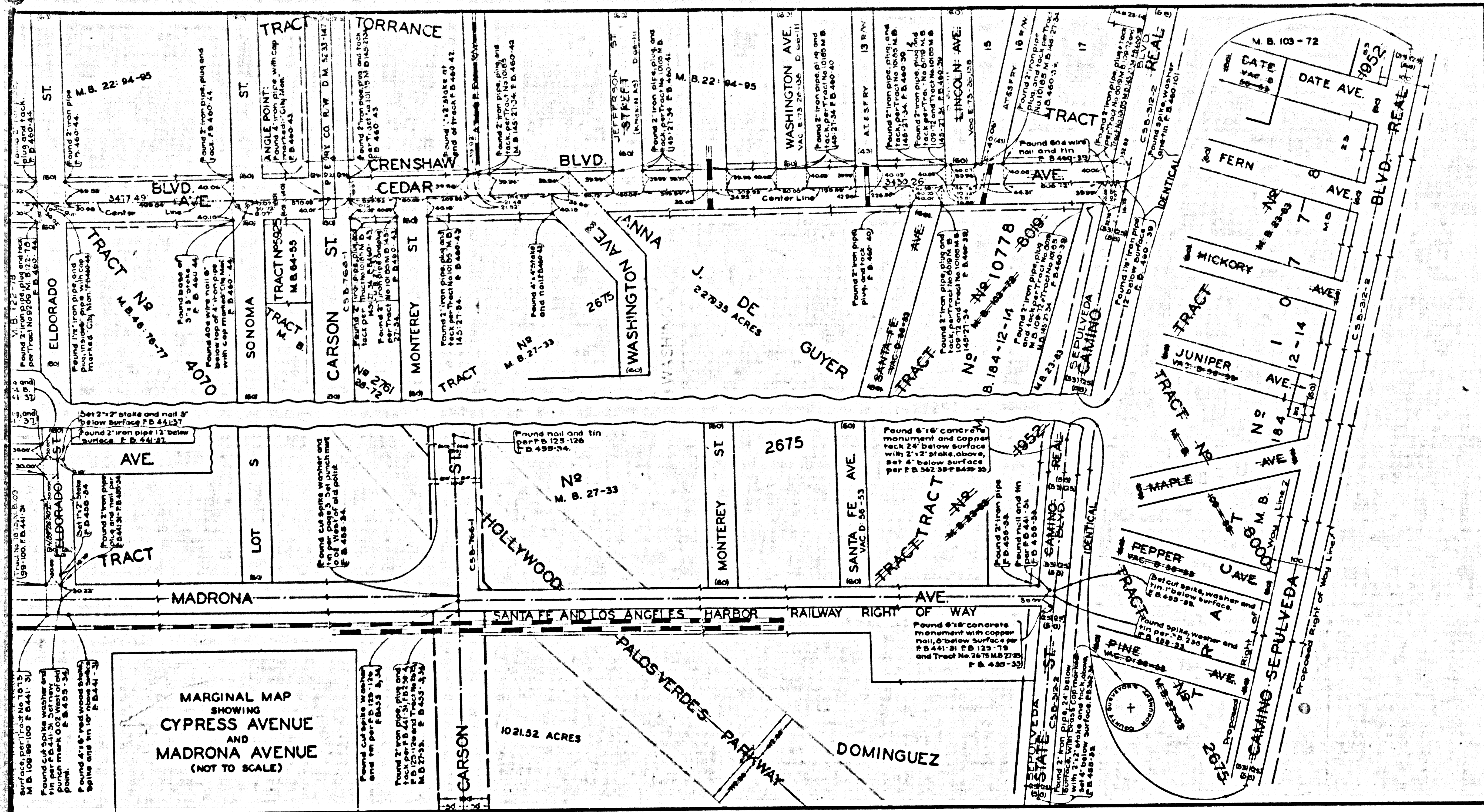
SHEET NO. 5 OF 11 SHEETS
COUNTY SURVEYORS MAP NO. B-611



M. R. 15 21-22

TRACT

CSB-617-2
A5 OF A5



CSB-617-2
A2 OF A5