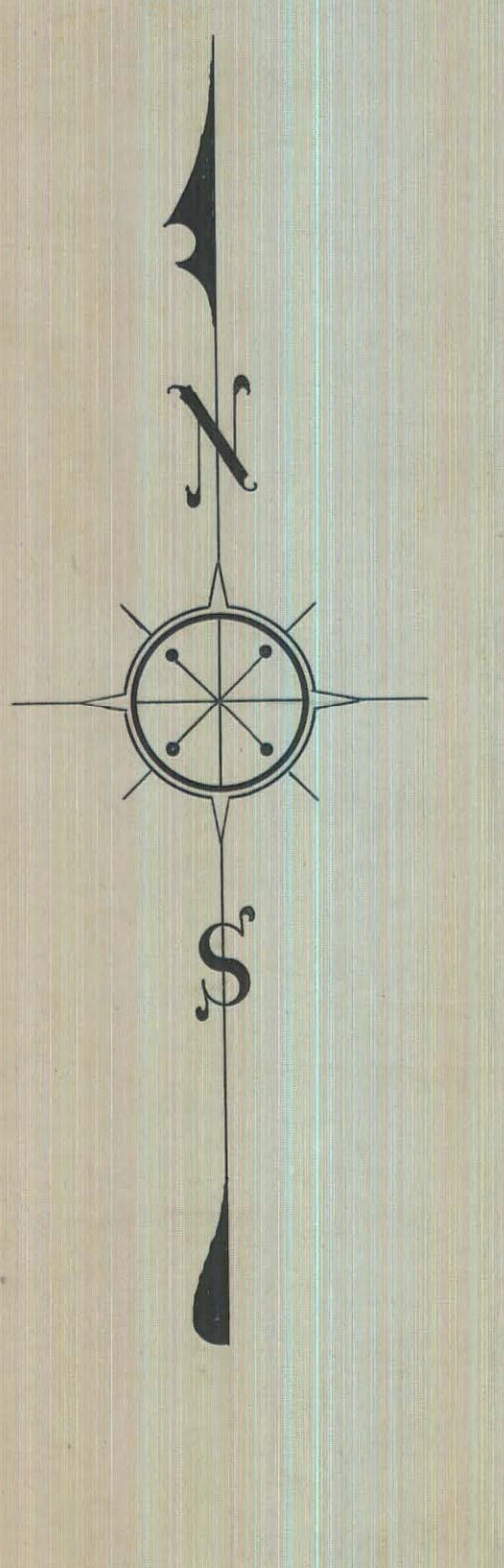
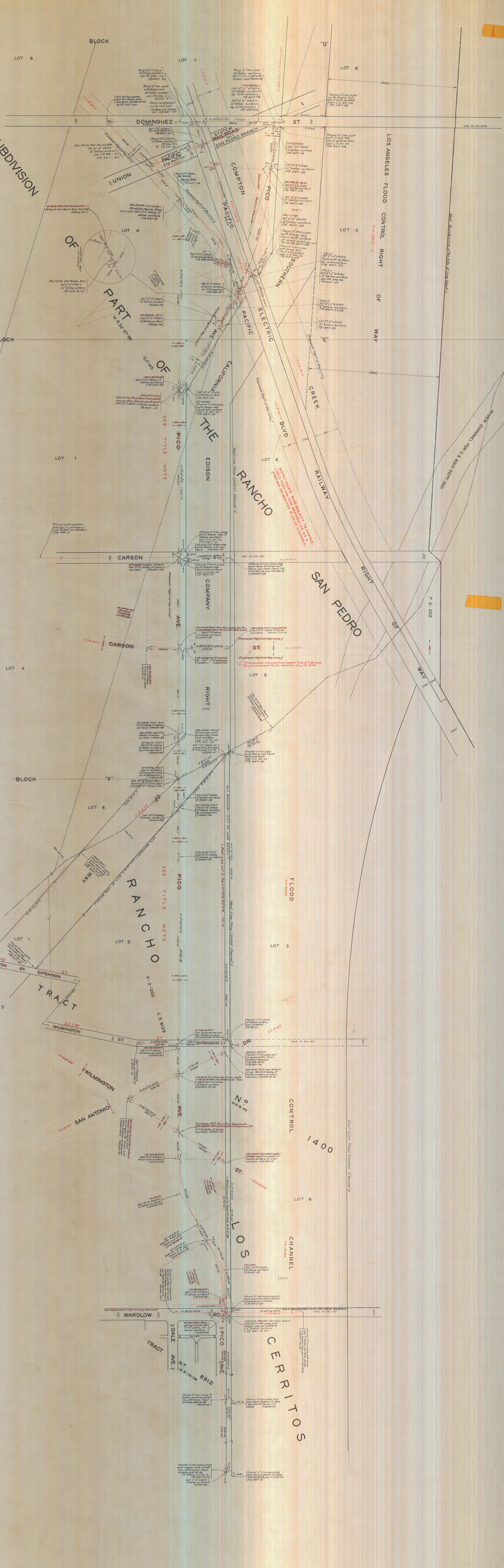


CSB-626-1
A3 OF A3

CSB-626-1
A2 OF A3

CSB-626-1
A1 OF A3



MAP OF
PICO AVE.
FROM ROAD
WARDLOW
TO
PACIFIC BOULEVARD
COUNTY SURVEYOR'S MAP NO. B-326
SHEET NO. 1 OF 2 SHEETS
WORK ORDER NO. 90
J. E. ROCKHOLD - COUNTY SURVEYOR
SURVEYED UNDER INSTRUCTIONS OF THE
BOARD OF SUPERVISORS, COUNTY OF
LOS ANGELES, JANUARY, 1931
FIELD WORK BY E. A. ROBERTS
OFFICE WORK BY FRED HOLLOWAY
CHECKED BY H. L. HARRIS
1931

THE LOCATION OF PICO AVE. AS SHOWN
ON THIS MAP IS BANNED BY COUNTY
SURVEYOR JAN. 1931. HIGHWAY ROUTE 77A
RAN FROM THE (SEE PLAN 1197-2 TO 5)

REPRODUCED FROM THE ORIGINAL
COUNTY ARCHIVES