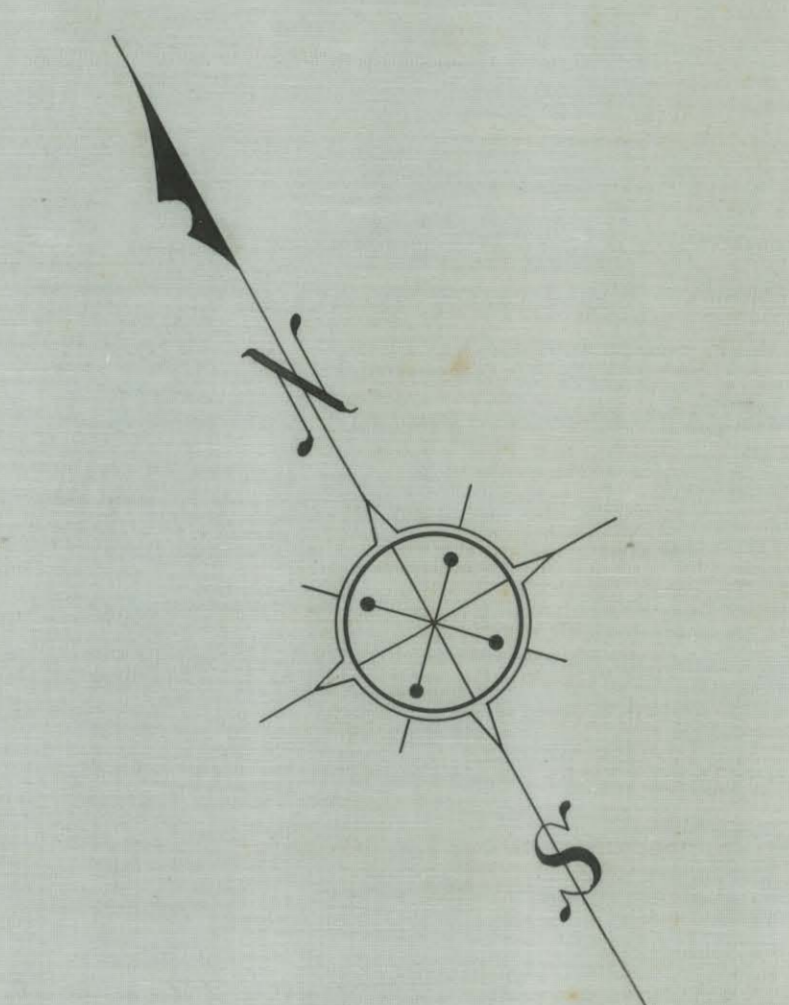
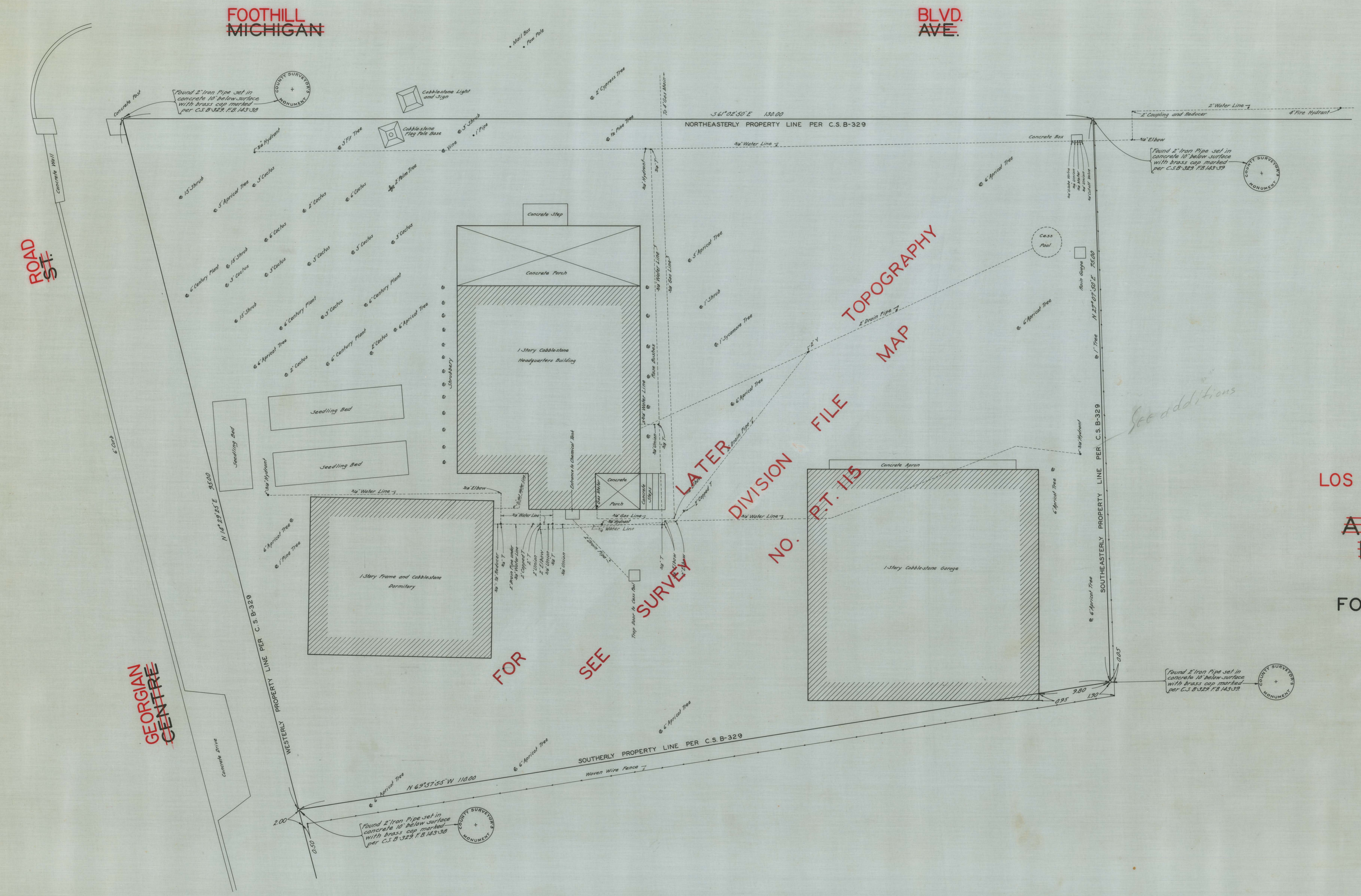


COUNTY SURVEYORS MAP No. 63

COUNTY SURVEYORS MAP No. 63



TOPOGRAPHIC MAP OF  
 LOS ANGELES COUNTY FIRE STATION SITE No 82  
 MAP SHOWING  
 LOCATION OF TOPOGRAPHY  
~~ARROYO SECO DIVISION~~  
~~HEADQUARTERS LOT~~  
 OF  
 LOS ANGELES COUNTY  
 FORESTRY AND FIRE DEPARTMENT  
 FOOTHILL BLVD. AT GEORGIAN ROAD  
 MICHIGAN AVENUE AND CENTRE STREET  
 COUNTY SURVEYORS MAP No B-631  
 SCALE - 1 INCH = 5 FEET.

WORK ORDER No 7010  
 J. ROCKHOLD - COUNTY SURVEYOR  
 SURVEYED JANUARY 1931  
 BEARINGS ARE BASED ON THE BEARING OF  
 MICHIGAN AVENUE AS SHOWN ON C.S.B-329  
 F.B. 143-37-40  
 FIELD WORK BY C.V. CRUMLEY  
 OFFICE WORK BY G.A. CROWL  
 CHECKED BY D.M. FINLEY

NOTE: FOR MAP SHOWING SURVEY OF PROPERTY  
 LINES SEE C.S.B-329.  
 GEORGIAN RD. D-49-297  
 Centre Pt changed to ~~Map No. B-631~~ Min. Bk. 122-115

LATER TOPOGRAPHY  
 DIVISION FILE  
 NO. P.T. 115

FOR SEE SURVEY

See additions

CSB-631  
 A1 OF A1