

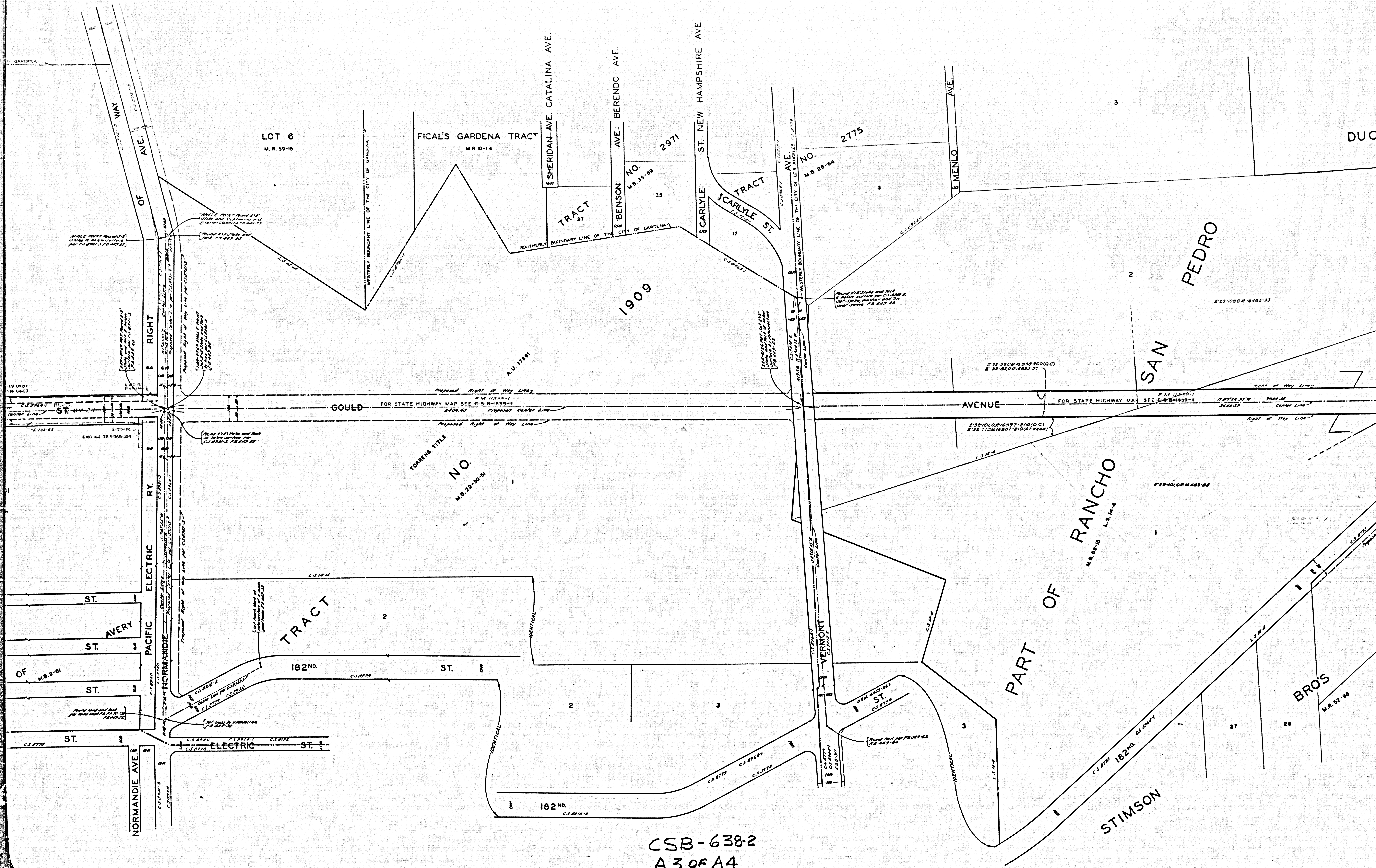
MAP OF
GOULD AVENUE
 FROM
ALAMEDA STREET
 TO
WESTERN AVENUE
 COUNTY SURVEYORS MAP NO B-638
 SHEET NO 2 OF 2 SHEETS
 SCALE - 1 INCH = 100 FT.
 WORK ORDER NO 7003

J. ROCKHOLD - COUNTY SURVEYOR
 SURVEYED NOV. 1930 - MAY 1931
 SURVEYED UNDER INSTRUCTIONS OF THE
 BOARD OF SUPERVISORS PER ORDER DATED
 OCTOBER 27, 1930
 BEARINGS ARE BASED ON THE BEARING OF
 COMPTON CREEK PER C.S. B-181-2
 F.B. 449-9-44 F.B. 356-9-18
 FIELD WORK BY F. J. McNEAL
 OFFICE WORK BY BERT McATEE
 G. A. CROWL
 CHECKED BY D. M. FINLEY

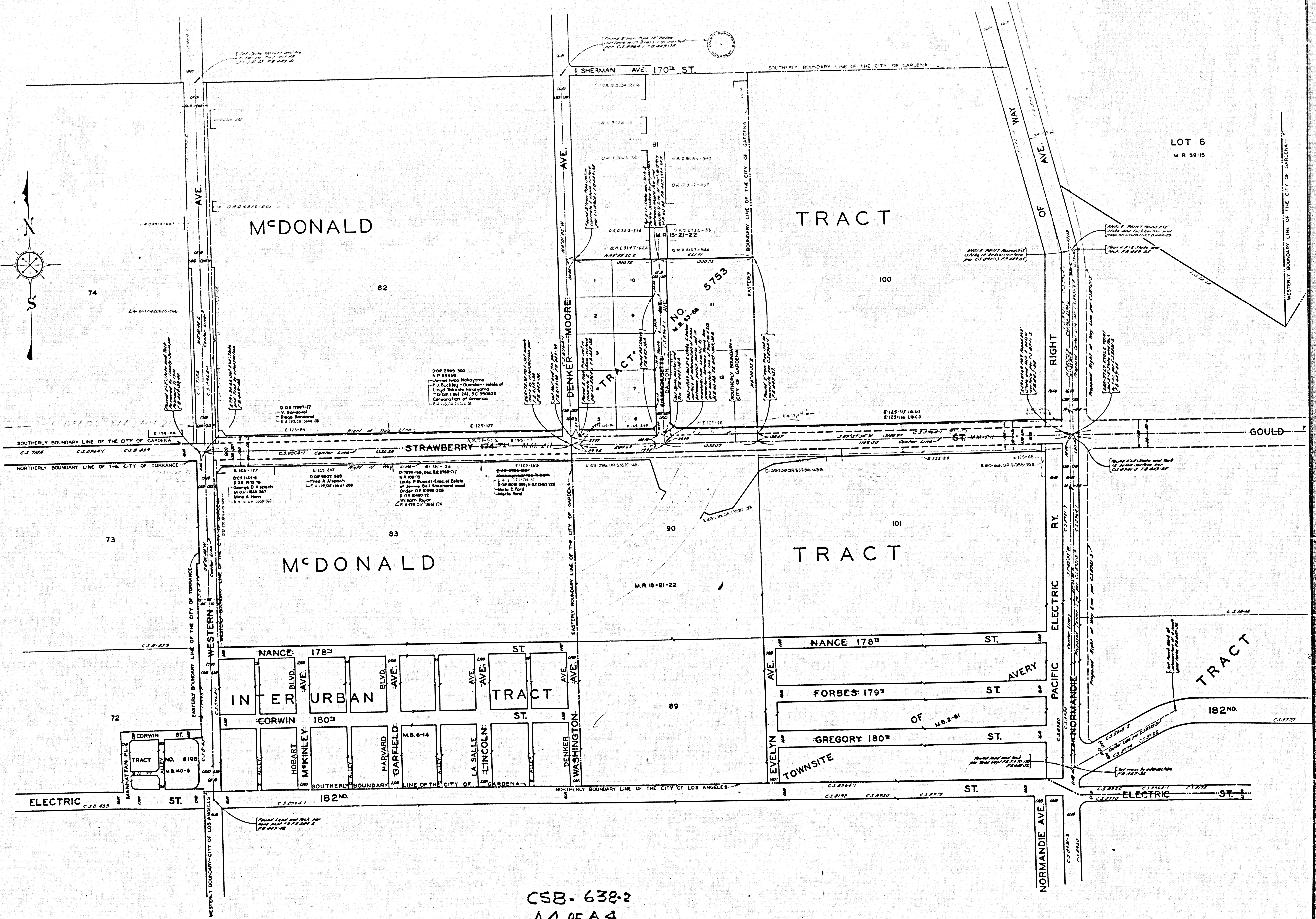
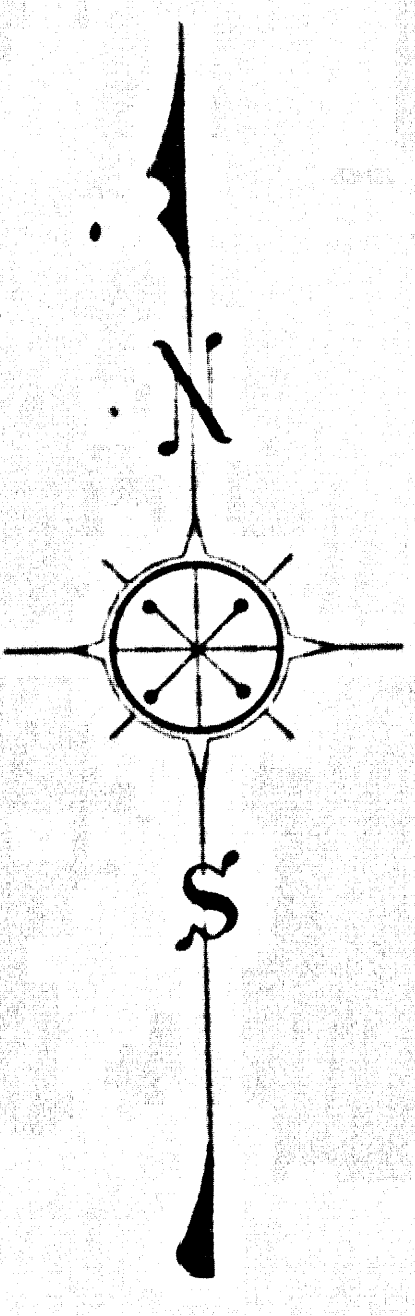
Sht 26

Strawberry St changed to 175th St - D 88 175, Rev. 17, Sec. 44
 175th St - 174th St - D 88 171, 20

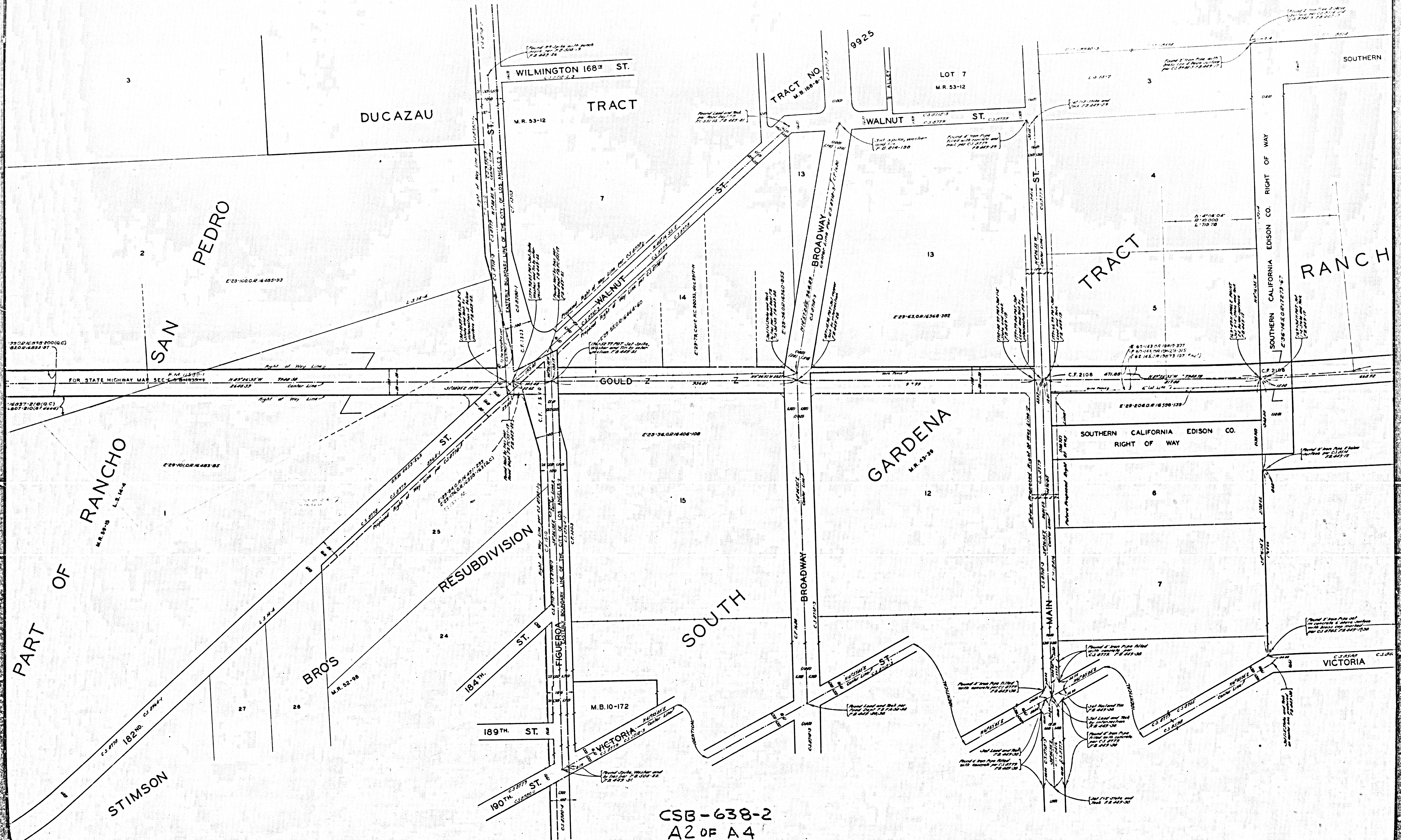
CSB-638-2
 A1 of A4



CSB-638-2
A 3 OF A4



CSB-638-2
A4 OF A4



CSB-638-2
A2 OF A4