

QUARRY '80' PLANTATION
TOPOGRAPHIC MAP OF
SAN DIMAS FOOTHILL PARK
IN
SECTION 35 T1N R9W SBM

COUNTY SURVEYORS MAP NO. B864
 SCALE - 1 INCH = 50 FT.
 WORK ORDER NO. 7030
 J.E. ROCKHOLD - COUNTY SURVEYOR
 SURVEYED MAY-JUNE 1931
 P.T. SHEETS NOS. G-80, G-81, G-82, G-120
 TOPOGRAPHY BY F. GREENWOOD
 OFFICE WORK BY P. W. ATKINS
 CHECKED BY W. J. LUCAS

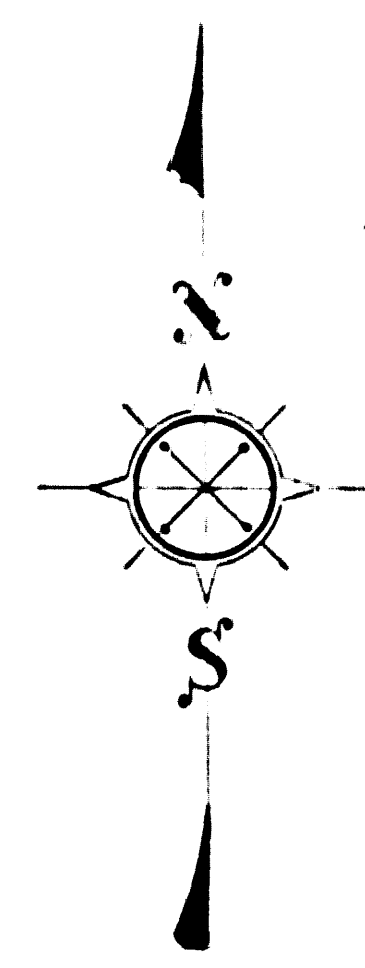
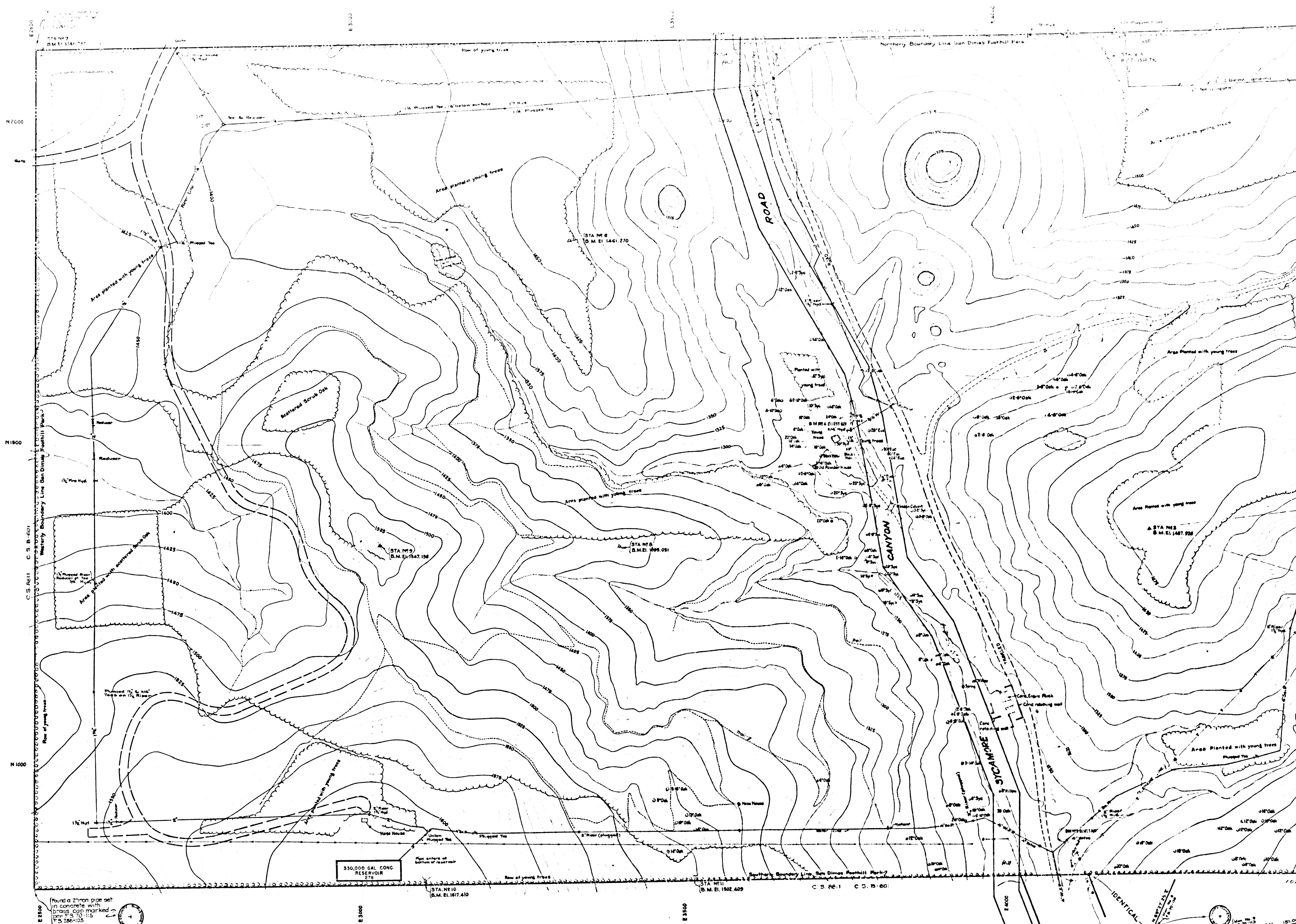
U.S.G.S. - DATUM
 BENCH MARK ELEVATIONS SHOWN
 HEREON ESTABLISHED FROM U.S.G.S.
 B.M. NO. 522 PER U.S.G.S. RECORDS
 OF ELEVATIONS BASED UPON SOUTH-
 ERN CALIFORNIA PRELIMINARY
 ADJUSTMENT OF 1928

WATER LINES & IMPROVEMENTS REVI. 70
 2195 - NO. 8741 - 11-22-77 - 11-22-77
 FURNISHED BY CALIFORNIA FORESTERS &
 FIRE WARDEN PROTECTIVE DISTRICT
 DIVISION FILE NO. 14-168
 11-22-77

CONTOURS NOT REVI'D

FOR BOUNDARY SEE C.S.B-1443
 FOR TOPOGRAPHY IN THE EASTERLY PORTION SEE C.S.B-2458

CSB-664
 A1 OF A2



Found a 2" iron pipe set in concrete with brass cap marked (see page 10) on 5/25/55

330,000 GAL CONC. RESERVOIR

CSB-664
A2 DFAZ

