

COUNTY OF LOS ANGELES
 MAP OF
LOMITA BOULEVARD
 FROM
 ALAMEDA STREET
 TO
 CRENSHAW BOULEVARD
 COUNTY SURVEYORS MAP NO. B-680
 SHEET NO. 2 OF 4 SHEETS
 SCALE: 1 INCH = 100 FT.

JOB NUMBER 0074.57
 JOHN A. LAMBIE - COUNTY ENGINEER
 SURVEYED DECEMBER 1964
 SURVEYED ON REQUEST OF THE REGIONAL
 PLANNING COMMISSION UNDER SEC. 79, ORD.
 4099 BY LETTER DATED MAY 28, 1962 AND AS
 AUTHORIZED BY THE BOARD OF SUPERVISORS
 IN THEIR ORDER OF JUNE 1, 1958.
 BEARINGS ARE BASED ON THE CALIFORNIA
 COORDINATE SYSTEM ZONE 7 PER SEC. 8809
 PUBLIC RESOURCES CODE. SEE C.S. 9423.
 F.B. 965 F.B. 1527 F.B. 2703
 F.B. 2723 F.B. 2737
 FIELD WORK BY..... C. K. LIND
 D. L. BURKHOLDER
 OFFICE WORK BY..... M. HAMASU
 CHECKED BY..... S. SHINODA

CSB - 680-2
 A1 OF A3

SHEET NO. 2 OF 4 SHEETS

COUNTY SURVEYORS MAP NO. B-680

GERMAN SETTLEMENT

M. B. 11 - 121

DETAIL MAP NO SCALE

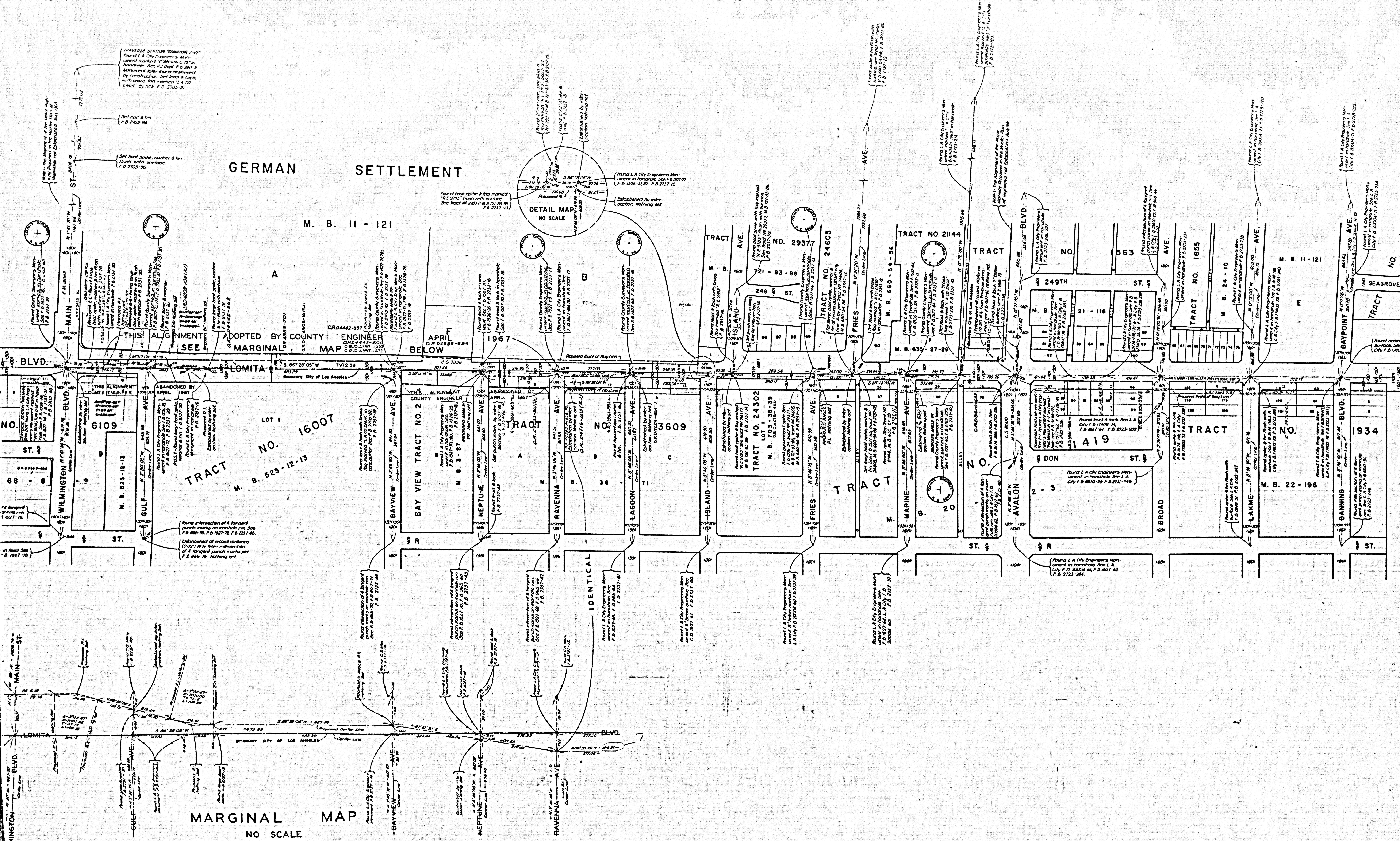
TRACT NO. 16007
M. B. 525-12-13

TRACT NO. 3609
M. B. 3-87

TRACT NO. 24302
M. B. 703-38-39

TRACT NO. 1934
M. B. 22-196

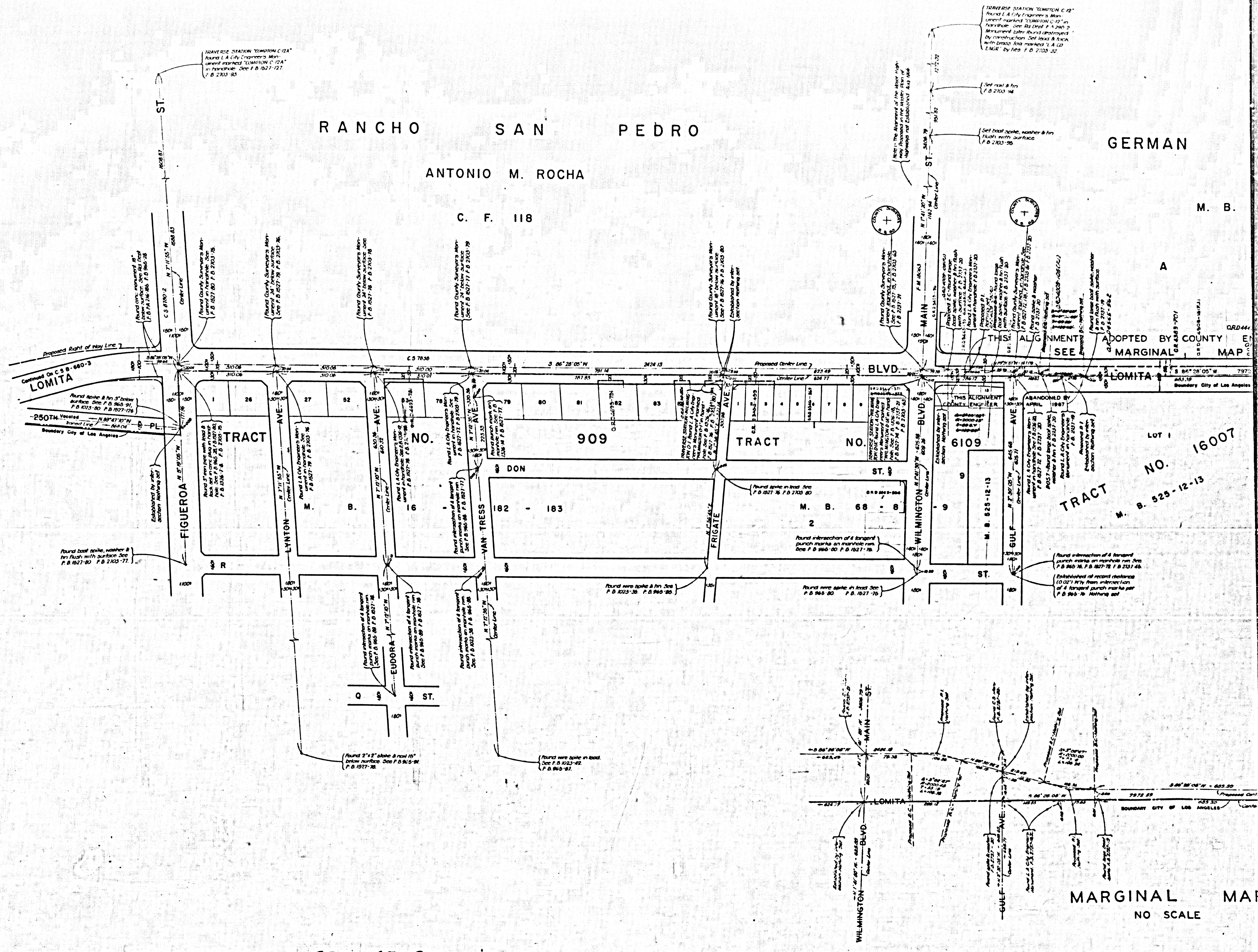
MARGINAL MAP NO SCALE



RANCHO SAN PEDRO

ANTONIO M. ROCHA

C. F. 118



CSB-680-2
A3 OF A3

MARGINAL MAP
NO SCALE