

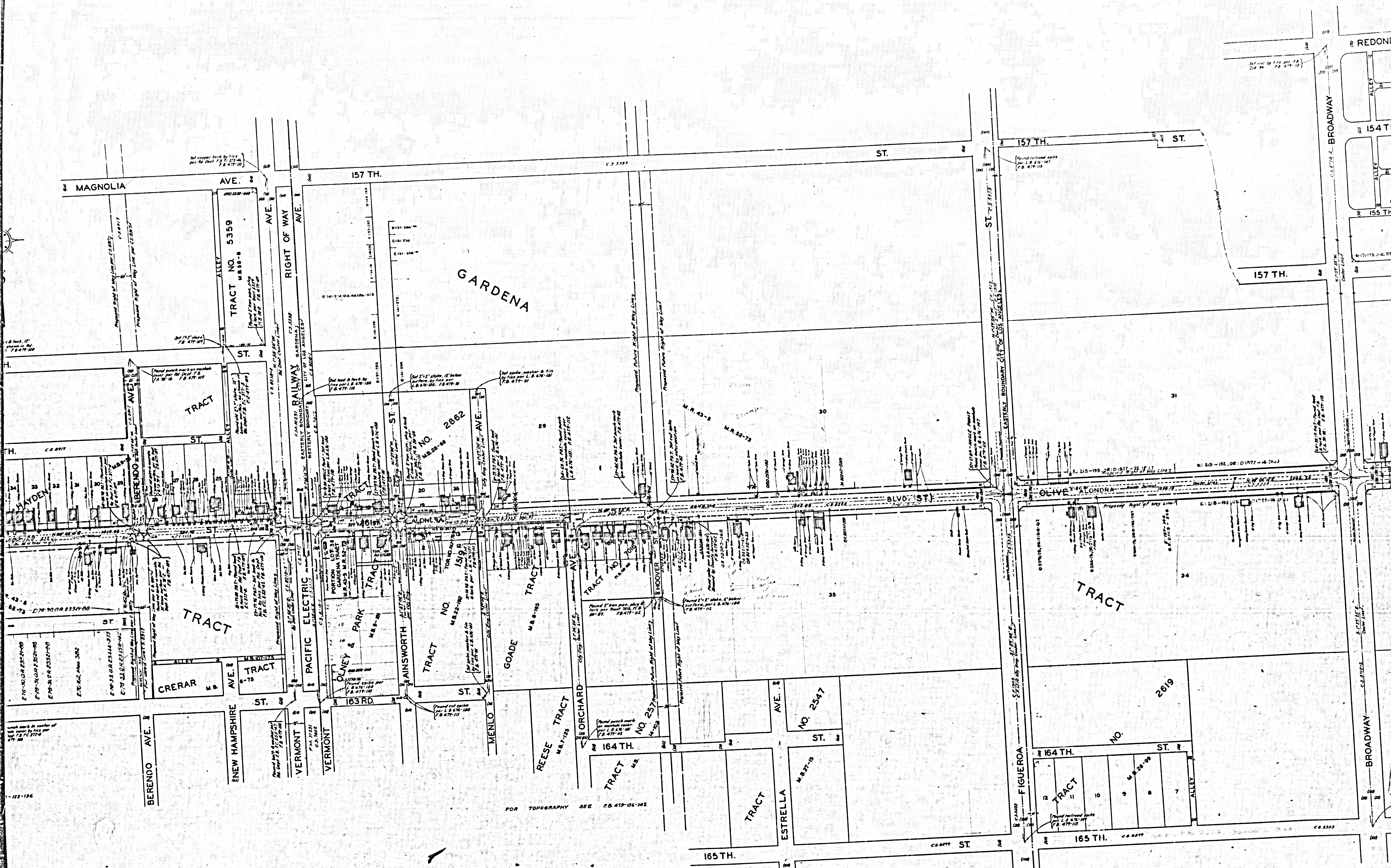
ALONDRAMAP OF BLVD
 CENTER STREET & OLIVE STREET
 FROM
 NORMANDIE AVENUE
 TO
 LOS ANGELES-ORANGE COUNTY BOUNDARY
 COUNTY SURVEYORS MAP NO B-686
 SHEET NO 1 OF 8 SHEETS
 SCALE - 1 INCH = 100 FT.

JOB NUMBER 7057.
 J.E. ROCKHOLD - COUNTY SURVEYOR
 SURVEYED - DEC. 1931 TO JUNE 1932.
 SURVEYED UNDER INSTRUCTIONS OF THE
 BOARD OF SUPERVISORS PER ORDER DATED
 JUNE 8, 1931.
 BEARINGS ARE BASED ON THE BEARING OF
 OLIVE STREET AS SHOWN ON C.S.B. 10-1.
 FB. 478-101-116 132-141

FIELD WORK BY L.D. MOORE
 OFFICE WORK BY D.L. PACK
 F.A. WOOD
 CHECKED BY D.M. FINLEY
 FOR INDEX MAP SEE C.S.B. 686-8
 INDEX 26

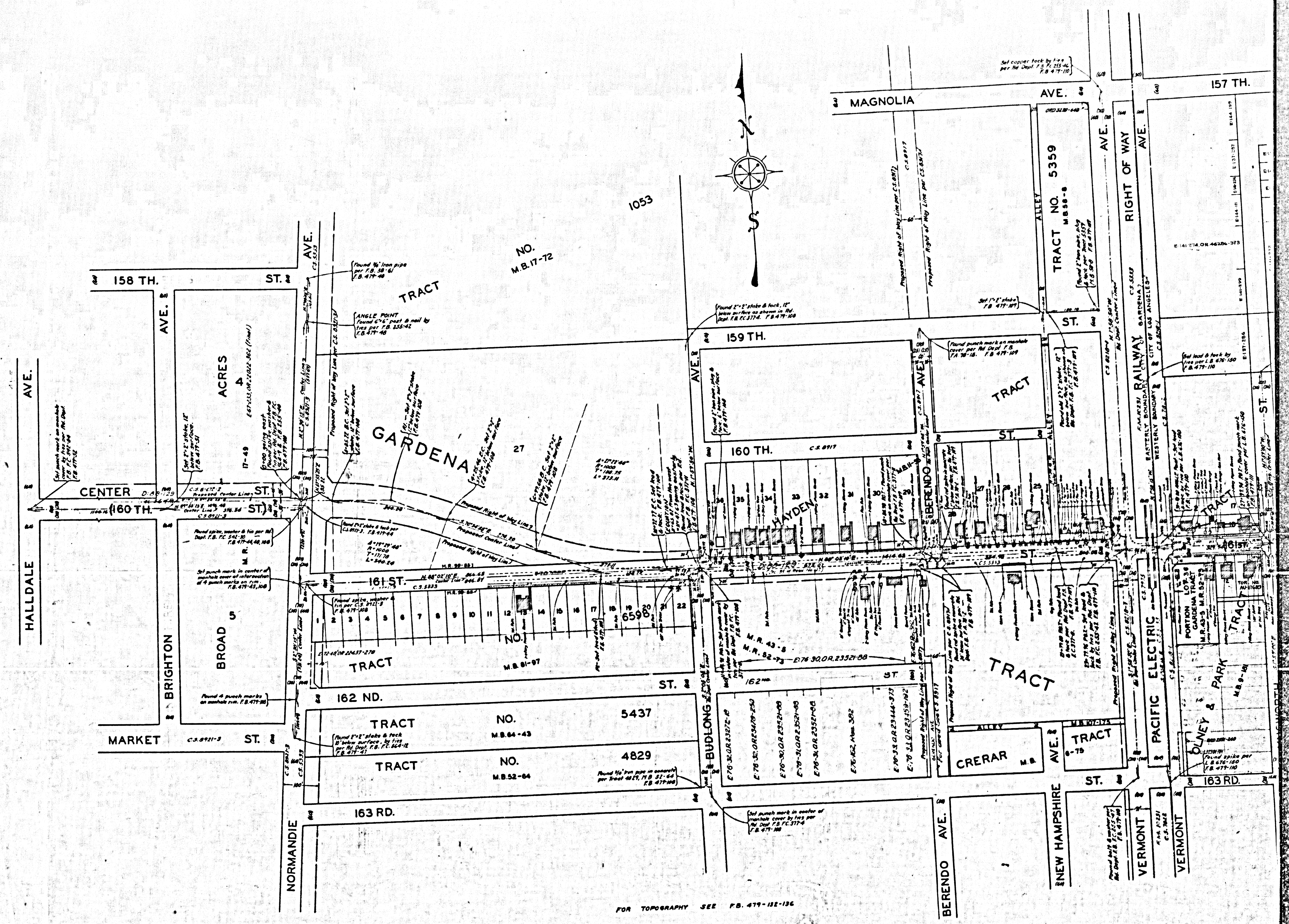
CSB-686-1
 A1 OF A4

SHEET NO. 1 OF 8 SHEETS
 COUNTY SURVEYORS MAP NO. B-686
 SHEET NO. 1 OF 8 SHEETS
 COUNTY SURVEYORS MAP NO. B-686



FOR TOPOGRAPHY SEE F.B. 419-126-142

CS B-686-1
A3 OF A4



FOR TOPOGRAPHY SEE P.B. 479-122-126

CSB-686-1
A 4 OF A 4



CSB-686-1
A2 OF A4