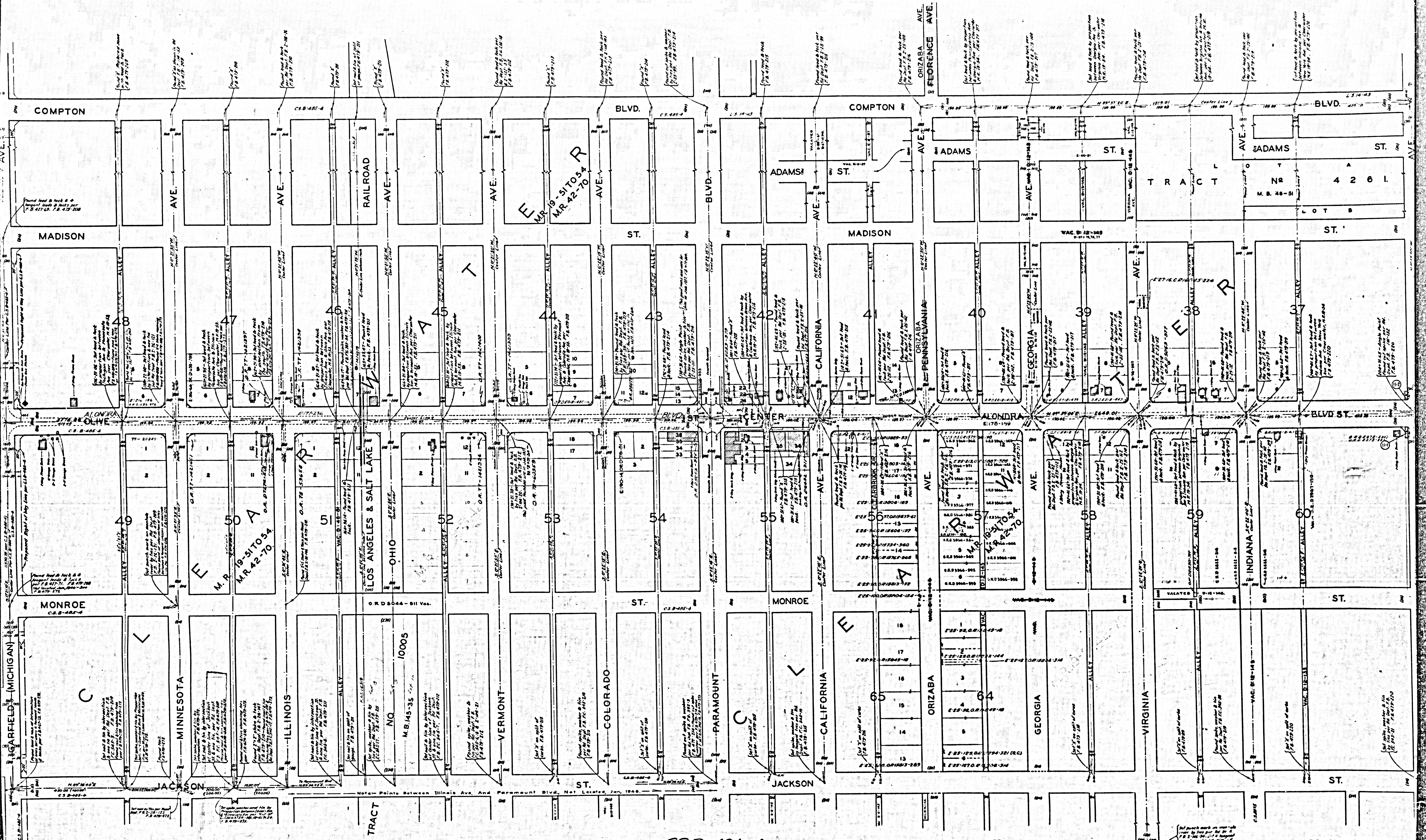


ALONDRA MAP OF BLVD
CENTER STREET & OLIVE STREET
 FROM
 NORMANDIE AVENUE
 TO
LOS ANGELES-ORANGE COUNTY BOUNDARY
 COUNTY SURVEYORS MAP NO B-666
 SHEET NO 4 OF 8 SHEETS
 SCALE - 1 INCH = 100 FT.

JOB NUMBER 7057
 J.E. ROCKHOLD - COUNTY SURVEYOR
 SURVEYED - DEC. 1931 TO JUNE 1932.
 SURVEYED UNDER INSTRUCTIONS OF THE
 BOARD OF SUPERVISORS PER ORDER DATED
 JUNE 8 1931.
 BEARINGS ARE BASED ON THE BEARING OF
 OLIVE STREET AS SHOWN ON C.S.B. 181-1.
 F.B. 479-207-227, 244-258
 FIELD WORK BY... L.D. MOORE.
 OFFICE WORK BY... F. A. WOOD.
 HUMPHIGGS.
 CHECKED BY... D.M. FINLEY.
 FOR INDEX MAP SEE C.S.B. 686-8
 Revised, Jan., 1944 - J.S. Price.

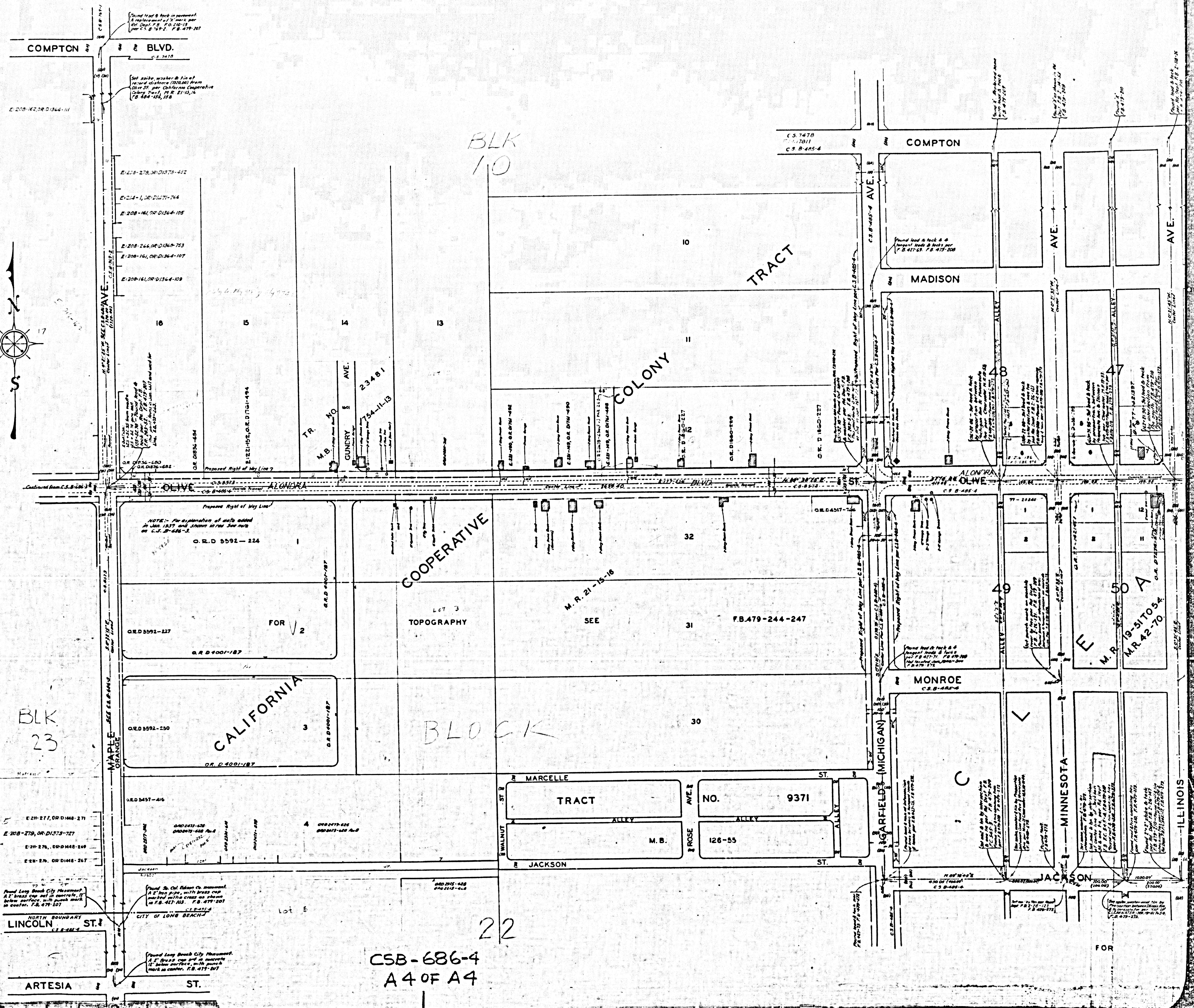
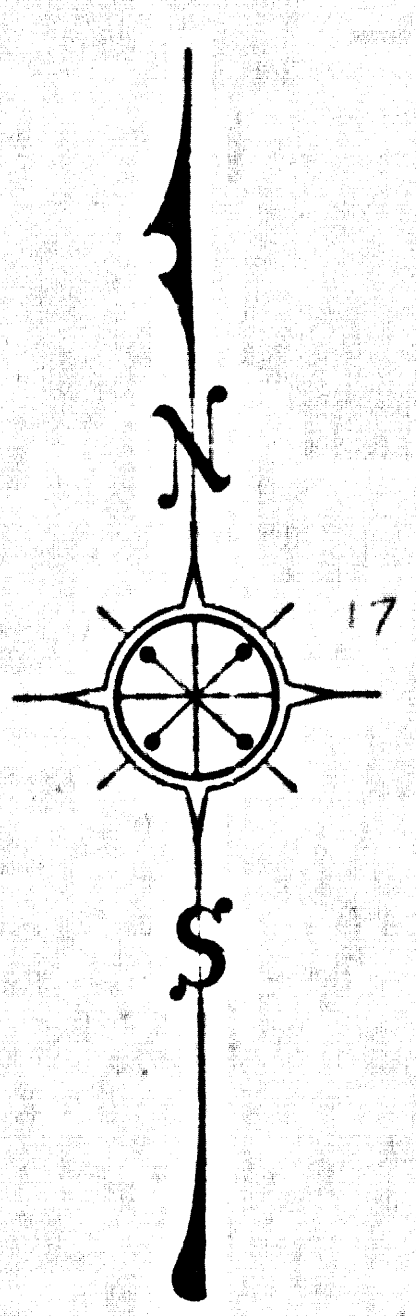
INDEX 32 - 33

CSB-686-4
 A1 OF A4



TOPOGRAPHY CSB-686-4
A3 OF A4

F.B. 479-247-253



BLK 10

TRACT

COOPERATIVE

TOPOGRAPHY

BLOCK

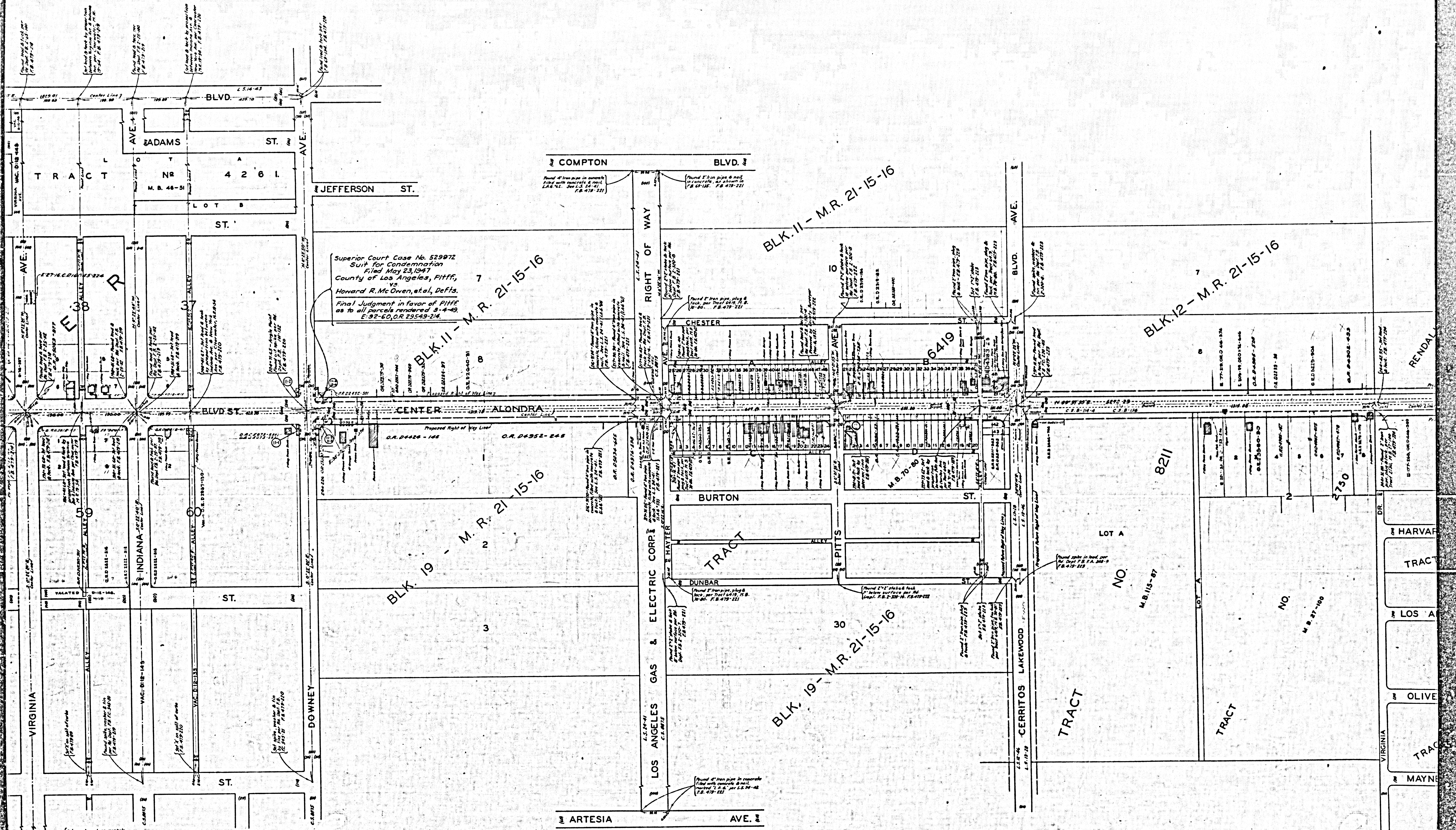
MARCELLE TRACT

NO. 9371

BLK 23

22

CSB-686-4
A4 OF A4



Superior Court Case No. 529972
 Suit for Condemnation
 Filed May 23, 1947
 County of Los Angeles, Pltff,
 vs.
 Howard R. Mc Owen, et al, Defts.
 Final Judgment in favor of Pltff
 as to all parcels rendered 5-4-49
 E: 92-60, O.R. 29549-214

BLK. 11 - M.R. 21-15-16

BLK. 19 - M.R. 21-15-16

BLK. 11 - M.R. 21-15-16

BLK. 12 - M.R. 21-15-16

BLK. 19 - M.R. 21-15-16

F.B. 479-247-253

FOR TOPOGRAPHY SEE

F.B. 479-253-258

CSB-686-4
 A2 OF A4