

ALONDRA BOULEVARD
 MAP OF
 CENTER STREET & OLIVE STREET
 FROM
 NORMANDIE AVENUE
 TO
 LOS ANGELES-ORANGE COUNTY BOUNDARY
 COUNTY SURVEYORS MAP NO B-686
 SHEET NO 6 OF 8 SHEETS
 SCALE - 1 INCH = 100 FT.

JOB NUMBER 7057
 J. ROCKHOLD - COUNTY SURVEYOR
 SURVEYED - DEC. 1931 TO JUNE 1932
 SURVEYED UNDER INSTRUCTIONS OF THE
 BOARD OF SUPERVISORS PER ORDER DATED
 JUNE 8, 1931.
 BEARINGS ARE BASED ON THE BEARING OF
 OLIVE STREET AS SHOWN ON C.S.B-181-1.
 F.B. 494-27-36, 60-77, 90-94.
 FIELD WORK BY... L.D. MOORE.
 OFFICE WORK BY... W.H. KRELLE.
 CHECKED BY... D.M. FINLEY.
 FOR INDEX MAP SEE C.S.B-686-9
 Revised Jan. 1952. R.W. Wallister.

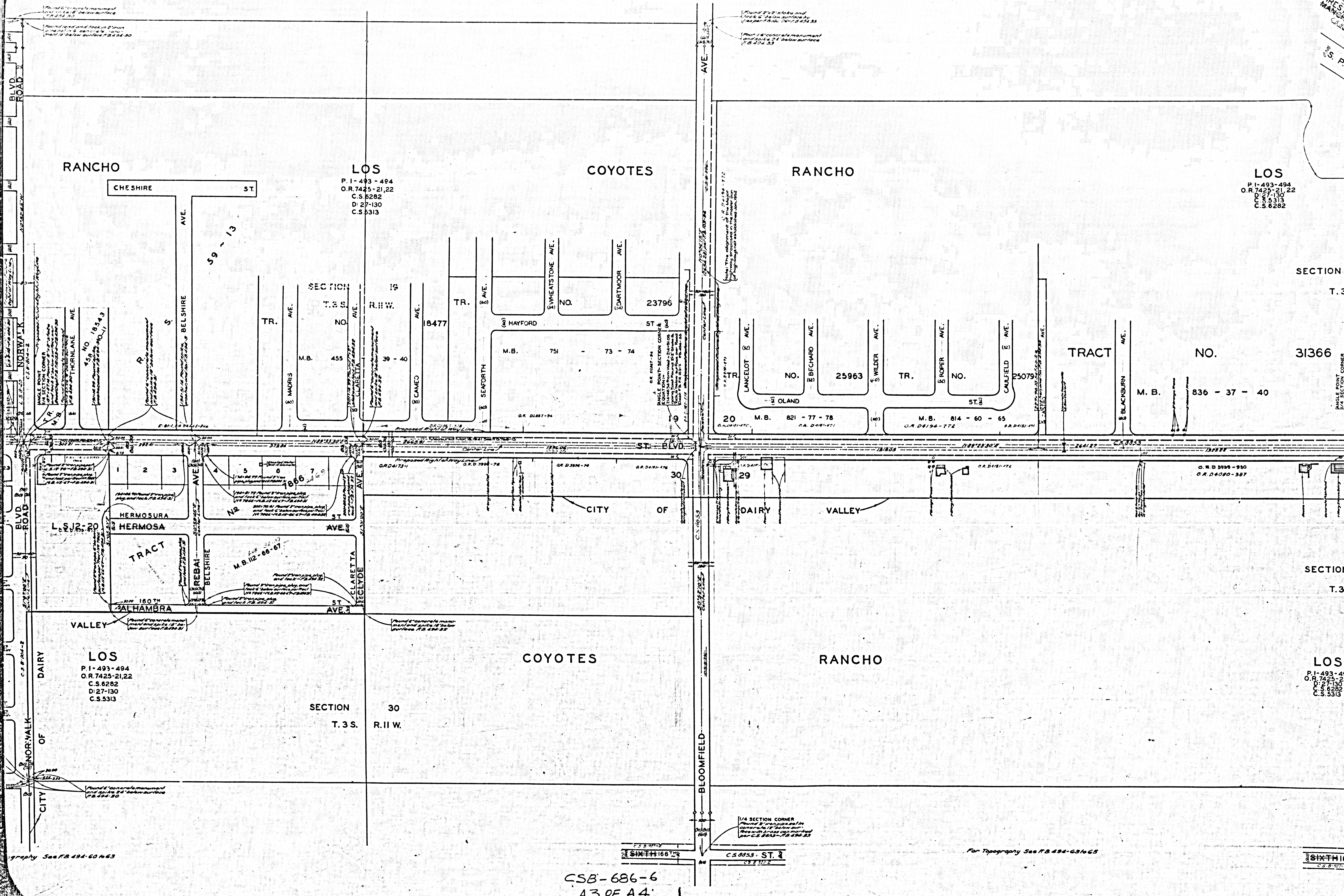
SHEET NO 6 OF 8 SHEETS
 COUNTY SURVEYORS MAP NO B-686

SHEET NO 6 OF 8 SHEETS
 COUNTY SURVEYORS MAP NO B-686

CSB-686-6
 11 OF 14

For Topography See F.B. 494-92 to 94

FIRESTICK MARKS
C.S. 5313



RANCHO

LOS

COYOTES

RANCHO

LOS

P. 1-493-494
O.R. 7425-21, 22
C.S. 6282
D: 27-130
C.S. 5313

P. 1-493-494
O.R. 7425-21, 22
C.S. 6282
D: 27-130
C.S. 5313

SECTION
T. 3

SECTION
T. 3 S

LOS

SECTION
T. 3 S.

COYOTES

RANCHO

VALLEY

LOS
P. 1-493-494
O.R. 7425-21, 22
C.S. 6282
D: 27-130
C.S. 5313

LOS
P. 1-493-494
O.R. 7425-21, 22
C.S. 6282
D: 27-130
C.S. 5313

CSB-686-6
A3 OF A4

Topography See P.B. 494-60463

For Topography See P.B. 494-63465

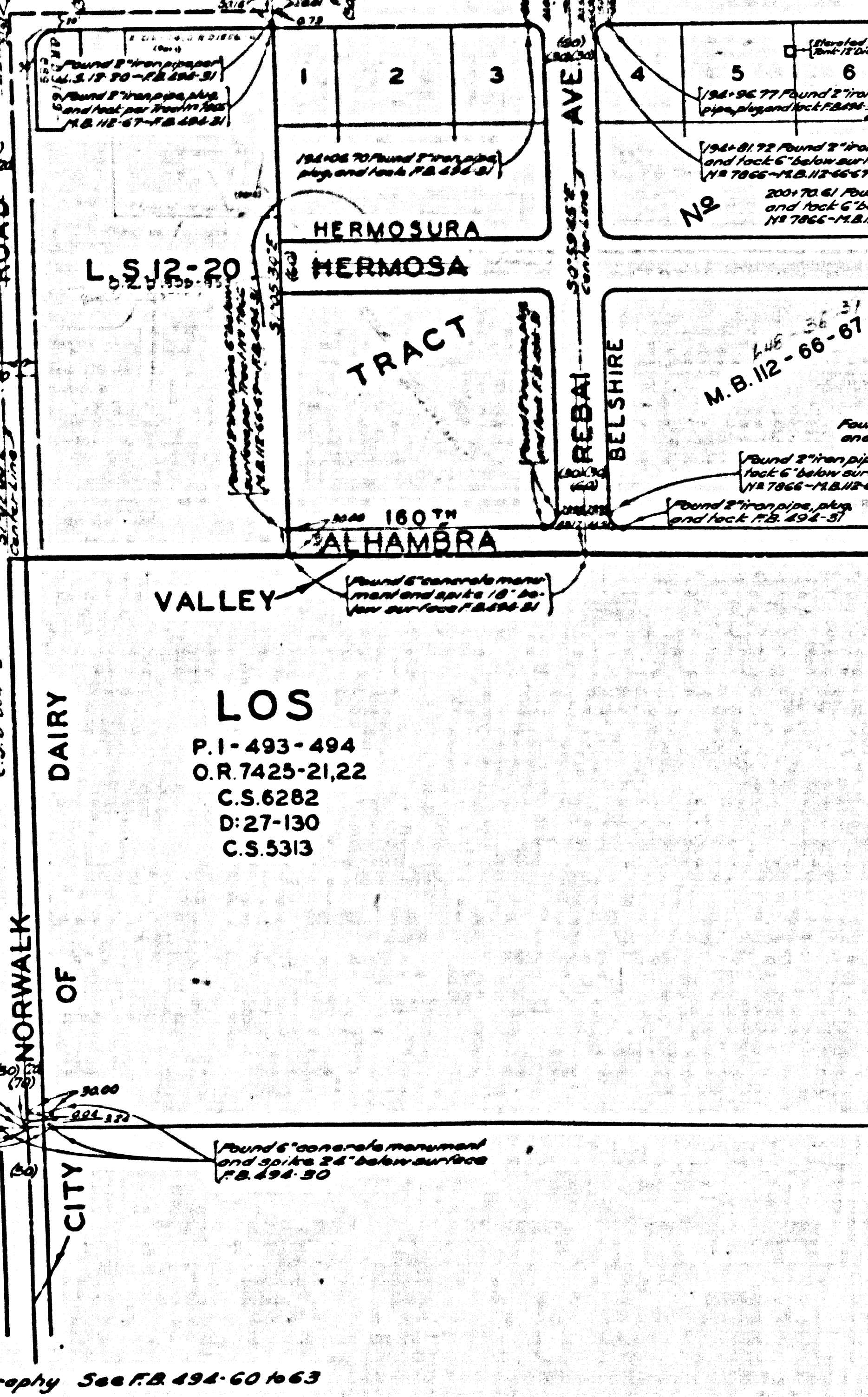
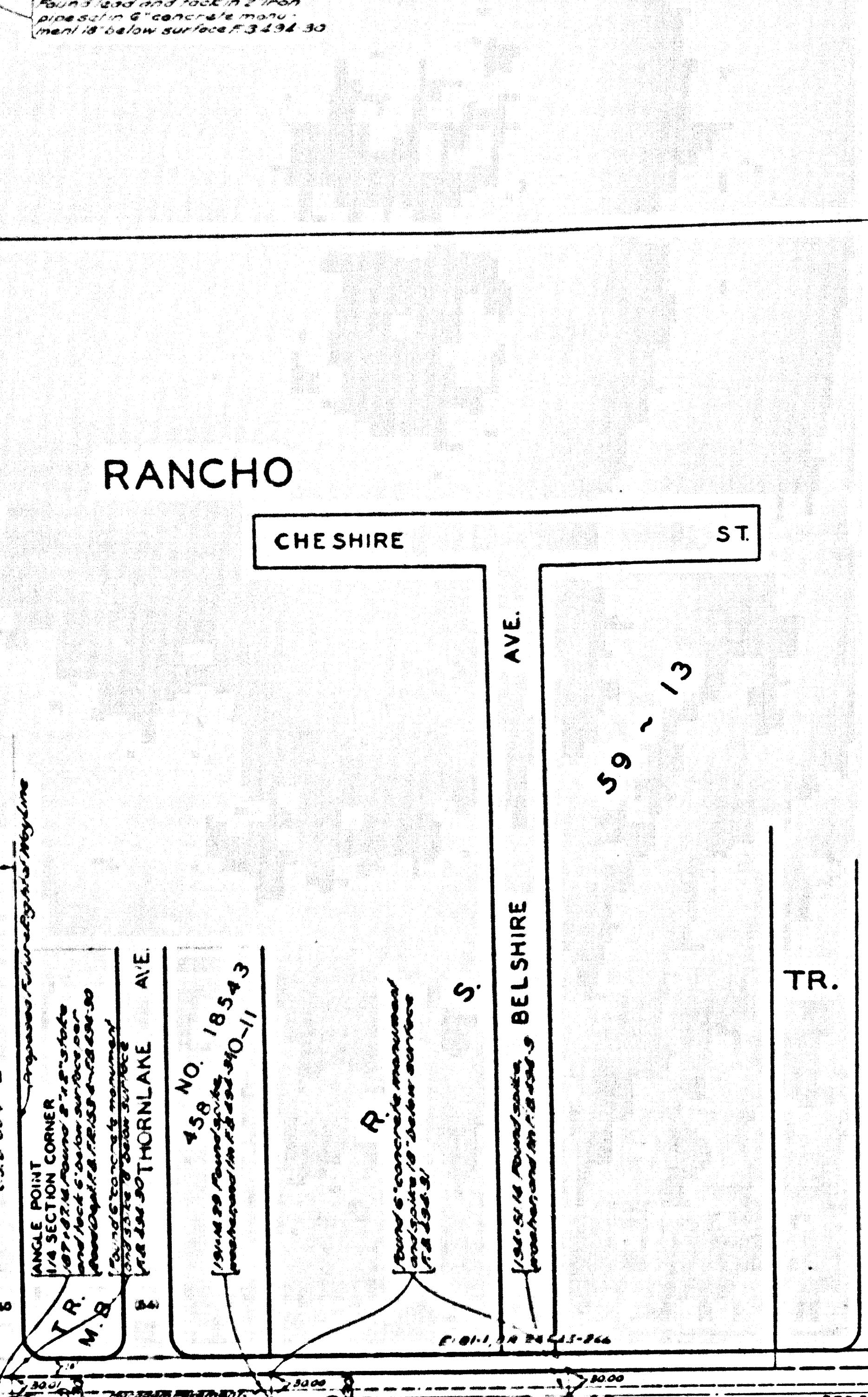
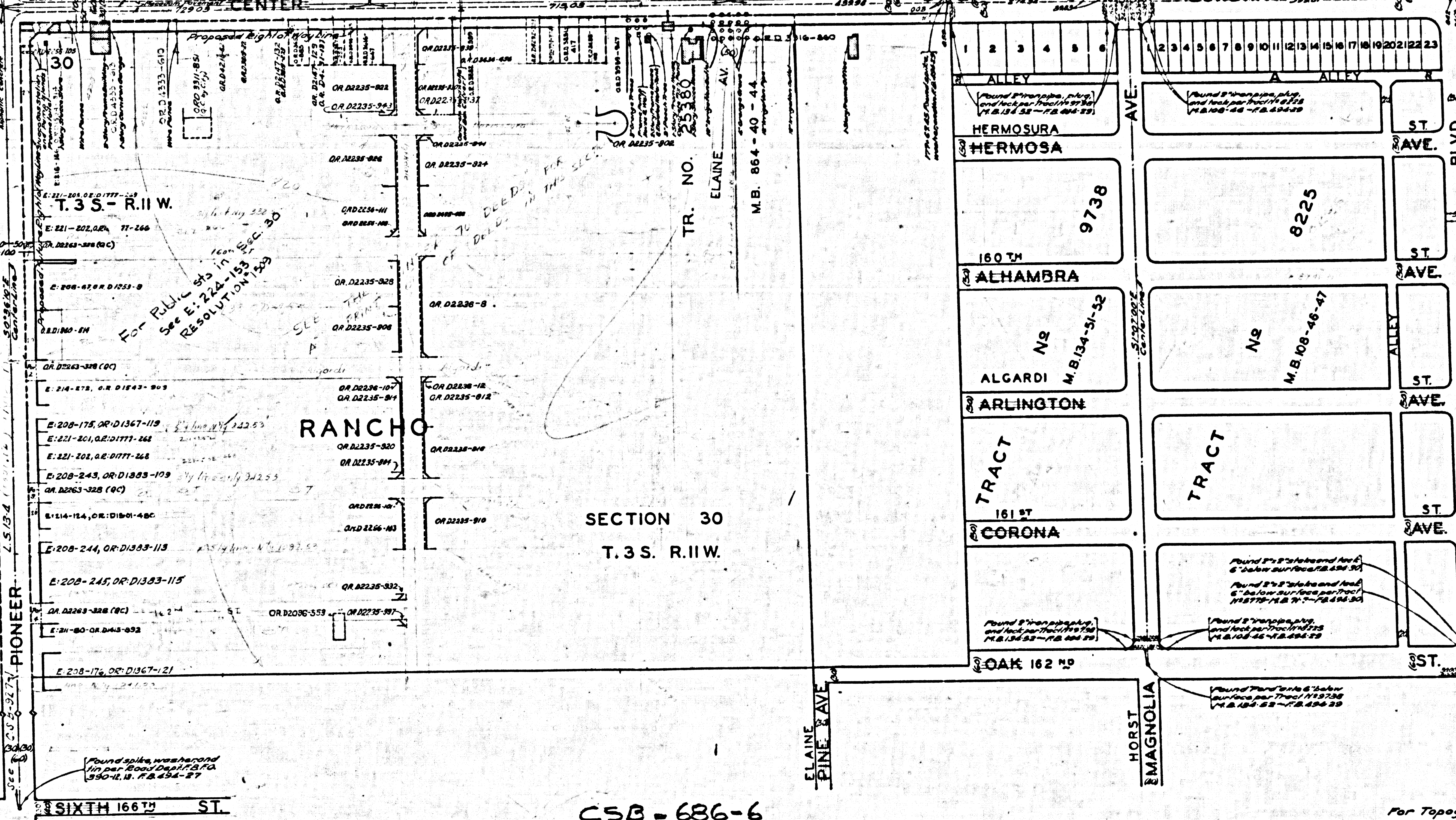
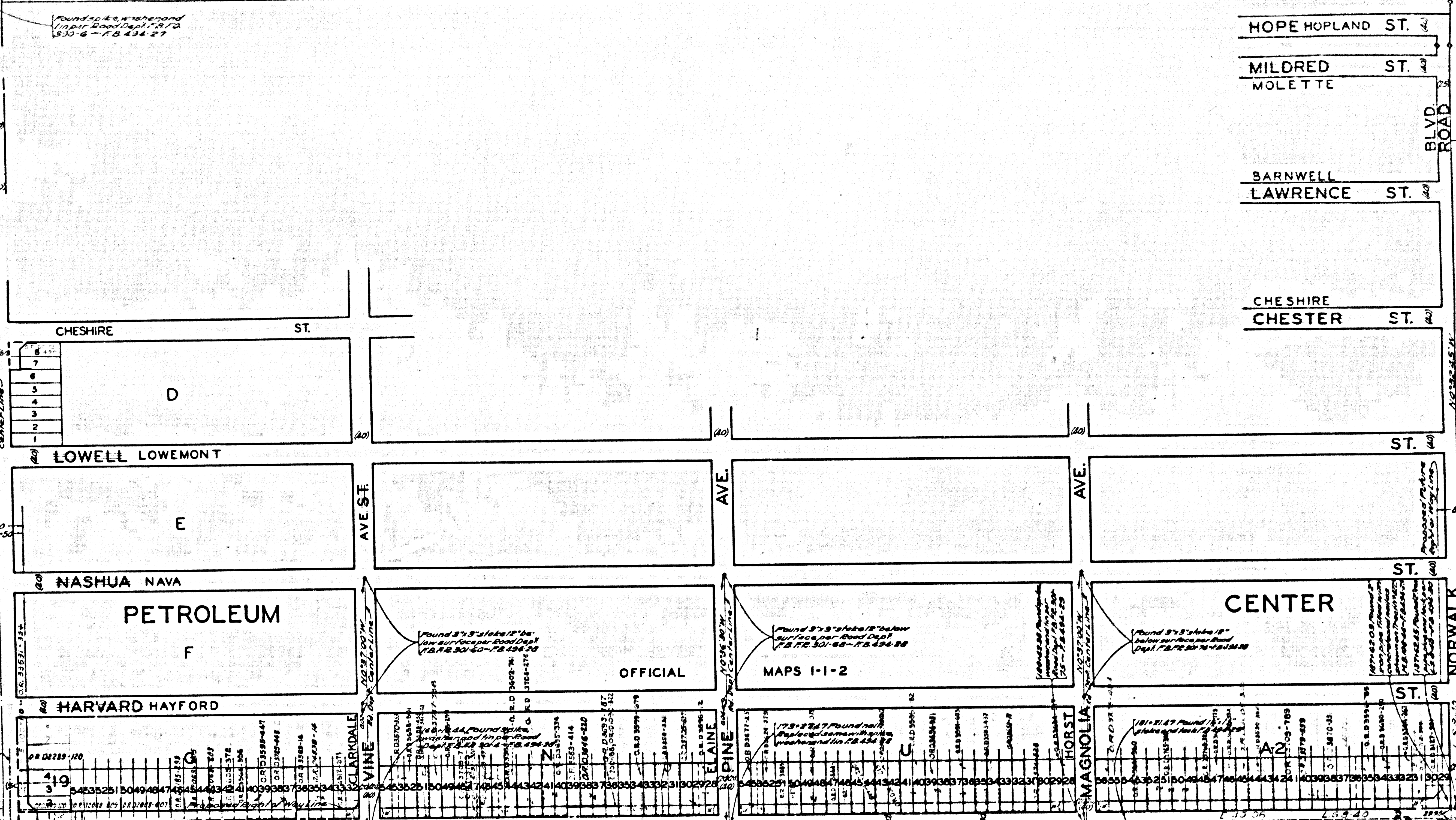
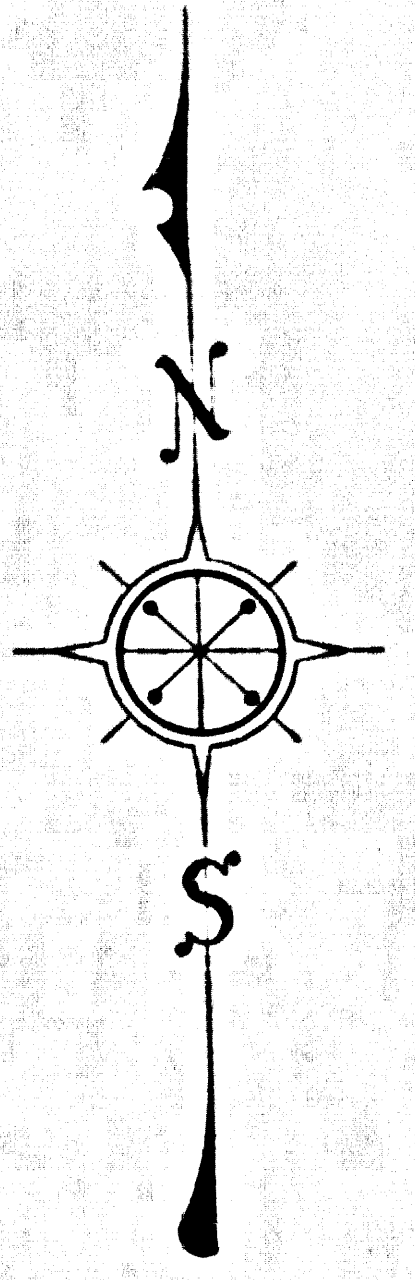
SIXTH 166 ST

SIXTH 166 ST

SIXTH 166 ST

SHEET 128 OF 128
COUNCIL DISTRICT 12

EXCELSIOR DR.
BLVD.
FERINA ST.
FERNWOOD DR.



T. 3 S.-R. 12 W.

T. 3 S. R. 11 W.

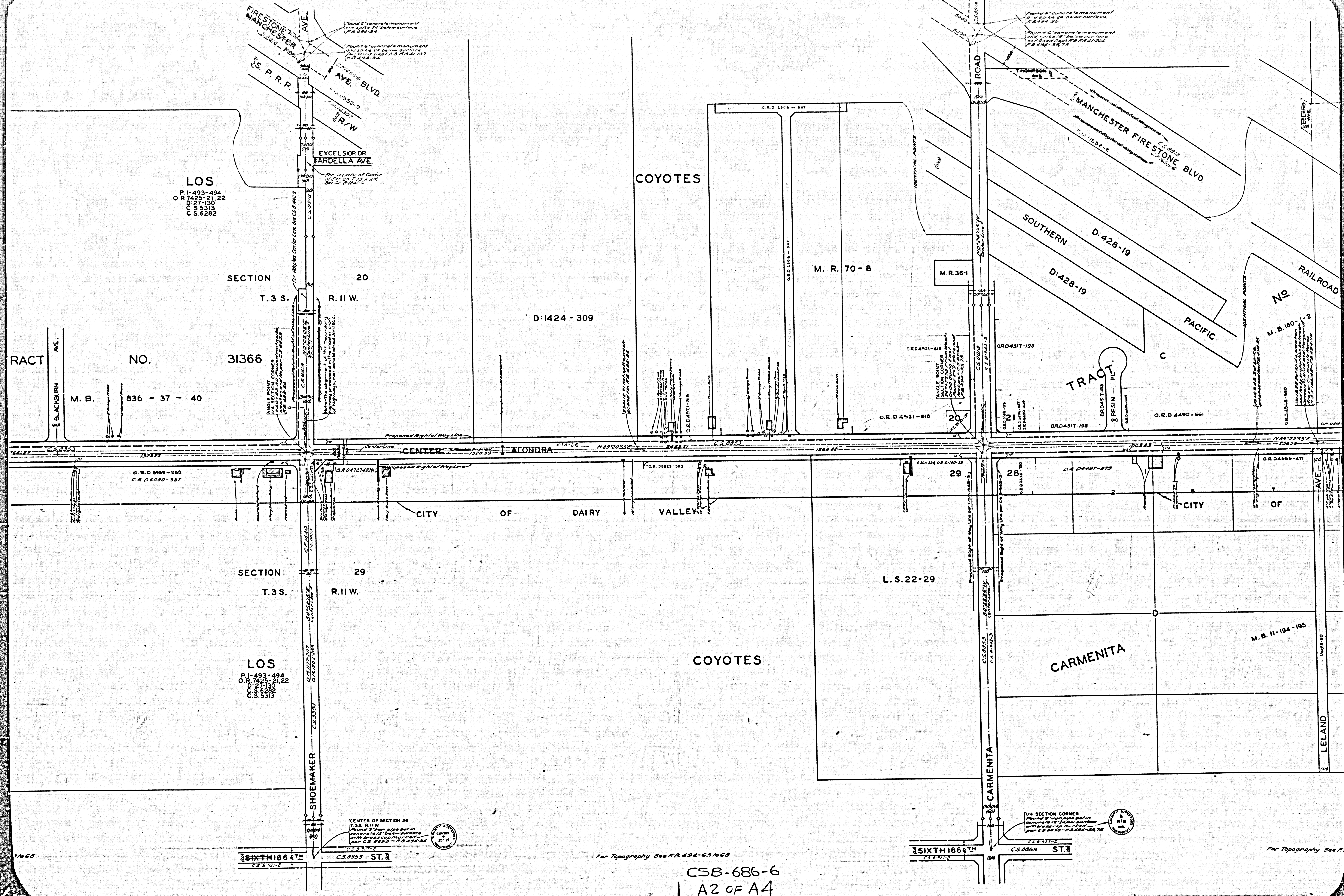
SECTION 30
T. 3 S. R. 11 W.

LOS
P. 1-493-494
OR 7425-2122
C. S. 6282
D. 27-130
C. S. 5313

CSB-686-6
A 4 OF A 4

For Topography See R. 494-60 H63

SHEET 128 OF 128
COUNCIL DISTRICT 12



LOS
 P.I. 493-494
 O.R. 7425-21-22
 C.S. 5313
 C.S. 6262

SECTION 20
 T.3S. R.11W.

TRACT NO. 31366

M.B. 836 - 37 - 40

COYOTES

M.R. 70-8

M.R. 36-1

D:1424 - 309

SOUTHERN PACIFIC RAILROAD

TRACT C

M.B. 160 - 1-2

CITY OF DAIRY VALLEY

L.S. 22-29

COYOTES

CARMENITA

M.B. 11-194-195

LOS
 P.I. 493-494
 O.R. 7425-21-22
 C.S. 5313

SECTION 29
 T.3S. R.11W.

CENTER OF SECTION 29
 T.3S. R.11W.
 Found 12" iron pipe and in
 concrete 12" below surface
 with brass cap marked
 per C.S. 8885 - FB 434-84

1/4 SECTION CORNER
 Found 12" iron pipe and in
 concrete 12" below surface
 with brass cap marked
 per C.S. 8885 - FB 434-84

SIXTH 166 ST
 C.S. 877-2

SIXTH 166 ST
 C.S. 885-9 ST. 3

For Topography See FB 494-631668

For Topography See F.

CSB-686-6
 A2 OF A4