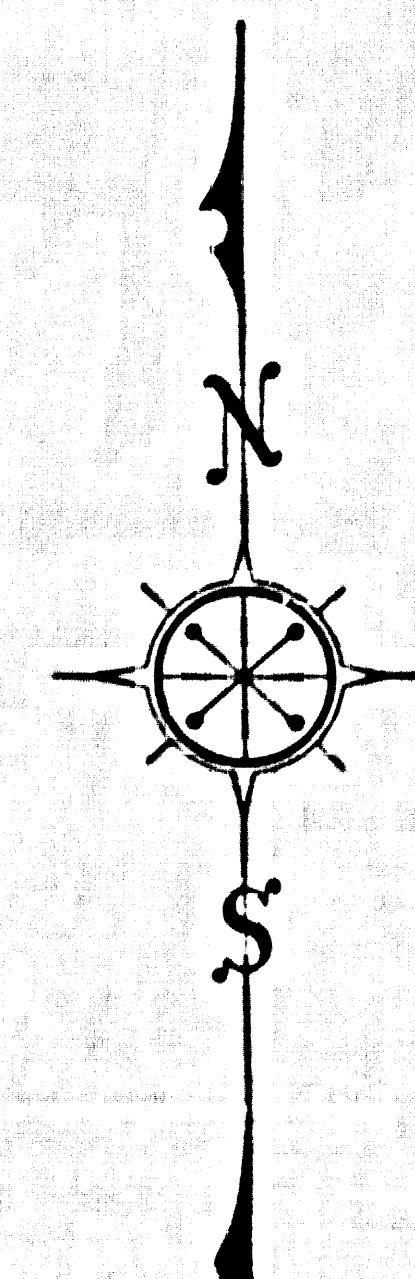


FOR TOPOGRAPHY SEE F. B. 494-108-111

COYOTES



ALONDRA BOULEVARD
 MAP OF
 CENTER STREET & OLIVE STREET
 FROM
 NORMANDIE AVENUE
 TO
 LOS ANGELES-ORANGE COUNTY BOUNDARY

COUNTY SURVEYORS MAP NO B-686
 SHEET NO 7 OF 8 SHEETS
 SCALE - 1 INCH = 100 FT.

JOB NUMBER 7057.
 J. ROCKHOLD - COUNTY SURVEYOR
 SURVEYED - DEC. 1931 TO JUNE, 1932.
 SURVEYED UNDER INSTRUCTIONS OF THE
 BOARD OF SUPERVISORS PER ORDER DATED
 JUNE 9, 1931.
 BEARINGS ARE BASED ON THE BEARING OF
 OLIVE STREET AS SHOWN ON C.S.B-181-I.

F. B. 494-77-90, 94-III.
 FIELD WORK BY... L.D. MOORE.
 OFFICE WORK BY... W.H. KRELLE.
 K.V. MORIN.
 CHECKED BY... D.M. FINLEY.

For INDEX MAP SEE C.S.B-686-8
 Revised December, 1931 BY W.M.P. ALLEN

INDEX 24

CSB-686-7
 A1 OF A4

SHEET NO 1 OF 8 SHEETS
 COUNTY SURVEYORS MAP NO B-686

SHEET NO 1 OF 8 SHEETS
 COUNTY SURVEYORS MAP NO B-686

EXCELSIOR
OLD LOS ANGELES
SAN DIEGO STATION

TRACT No 18976

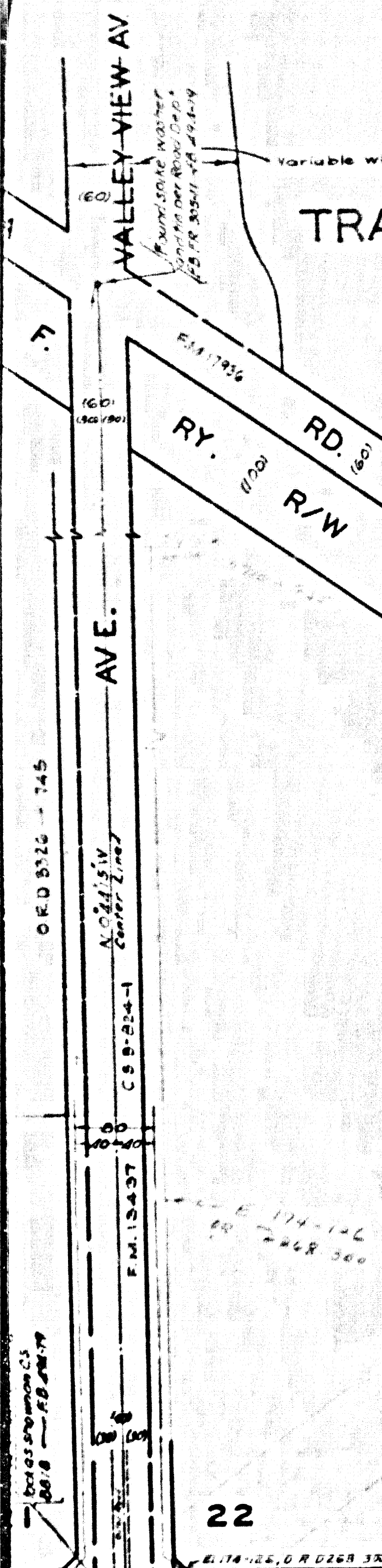
M.B. 482 - 10 - 17

SECTION 22

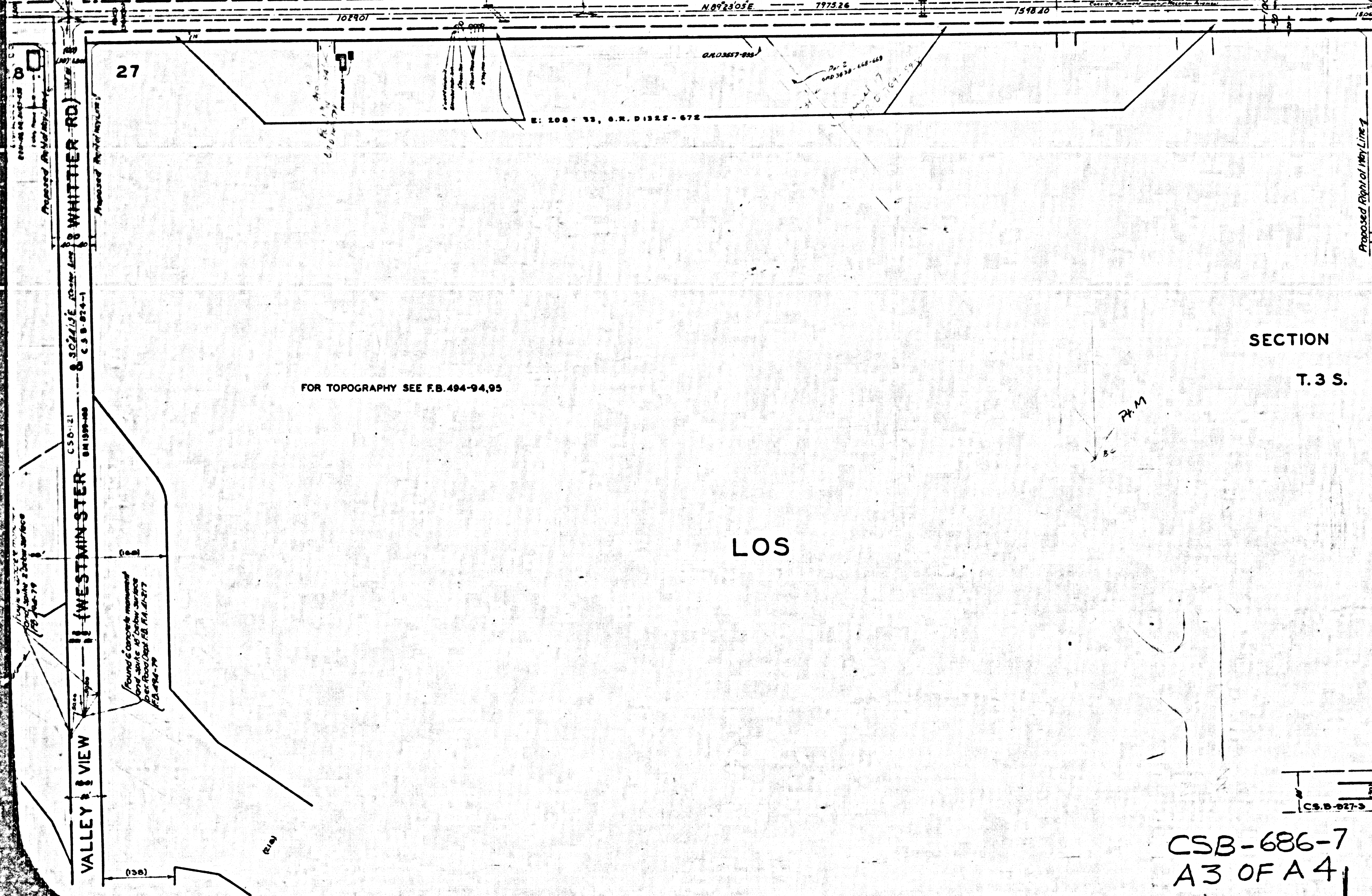
COYOTES

T. 3 S. R. 11 W.

P-1-493-494
OR 7425-21,22
D. 27-130
C.S. 5313
C.S. 6282



DIAGONAL



SECTION 27

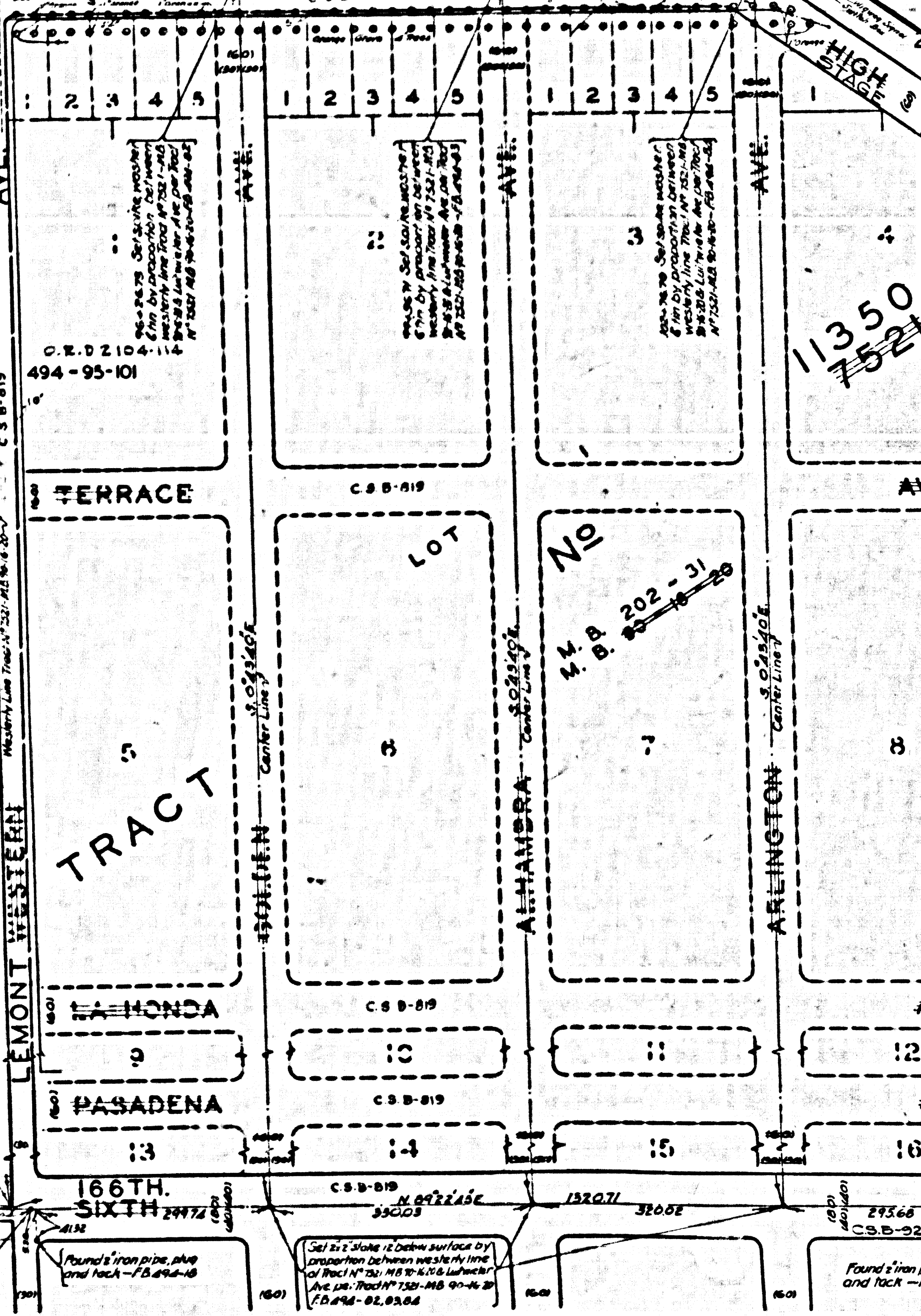
T. 3 S.

R. 11 W.

LOS COYOTES

FOR TOPOGRAPHY SEE F.B. 494-94,95

FOR TOPOGRAPHY SEE F.B.



TRACT

LA HONDA

PASADENA

SIXTH

CSB-686-7
A3 OF A4

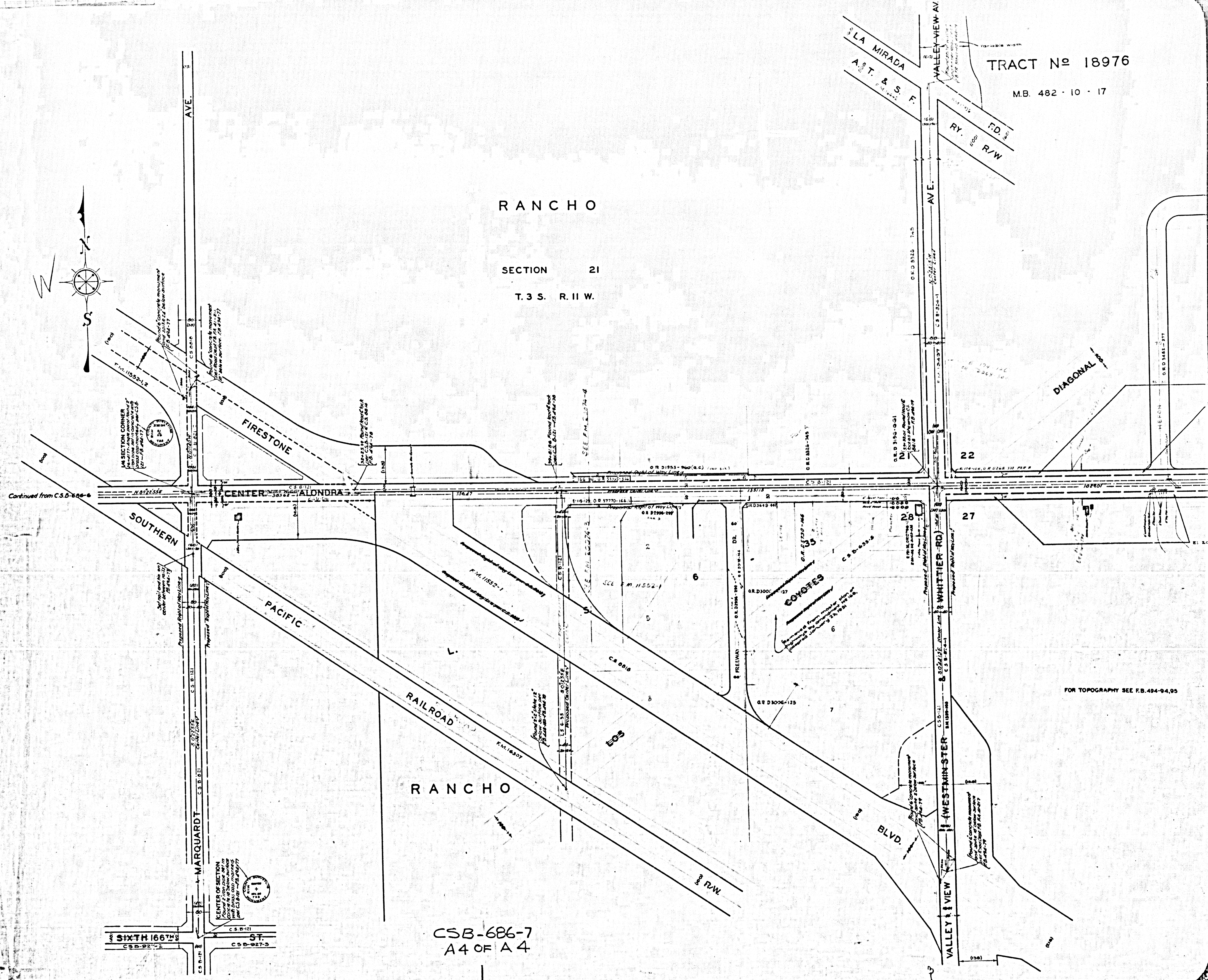
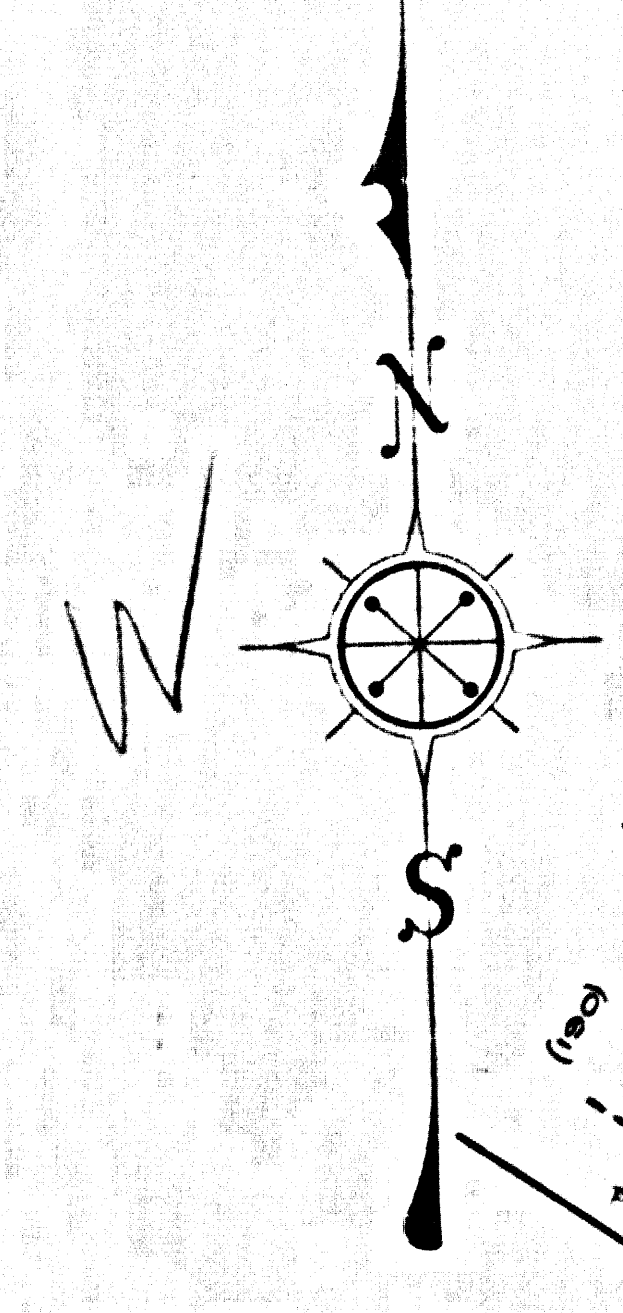
EASTERLY BOUNDARY LINE OF LOS ANGELES COUNTY

SHEET No. 1 OF 8 SHEETS
CONSULT SURVEYORS MAP No. B-88

SHEET No. 1 OF 8 SHEETS
CONSULT SURVEYORS MAP No. B-88

TRACT No 18976
M.B. 482 · 10 · 17

RANCHO
SECTION 21
T.3 S. R.11 W.



CSB-686-7
A4 OF A4

FOR TOPOGRAPHY SEE F.B. 494-94,95

Found 2 1/2" stone block 12" below surface of FB 441-81
Found 2 1/2" stone block 5" below surface of FB 441-81

ES

RANCHO

LOS

P-1-493-494
OR. 7425-21-22
D: 27-130
C.S. 5313
C.S. 6262

SECTION

T. 3 S.

R. II W.

EXCELSIOR ST
OLD LOS ANGELES &
SAN DIEGO STAGE RD

Found 2 1/2" stone block 12" below surface of FB 441-81
Found 2 1/2" stone block 5" below surface of FB 441-81

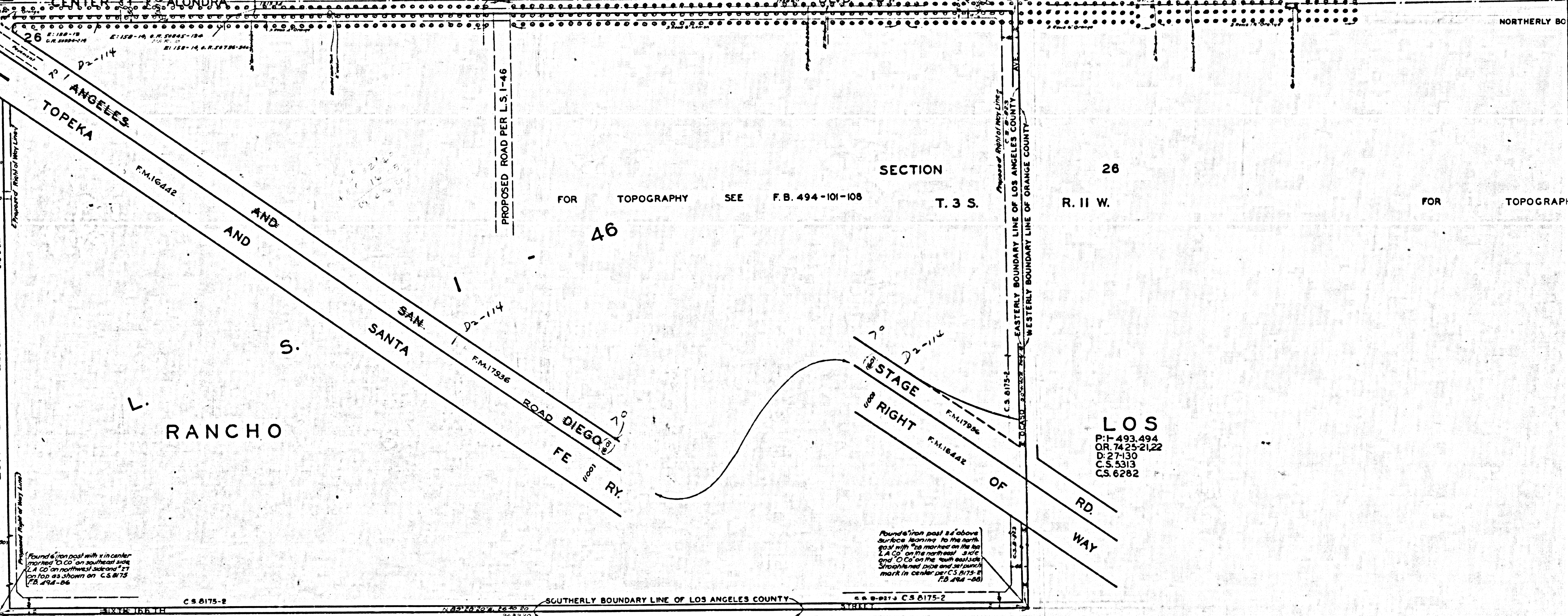
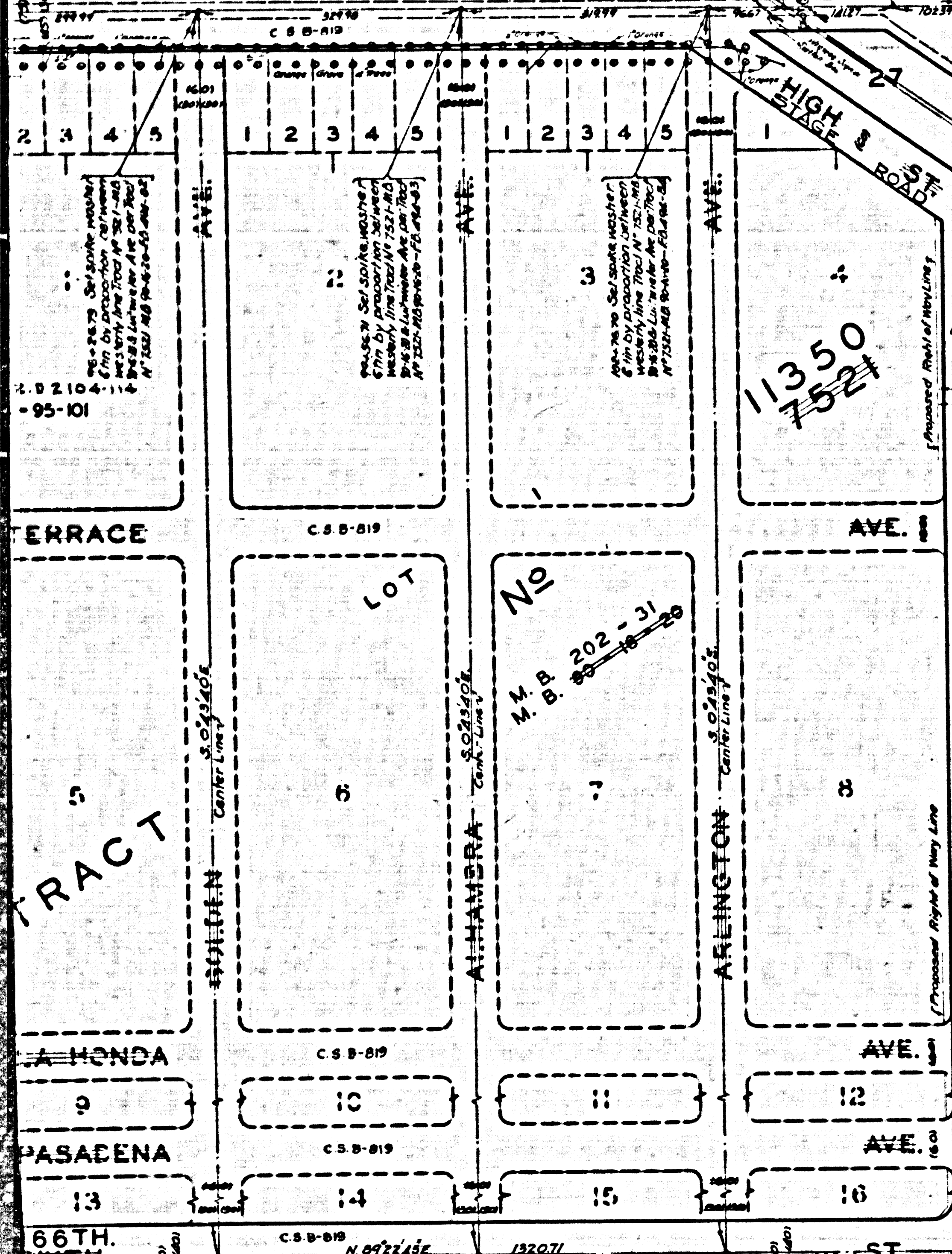
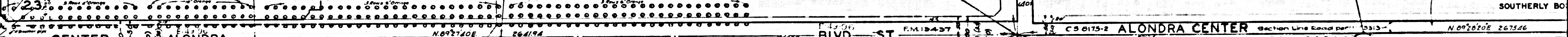
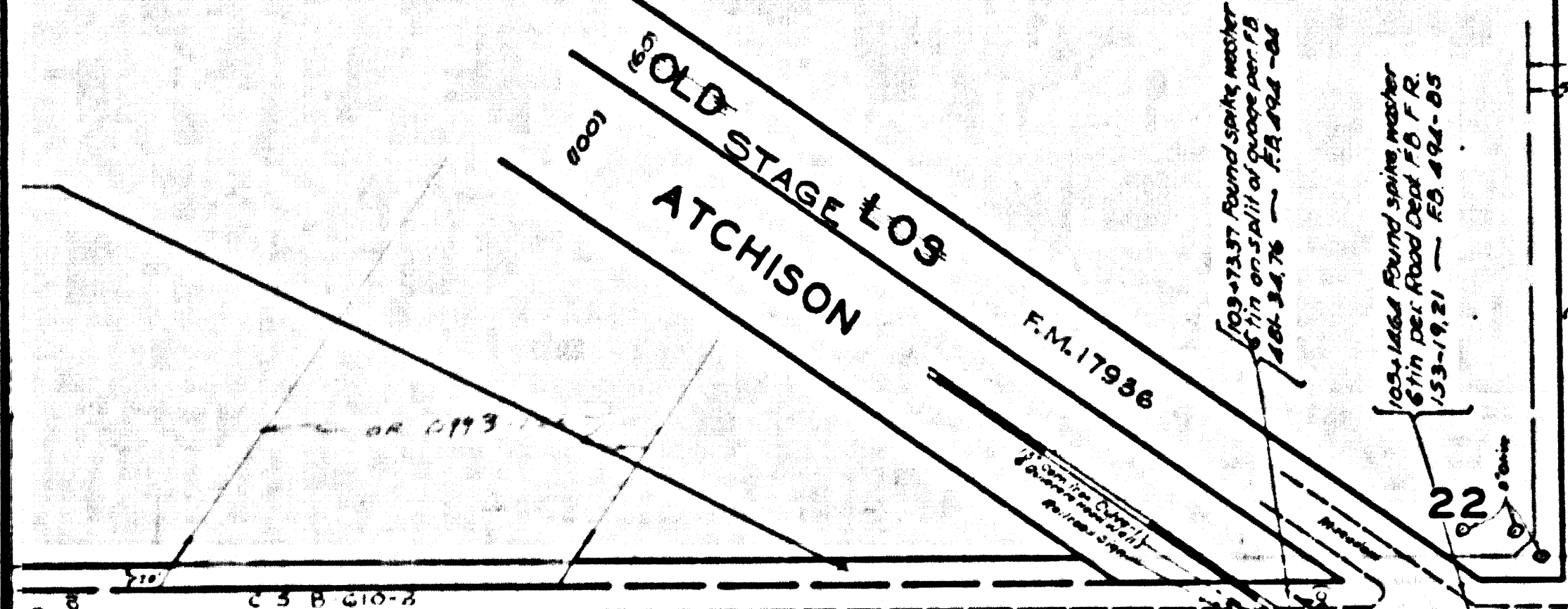
OLD STAGE LOS
ATCHISON

Found 2 1/2" stone block 12" below surface of FB 441-81
Found 2 1/2" stone block 5" below surface of FB 441-81

SECTION CORNER
C.S. 6175-2
C.S. 6175-1

Found 2 1/2" stone block 12" below surface of FB 441-81
Found 2 1/2" stone block 5" below surface of FB 441-81

Found the alignment of the roadway proposed in the master plan for highways not established by



ERRACE

TRACT

A HONDA

PASADENA

66TH
SIXTH

FOR TOPOGRAPHY SEE F.B. 494-101-108

46

SECTION

T. 3 S.

R. II W.

LOS

P-1-493-494
OR. 7425-21-22
D: 27-130
C.S. 5313
C.S. 6262

STAGE
RIGHT
OF
RD.
WAY

Found 2 1/2" stone block 12" above surface leaning to the north east with "12" marked on the top L.A. CO. on the north east. A "12" and "CO" on the south east side. Struck to find more and set mark in center of C.S. 6175-2 FB 441-81

Found 2 1/2" stone block 12" below surface of FB 441-81
Found 2 1/2" stone block 5" below surface of FB 441-81

Found 2 1/2" stone block 12" below surface of FB 441-81
Found 2 1/2" stone block 5" below surface of FB 441-81

SOUTHERLY BOUNDARY LINE OF LOS ANGELES COUNTY
NORTHERLY BOUNDARY LINE OF ORANGE COUNTY

CSB-686-7
A2 OF A4