

LOS ANGELES COUNTY
 FIRE STATION SITE NO. 66
 EATON CANYON AREA
 MAP OF
EATON CANYON
PATROL STATION LOT
 BEING A PORTION OF
 KINNELOA RANCH M.R. 70-52
 COUNTY SURVEYORS MAP NO. B-706.
 SCALE - AS SHOWN.

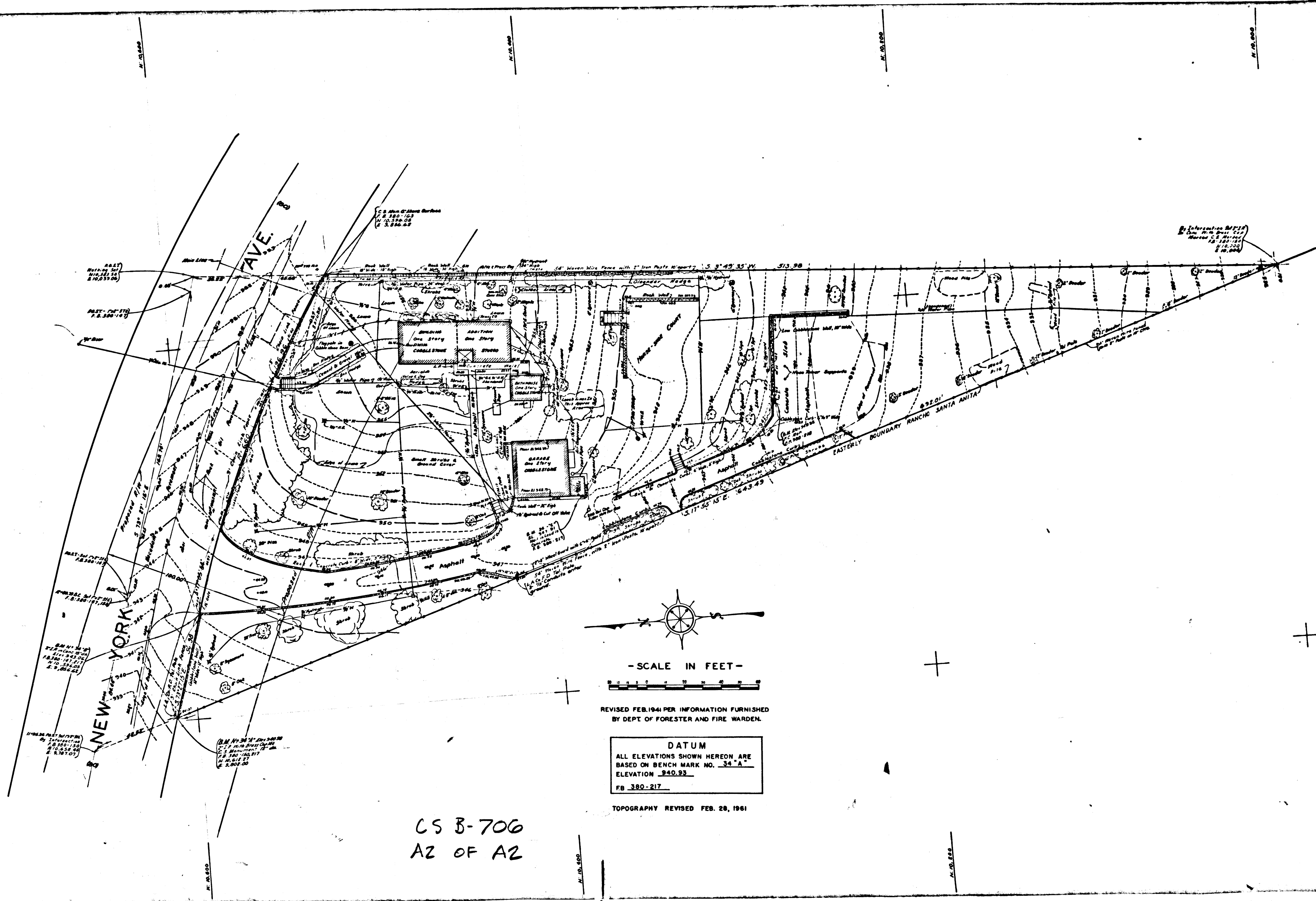
JOB NUMBER 8001
 J.E. ROCKHOLD - COUNTY SURVEYOR
 SURVEYED -
 BEARINGS ARE BASED ON THE BEARING OF
 NEW YORK AVE. PER C.S.B. 846.

FIELD WORK BY.....C. A. BENSON.
 OFFICE WORK BY.....W. J. LUCAS.
 F. A. WOOD.
 CHECKED BY.....A. DREW.

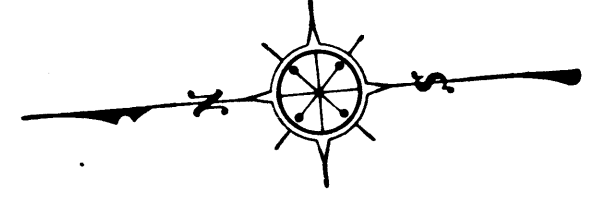
Revised April 1961 by T.E.B.

INDEX 56-88

CSB-706
 A1 of A2



CS B-706
A2 OF A2



- SCALE IN FEET -



REVISED FEB. 1941 PER INFORMATION FURNISHED
BY DEPT. OF FORESTER AND FIRE WARDEN.

DATUM
ALL ELEVATIONS SHOWN HEREON ARE
BASED ON BENCH MARK NO. 34 "A"
ELEVATION 940.93
FB 380-217

TOPOGRAPHY REVISED FEB. 28, 1961