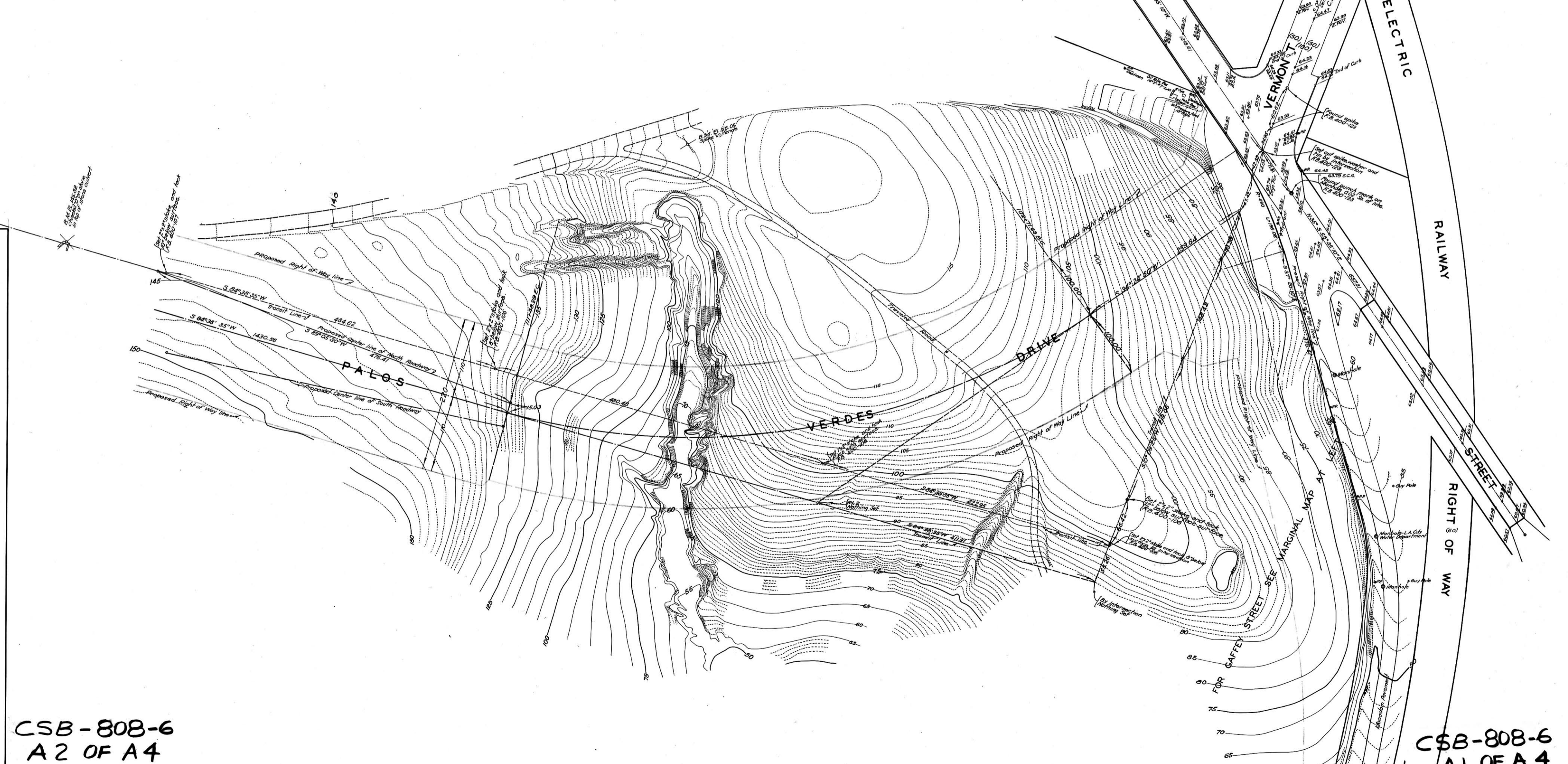


CSB-808-6
A4 OF A4



CSB-808-6
A2 OF A4

TOPOGRAPHIC MAP OF
PALOS VERDES DRIVE
FROM
ANAHEIM STREET
TO
GRANVIA LA COSTA
COUNTY SURVEYORS MAP NO 8-808
SHEET NO 6 OF 7 SHEETS
SCALE-1 INCH=50 FEET
WORK ORDER NO 7166
J.E. ROCKHOLD - COUNTY SURVEYOR
SURVEYED- OCTOBER - 1932
SURVEYED UNDER INSTRUCTIONS OF THE
BOARD OF SUPERVISORS PER ORDER DATED
OCTOBER 10 1932
BEARINGS ARE BASED ON THE BEARING OF
WESTERN AVENUE (PROPOSED) PER C.S.B-808-2
PLANE TABLE SURVEY
FIELD WORK BY TED M. WALSH
OFFICE WORK BY T.R. MONCLURE
CHECKED BY J.H. SMITH
For Alignment See C.S.B-808-Sheets 1, 2, 3, 4, 5
For Profile See C.S.B-808-Sheets 1, 2, 3, 4, 5
For Cross Sections See C.S.B-808-Sheets 1, 2, 3, 4, 5
For Grading Plan See C.S.B-808-Sheets 1, 2, 3, 4, 5
For relocation of constructed road to right of way see C.S.B-1028

CSB-808-6
A1 OF A4