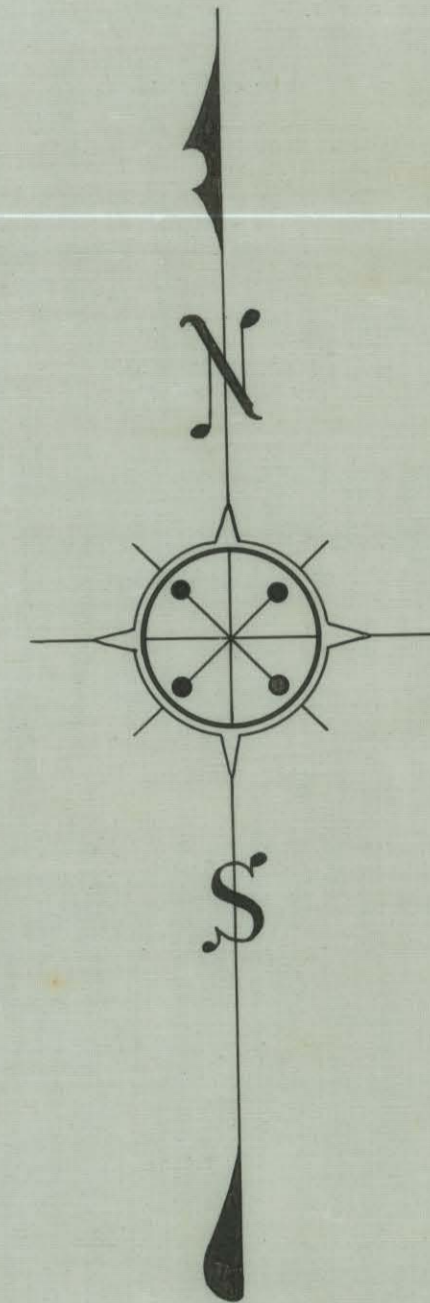
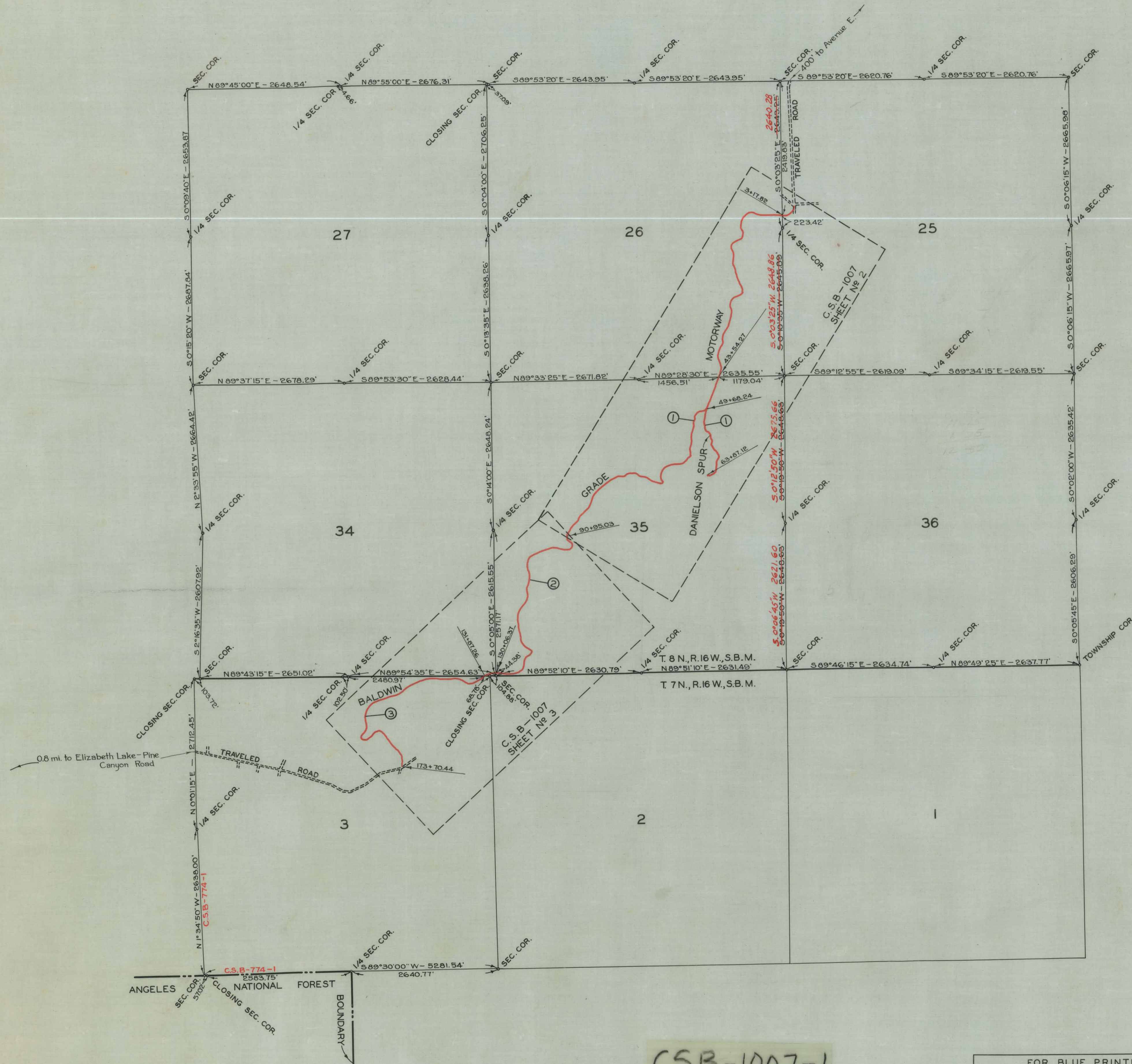


NOTE: BEARINGS AND DISTANCES SHOWN ON SECTION LINES WERE OBTAINED FROM C.S.B-975 SHEET NO.2



INDEX MAP OF
BALDWIN GRADE MOTORWAY
 FROM
 N.W. 1/4 OF SEC. 25, T. 8 N., R. 16 W., S.B.M.
 TO
 N.E. 1/4 OF SEC. 3, T. 7 N., R. 16 W., S.B.M.

COUNTY SURVEYORS MAP NO B-1007
 SHEET NO 1 OF 3 SHEETS

SCALE : 1 INCH = 1000 FEET.

JOB NUMBER 8019

J.E. ROCKHOLD - COUNTY SURVEYOR
 SURVEYED DEC. 1933 - MAR. 1934

BEARINGS ARE BASED ON THE BEARING OF
 EAST LINE SEC. 26, T. 8 N., R. 16 W. AS SHOWN
 ON C.S.B - 975 - 2

FIELD WORK BY... L. S. HAMMOND

OFFICE WORK BY... J. A. LYON

CHECKED BY... M. D. DARLING

INDEX 73

CSB-1007-1
 A1 OF A1

FOR BLUE PRINTING
 WIDTH OF MAP = 24 INCHES
 AREA / FOOT LENGTH =20'
 TOTAL AREA OF MAP =80'