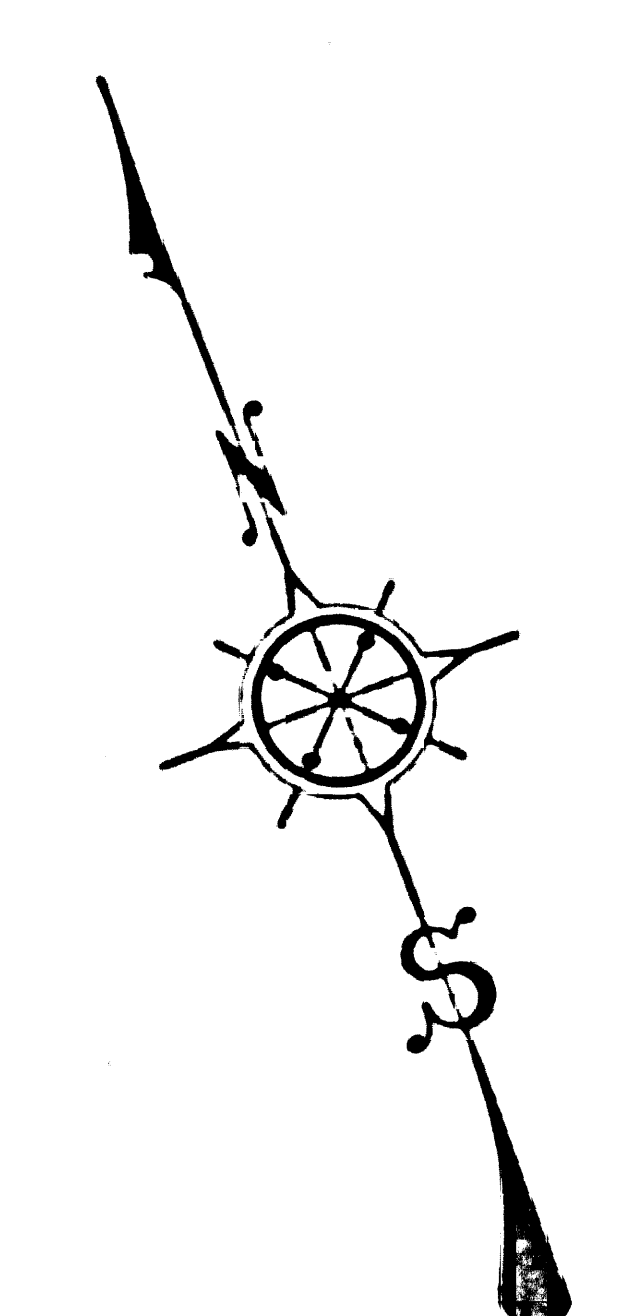
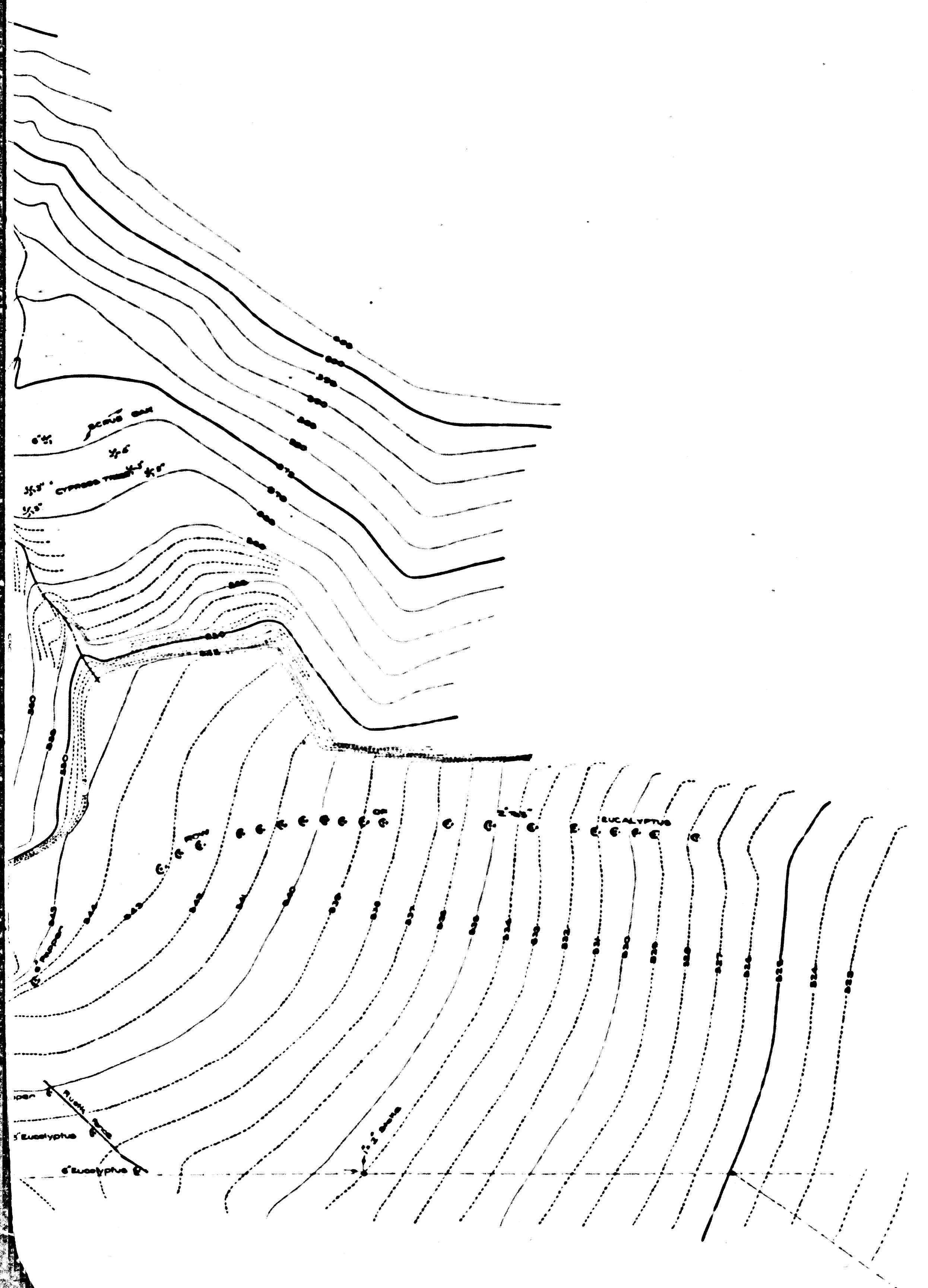


SHEET 1
COUNTY SURVEYOR



TOPOGRAPHIC MAP
OF
HOLLYWOOD BOWL

COUNTY SURVEYORS MAP NO B-1040
SHEET 3 OF 3 SHEETS
SCALE: 1 INCH = 20 FT.

JOB NUMBER 5233
ALFRED JONES-COUNTY SURVEYOR
SURVEYED MARCH 1935 AND MAY 1939
SURVEYED UPON REQUEST OF THE CHIEF MECHANICAL
ENGINEER PER RULE 21, ORDINANCE 929, BY LETTER
DATED AUGUST 3, 1938.
PLANE TABLE SURVEY
FIELD WORK BY.....J. M. WALSH
OFFICE WORK BY.....C. J. TERRY
CHECKED BY.....L. K. FREEMAN

DATUM
ELEVATIONS SHOWN HEREON ARE BASED ON THE
1928 U.S.L.S.G.S. ADJUSTMENT OF U.S.C.S.B.M.
AT HIGHLAND AVE. AND CAMUENGA BLVD. (U.S. 716)

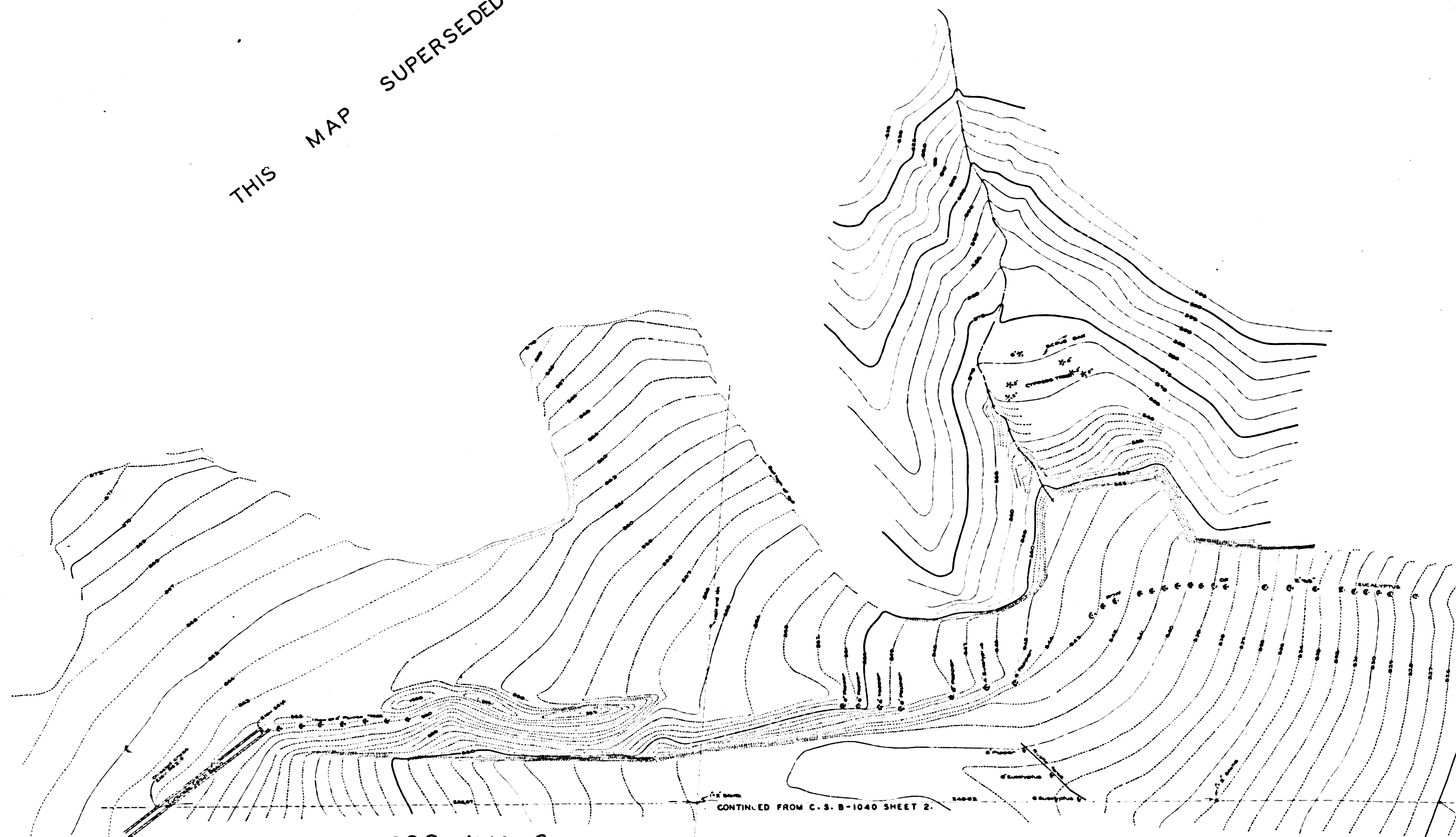
INDEX 40

THIS MAP SUPERSEDED BY C.S. B-1491-SHEETS 2.3&4.

CSB-1040-3
A1 OF A2

COUNTY SURVEYOR
SHEET 1
COUNTY SURVEYOR

THIS MAP SUPERSEDED BY C.S.B-1491.



CONTINUED FROM C.S.B-1040 SHEET 2.

CSB-1040-3
A2 OF A2