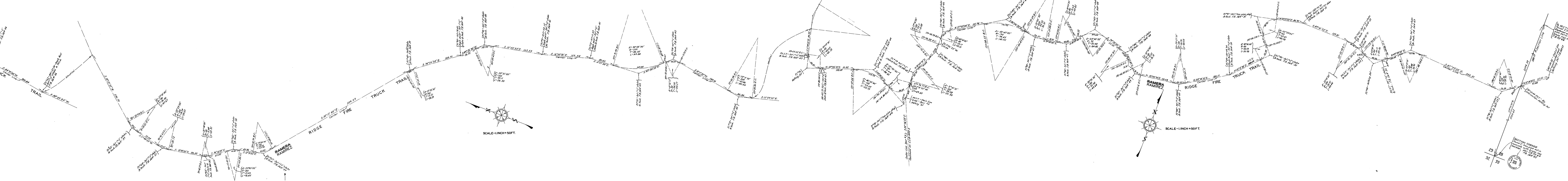
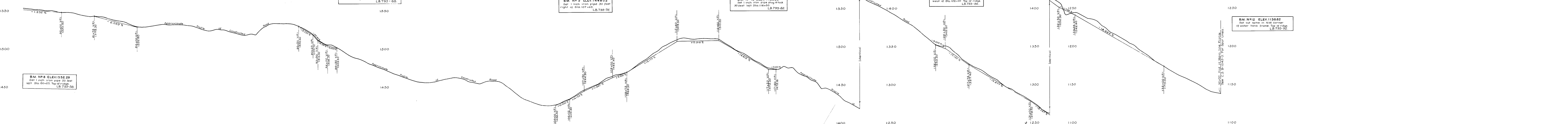


CONTINUED FROM C.S.B-1043-1.

NOTE: Grade over portions of this line was established in the field and follows the approximate ground surface as shown, where most of grade line shows the proposed, the average of construction grades established and staked in the field.



RAMIREZ
RAMERA RIDGE FIRE TRUCK TRAIL
 FROM
 LATIGO CANYON ROAD
 TO
 THE EAST LINE SECTION 29 T.1S.-R.18W. S.B.M.

COUNTY SURVEYORS MAP NO. 1043.
 SHEET NO. 2 OF 3 SHEETS
 SCALE AS SHOWN
 JOB NUMBER 8082.

ALFRED JONES - COUNTY SURVEYOR
 SURVEYED - NOV. 1934 - MAR. 1935.

BEARINGS ARE BASED ON THE BEARING OF
 EAST LINE SECTION 18 T.1S.-R.18W. PER C.S.B-723.

FB. 564-1-62 & L.B. 795-3-125
 FIELD WORK BY... T. J. STEVENSON.
 OFFICE WORK BY... F. A. WOOD.
 CHECKED BY... H. L. MARTIN.
 W. H. BLACKMER.
 A. E. TIMMONS.

FOR INDEX MAP SEE C.S.B-1043-1.

DATUM
 ELEVATIONS SHOWN HEREON ARE
 BASED ON THE 1928 U.S.C. & G.S.
 ADJUSTMENT OF 1953 BM-45 (15253)

REVISION
 (1) Station 120+00 to 141+00
 (2) Profile corrected from 122.12 to 127.1
 per F.B. 564-3-125, July 21, 1953, S.M.

INDEX 49-92