

MAP OF
VALLEY CIRCLE BOULEVARD
 FROM
PLUMMER STREET
 TO
SOUTH LINE OF SECTION 22,
T. 2 N. R. 17 W., S. B. M.

COUNTY SURVEYORS MAP No B-1055.
 SCALE - 1 INCH = 100 FT.

JOB NUMBER 8079.

ALFRED JONES, COUNTY SURVEYOR.
 SURVEYED - MARCH - APRIL, 1935.

SURVEYED UNDER INSTRUCTIONS OF THE
 BOARD OF SUPERVISORS PER ORDER DATED
 FEBRUARY 18, 1935.

BEARINGS ARE BASED ON THE BEARING OF
 THE NORTH LINE OF SECTION 23, T. 2 N. R. 17 W.,
 PER C. S. B-711, SHEET NO 2.

F. B. 572 - 7-37.

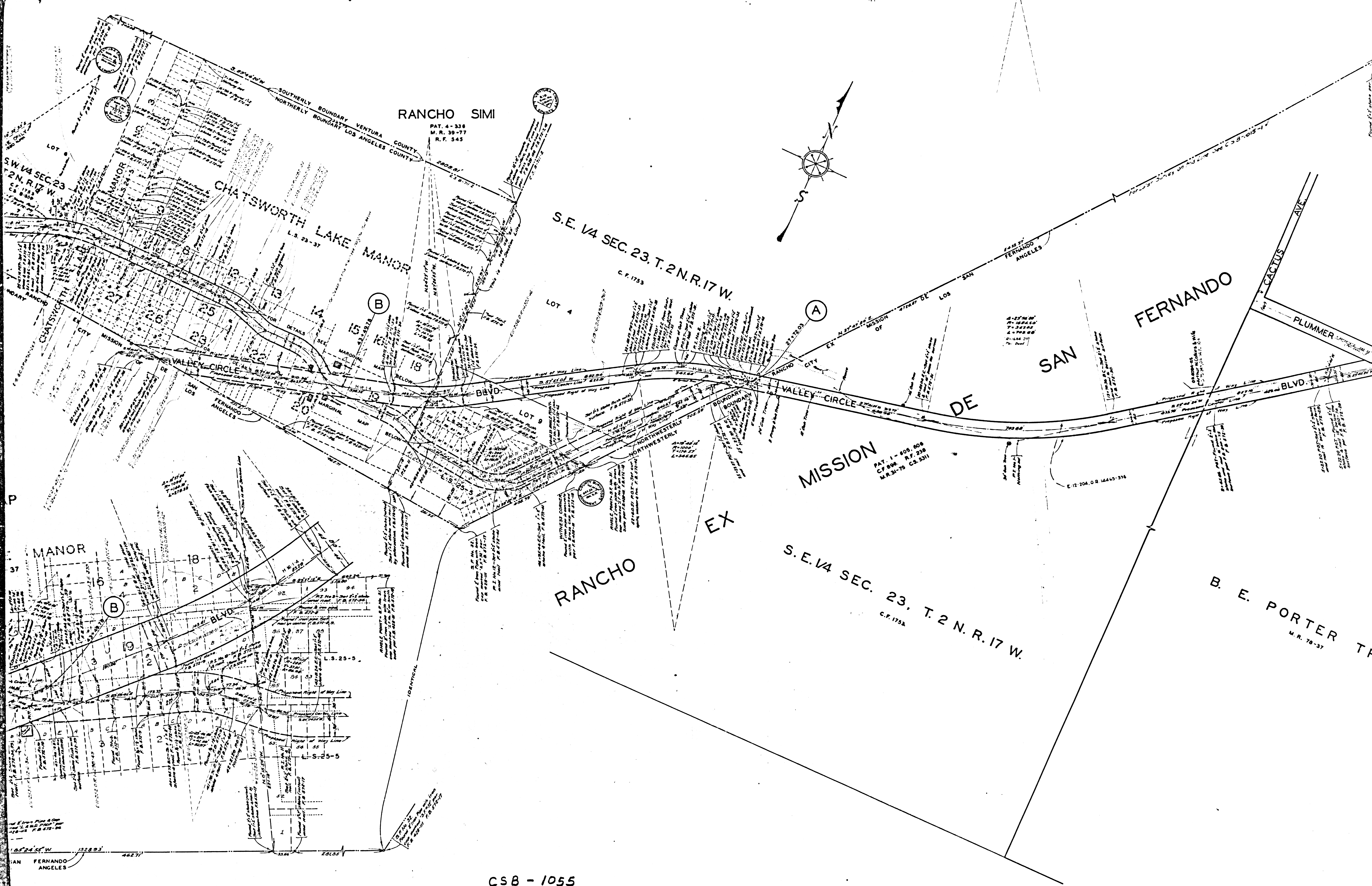
FIELD WORK BY... F. J. McNEAL
 OFFICE WORK BY... J. D. PRICE
 CHECKED BY... A. H. DREW

FOR PROFILES SEE C.S. B-1056-1&2
 FOR CROSS SECTIONS SEE C.S. B-1056-3,4&5

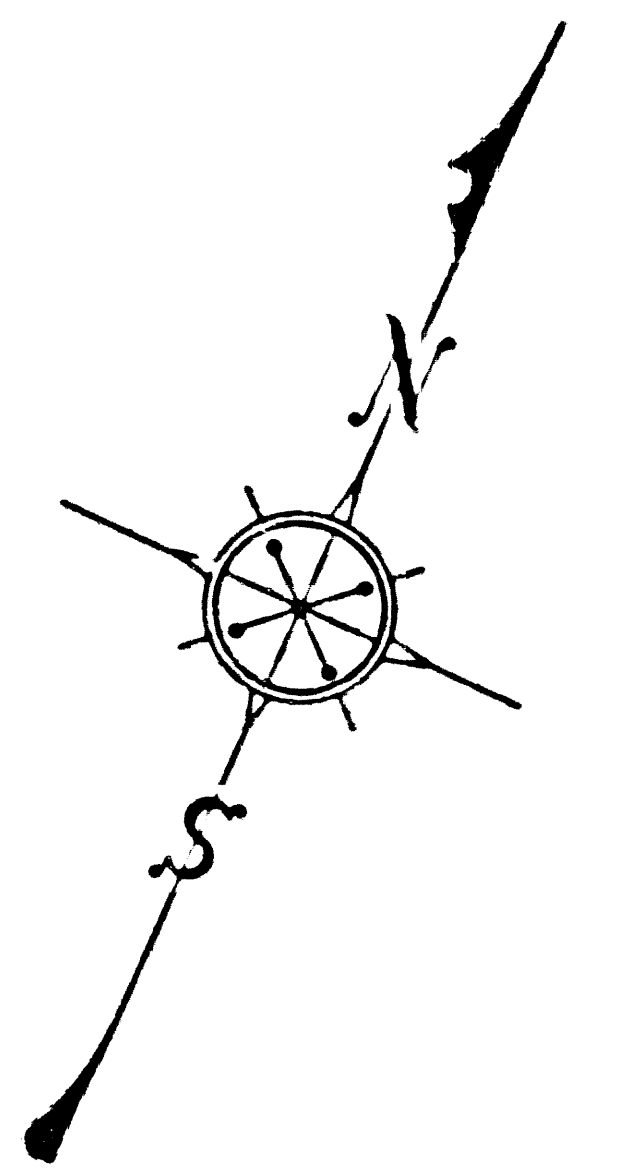
INDEX 61

CSB-1055
 A1 OF A3

FOR BLUE PRINTING.
 WIDTH OF MAP = 36 INCHES.
 AREA / FOOT LENGTH = 3.0 "²
 TOTAL AREA OF MAP = 28 "



RANCHO SIMI
 PAT. 4-338
 M. R. 39-77
 R. F. 545



S.E. 1/4 SEC. 23, T. 2 N. R. 17 W.
 C.F. 1753

MISSION
 PAT. 1-408, 808
 C.F. 896 R.F. 238
 M.R. 31-75 CS 5311

S.E. 1/4 SEC. 23, T. 2 N. R. 17 W.
 C.F. 1752

B. E. PORTER TR.
 M. R. 78-37

