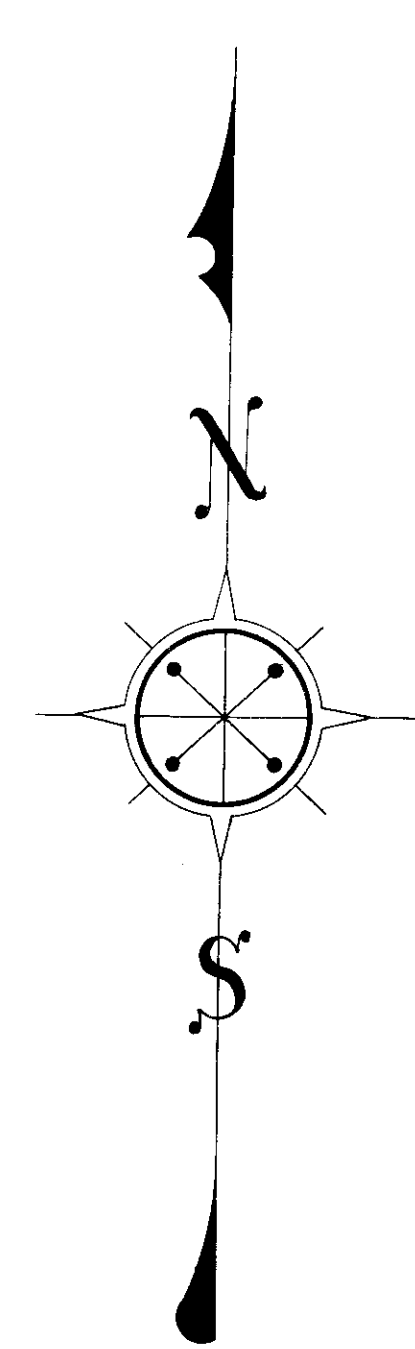
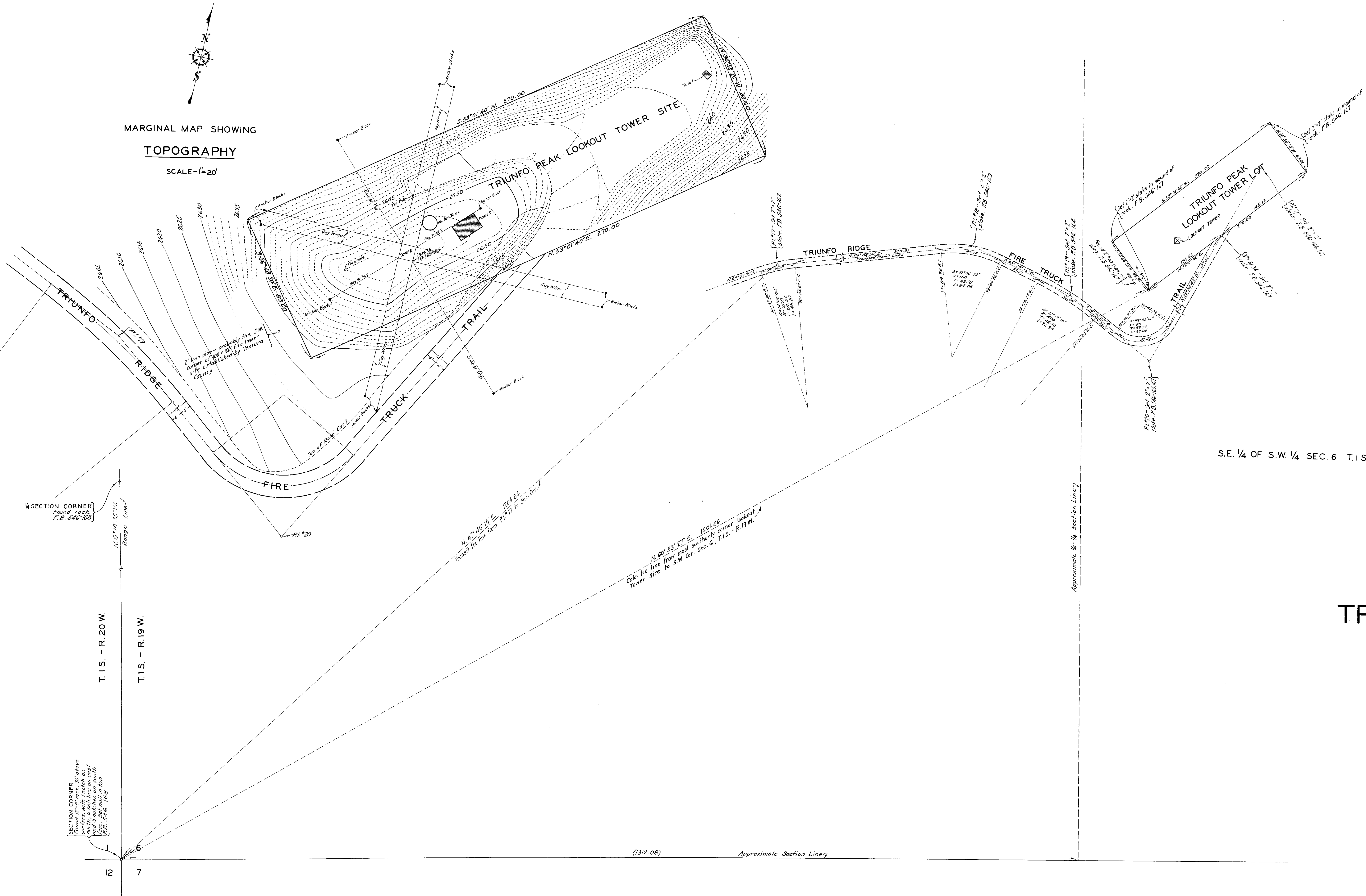


MARGINAL MAP SHOWING  
TOPOGRAPHY  
SCALE - 1" = 20'



S.E. 1/4 OF S.W. 1/4 SEC. 6 T.15.-R.19W.

MAP OF  
L. A. COUNTY FORESTER & FIRE WARDEN  
**TRIUNFO PEAK LOOKOUT TOWER LOT**  
BEING A PORTION OF  
S.E. 1/4 OF S.W. 1/4 SECTION 6 T.15.-R.19W. S.B.M.  
VENTURA COUNTY CALIFORNIA

COUNTY SURVEYORS MAP NO B-1061.  
SCALE - 1 INCH = 50 FT.

JOB NUMBER 8076  
ALFRED JONES - COUNTY SURVEYOR  
SURVEYED - MARCH 1935.

BEARINGS ARE BASED ON A TRUE BEARING OF  
A LINE BETWEEN TRIUNFO TRIANGULATION  
STATION AND SAGE TRIANGULATION STATION  
PER U.S.G.S. TRIANGULATION SYSTEM.

F.B. 546-162-168.  
FIELD WORK BY... R.B. EMMOTT.  
OFFICE WORK BY... F.A. WOOD.  
CHECKED BY... W.H. BLACKMER.

INDEX 19

CSB - 1061  
A2 OF A2

CSB - 1061  
A1 OF A2

FOR BLUE PRINTING  
WIDTH OF MAP = 30 INCHES  
AREA FOOT LENGTH = 2.5' x 9'  
TOTAL AREA OF MAP = 13' x 9'