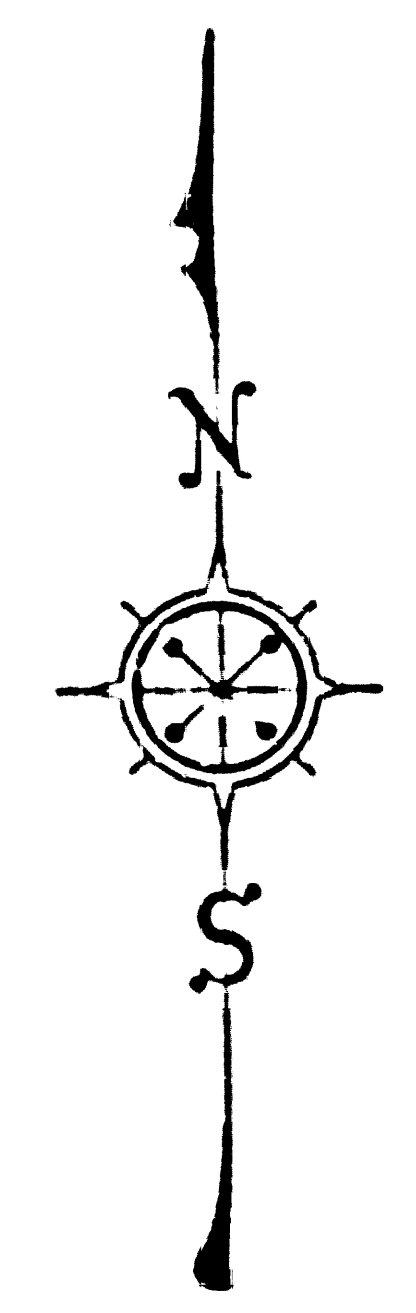


SECTION LINES AND CORNERS  
ESTABLISHED BY THE COUNTY SURVEYOR  
IN  
**T. 7 N.-R. 14 W.-S.B.M.**  
COUNTY SURVEYORS MAP NO B-1073  
SHEET NO 2 OF 2 SHEETS  
SCALE: 1 INCH = 600 FT.



JOB NUMBER 8065

ALFRED JONES-COUNTY SURVEYOR  
SURVEYED- SEPT. 1934, TO SEPT. 1938

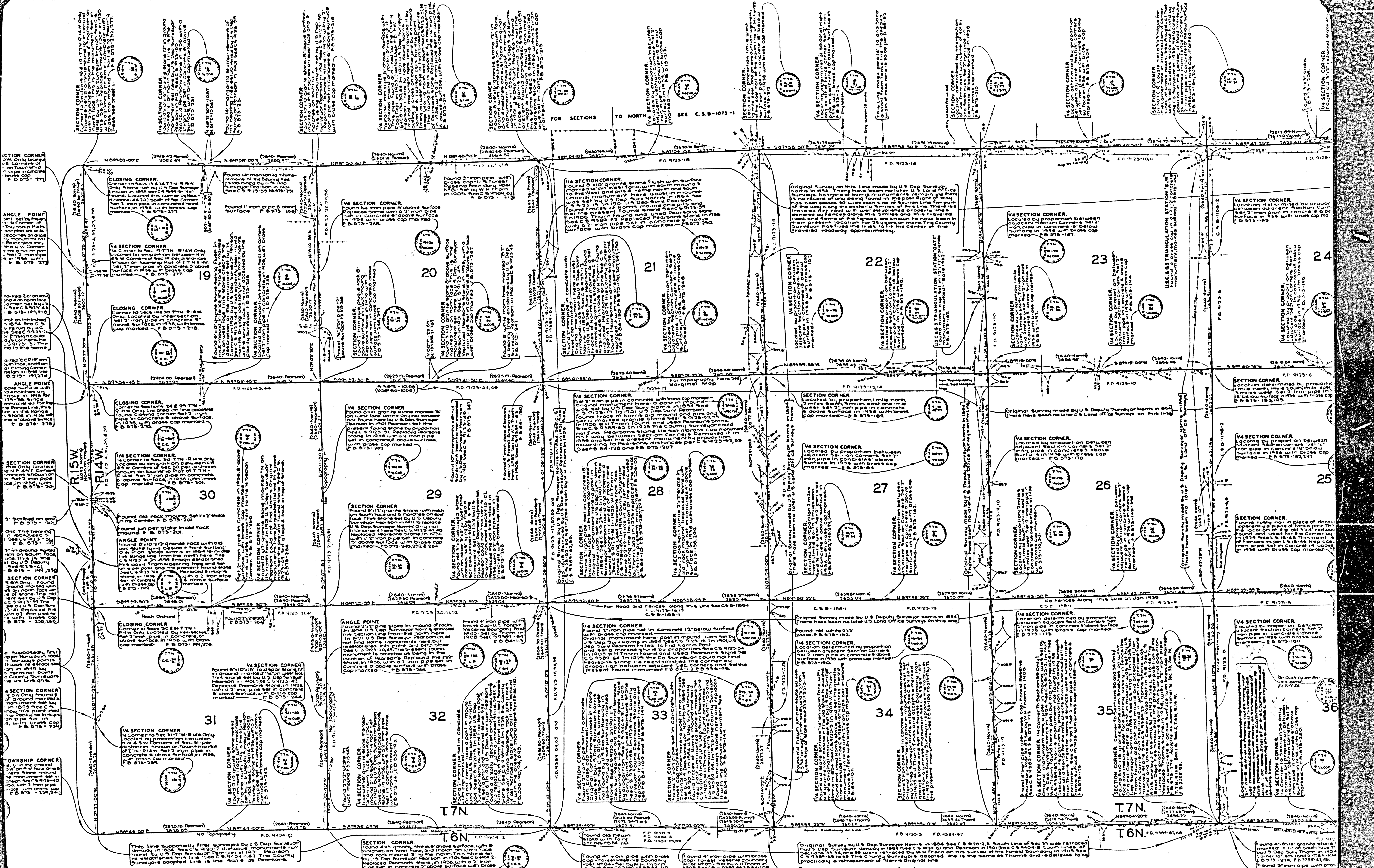
BEARINGS ARE BASED ON TRUE BEARINGS  
AT U.S.C. & G.S. TRIANGULATION STATION  
"SPEIGHT" SEE F. B. 573-208

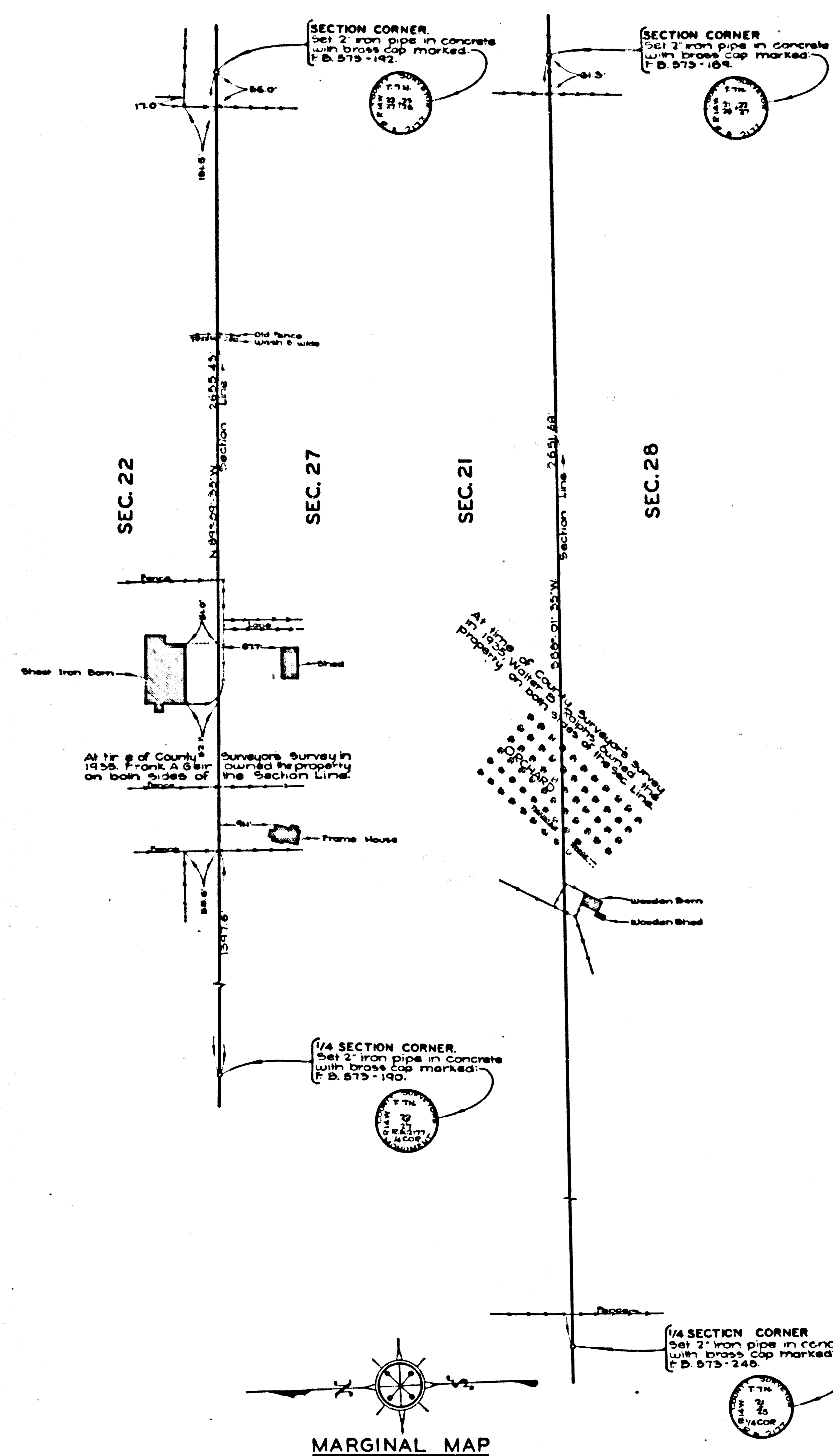
F. B. 573-135 TO 307

FIELD WORK BY E.A. ROSECRANS,  
J.D. BOYER,  
OFFICE WORK BY K.R. M'PHERSON,  
M.R. REYNOLDS,  
CHECKED BY K.R. M'PHERSON.

INDEX 72

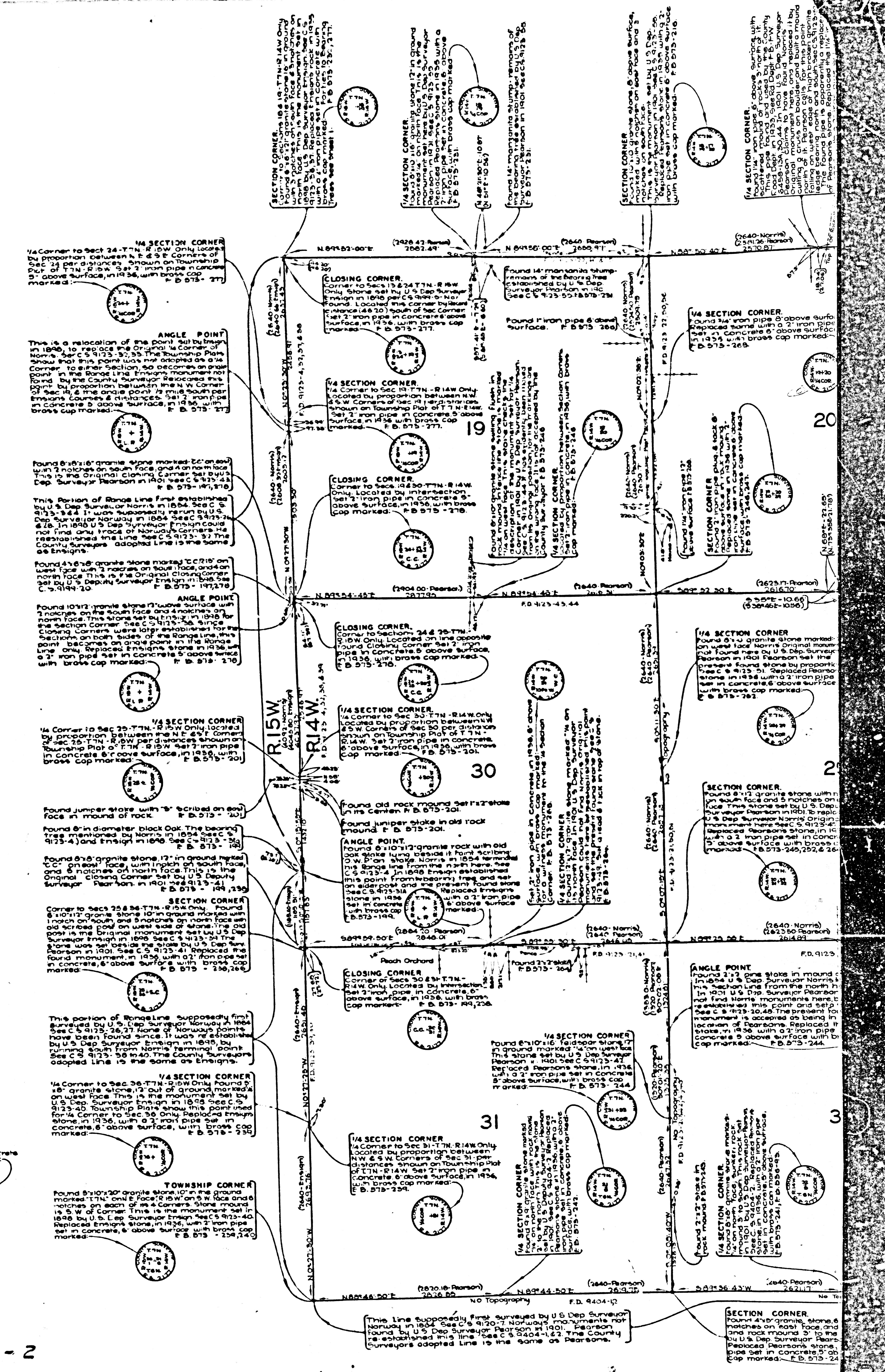
Ground South line at Sec. 35 T. 7 N., R. 14 W., March, 1905 by G. J. T.





MARGINAL MAP  
SCALE - 1 INCH = 100 FT

CSB-1073-2  
A3 OF A3



This Line supposedly first surveyed by U.S. Dep. Surveyor Norway in 1864. See C's 9170-7. Norway's monuments not found. This line is established by U.S. Dep. Surveyor Pearson in 1901. Pearson's monuments are in concrete. This line is the same as Pearson's.