



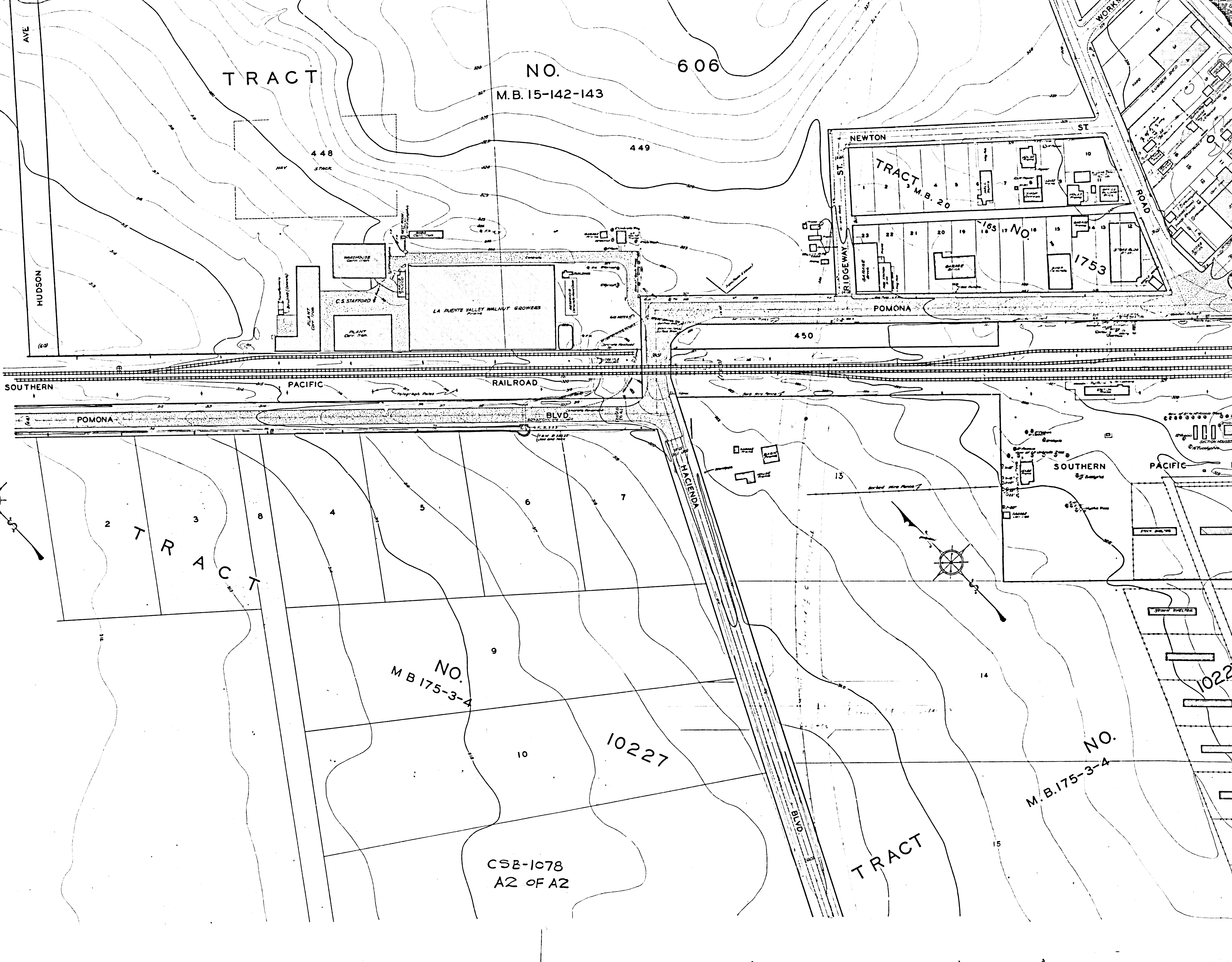
TOPOGRAPHIC MAP OF  
 A PORTION OF THE  
**TOWN OF PUENTE,**  
 LOS ANGELES COUNTY, CALIFORNIA.  
 COUNTY SURVEYORS MAP NO. B-1078  
 SCALE - 1 INCH = 50 FEET.

JOB NUMBER 809.  
 ALFRED JONES, COUNTY SURVEYOR.  
 SURVEYED - MAY - JULY, 1935.  
 SURVEYED UNDER INSTRUCTIONS OF THE  
 BOARD OF SUPERVISORS PER ORDER DATED  
 APRIL 22, 1935.  
 PLANE TABLE SURVEY.  
 FIELD WORK BY ... T.M. WALSH.  
 OFFICE WORK BY ... W.J. LUCAS.  
 CHECKED BY ... A.M. JREW.

NO.  
 B.175-3-4

CSB-1078  
 A1 OF A2

FOR BLUE PRINTING  
 WIDTH OF MAP = 48 INCHES  
 AREA / FOOT LENGTH = 4 1/2  
 TOTAL AREA OF MAP = 37 1/2



TRACT

NO. 606  
M.B. 15-142-143

TRACT M.B. 20

1753

SOUTHERN PACIFIC RAILROAD  
POMONA BLVD

TRACT

NO. M.B. 175-3-4

10227

CSB-1078  
A2 OF A2

NO. M.B. 175-3-4

TRACT

10227