

ARCADIA COUNTY PARK
 MAP OF
ROSS FIELD
 BEING
LOT 4, TRACT NO. 949, M.B. 17-13
 AND
LOTS 3, 4, 5 AND 6 OF TRACT NO. 2409, M.B. 23-23.
 COUNTY SURVEYORS MAP NO. B-1080
 SHEET NO. 1 OF 4 SHEETS.
 SCALE - 1 INCH = 200 FT.
 JOB NUMBER 8100.

ALFRED JONES, COUNTY SURVEYOR.
 SURVEYED - JULY, 1935.
 SURVEYED UNDER INSTRUCTIONS OF THE
 BOARD OF SUPERVISORS PER ORDER DATED
 JULY 2, 1935.
 BEARINGS ARE BASED ON THE BEARING OF
 HUNTINGTON BOULEVARD AS SHOWN ON
 TRACT NO. 2828, M.B. 33-83.
 F. W. 588-31 TO 42.
 FIELD WORK BY R. B. EMMOTT.
 OFFICE WORK BY J. D. PRICE.
 CHECKED BY D. M. FINLEY.

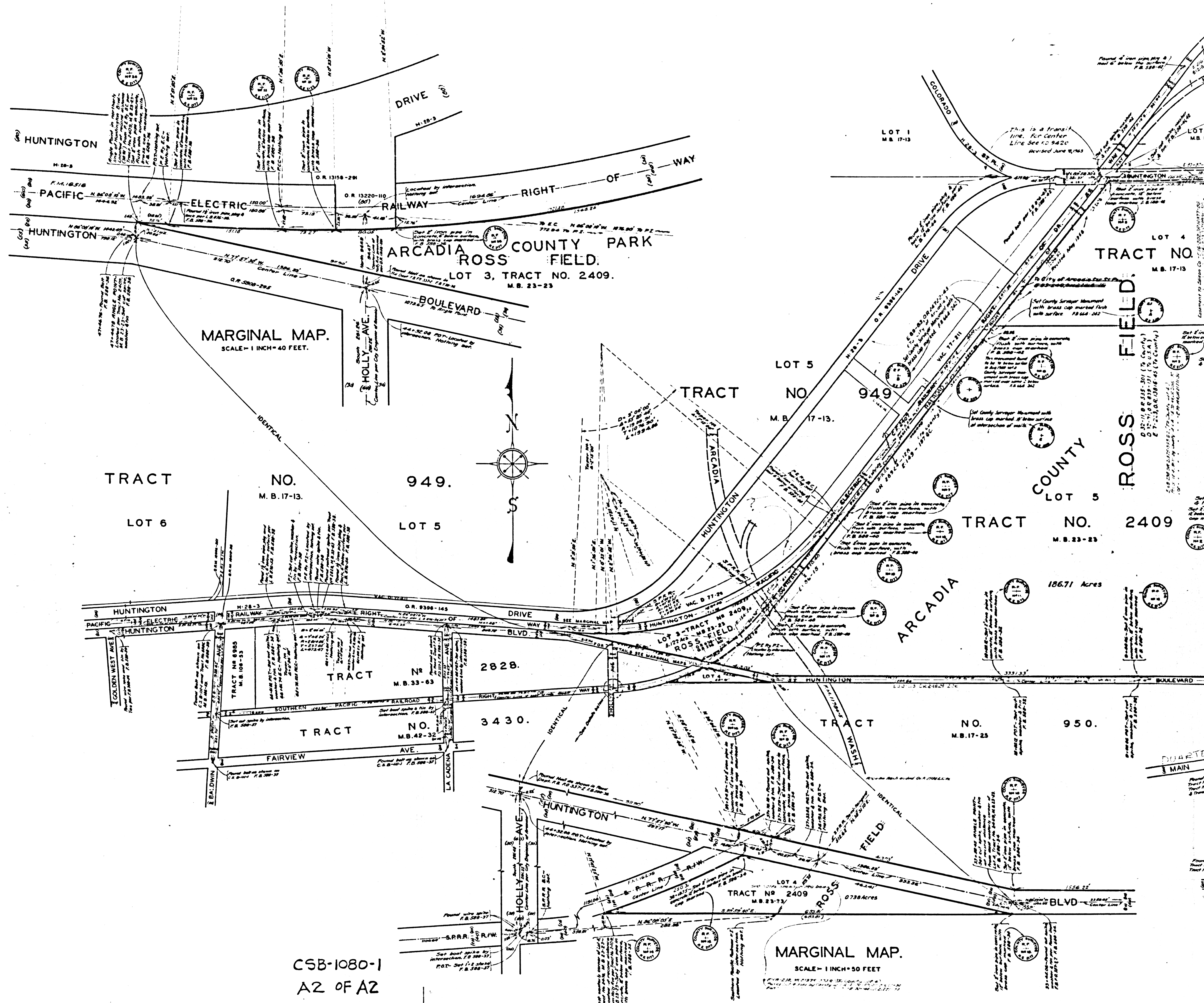
NOTE -
 FOR TOPOGRAPHIC SURVEY SEE C.S. B-1090-2, 3 & 4
 FOR LATER TOPOGRAPHY SEE SURVEY DIVISION
 FILE MAP NUMBER P.T. 180-1, 2, 3

Revised Sept 1949 C.E.B.
 Checked by J.D.P.
 ACTS AND ORDERS
 RECORDED MAY 1938
 RECORDED MAY 1938
 RECORDED MAY 1938

MARGINAL MAP.
 SCALE - 1 INCH = 40 FEET.

CSB-1080-1
 A1 OF A2

FOR BLUE PRINTING.
 WIDTH OF MAP = 36 INCHES.
 AREA / FOOT LENGTH = 3 1/2
 TOTAL AREA OF MAP = 22 1/2



CSB-1080-1
A2 OF A2

MARGINAL MAP.
SCALE = 1 INCH = 50 FEET

186.71 Acres

TRACT NO. 2409
M.B. 23-25
0.738 Acres

TRACT NO. 2409
M.B. 17-15

TRACT NO. 949
M.B. 17-13

TRACT NO. 949
M.B. 17-13

LOT 5

LOT 6

TRACT NO. 2409
M.B. 23-25

TRACT NO. 950
M.B. 17-25

TRACT NO. 2628
M.B. 33-63

TRACT NO. 3430
M.B. 42-32

HUNTINGTON

HUNTINGTON

HUNTINGTON

HUNTINGTON

HUNTINGTON

HUNTINGTON

HUNTINGTON

HUNTINGTON

TRACT NO. 2409
M.B. 23-25

TRACT NO. 2409
M.B. 17-15

TRACT NO. 2409
M.B. 17-15

TRACT NO. 2409
M.B. 17-15

TRACT NO. 2409
M.B. 17-15

TRACT NO. 2409
M.B. 17-15

TRACT NO. 2409
M.B. 17-15

TRACT NO. 2409
M.B. 17-15

TRACT NO. 2409
M.B. 17-15

TRACT NO. 2409
M.B. 17-15

TRACT NO. 2409
M.B. 17-15

TRACT NO. 2409
M.B. 17-15

TRACT NO. 2409
M.B. 17-15

TRACT NO. 2409
M.B. 17-15

TRACT NO. 2409
M.B. 17-15

TRACT NO. 2409
M.B. 17-15

TRACT NO. 2409
M.B. 17-15

TRACT NO. 2409
M.B. 17-15

TRACT NO. 2409
M.B. 17-15

TRACT NO. 2409
M.B. 17-15

TRACT NO. 2409
M.B. 17-15

TRACT NO. 2409
M.B. 17-15

TRACT NO. 2409
M.B. 17-15

TRACT NO. 2409
M.B. 17-15

TRACT NO. 2409
M.B. 17-15

TRACT NO. 2409
M.B. 17-15