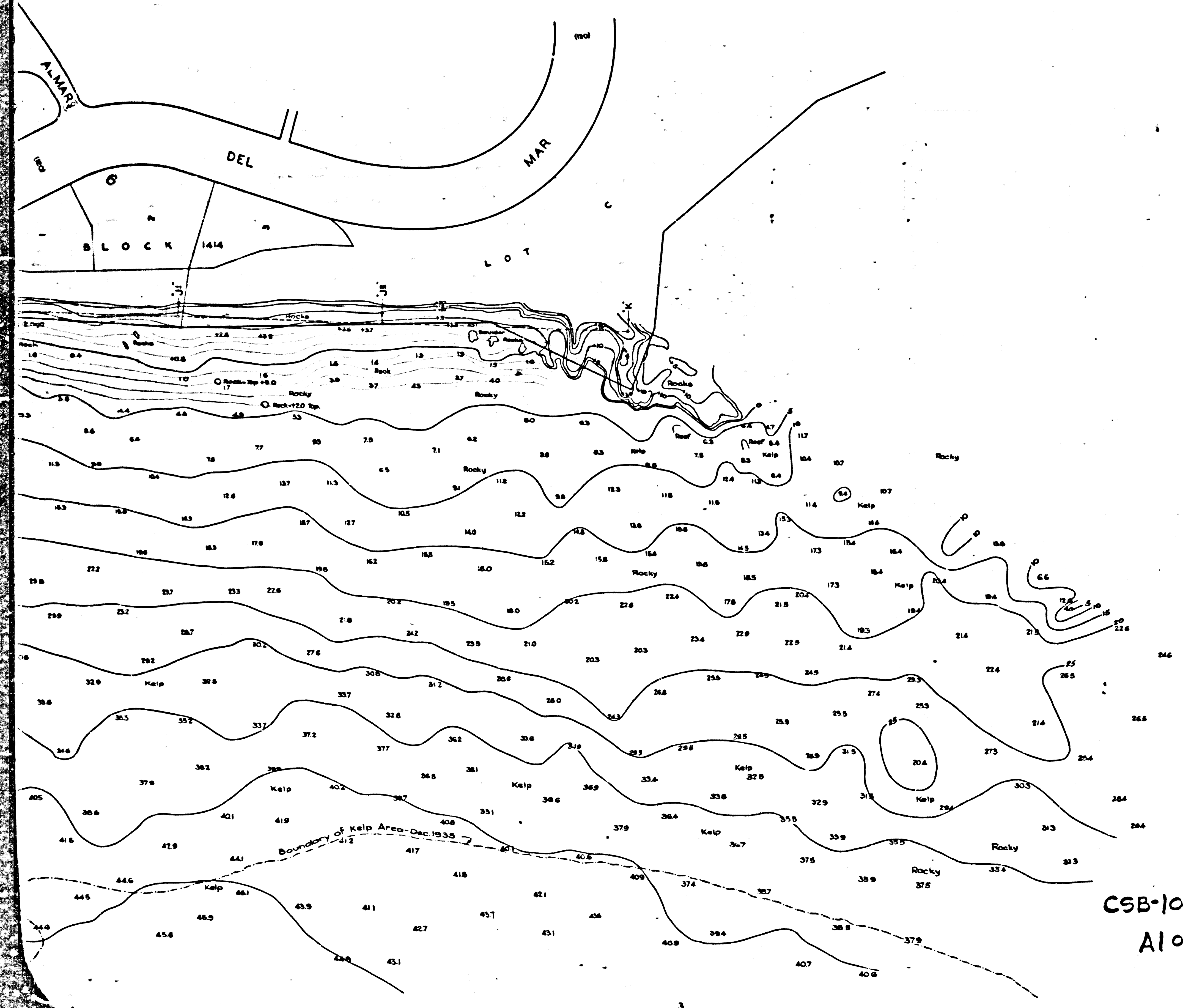


MARGINAL MAP
SHOWING
TYPE OF BOTTOM MATERIAL
ALSO
BOUNDARY OF KELP AREA
SCALE - 1 INCH = 400 FEET



MAP OF
PROPOSED
REDONDO BEACH YACHT HARBOR
AT
MALAGA COVE
LOS ANGELES COUNTY, CALIFORNIA
COUNTY SURVEYORS MAP NO B-1083
SHEET NO 1 OF 7 SHEETS
SCALE - 1 INCH = 100 FT

JOB NUMBER - 6102

ALFRED JONES - COUNTY SURVEYOR
SURVEYED JULY - OCT. 1933.
SURVEYED UNDER INSTRUCTIONS OF THE
BOARD OF SUPERVISORS PER ORDER DATED
JULY 24th 1933
BEARINGS ARE BASED ON THE BEARING OF
SOUTHERLY LINE - CITY OF TORRANCE PER C.S.B-431-H.

F.B. 589 - CONTROL.
F.B.'S 595, 596, 597 - SOUNDINGS.
SHORE TOPOGRAPHY - PLANE TABLE

S. E. BUTLER
FIELD WORK BY . . . T. H. MONCURE
P. T. DUNLAP
OFFICE WORK . . . W. J. LUCAS
CHECKED BY . . . A. A. ROESER.

NOTE -
DATUM IS MEAN LOWER LOW WATER
CONTOURS ARE BELOW DATUM PLANE
UNLESS MARKED WITH PLUS SIGN.

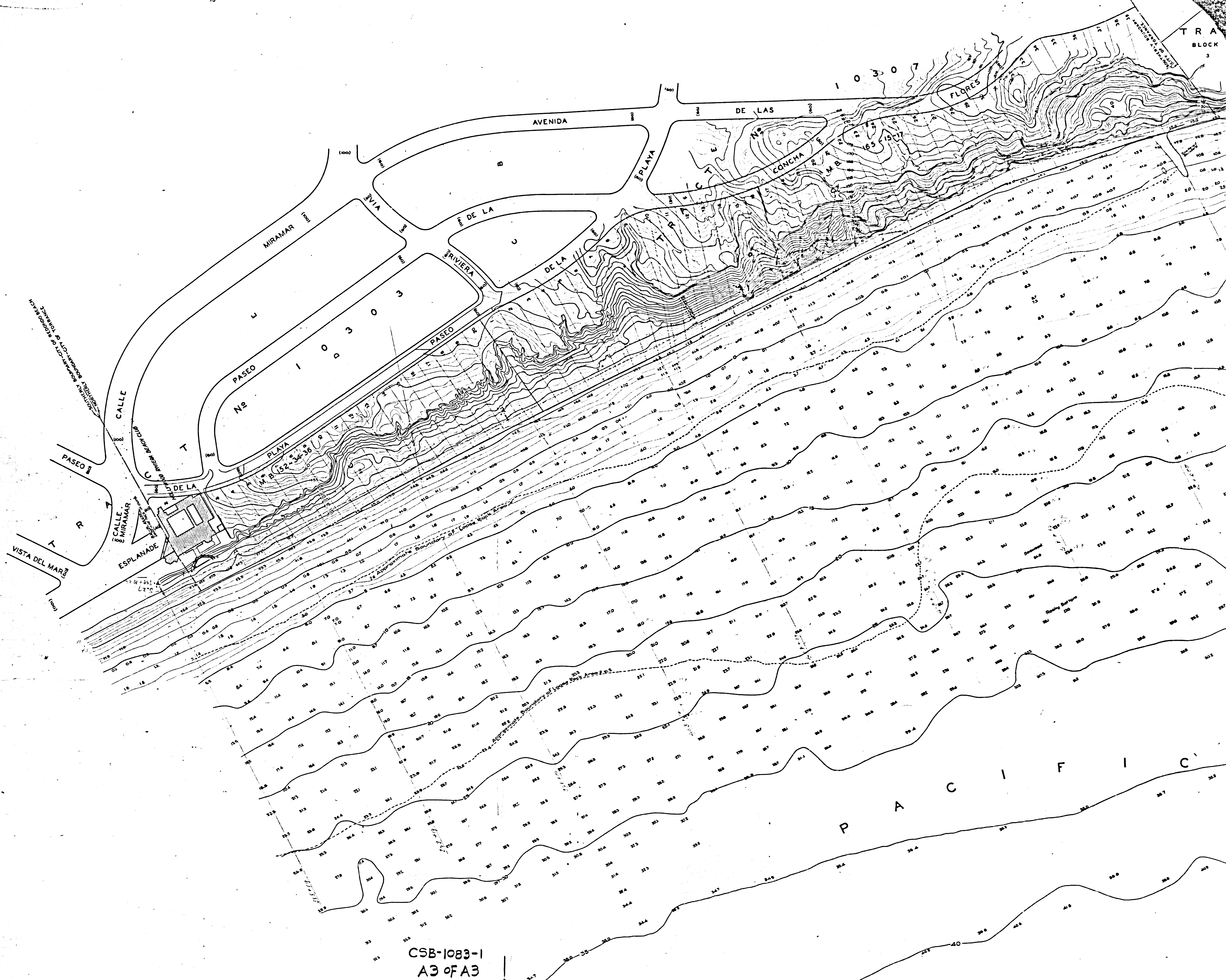
Note: -
For detail on Base Lines
see Marginal Map alone

LEGEND -
S = Sound
L = Loose Rock
* = Point of Bottom Probing

FOR BLUE PRINTING
WIDTH OF MAP = . . . 36 . . . INCHES
AREA / FOOT LENGTH = . . . 3 . . . 8"
TOTAL AREA OF MAP = . . . 35 . . . 8"

CSB-1083-1
A1 of A3

SHEET 1 OF 7 SHEETS



CSB-1083-1
A3 of A3

TRACT No 10624
BLOCK 2
M.B. 163, 7-9
PASEO

VIA ARROYO
ALLEY
DEL
LOT F
MAR
VIA AROMITAS
BLOCK 1500
M.B. 83-77-80
ALLEY
VIA CHINO

VIA MEDIA
ALMARI
PASEO DEL
BLOCK 1414

I F I C
O C M
A N

CSB-1083-1
A2 OF A3

