

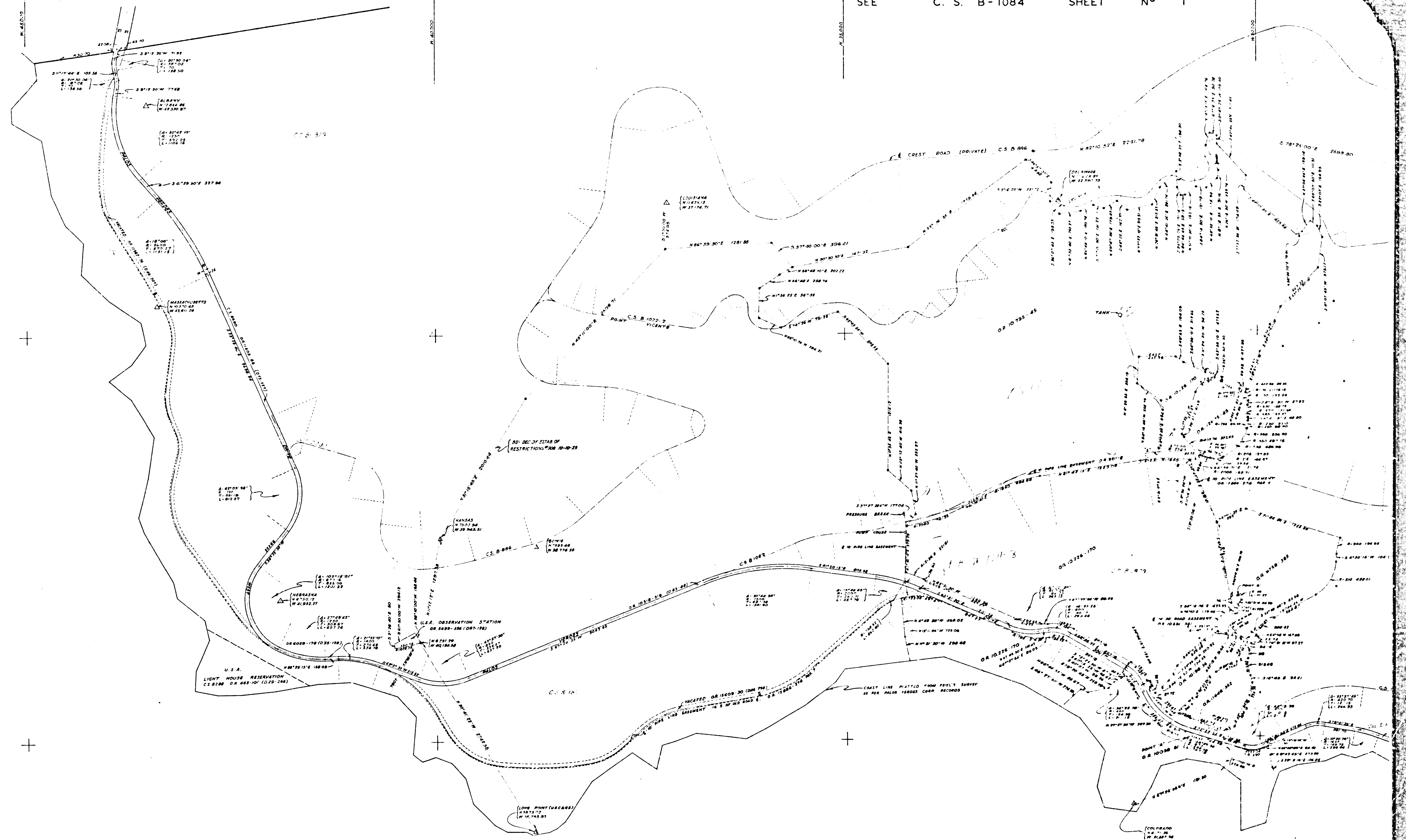
MAP OF  
LOTS H AND J  
OF THE PARTITION OF THE  
RANCHO LOS PALOS VERDES

SUPERIOR COURT CASE NO. 2373 F.M. 15607-1-2  
C.F. 41  
COUNTY SURVEYOR'S MAP NO. B-1084  
SHEET 1 OF 2 SHEETS  
SCALE: 1"=500' OCT. 1935  
ALFRED JONES COUNTY SURVEYOR  
BEARINGS BASED ON COUNTY SURVEYOR'S MAP NO. 5360.  
COMPILED FROM THE RECORDS OF THE PALOS VERDES  
CORPORATION AND THE COUNTY SURVEYOR.  
AXES AND COORDINATE VALUES SHOWN HEREON CORRESPOND  
TO COORDINATE SYSTEM SHOWN ON C.S. 5360

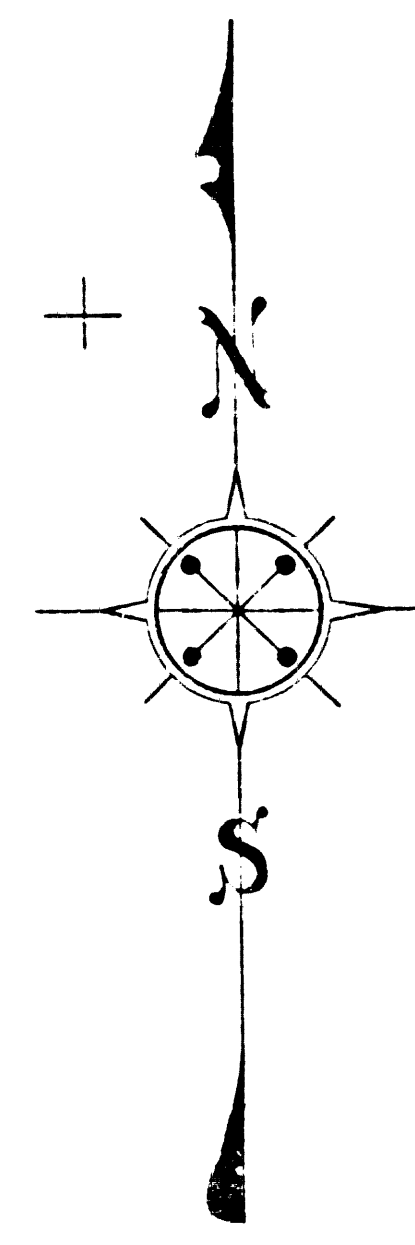
CSB-1084-2  
A1 OF A2

TRACT NO. 3192  
A.W. SEPULVEDA  
TRACT NO. 2074  
TRACT NO. 6861

SEE PLAN FOR THE PARTITION OF THE PALOS VERDES RANCHO



PACIFIC



MAP OF  
 LOTS H AND J  
 OF THE PARTITION OF THE  
 RANCHO LOS PALOS VERDES

SUPERIOR COURT CASE NO. 2373 - F.T.A.  
 C.F. 41  
 COUNTY SURVEYOR'S MAP NO. B-1084  
 SHEET 2 OF 2 SHEETS

SCALE: 1"=500' OCT. 1935

ALFRED JONES COUNTY SURVEYOR  
 BEARINGS BASED ON COUNTY SURVEYOR'S MAP NO. 1  
 COMPILED FROM THE RECORDS OF THE PALOS VERDES  
 CORPORATION AND THE COUNTY SURVEYOR.  
 AXES AND COORDINATE VALUES SHOWN HEREON CORRESPOND  
 TO COORDINATE SYSTEM SHOWN ON C.S. 5360

CSB-1084-2  
 A2 OF A2

SHEET NO. 2 OF 2 SHEETS  
 C.S. B-1084  
 COUNTY SURVEYOR'S MAP NO. B-1084  
 SHEET 2 OF 2 SHEETS