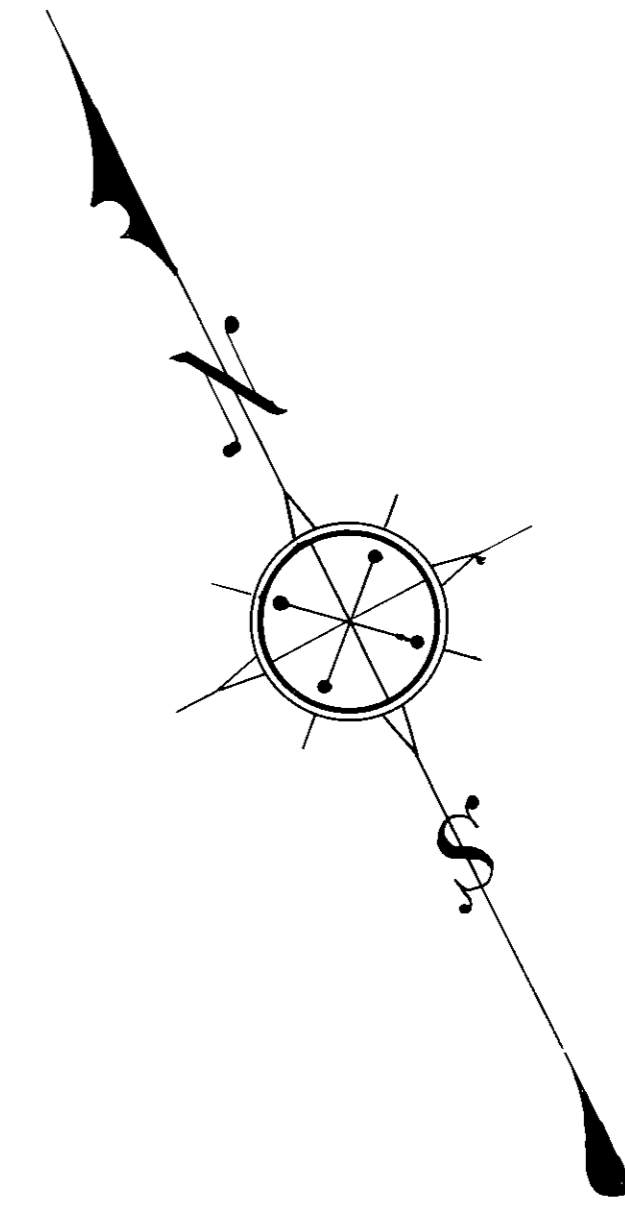
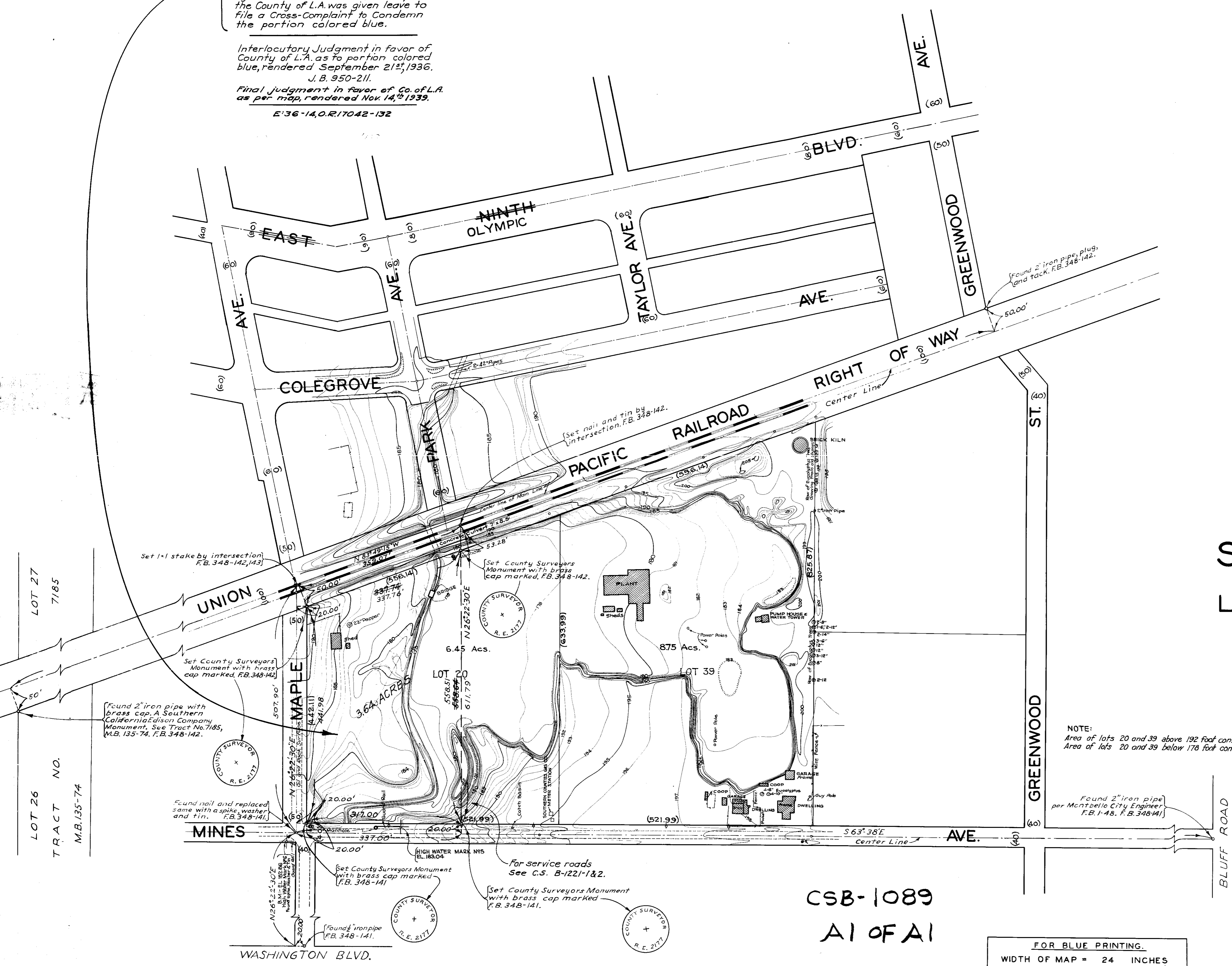


Superior Court Case No. 378585.
 Complaint for Injunction.
 Filed Sept. 25, 1934.
 Simons Brick Company, Pltff.
 vs.
 Drainage District No. 23, et al, Def.
 NOTE:-
 By Order of the Court on Mar. 10, 1936
 the County of L.A. was given leave to
 file a Cross-Complaint to Condemn
 the portion colored blue.

Interlocutory Judgment in favor of
 County of L.A. as to portion colored
 blue, rendered September 21st, 1936.
 J. B. 950-211.

Final judgment in favor of Co. of L.A.
 as per map, rendered Nov. 14th, 1939.
 E:36-140.R/7042-132



TOPOGRAPHIC MAP
 OF
SIMONS BRICK COMPANY PROPERTY
 BEING
LOTS 20 AND 39 EL CARMEL TRACT M.B. 7-134-135
 AT
MAPLE AVE. AND MINES AVE.
 IN
D.D.I. NO. 23

COUNTY SURVEYORS MAP N^o B-1089
 SCALE: 1 INCH = 100 FT.

JOB NUMBER N^o 6523

ALFRED JONES - COUNTY SURVEYOR
 SURVEYED OCTOBER, 1935

PLANE TABLE SURVEY.

FIELD WORK BY... T.M. WALSH
 OFFICE WORK BY... W.J. LUCAS
 CHECKED BY... W.H. BLACKMER

DATUM - U.S.G.S.
 For Bench Levels See L.B. 445-66-67 & L.B. 840-223-224

BEARINGS ARE BASED ON THE BEARING OF MINES
 AVENUE AS SHOWN ON EL CARMEL TRACT-M.B. 7-134-135
 REVISED - FEB. 1950 - W.E.L.

NOTE:
 Area of lots 20 and 39 above 192 foot contour 4.40 Acres. Oct. 22, 1935
 Area of lots 20 and 39 below 170 foot contour 2.79 Acres. Oct. 22, 1935

CSB-1089
 A1 OF A1

FOR BLUE PRINTING.
 WIDTH OF MAP = 24 INCHES
 AREA / FOOT LENGTH = 2 0'
 TOTAL AREA OF MAP = 7.5 0'

LOT 26
 TRACT NO.
 M.B. 135-74

LOT 27
 7185

INDEX 36