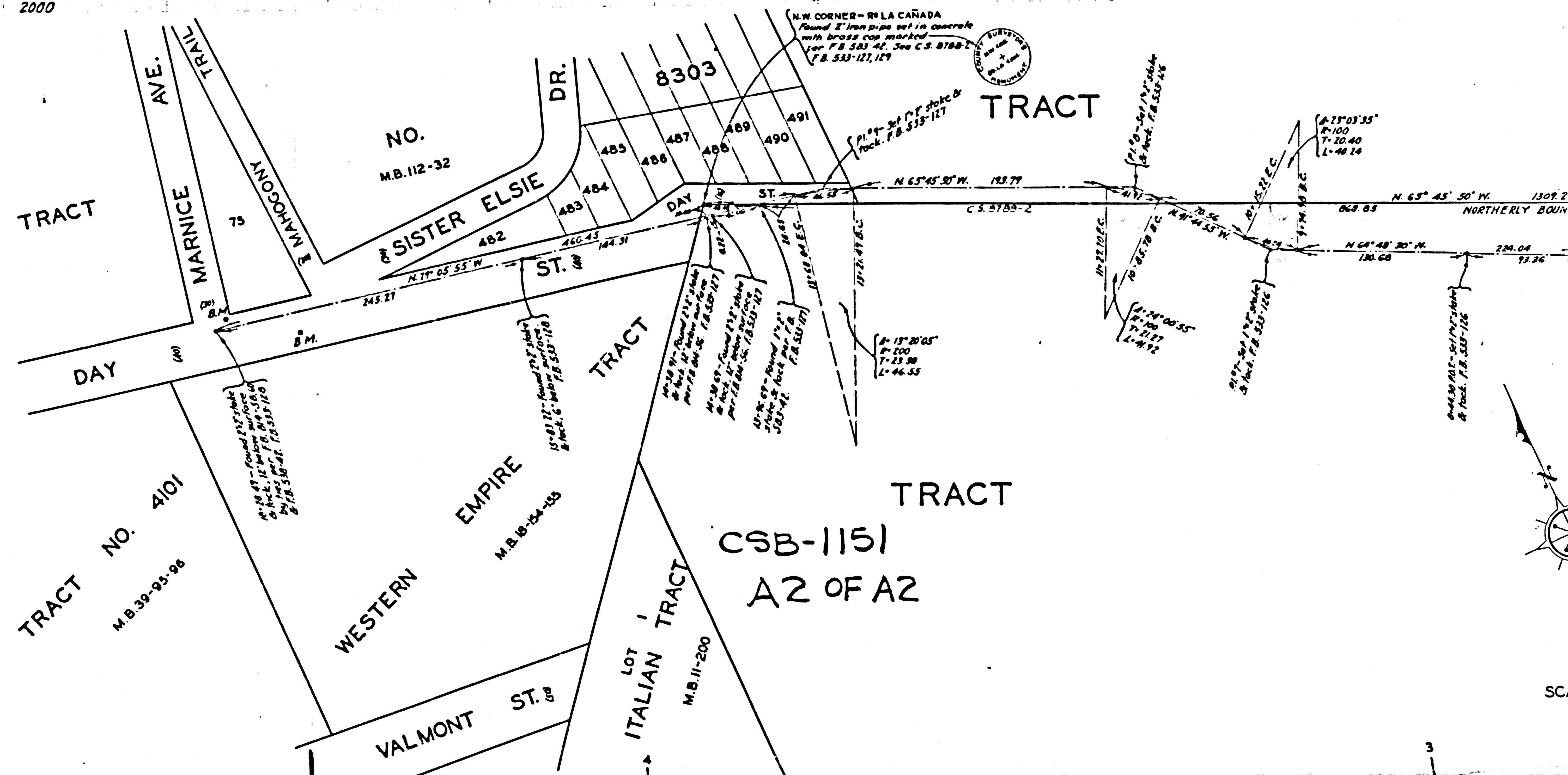
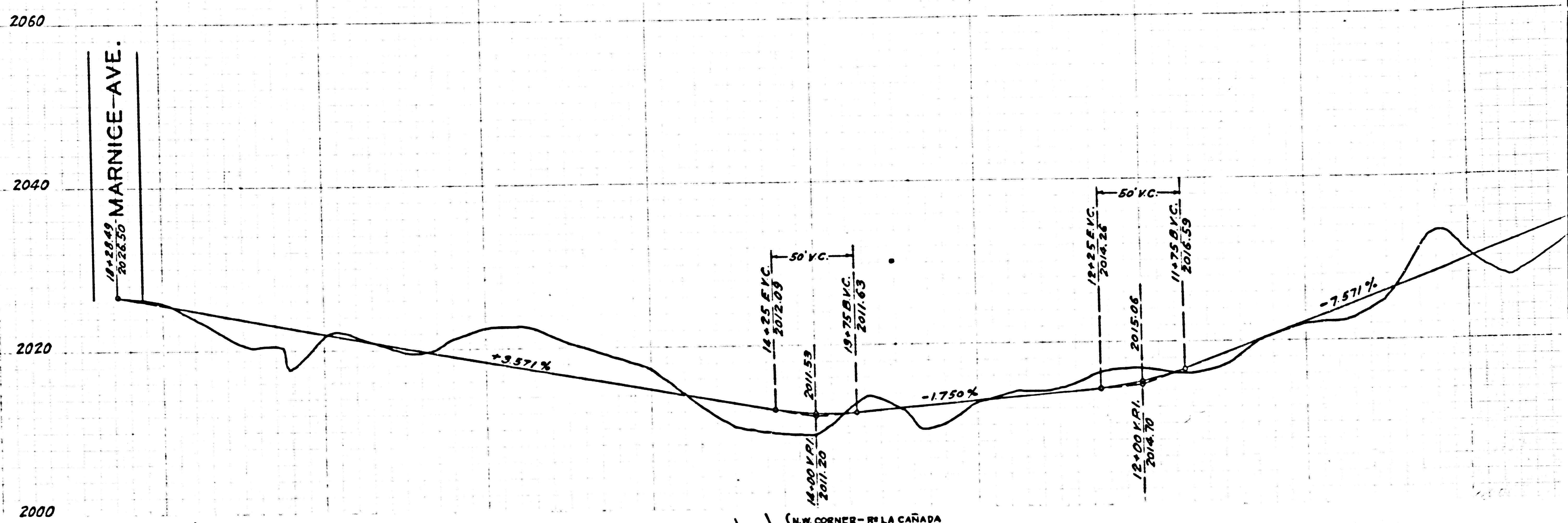


B.M. ELEV. 2027.29
 Boat Spike South side L. A. Co. Forestry Dept.
 Tel. Pole at N.E. Cor. Marnice Ave. and Day St.
 F.B. 533-119

FLOOD CONTROL B.M. ELEV. 2023.23
 Galvanized Spike and Tin in Bench cut in North side
 of 10" Sycamore Tree 16' Left (South) of Sta. 17+63.
 F.B. 533-120-A



SCALE