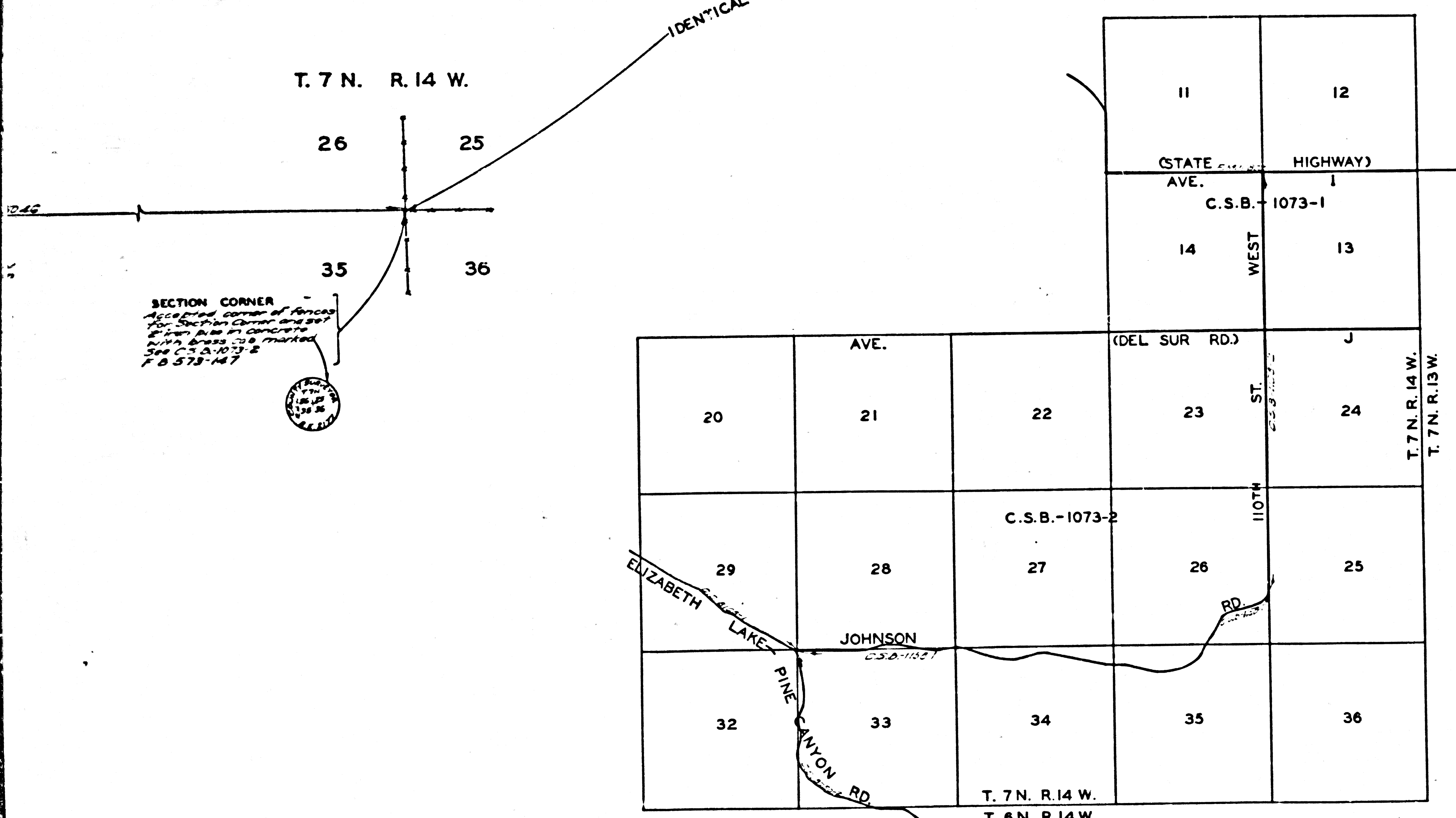
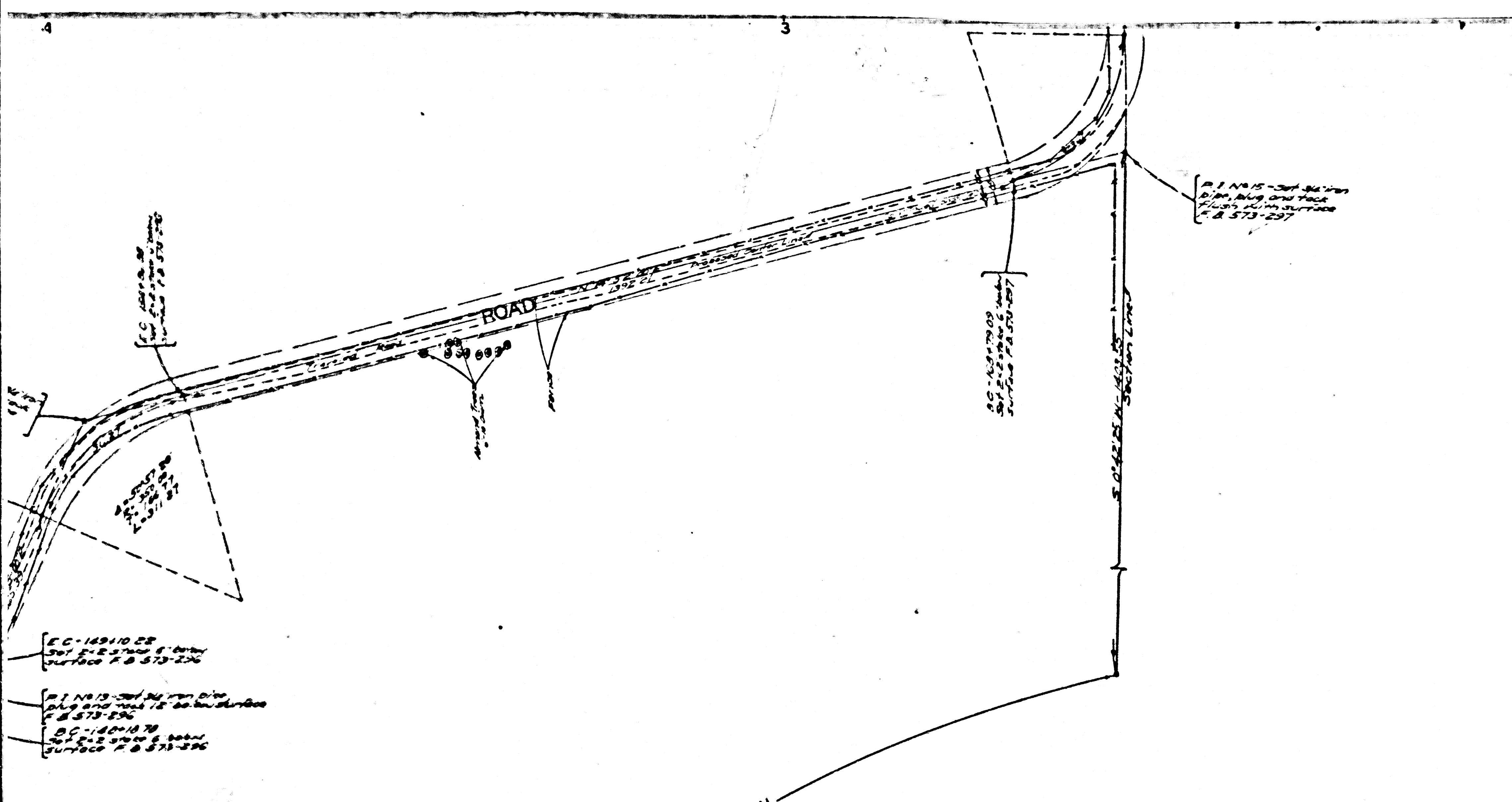


3111-B-1158-1  
SHEET NO. 1 OF 2 SHEETS  
CONTINUED



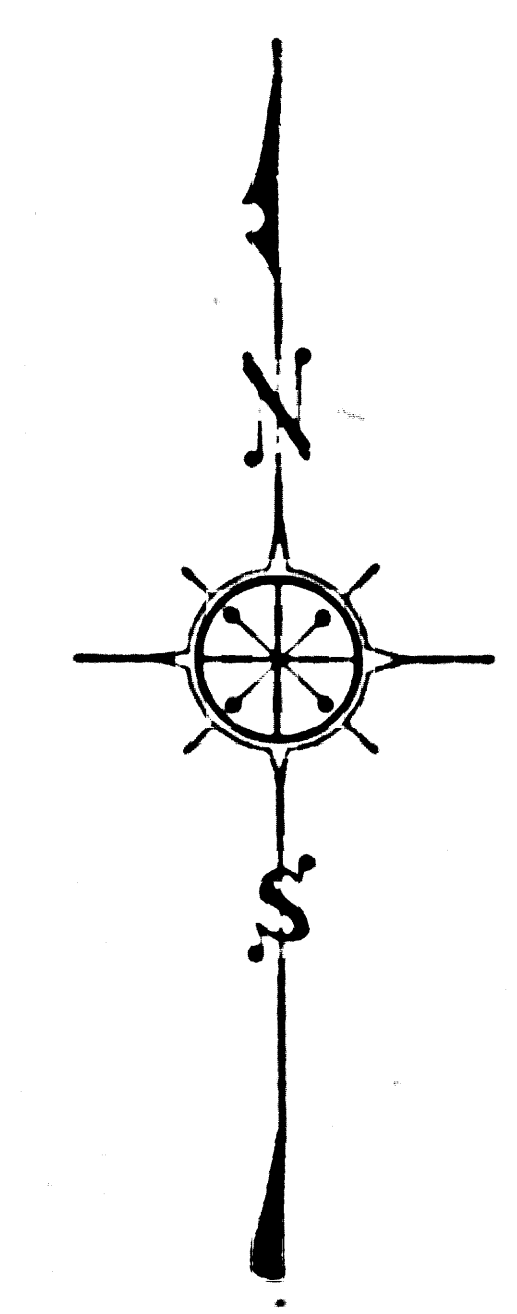
C.S.B. 14510-25  
S.W. 1/4 SECTION 25  
T. 7 N. R. 14 W.  
F. B. 573-226

SECTION CORNER  
Accepted corner of fence  
for Section 25 and 35  
with brass 3/8" marked  
S.W. 1/4 SECTION 25  
T. 7 N. R. 14 W.  
F. B. 573-147

INDEX MAP  
SCALE: 1 INCH = 2000 FT. (APPROX)  
FOR DATA ON SECTION LINES SEE C.S.B.-1073-1,2

FOR BLUE PRINTING  
WIDTH OF MAP = 30 INCHES  
AREA/FOOT LENGTH = 2.5"  
TOTAL AREA OF MAP = 425"

CSB-1158-1  
A1 OF A5



MAP OF  
**JOHNSON ROAD**  
FROM  
ELIZABETH LAKE-PINE CANYON ROAD  
TO  
110TH STREET WEST  
AND  
**110TH STREET WEST**  
FROM  
JOHNSON ROAD  
TO  
AVENUE 1 (STATE HIGHWAY)  
COUNTY SURVEYORS MAP NO. B-1158  
SHEET NO. 1 OF 2 SHEETS  
SCALE: 1 INCH = 100 FT.

INDEX 72

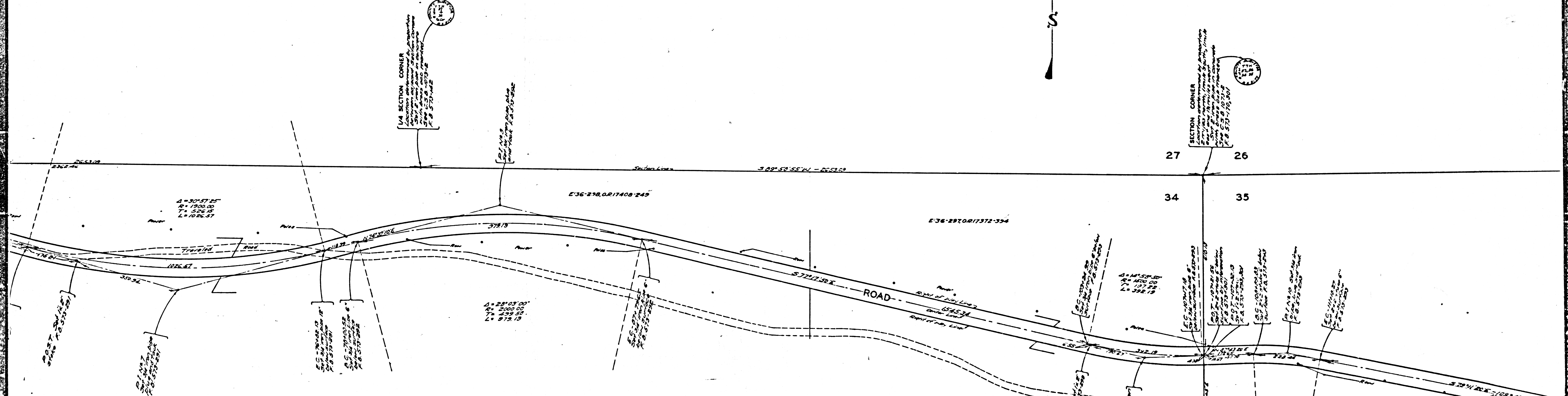
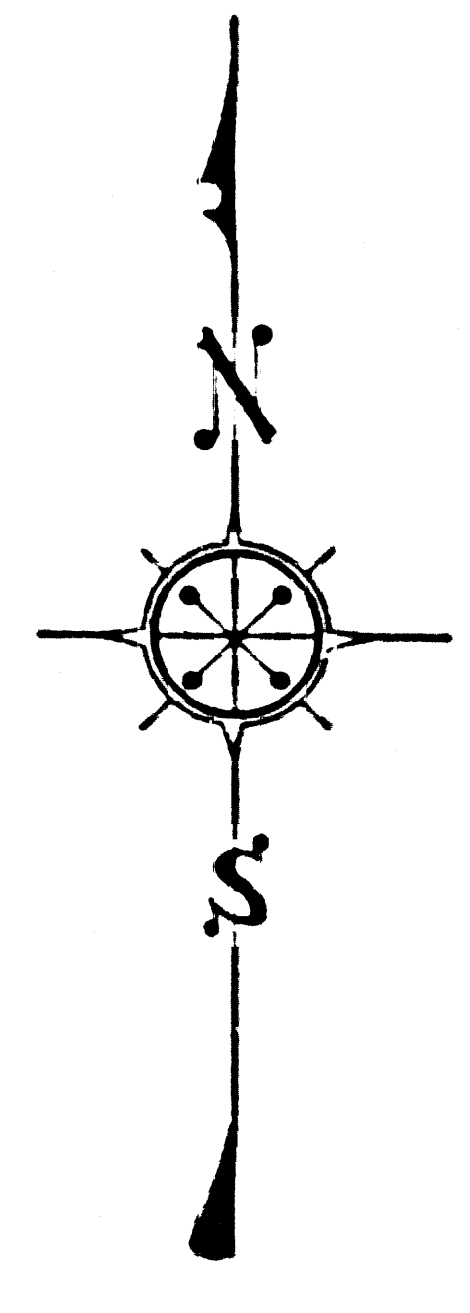
JOB NUMBER 8063  
ALFRED JONES - COUNTY SURVEYOR  
SURVEYED DEC. 1934 - MAR. 1936  
SURVEYED AT VERBAL REQUEST OF  
COUNTY ROAD DEPT. OF DATE OF  
NOV. 28, 1934  
BEARINGS ARE BASED ON THE BEARING OF  
SECTION LINES PER C.S.B.-1073-1,2  
F. B. 573-180-185 & 287-300  
FIELD WORK BY... E. A. ROSECRANS  
K. R. M'PHERSON  
OFFICE WORK BY... C. W. COX  
CHECKED BY... K. R. M'PHERSON

FOR PROFILES SEE C.S.B.-1340  
FOR CROSS SECTIONS SEE C.S.B.-1367

SHEET NO. 1 OF 2 SHEETS  
CONTINUED



10 9 8 7 6

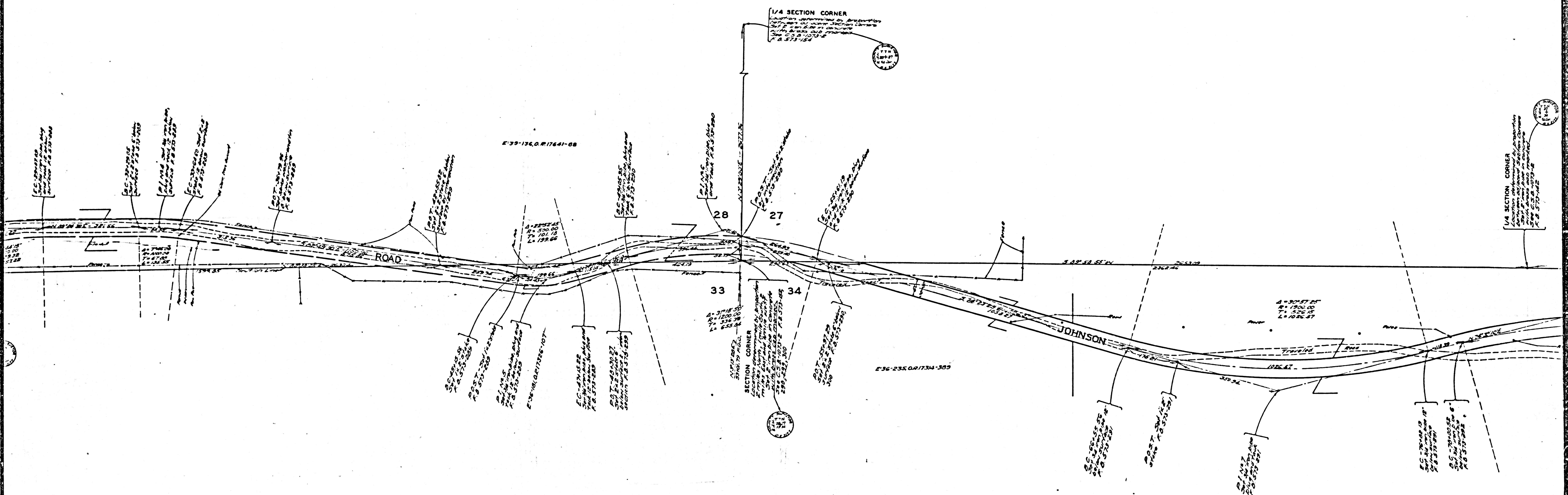


CSB-1158-1  
A 30 F A 5

1/4 SECTION CORNER  
Location determined by comparison  
of corners to recent 3rd class corner  
Set 2 1/4 in 1908 in corner  
with corner 222 marked  
See C.S. - 1073-2  
P. B. 573-172, 301

10 9 8 7 6





E 33-136.0 R 17641-08

1/4 SECTION CORNER  
 Section 28, Township 33N, Range 17E, T33N R17E  
 Section 27, Township 33N, Range 17E, T33N R17E  
 Section 33, Township 33N, Range 17E, T33N R17E  
 Section 34, Township 33N, Range 17E, T33N R17E  
 Section 28, Township 33N, Range 17E, T33N R17E  
 Section 27, Township 33N, Range 17E, T33N R17E  
 Section 33, Township 33N, Range 17E, T33N R17E  
 Section 34, Township 33N, Range 17E, T33N R17E

1/4 SECTION CORNER  
 Section 28, Township 33N, Range 17E, T33N R17E  
 Section 27, Township 33N, Range 17E, T33N R17E  
 Section 33, Township 33N, Range 17E, T33N R17E  
 Section 34, Township 33N, Range 17E, T33N R17E

SECTION CORNER  
 Section 28, Township 33N, Range 17E, T33N R17E  
 Section 27, Township 33N, Range 17E, T33N R17E  
 Section 33, Township 33N, Range 17E, T33N R17E  
 Section 34, Township 33N, Range 17E, T33N R17E

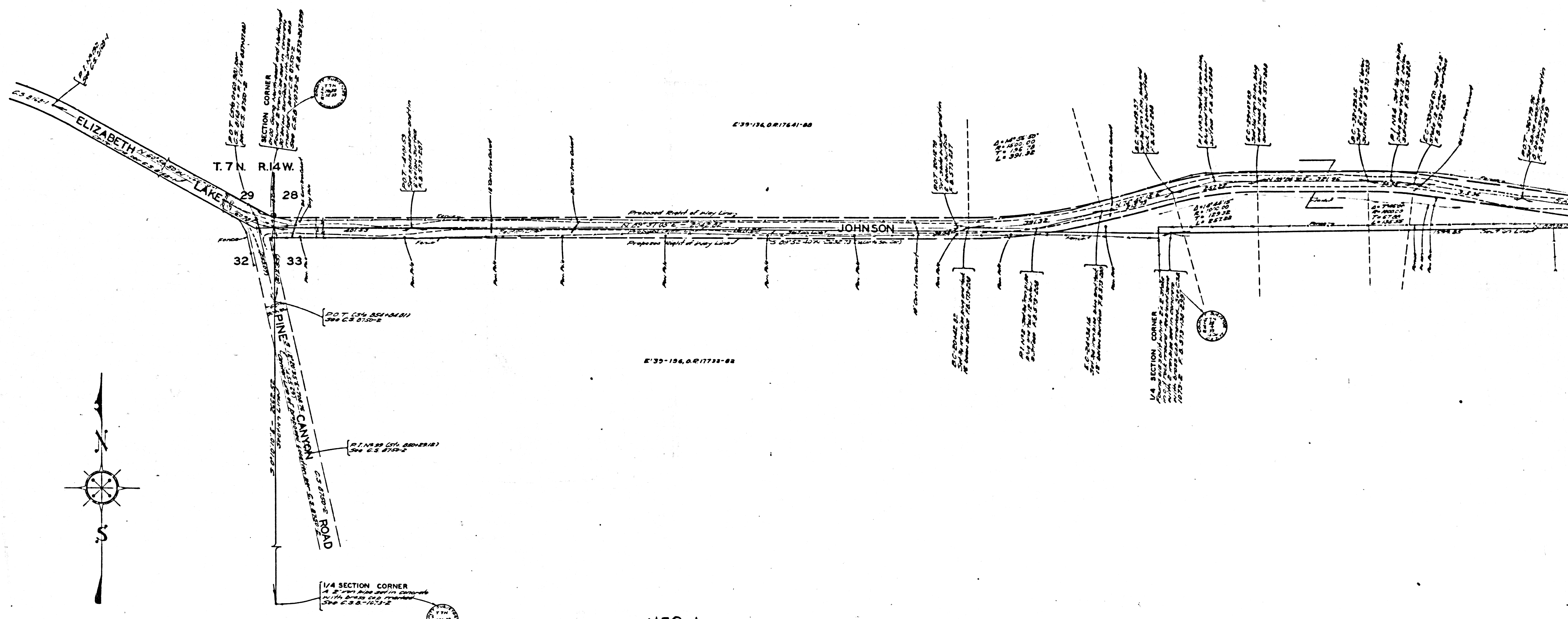
E 36-235.0 R 1734-389

CSB-1158-1  
A 4 OF A 5



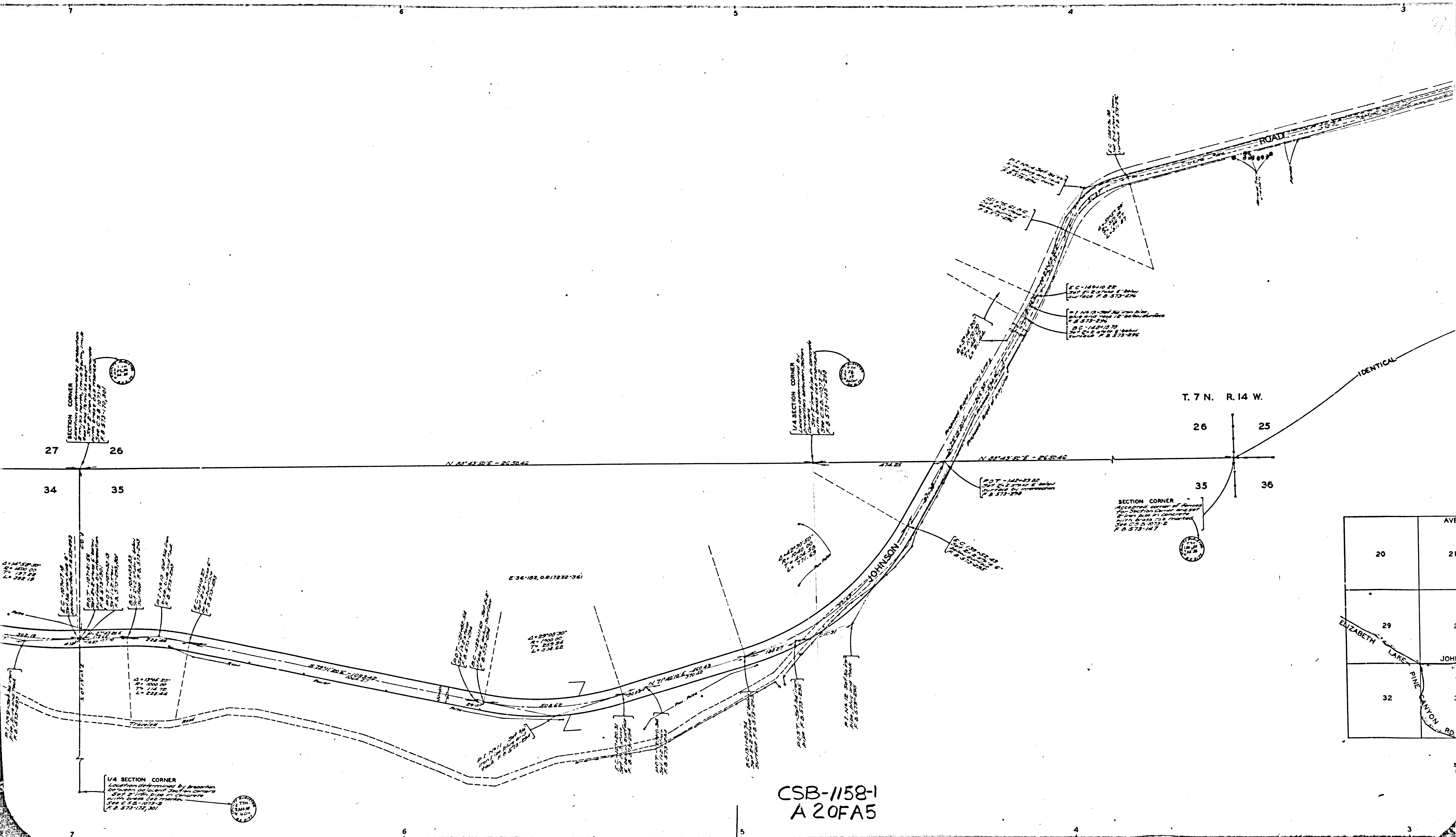
SHEET 141 OF 5 SHEETS  
CONVALL SURVEYORS MAP N.B.B.-118

SHEET 141 OF 5 SHEETS  
CONVALL SURVEYORS MAP N.B.B.-118



CSB-1158-1  
A50FA5





SECTION CORNER  
 Location determined by American  
 location of Section Corners  
 with brass cap marks  
 See C.S.A. 1073-2  
 F.B. 573-175, 301

1/4 SECTION CORNER  
 Location determined by American  
 location of Section Corners  
 with brass cap marks  
 See C.S.A. 1073-2  
 F.B. 573-175, 301

SECTION CORNER  
 Accurate location of Section  
 Corners determined by American  
 location of Section Corners  
 with brass cap marks  
 See C.S.A. 1073-2  
 F.B. 573-147

1/4 SECTION CORNER  
 Location determined by American  
 location of Section Corners  
 with brass cap marks  
 See C.S.A. 1073-2  
 F.B. 573-175, 301

CSB-1158-1  
 A 20FA5

20	21
29	28
32	33

ELIZABETH LAKE JOHN  
 PINE CANYON RD

T. 7 N. R. 14 W.