

MAP OF
JOHNSON ROAD
 FROM
 ELIZABETH LAKE-PINE CANYON ROAD
 TO
 110TH STREET WEST
 AND
 110TH STREET WEST
 FROM
 JOHNSON ROAD
 TO
 AVENUE I (STATE HIGHWAY)
 COUNTY SURVEYORS MAP NO B-1158
 SHEET NO 2 OF 2 SHEETS
 SCALE: 1 INCH = 100 FT.

JOB NUMBER 0065

ALFRED JONES - COUNTY SURVEYOR
 SURVEYED - DEC. 1934 - MAR. 1936

SURVEYED AT VERBAL REQUEST OF
 COUNTY ROAD DEPT. OF DATE OF
 NOV. 28, 1934
 BEARINGS ARE BASED ON THE BEARING OF
 SECTION LINES PER. C.S.B.-1073-1, 2
 F. S. 573-180-185 & 287-300

FIELD WORK BY... E. A. ROSECRANS
 OFFICE WORK BY... K. R. M^{PH}ERSON
 C. W. COX
 CHECKED BY... K. R. M^{PH}ERSON

FOR PROFILES SEE C.S.B-1340
 FOR CROSS SECTIONS SEE C.S.B-1367
 "FOR LATER SURVEY" note added March 1971-B.G.

INDEX 72

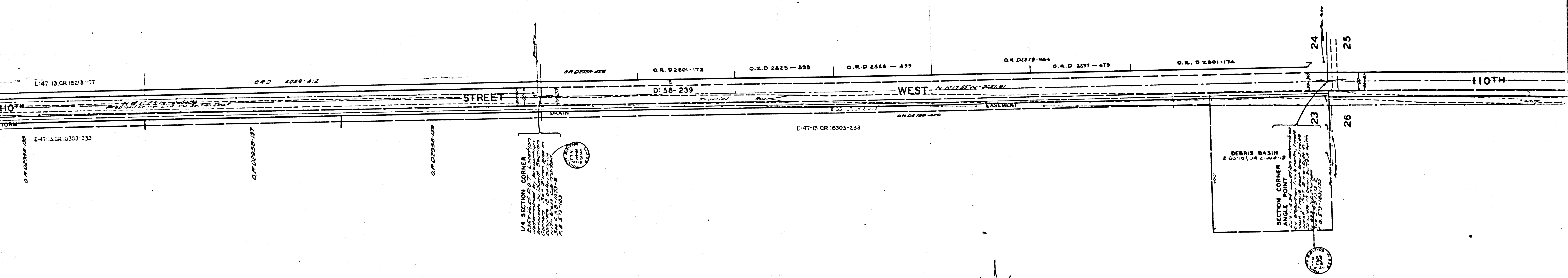
CSB-1158-2
 A1 OF A5

FOR BLUE PRINTING
 WIDTH OF MAP = 30 INCHES
 AREA/FOOT LENGTH = 2.5"
 TOTAL AREA OF MAP = 40"

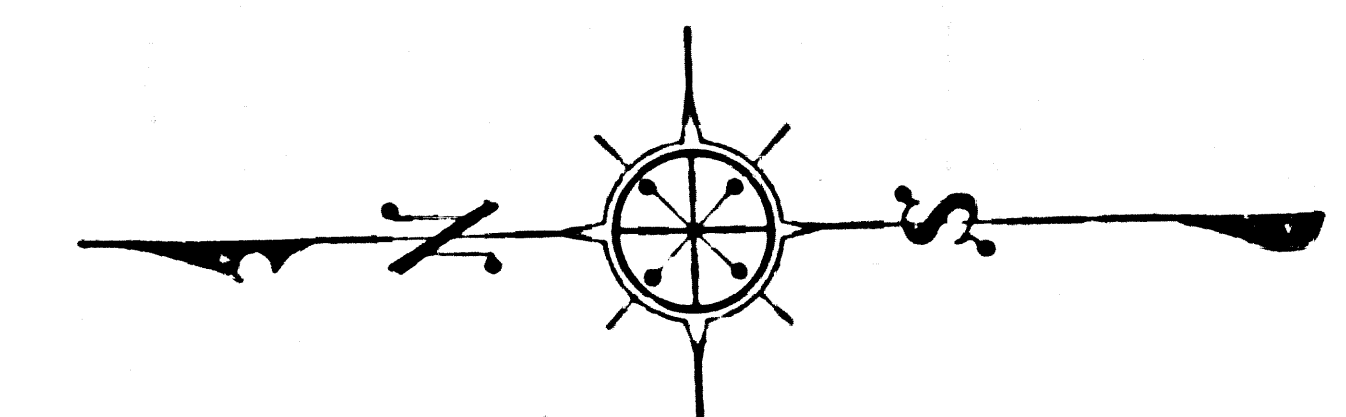
SHEET NO 2 OF 2 SHEETS
 COUNTY SURVEYORS MAP NO B-1158

CONILLA SURVEYOR

10 9 8 7



295 FOR LATER SURVEY



CSB-1158-2
A30FA5

10 9 8 7

13

12

11

10

1 2 3 4 5 6 7 8

TRACT

ACQUEDUCT

M.B. 13-60

O.R. 24038-977

13 AVENUE WEST

24

O.R. 4029-414

E 47-13 OR 18213-177

O.R. 4089-422

STREET

STORM

DRAIN

EASEMENT

STORM

110'

E 47-13 OR 18213-177

O.R. 4089-422

O.R. 4089-422

1/4 SECTION CORNER
This corner was established by the original survey of the Section 14 of Township 35 North, Range 13 East, 3rd P.M. and is the intersection of the Section Line and the Section Line.

O.R.D. 2618 - 499
O.R.D. 2618 - 497

SECTION CORNER
ANGLE POINT
This point was established by the original survey of the Section 14 of Township 35 North, Range 13 East, 3rd P.M. and is the intersection of the Section Line and the Section Line.

SURVEY

SEE

C.S.B-5295

CSB-1158-2
A 4 OF A 5

13

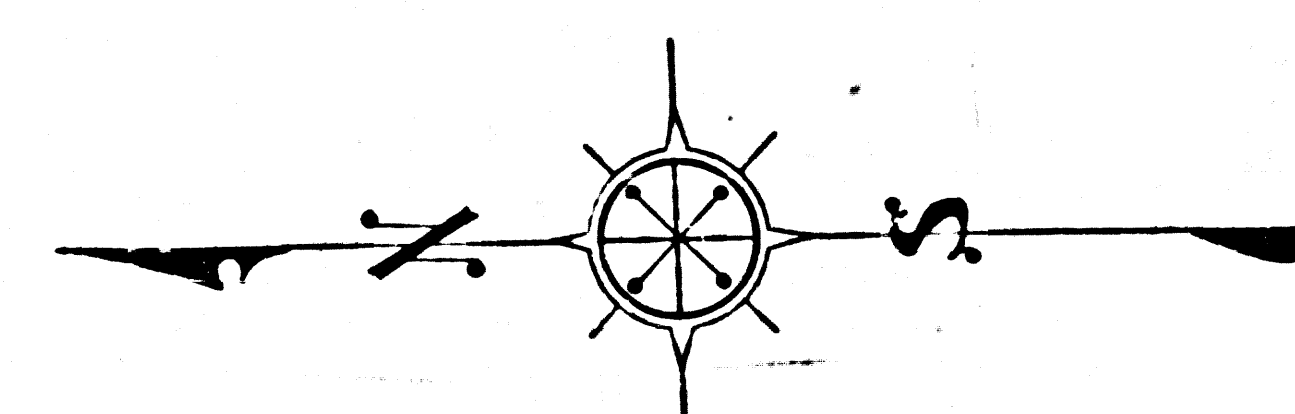
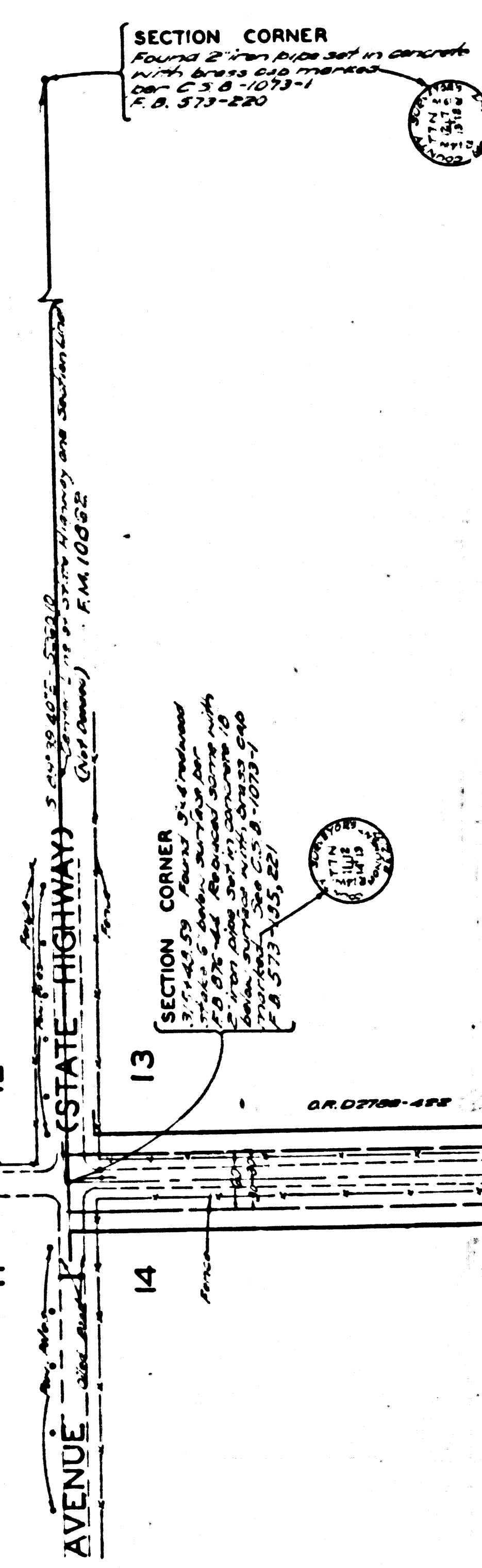
12

11

10

CONTRACT NO. 50-1158-2
SHEET NO. 5 OF 5 SHEETS
DATE: 10/2/54

T. 7 N. R. 14 W.



FOR

LATER

SURVEY

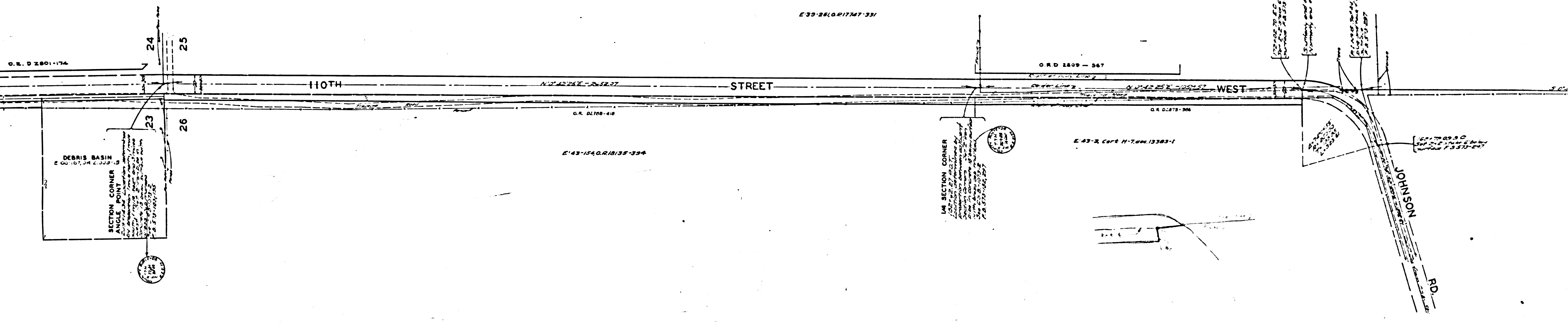
ACQUEDUCT

STREET

STORM

CSB-1158-2
A 5 OF A 5

SHEET NO. 5 OF 5 SHEETS
DATE: 10/2/54



SURVEY

SEE

C.S.B-5295

CSB-1158-2
A2 OF A5