

NOTE.
 Elevations are in feet above USGS or mean Sea Level Datum.
 Elevations of all Lateral Inlets refer to the intersection of the invert of the Lateral with the inside face of the main drain or structure.
 Stations of all Connector Pipe Inlets refer to the intersection of the center line of the connector pipe with the inside face of the main drain or structure. Bring connector pipes in parallel to pipe drains where structures are not designated.
 Connector Pipes in Box Sections shall be laid in conjunction with Junction Structure NM (Standard Dc 35) unless otherwise specified by the Engineer of Construction.
 All Pipes not otherwise specified shall be Standard Strength Cement Concrete Pipe.
 For Structures marked SECTION - see structural details shown to left hereon.
 All Structures not otherwise specified are Standard Structures. See details on Standard Plans.
 For details of Cement Concrete for Reinforced Concrete Arch Section, see Standard Dc 38.
 For details of Reinforcing Steel for Reinforced Concrete Arch Section, see Standard Dc 60.
 Catch Basins shall be built with a curb face of 10' or more which shall include a minimum depression at opening of 4' below gutter grade unless otherwise specified.
 Elevations shown of catch basins refer to top of proposed curb at center line of basin if one elevation is given or at ends of basin if two elevations are given.
 Sanitary Sewers crossing over or with a clearance of 1.50 feet or less under Storm Drains shall be constructed or reconstructed as shown on Standard Dc 36, except as otherwise specified on detail Sewer Plan.

**PINE-HAWTHORNE
 DRAINAGE SYSTEM**
 OF THE COUNTY OF LOS ANGELES, CALIFORNIA
**PLAN AND PROFILE OF
 FREEMAN AVENUE LINE
 CENTURY BOULEVARD STUB EAST
 BOX SECTIONS**

SHEET 1 OF 1 SHEETS
 OCT. 1935
 ALFRED JONES - COUNTY SURVEYOR
 RECOMMENDED BY *E. Smith* CHIEF DEPUTY
 APPROVED BY *Alfred Jones* COUNTY SURVEYOR

REFERENCE	DESIGNED	DATE
F.B.	P. I. HUNSTOCK	AUG 1935
T.B.	E. E. MITCHELL	
C.L.	J. H. RICE	SEPT 1935
	J. H. WARTLEY	SEPT 1935

CSB-1162
 A10FA7

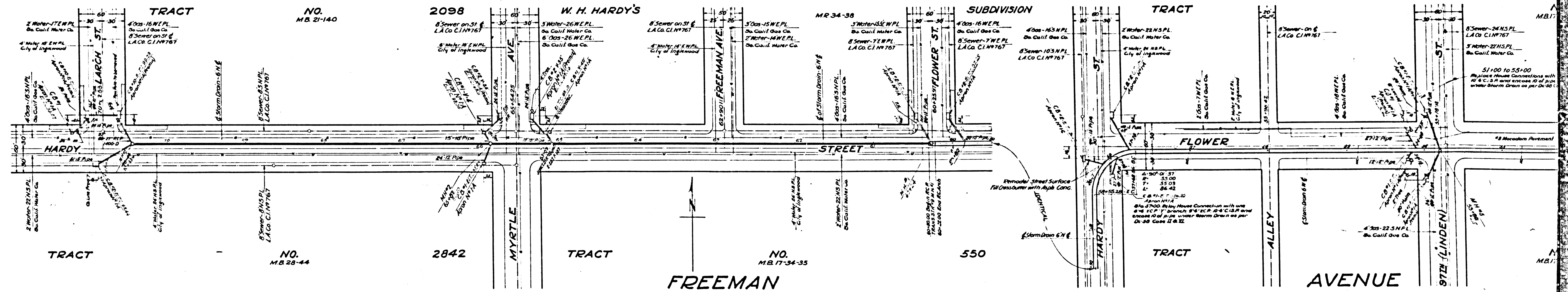
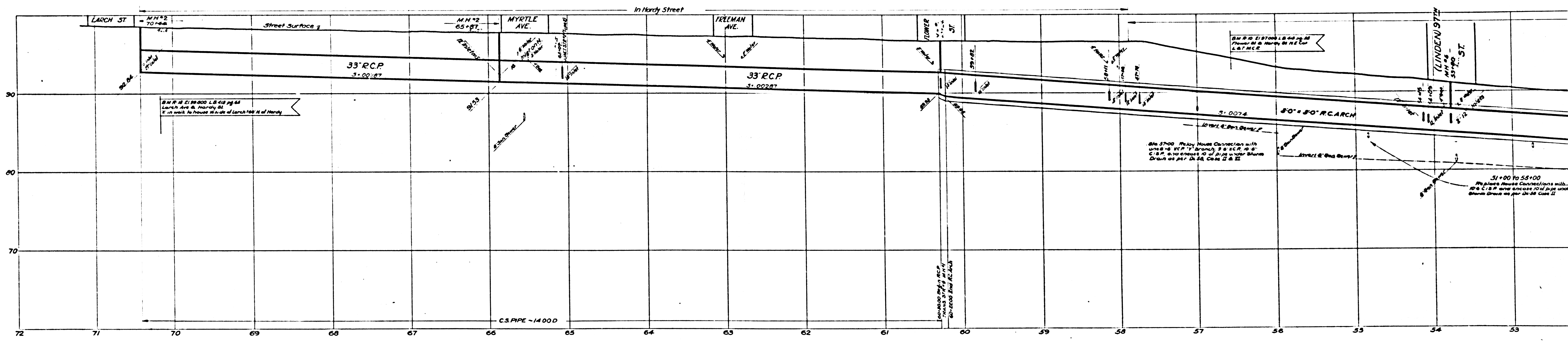
LINE

NO. MB. 15-50, 51

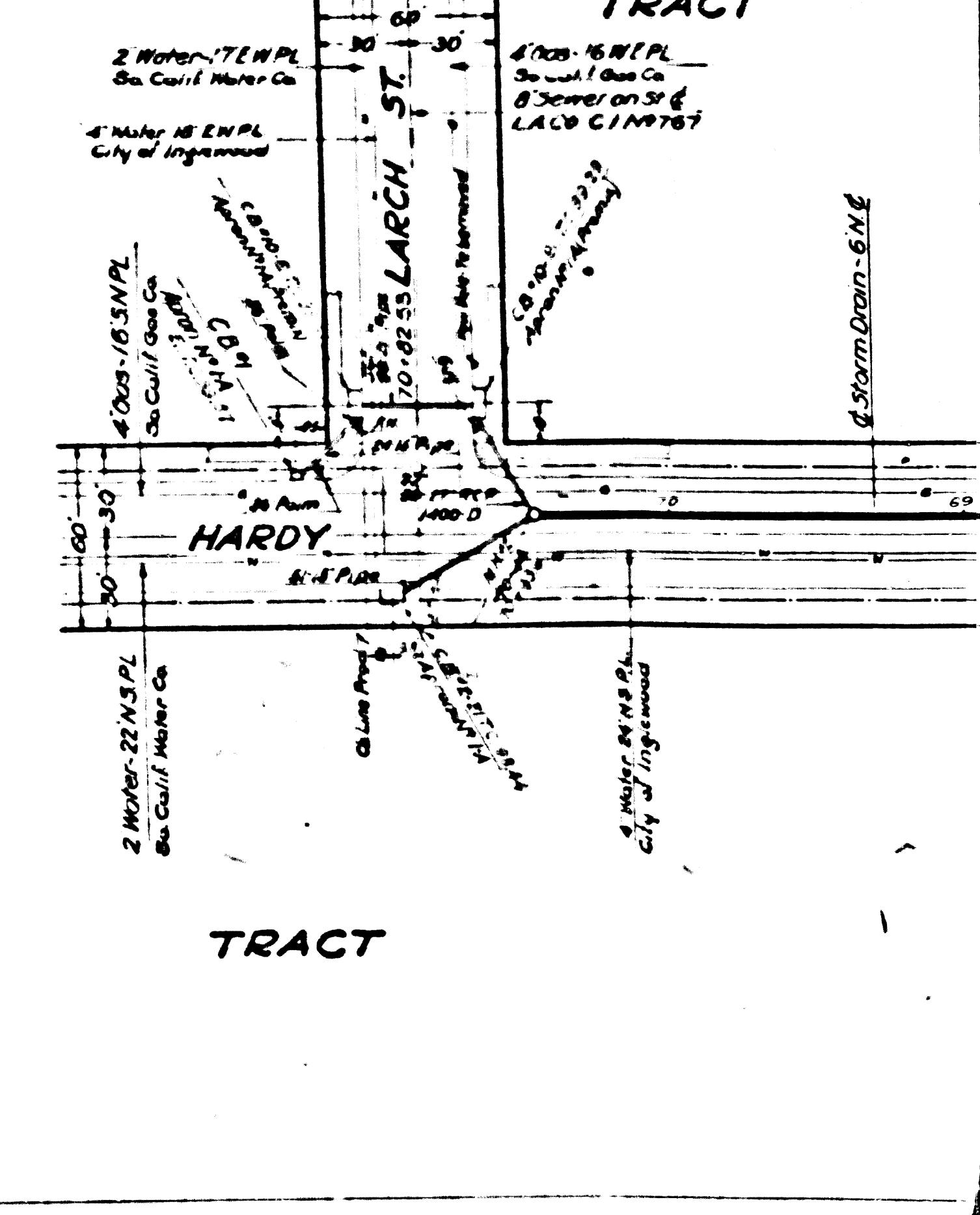
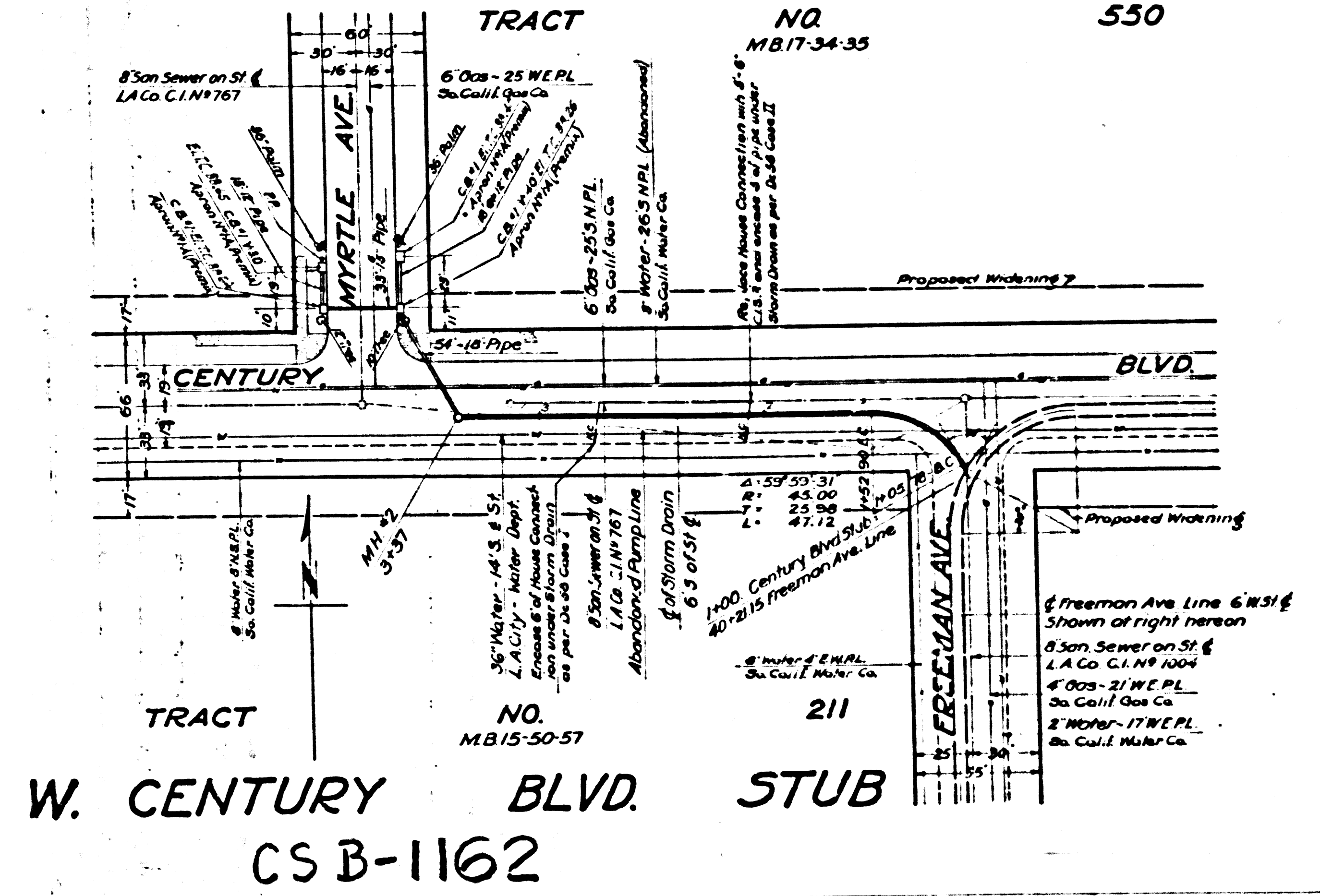
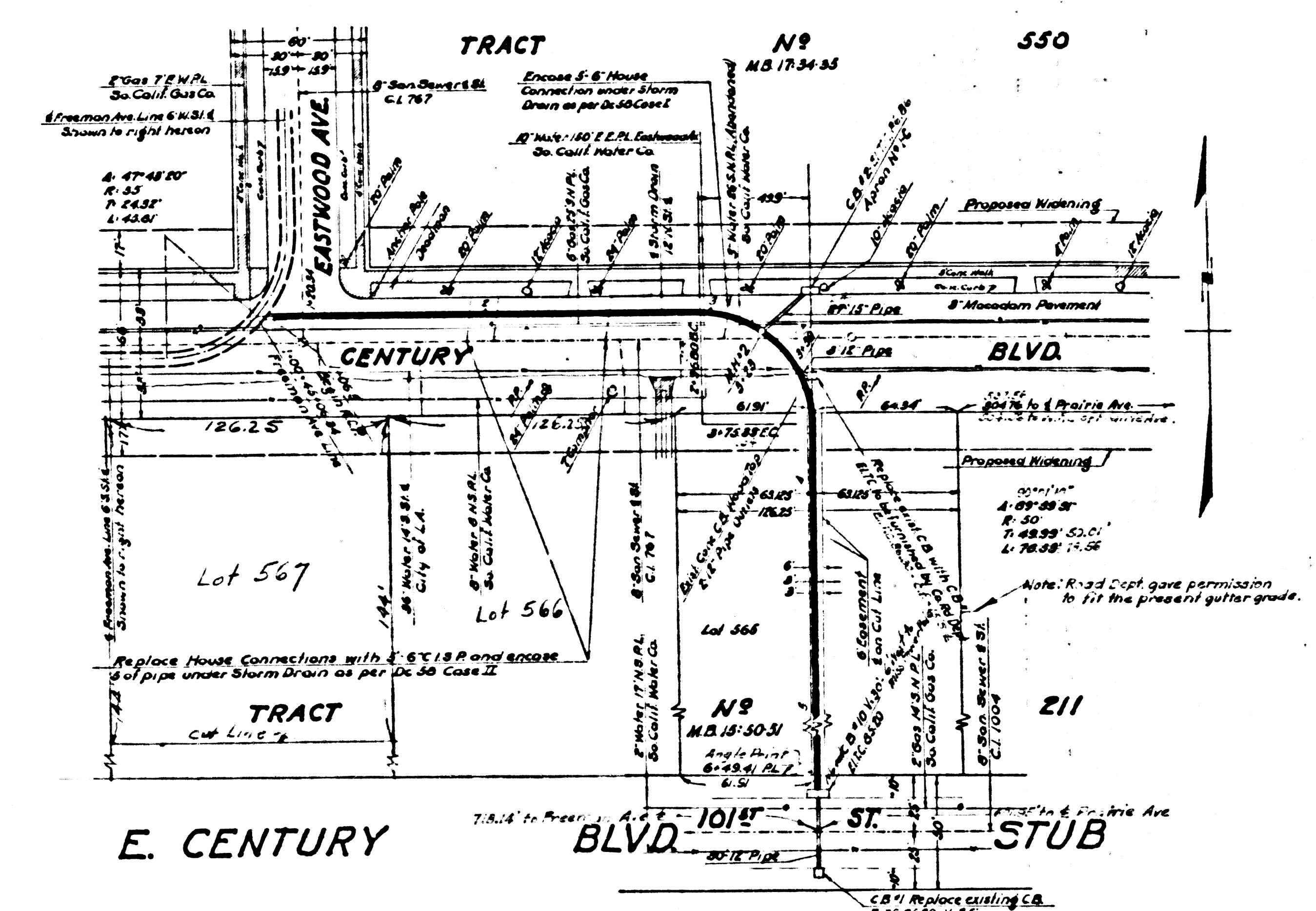
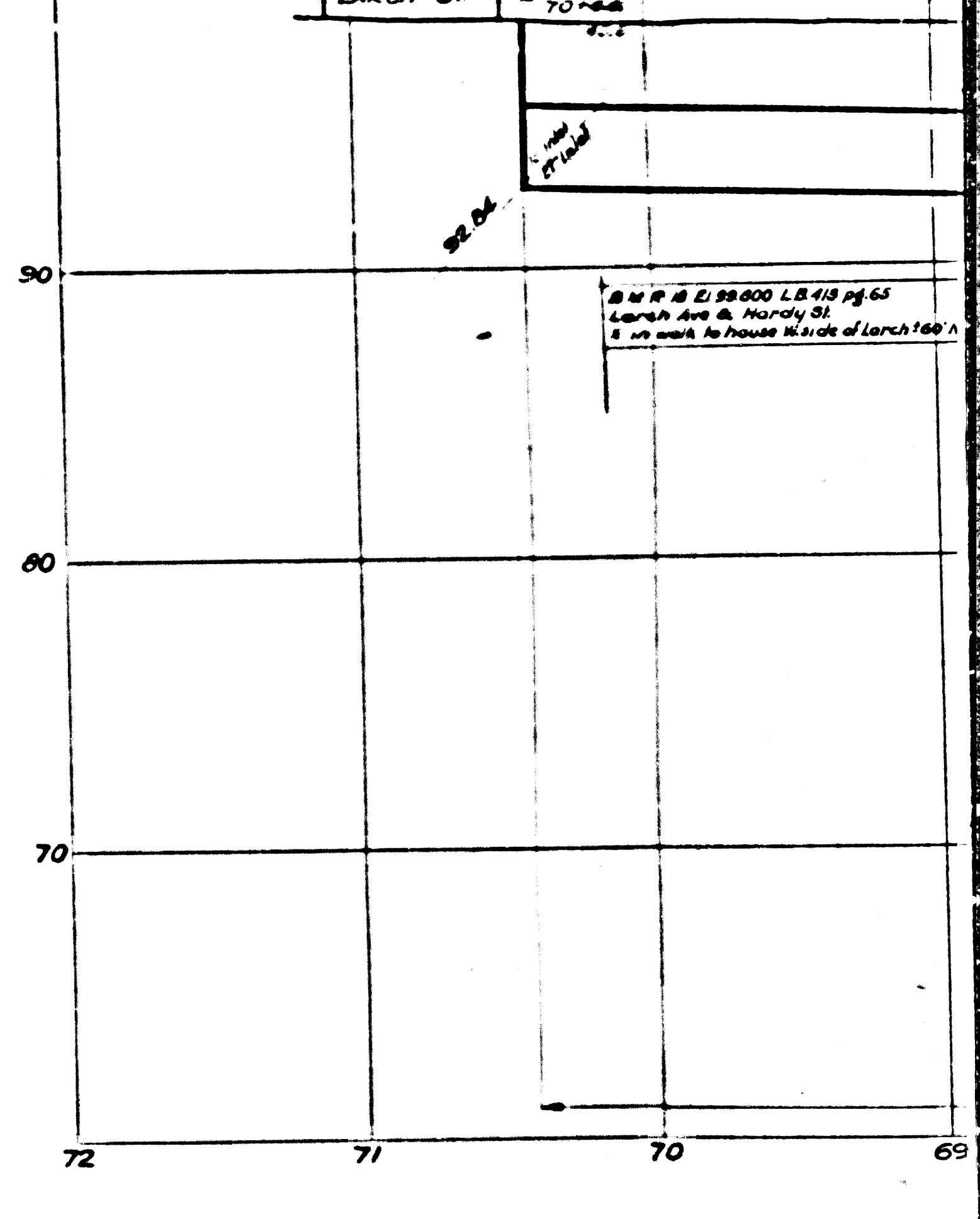
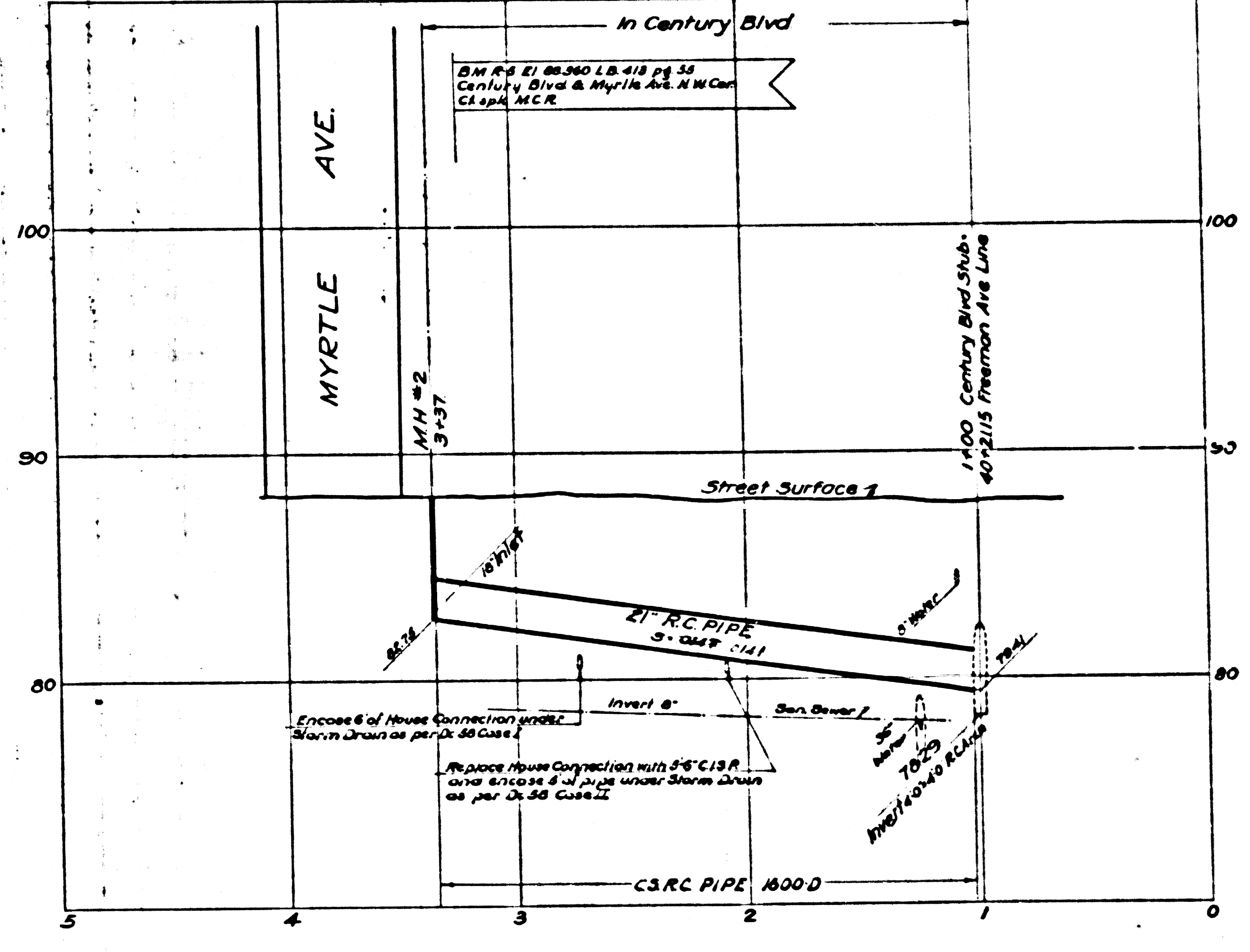
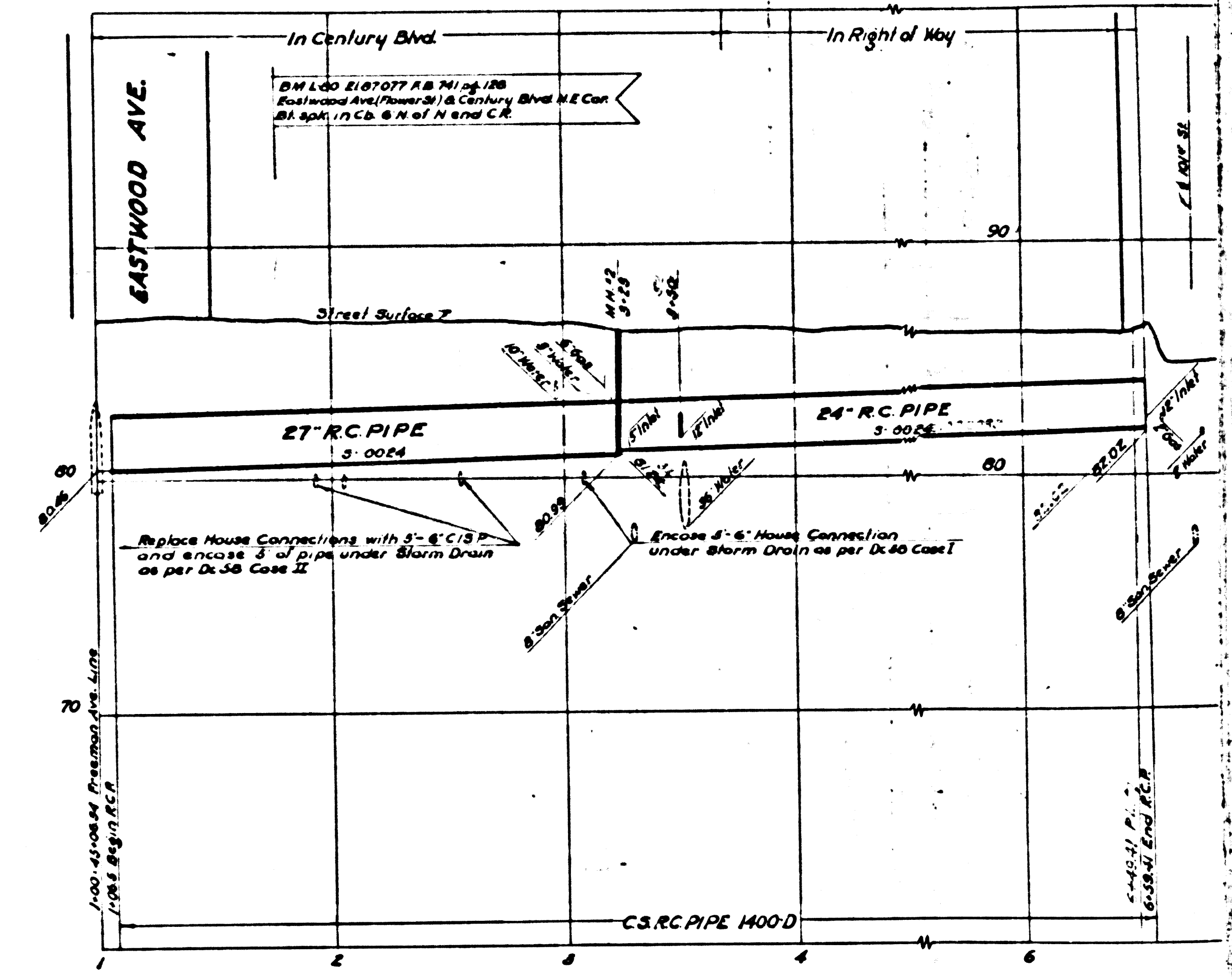
CSB-1162 PLAN PROFILE AND BOX SECTIONS

CSB-1162 PLAN PROFILE AND BOX SECTIONS

Trim Prints to this Line



CS B-1162
A5 OF A7



W. CENTURY BLVD. STUB
 CS B-1162
 AG OF A7

CONSULT DRAWING 2 MAP No B-1162

CONSULT DRAWING 2 MAP No B-1162

NOTE:

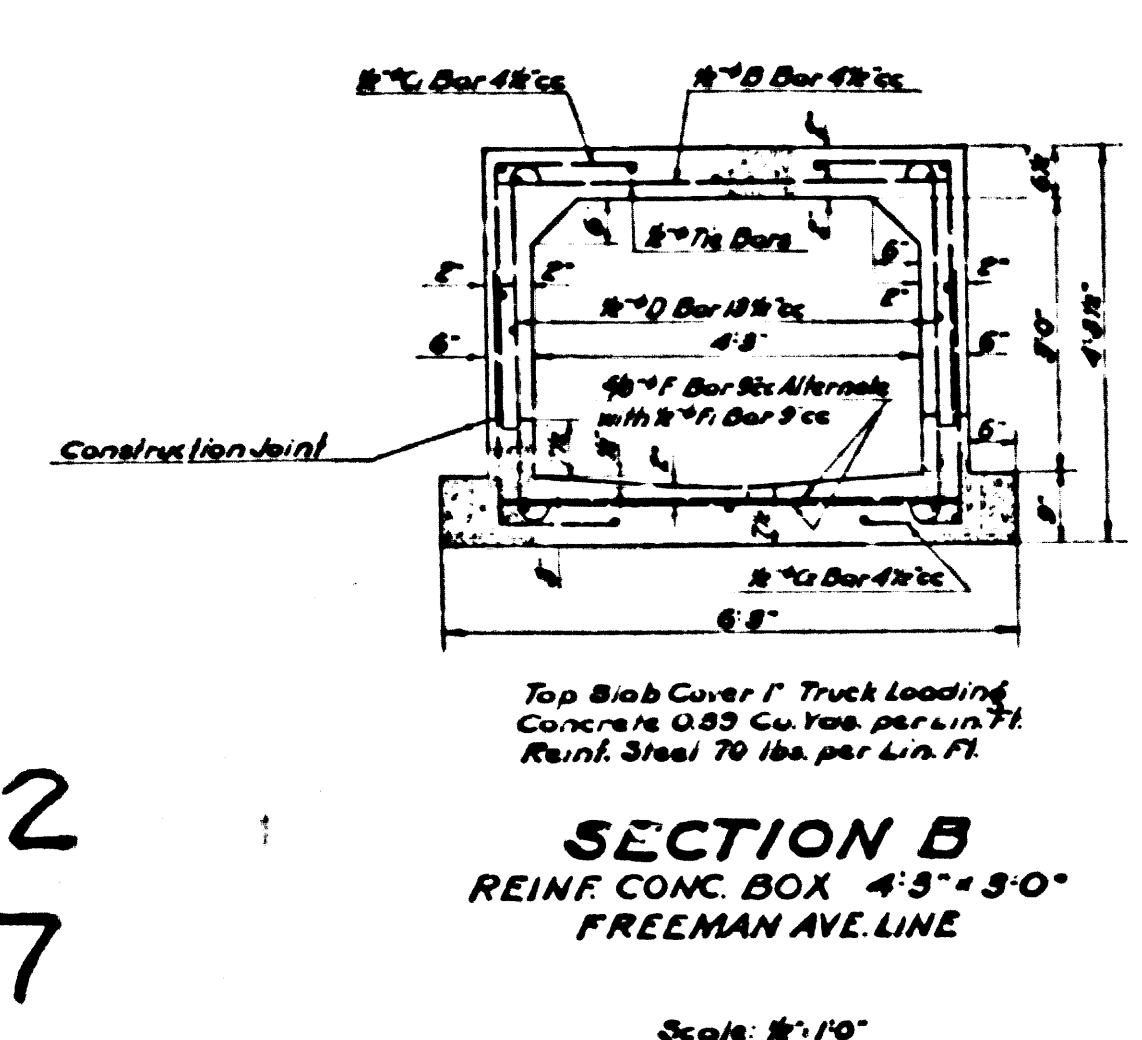
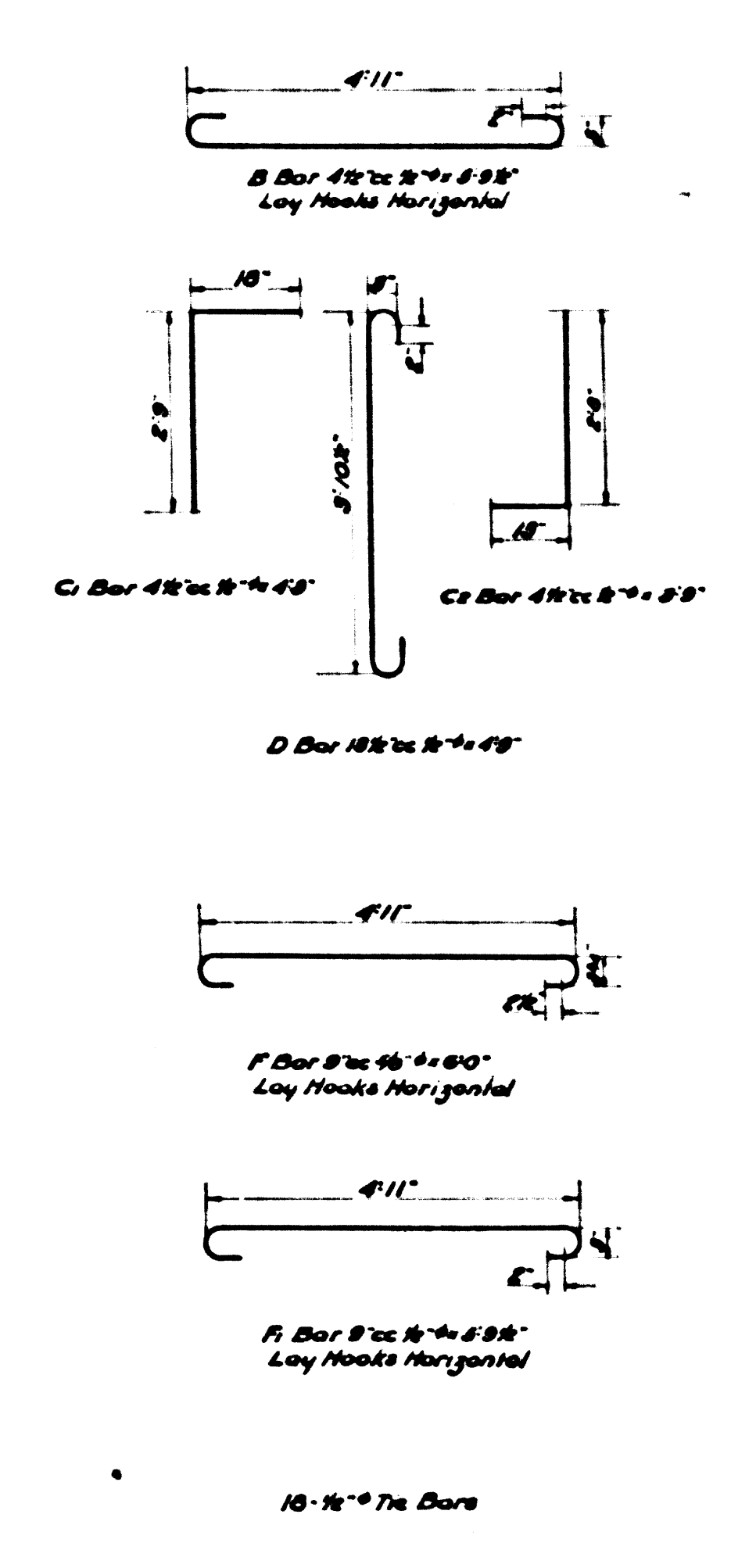
All Reinforced Concrete shall be Class A Concrete unless otherwise specified.

Dimensions for depth of Reinforcing Steel are from face of concrete to center of bars.

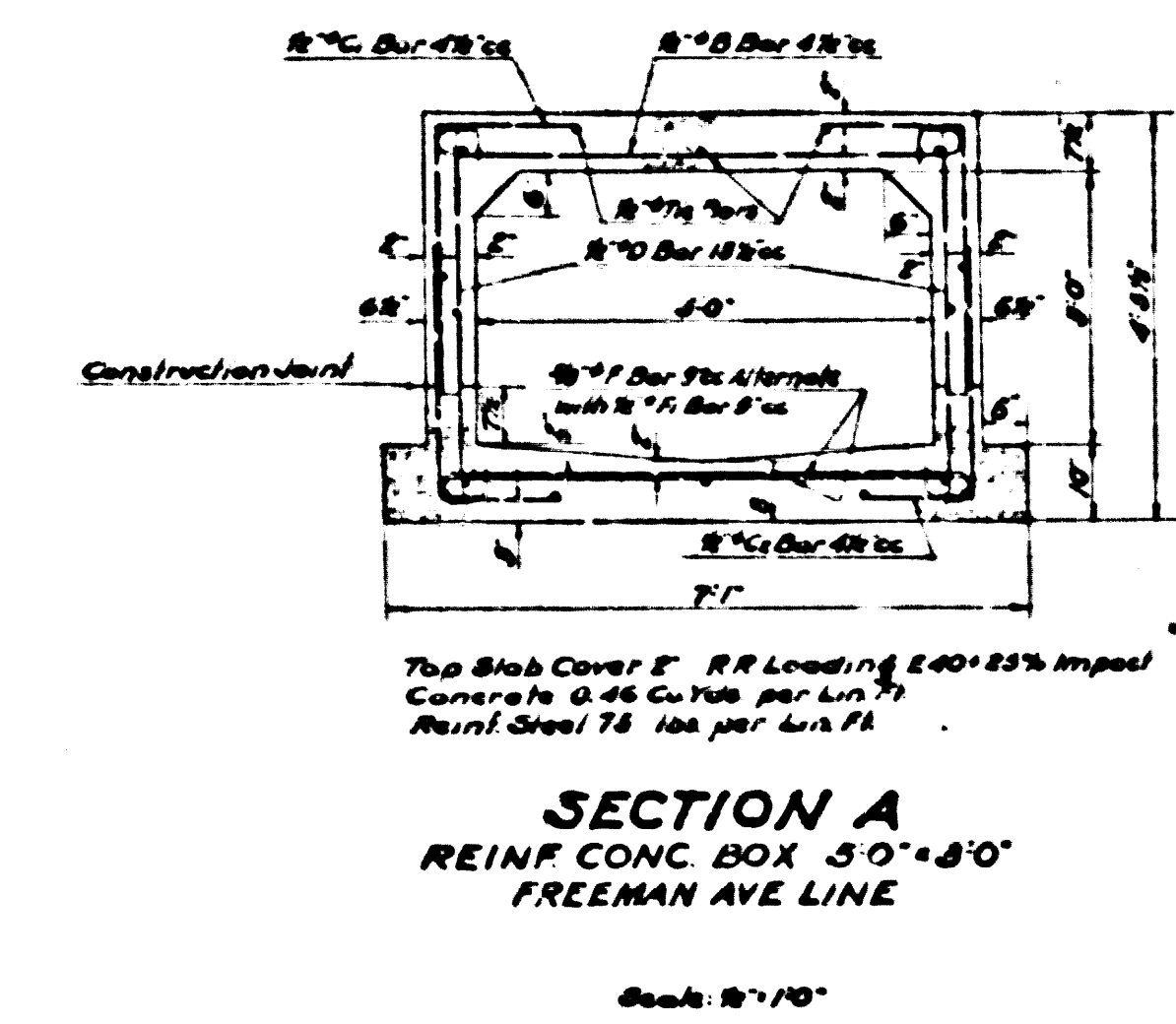
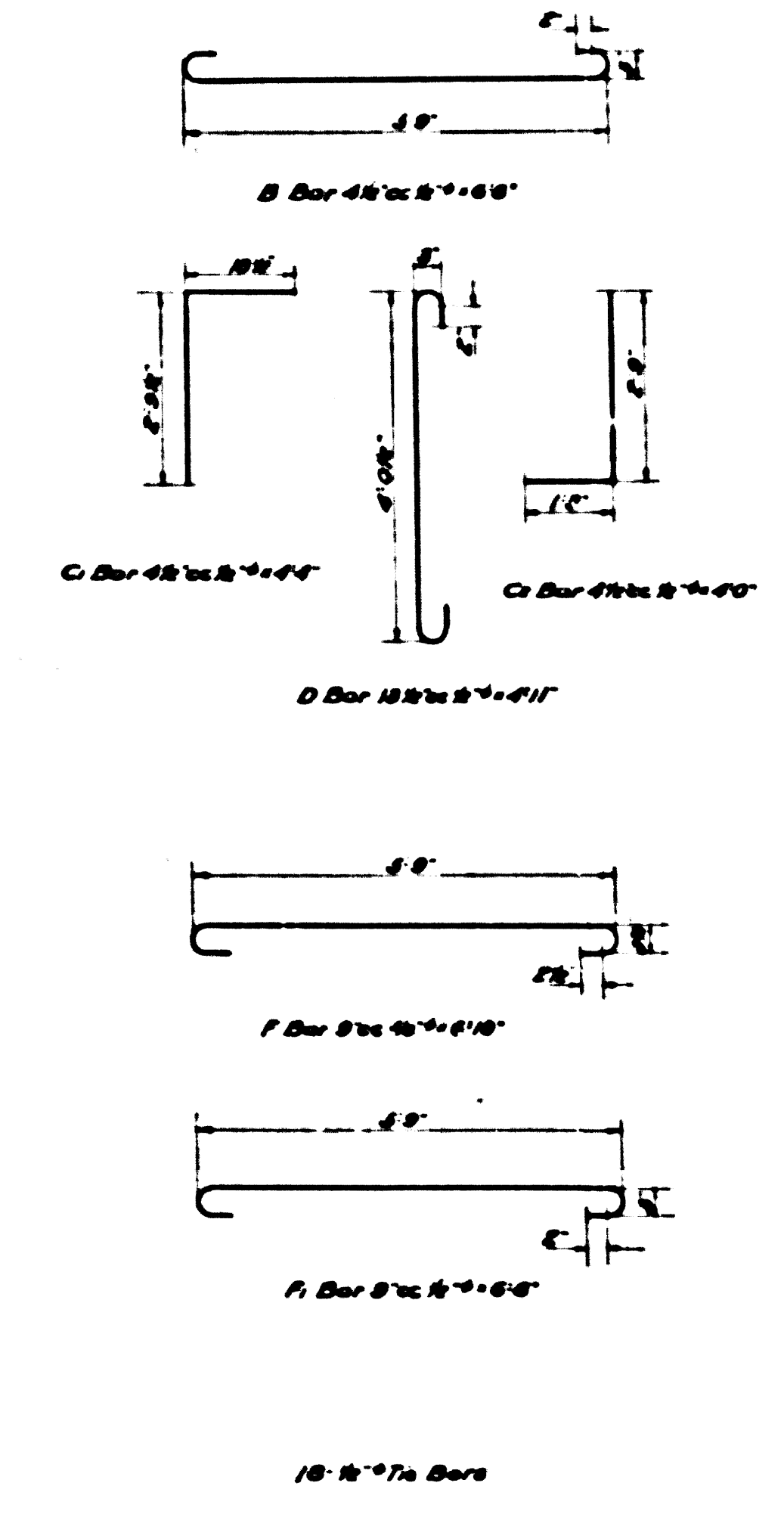
Reinforcing Bars shall be round deformed bars of intermediate grade steel, unless otherwise specified, and all splices shall be lapped 36 bar diameters.

Weep holes $\frac{1}{4}$ inch in diameter, spaced not more than 5 feet each way shall be placed in each sidewall, unless otherwise specified.

For arrangement of Drain Tile under structures see Standard Dc 40.

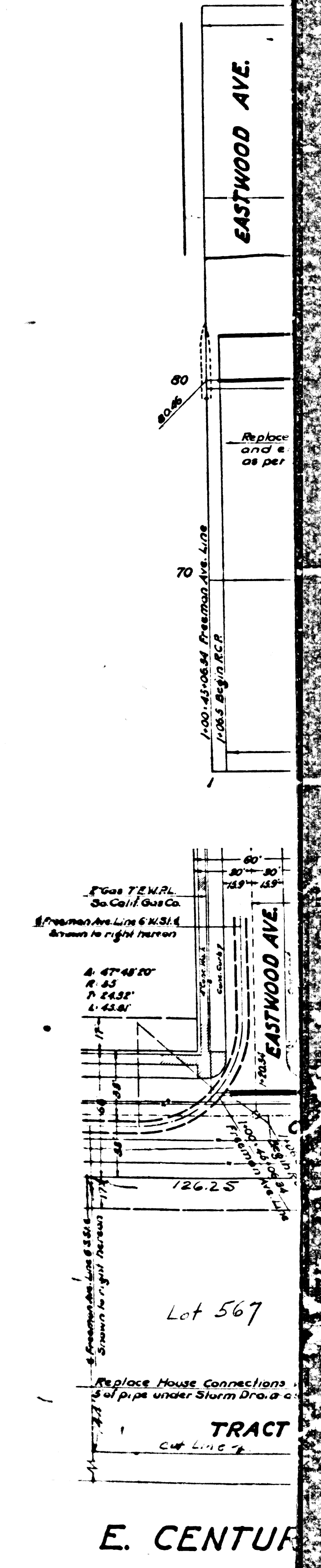


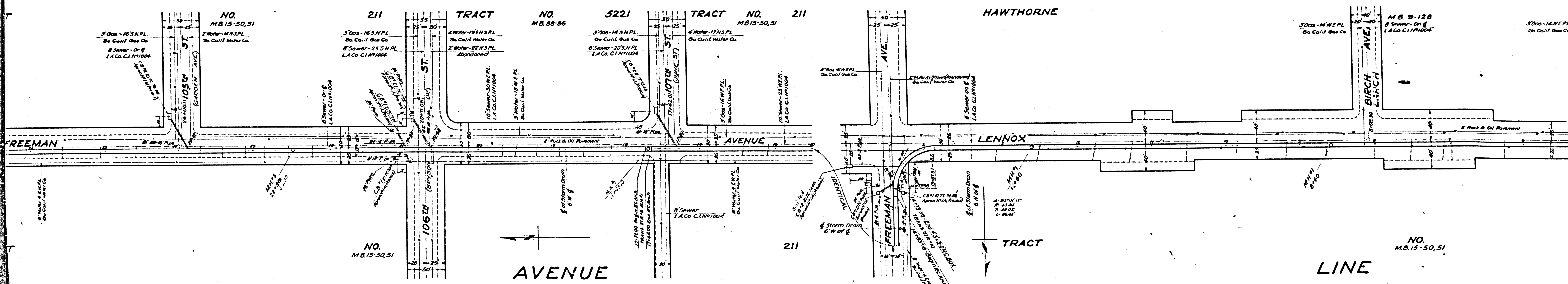
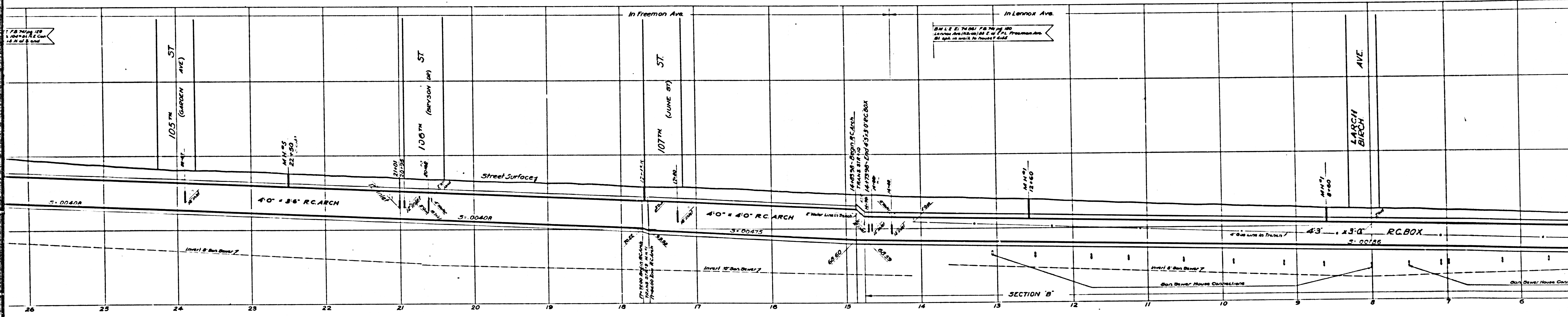
SECTION B
REINF CONC BOX 4'5" x 3'0"
FREEMAN AVE LINE
Scale 1/10"



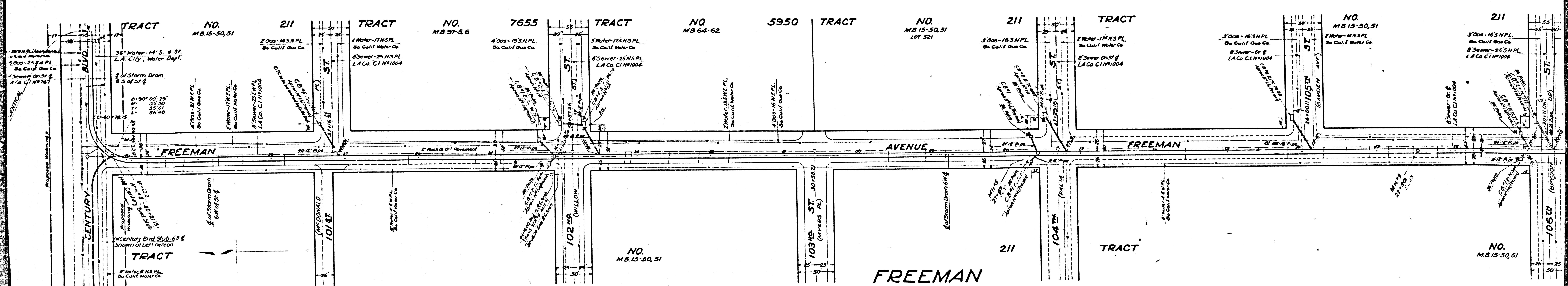
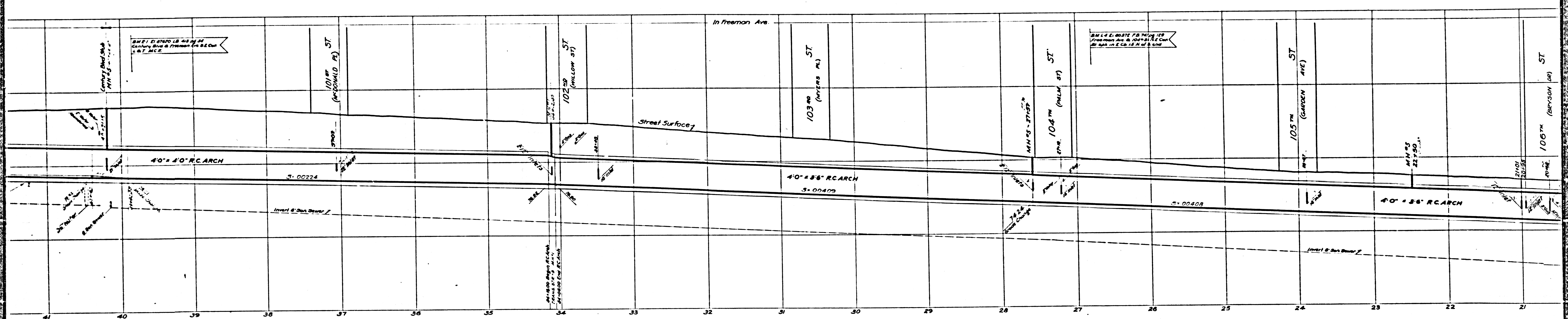
SECTION A
REINF CONC BOX 5'0" x 8'0"
FREEMAN AVE LINE
Scale 1/10"

CS B-1162
A7 OF A7

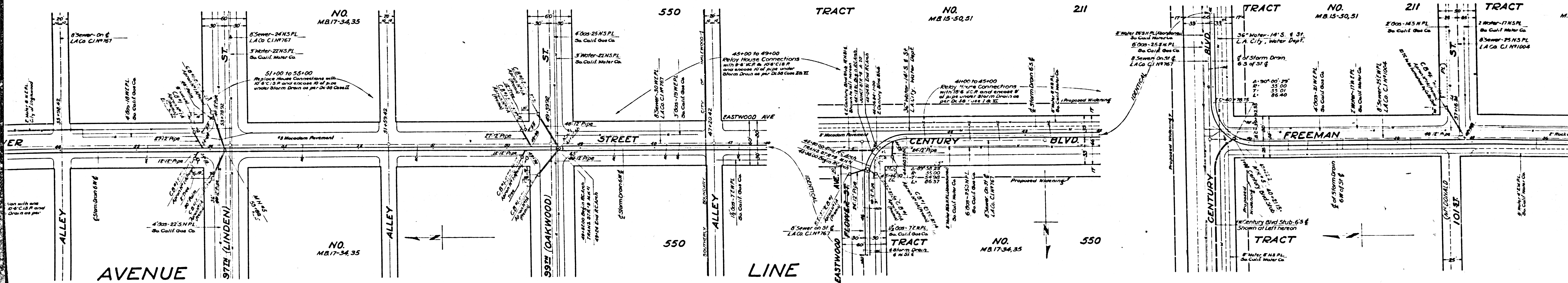
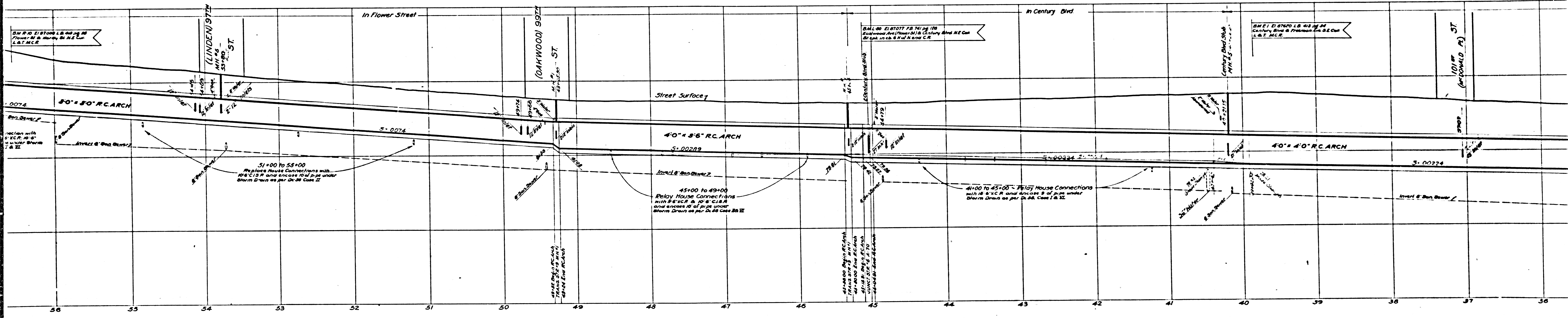




CSB-1162
A20FA7



CSB-1162
A30FA7



CSB-1162
A 40FA7