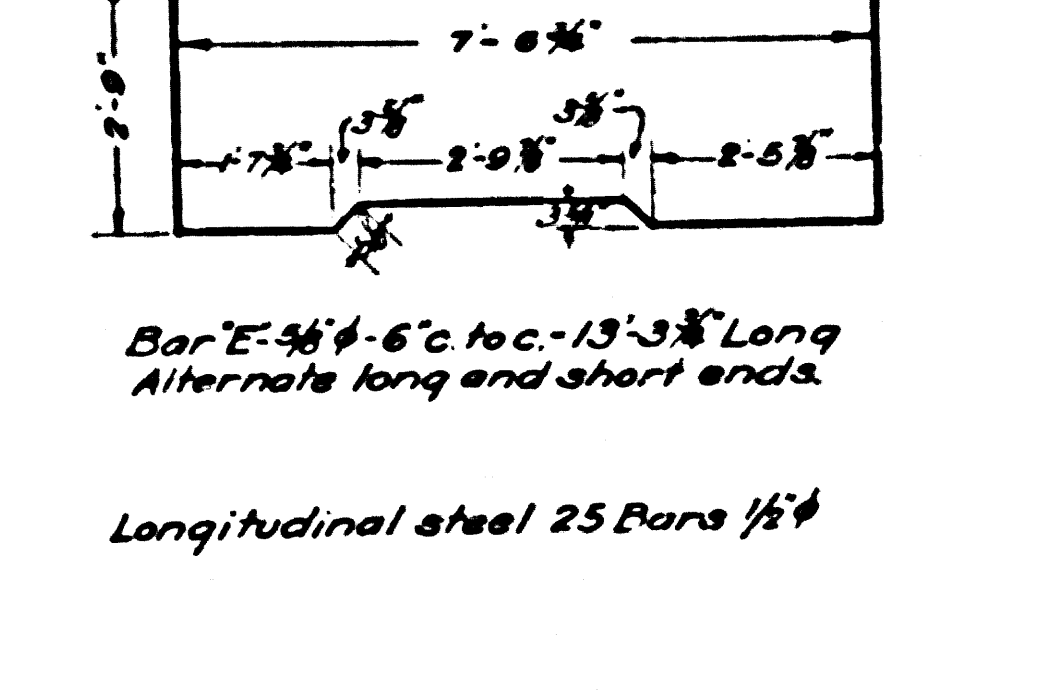
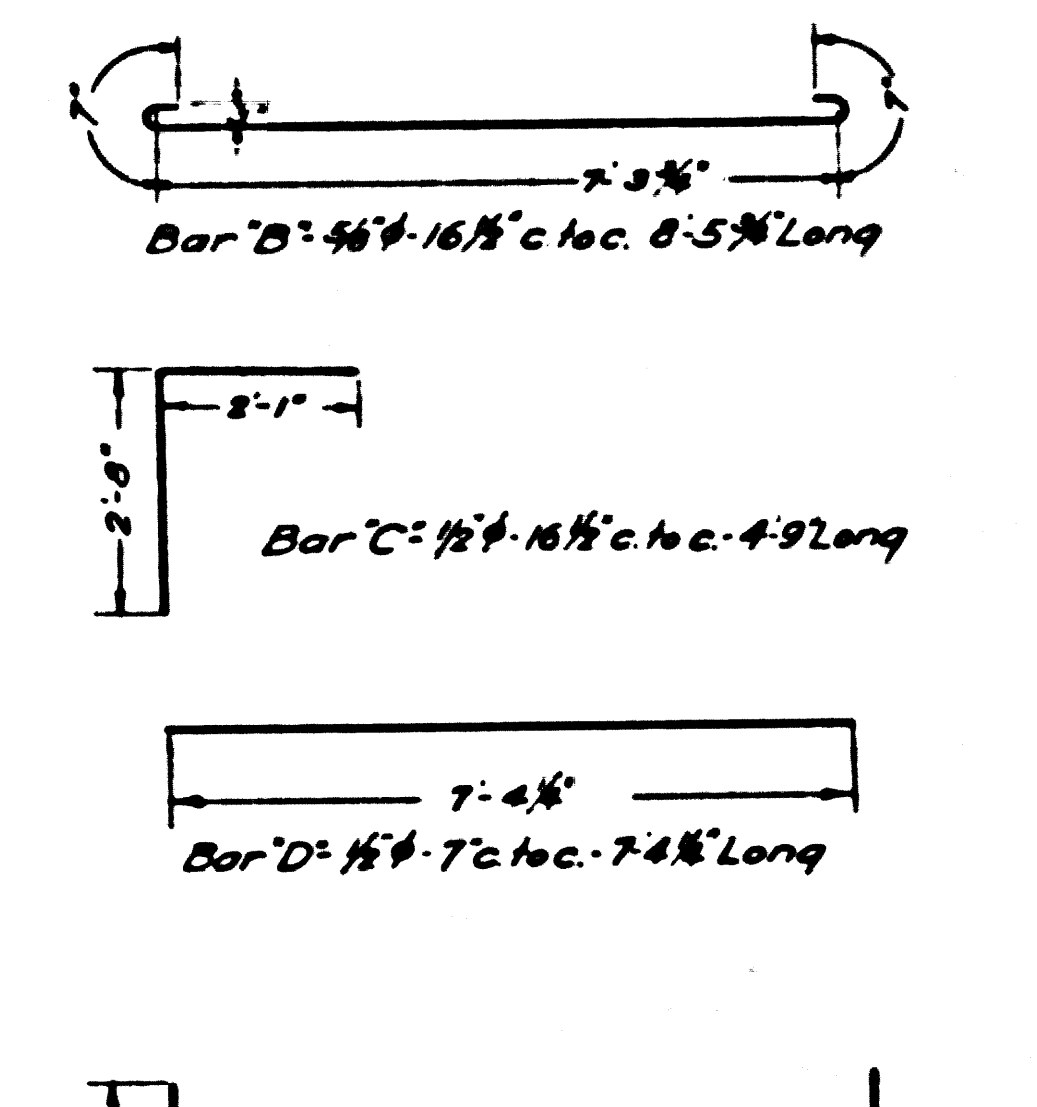
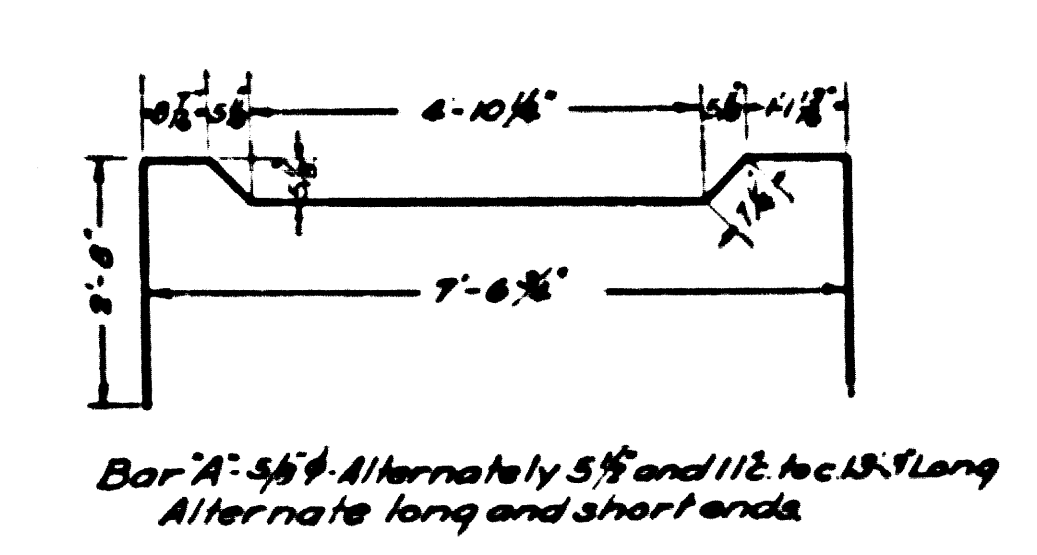
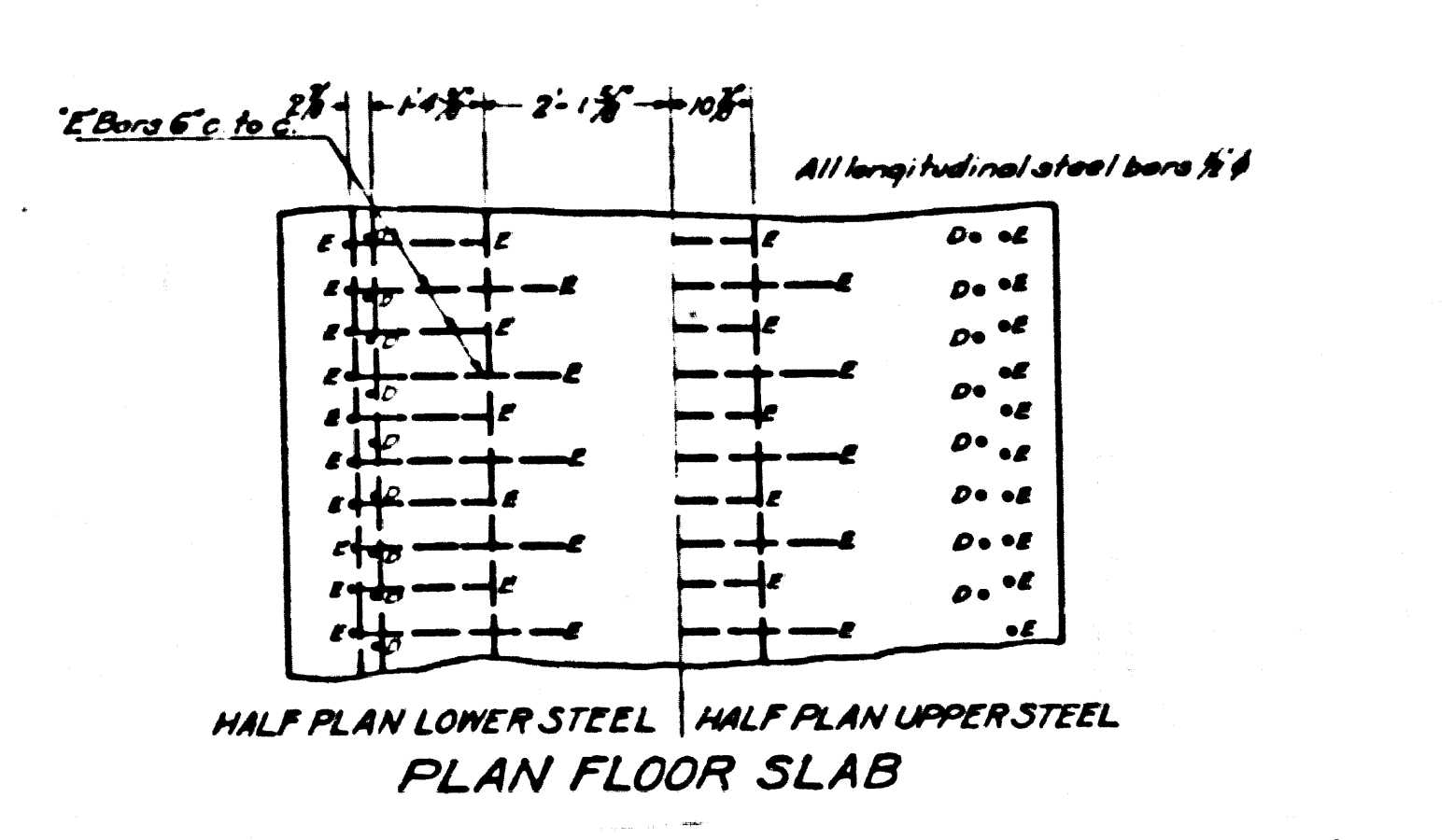
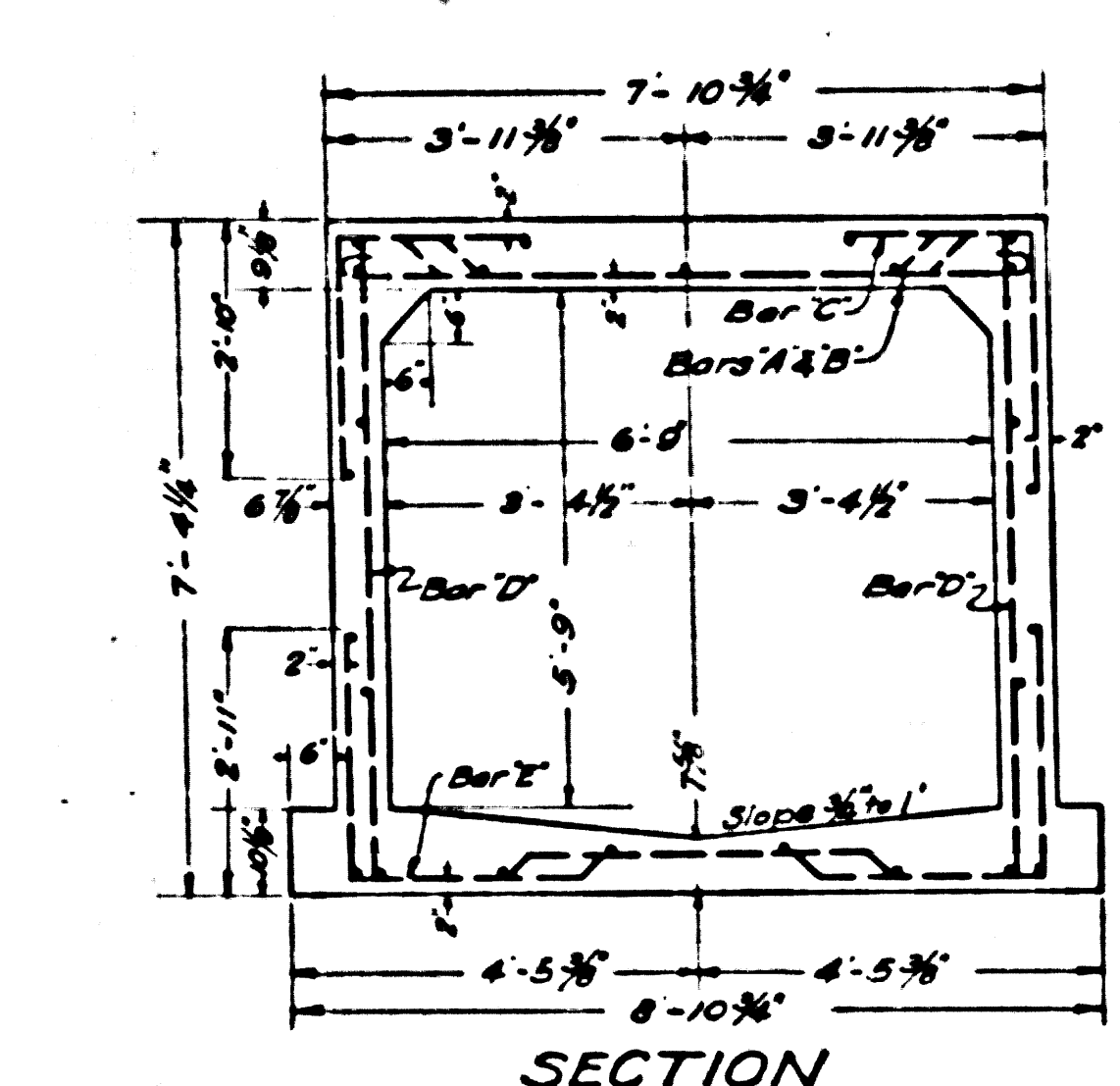
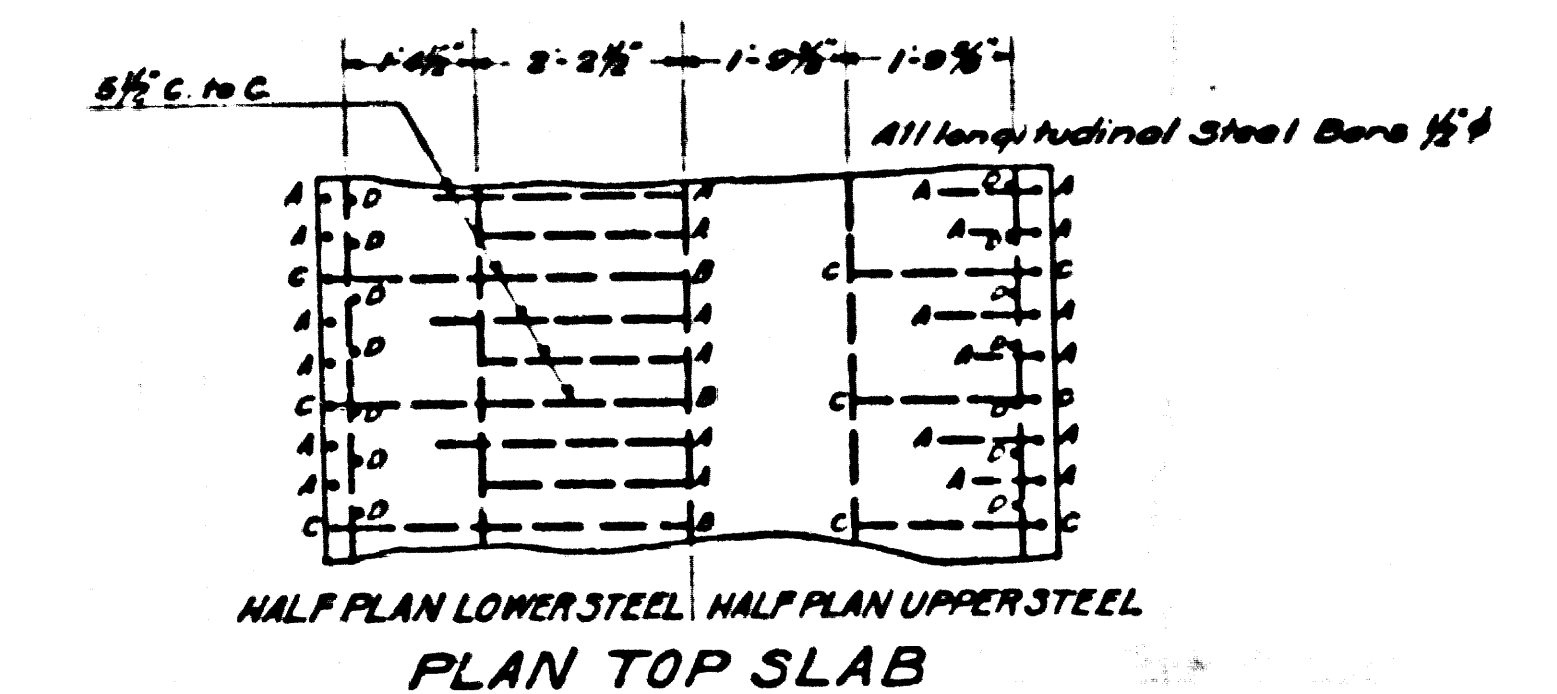


Section "B" from Station 58+05 to Station 66+90 Olive Ave. Trunk. See Sheet #2  
 Total Length 885 feet  
 Class "A" Concrete 0.5062 Cubic Yards per Foot  
 Reinforcing Steel 77,171 Pounds per Foot (as tangent)  
 Top Slab: Cover 2 to 2.5 Ft., Total Load 116.4 Pounds per Square Foot.  
 Dimensions to Reinforcing Steel Refer to Center Lines.  
**REINFORCED CONCRETE BOX 6'0"x5'9"**  
**SECTION "B"**  
 FROM STATION 58+05 TO STATION 66+90 OLIVE AVE. TRUNK  
 WEST ALTADENA STORM DRAIN  
 ALL CONCRETE TO BE CLASS "A"  
 SCALE 1/2"=1'



Section "A" from Station 67+00 to Station 69+27.36 of Olive Ave. Trunk. See Sheet #2  
 Total Length 227.36 feet  
 Class "A" Concrete 0.7276 Cubic Yards per Foot  
 Reinforcing Steel 94,033 Pounds per Foot (as tangent)  
 Top Slab: Cover 2 to 2.5 Ft., Total Load 135.7 Pounds per Square Foot.  
 Dimensions to Reinforcing Steel Refer to Center Lines.  
**REINFORCED CONCRETE BOX 6'9"x5'9"**  
**SECTION "A"**  
 FROM STATION 67+00 TO STATION 69+27.36 OLIVE AVE. TRUNK  
 WEST ALTADENA STORM DRAIN  
 ALL CONCRETE TO BE CLASS "A"  
 SCALE 1/2"=1'

NOTES:  
 All reinforced concrete structures shall be of Class "A-1" Concrete.  
 Weep holes 1/2" in diameter shall be placed in each sidewall and spaced not more than five feet each way.

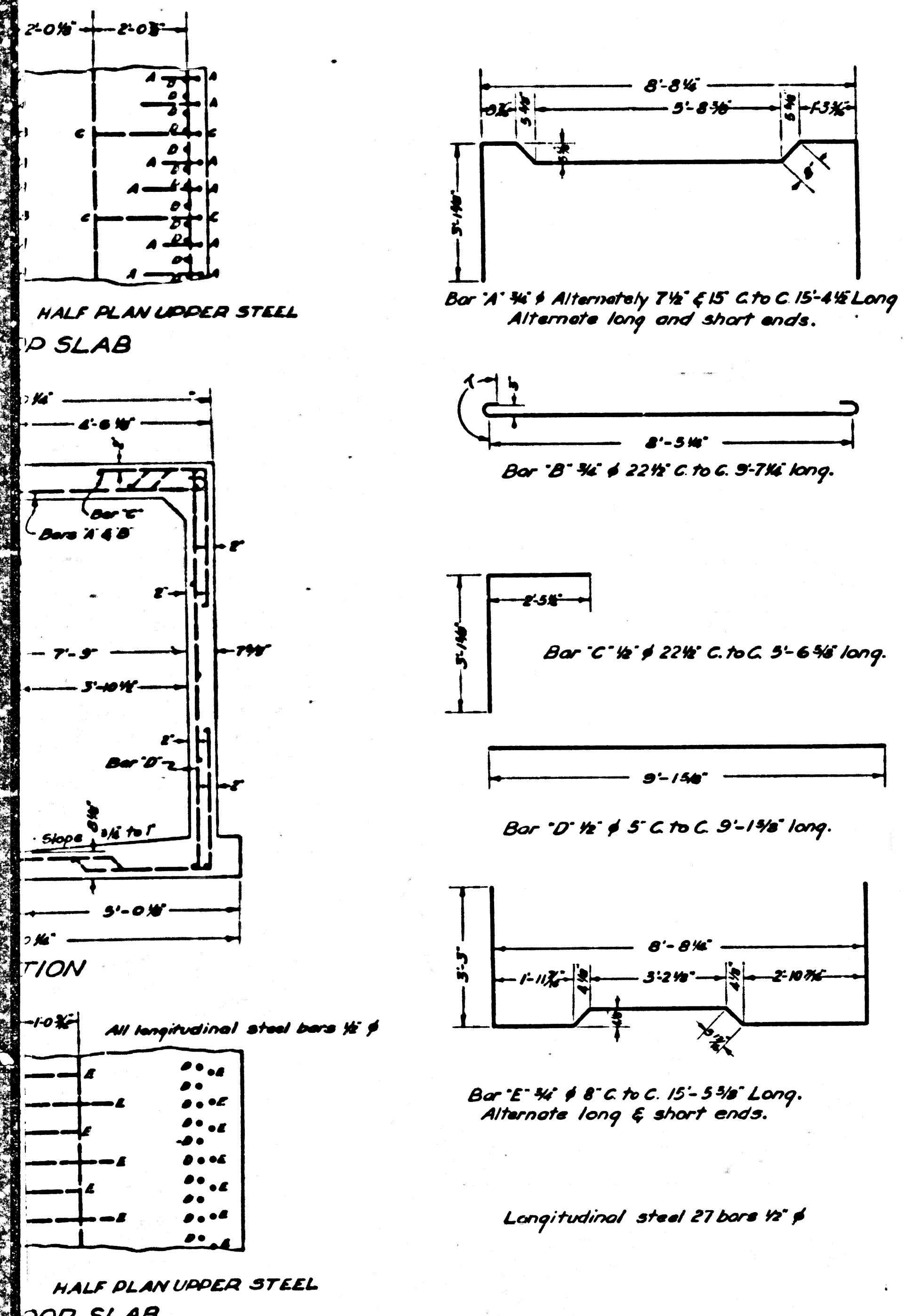
**WEST ALTADENA DRAINAGE SYSTEM**  
 OF THE COUNTY OF LOS ANGELES, CALIFORNIA  
 DETAILS OF BOX SECTIONS

SHEET 4 OF 5 SHEETS  
 MADE BY: ALFRED JONES COUNTY SURVEYOR  
 RECOMMENDED: [Signature] APPROVED: [Signature]

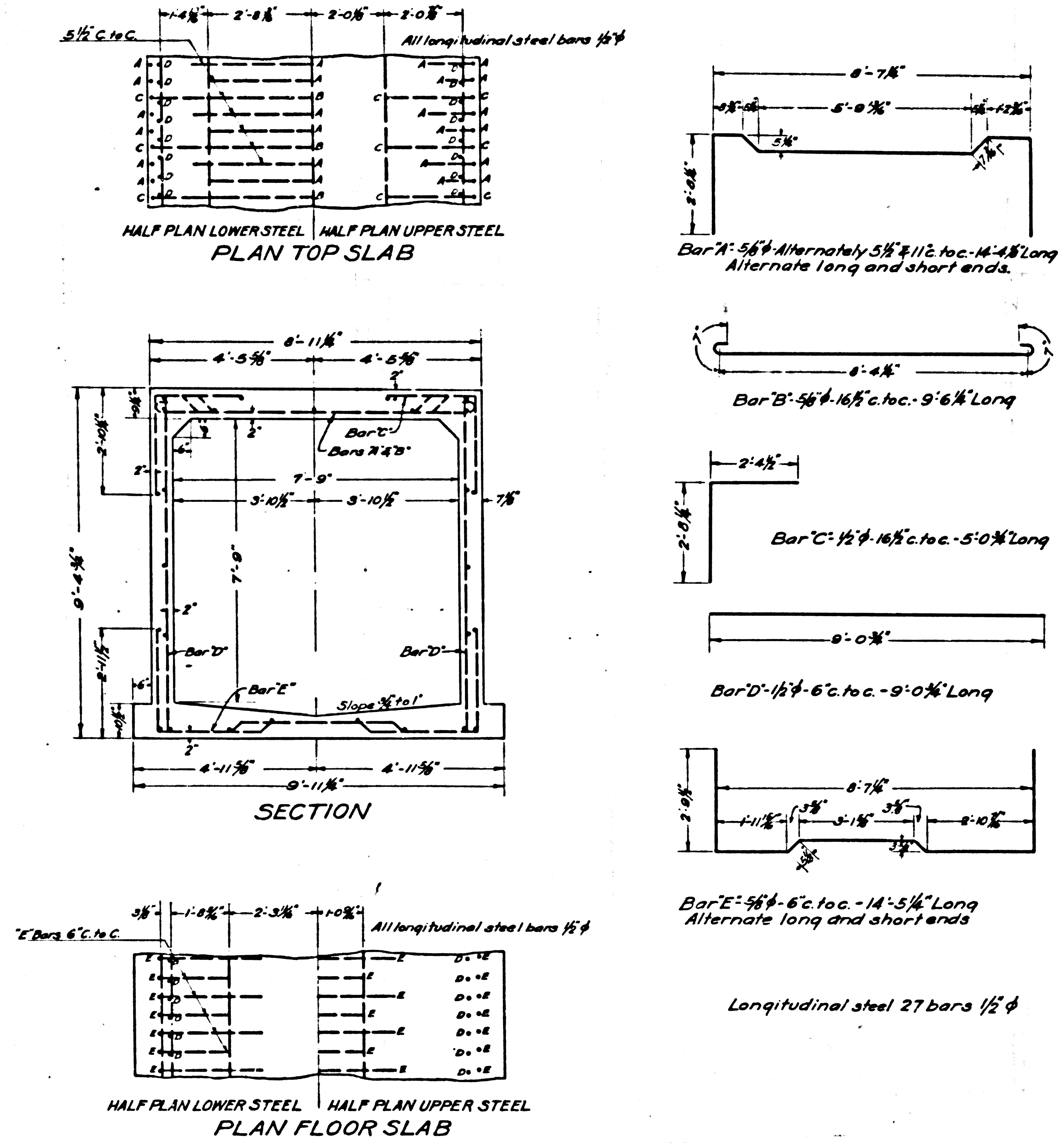
REFERENCE	DESIGNED	E.E. Mitchell	SEPT 1934
	TRACED	P.I. Munstock	OCT. 1934
	CHECKED	R.L. Gregory	SEPT 1934

CSB-1163-4  
 A1 OF A3

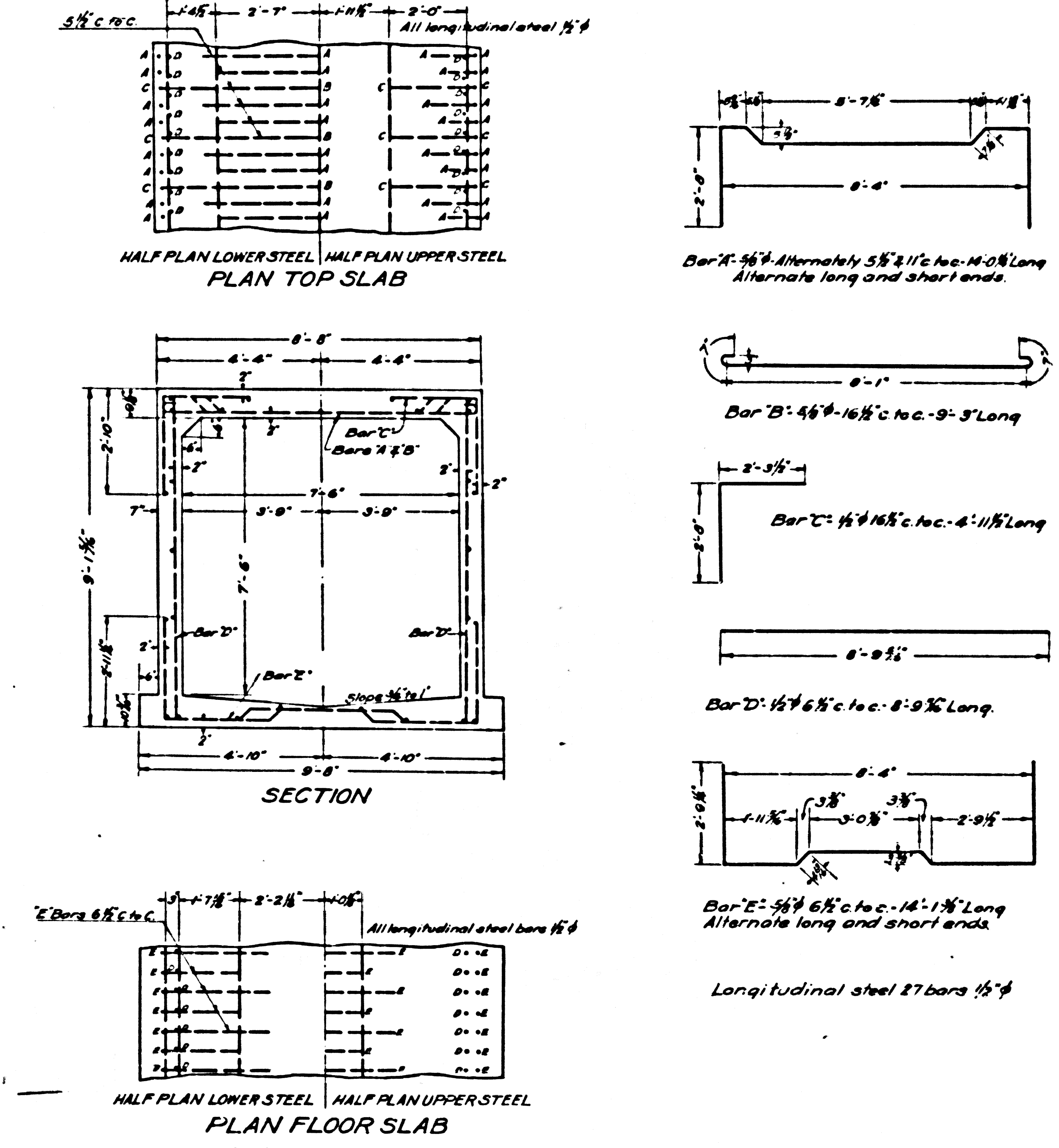




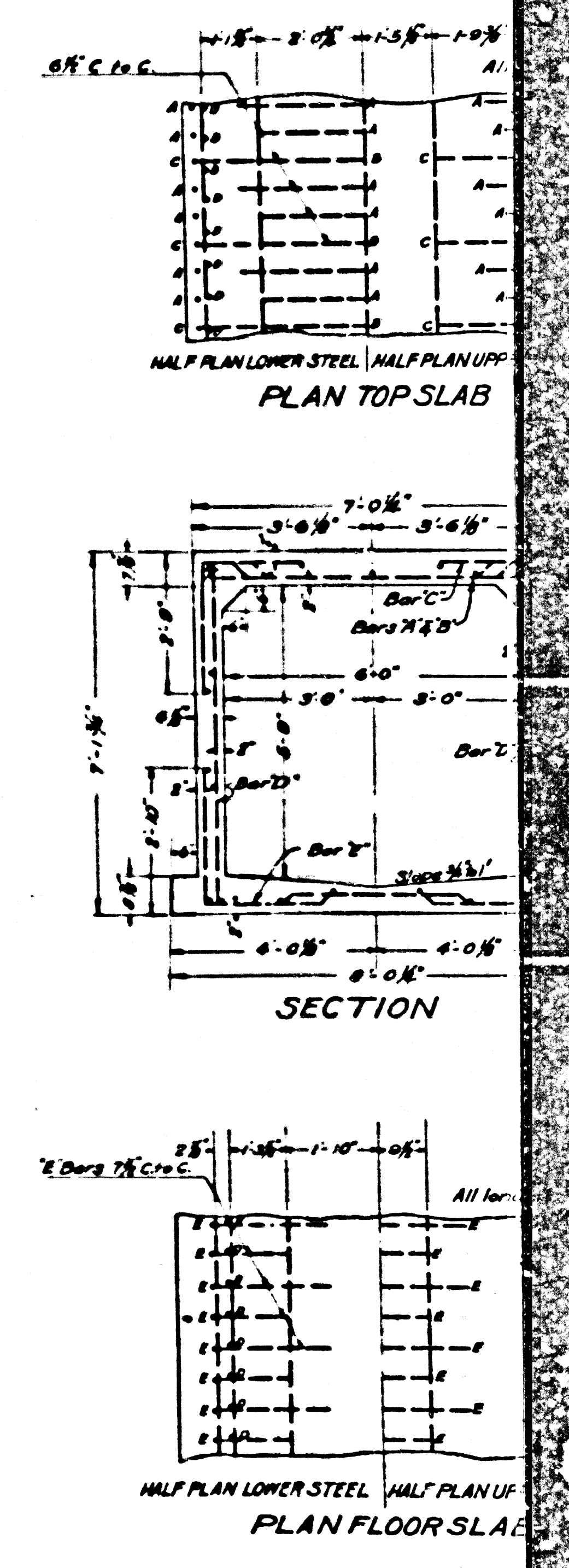
**REINFORCED CONCRETE BOX 7-9x7-9"**  
**SECTION "E"**  
 FROM STATION 25+00 TO STATION 30+00 OLIVE AVE. TRUNK.  
 WEST ALTADENA STORM DRAIN  
 ALL CONCRETE TO BE CLASS "A"  
 SCALE 1/2"=1'



**REINFORCED CONCRETE BOX 7-9x7-9"**  
**SECTION "D"**  
 FROM STATION 30+00 TO STATION 39+70 OLIVE AVE. TRUNK  
 WEST ALTADENA STORM DRAIN  
 ALL CONCRETE TO BE CLASS "A"  
 SCALE 1/2"=1'



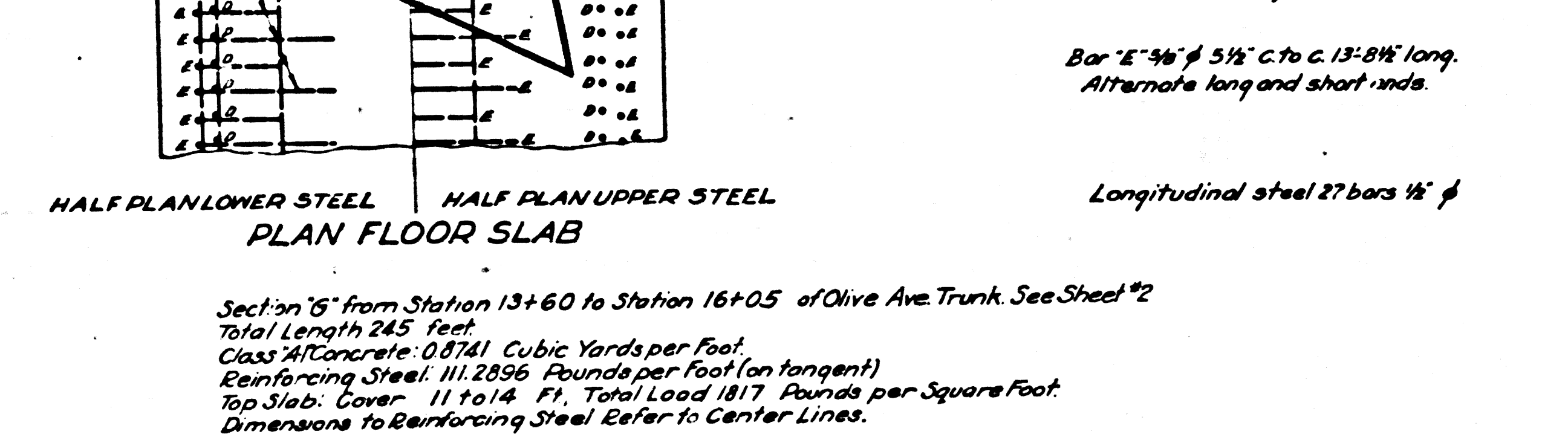
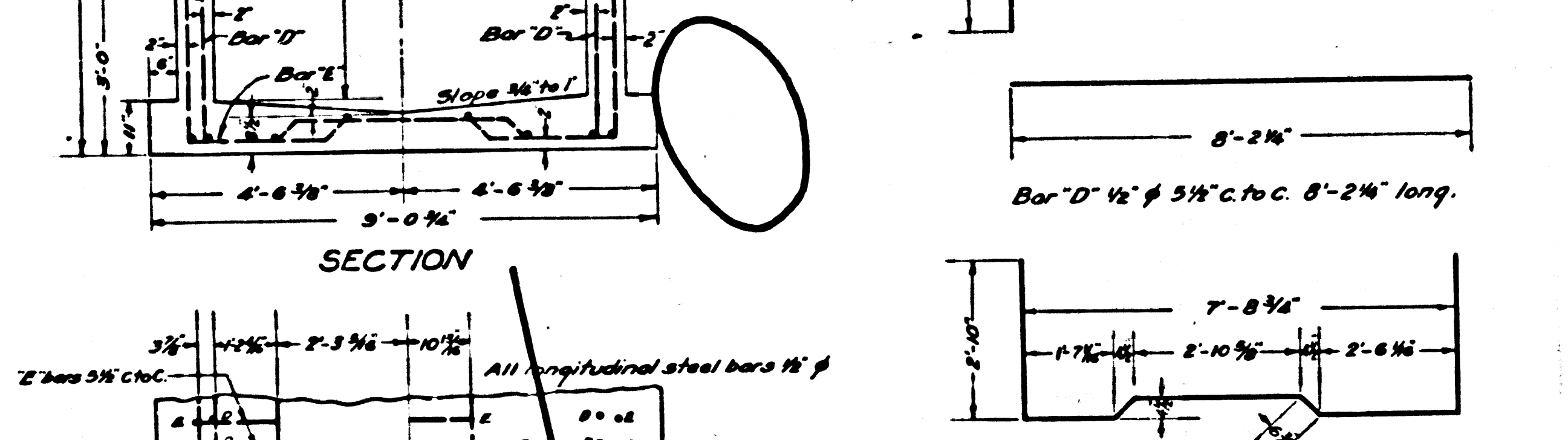
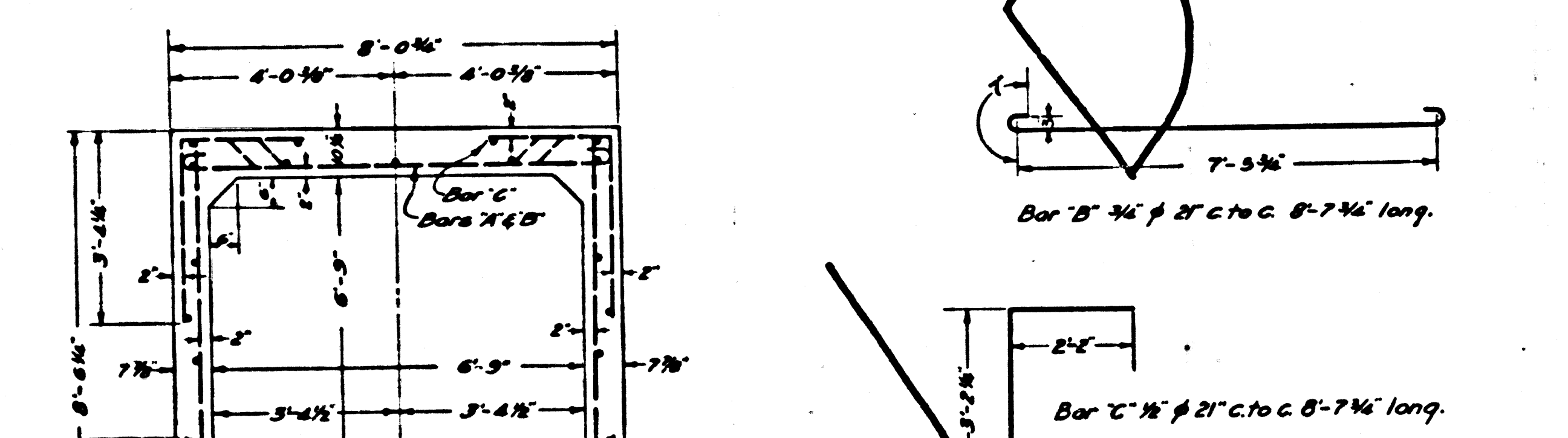
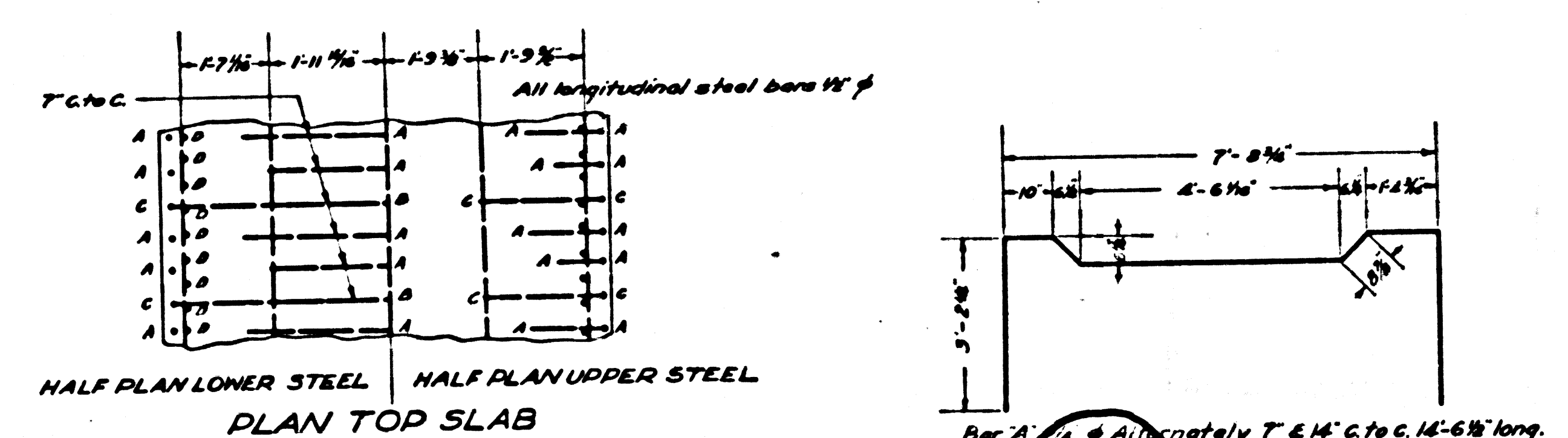
**REINFORCED CONCRETE BOX 7-6x7-6"**  
**SECTION "C"**  
 FROM STATION 39+80 TO STATION 57+95.33 OLIVE AVE. TRUNK  
 WEST ALTADENA STORM DRAIN  
 ALL CONCRETE TO BE CLASS "A"  
 SCALE 1/2"=1'



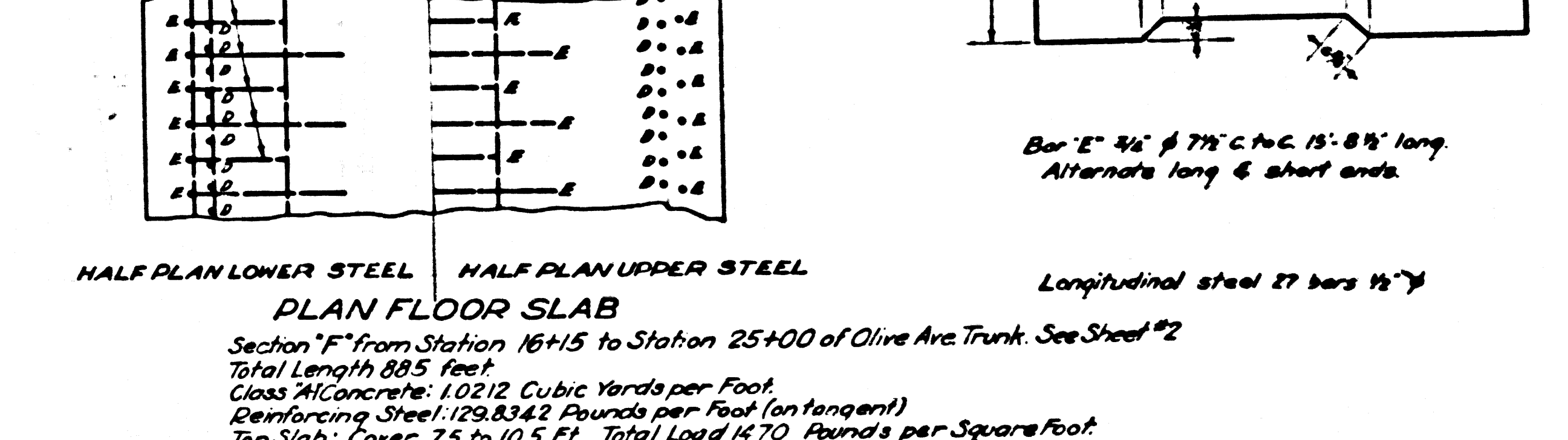
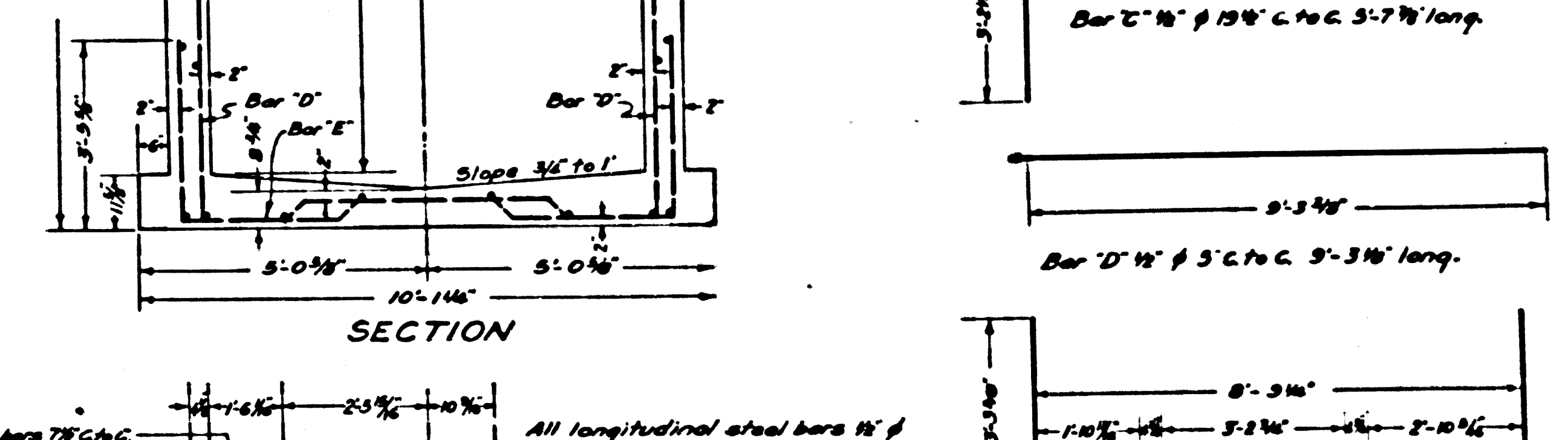
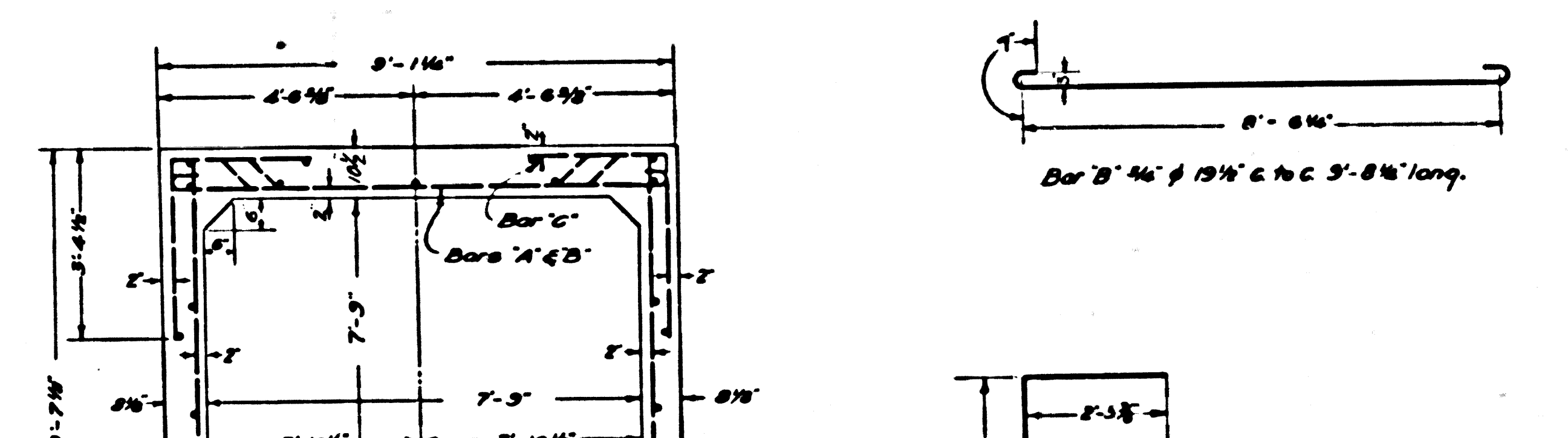
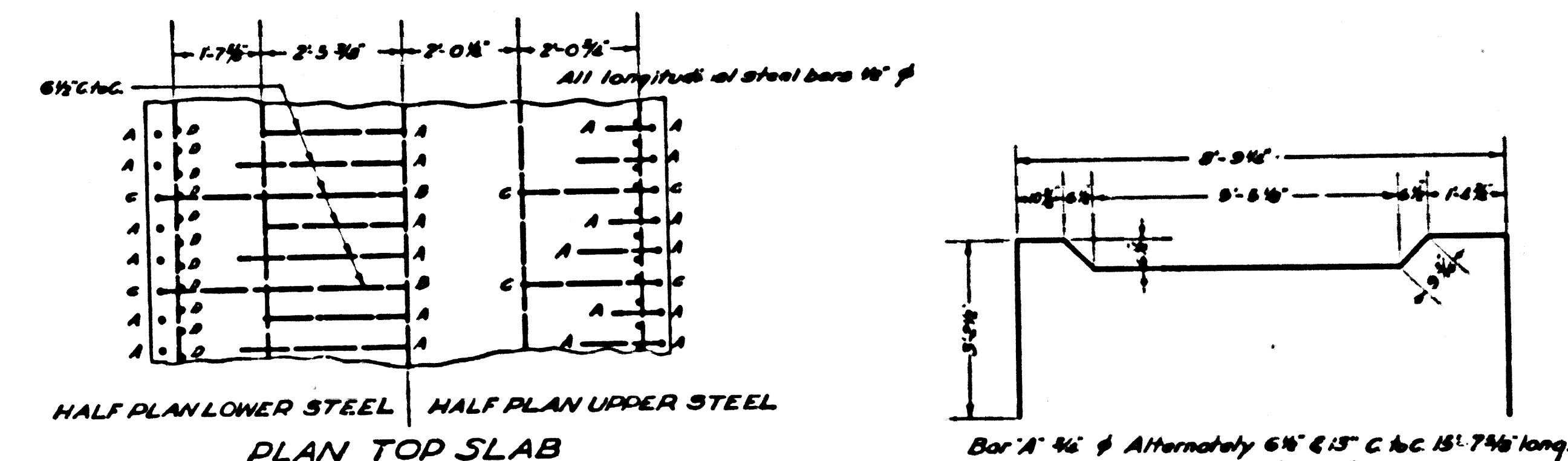
**REINFORCED CONCRETE BOX 7-6x7-6"**  
**SECTION "B"**  
 FROM STATION 58+00 TO STATION 58+95.33 OLIVE AVE. TRUNK  
 WEST ALTADENA STORM DRAIN  
 ALL CONCRETE TO BE CLASS "A"  
 SCALE 1/2"=1'



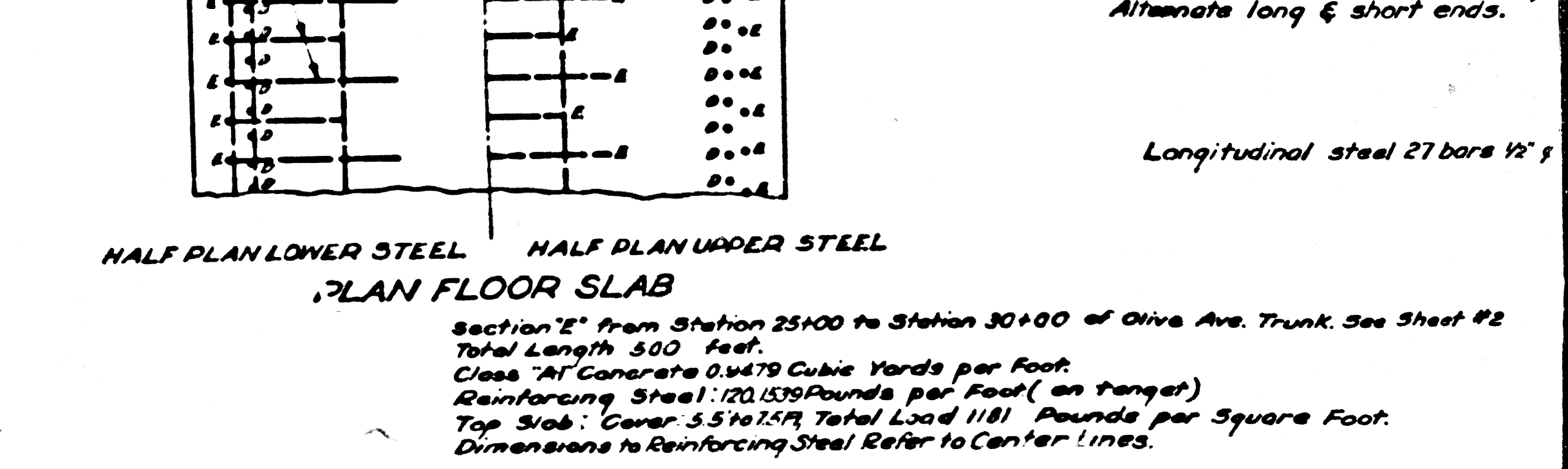
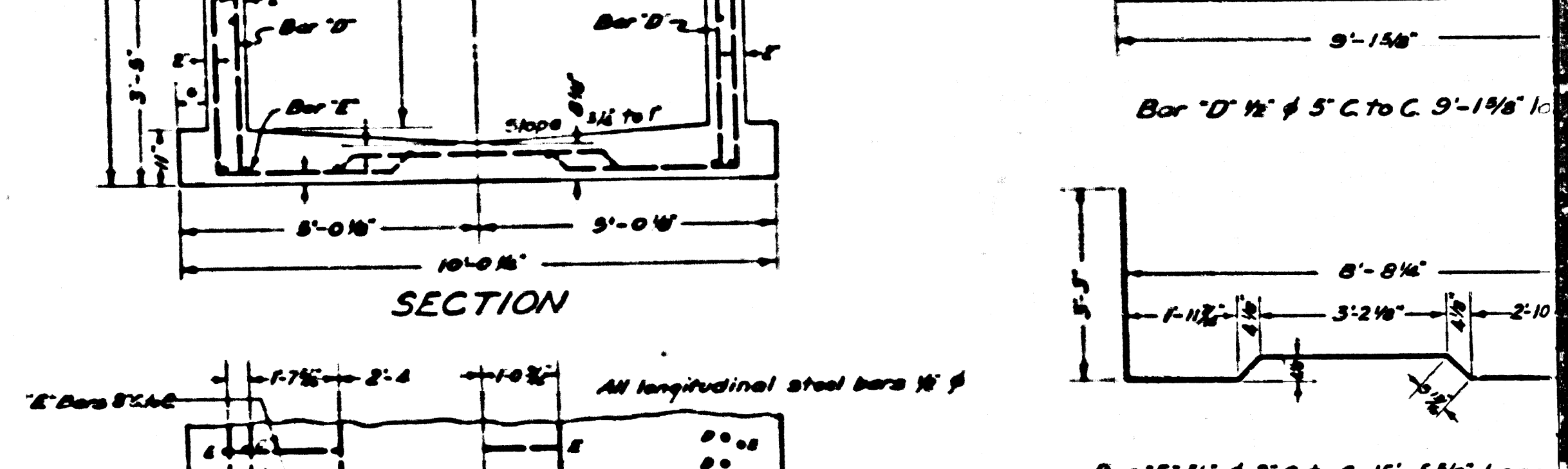
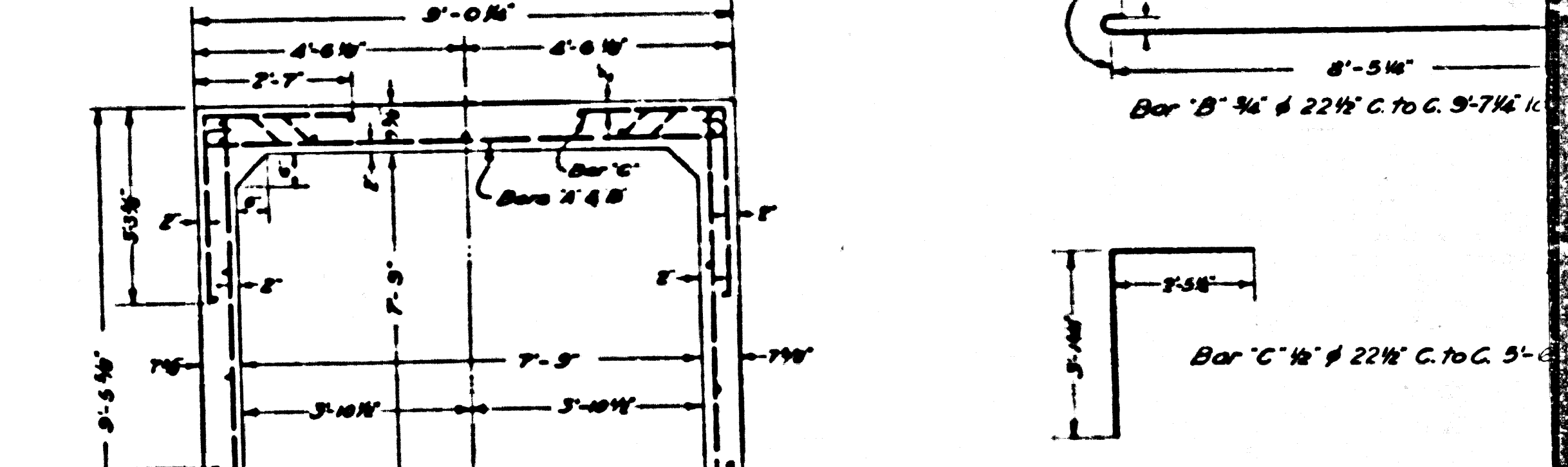
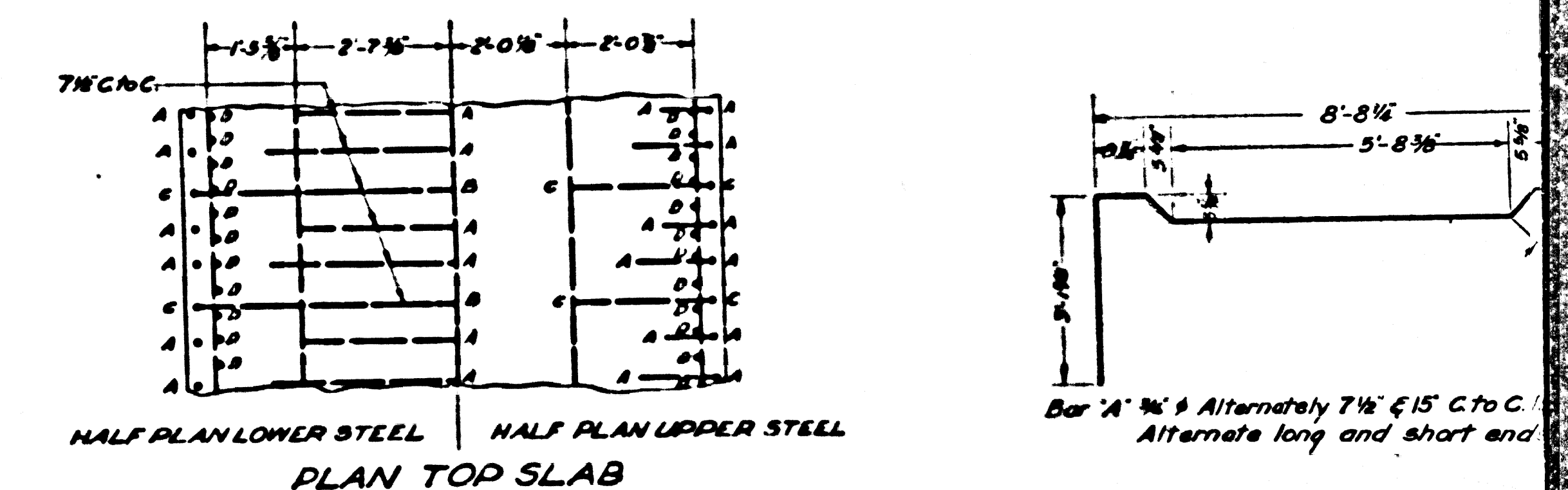
SHEET NO. 4 OF 2 SHEET 2  
CONCRETE ENGINEER/03 MAY 1953 B-1163



**REINFORCED CONCRETE BOX 6'9" x 6'9"**  
**SECTION "G"**  
FROM STATION 13+60 TO STATION 16+05 OLIVE AVE. TRUNK  
WEST ALTADENA STORM DRAIN  
ALL CONCRETE TO BE CLASS "A"  
SCALE 1/2"=1'



**REINFORCED CONCRETE BOX 7'9" x 7'9"**  
**SECTION "F"**  
FROM STATION 13+24 1/2 TO STATION 25+00 OLIVE AVE. TRUNK  
WEST ALTADENA STORM DRAIN  
ALL CONCRETE TO BE CLASS "A"  
SCALE 1/2"=1'



**REINFORCED CONCRETE BOX 7'9" x 7'9"**  
**SECTION "E"**  
FROM STATION 25+00 TO STATION 30+00 OLIVE AVE. TRUNK  
WEST ALTADENA STORM DRAIN  
ALL CONCRETE TO BE CLASS "A"  
SCALE 1/2"=1'

CS B-1163-4  
A3 OF A3

SHEET NO. 4 OF 2 SHEET 2  
CONCRETE ENGINEER/03 MAY 1953 B-1163