

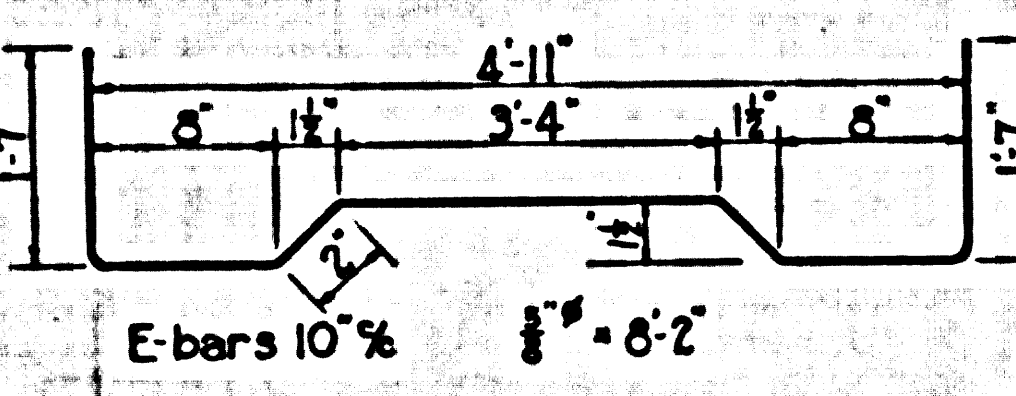
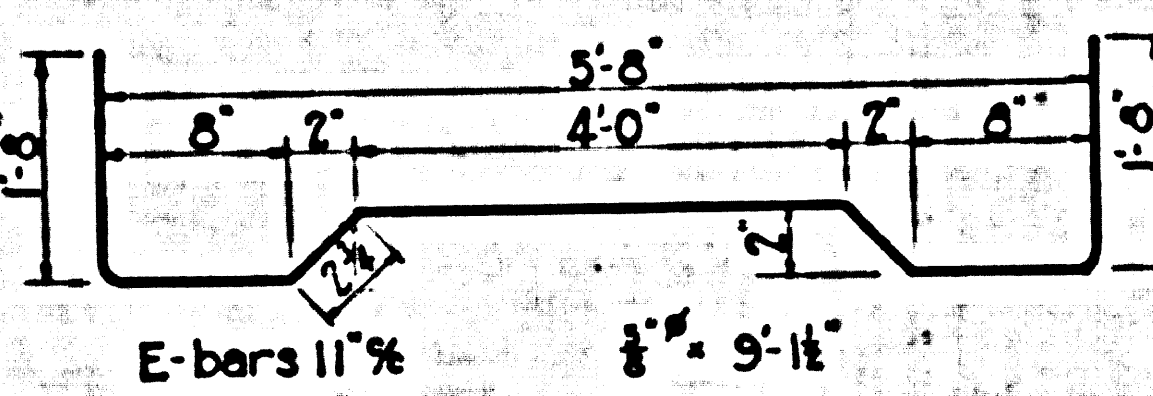
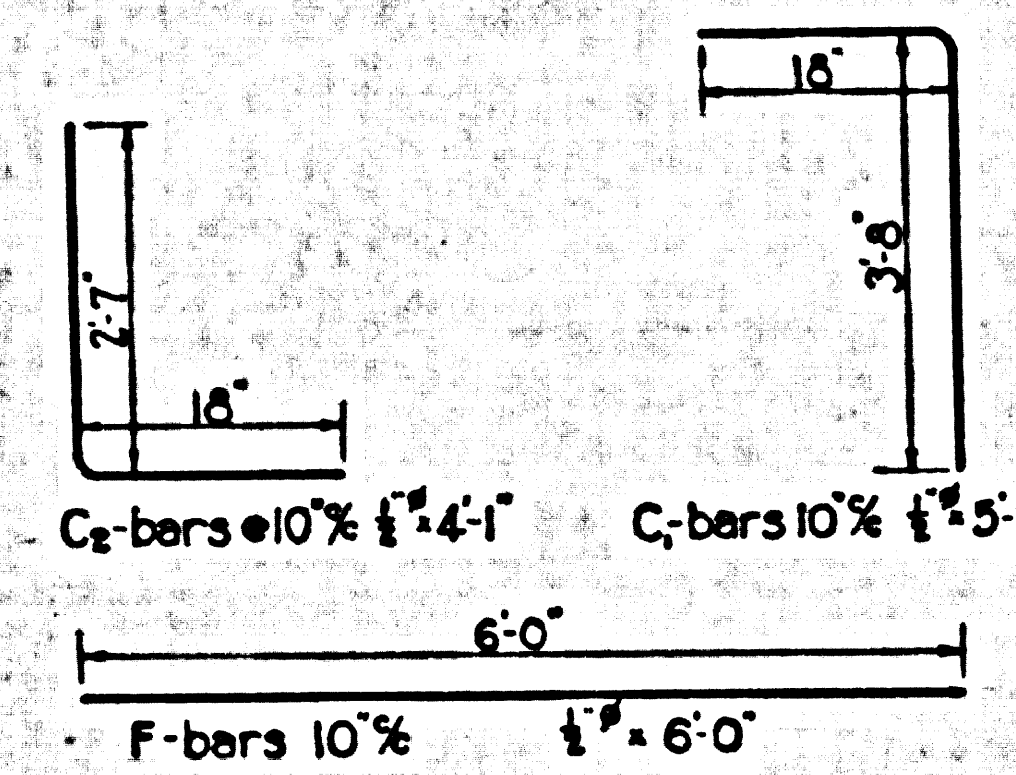
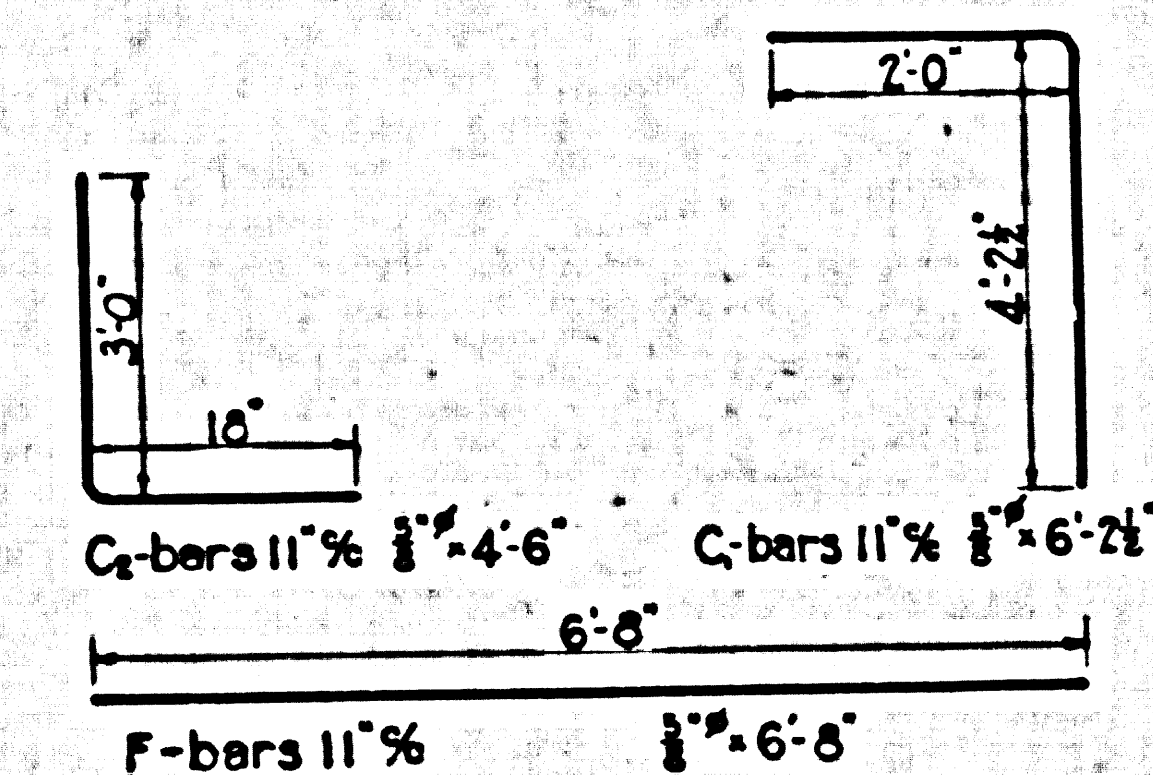
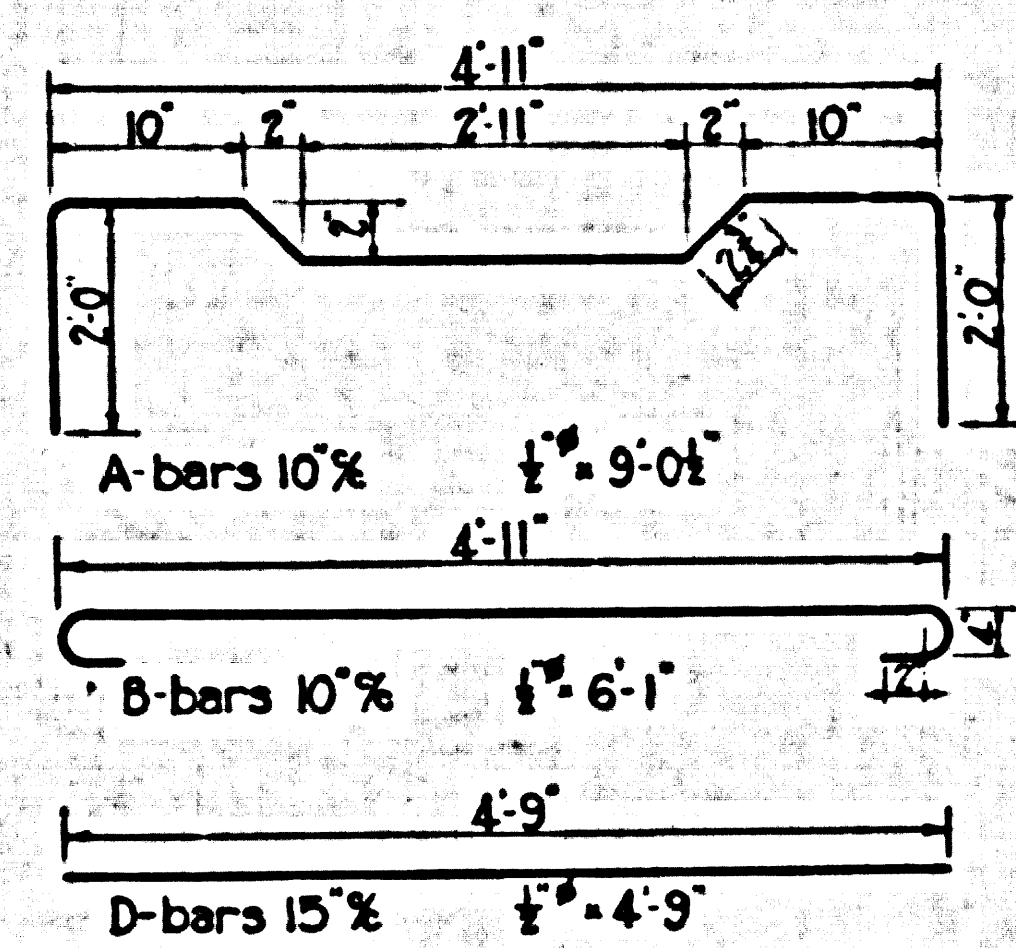
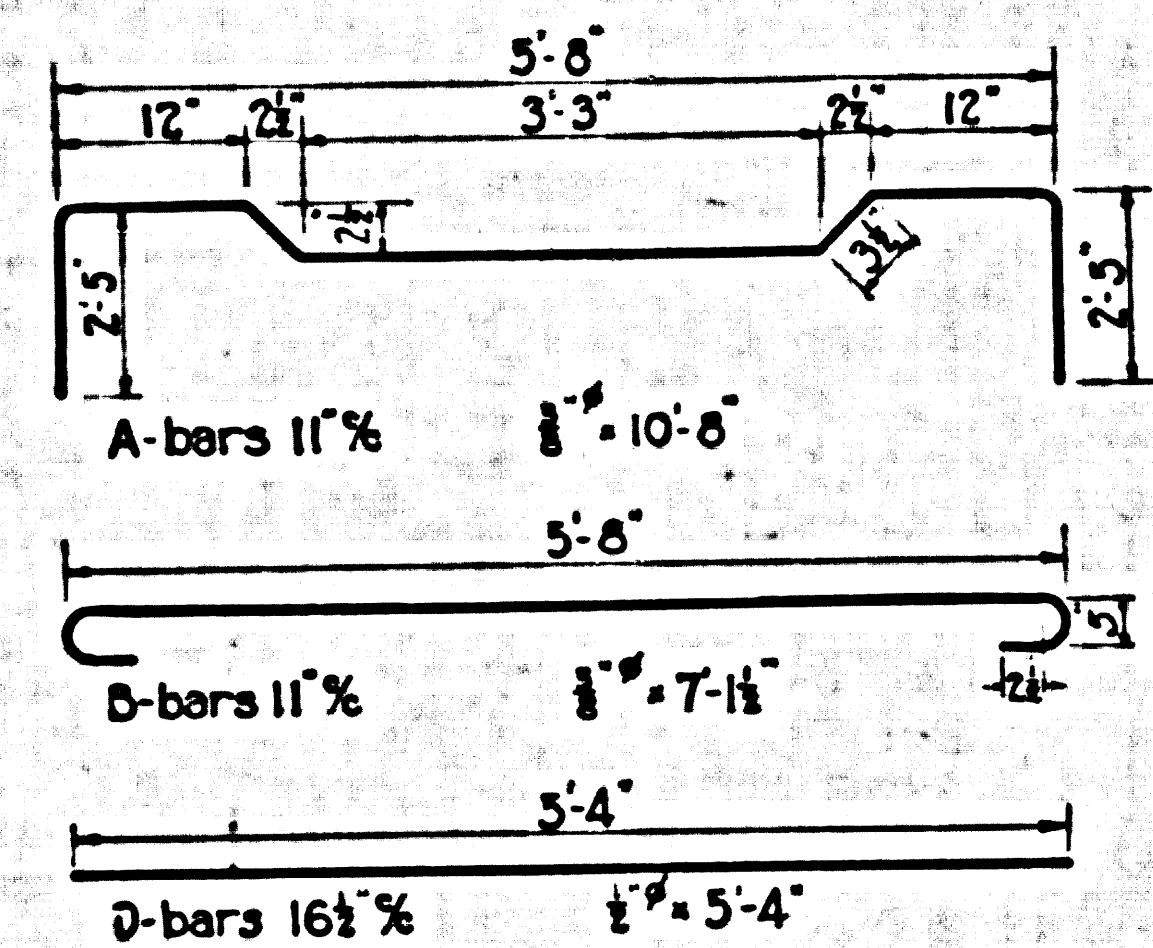
Omit this

← Print this

Trim to this line

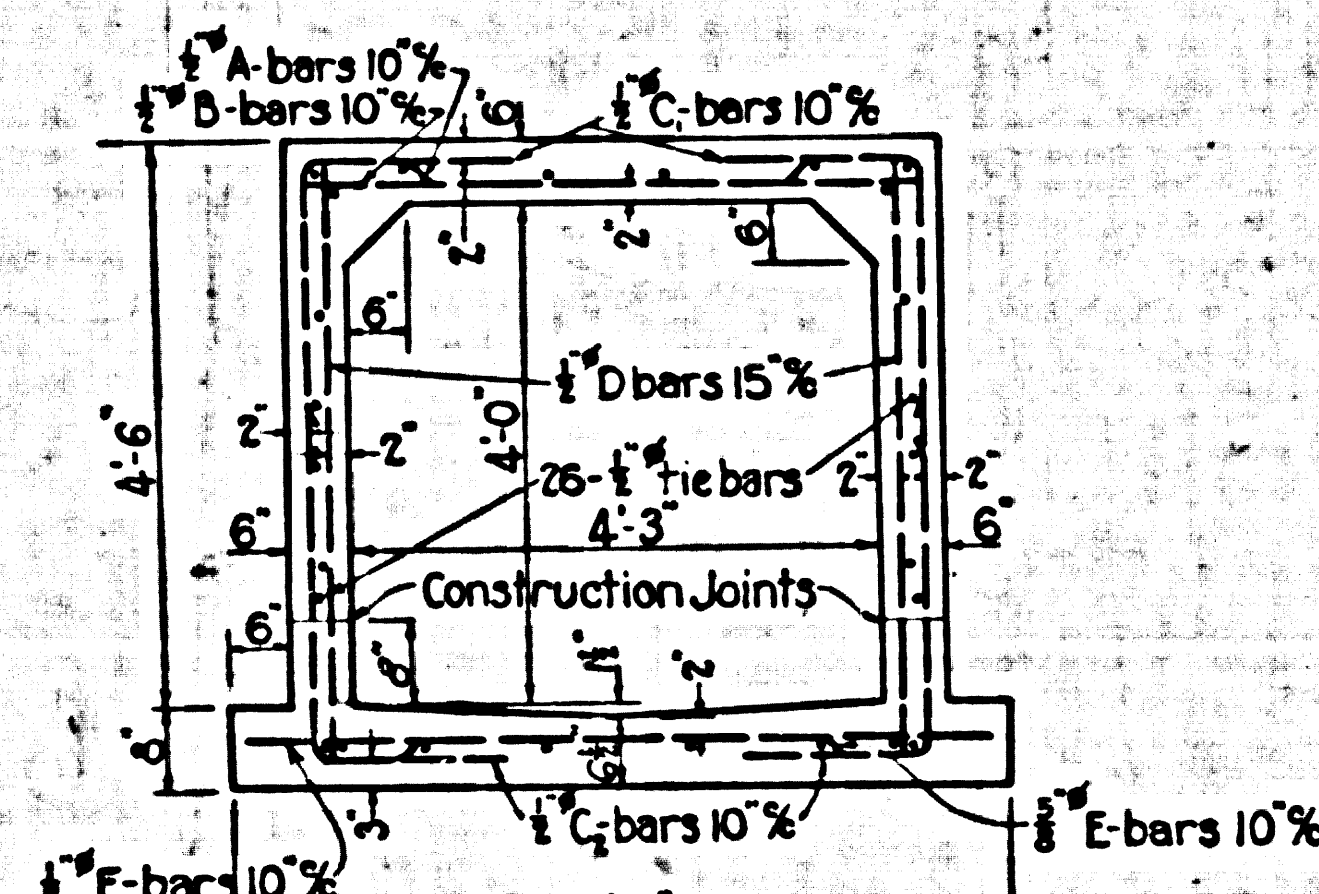
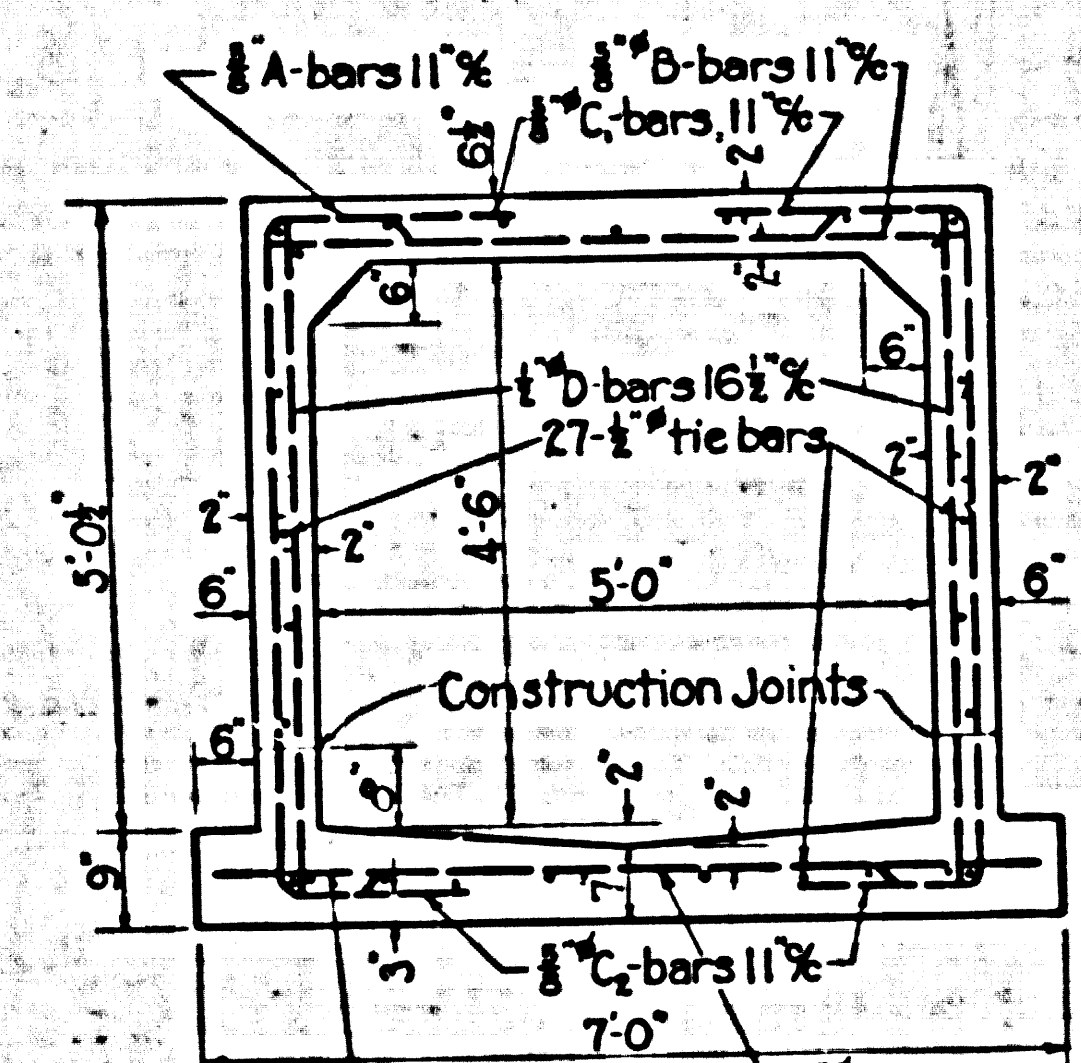
SEE SHEET 10 OF 10 SHEETS

SHEET NO. 10 OF 10 SHEETS



27 - 1/2" tie bars required

26 - 1/2" tie bars required

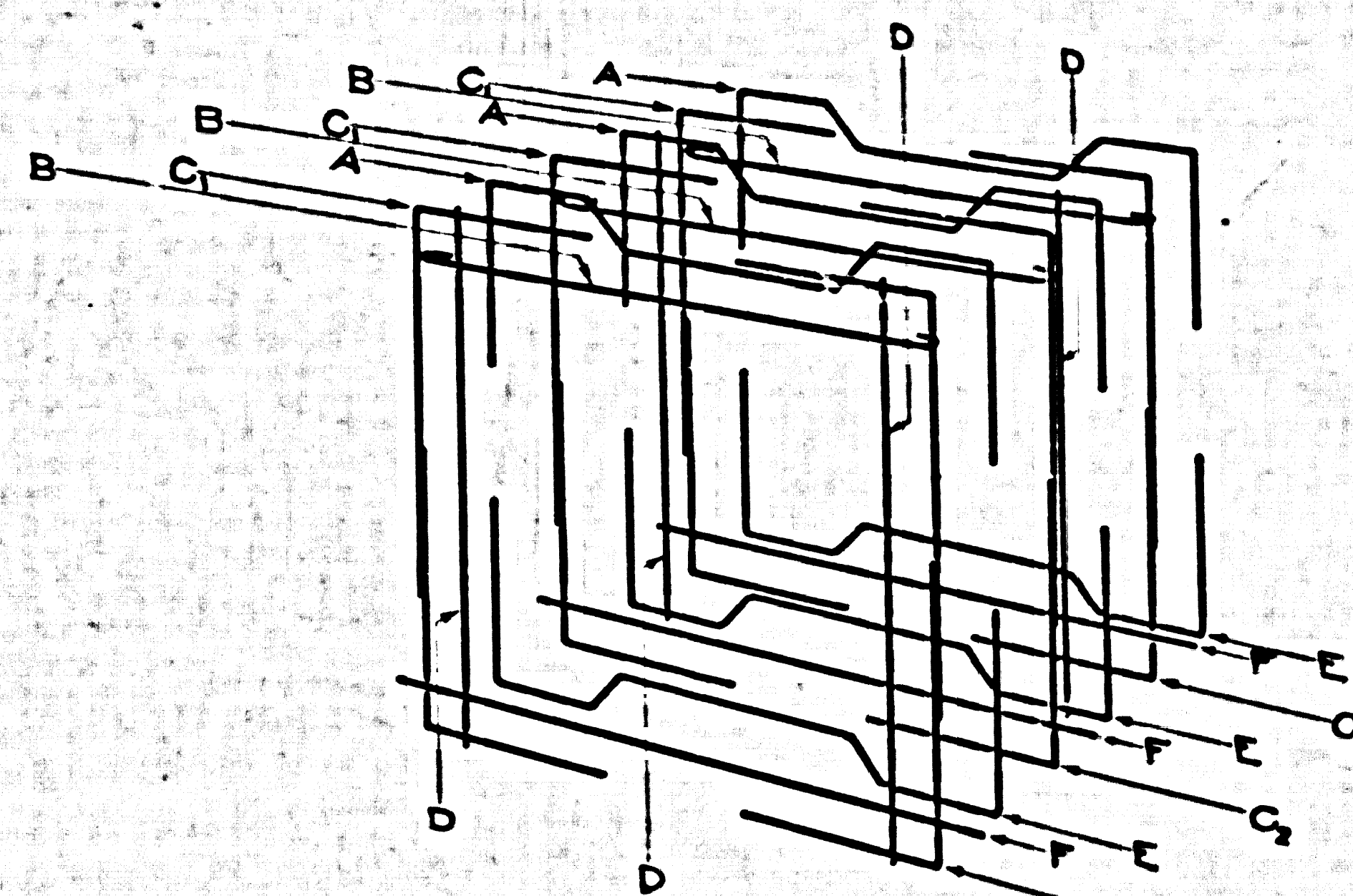


Top Slab Cover 7" Truck Loading
 Concrete 0.48 cuyd. per lin. ft.
 Reinf. Steel 86 lbs. per lin. ft.

Top Slab Cover 2" Truck Loading
 Concrete 0.40 cuyd. per lin. ft.
 Reinf. Steel 64 lbs. per lin. ft.

SECTION L
 REINF. CONC. BOX 5'0" x 4'6"
 YUKON AVE. LINE
 FROM STATION 102+70 TO STA. 109+30
 Scale 1/2" = 1'-0"

SECTION M
 REINF. CONC. BOX 4'3" x 4'0"
 YUKON AVE. LINE
 FROM STATION 109+40 TO STA. 116+09.82
 Scale 1/2" = 1'-0"



ARRANGEMENT OF REINFORCING BARS
SINGLE BOX SECTIONS
 Tie bars not shown

NOTES:

All Reinforced Concrete shall be Class A-1 Concrete.

Dimensions for depth of Reinforcing Steel are from face of concrete to center of bar.

Reinforcing bars shall be round, deformed bars of intermediate grade, billet steel or rail steel, unless otherwise specified, and at all splices shall be lapped 36 bar diameters.

Weep holes 3/4 inch in diameter, spaced not more than 5 feet each way, shall be placed in each sidewall of box section unless otherwise specified.

LENNOX
DRAINAGE SYSTEM
 OF THE COUNTY OF LOS ANGELES, CALIFORNIA

DETAILS OF BOX SECTIONS
 SECTIONS G, H, I, J, K, L, M
 FOR
YUKON AVENUE LINE
 SHEET 10 OF 10 SHEETS

SCALES AS SHOWN JUNE 1937
 ALFRED JONES COUNTY SURVEYOR
 RECOMMENDED *[Signature]* APPROVED *[Signature]*

REFERENCE	DESIGNED	J. A. Pedigo L. B. Knox	JUNE 1937
	TRACED	J. A. Pedigo	JUNE 1937
	CHECKED	L. B. Knox J. A. Pedigo	JUNE 1937

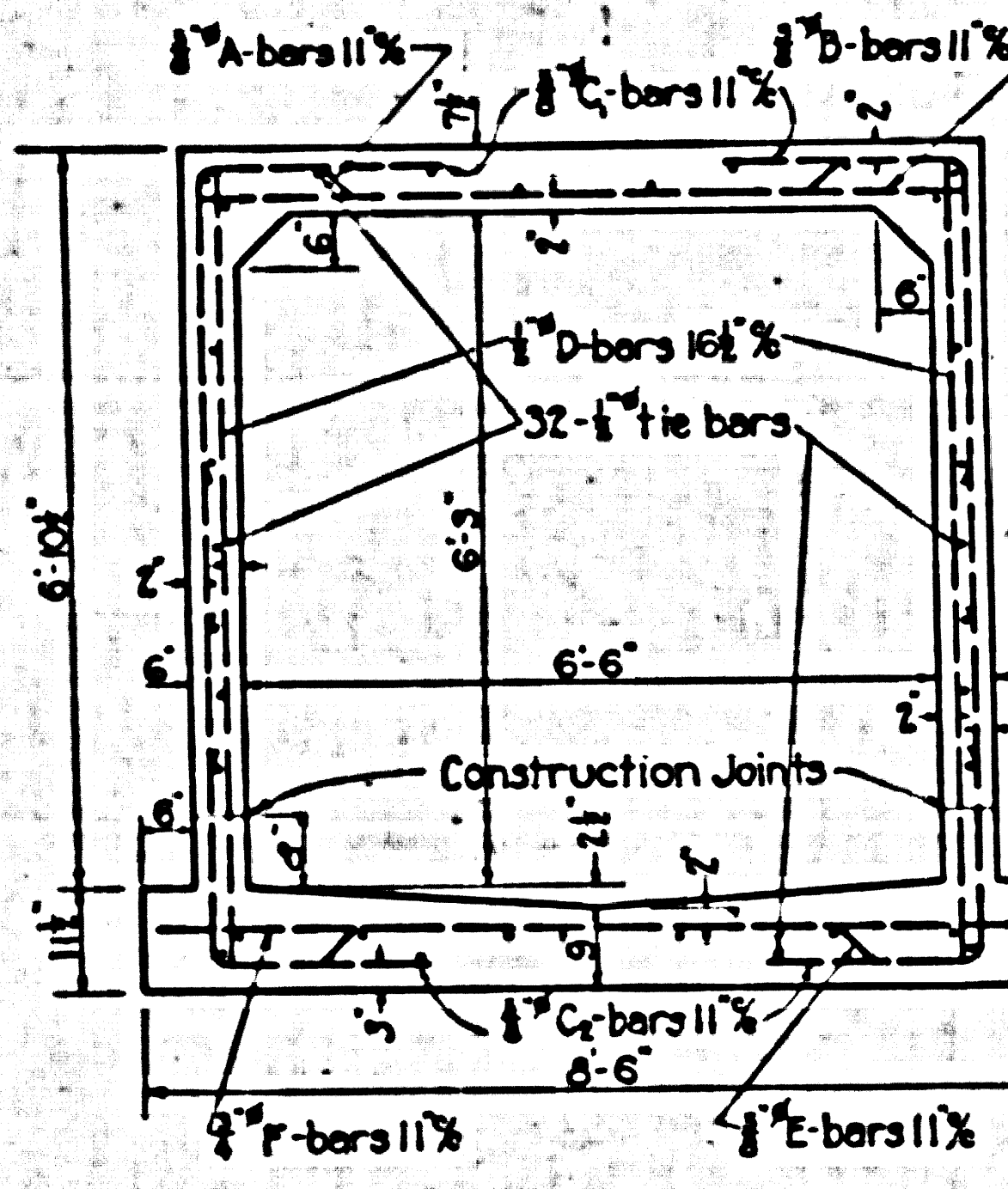
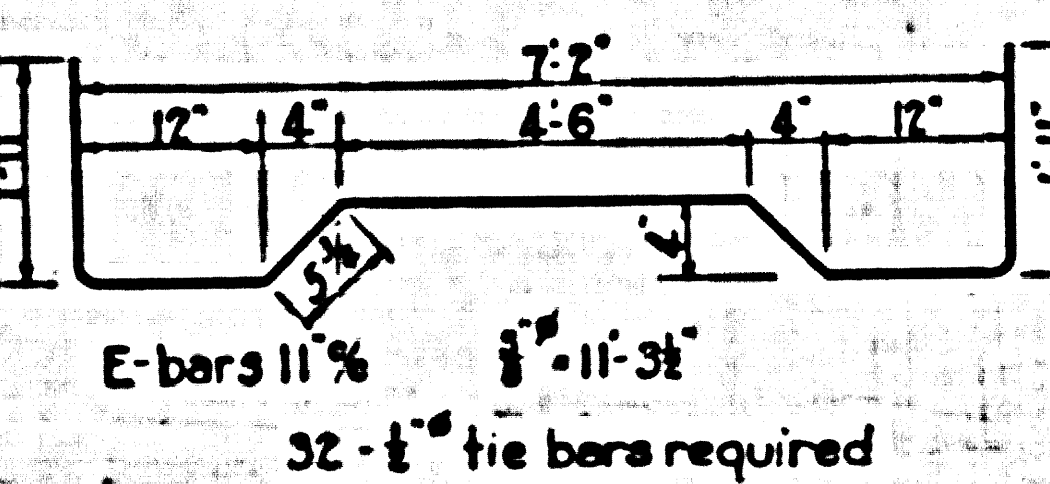
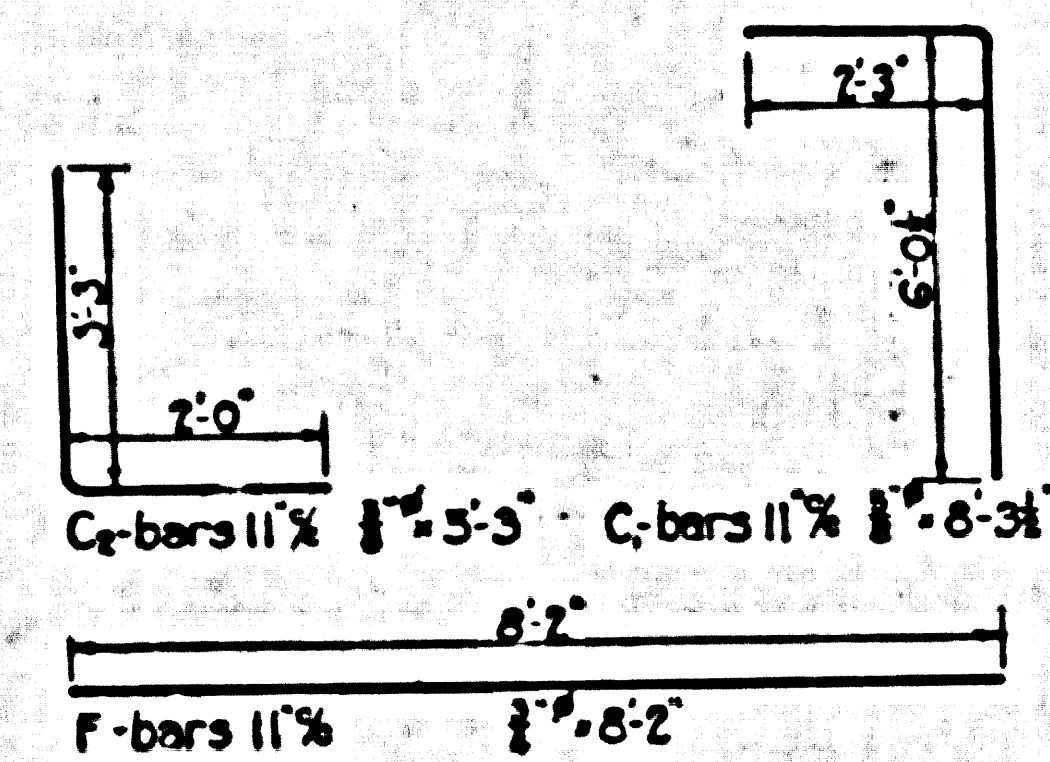
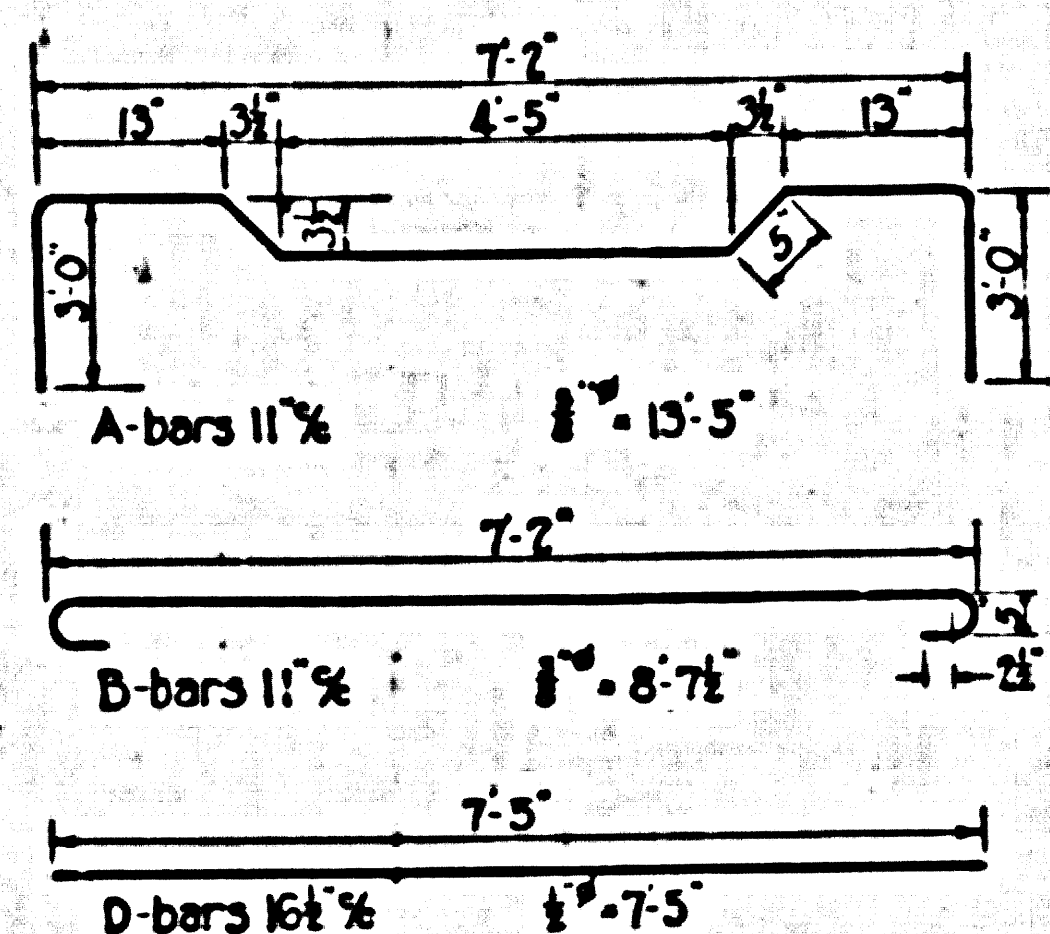
CSB-1164-10
 A 1 OF A 2

10

Trim to this line

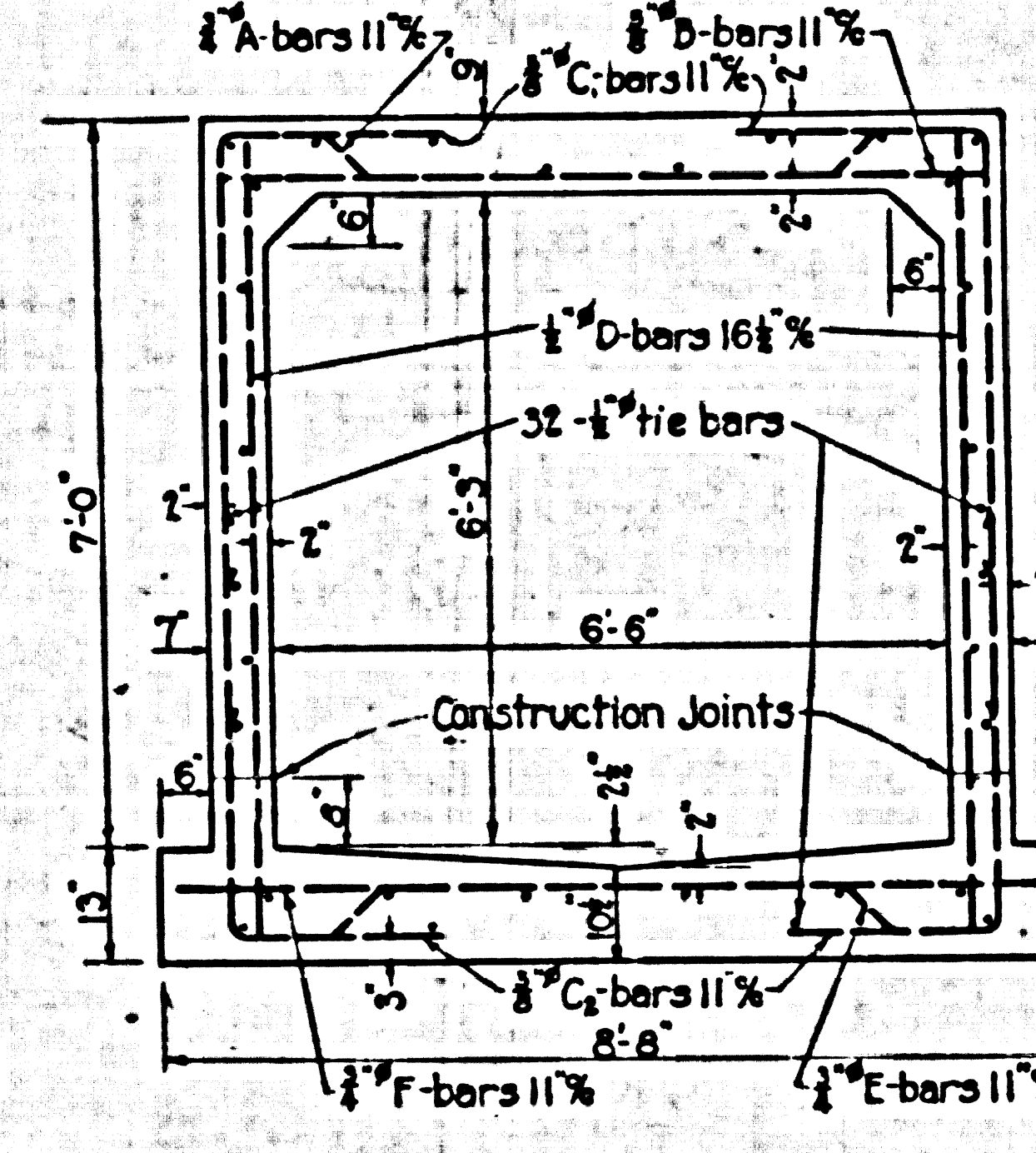
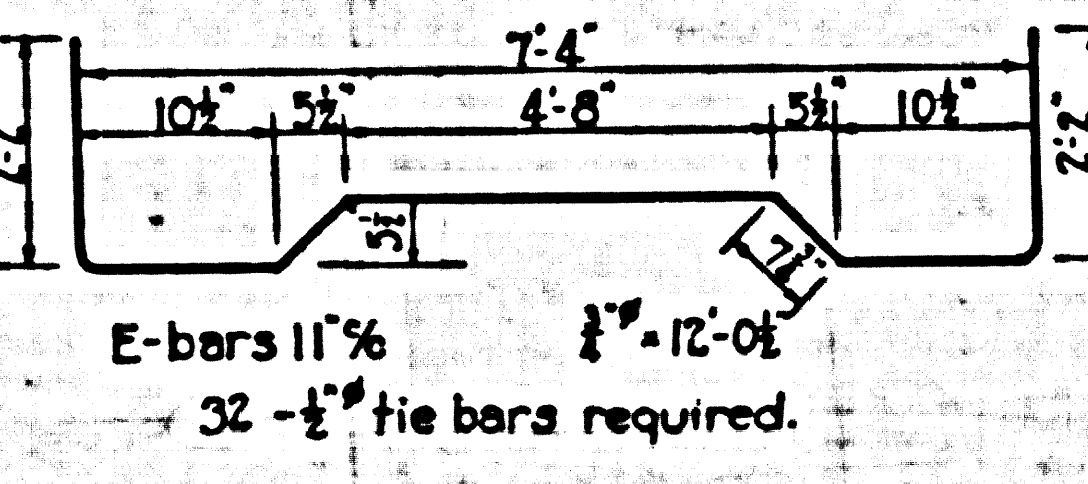
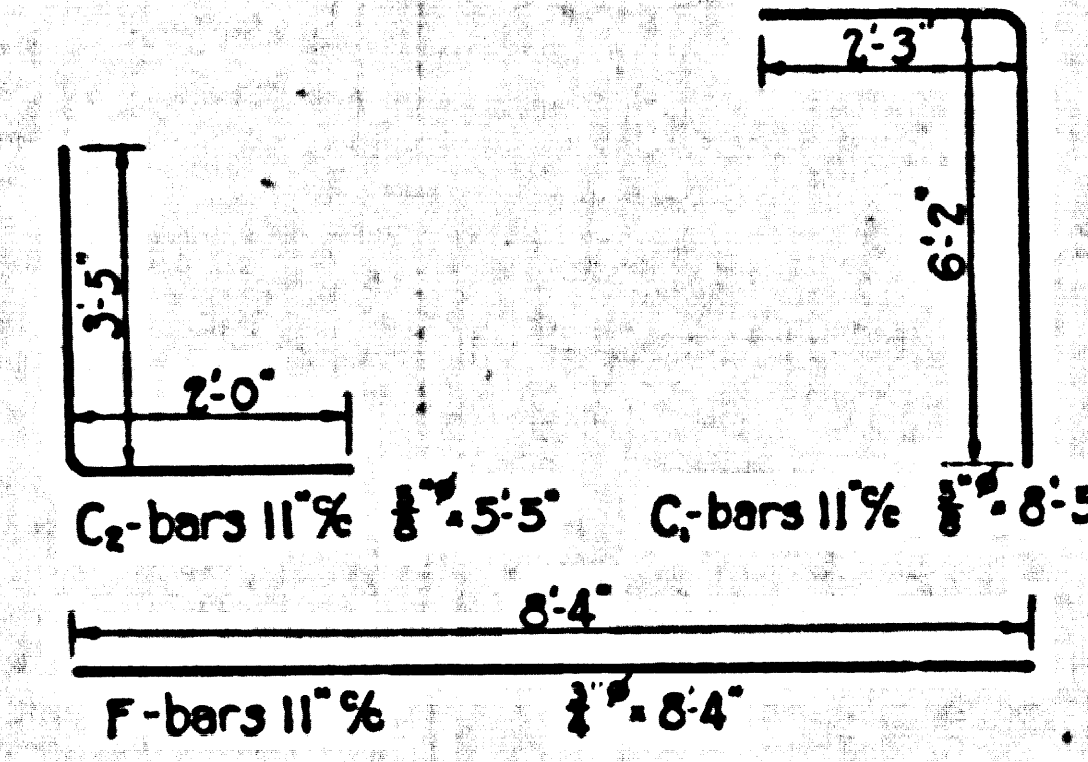
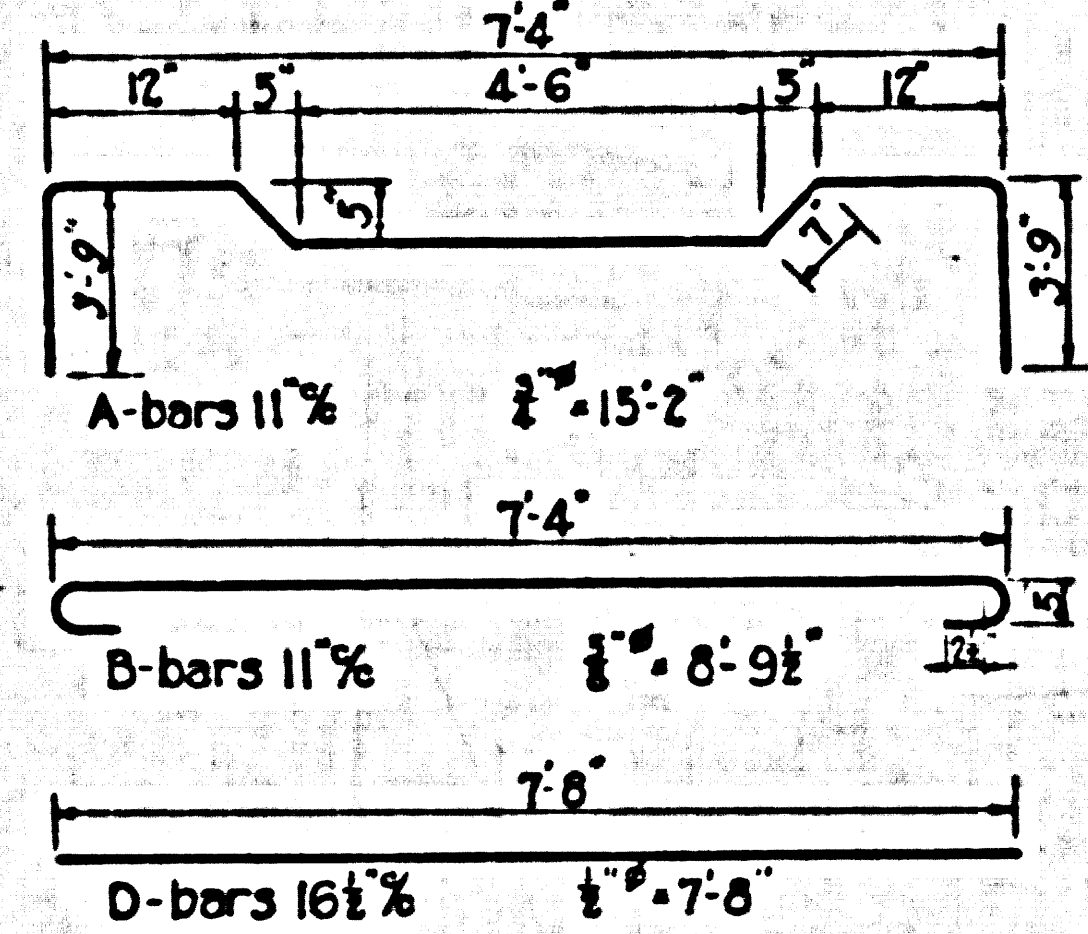
102+60

Trim to this line



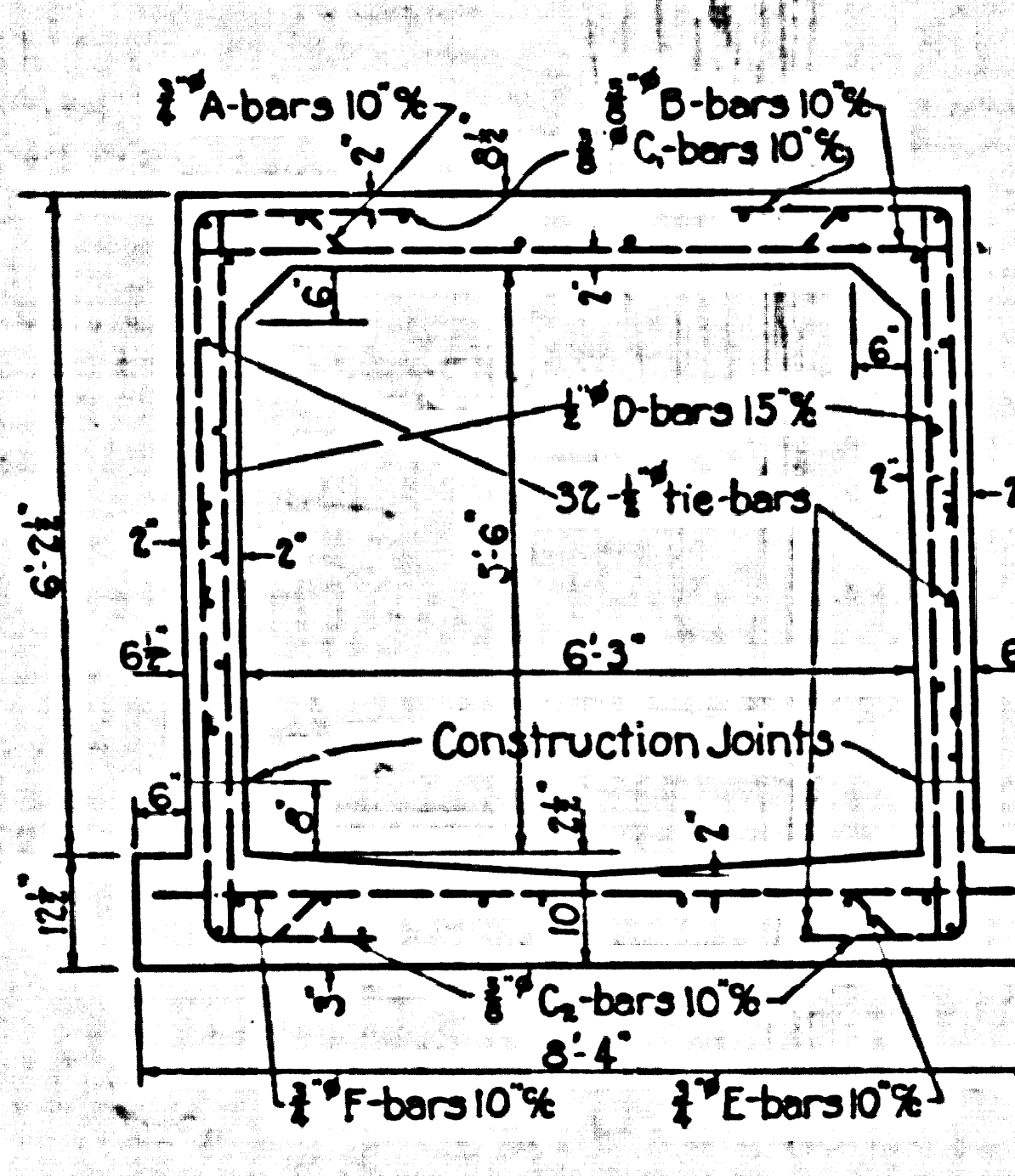
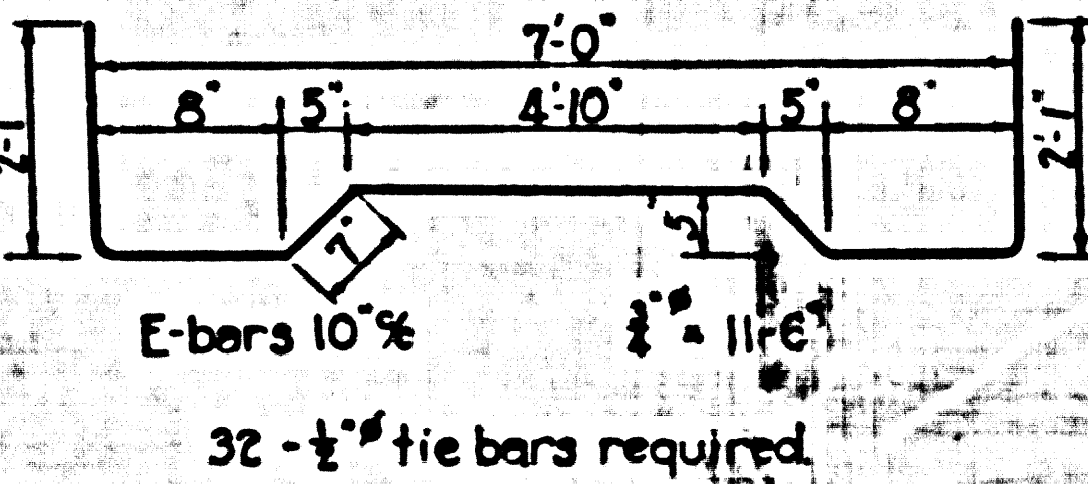
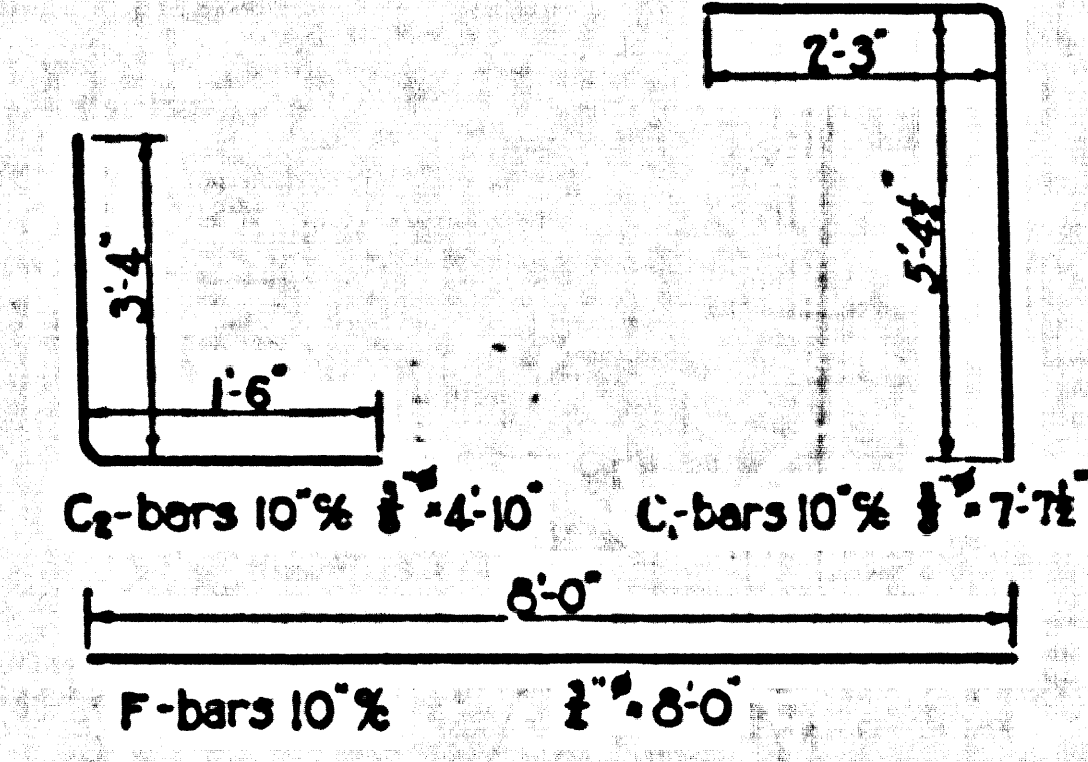
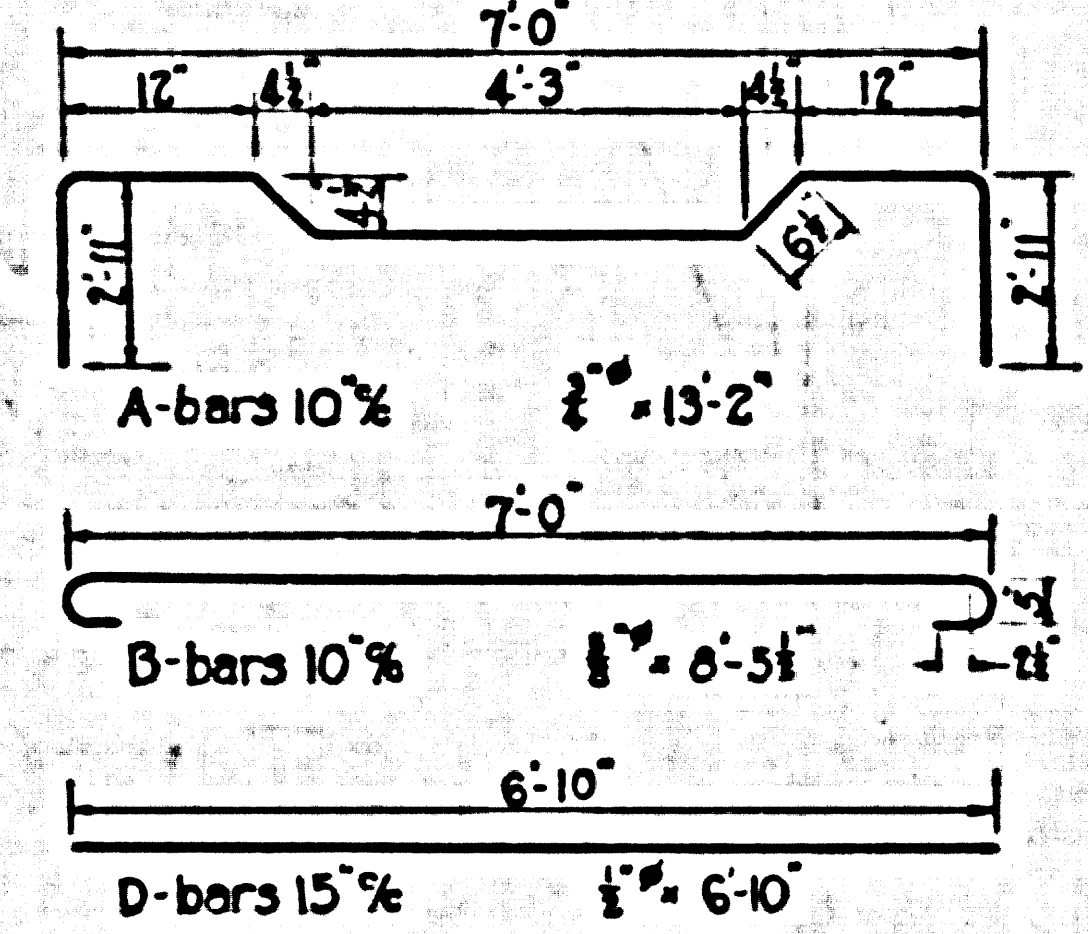
Top Slab Cover 6" : Truck Loading
 Concrete 0.69 cu.yd per lin.ft.
 Reinf. Steel 111 lbs. per lin.ft.

SECTION G
 REINF. CONC. BOX 6'-6" x 6'-3"
 YUKON AVE. LINE
 FROM STATION 48+50 TO STA. 74+00
 Scale 1/2" = 1'-0"



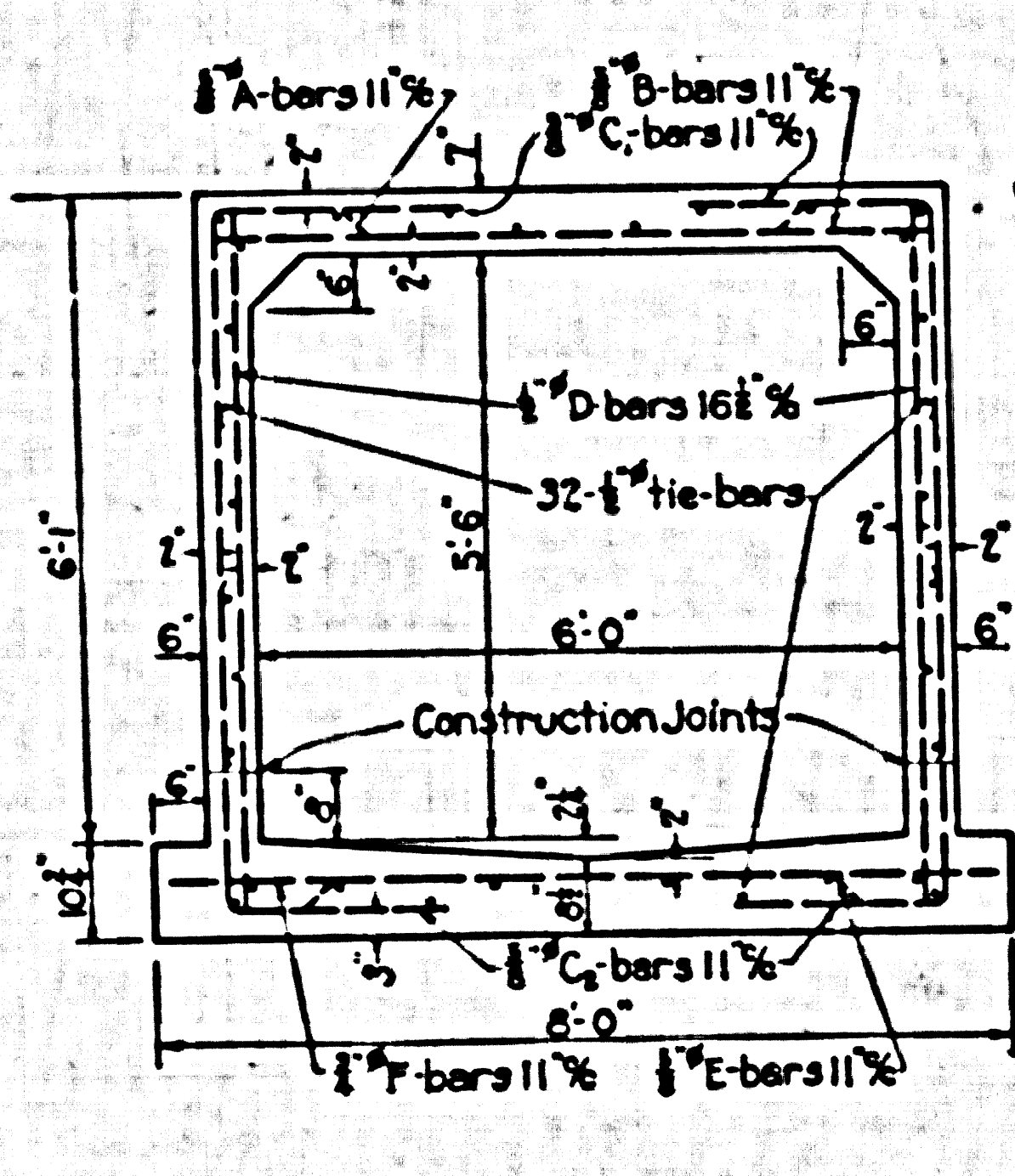
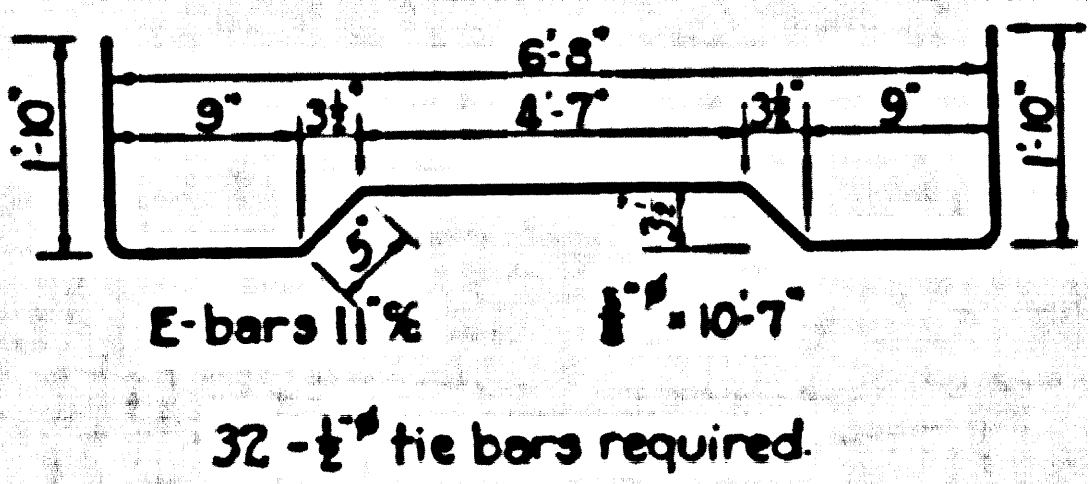
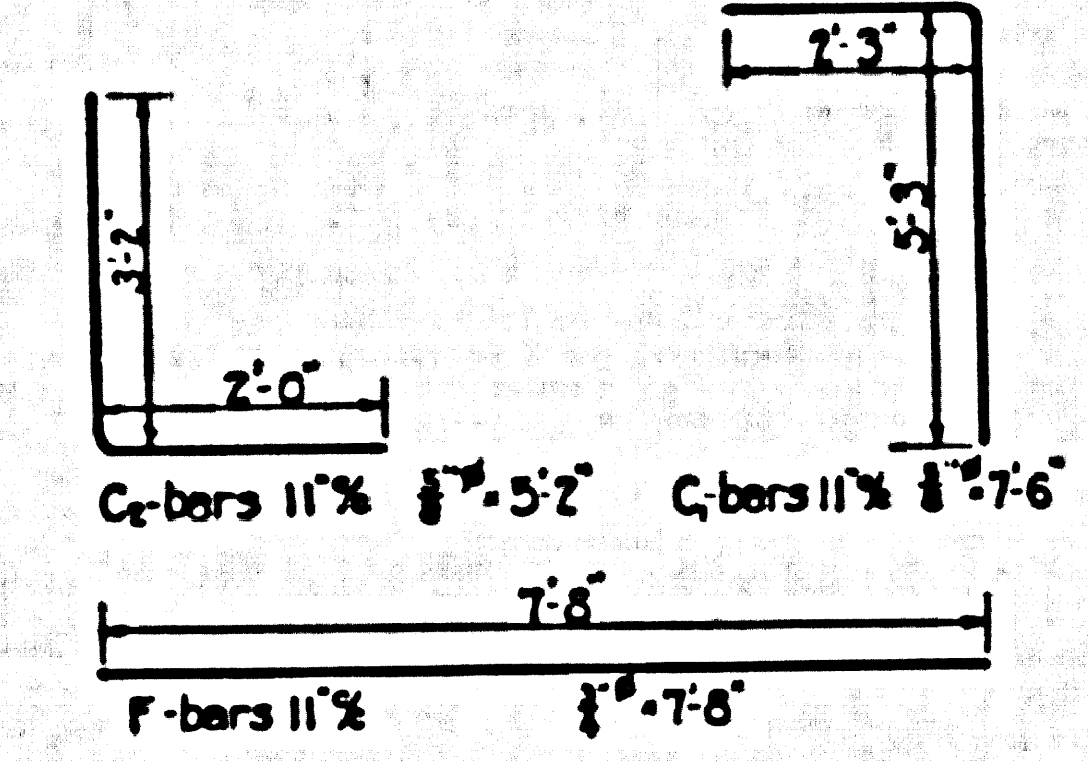
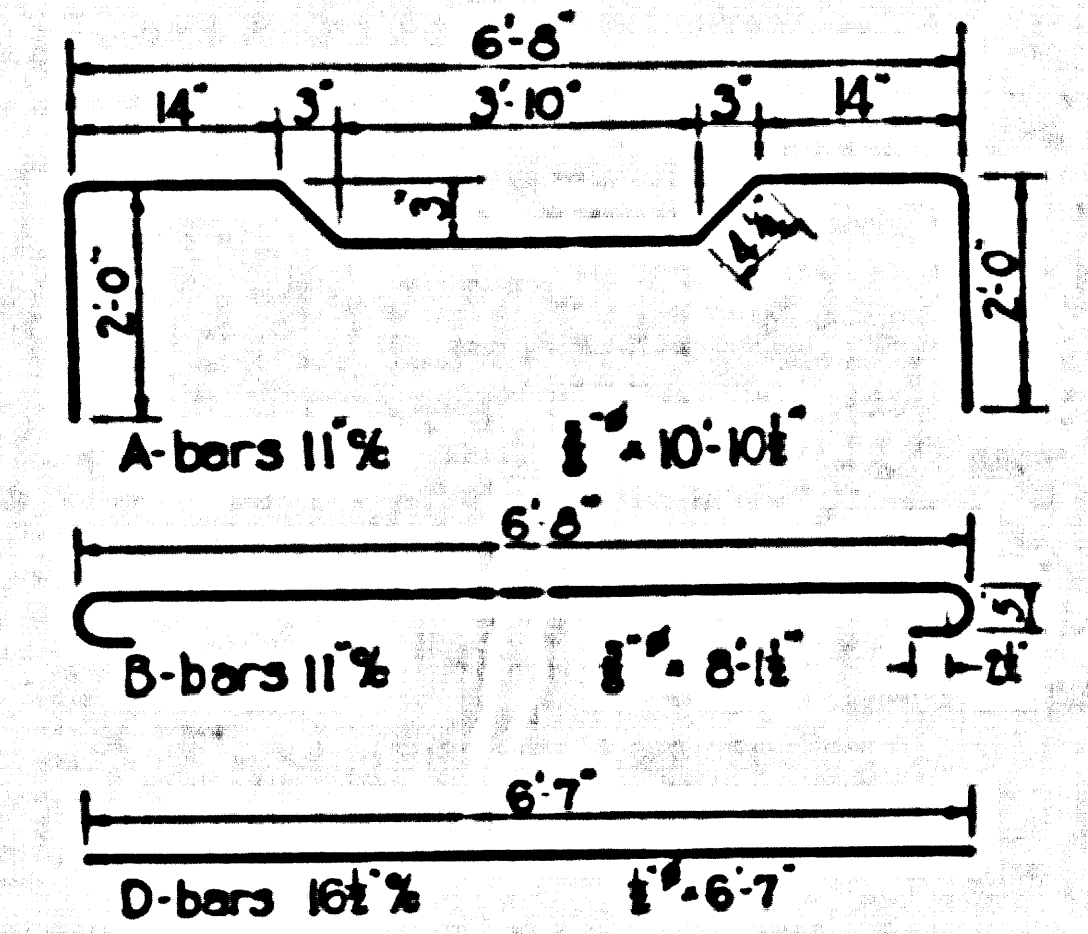
Top Slab Cover 11" : Truck Loading
 Concrete 0.81 cu.yd per lin.ft.
 Reinf. Steel 129 lbs. per lin.ft.

SECTION H
 REINF. CONC. BOX 6'-6" x 6'-3"
 YUKON AVE. LINE
 FROM STATION 74+00 TO STA. 78+10
 Scale 1/2" = 1'-0"



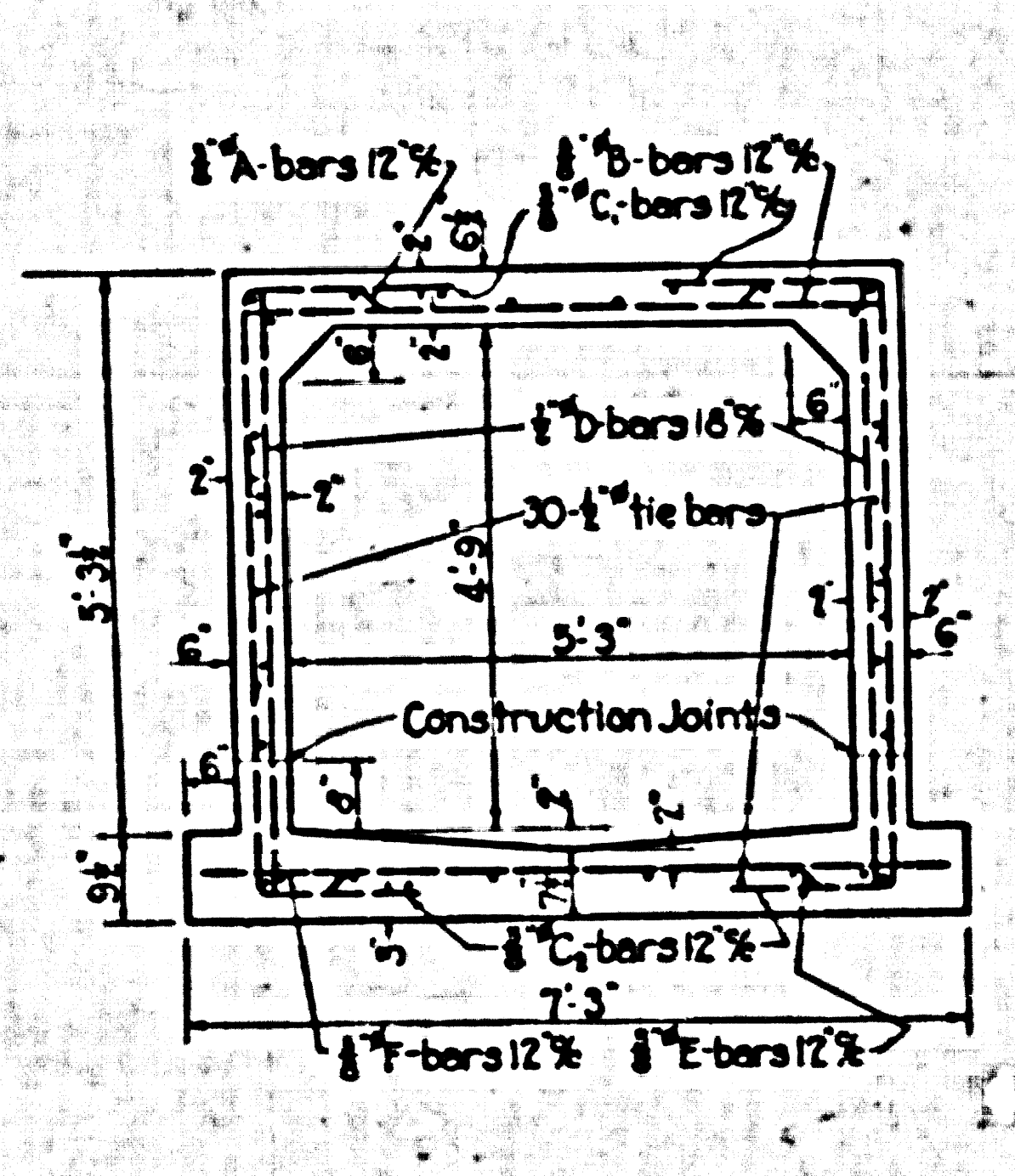
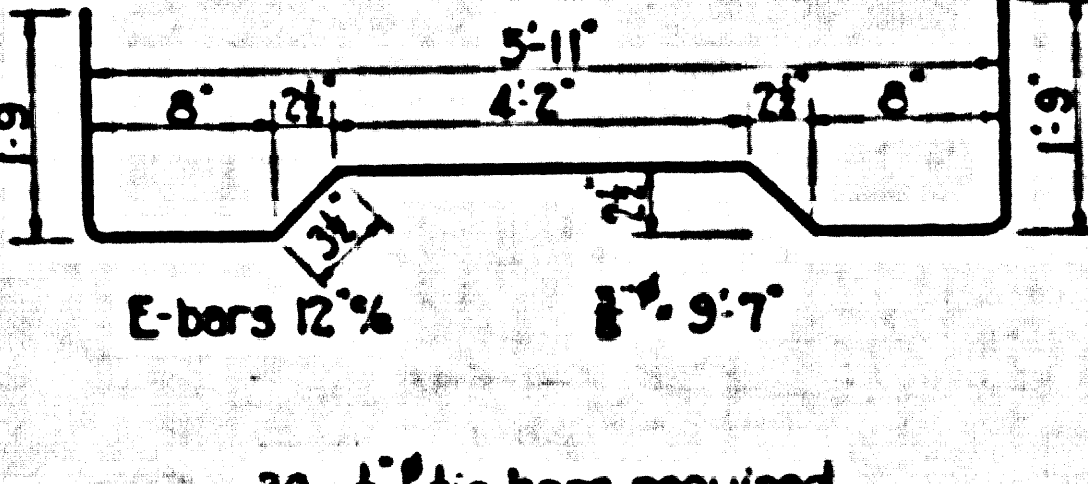
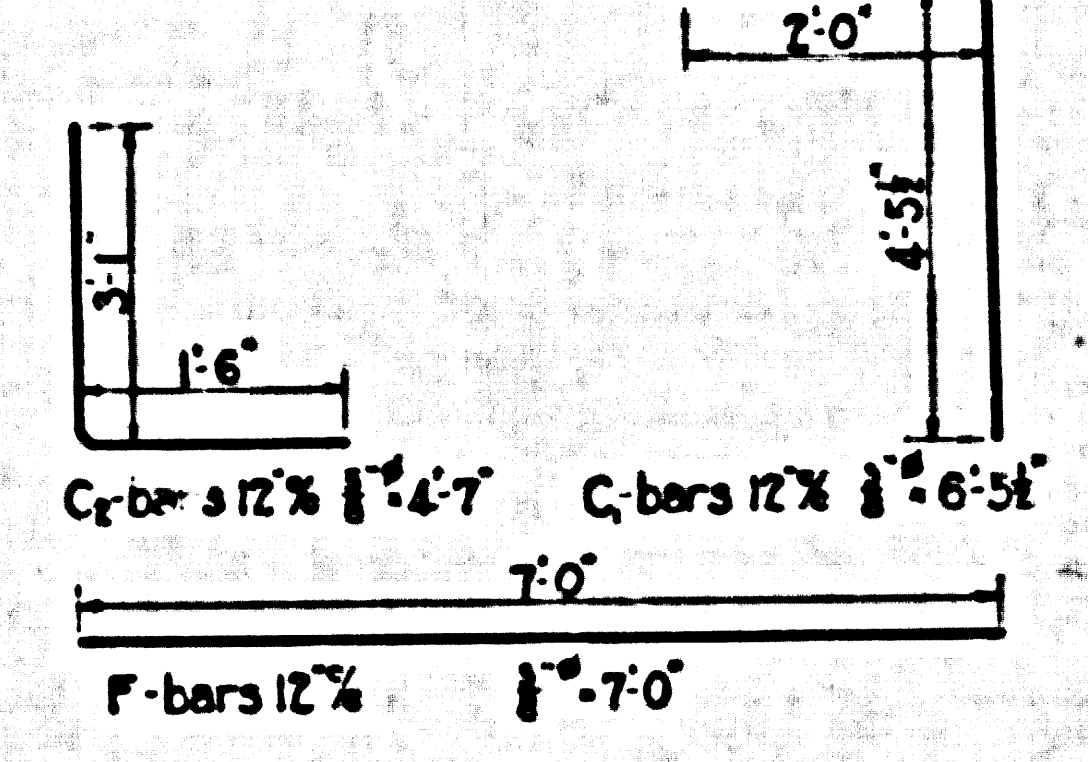
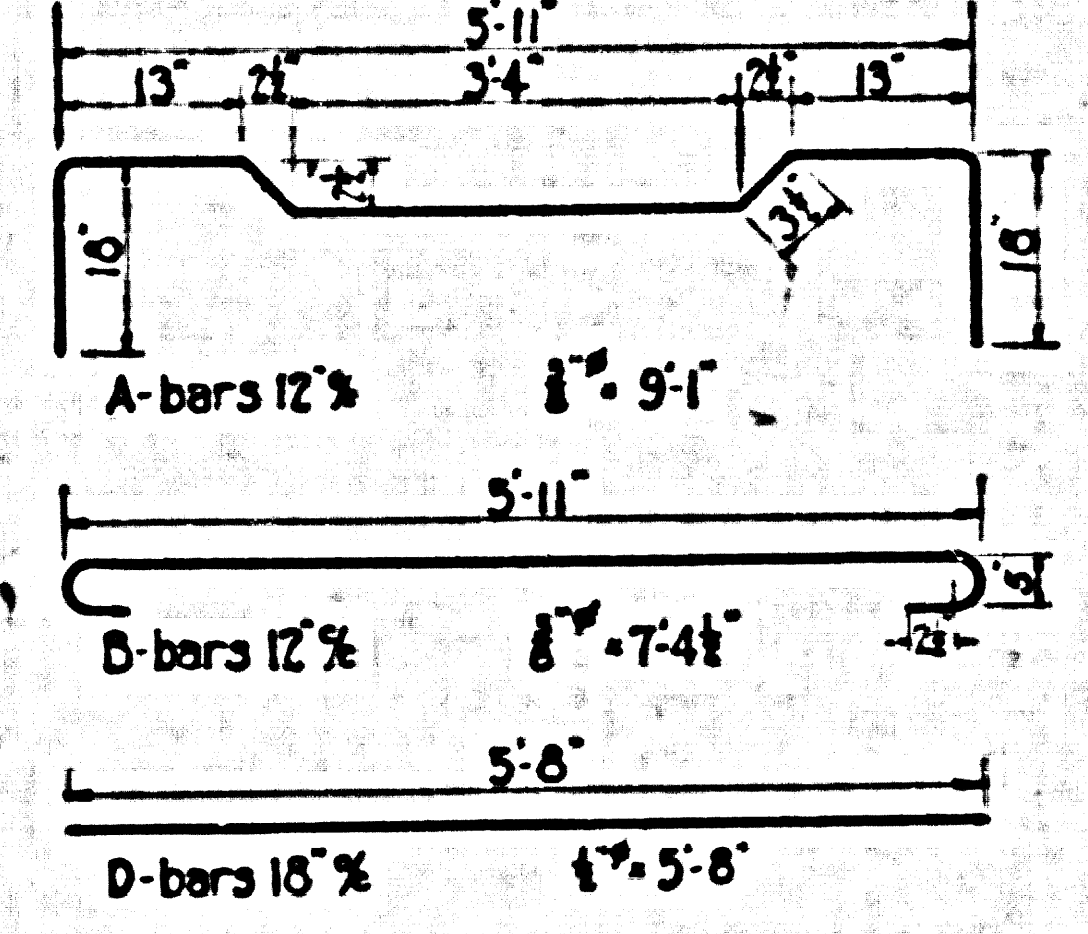
Top Slab Cover 11" : Truck Loading
 Concrete 0.72 cu.yd per lin.ft.
 Reinf. Steel 129 lbs. per lin.ft.

SECTION I
 REINF. CONC. BOX 6'-3" x 5'-6"
 YUKON AVE. LINE
 FROM STATION 78+20 TO STA. 89+50
 Scale 1/2" = 1'-0"



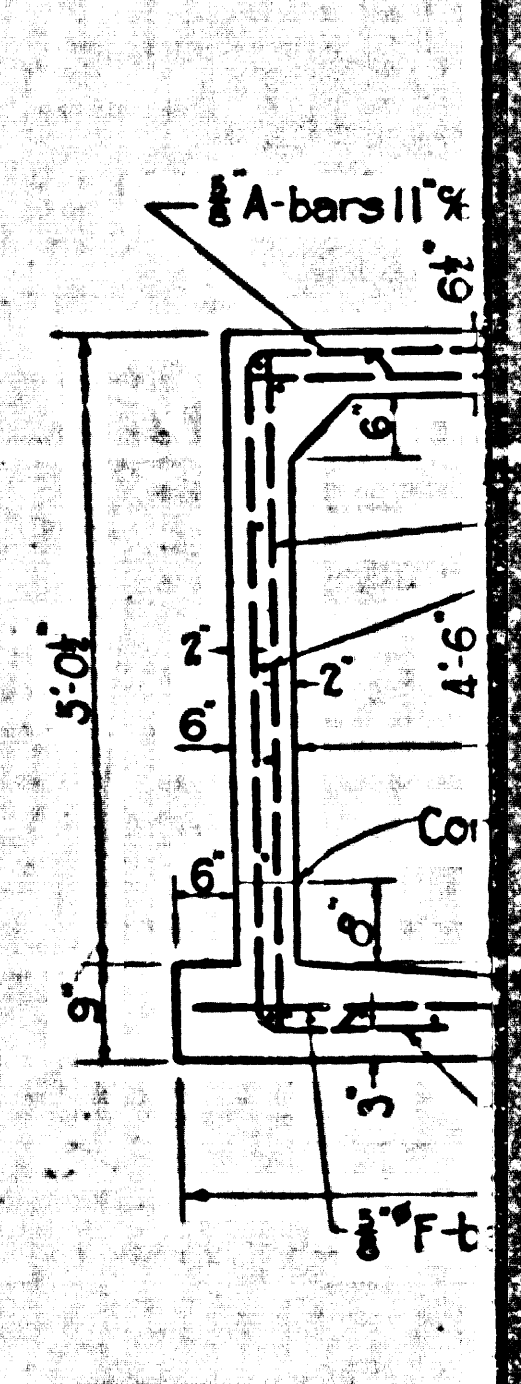
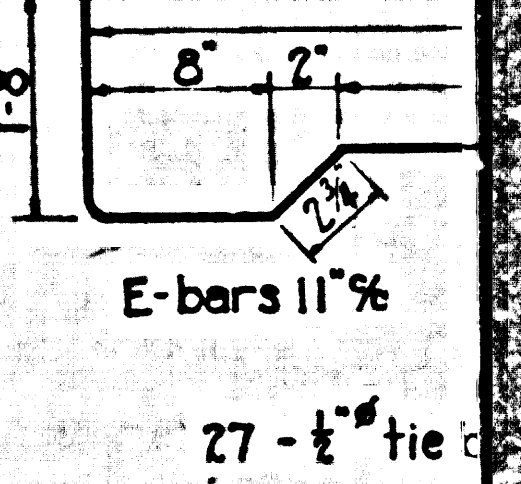
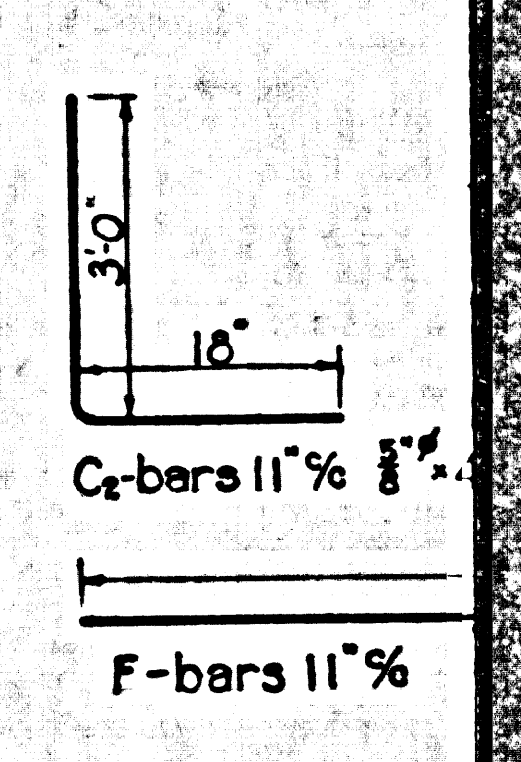
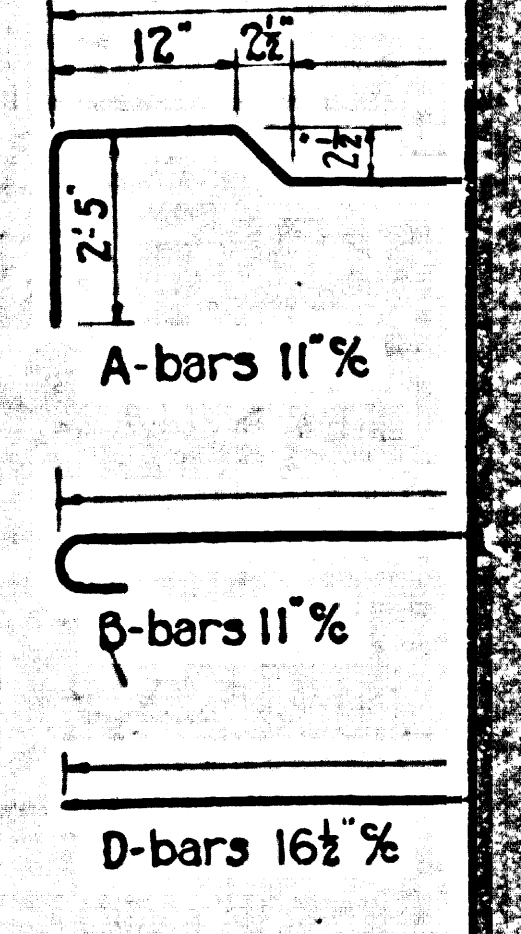
Top Slab Cover 6" : Truck Loading
 Concrete 0.61 cu.yd per lin.ft.
 Reinf. Steel 103 lbs. per lin.ft.

SECTION J
 REINF. CONC. BOX 6'-0" x 5'-6"
 YUKON AVE. LINE
 FROM STATION 89+60 TO STA. 98+90
 Scale 1/2" = 1'-0"



Top Slab Cover 6" : Truck Loading
 Concrete 0.51 cu.yd per lin.ft.
 Reinf. Steel 83 lbs. per lin.ft.

SECTION K
 REINF. CONC. BOX 5'-3" x 4'-9"
 YUKON AVE. LINE
 FROM STATION 99+00 TO STA. 102+60
 Scale 1/2" = 1'-0"



Top Slab Cover 6" : Truck Loading
 Concrete 0.61 cu.yd per lin.ft.
 Reinf. Steel 103 lbs. per lin.ft.

SECTION L
 REINF. CONC. BOX 12'-2 1/2" x 12'-2 1/2"
 YUKON AVE. LINE
 FROM STATION 102+60 TO STA. 102+60
 Scale 1/2" = 1'-0"

CSB-1164-10
 A2 OF A2