

KEY MAP
SHOWING DRAINS AND RESURFACING

NOTES:
 Elevations are in feet above U.S.G.S. or mean Sea Level Datum.
 Stations of inlets and junctions refer to the intersections of the center lines of the inlets with the center line of the main drain.
 Elevations of all inlets except catch basin inlets into box sections refer to the flow lines of the inlets produced on their gradients to the vertical plane thru the center line of the main drain. Elevations of catch basin inlets into box sections refer to the intersections of the flow lines of these inlets with the inside wall of the box section.
 For details of all standard structures see Standard Plans.
 All pipe not otherwise specified shall be plain cement pipe.
 All stubs to be one length of pipe with ends sealed with 2" red wood planking, unless otherwise specified.
 Catch basins shall be built with a curb face of 10' or more which shall include a minimum depression at opening of 2" below gutter grade, unless otherwise specified.
 Sanitary sewers crossing over or with a clearance of 150 feet or less under Storm Drain, shall be constructed or reconstructed as shown on Standard D-58.
 All reinforced concrete structures shall be of Class "R-1" Concrete.
 Weep holes 3/4" in diameter shall be placed in each sidewalk and spaced not more than five feet each way.

**LENNOX
 DRAINAGE SYSTEM**
 OF THE COUNTY OF LOS ANGELES CALIFORNIA
 PLAN AND PROFILE OF
 YUKON AVENUE LINE
 108TH. ST. BRANCH
 IMPERIAL HWY. BRANCH

SHEET 3 OF 10 SHEETS
 PREPARED BY: ALFRED JONES COUNTY SURVEYOR
 APPROVED: *Alfred Jones*
 NOVEMBER 1935

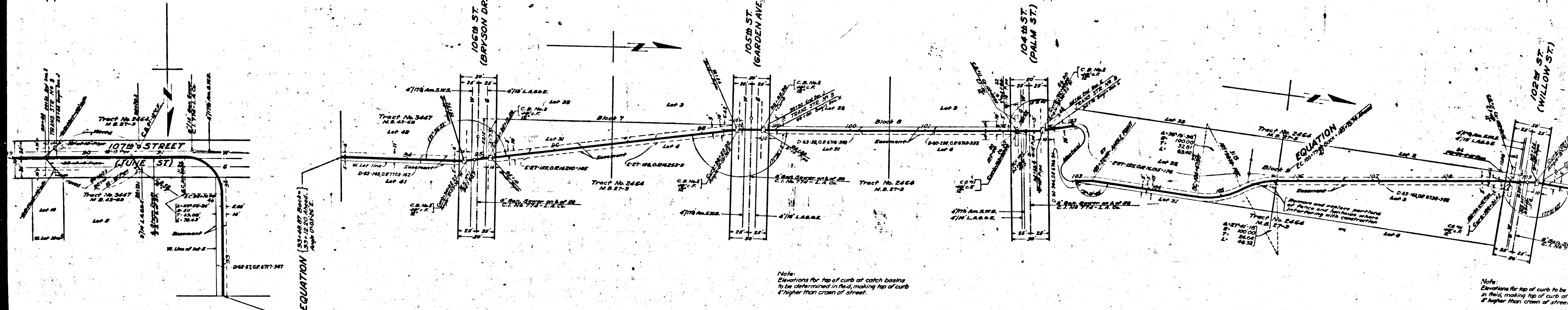
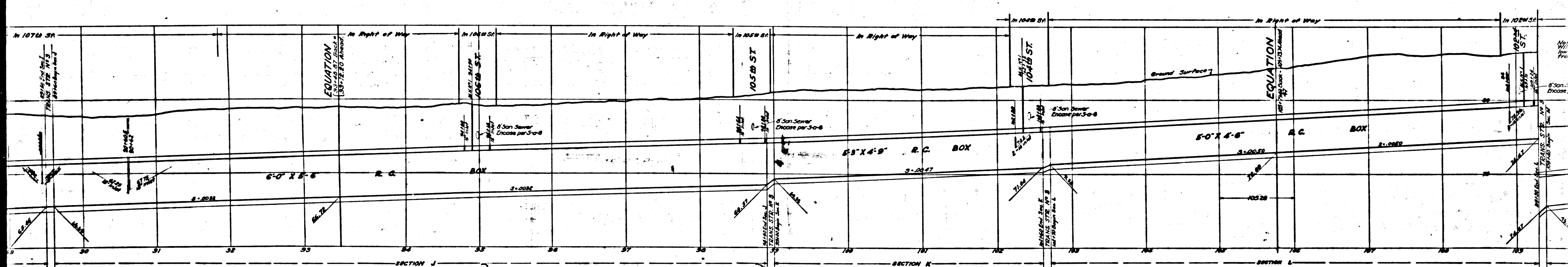
Corrected as constructed by A.W. Lynn 8-7-42
 Checked by L.O. Lempere 8-11-42

REFERENCE		DESIGNED	J.M. Marley	MAY 1935
P.B.	228	TRACED	H.C. Stern	JUNE 1935
Plan Profile	Revised 6-7-37	CHECKED	J.H. Rice	JUNE 1935
	7-22-38			
	8-2-38			

③

CSB-1164-3
 A1 OF A6

SHEET NO. 3 OF 10 SHEETS
 COUNTY SURVEYOR YUKON AVENUE LINE 108TH ST. BRANCH IMPERIAL HWY. BRANCH



Note:
Elevations for top of curb at catch basins
to be determined in field, making top of curb
4" higher than crown of street.

Note:
Elevations for top of curb to be
determined in field, making top of curb at
4" higher than crown of street.

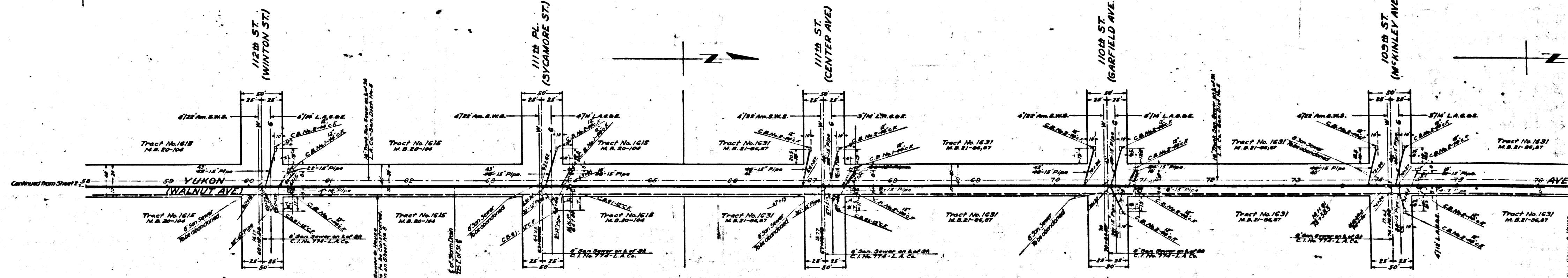
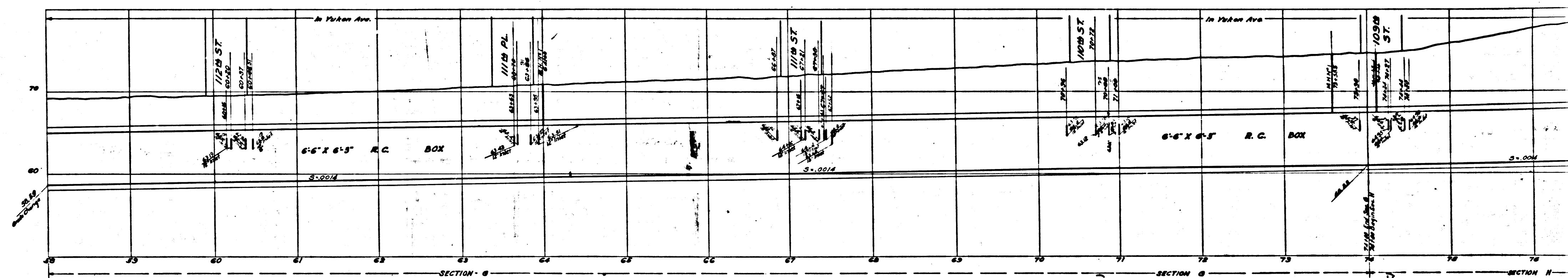
LINE

YUKON AVENUE

CSB-1164-3
A 2 OF A 6

Point this

Point #6



Note:
Elevations for top of curb of catch basins
to be determined in field, making top of curb
4" higher than street crown.

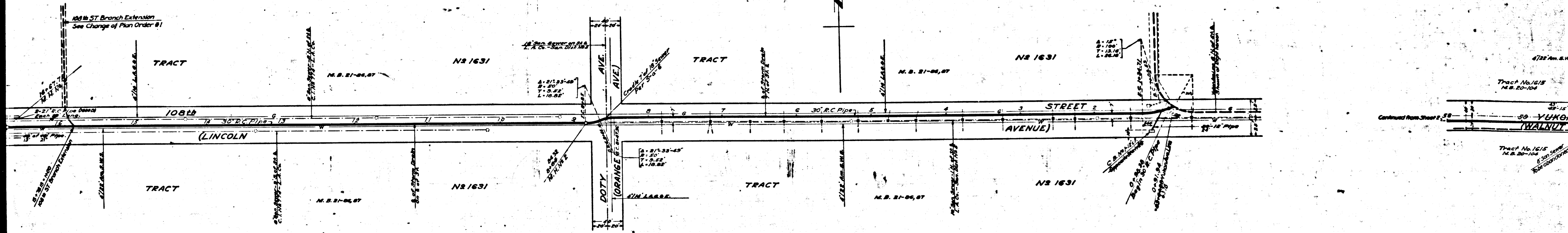
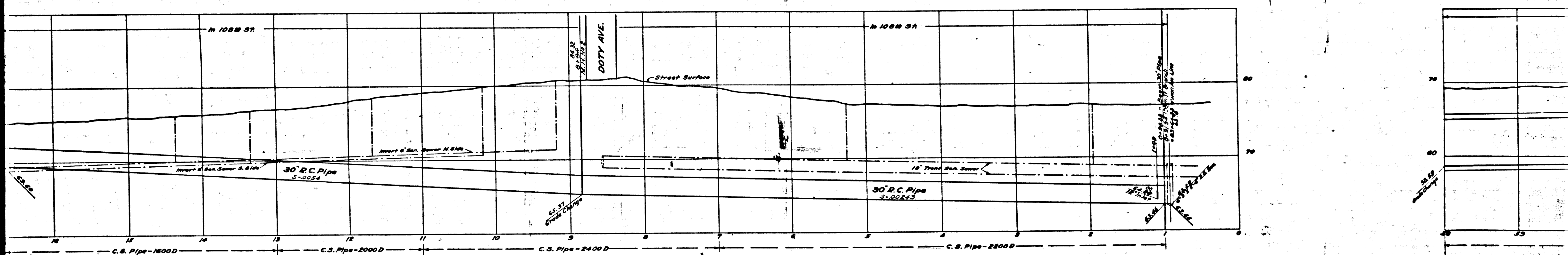
Note:
Elevations for top of curb of catch basins
to be determined in field, making top of curb
4" higher than street crown.

YUKON AVENUE (WILLIAMS ST) MAIN LINE

CSB-1164-3
A 4 OF A 6

Omit this

Put this



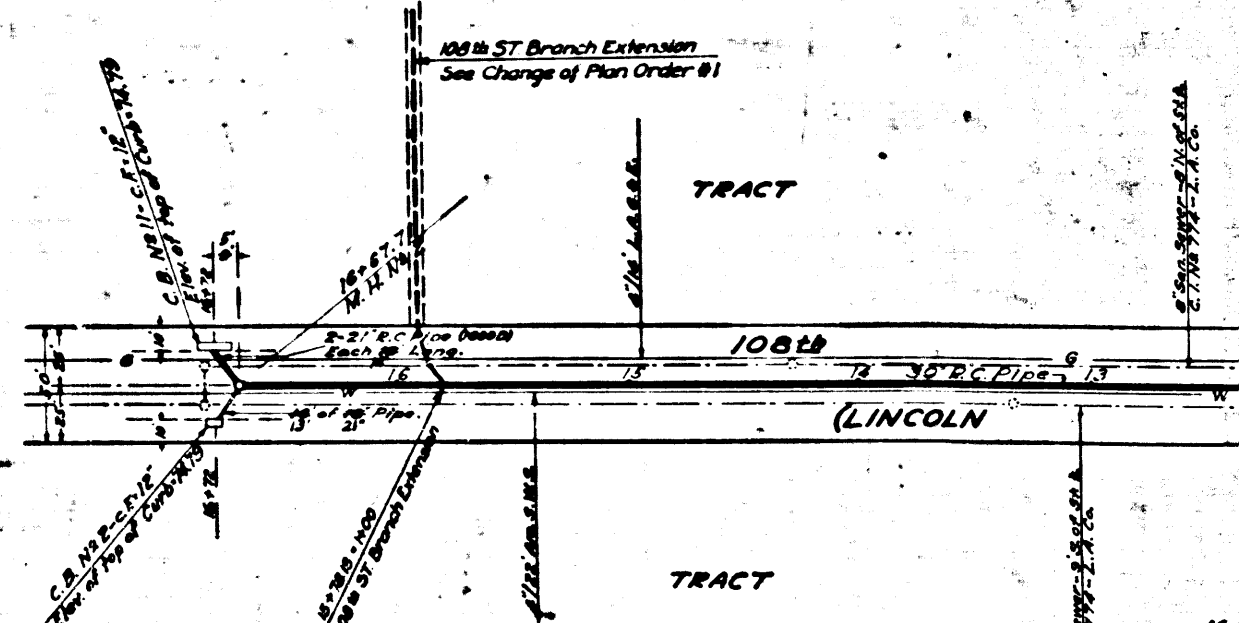
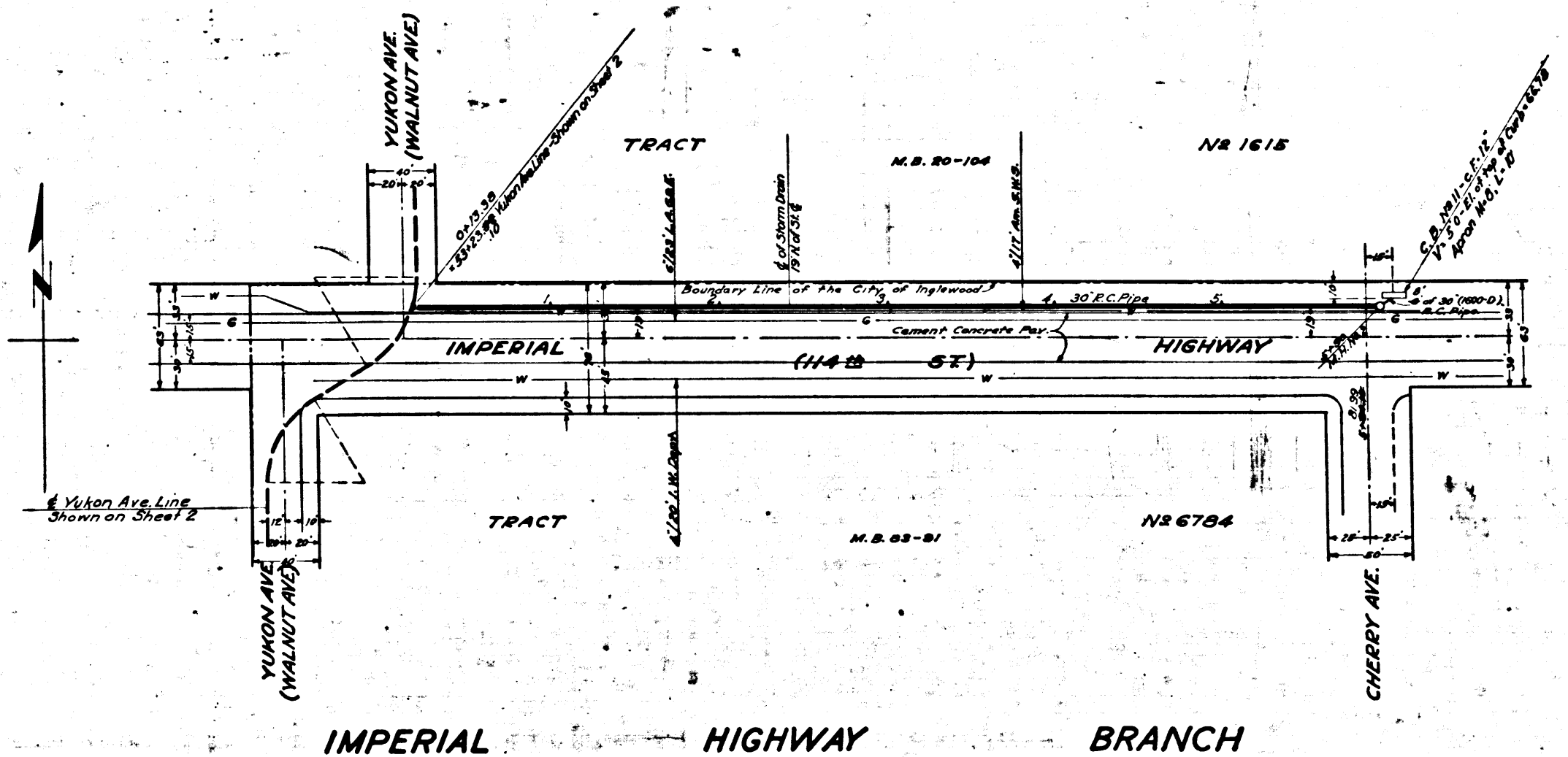
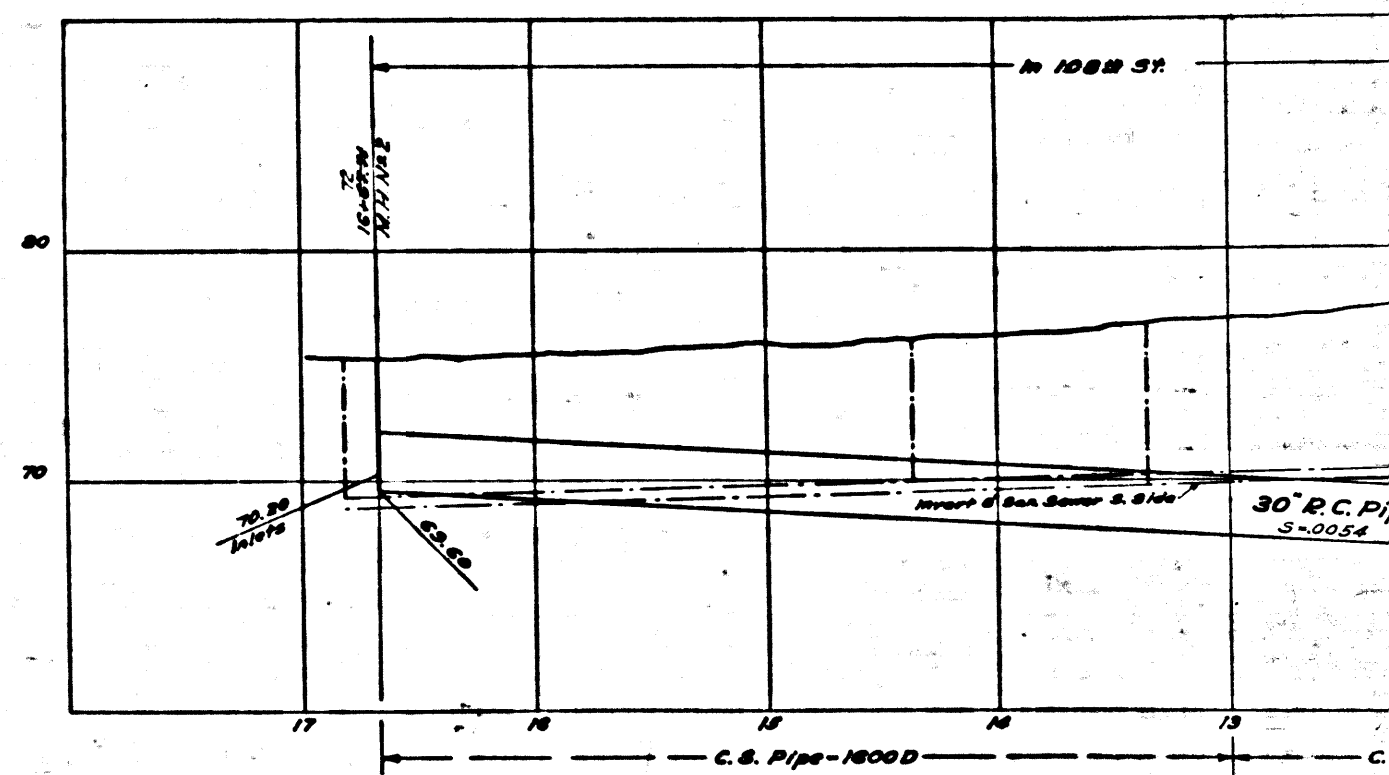
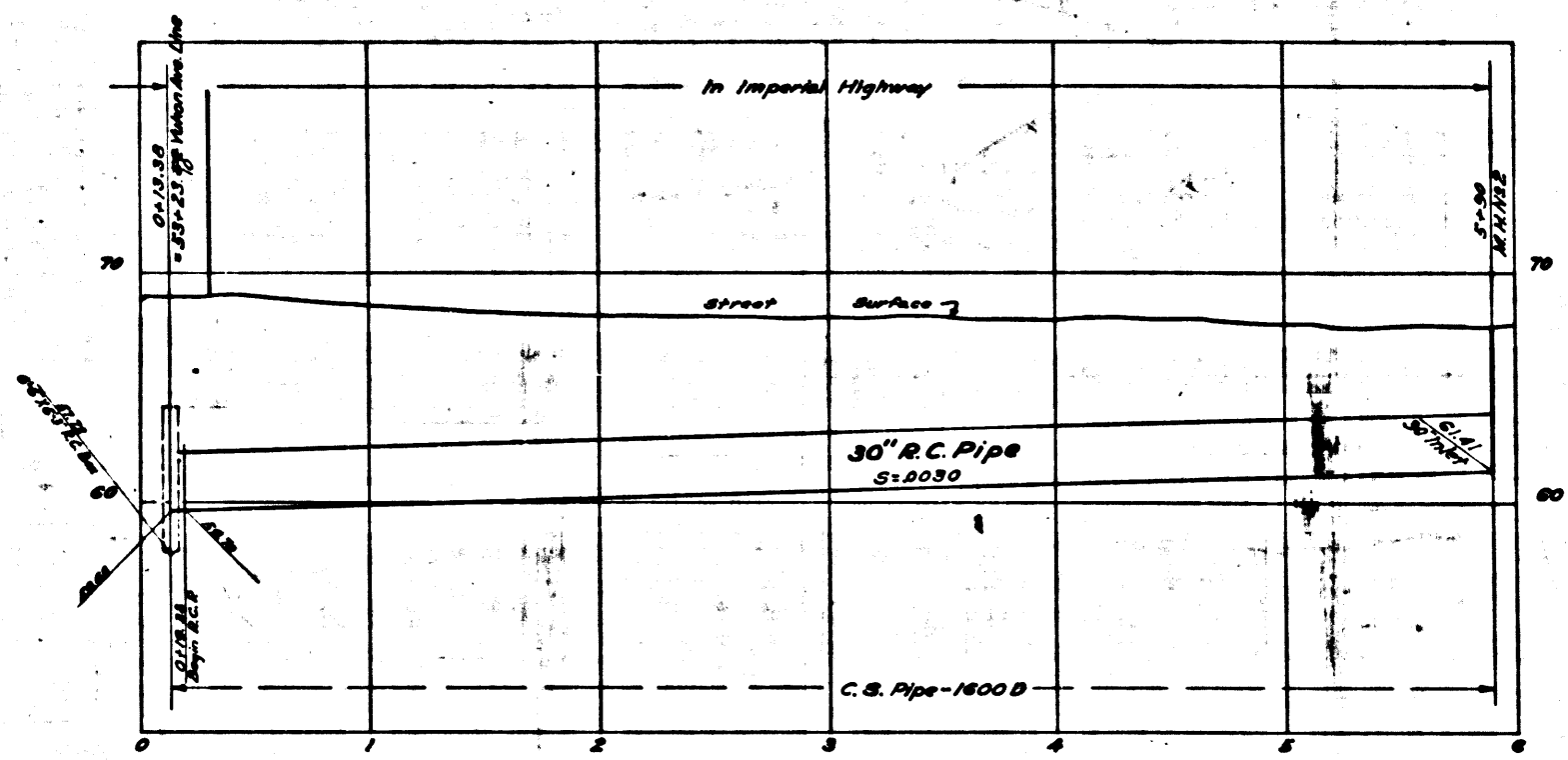
108TH.

STREET

BRANCH

CSB-1164-3
A50FA6

Trim to this line



CSB-1164-3
A6 OF A6

Trim to this line