

Scale: 1/40'

Scale: 1/40'

Scale: 1/40'

CSB-1164-3A
A1 OF A2

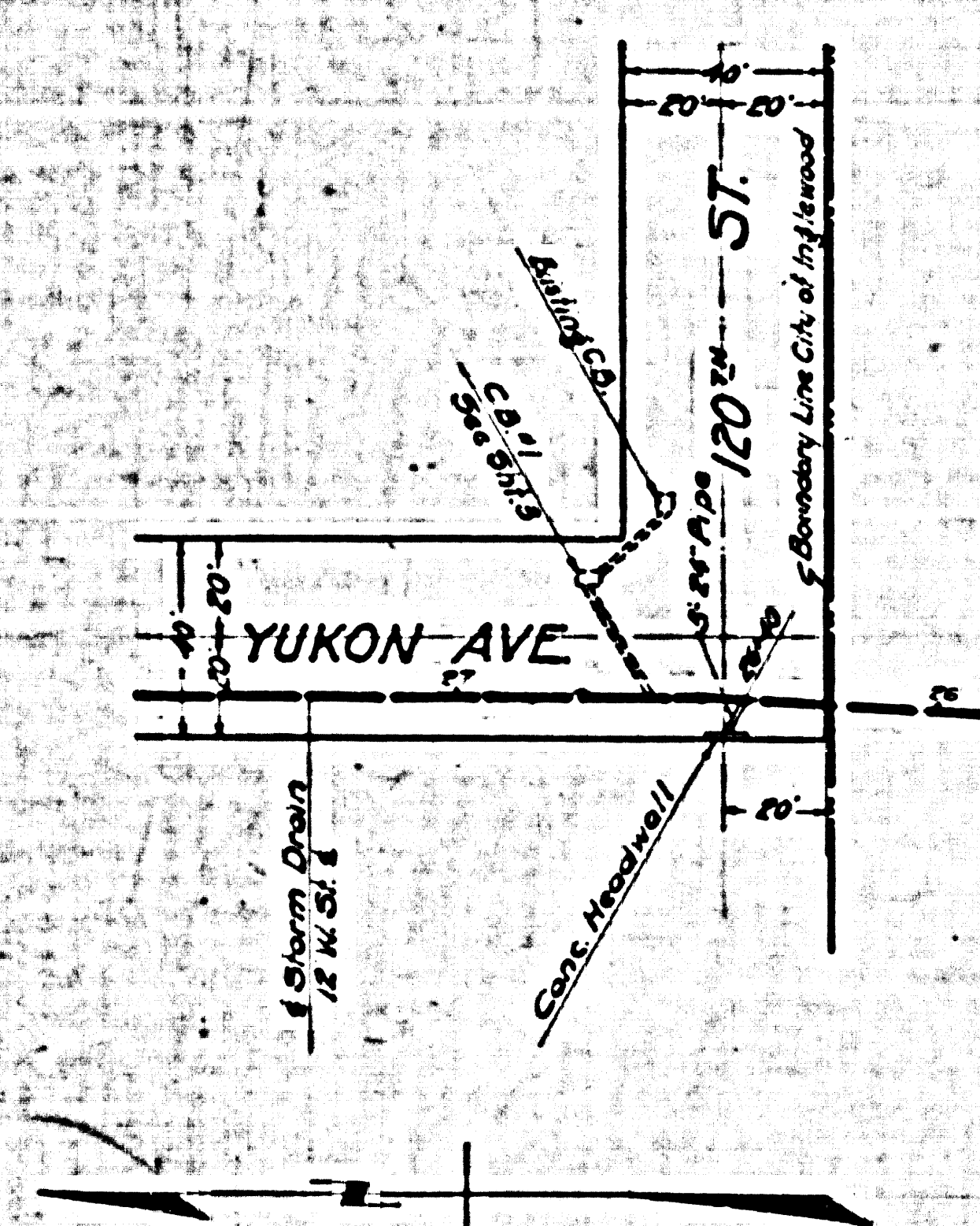
COUNTY OF LOS ANGELES, CALIFORNIA
OFFICE OF COUNTY SURVEYOR
PROPOSED ADDITIONAL CATCH BASINS
AND
PROPOSED INLET STRUCTURE
LENNOX DRAINAGE SYSTEM
SECA
IN
YUKON AVENUE
BETWEEN
111th ST. & 120th ST.
SHEET 3A

SCALE: AS SHOWN
AUG. 1936
ALFRED JONES COUNTY SURVEYOR
RECOMMENDED *[Signature]* APPROVED *[Signature]*
CHIEF DEPUTY COUNTY SURVEYOR

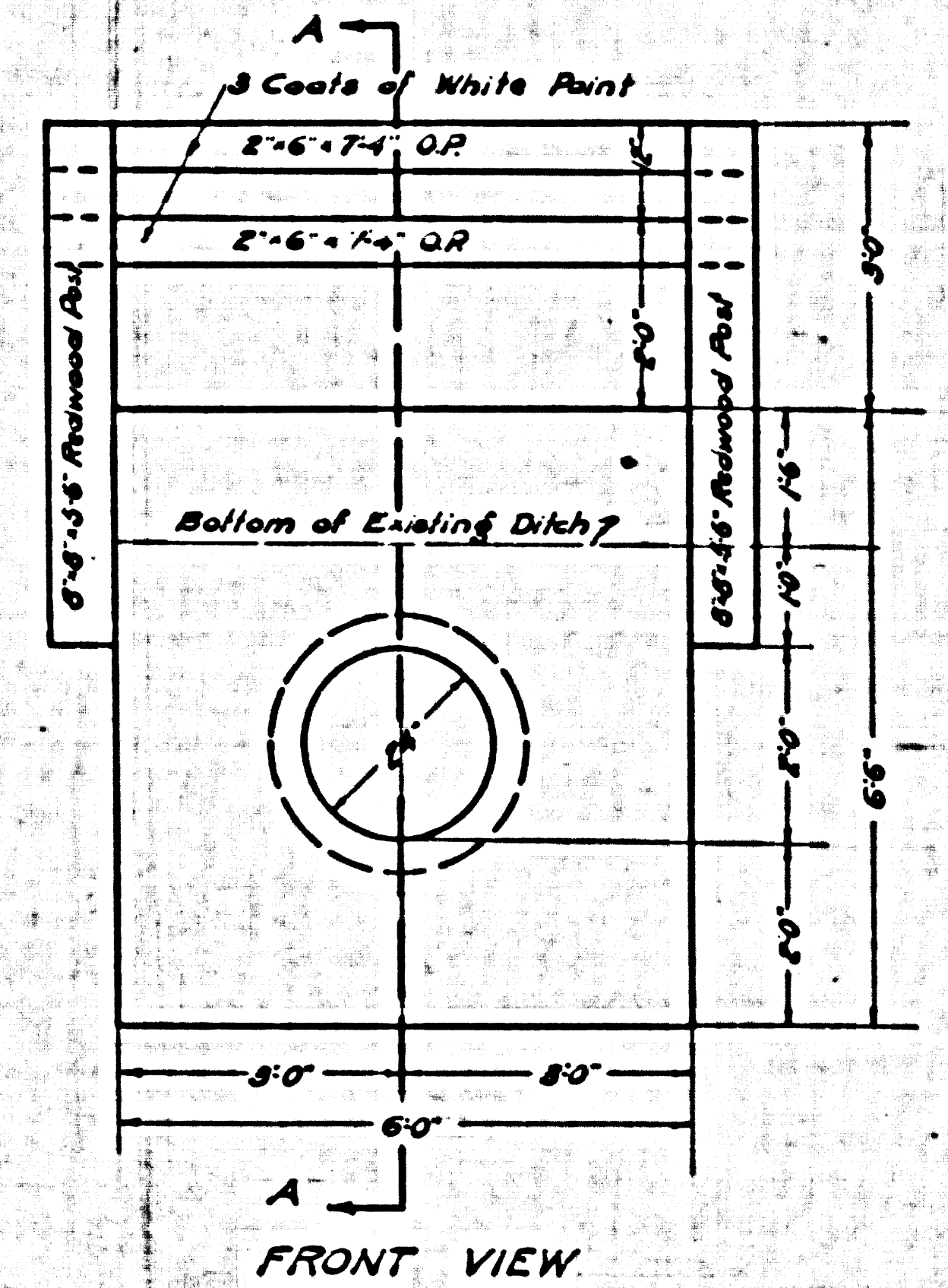
NOTE:
This plan is to accompany Change of Plan Order N91

SHEET NO. 3-A OF 3 SHEETS
COUNTY SURVEYORS MAP NO. B-1164-3
SHEETS 01 TO A-2 ON TANKS

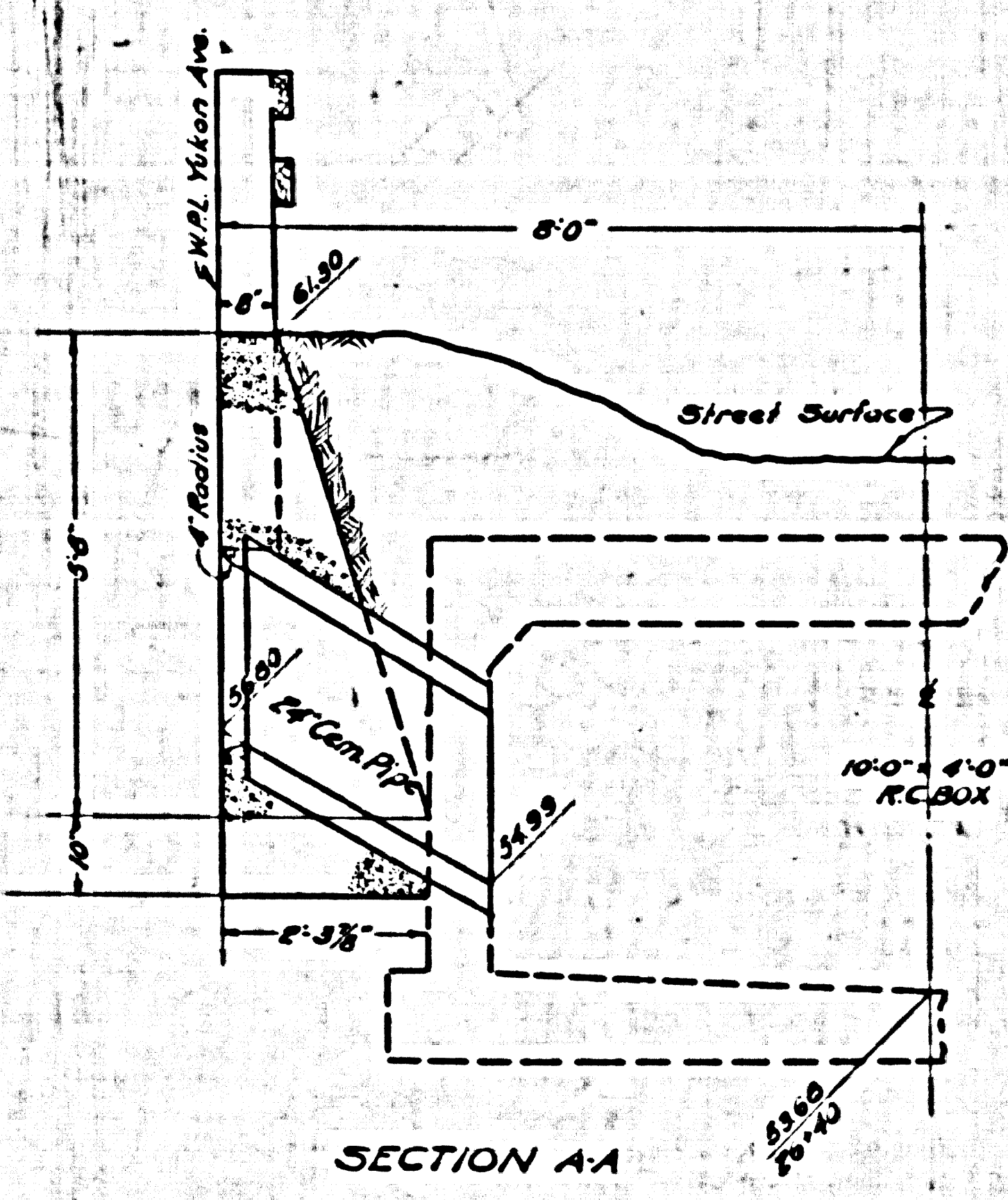
SHEET NO. 3-A OF 10 SHEETS
 CONSULT SURVEYORS MAP NO. B-184



Scale: 1"=40'



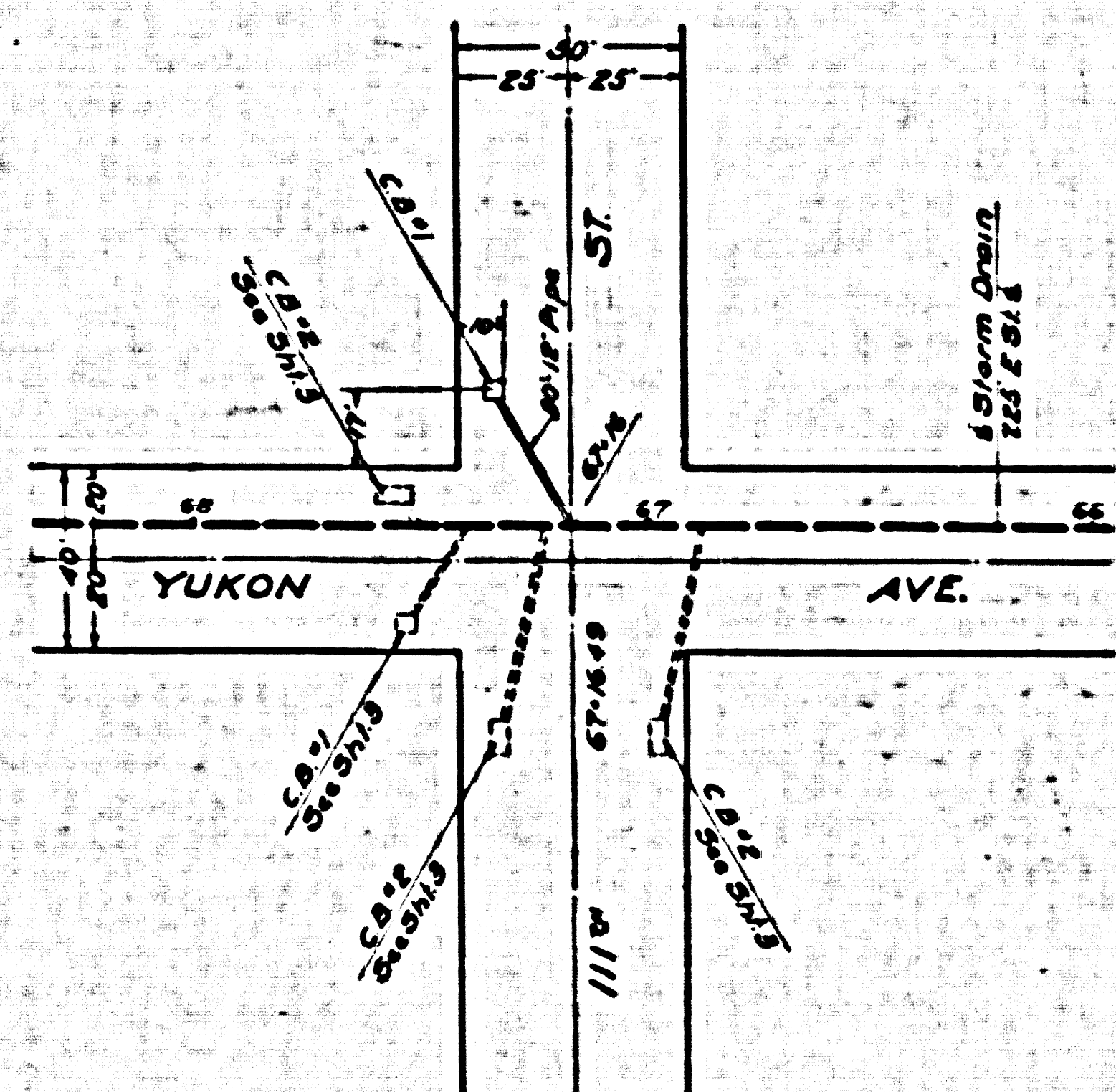
FRONT VIEW



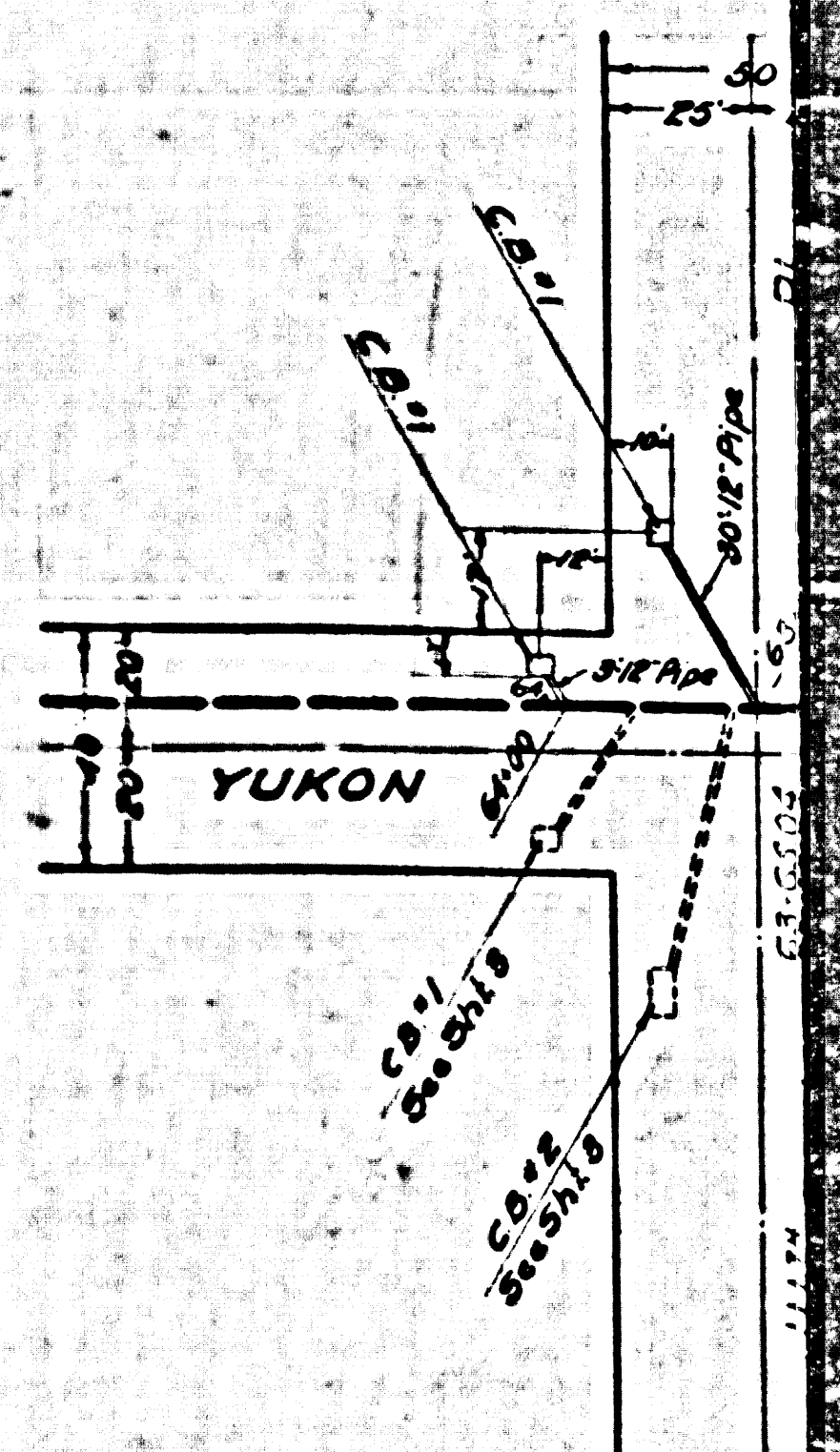
SECTION A-A

DETAILS OF
 INLET STRUCTURE
 26+40
 Scale: 5"=10'

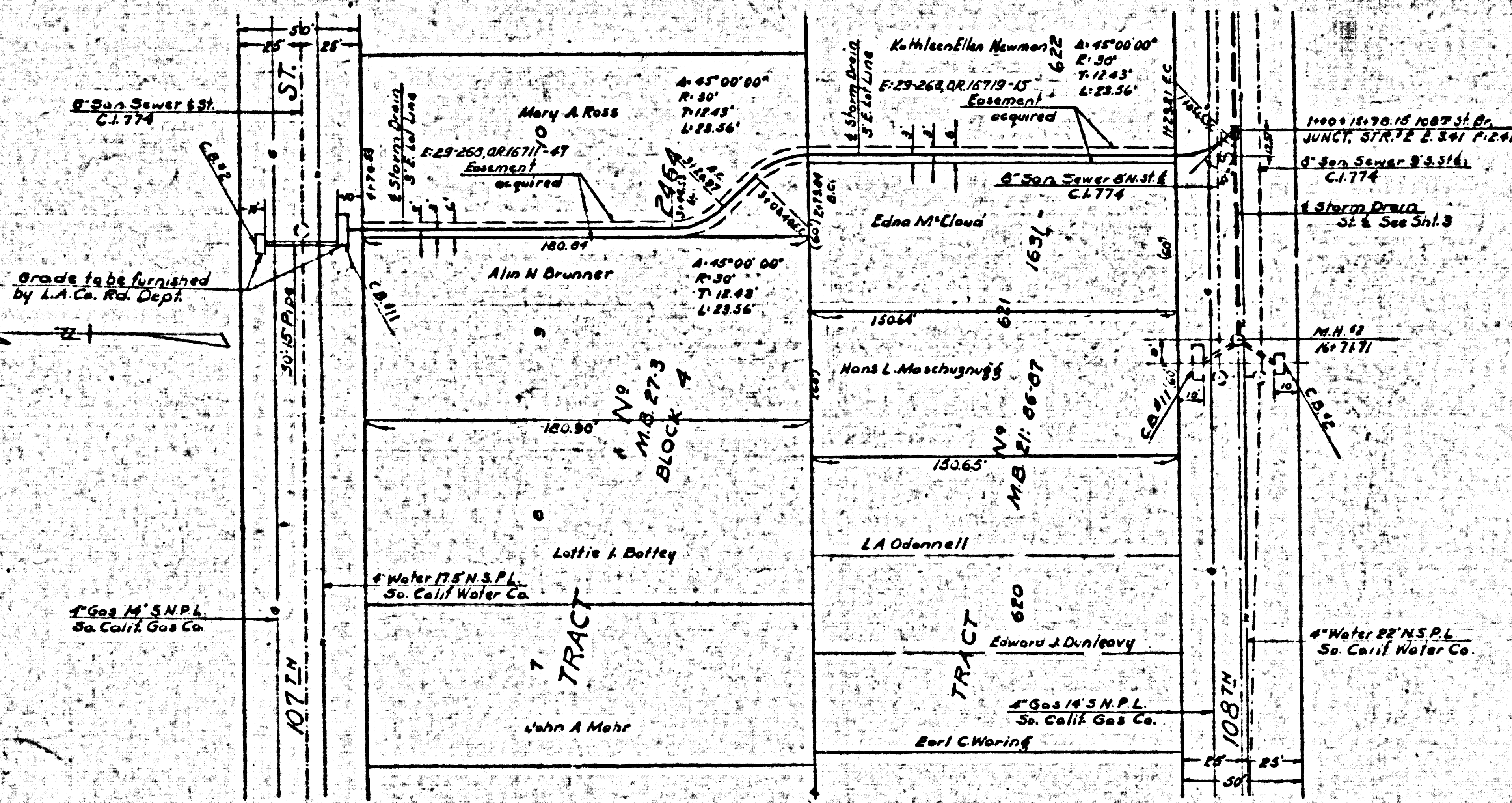
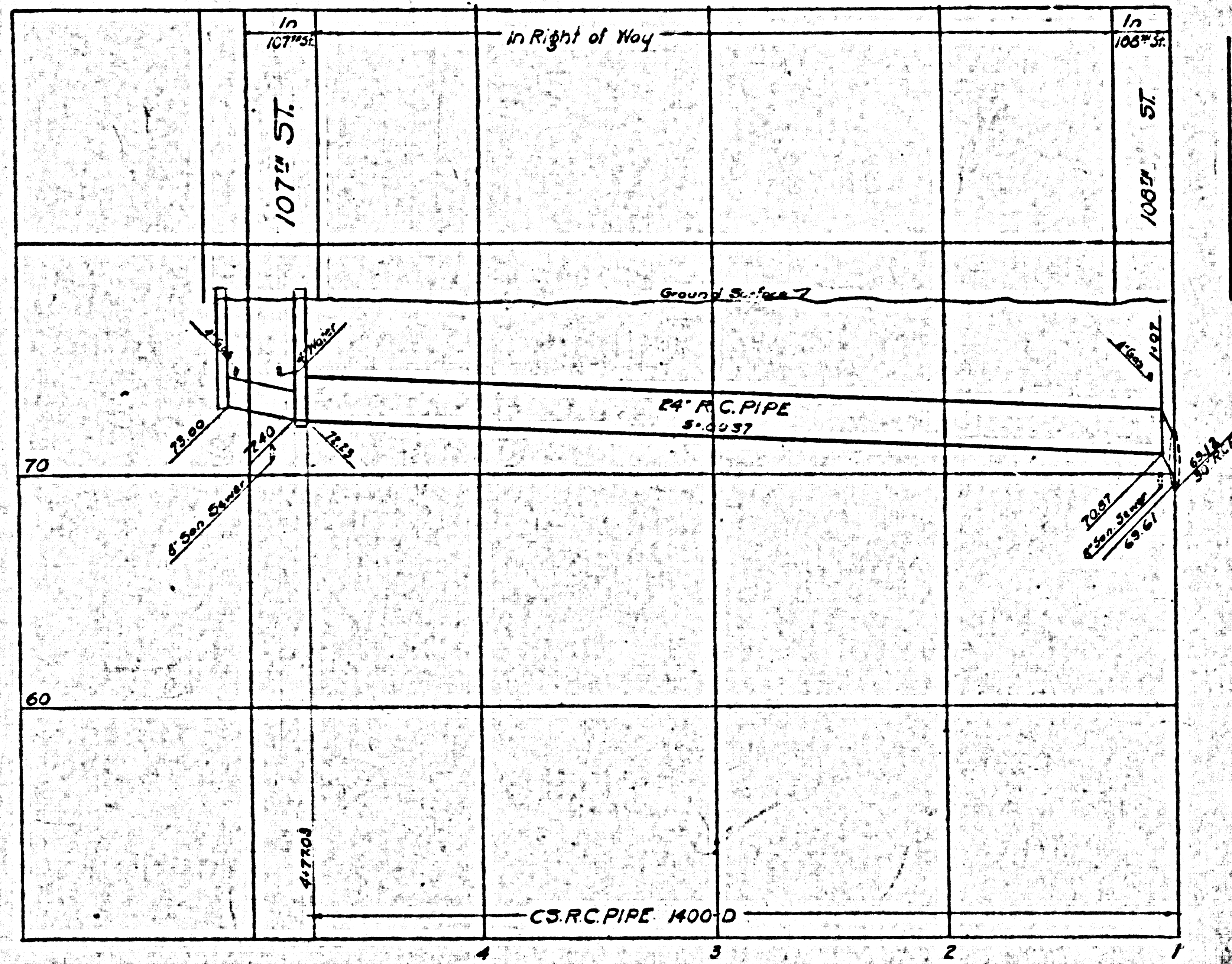
CSB-1164-3A
 A2 OF A2



Scale: 1"=40'



Scale: 1"=40'



LENNOX DRAINAGE SYSTEM
SECTION 'B'
OF THE COUNTY OF LOS ANGELES, CALIFORNIA
CHANGE OF PLAN ORDER NO. 1
PLAN AND PROFILE OF
PROPOSED 108TH ST. BR. EXTENSION

Scale: Vert. 1"=4'
Hory. 1"=40'

May 1938.
ALFRED JONES - COUNTY SURVEYOR
RECOMMENDED: *[Signature]* APPROVED: *[Signature]*
CHIEF DEPUTY COUNTY SURVEYOR

CSB-1164-3-B
A 1 OF A 1

SHEET NO. 3 OF 3 ON THIS PLAN

COUNTY SURVEYOR'S MAP NO. 8-10-38