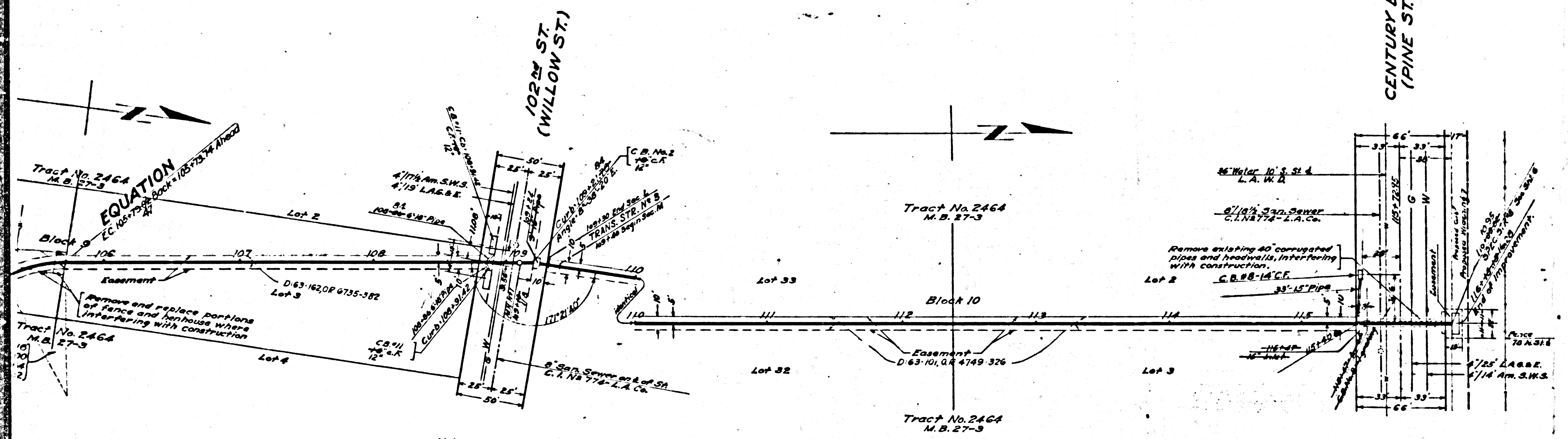


KEY MAP
SHOWING DRAINS AND RESURFACING



NOTES:

Elevations are in feet above U.S.G.S. or mean Sea Level Datum.

Stations of inlets and junctions refer to the intersections of the center lines of the inlets with the center line of the main drain.

Elevations of all inlets except catch basin inlets into box sections refer to the flow lines of the inlets produced on their gradients to the vertical plane thru the center line of the main drain. Elevations of catch basin inlets into box sections refer to the intersections of the flow lines of these inlets with the inside wall of the box section.

For details of all standard structures see Standard Plans.

All pipe not otherwise specified shall be plain cement pipe.

All stubs to be one length of pipe with ends sealed with 2" red wood planking, unless otherwise specified.

Catch basins shall be built with a curb face of 10' or more which shall include a minimum depression at opening of 4" below gutter grade, unless otherwise specified.

Sanitary sewers crossing over or with a clearance of 150 feet or less under Storm Drain, shall be constructed or reconstructed as shown on Standard Dc-58.

All reinforced concrete structures shall be of Class "A" Concrete.

Weep holes 3/4" in diameter shall be placed in each sidewall and spaced not more than five feet each way.

**LENNOX
DRAINAGE SYSTEM**
OF THE COUNTY OF LOS ANGELES CALIFORNIA
PLAN AND PROFILE OF
YUKON AVENUE LINE
108TH. ST. BRANCH
IMPERIAL HWY. BRANCH

SHEET 3 OF 10 SHEETS

NOVEMBER 1935
ALFRED JONES COUNTY SURVEYOR

Checked as constructed by AW Lynn 8-7-42
Checked by LO Lanphere 8-11-42

REFERENCE		DESIGNED	J.H. Hartley	MAY 1935
F. D.	228	TRACED	M.C. Mann	JUNE 1935
L. B.	288	CHECKED	J.H. Rice	JUNE 1935

③

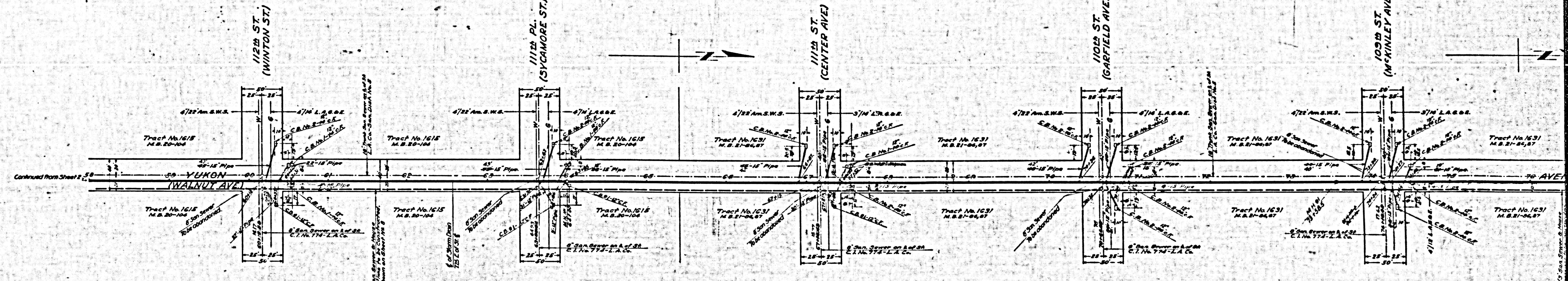
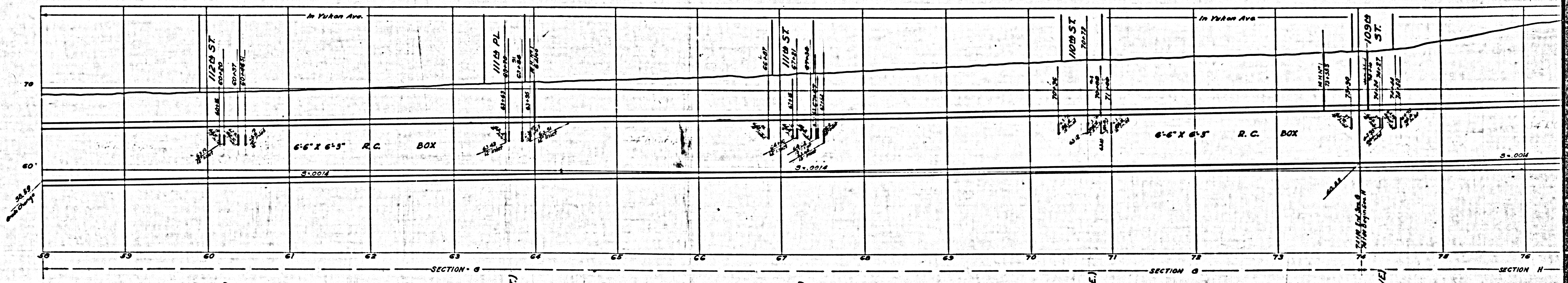
CSB-1164-3
A 1 OF A 6

SHEET 3 OF 10 SHEETS

COMPL. BY ALFRED JONES

Print this

Print this



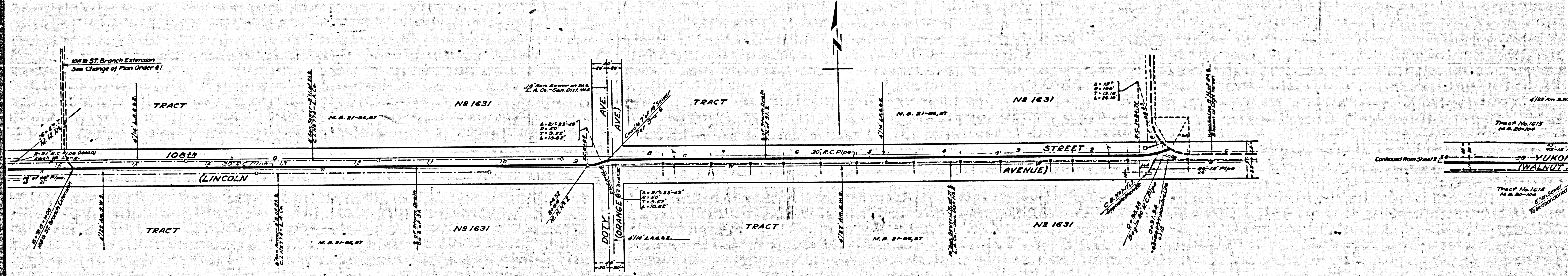
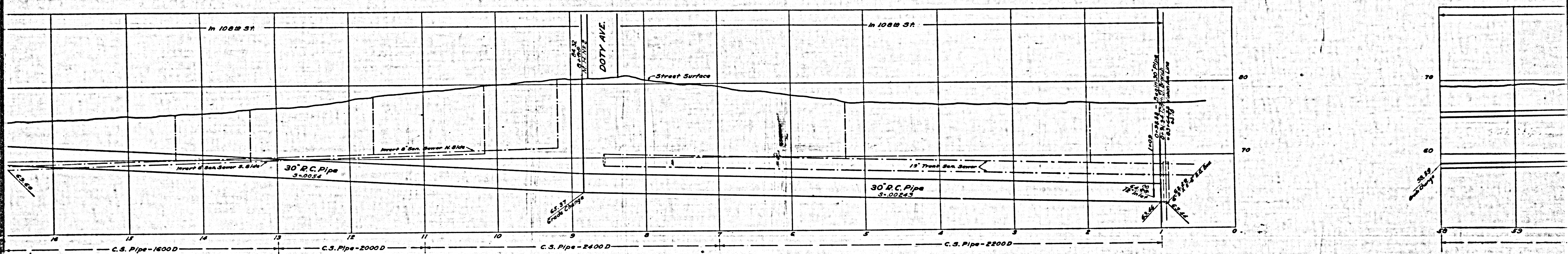
Note:
Elevations for top of curb of catch basins
to be determined in field, making top of curb
4' higher than street crown.

Note:
Elevations for top of curb of catch basins
to be determined in field, making top of curb
4' higher than crown of street.

YUKON AVENUE (WILLIAMS ST.) LINE

CSB-1164-3
A40FAG

Omit this ~~-----~~ Plot this



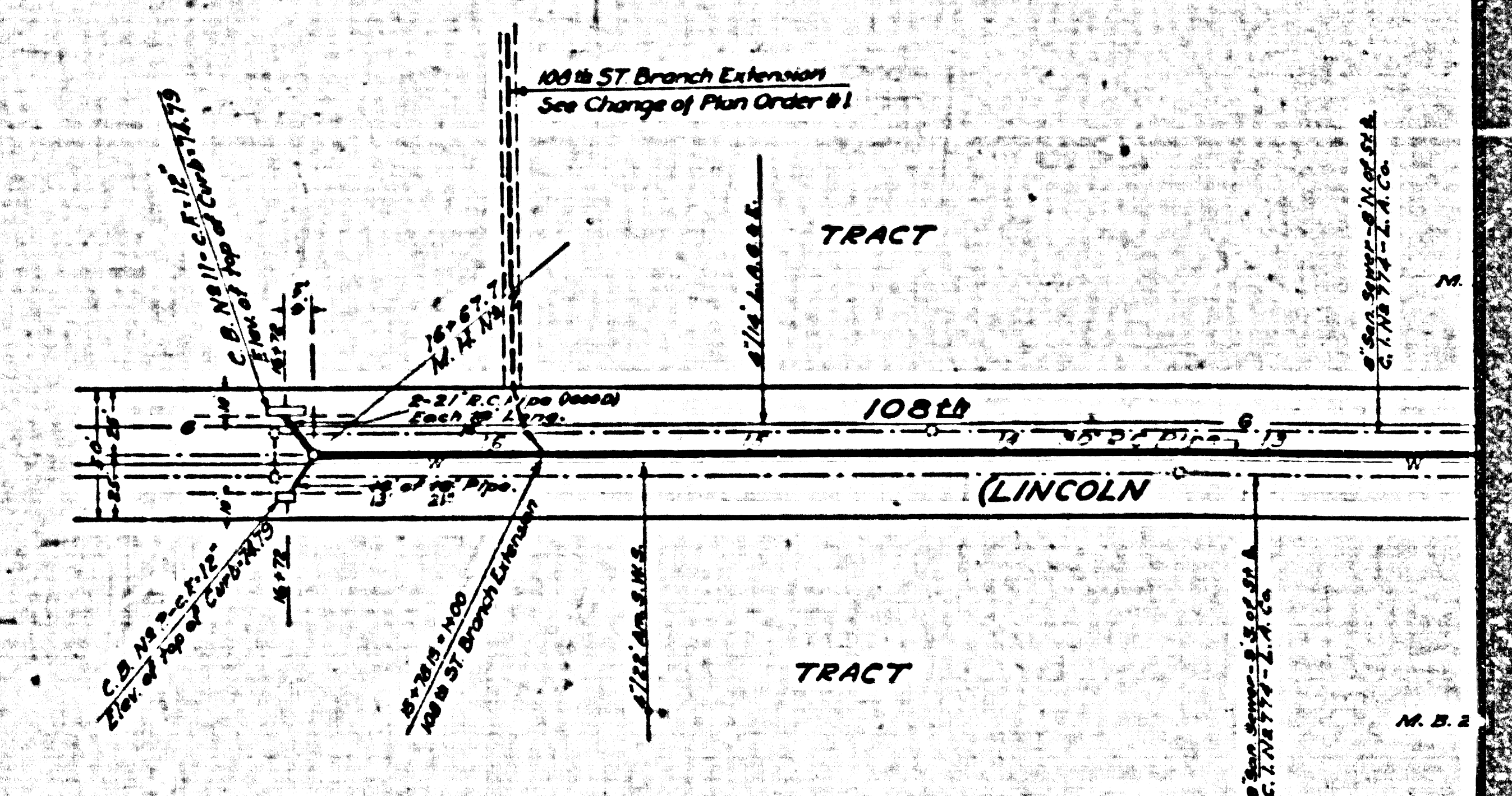
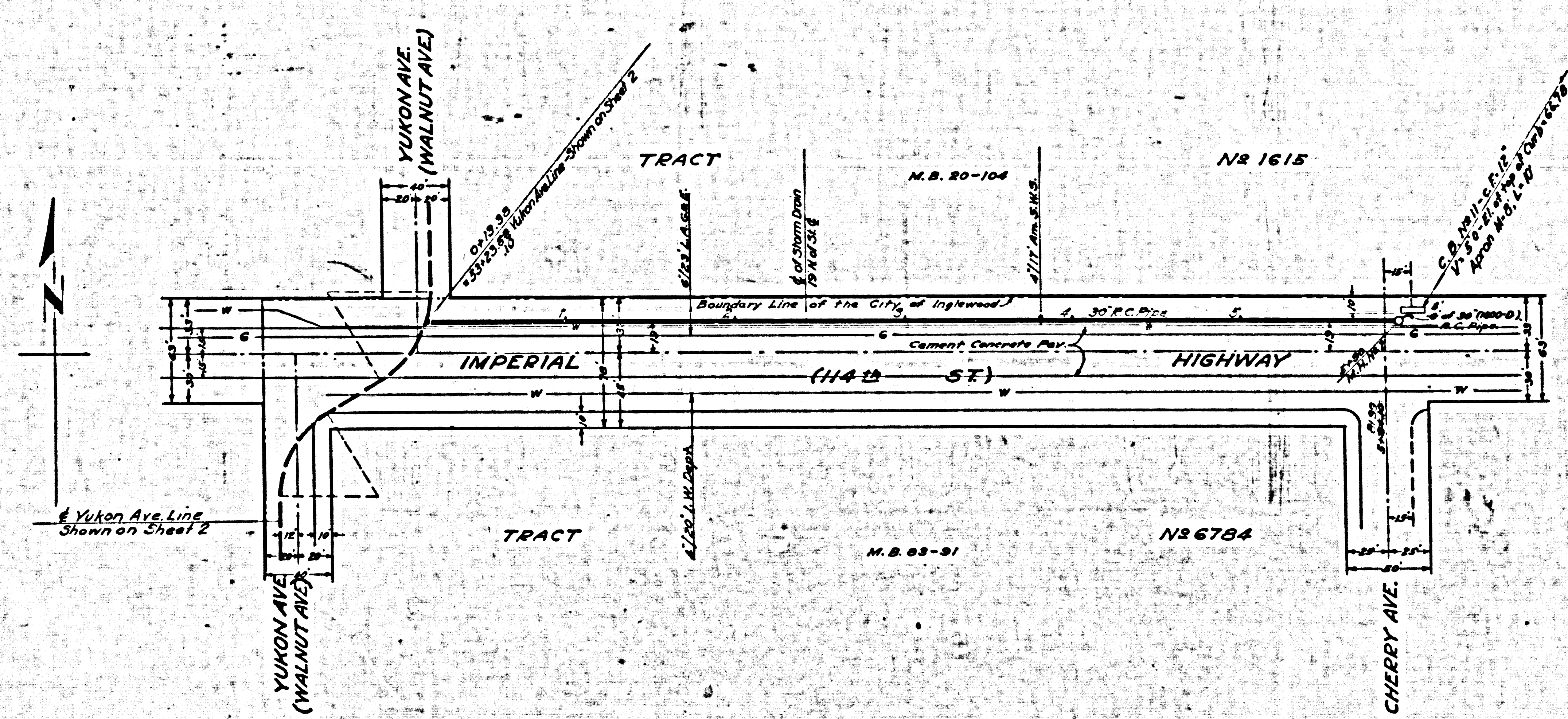
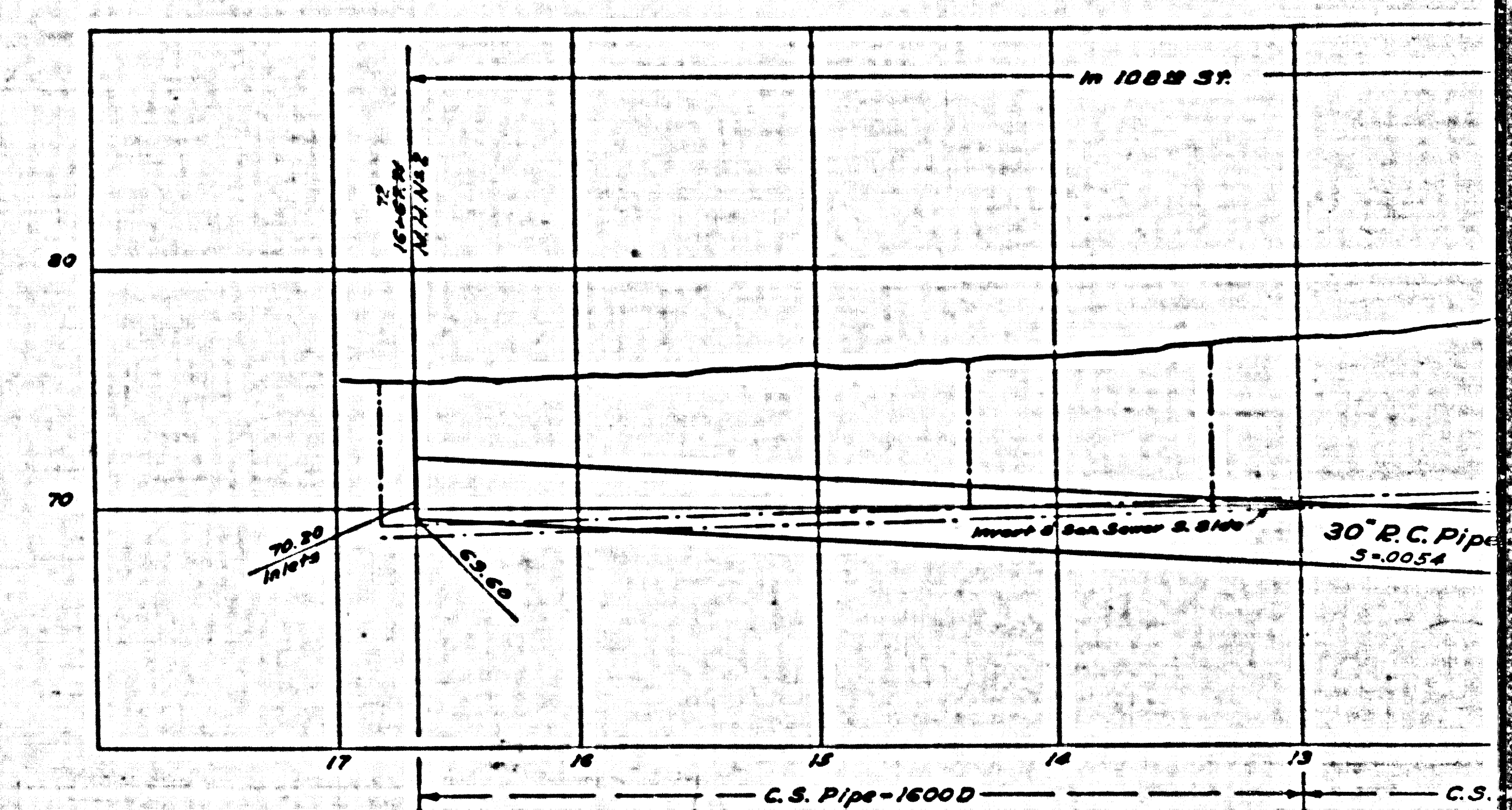
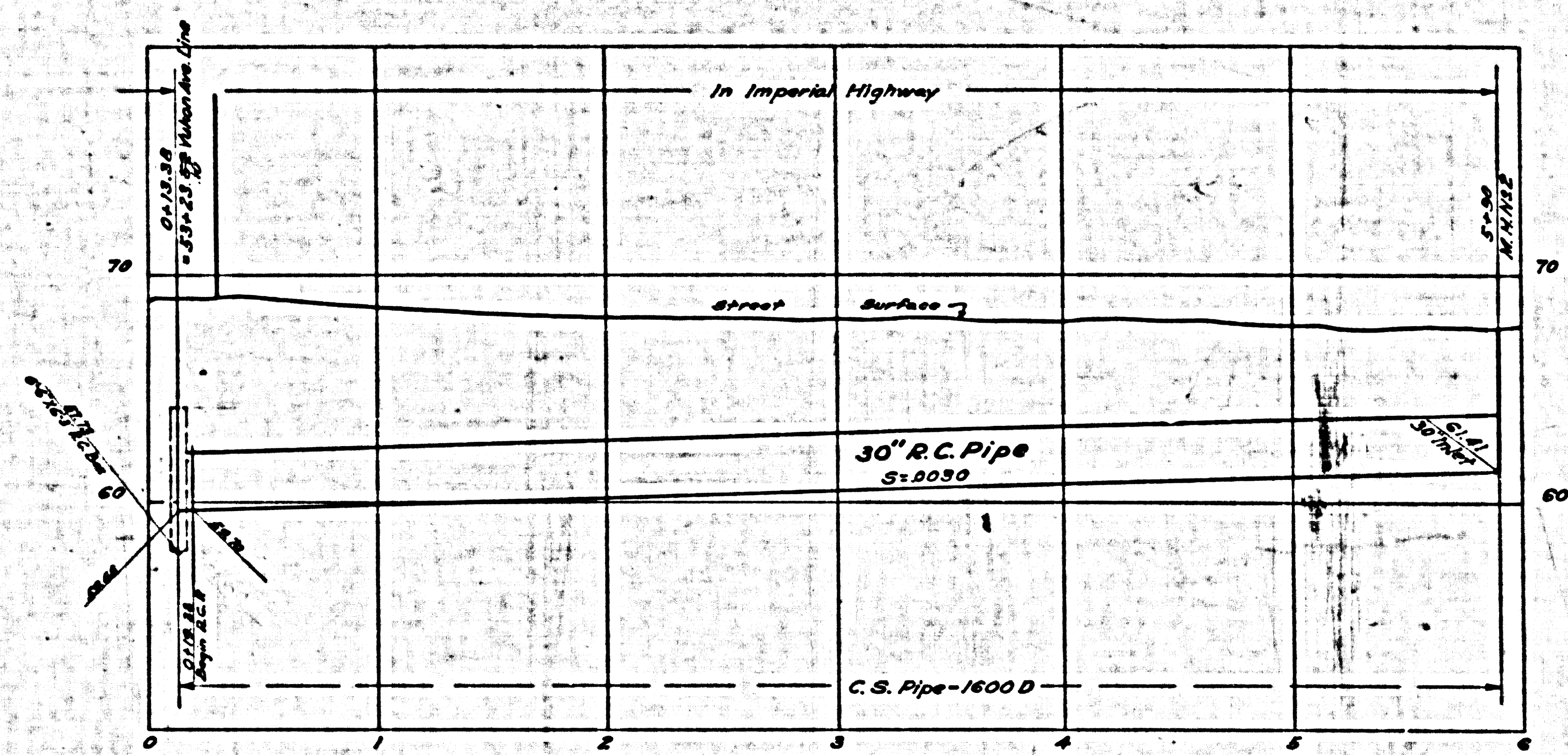
108TH.

STREET

BRANCH

CSB-1164-3
A50F A6

Trim to this Line

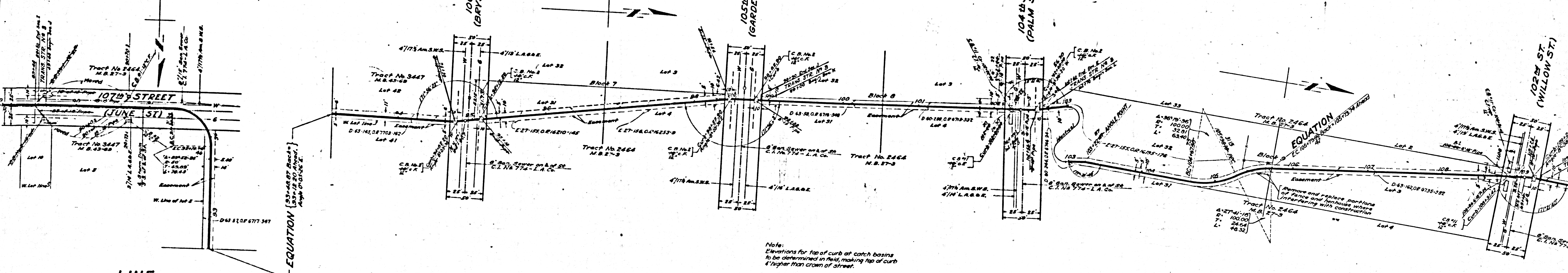
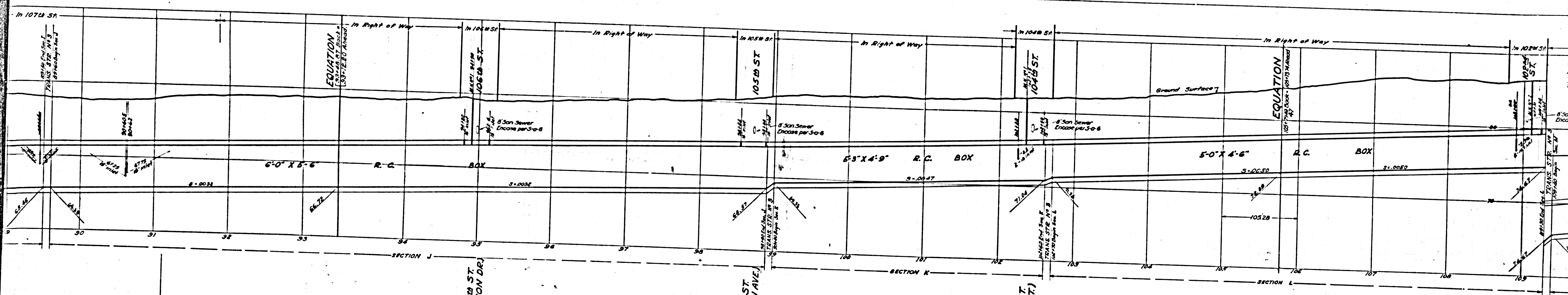


IMPERIAL HIGHWAY BRANCH

108TH

CSB-1164-3
A6 OF A6

Trim to this Line



Note:
Elevations for top of curb at catch basins
to be determined in field, making top of curb
4" higher than crown of street.

Note:
Elevations for top of curb to be
determined in field, making top of curb
4" higher than crown of street.

LINE

YUKON AVENUE

CSB-1164-3
A 2 OF A 6

