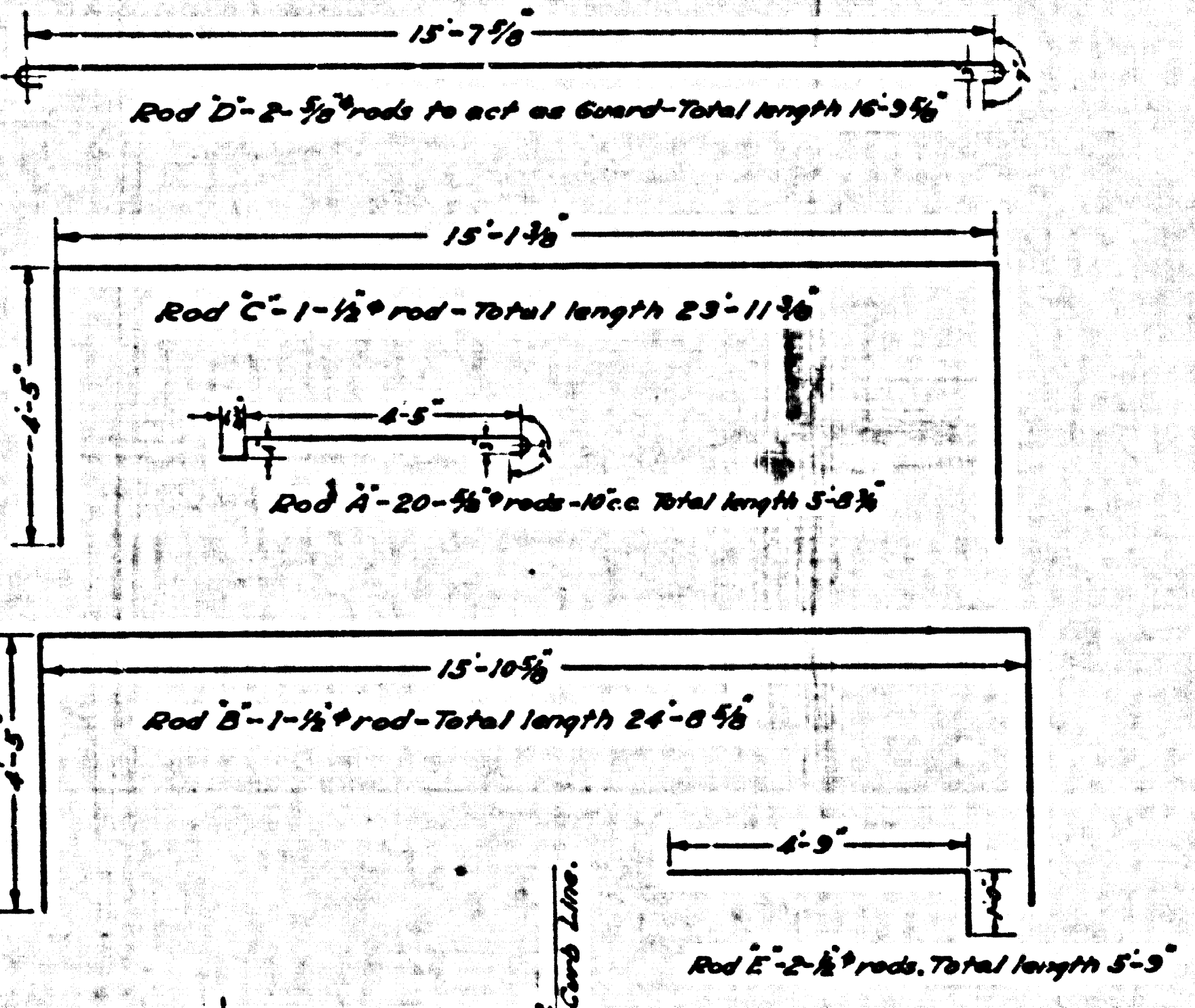
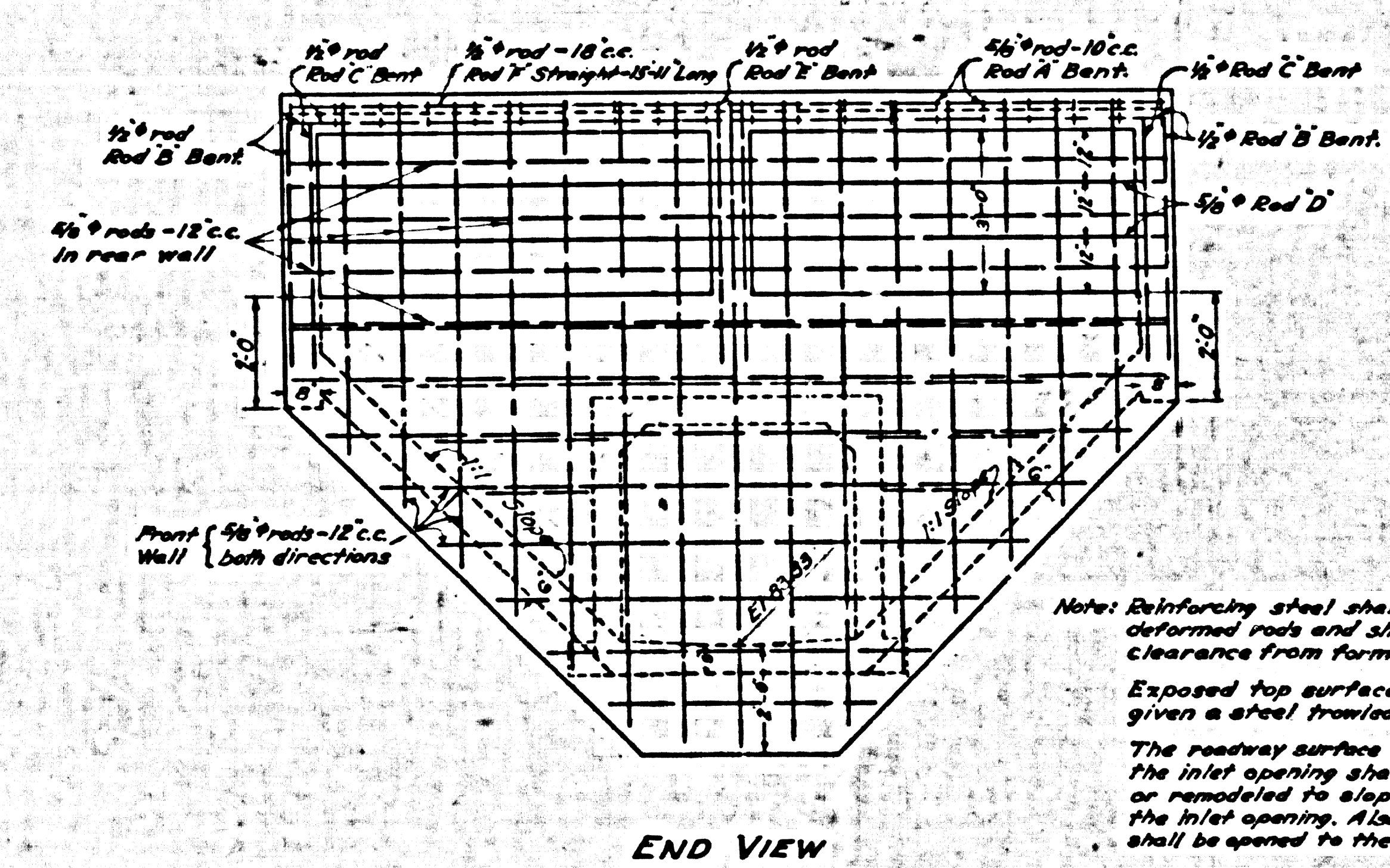
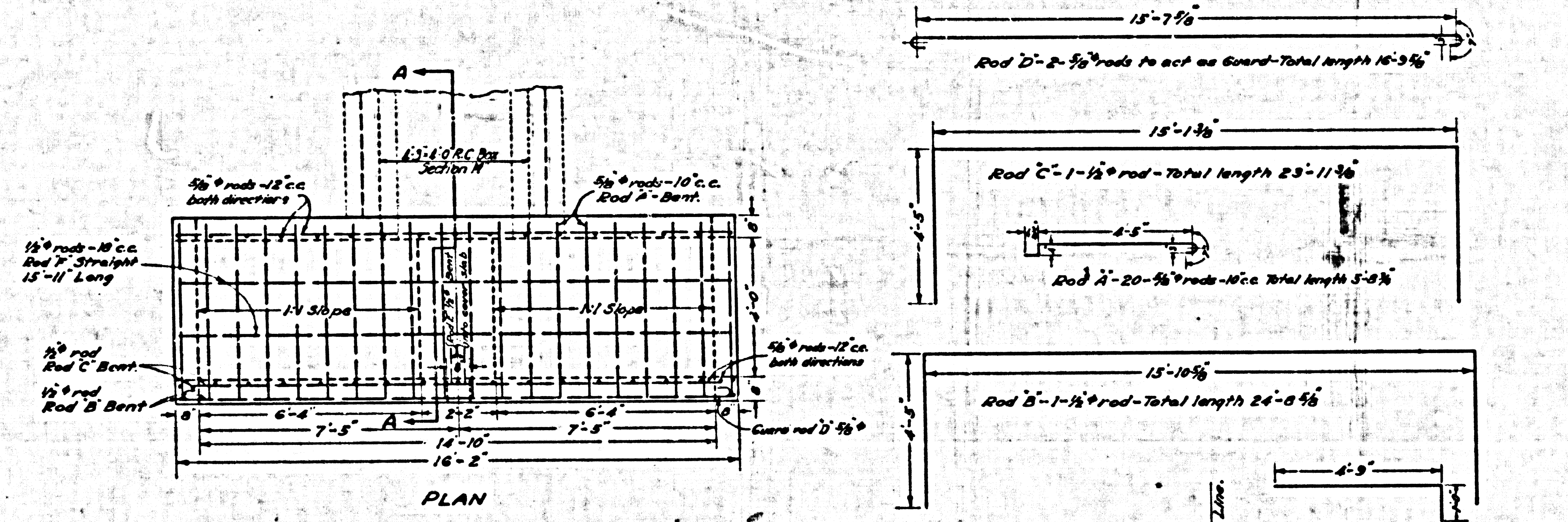


SHEET NO. 6 OF 10 SHEETS
COUNTY SUPERVISOR'S MAP NO. B-116

SHEET NO. 6 OF 10 SHEETS
COUNTY SUPERVISOR'S MAP NO. B-116

1/2" long - 10" c.c.
1/2" long - 10" c.c.
1/2" long - 10" c.c.
1/2" long - 10" c.c.
1/2" long - 10" c.c.
1/2" long - 10" c.c.
1/2" long - 10" c.c.
1/2" long - 10" c.c.



Note: Reinforcing steel shall be round deformed rods and shall have 1/2" clearance from forms.
Exposed top surface to be given a steel trowel finish.
The roadway surface within 5' of the inlet opening shall be modeled or resurfaced to a slope uniformly to the inlet opening. Also a waterway shall be opened to the inlet.

SPECIAL STRUCTURE No. 3
INTAKE
STA. 116+03.82
YUKON AVENUE MAIN LINE.
Scale: 1/2"=1'

NOTES:
Elevations are in feet above U.S.S.S. or mean Sea Level Datum.
Stations of inlets and junctions refer to the intersections of the center lines of the inlets with the center line of the main drain.
Elevations of all inlets except catch basin inlets into box sections refer to the flow lines of the inlets produced on their gradients to the vertical plane thru the center line of the main drain. Elevations of catch basin inlets into box sections refer to the intersections of the flow lines of these inlets with the inside wall of the box section.
For details of all standard structures see Standard Plans.
All pipe not otherwise specified shall be plain cement pipe.
All stubs to be one length of pipe with ends sealed with 2" red wood planking, unless otherwise specified.
Catch basins shall be built with a curb face of 10" or more which shall include a minimum depression at opening of 4" below gutter grade, unless otherwise specified.
Sanitary sewers crossing storm drains, shown in profile with less than two feet clearance, are to be encased as per S-6 for a length equal to the width of conduit trench.
All reinforced concrete structures to be Class "A" Concrete.
Weep holes 3/4" in diameter shall be placed in each sidewall and spaced not more than five feet each way.

LENNOX DRAINAGE SYSTEM
OF THE COUNTY OF LOS ANGELES, CALIFORNIA
DETAILS OF SPECIAL STRUCTURES
SPECIAL STRUCTURES NO. 1, 2 & 3
AND
DETAILS OF BOX SECTIONS
SECTIONS A, B & C
FOR
YUKON AVENUE LINE

SHEET 6 OF 10 SHEETS
SCALES AS SHOWN
NOVEMBER 1935
ALFRED JONES COUNTY SURVEYOR

RECOMMENDED BY *CSB* APPROVED BY *Alfred Jones*

REFERENCE	DESIGNED	J. H. Hartley	SEPT. 1935
	TRACED	H. C. Mann	SEPT. 1935
	CHECKED	J. H. Rice	SEPT. 1935
		J. H. Hartley	SEPT. 1935

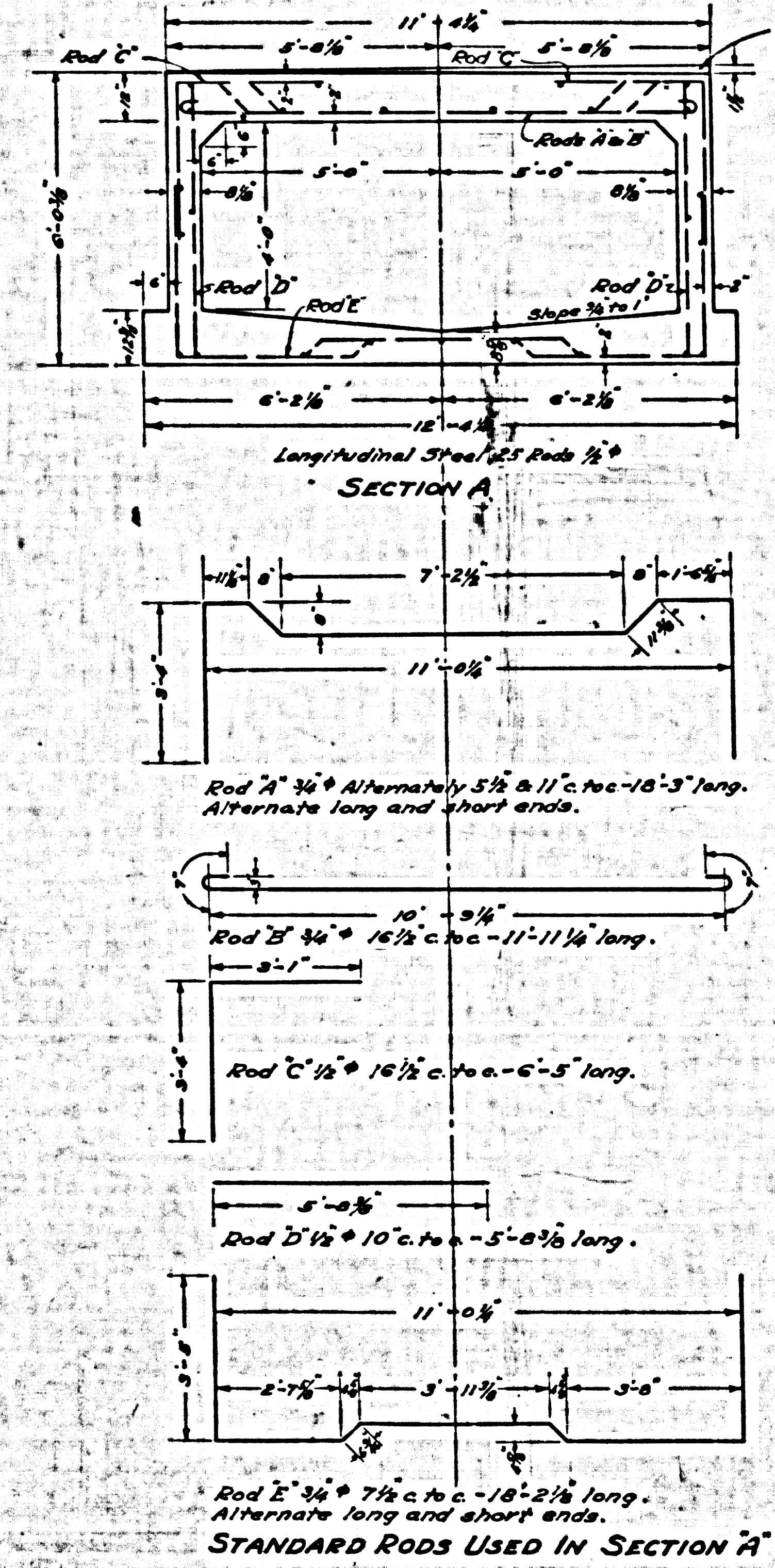
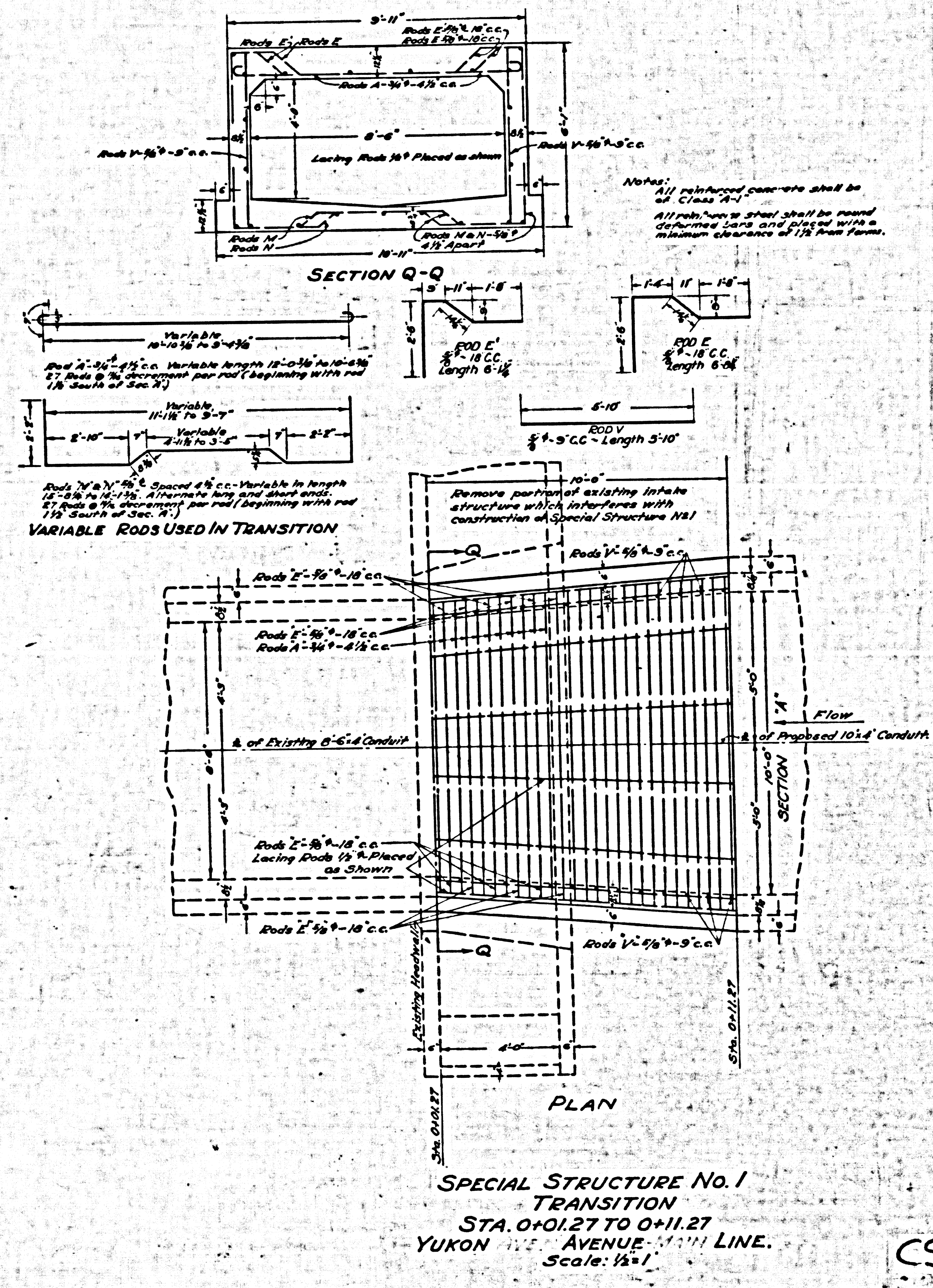
CSB-1164-6
A. OF A 3

6

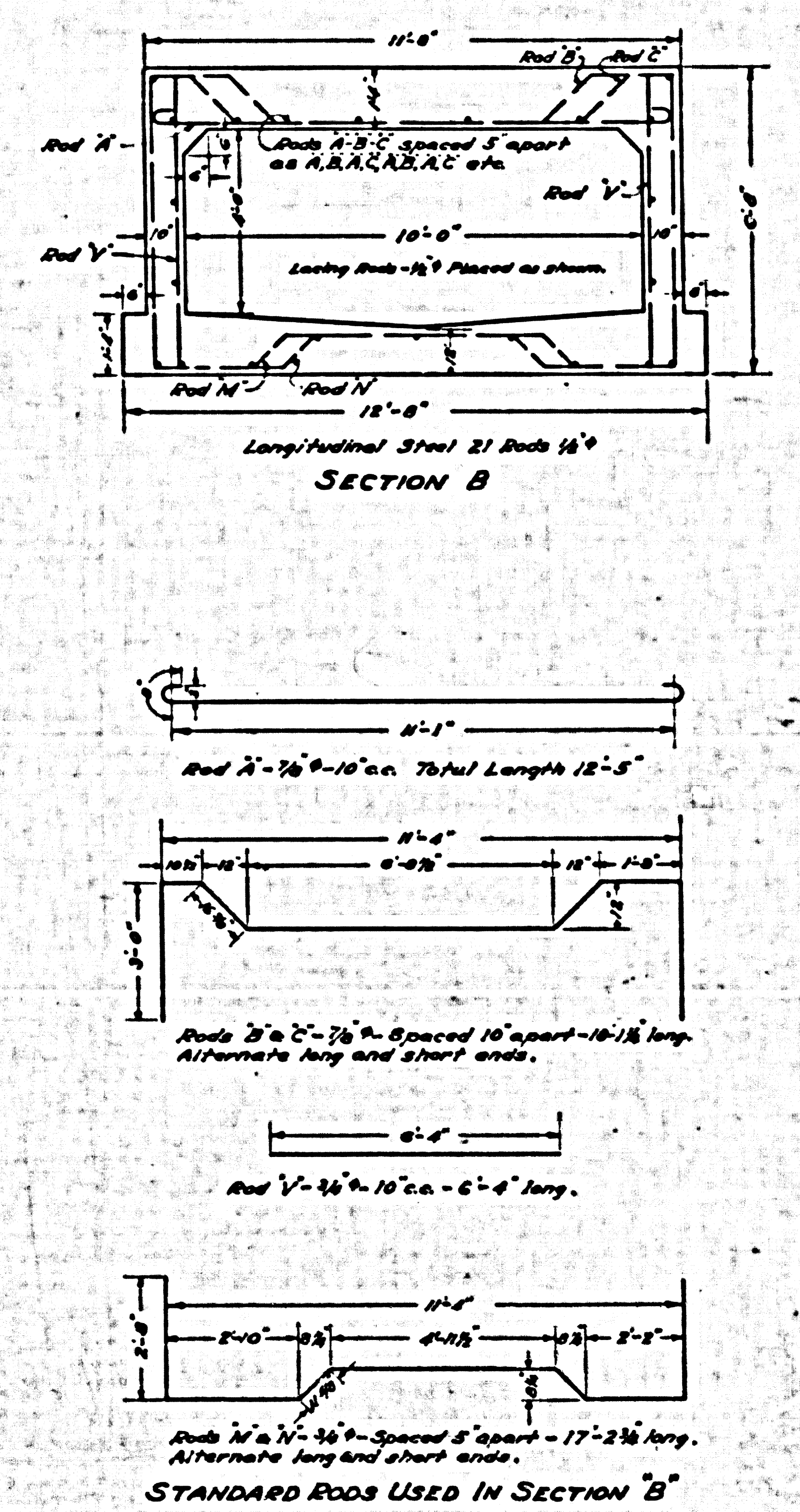
Trim to this Line

Print

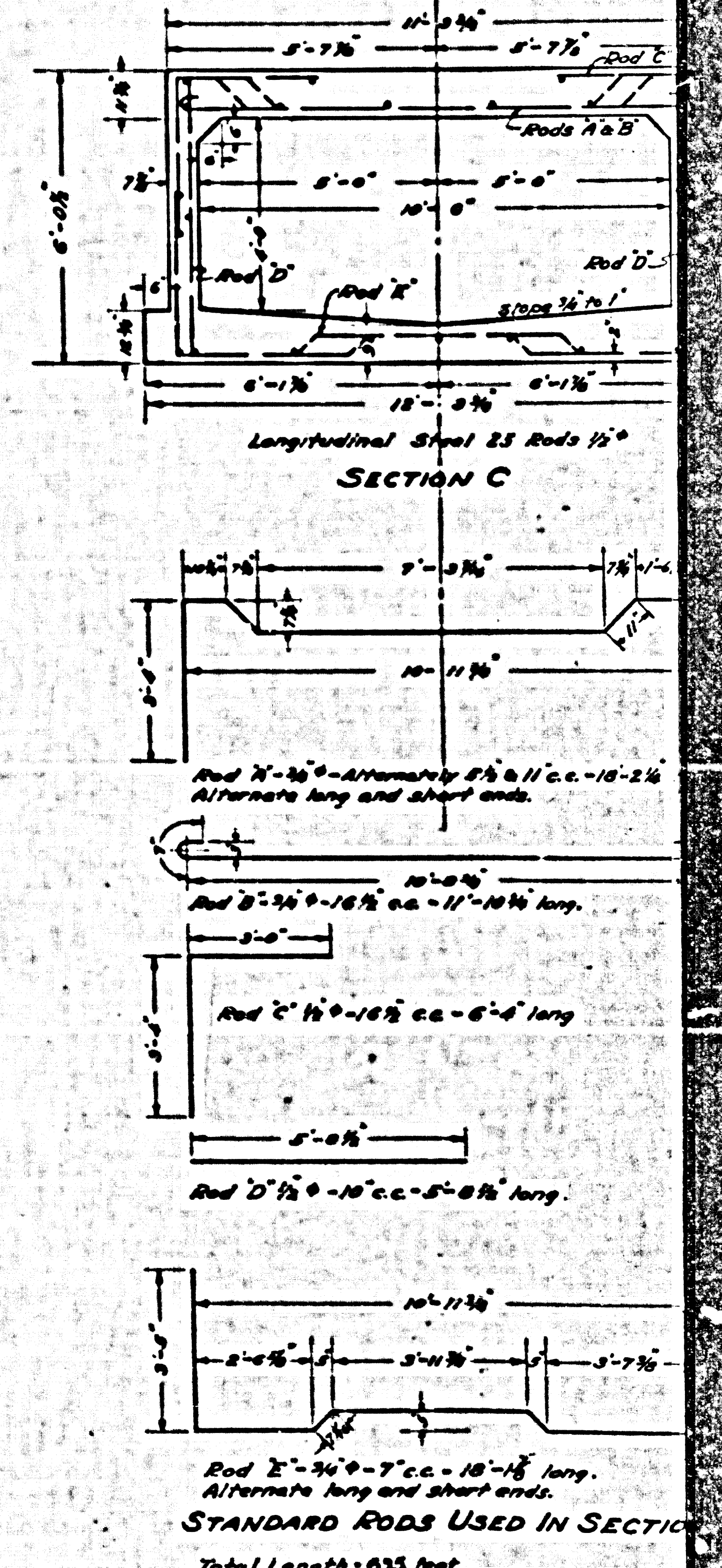
BUILDING OF WALL



REINFORCED CONCRETE BOX 10'-0" x 4'-0"
SECTION A - YUKON AVE. LINE.
STA. 0+11.27 TO 10+40.37
STA. 11+20.97 TO 42+00
Scale: 1/2"=1'



REINFORCED CONCRETE BOX 10'-0" x 4'-0"
SECTION B - YUKON AVE. LINE.
STA. 10+40.97 TO 11+20.97
Scale: 1/2"=1'



REINFORCED CONCRETE BOX 10'-0" x 4'-0"
SECTION C - YUKON AVE. LINE.
STA. 42+00 TO 48+35
Scale: 1/2"=1'

CSB-1164-6
A 3 OF A 3

Trim to this Line