

CS-1165-3 (11/11)
 50' x 10' x 10' x 10' x 10'
 in front No. #2297

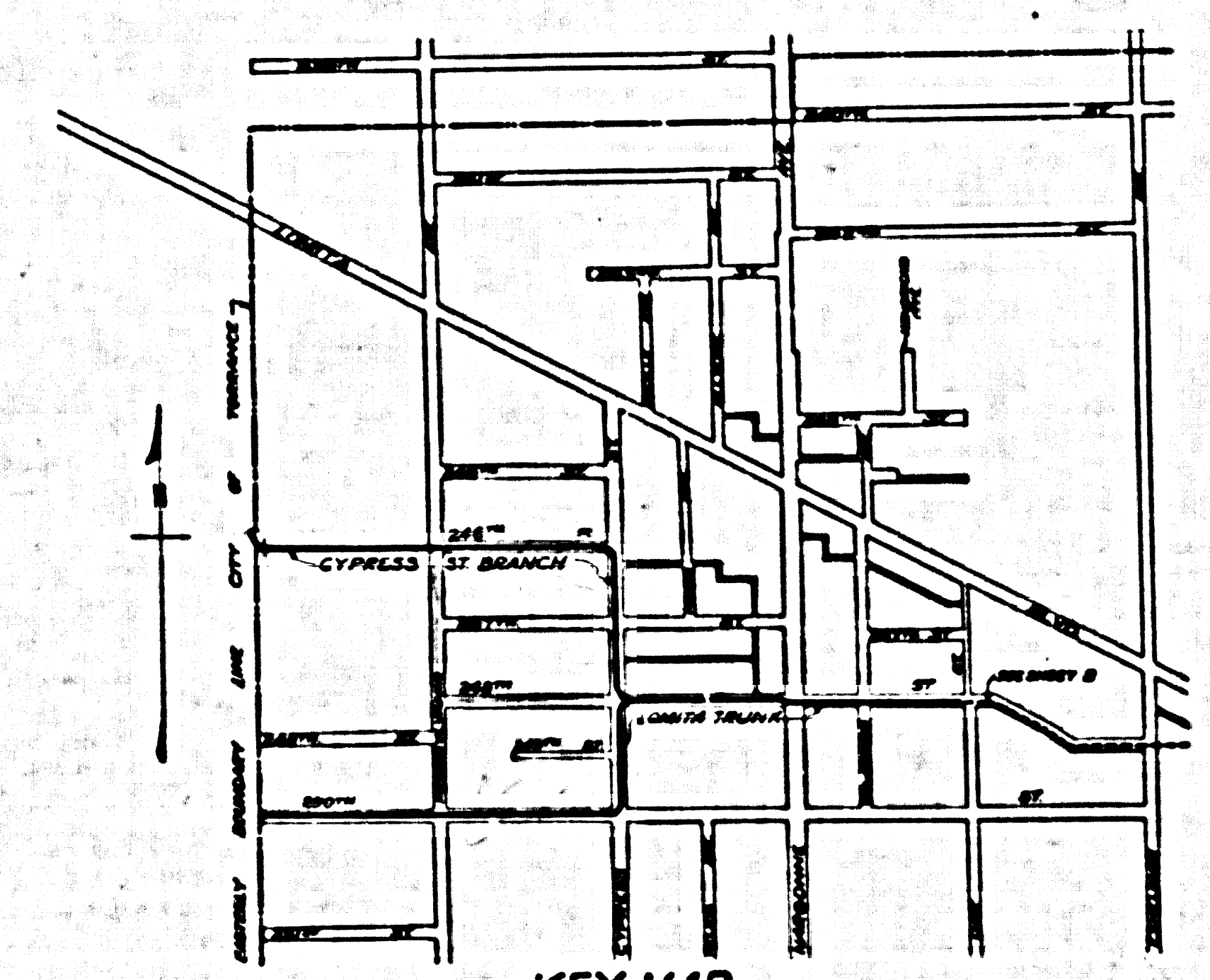
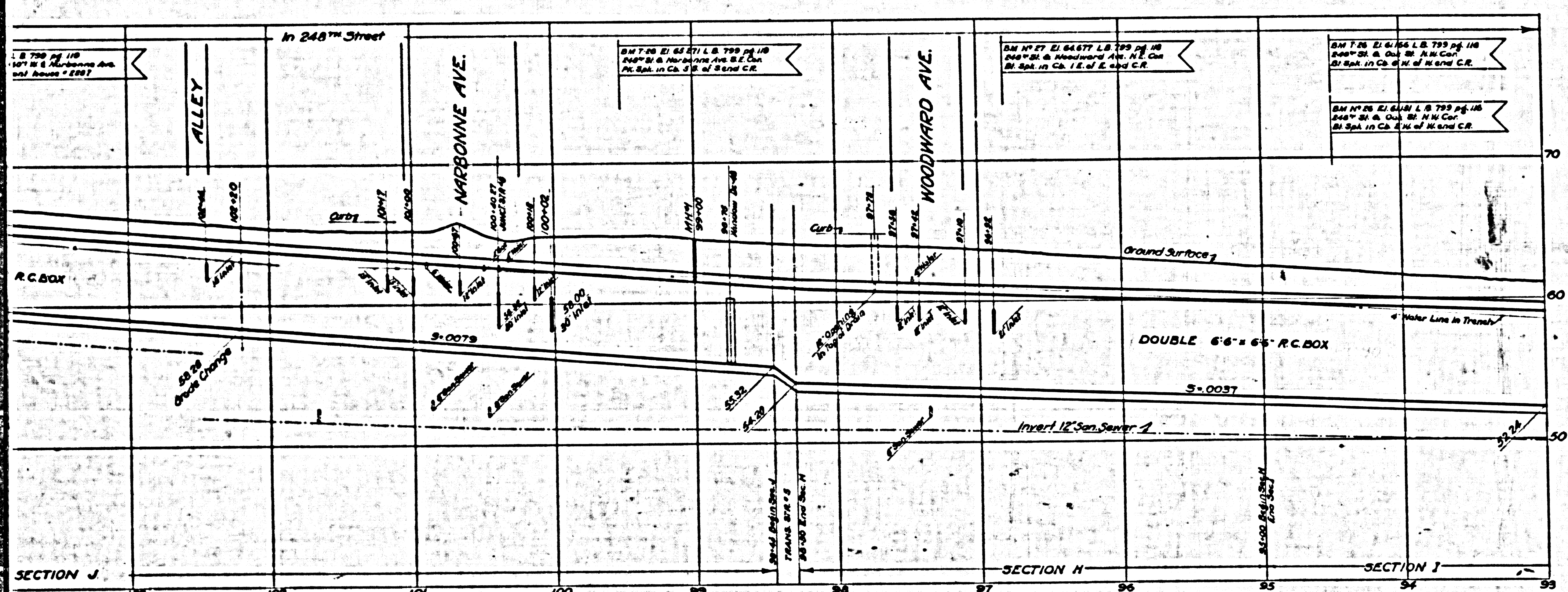
(E.M. F.S. Elev. 65.271 + 76.799 + 119
 248th St + Marbonne Ave. S.E. Cor.
 P.K. Spk. in Ch. 5' S. of S. and C.R.

(E.M. F.S. Elev. 64.677 + 77.799 + 119
 248th St + Woodward Ave. N.E. Cor.
 Bl' Spk. in Ch. 1' E. of E. and C.R.

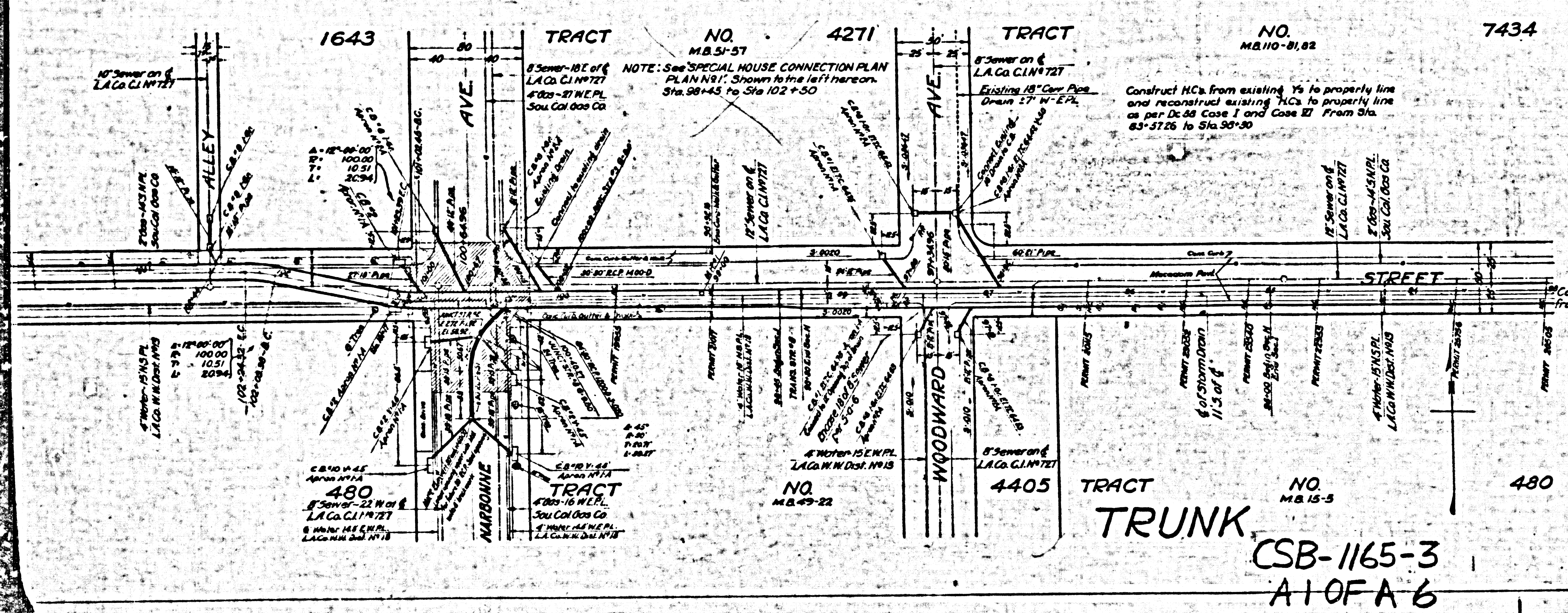
(E.M. F.S. Elev. 64.677 + 77.799 + 119
 248th St + Woodward Ave. N.E. Cor.
 Bl' Spk. in Ch. 1' W. of W. and C.R.

(E.M. F.S. Elev. 64.677 + 77.799 + 119
 248th St + Cal St. N.W. Cor.
 Bl' Spk. in Ch. 4' S.W. of W. and C.R.

Thin Prints to this Line



KEY MAP
 SHOWING DRAINAGE AND SURFACING
 SCALE 1" = 600'



NOTES:

Elevations are in feet above U.S.G.S. or Mean Sea Level Datum.
 Elevations of all Lateral Inlets refer to the intersection of the Inlet of the Lateral with the inside face of the main drain or structure.
 Stations of all Connector Pipe Inlets refer to the intersection of the center line of the connector pipe with the inside face of the main drain or structure. Bring connector pipes in radially to pipe drains where structures are not designated.
 Connector Pipes in Box Sections shall be laid in conjunction with Junction Structures N.P.4. (Standard D. 85) unless otherwise specified by the Engineer of Construction.
 Connector Pipe located under pavement with cover less than two feet shall be encased according to Case C4 (Standard D. 84).
 All Pipe not otherwise specified shall be Standard Strength Cement Concrete Pipe.
 For Structures marked SPEC. STR. N. or SECTION - see structural details on Special Structure and Box Section Sheet.
 All Structures not otherwise specified are Standard Structures. See details on Standard Plans.
 For details of cement concrete for Reinforced Concrete Arch Section see Standard D. 88.
 For details of reinforcing steel for Reinforced Concrete Arch Section see Standard D. 63.
 Elevations shown of Catch Basins refer to top of proposed curb of center line of basin if one elevation is given or at ends of basin if two elevations are given.
 Sanitary Sewers crossing over or with a clearance of 150 feet or less under Storm Drains shall be constructed or reconstructed as shown on Standard D. 84 except as otherwise specified on detail Sewer Plan.

LOMITA BOULEVARD DRAINAGE SYSTEM
 OF THE COUNTY OF LOS ANGELES, CALIFORNIA
 PLAN AND PROFILE OF

LOMITA TRUNK
 STA. 92+00 TO STA. 150+00
 CYPRESS STREET BRANCH
 STA. 1+10.15 TO STA. 14+65

SHEET 3 OF 8 SHEETS

DECEMBER 1938
 ALFRED JONES COUNTY SURVEYOR
 RECOMMENDED BY [Signature] APPROVED BY [Signature]

REFERENCE	DESIGNED	J.H. HARTLEY	FEB. 1935
F.R. 565	TRACED	J.H. RICE	MAR. 1935
L.B. 797	CHECKED	R.L. GREGORY	APR. 1935

3

Thin Prints to this Line

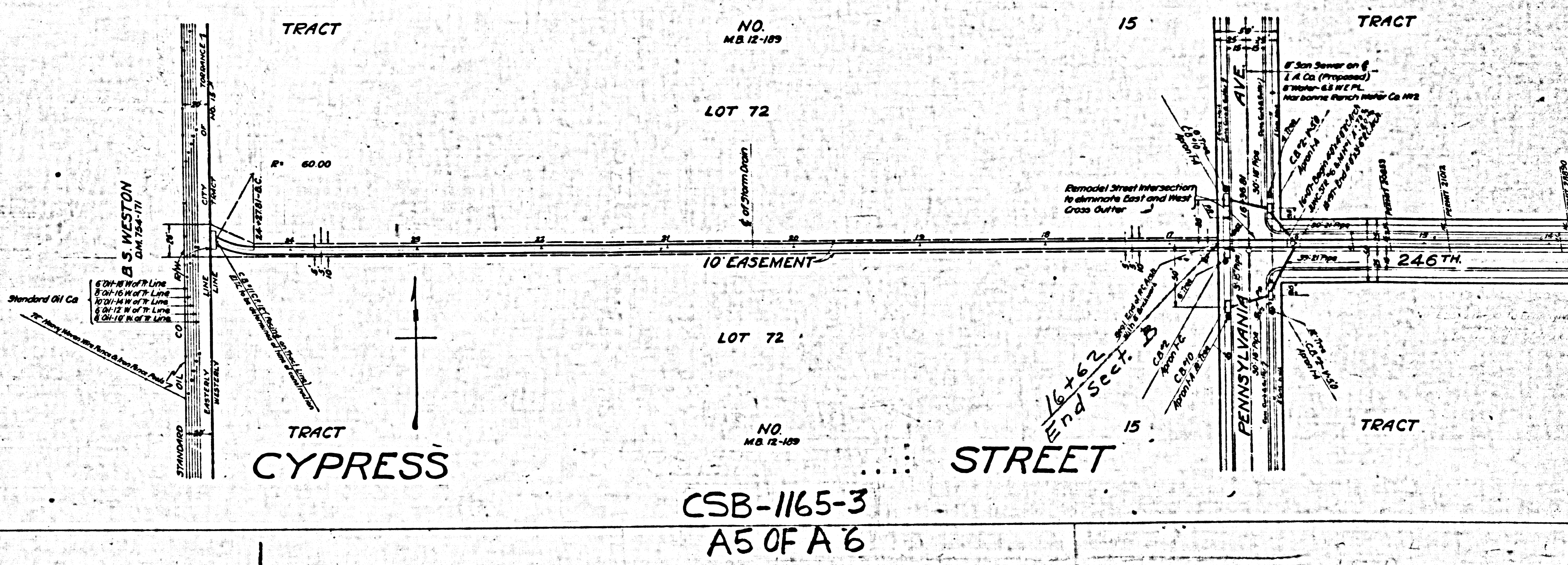
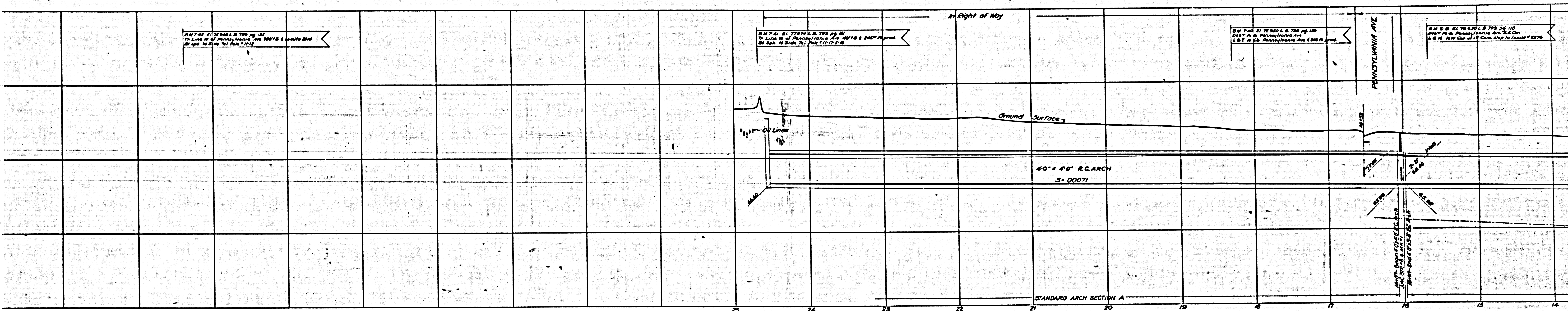
SHEET NO. 3 OF 8 SHEETS
 COUNTY SURVEYOR'S MAP NO. 1165

E7m. T-41 Elev. 75.482 #43 799 pg 132
 In line W. of Pennsylvania Ave 73'± S. E. of Point of Beginning
 157 Spk. N. side Tel. Pole # 11-172

E7m. T-41 Elev. 77.974 #43 799 pg 131
 In line W. of Pennsylvania Ave 43'± S. E. of Point of Beginning
 157 Spk. N. side Tel. Pole # 11-172

E7m. T-40 Elev. 72.950 #43 799 pg 130
 201'± W. of Pennsylvania Ave
 Lot W. Ch. Pennsylvania Ave 4'± W. of 157 Spk.

E7m. T-40 Elev. 73.650 #43 799 pg 131
 245'± W. of Pennsylvania Ave S.E. of
 Lot W. Ch. Pennsylvania Ave 4'± W. of 157 Spk.



SHEET NO. 3 OF 9 SHEETS
 COUNTY ENGINEERS MAP NO. B-11182

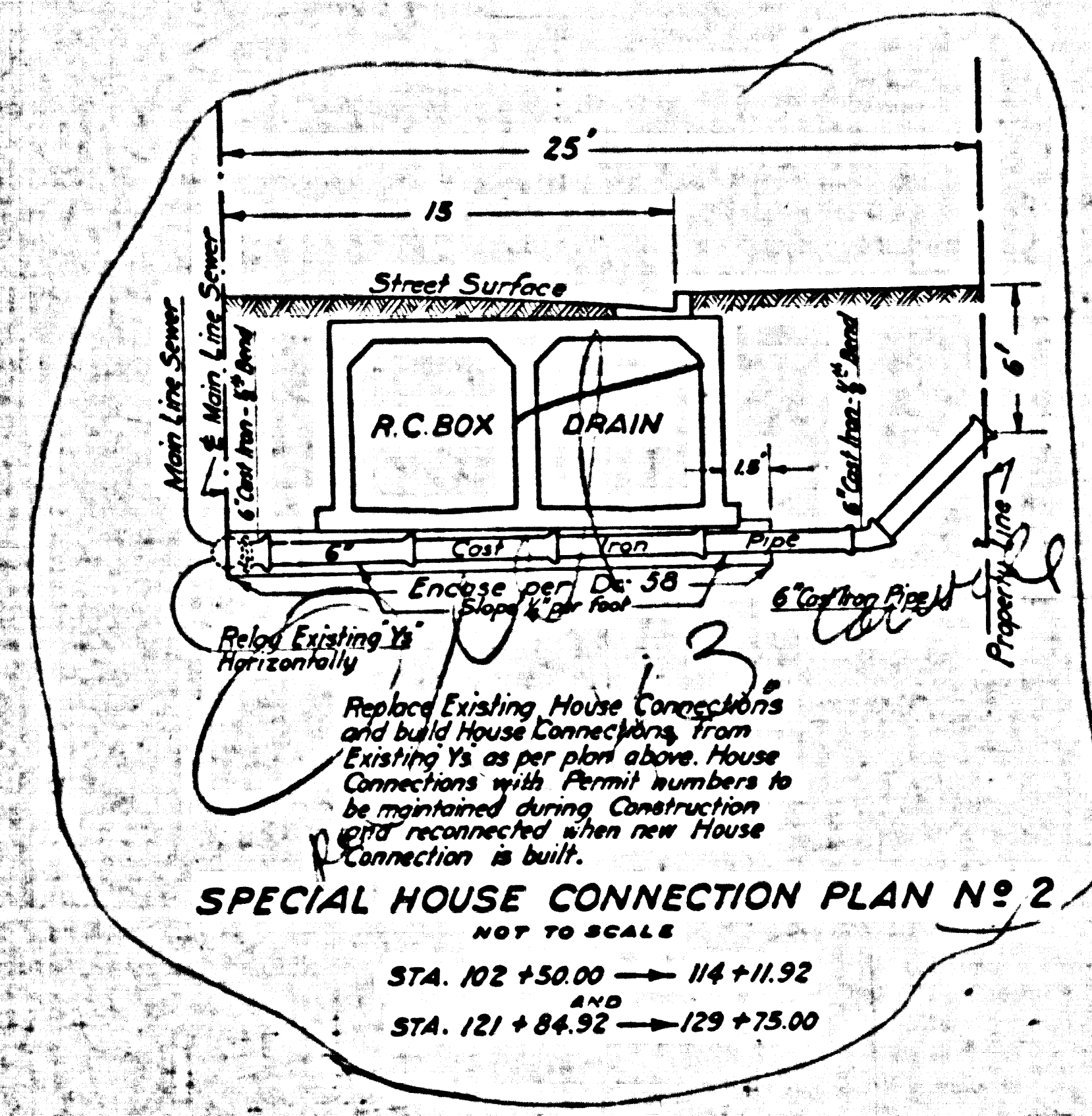
CEM T-45 Plan 74625 #67991133
 Lomita Blvd. 21' to 15' 80" N. of Perryman Ave
 PK Spk. on same base of W. gate post at grade

CEM T-44 Plan 78334 #67991132
 In line W. of Perryman Ave. to Lomita Blvd
 80' Spk. N. of Perryman Ave. 299237E, 15' N. Perryman Ave.

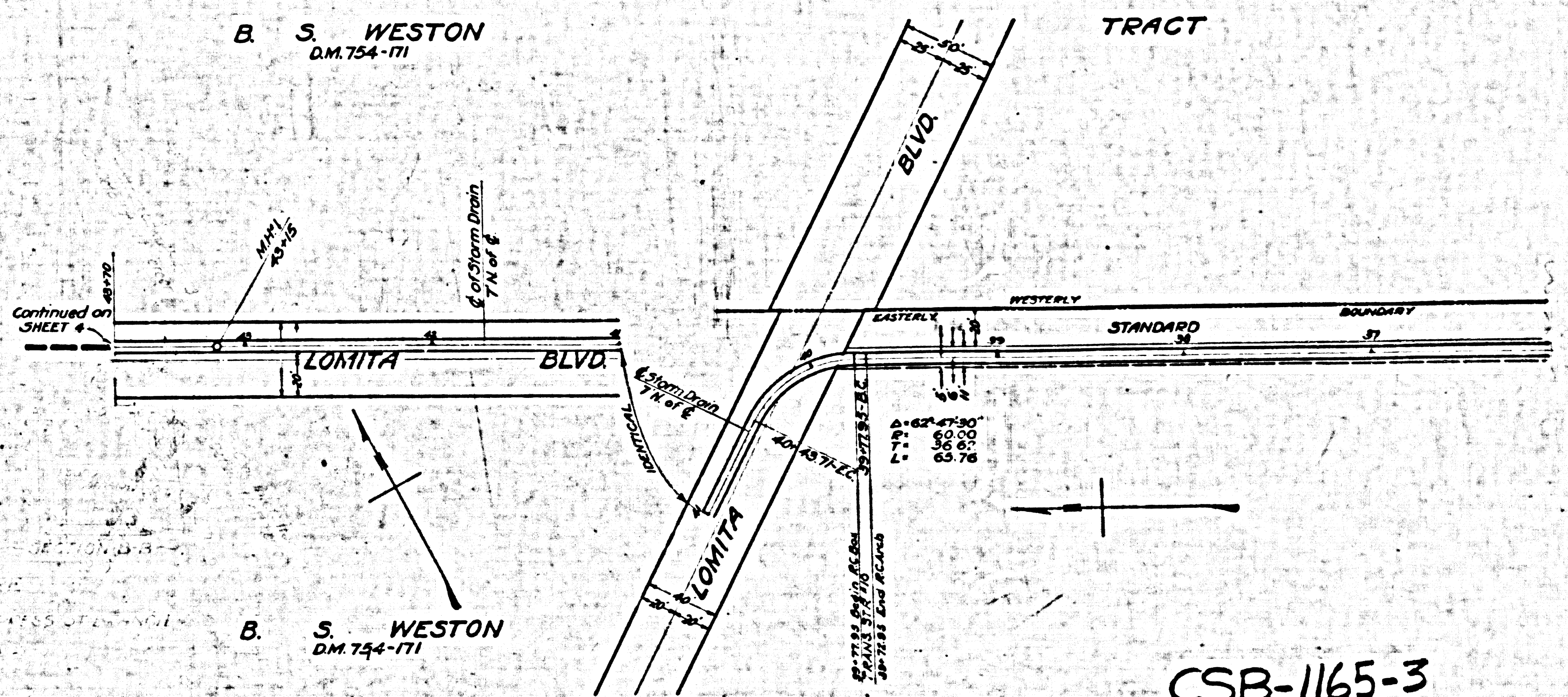
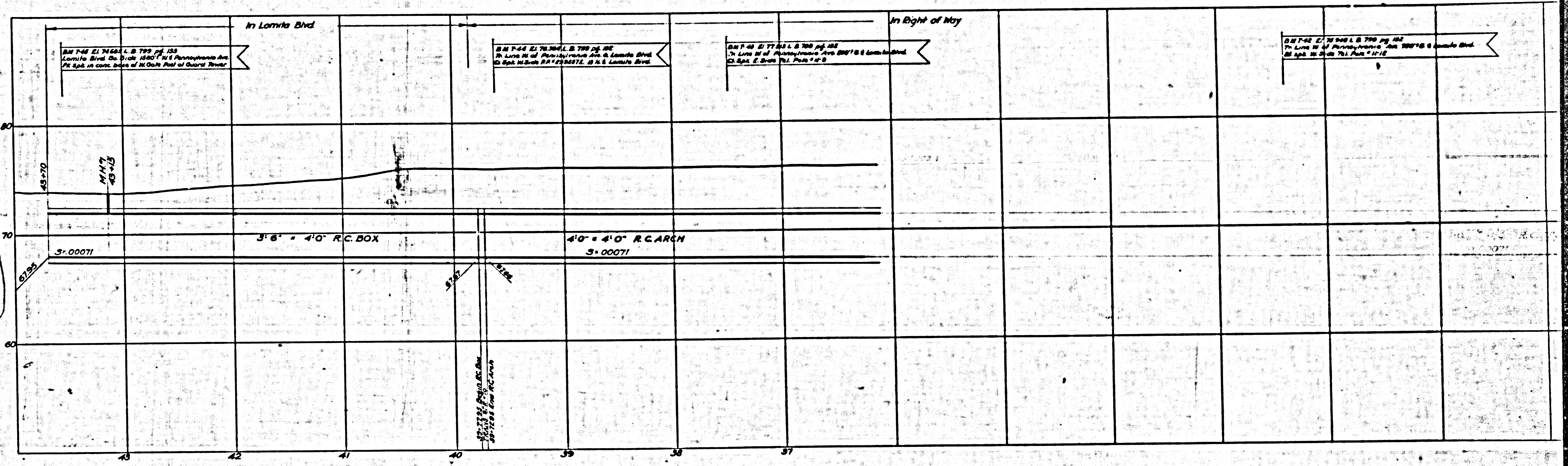
CEM T-43 Plan 77313 #67991132
 In line W. of Perryman Ave. 250' S. of Lomita Blvd
 80' Spk. E. of Perryman Ave. Tol. pole # 11-9

CEM T-42 Plan 7548 #67991132
 In line W. of Perryman Ave. 730' S. of Perryman Ave.
 157' Spk. N. of Perryman Ave. Tol. pole # 11-12

Trim Prints to this Line



INDEX
 Lines Shown on this Sheet
 Existing from left to Right
PLAN AND PROFILE
CYPRESS STREET BRANCH
 STA. 10+00 TO STA. 13+70
LOMITA TRUNK
 STA. 93+00 TO STA. 100+10



CSB-1165-3
 A60FA6

Trim Prints to this Line

