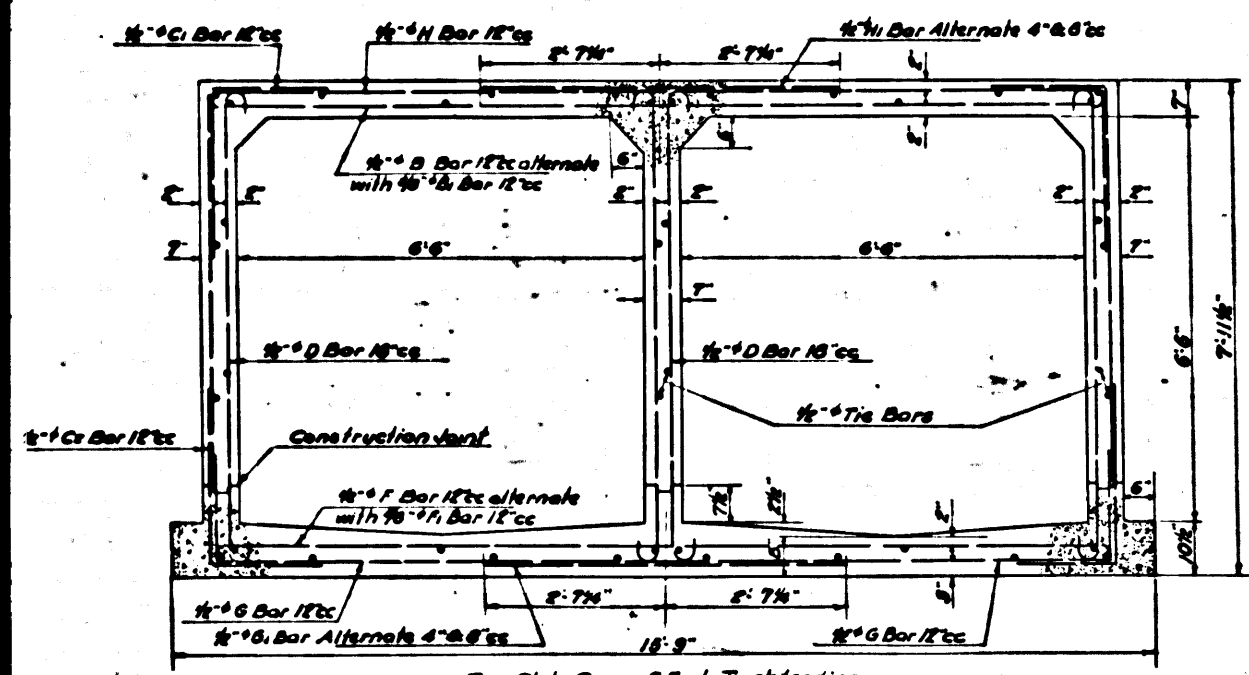
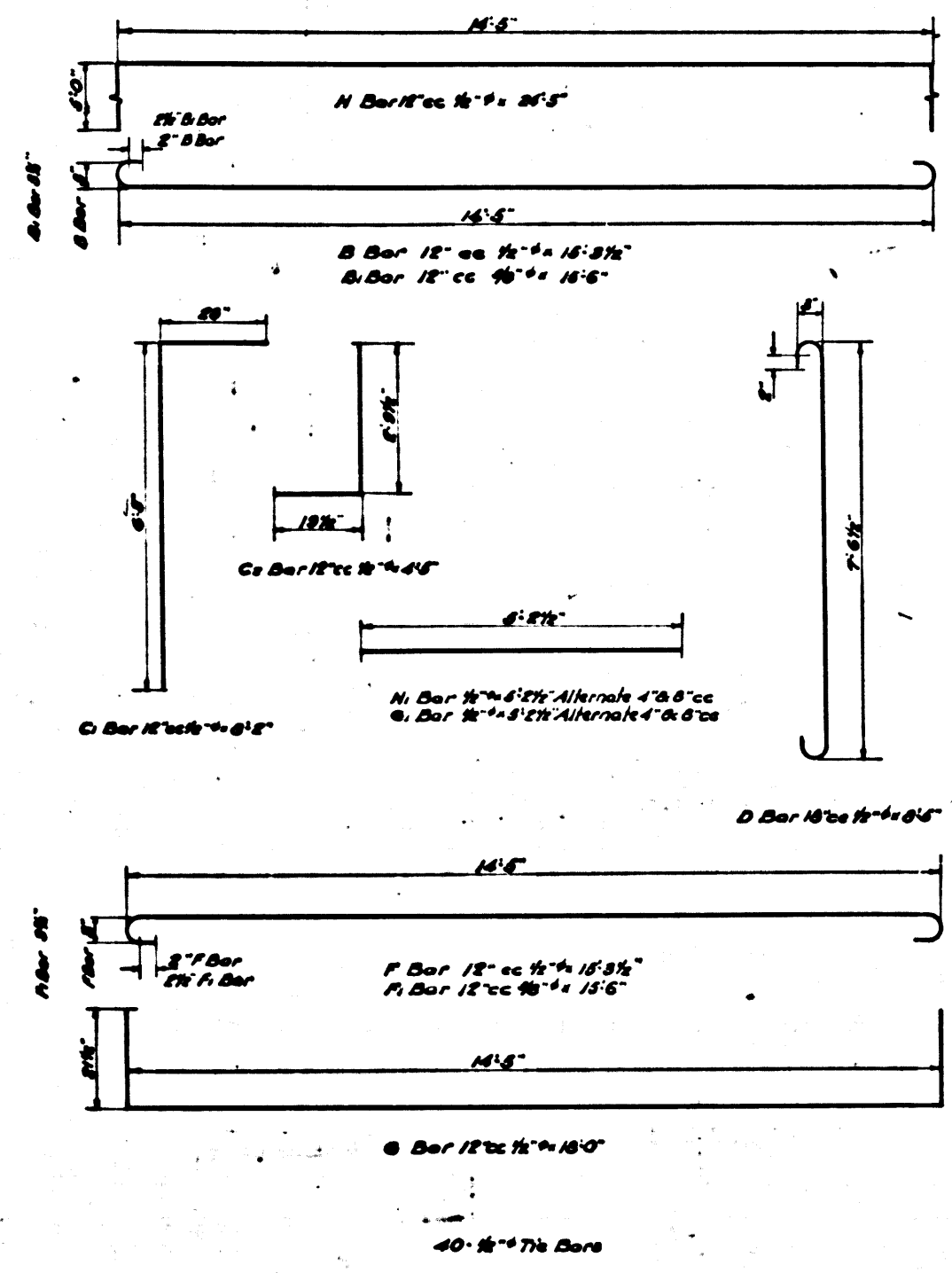


SHEET NO. 4 OF 8 SHEETS
CONSULT SURVEYORS W&B NO. B-1182

COUNTY ENGINEER'S OFFICE

SHEET NO. 4 OF 8 SHEETS
CONSULT SURVEYORS W&B NO. B-1182



SECTION H
REINF. CONC. BOX 2'-6" x 6'-6"
LOMITA TRUNK
Scale: 1/4" = 1'-0"

NOTES:

Elevations are in feet above U.S.S. or mean Sea Level Datum.
All Cement Concrete shall be Class 'A' unless otherwise specified.
Dimensions for depth of Reinforcing Steel are from face of concrete to center of bars.
Reinforcing Bars shall be round deformed bars of intermediate grade Billet Steel or Rail Steel unless otherwise specified, and at all splices shall be lapped 36 bar diameters.
Weep Holes 1/4 inch in diameter spaced not more than 5 feet each way shall be placed in each side wall of structure unless otherwise specified.
For arrangement of Drain Tile under Structures see Standard Dc-43, and for details of windows in interior walls of multiple Box Sections see Standard Dc-48.

Note: This set of Plans consists of: Sheet No. 1
2
3
4
5

CSB-1165-4-A
A1 OF A4

LOMITA BOULEVARD DRAINAGE SYSTEM

OF THE COUNTY OF LOS ANGELES CALIFORNIA

DETAILS OF BOX SECTIONS AND SPECIAL STRUCTURES

SHEET 4A OF 8 SHEETS

SCALE AS SHOWN OCT. 1943.

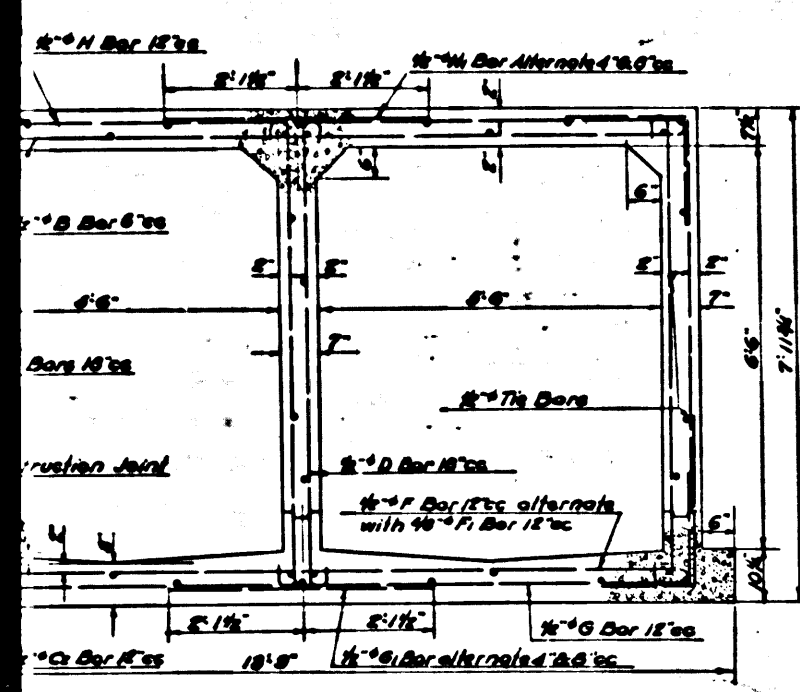
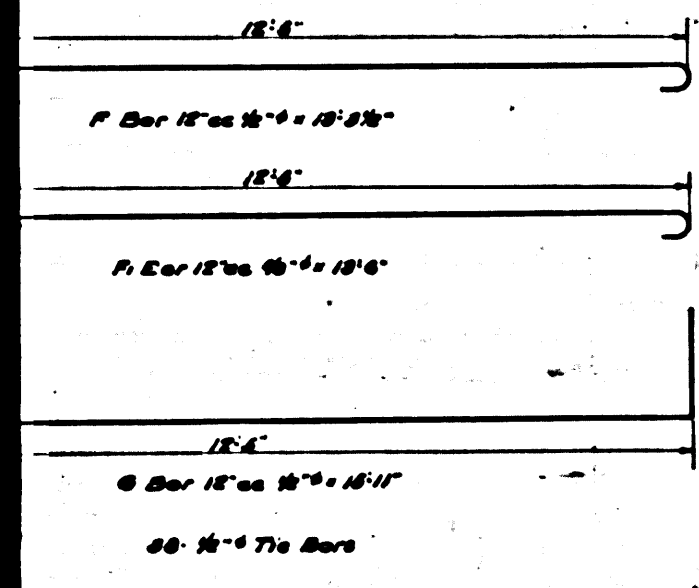
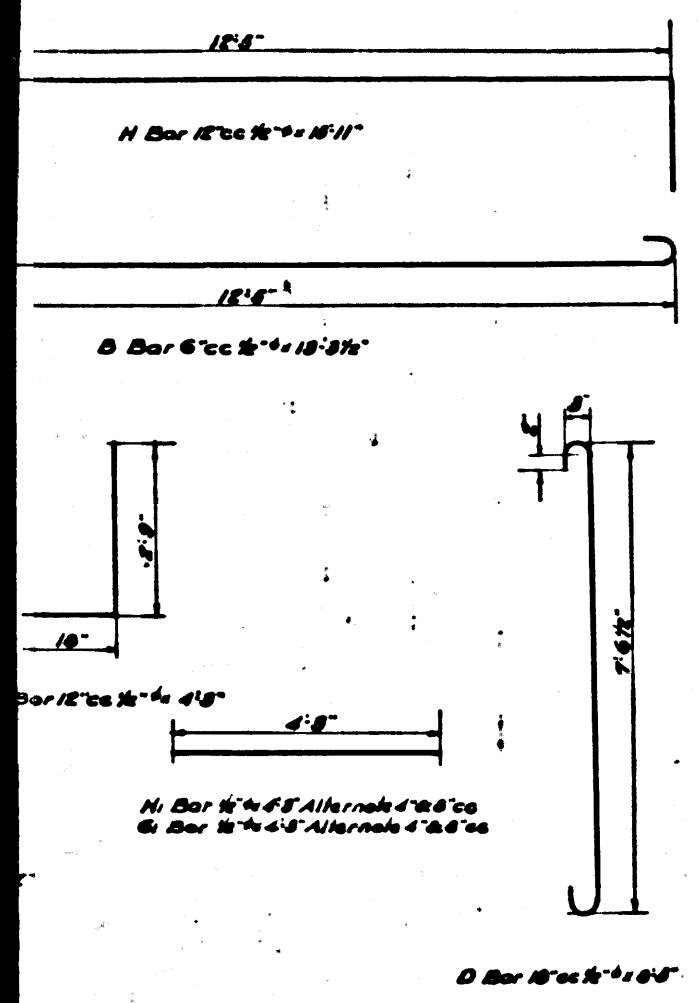
ALFRED JONES - COUNTY ENGINEER

RECOMMENDED: *E. J. ...* APPROVED: *Alfred Jones*
CHIEF DEPUTY COUNTY ENGINEER

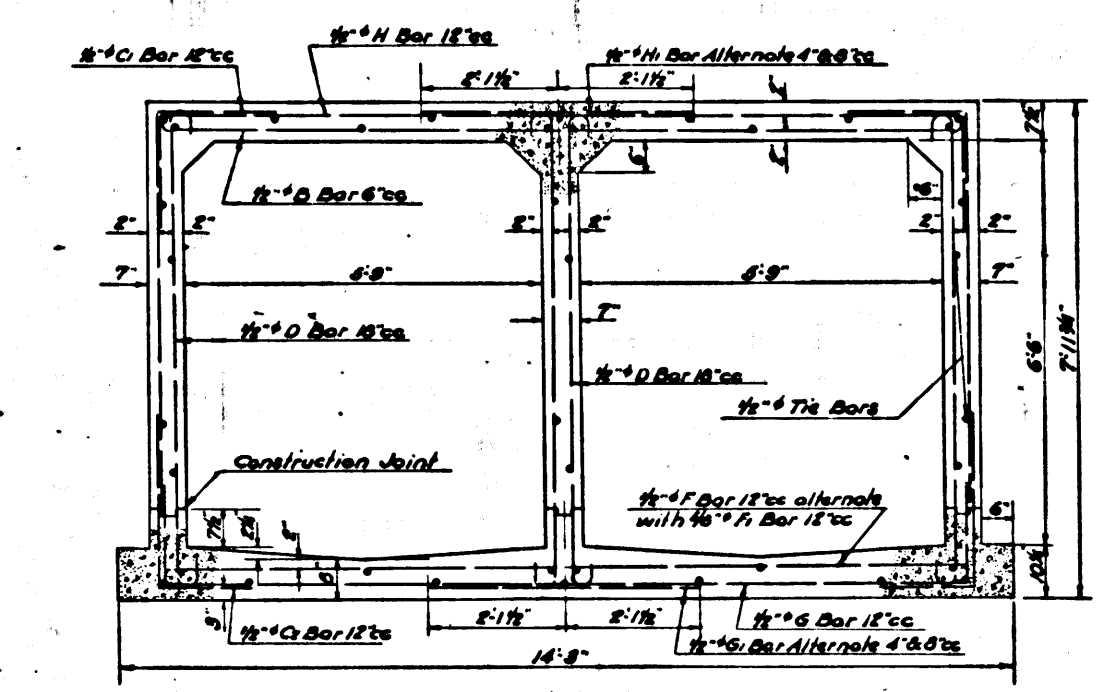
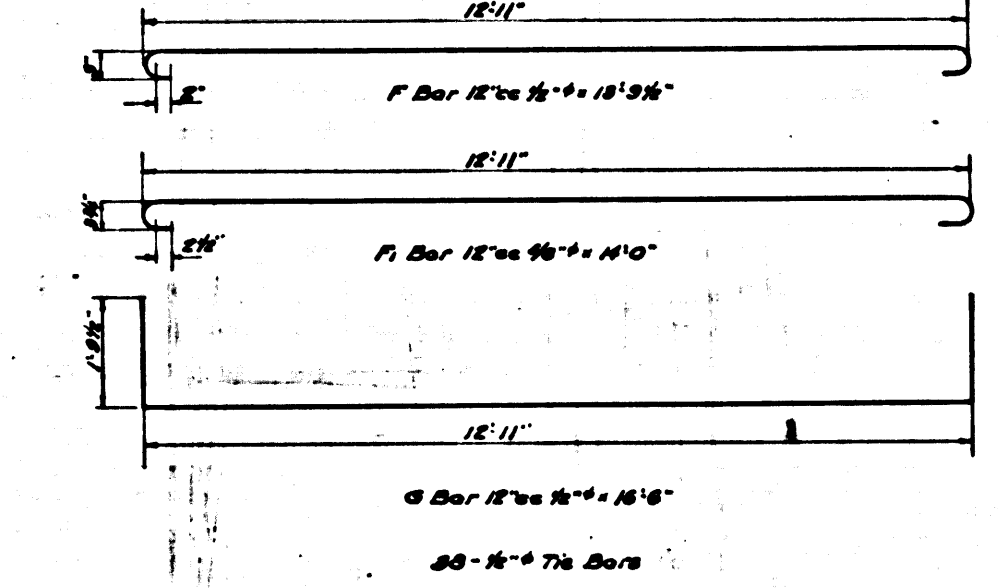
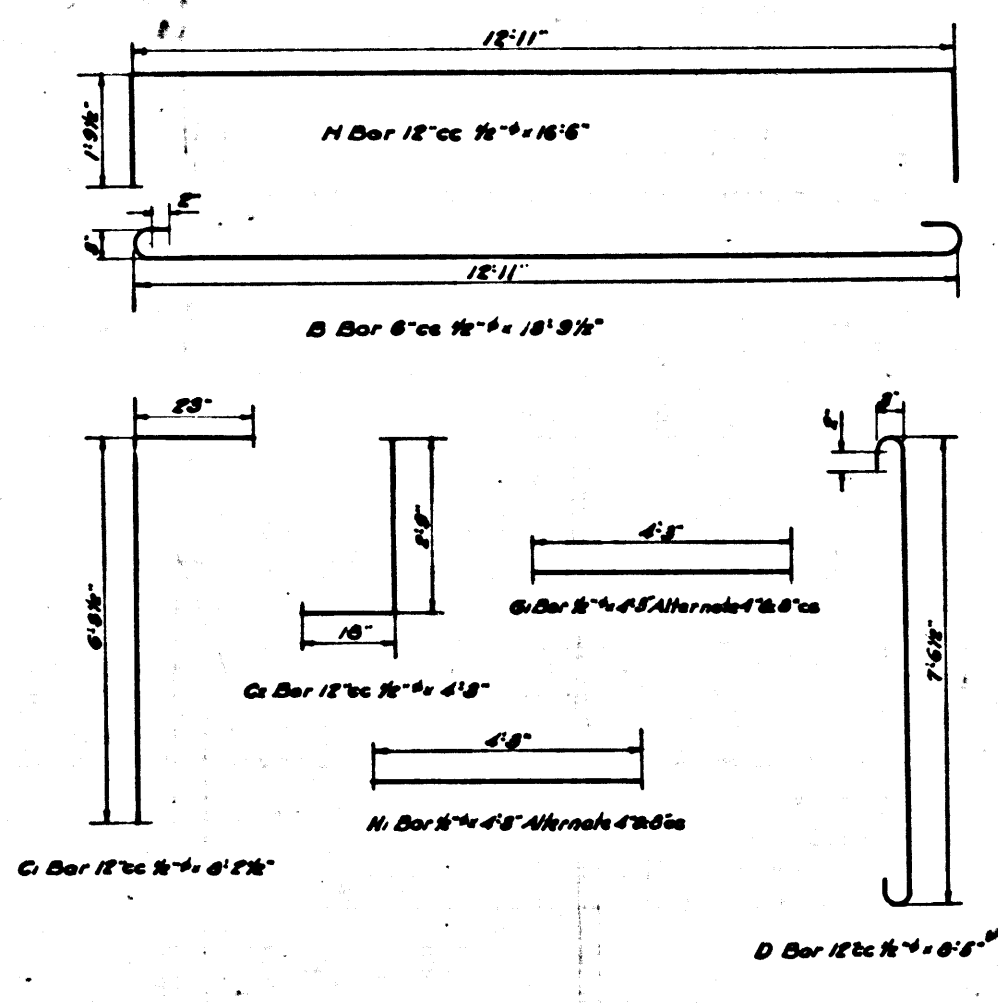
THIS DRAWING AND THE DATA HEREON ARE HEREBY MADE A PART OF THE SPECIFICATIONS

REFERENCE	DESIGNED	CHECKED	DATE
	C. GREEN WAKAUFMAN	J. H. RICE	OCT. 48.
	W. F. BRUSHNER		OCT. 48.
		J. H. RICE	OCT. 48.

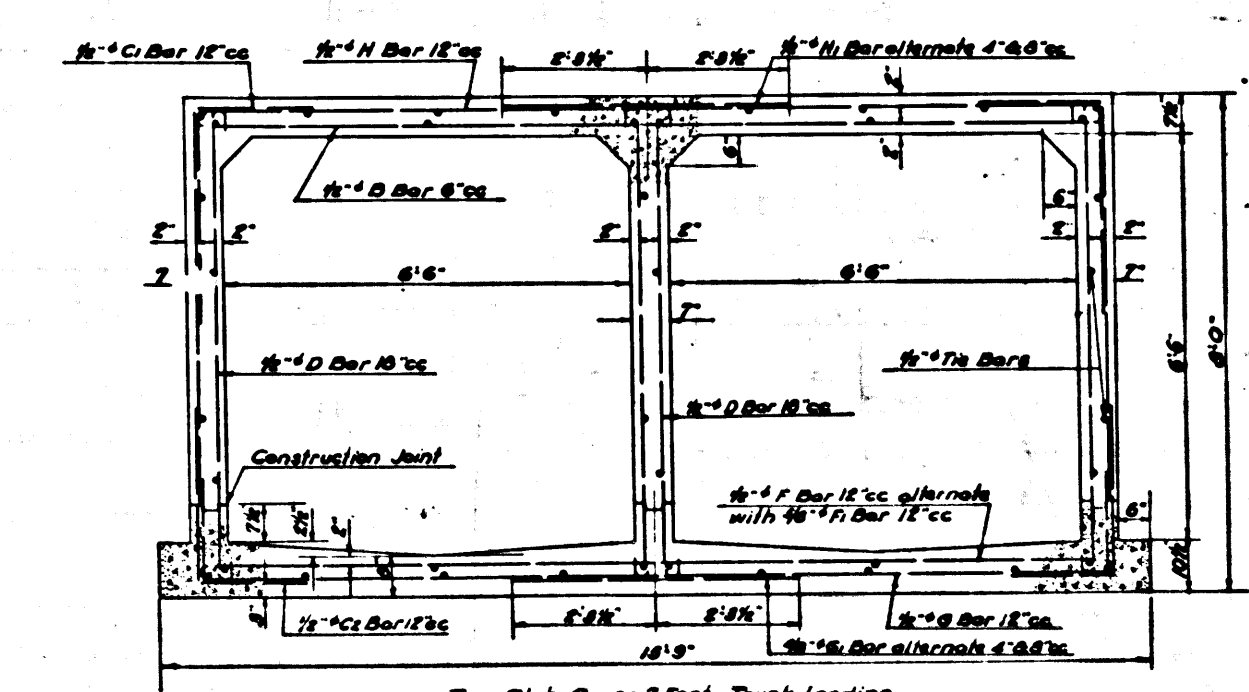
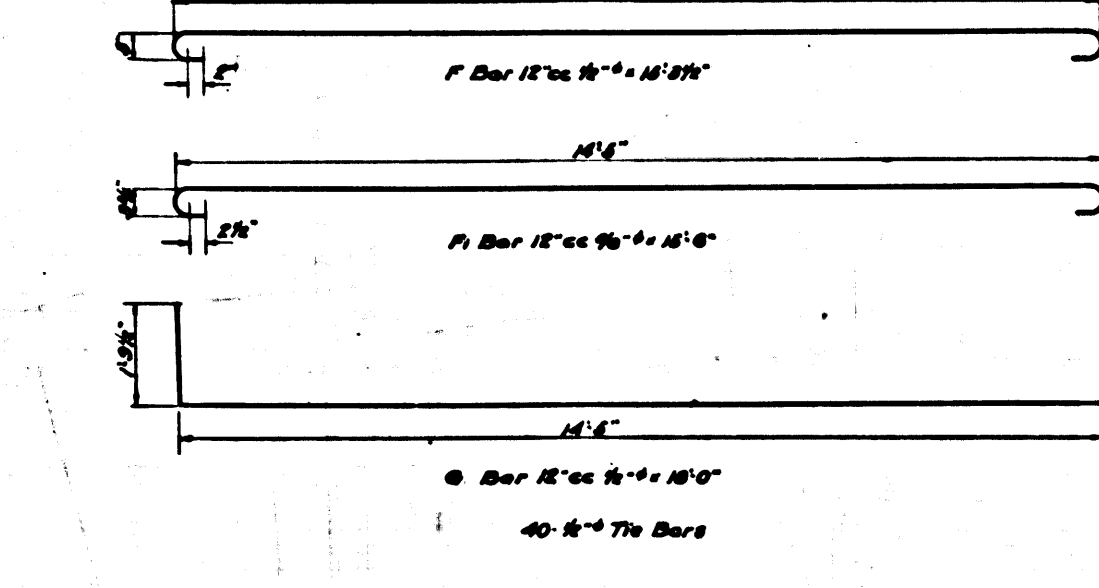
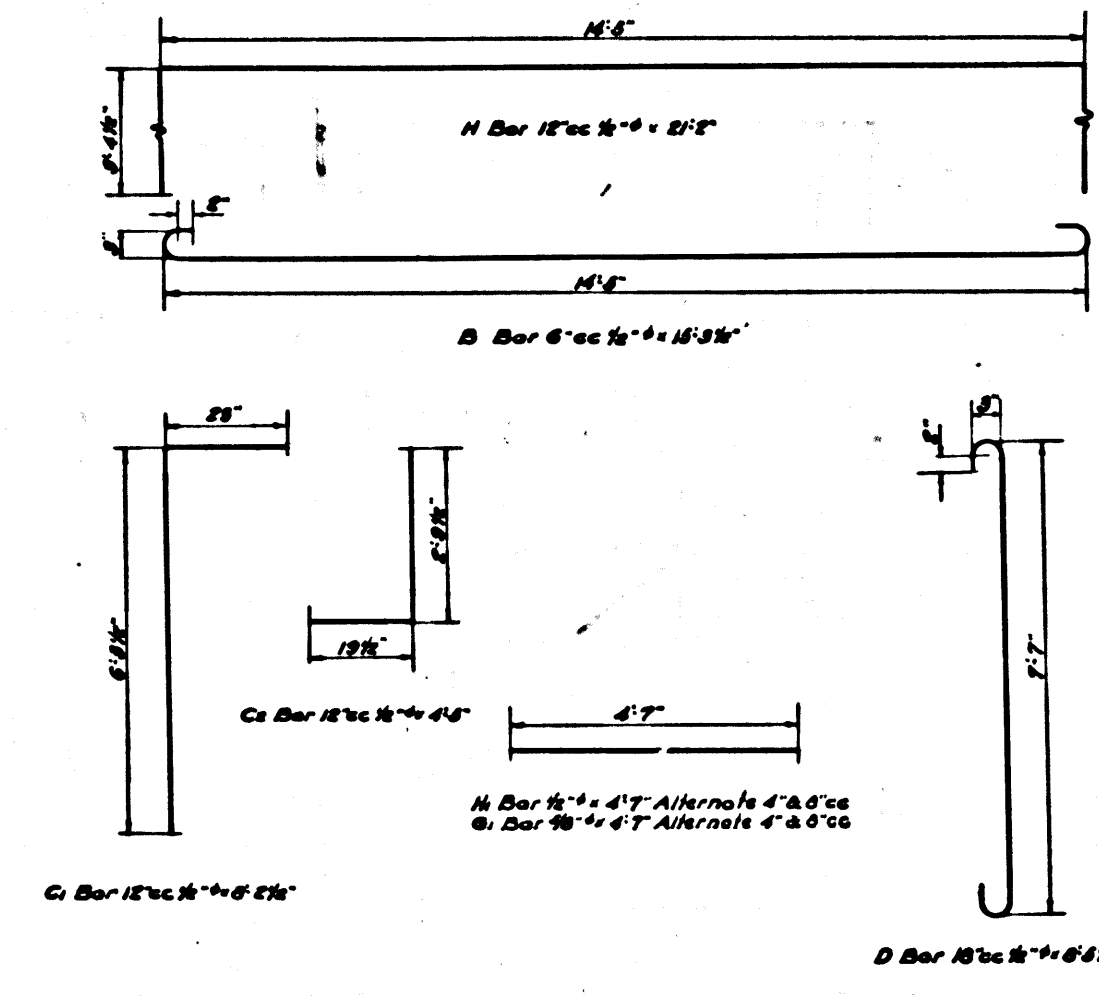
4A



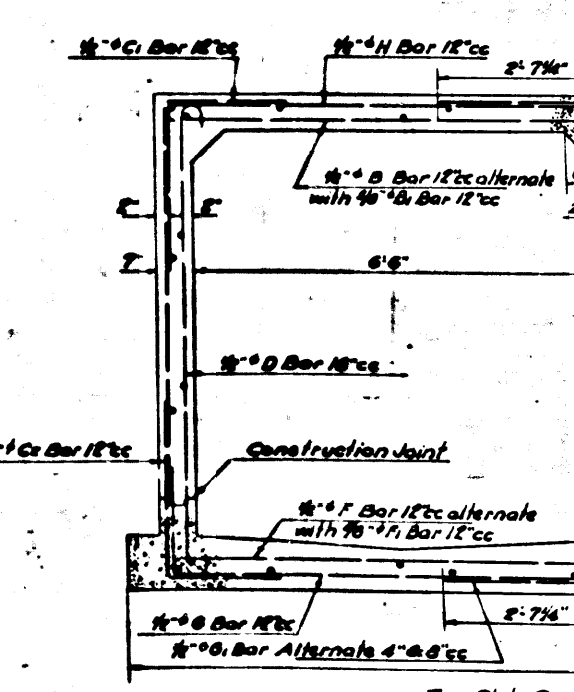
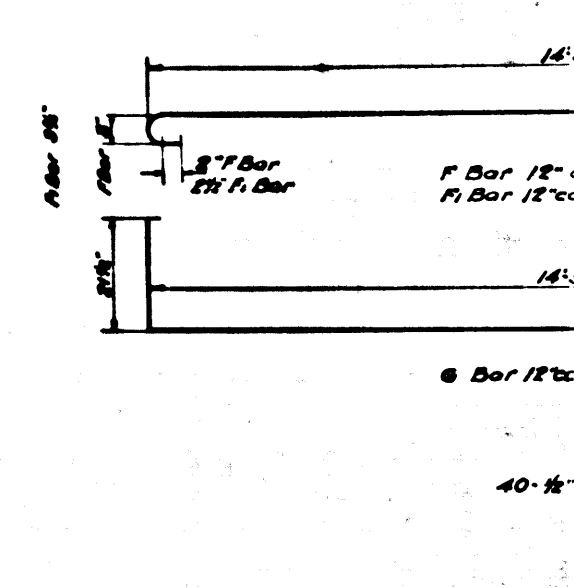
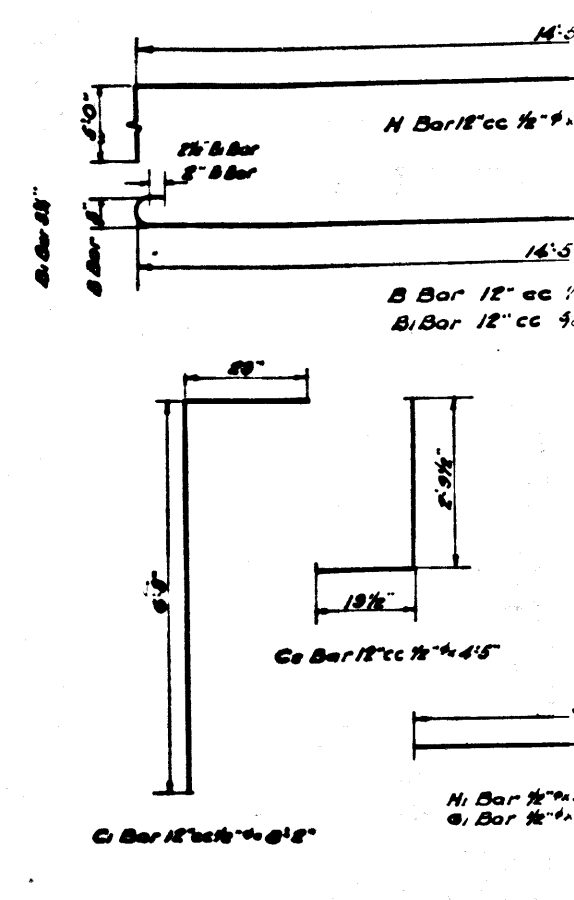
SECTION K
 REINF. CONC. BOX 2-5'6"x6'6"
 LOMITA TRUNK
 Scale: 1/4" = 1'-0"



SECTION J
 REINF. CONC. BOX 2-5'9"x6'6"
 LOMITA TRUNK
 Scale: 1/4" = 1'-0"

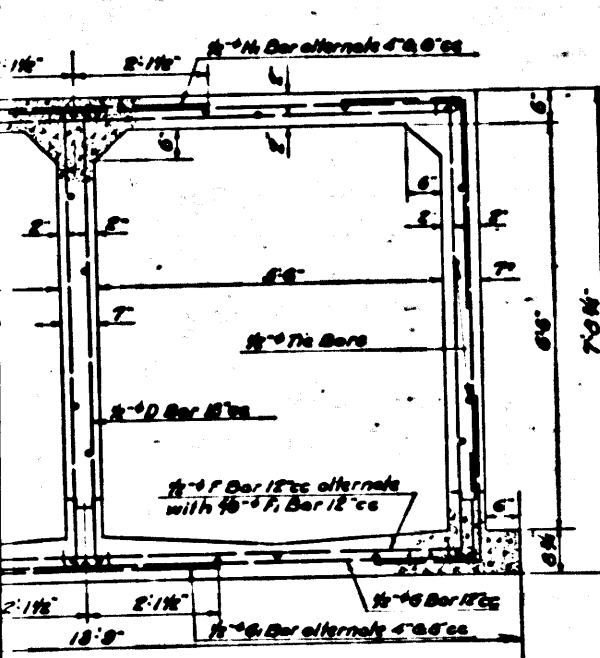
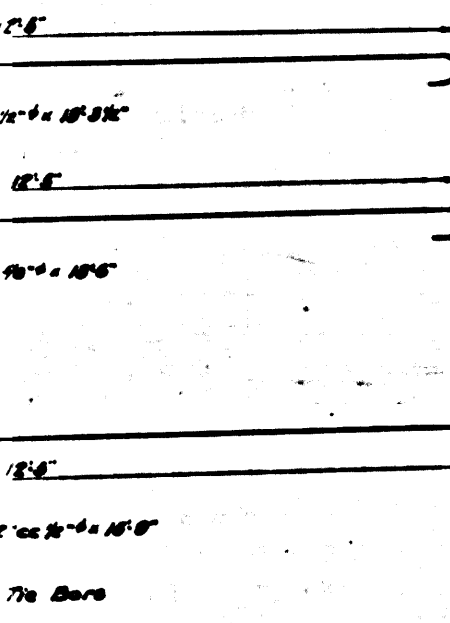
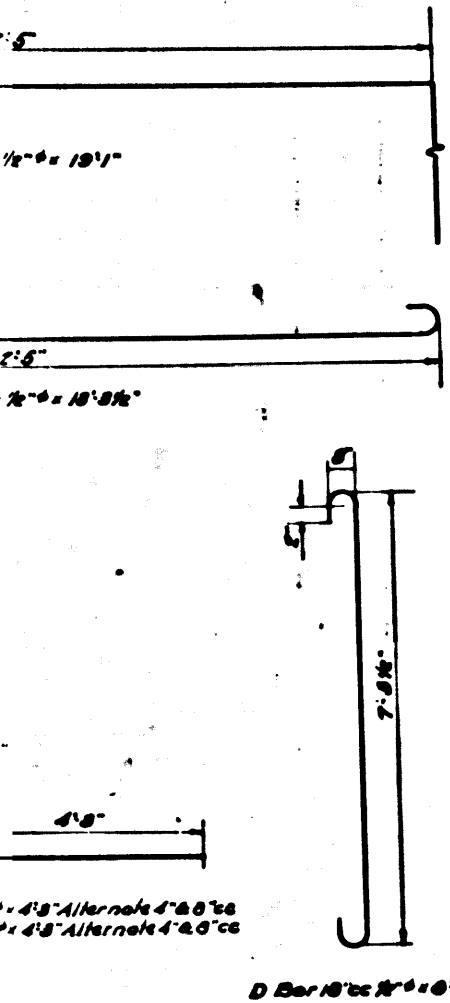


SECTION I
 REINF. CONC. BOX 2-6'5"x6'6"
 LOMITA TRUNK
 Scale: 1/4" = 1'-0"

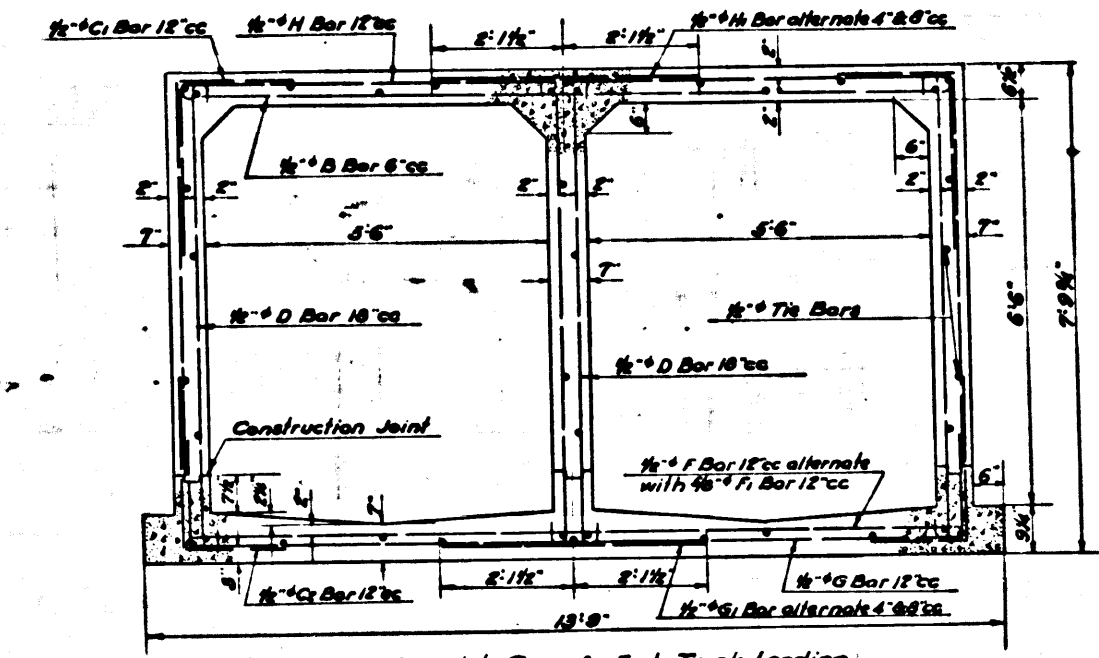
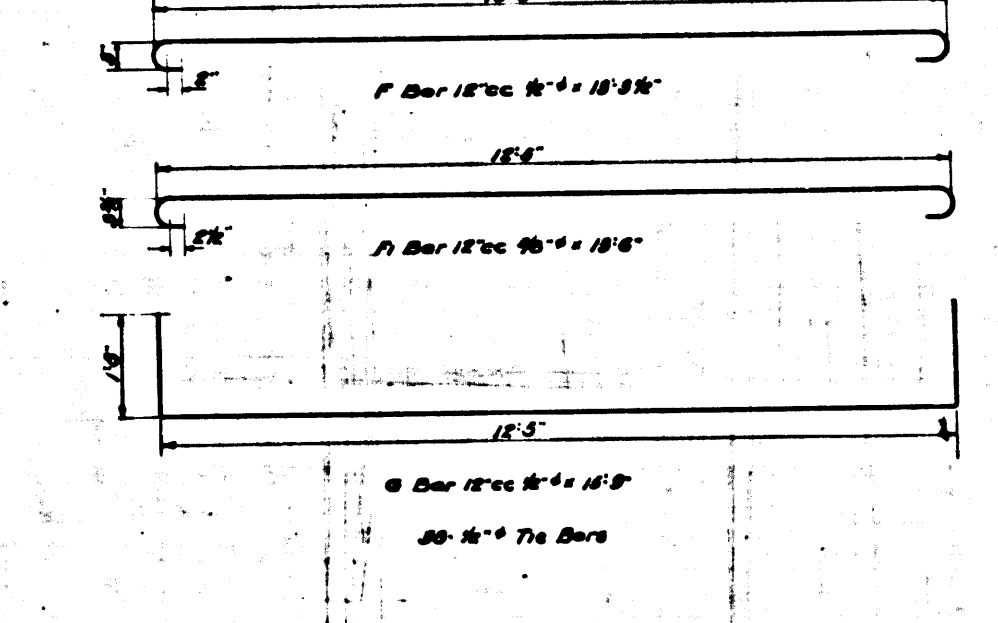
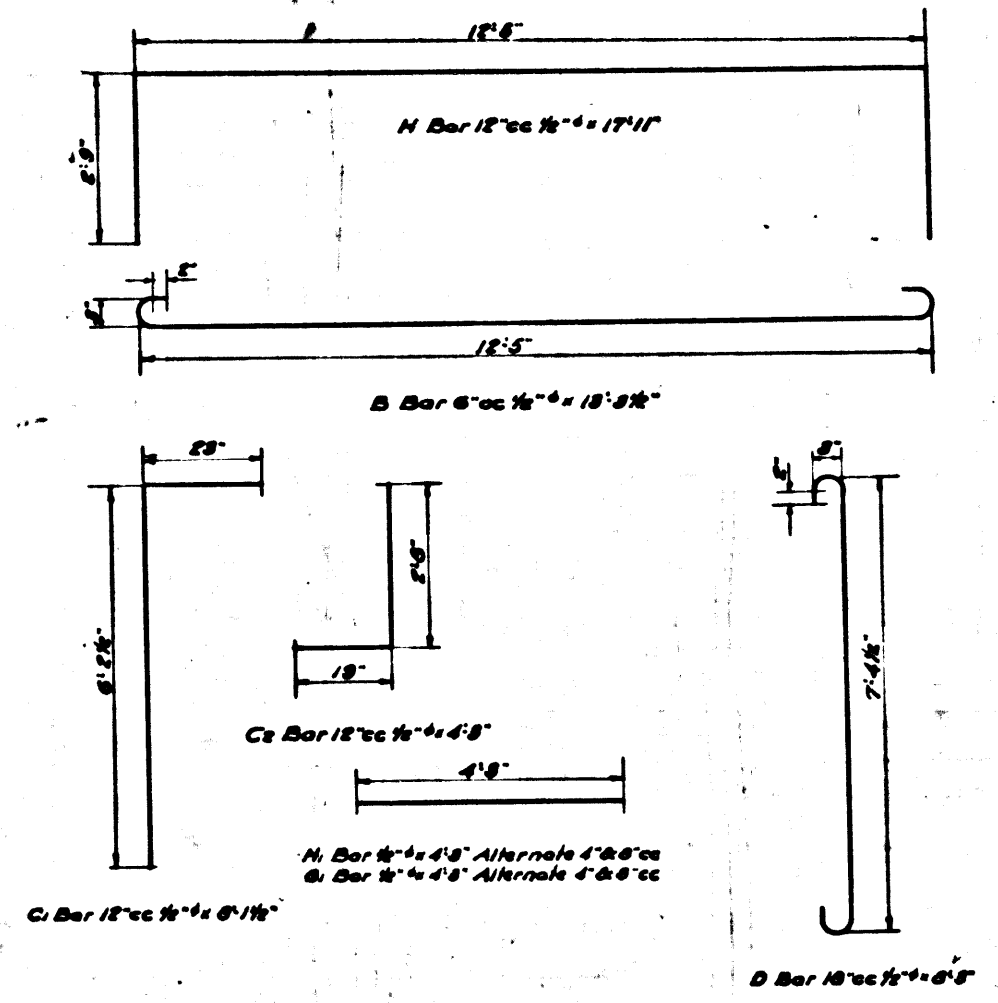


SECTION I
 REINF. CONC. BOX 2-6'5"x6'6"
 LOMITA TRUNK
 Scale: 1/4" = 1'-0"

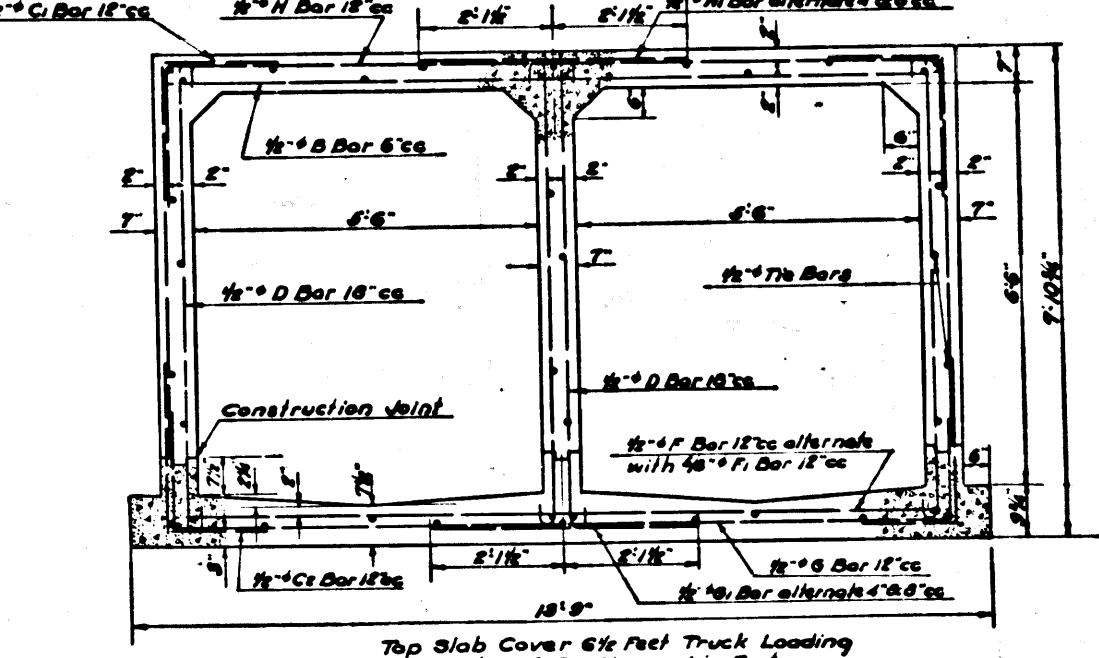
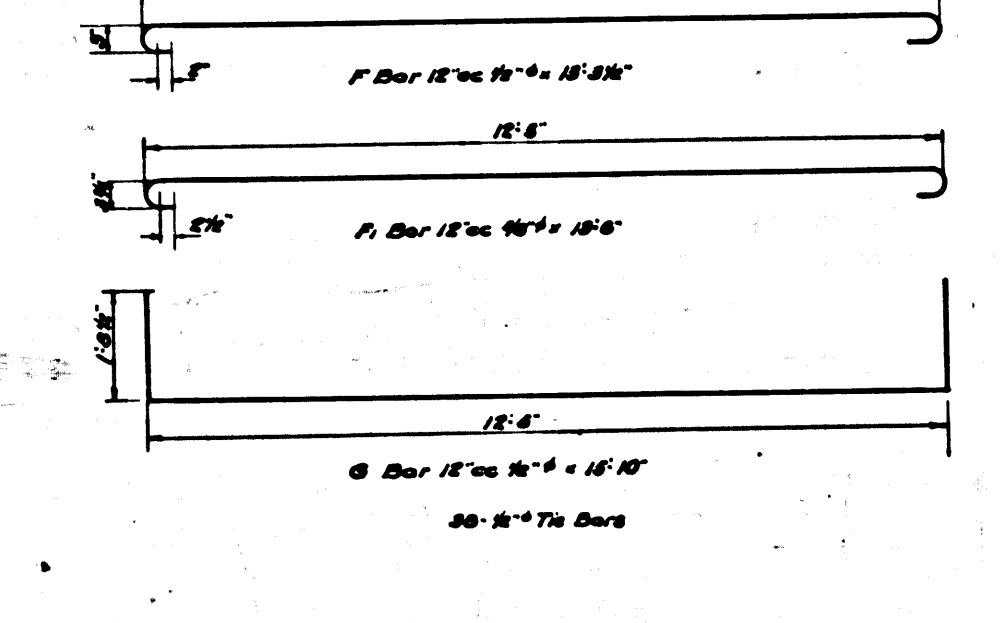
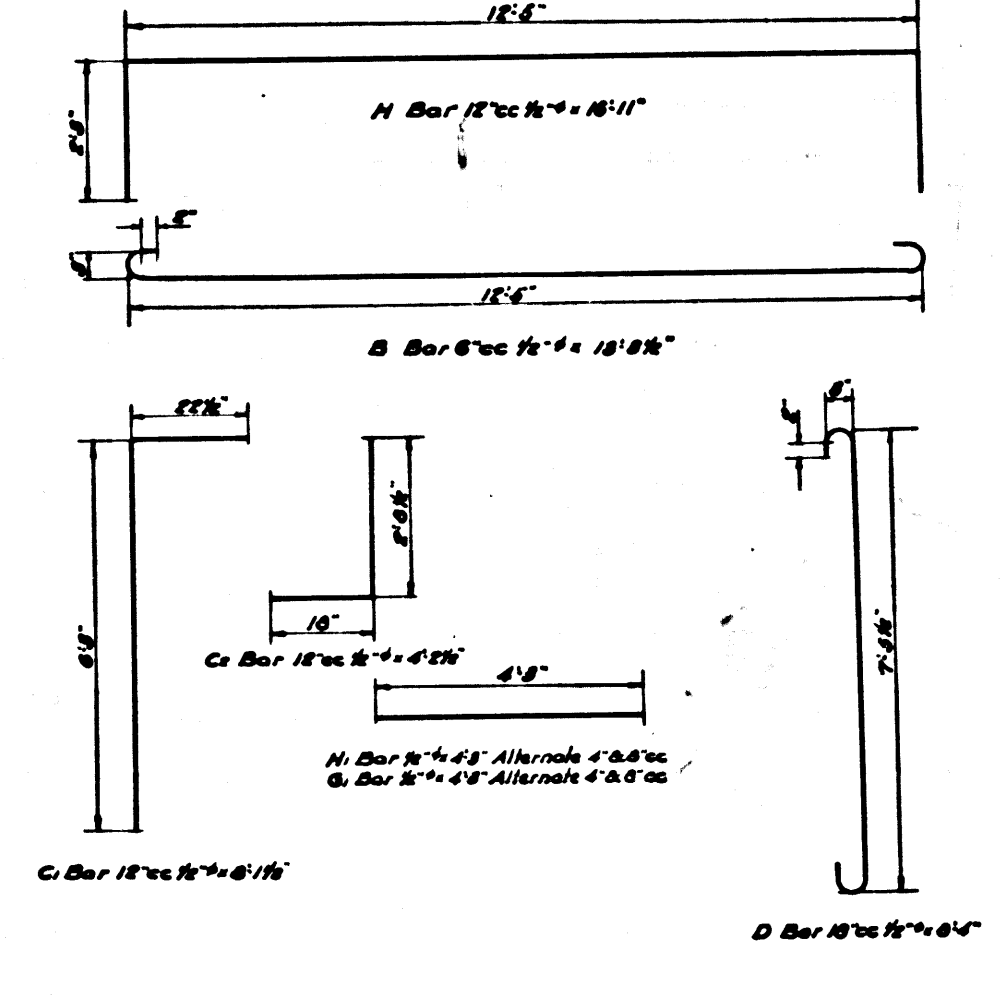
CSB-1165-4-A
 A 2 OF A 4



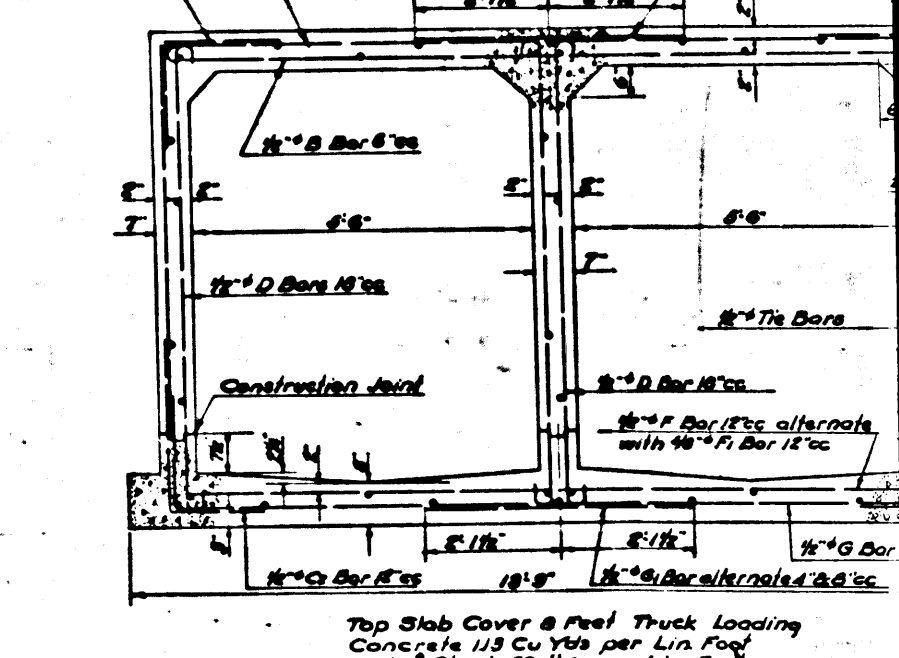
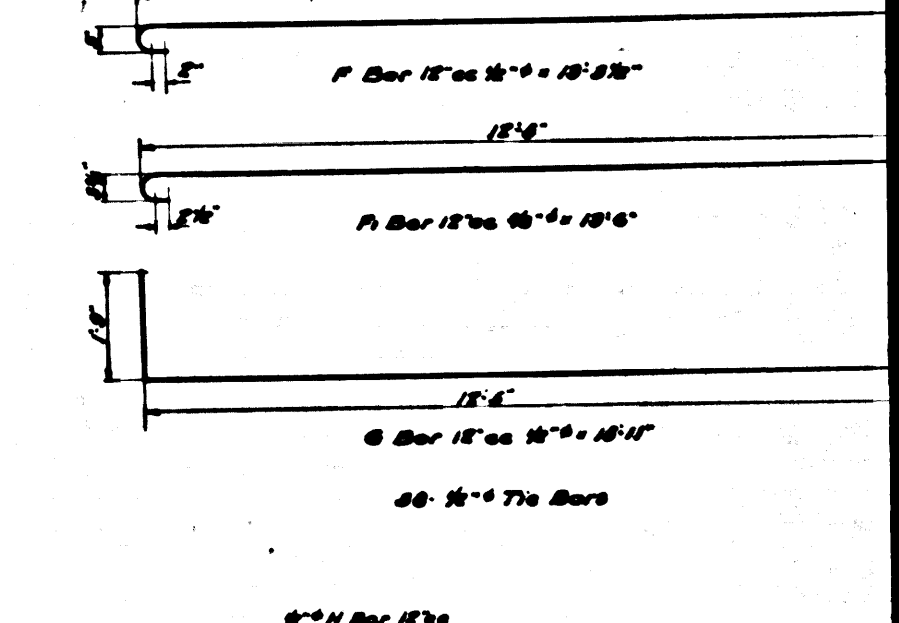
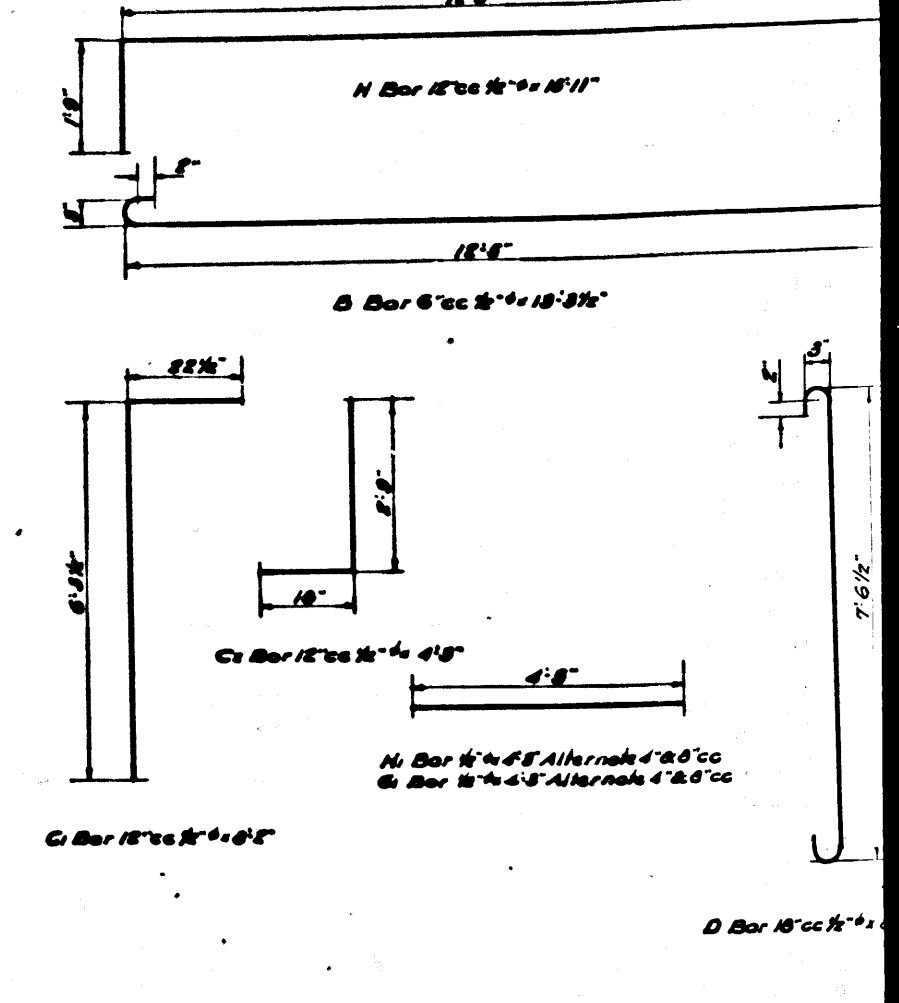
SECTION N
 REINF CONC BOX 2'-5" x 6'-6"
 LOMITA TRUNK
 Scale: 1/2" = 1'-0"



SECTION M
 REINF CONC BOX 2'-5" x 6'-6"
 LOMITA TRUNK
 Scale: 1/2" = 1'-0"



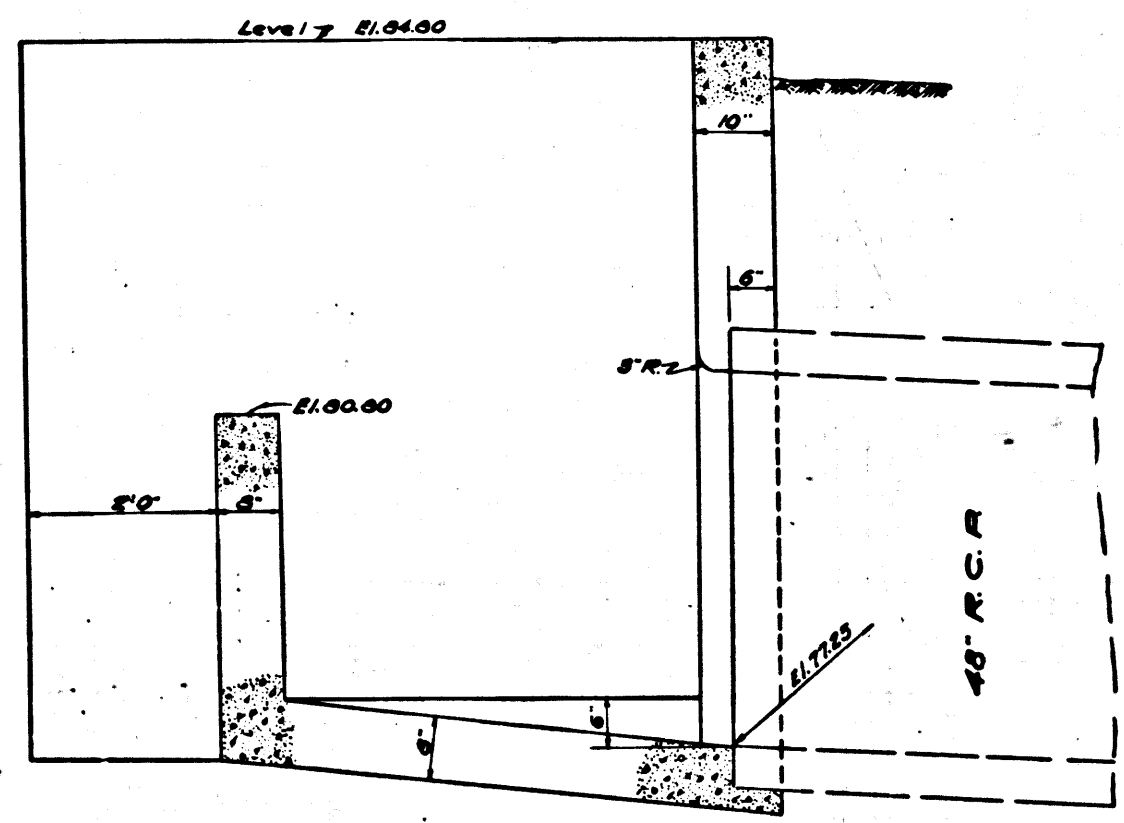
SECTION L
 REINF CONC BOX 2'-5" x 6'-6"
 LOMITA TRUNK
 Scale: 1/2" = 1'-0"



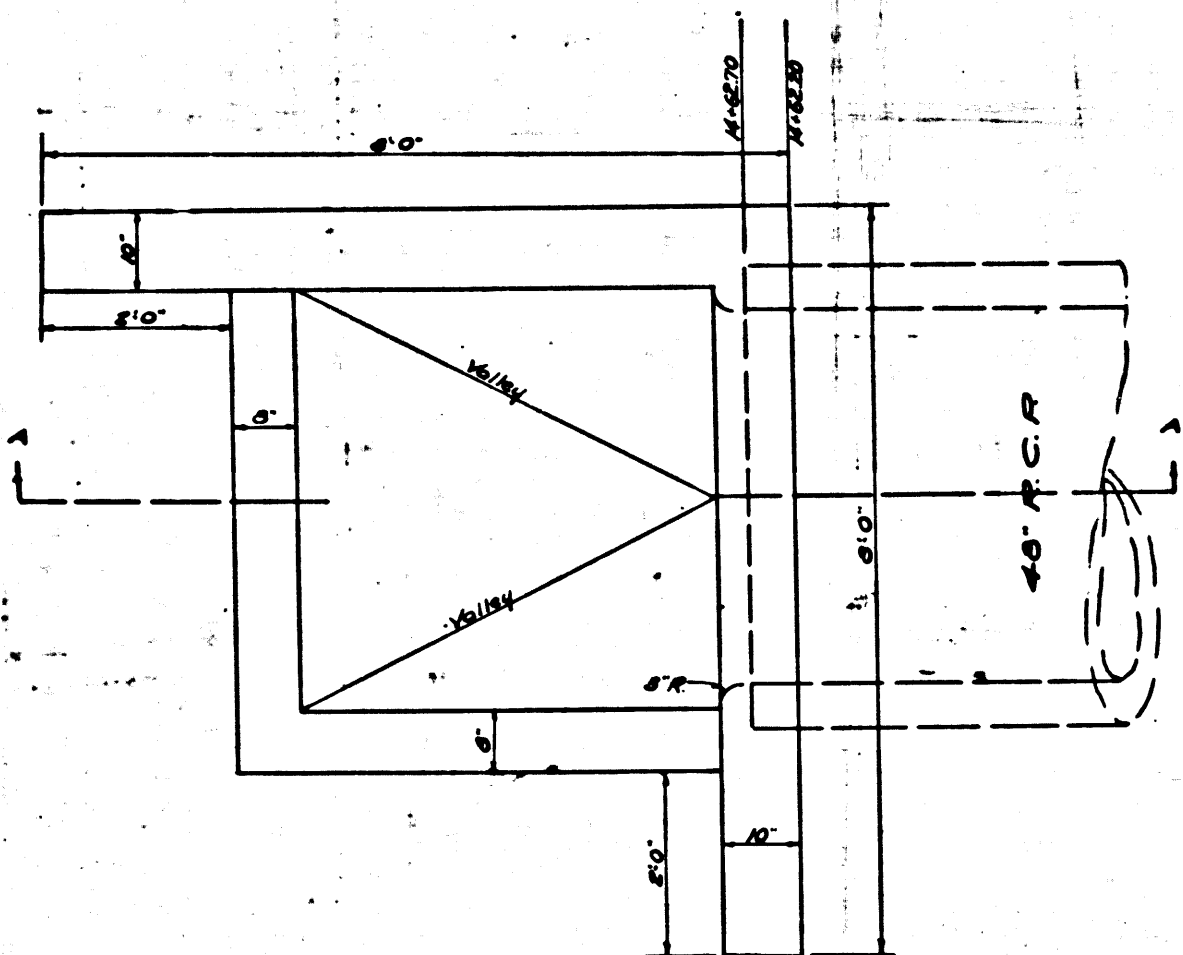
SECTION K
 REINF CONC BOX 2'-5" x 6'-6"
 LOMITA TRUNK
 Scale: 1/2" = 1'-0"

CSB-1165-4A
 A 3 OF A 4

11-1-B ON PAM 220YAVRUS YTIUOUC

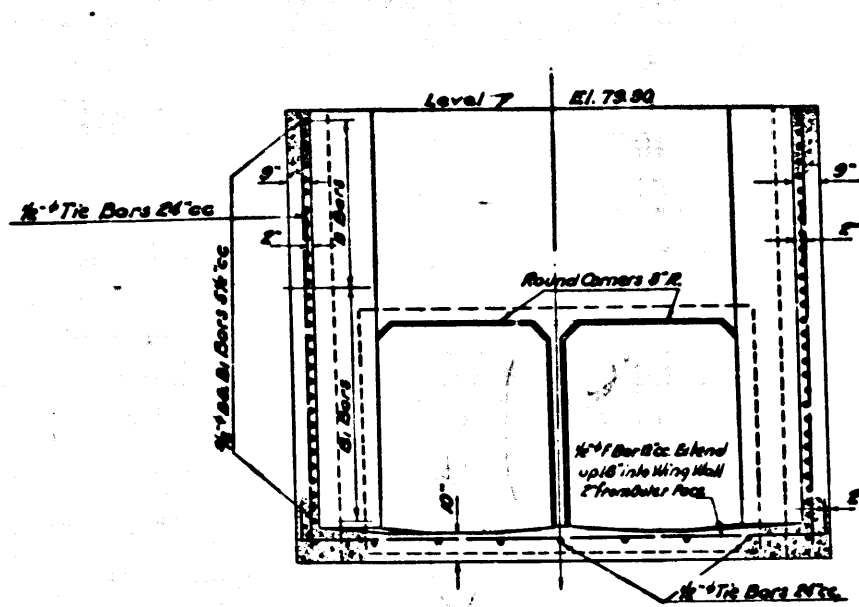


SECTION A-A

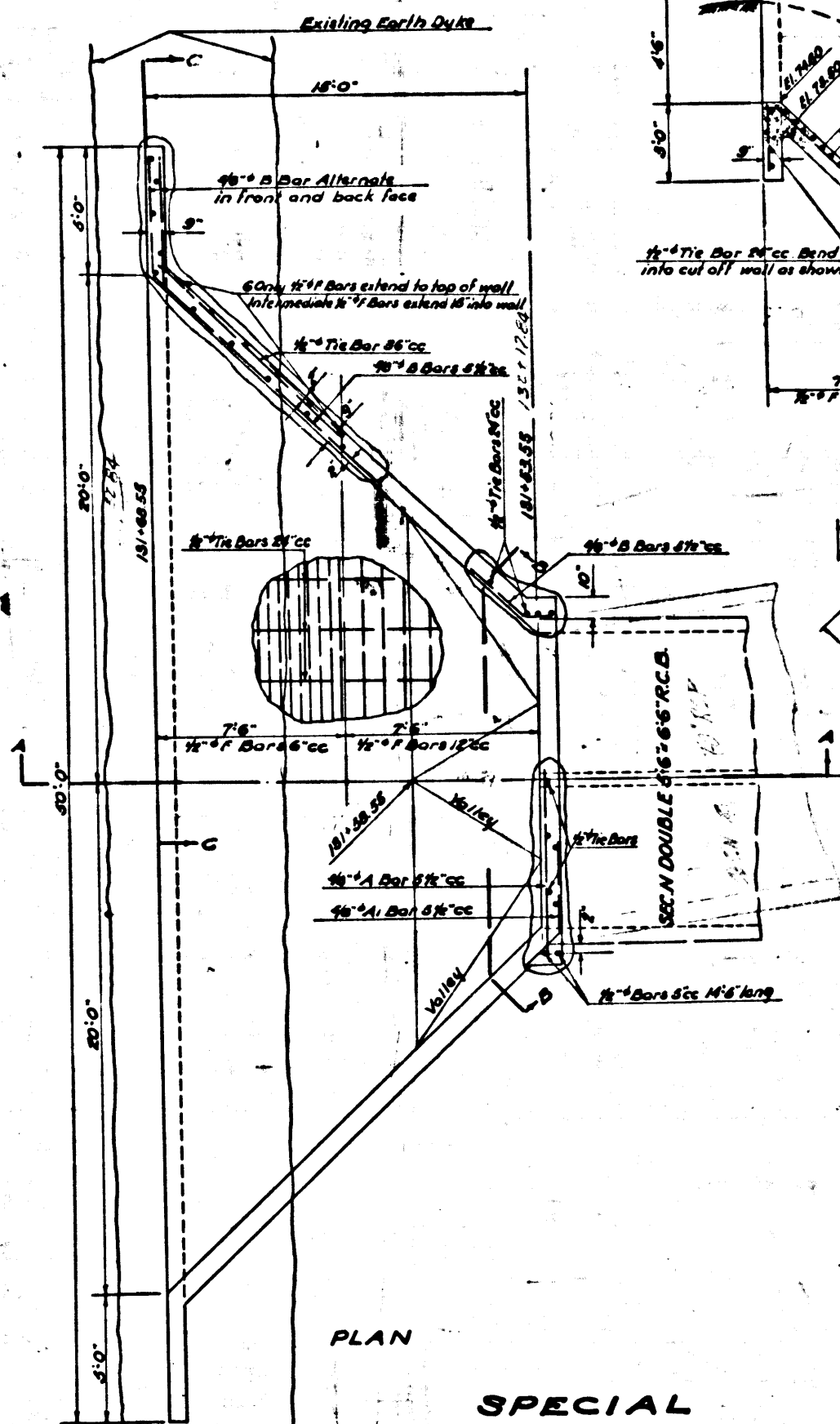


PLAN

SPECIAL STRUCTURE N°7
 250th ST. BRANCH
 Concrete: 5.1 Cu. Yds.
 Scale: 1/4" = 1'-0"

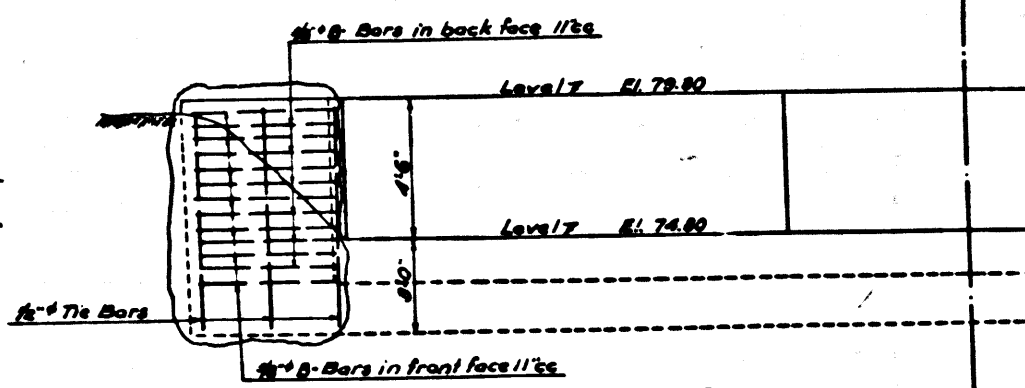


SECTION B-B

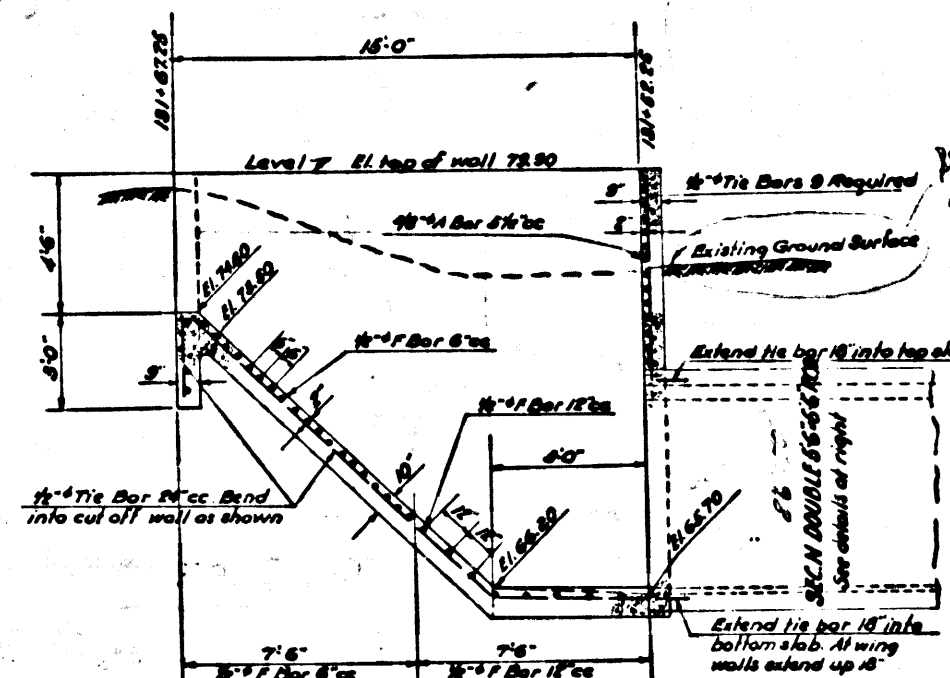


PLAN

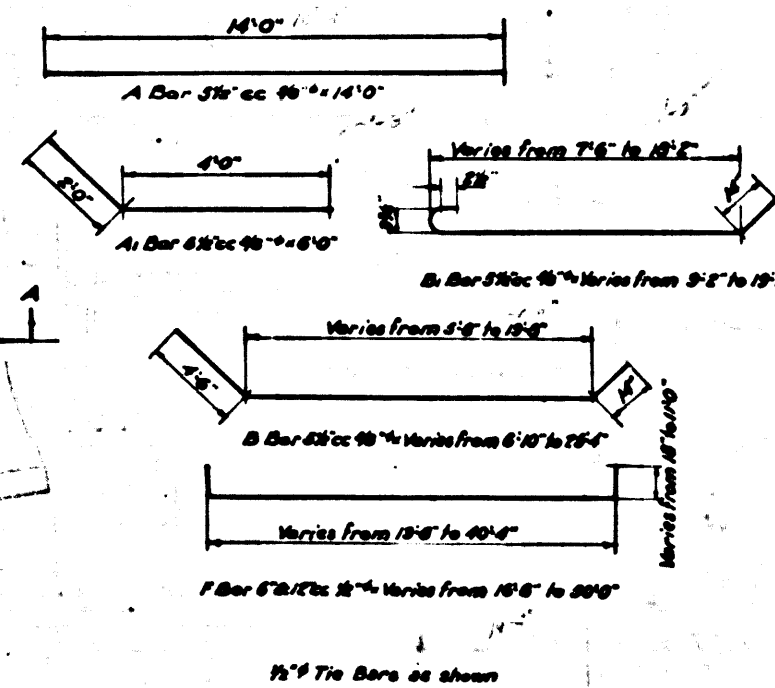
CSB-1165-4A
 A4 OF A4



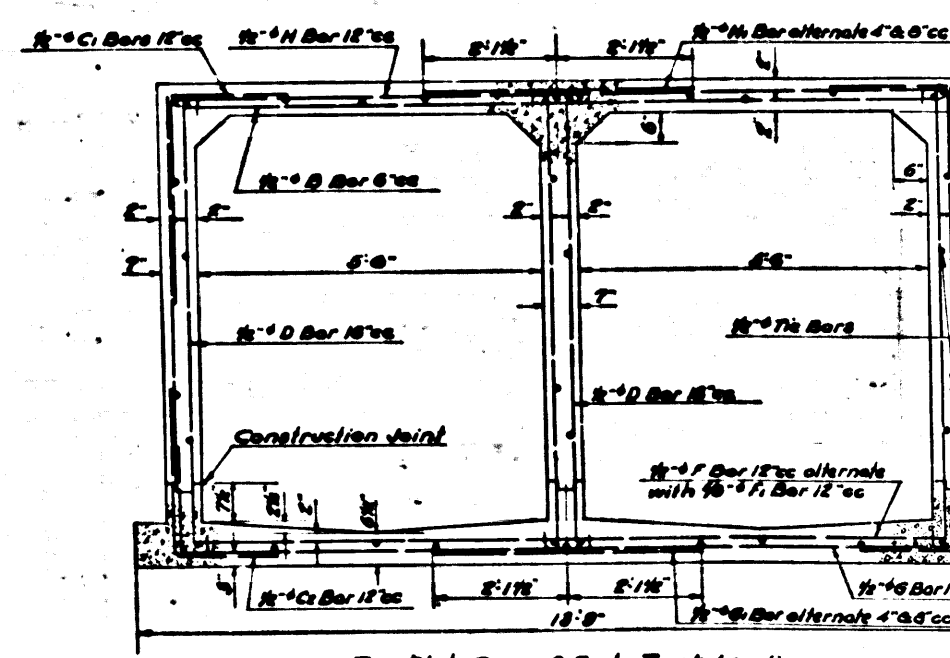
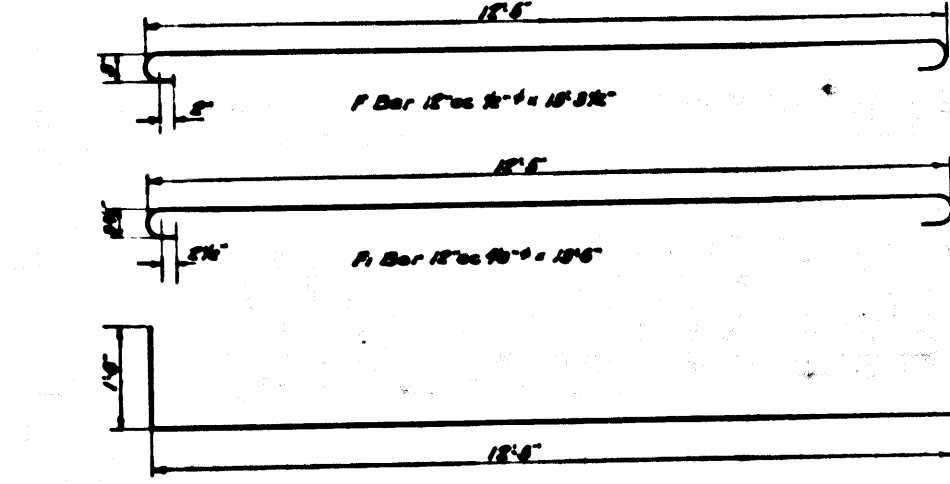
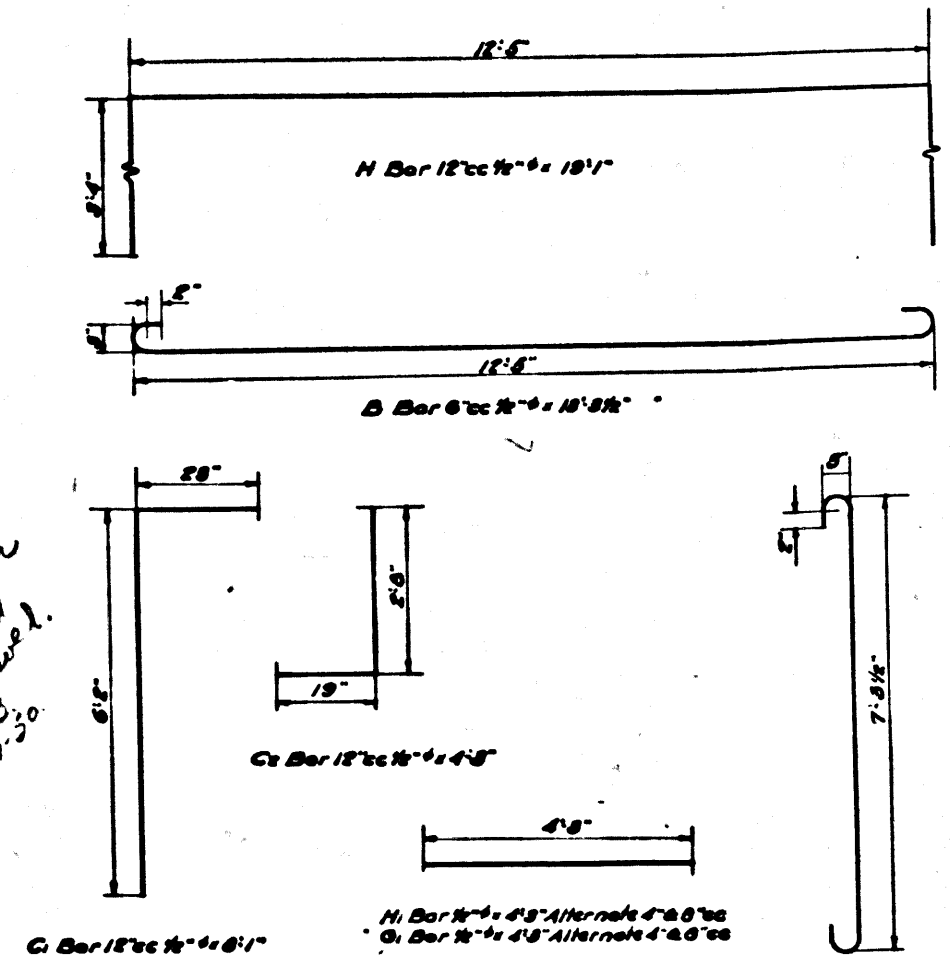
SECTION C-C



SECTION A-A



SPECIAL STRUCTURE N°6
 LOMITA TRUNK
 Concrete: 34 Cu. Yds.
 Reinf. Steel: 2620 lbs
 Scale: 1/4" = 1'-0"



SECTION N

REINF. CONC. BOX 256" x 6'6"
 LOMITA TRUNK
 Scale: 1/4" = 1'-0"

SHEET NO. 4 OF 8 SHEETS
 CONSULT SURVEYORS MAP NO. B-1182