

**SECTION I**  
REINF. CONC. BOX 2.65x6.5'  
LOMITA TRUNK  
Scale: 3/16"

**SECTION H**  
REINF. CONC. BOX 2.65x6.5'  
LOMITA TRUNK  
Scale: 3/16"

CSB-1165-6  
A1 OF A7

**NOTE:**  
Elevations are in feet above U.S.G.S. or mean Sea Level Datum.  
All Reinforced Concrete shall be Class A Concrete unless otherwise specified.  
Dimensions for depth of Reinforcing Steel are from face of concrete to center of bars.  
Reinforcing Bars shall be round deformed bars of intermediate grade steel, unless otherwise specified, and at all splices shall be lapped 36 bar diameters.  
Warp rods 3/4 inch in diameter, spaced not more than 5 feet each way shall be placed in each sidewall unless otherwise specified.  
For arrangement of Drain Tile under Structures see Standard D-45.

**LOMITA BOULEVARD  
DRAINAGE SYSTEM**  
OF THE COUNTY OF LOS ANGELES, CALIFORNIA.

DETAILS OF  
BOX SECTIONS AND SPECIAL STRUCTURES

SHEET 6 OF 8 SHEETS  
SCALE AS SHOWN  
MAY 1941  
ALFRED JONES - COUNTY ENGINEER

THE DRAWING AND THE DATA HEREON ARE HEREBY MADE A PART OF THE SPECIFICATIONS

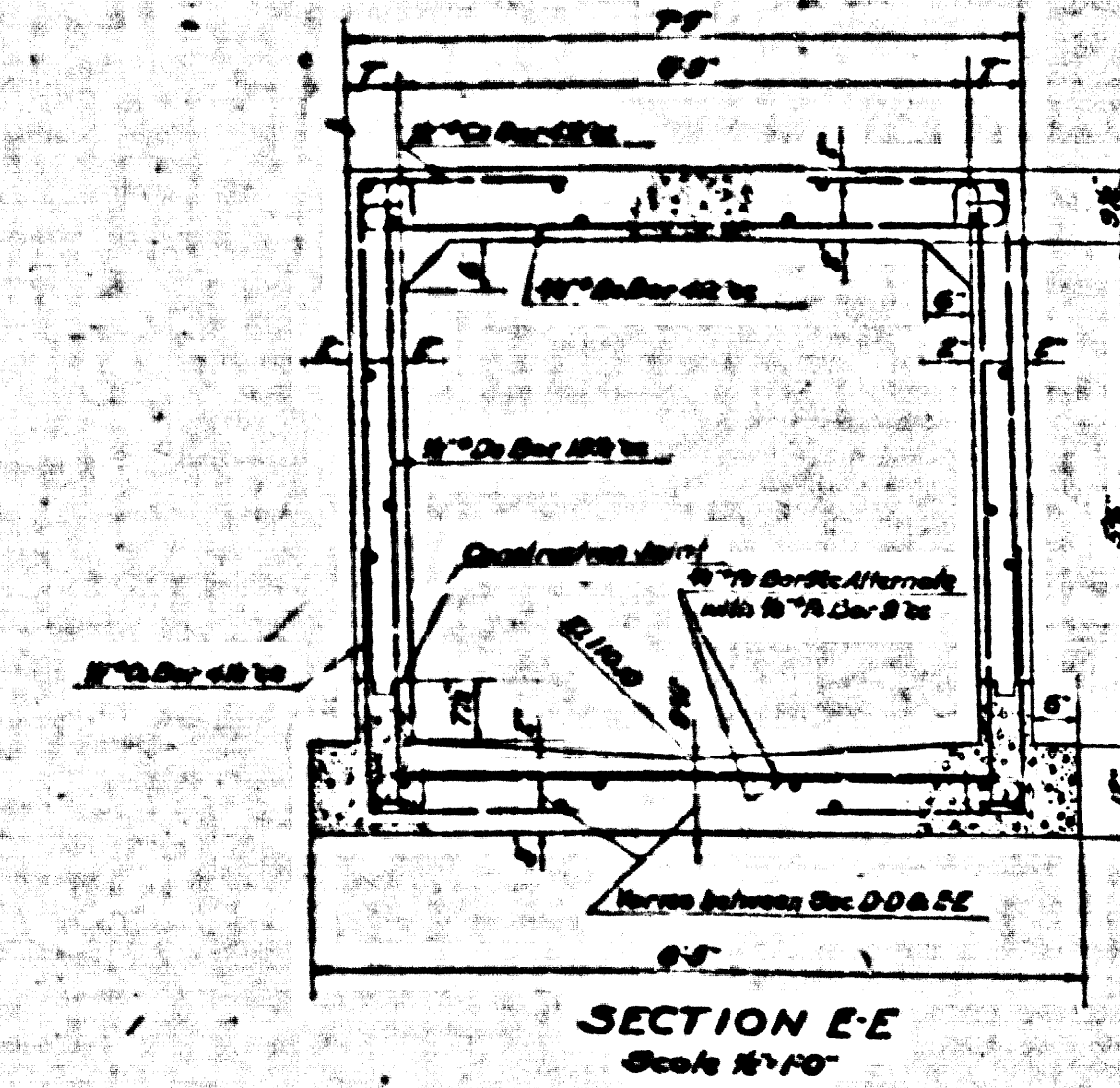
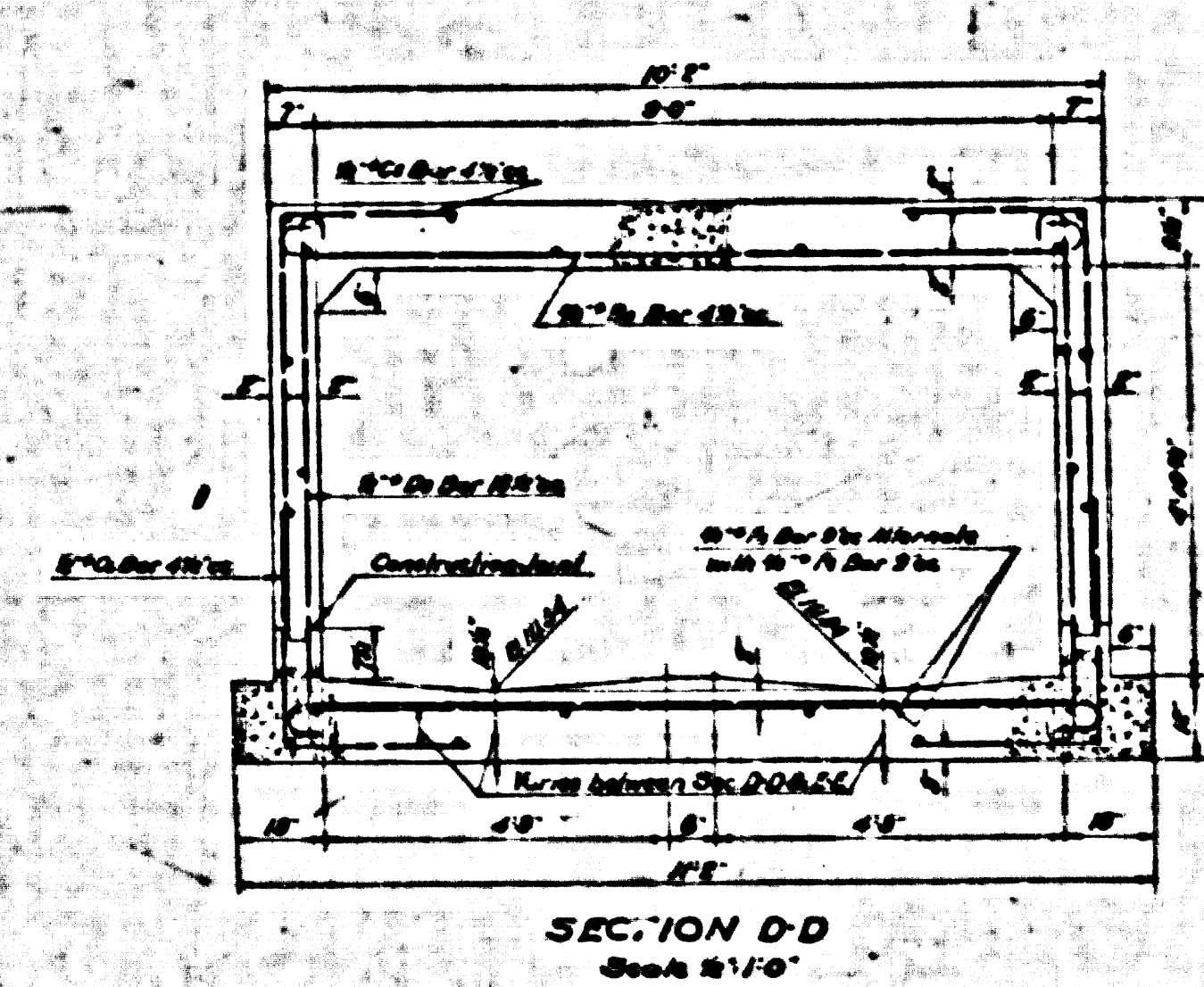
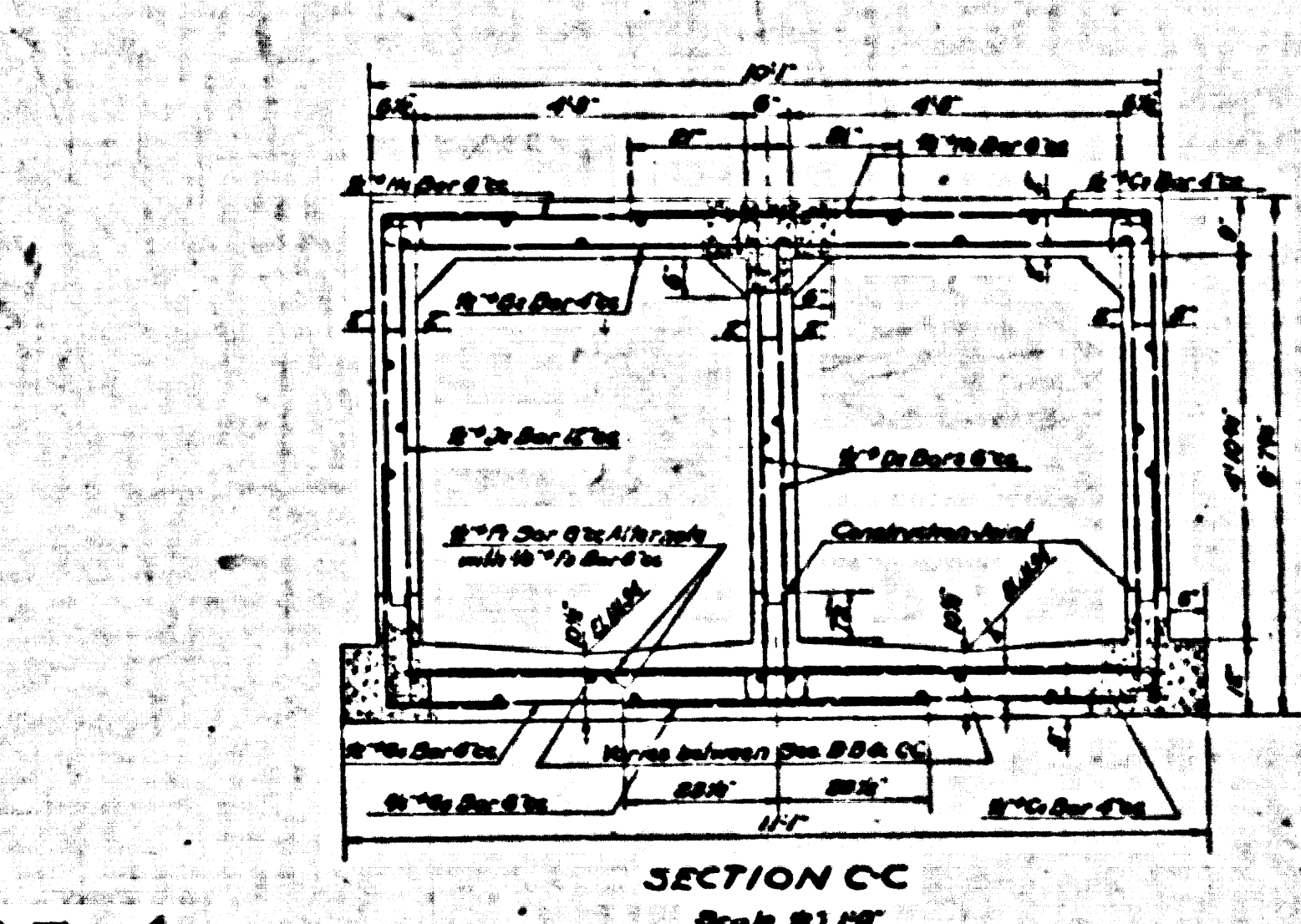
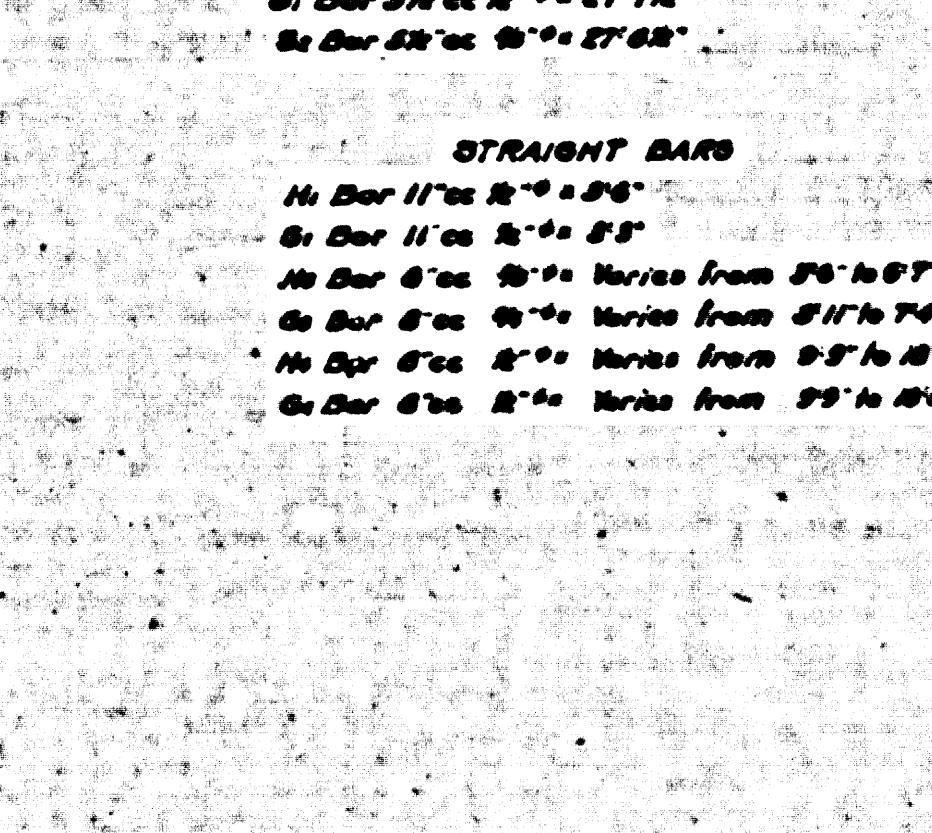
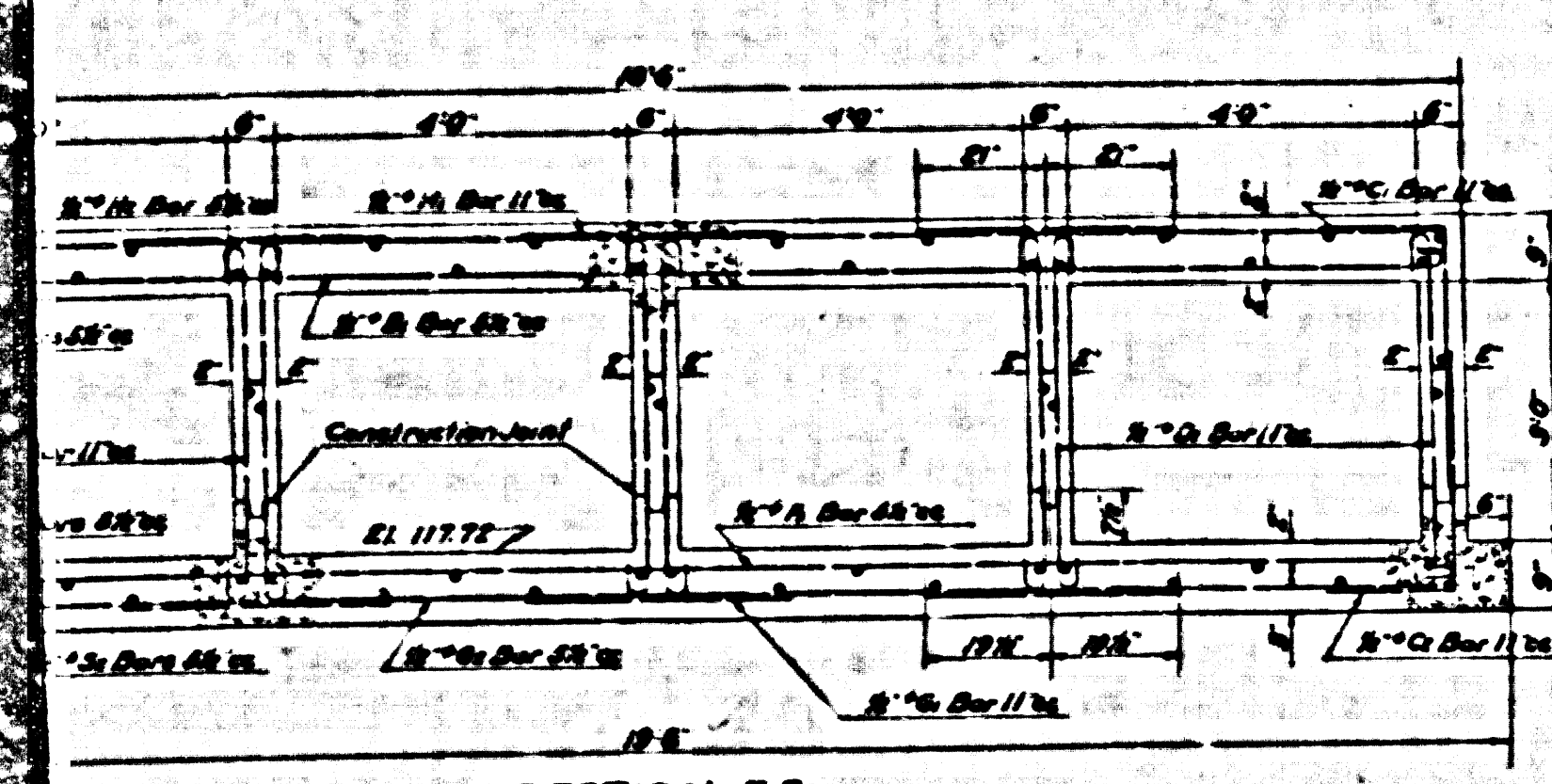
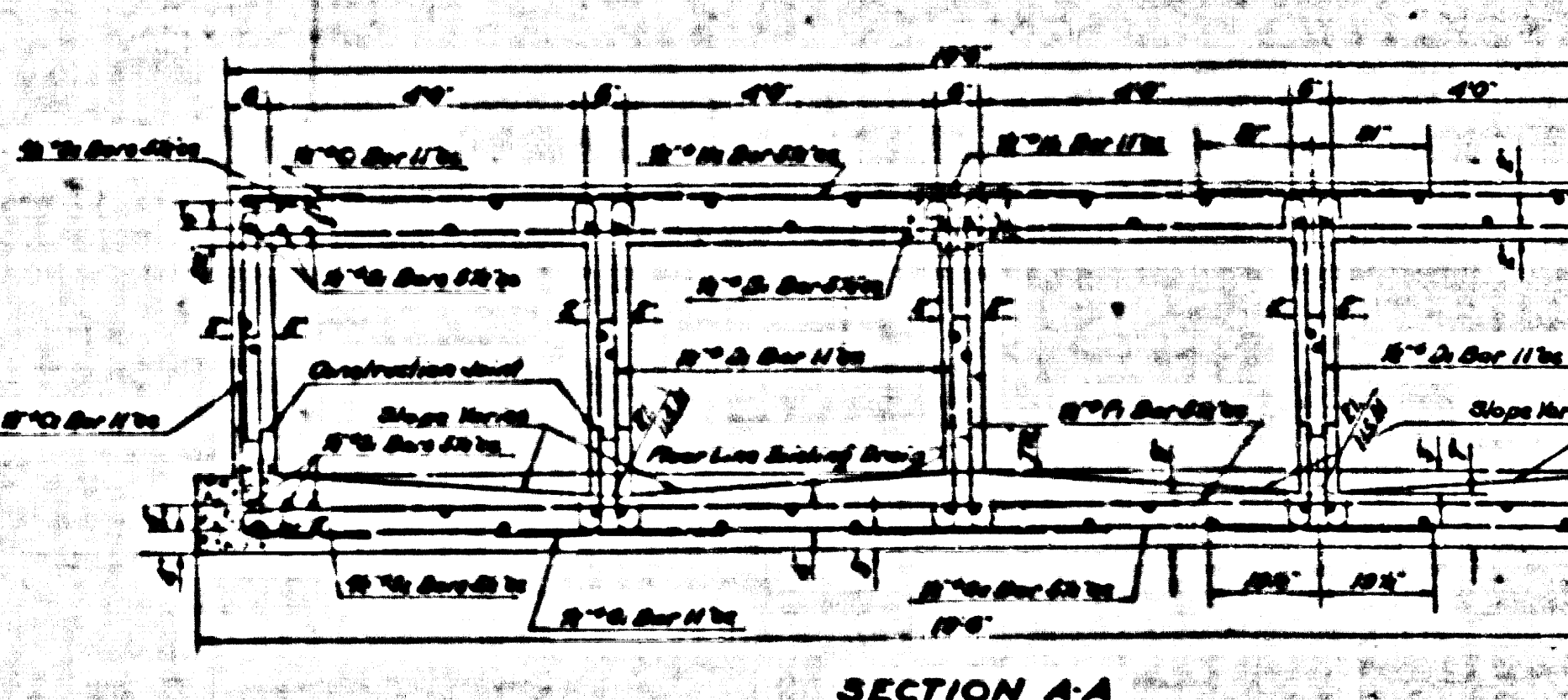
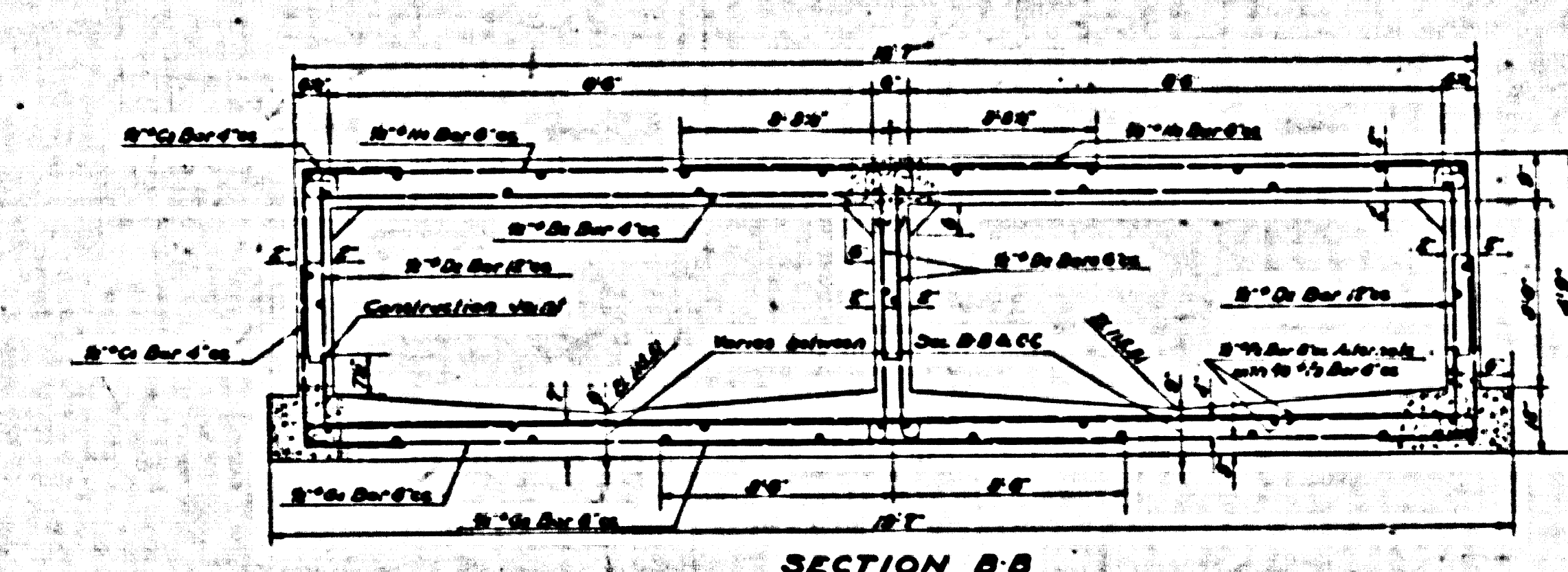
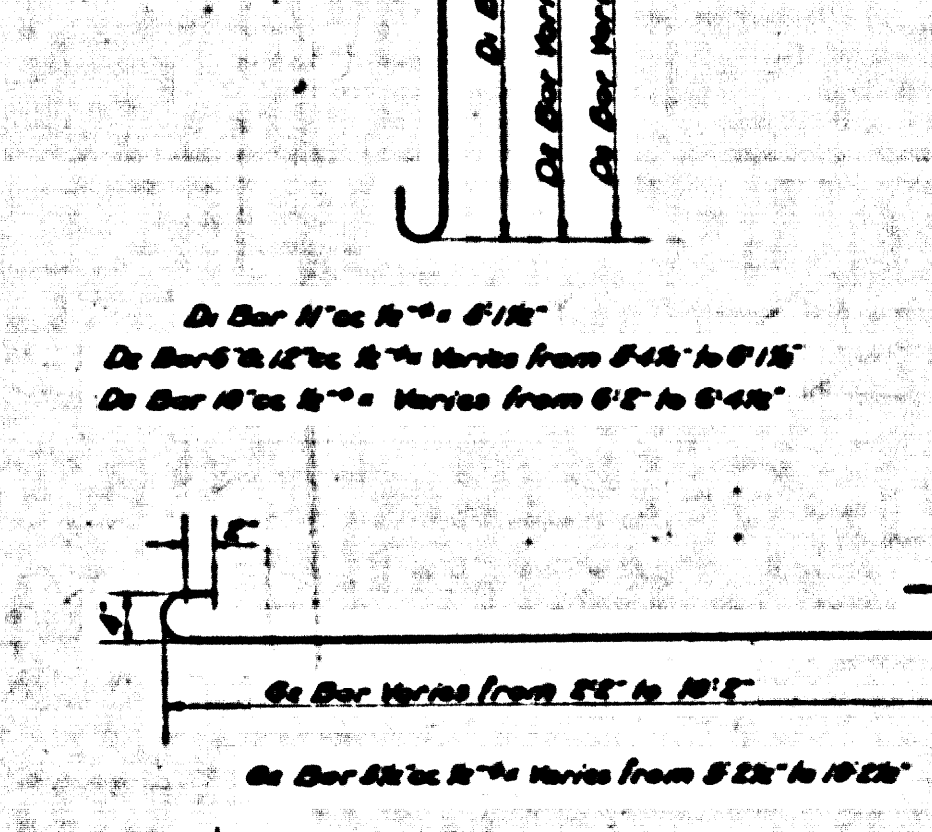
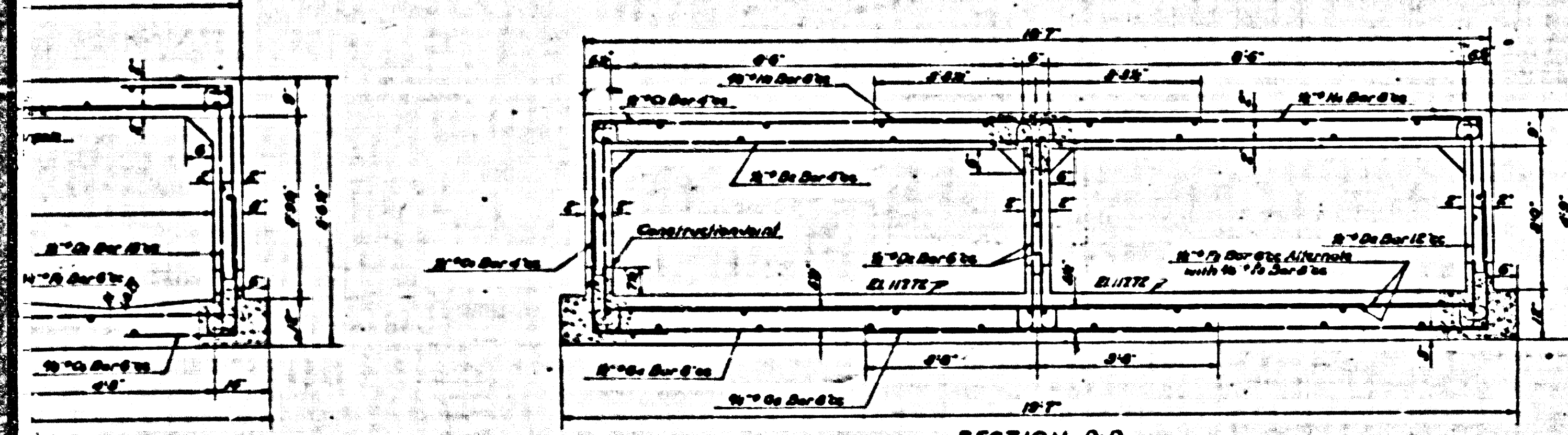
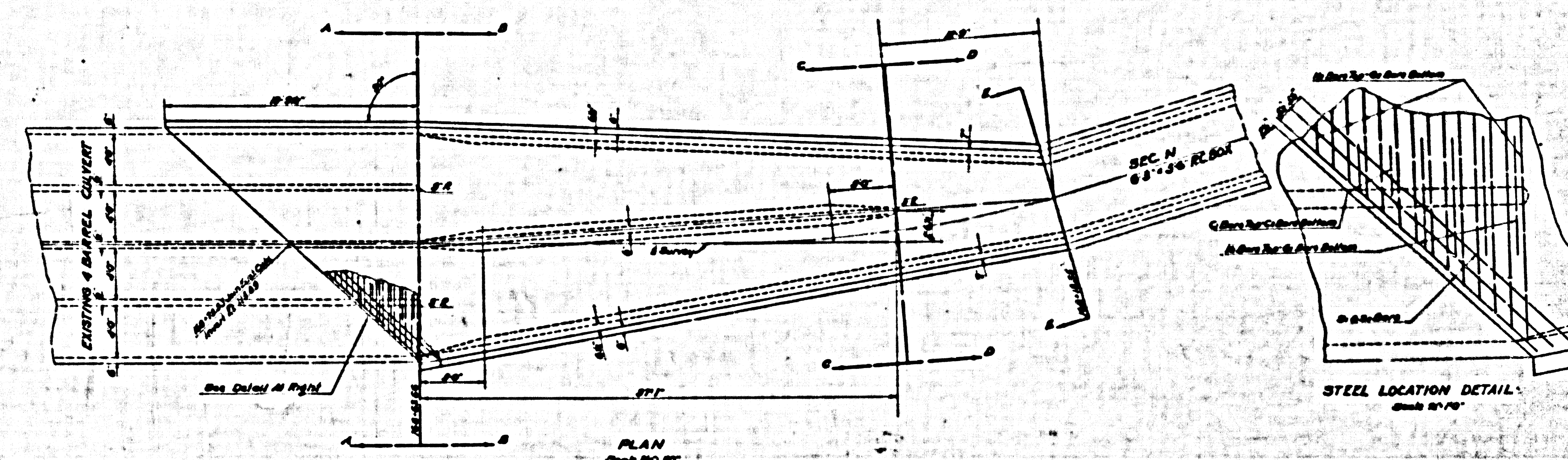
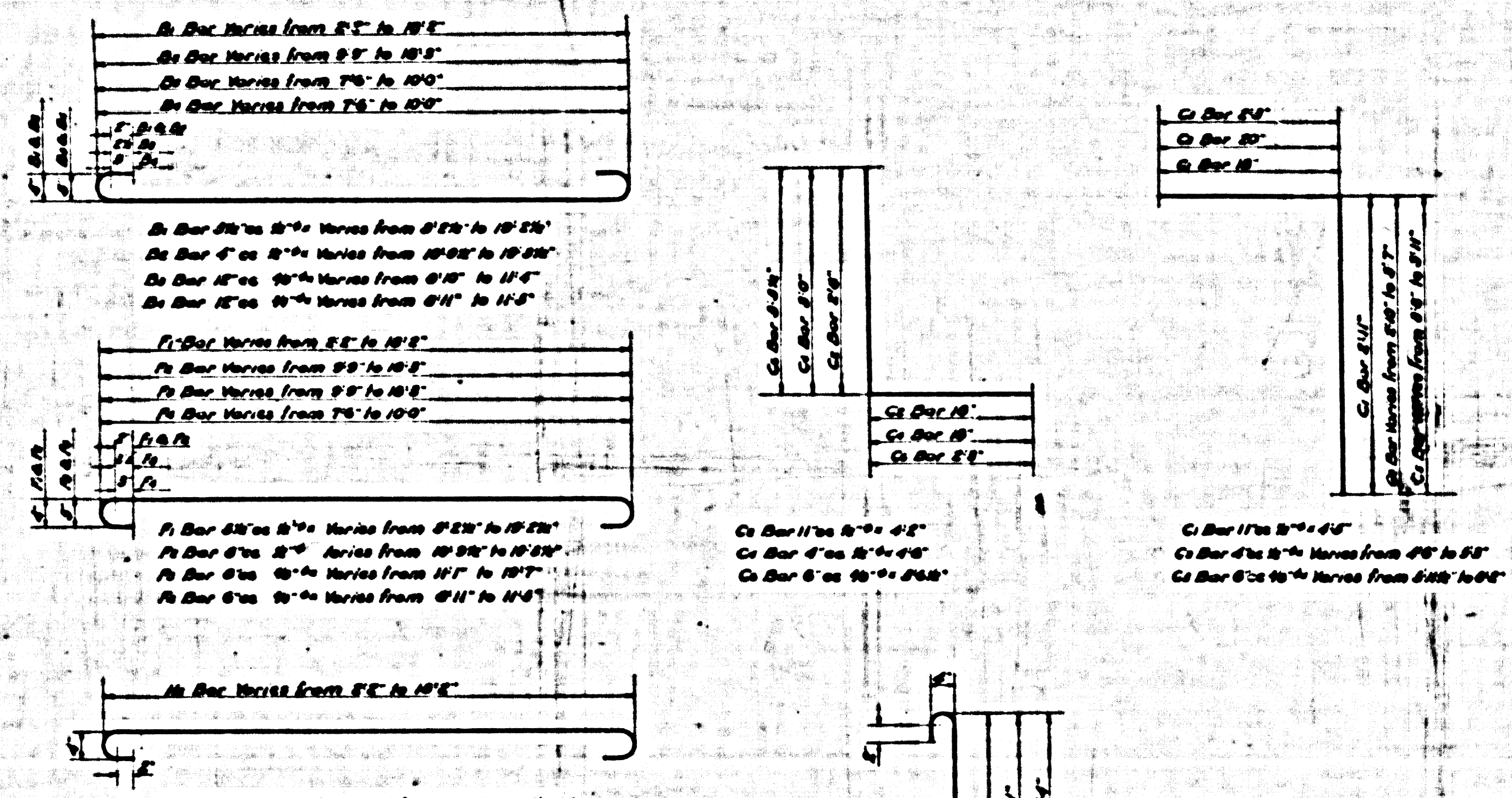
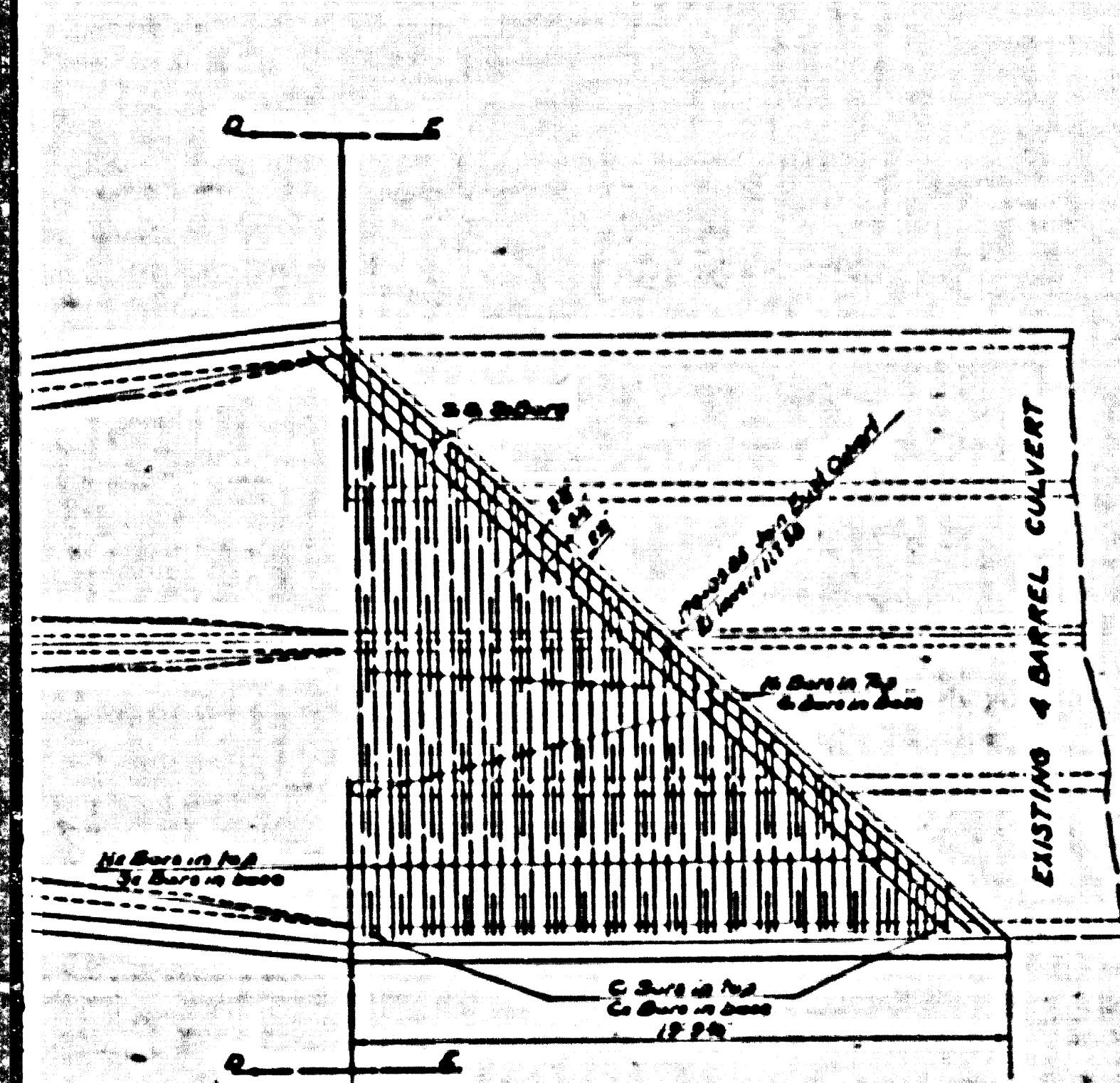
REFERENCE	DESIGNED	Y.A. KAUFMAN	SEPT. 1940
	TRACED	W.F. BRUSHER	FEB. 1941
	CHECKED	L.B. KNOX	OCT. 1940

6

2111-6-01 ON 9 AM PROVISIONAL TYPING  
 SHEET 6 OF 8 ON 9 AM TYPING

2111-6-01 ON 9 AM TYPING  
 SHEET 6 OF 8 ON 9 AM TYPING

SHEET NO. 6 OF 8 SHEETS  
 CONSULT SURVEYORS AND NO. 8143



NOTE  
All dimensions in feet  
All slabs from transition 2' long  
Exposed ends of walls on 5' radius  
All 1/2" bars 2' above in section

STRAIGHT BARS  
No. Bar 11" x 8" x 26"  
No. Bar 11" x 8" x 26"  
No. Bar 8" x 8" x 26" (Vertical from 10' to 10' 6")  
No. Bar 8" x 8" x 26" (Vertical from 10' 6" to 10' 12")  
No. Bar 8" x 8" x 26" (Vertical from 10' 12" to 11' 0")  
No. Bar 8" x 8" x 26" (Vertical from 11' 0" to 11' 6")

STRUCTURE  
LOMITA BLVD TRUNK STA. 170+03.75

Nº 7

CSB-1165-6  
A40FA7

SPECIAL

STRUCTURE  
LOMITA BLVD TRUNK STA. 160+18.55

J  
J

170'-14.48'

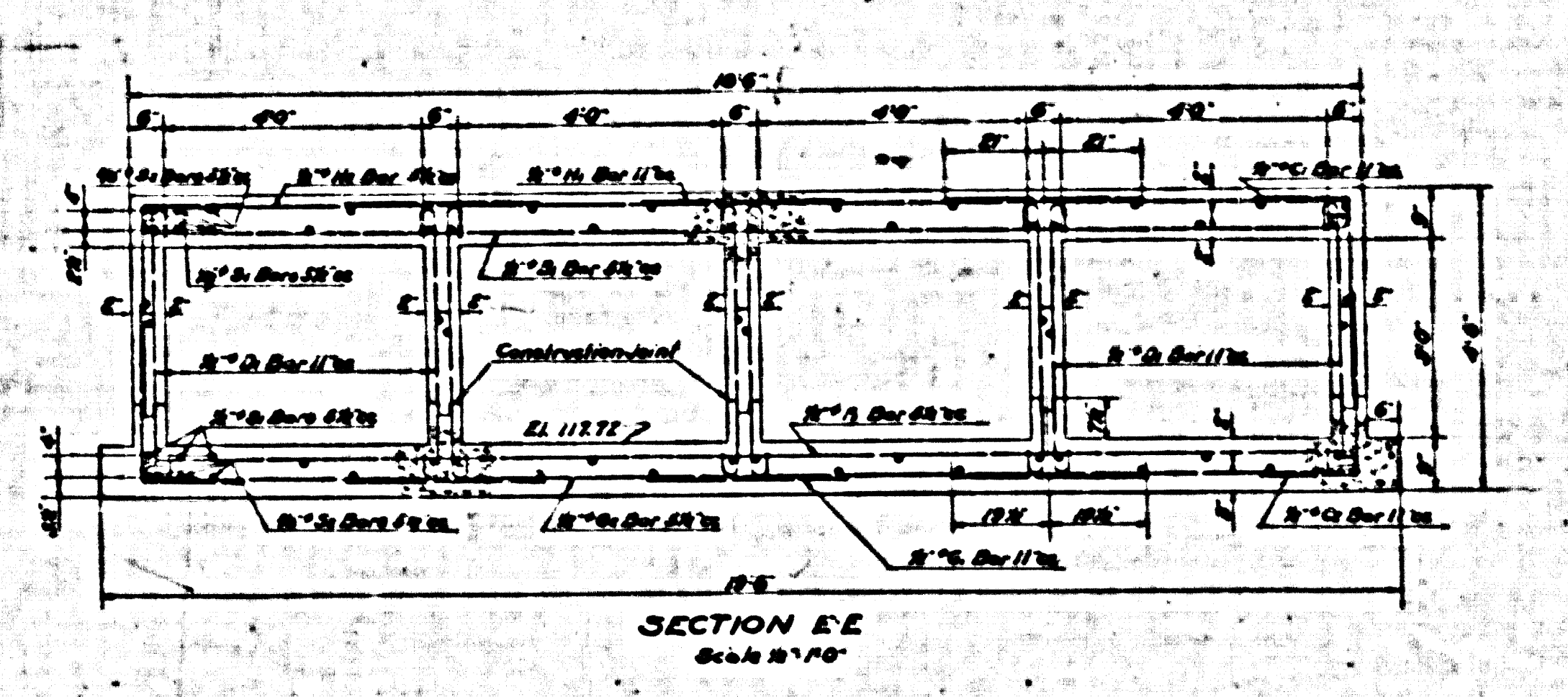
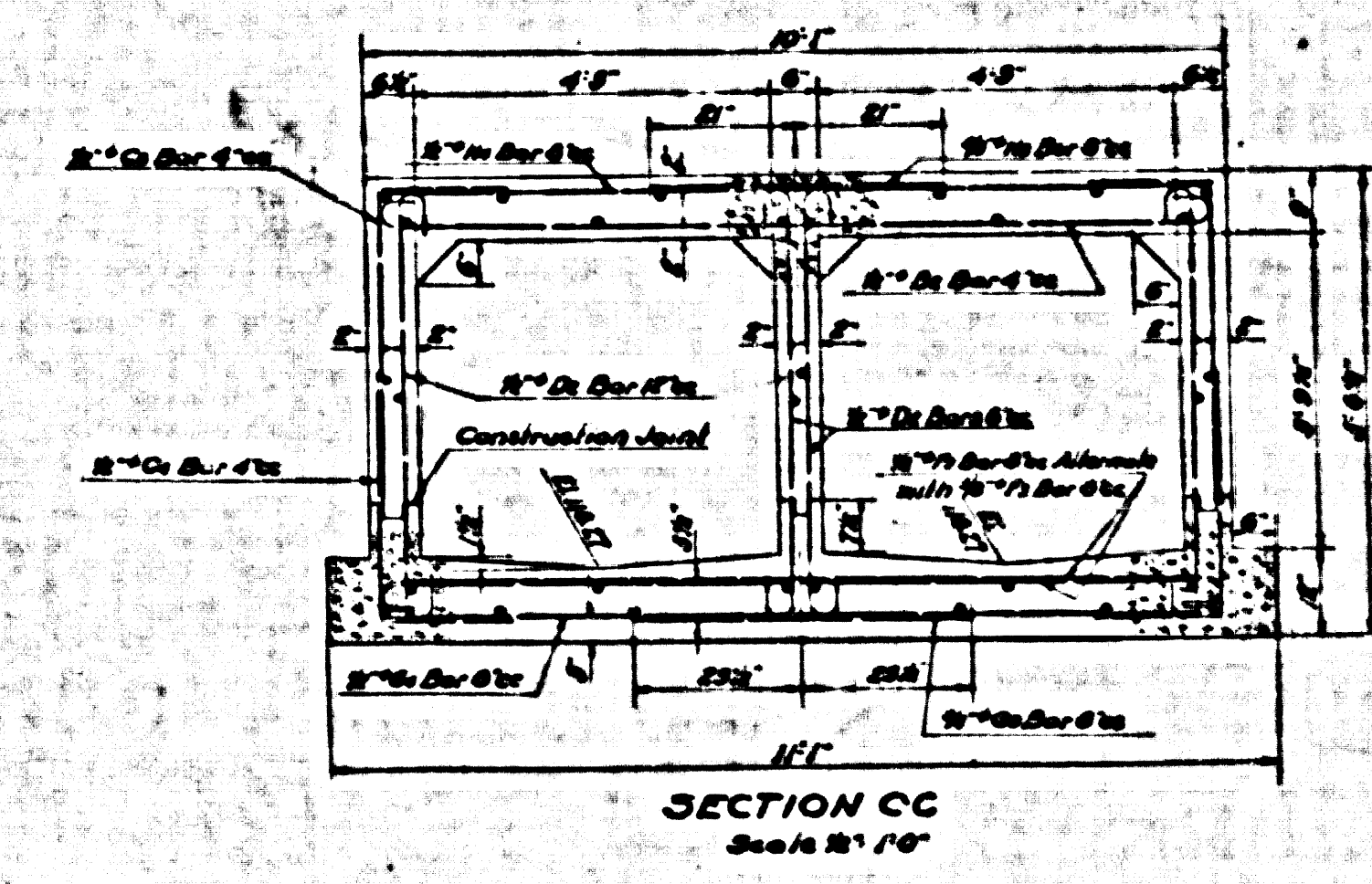
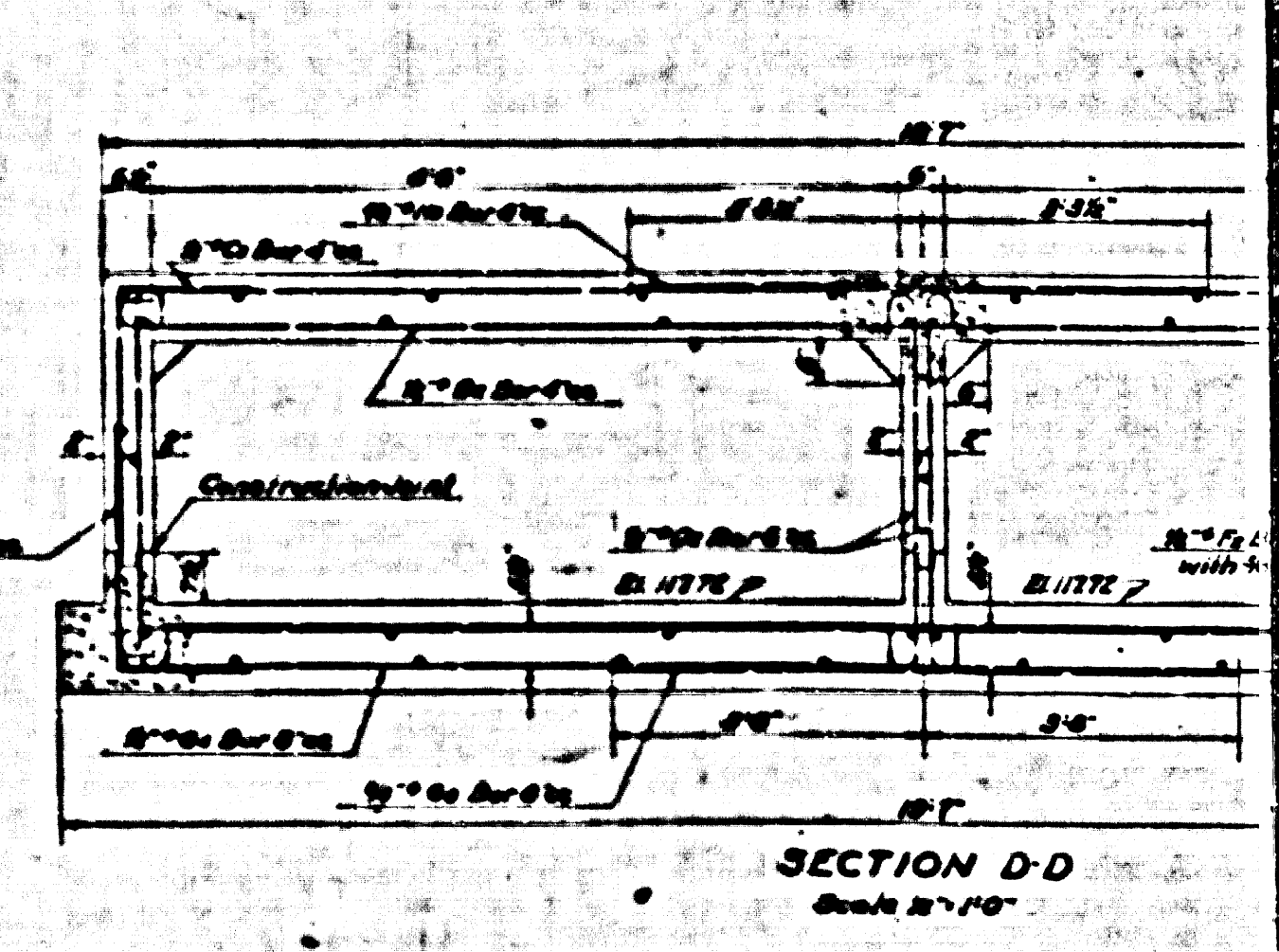
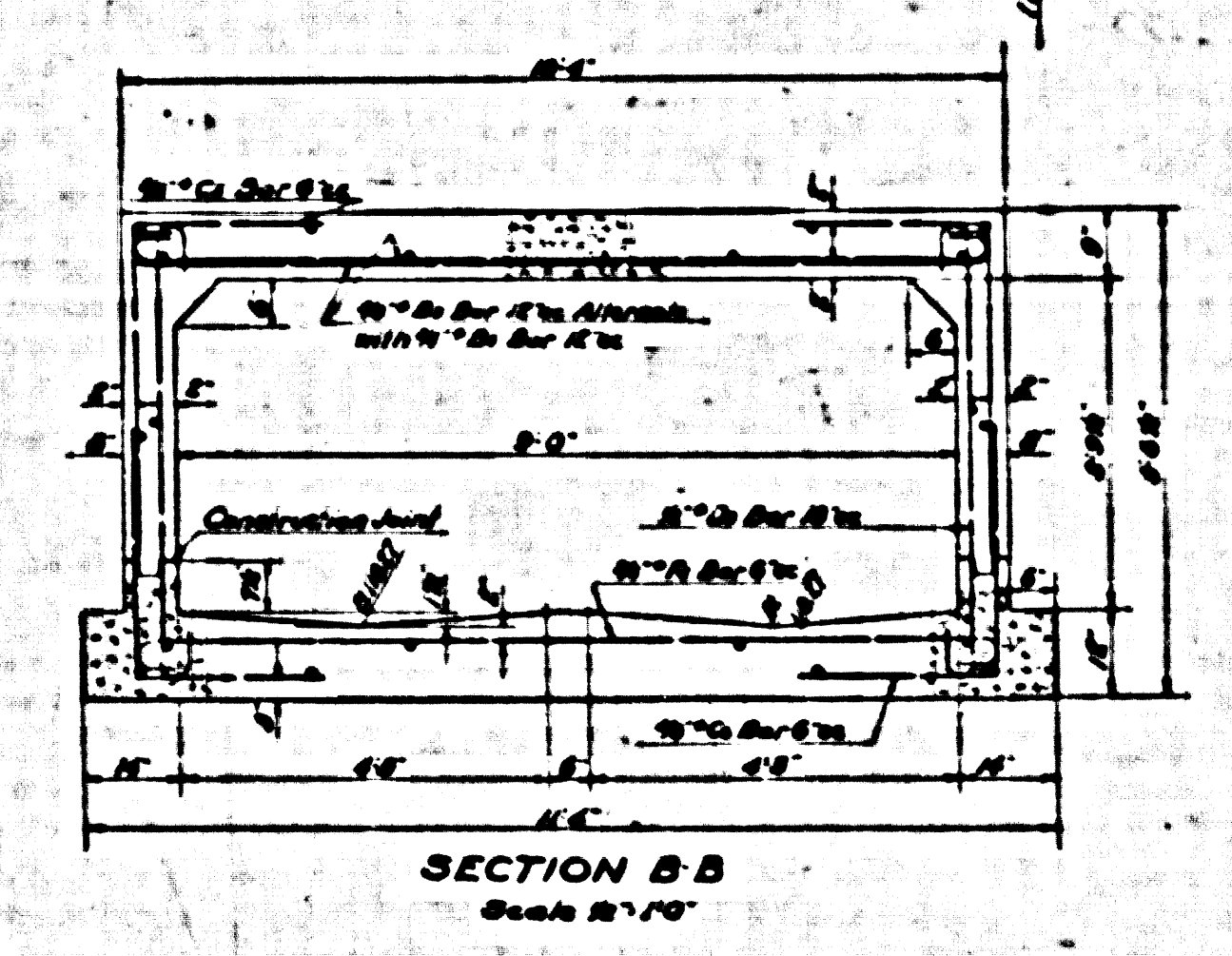
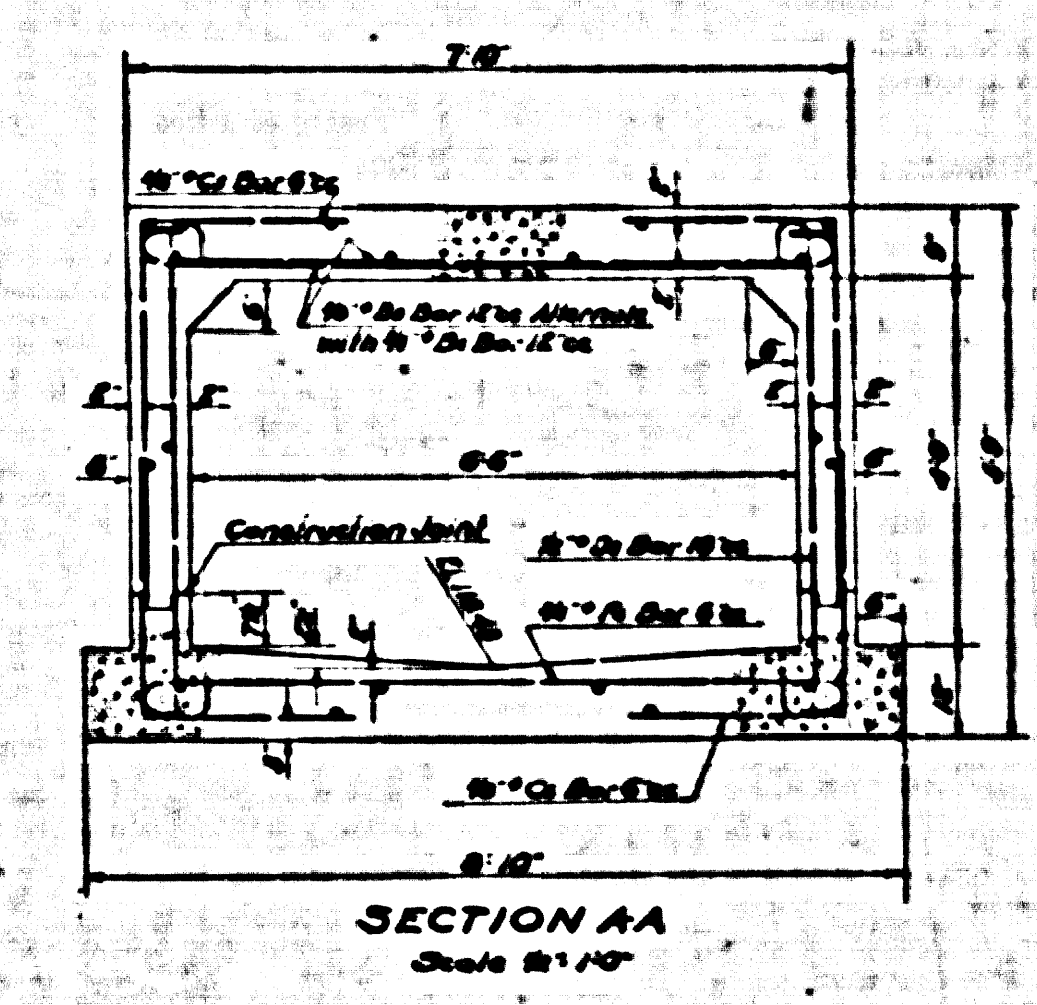
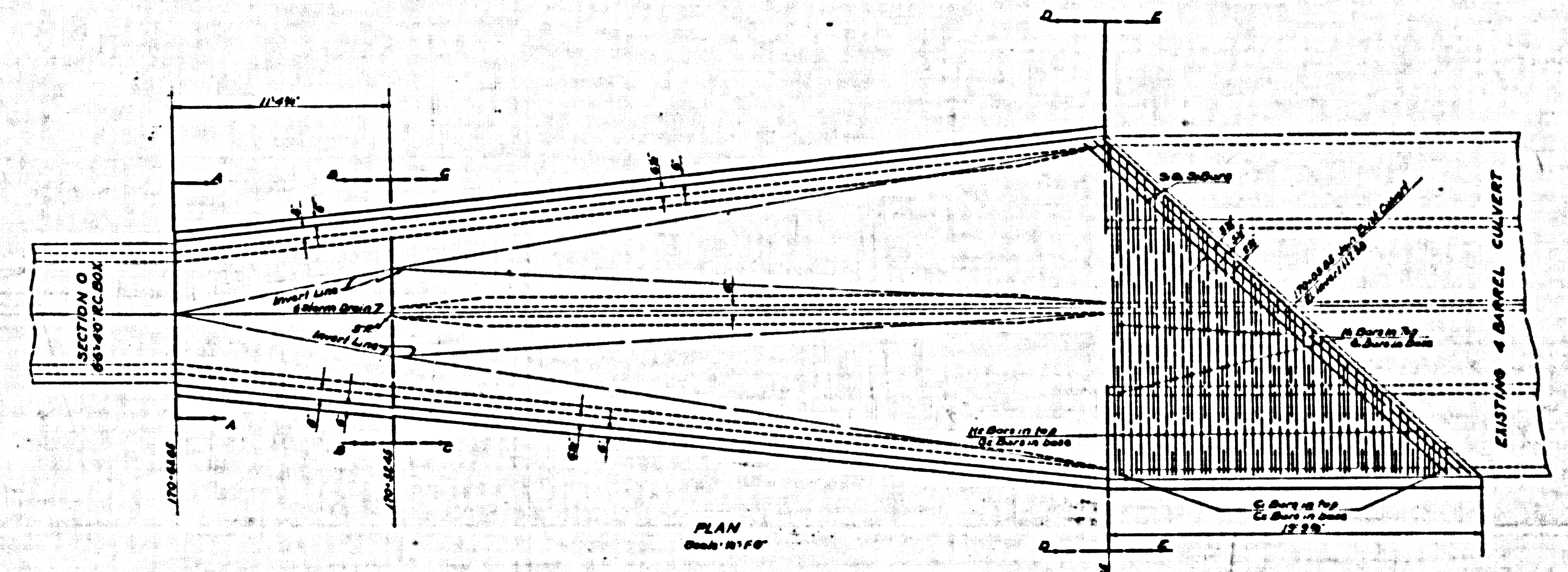
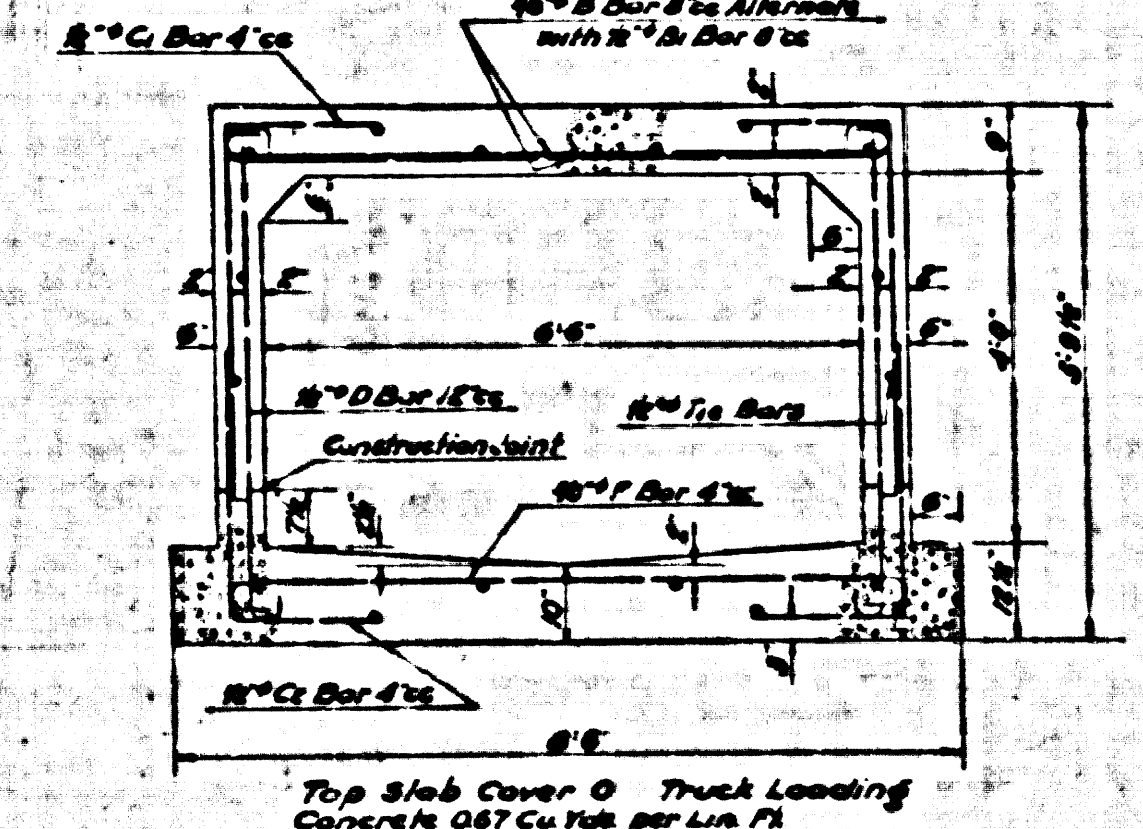
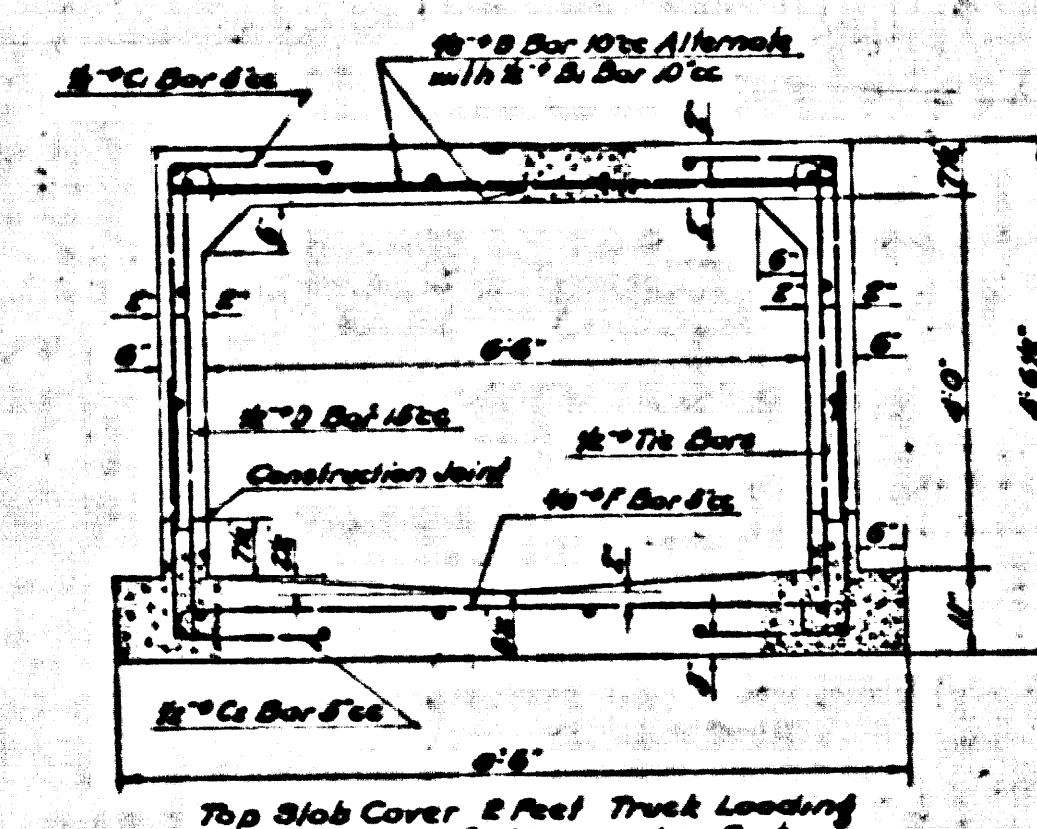
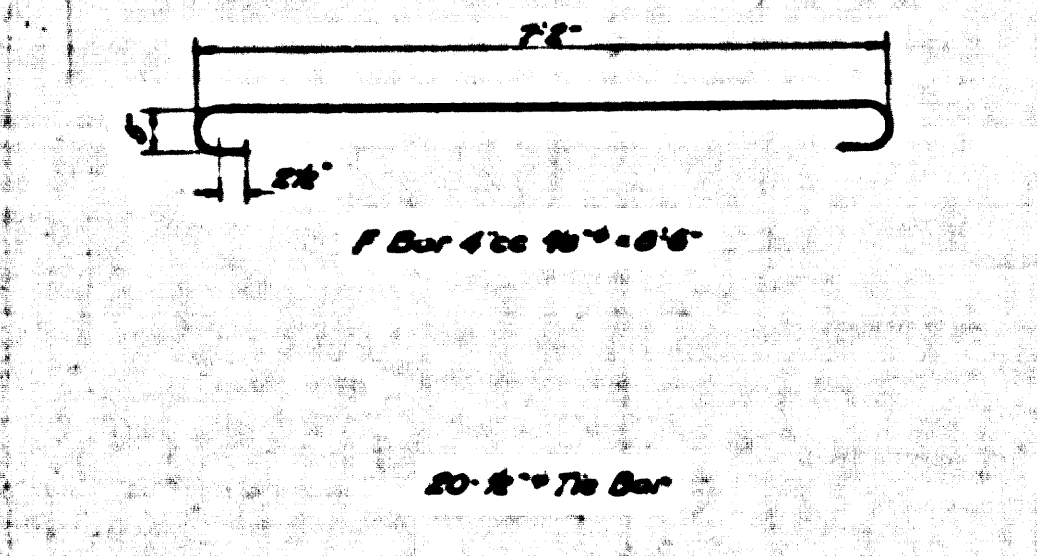
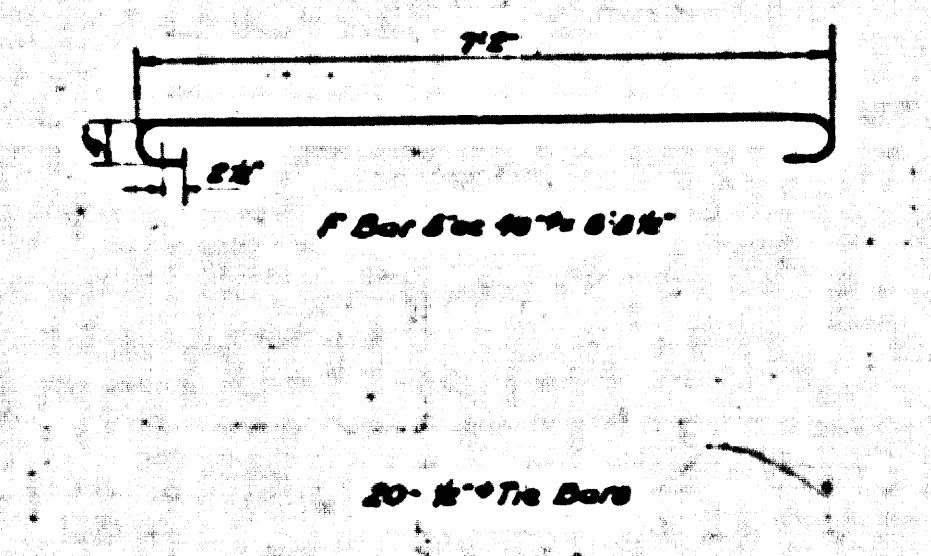
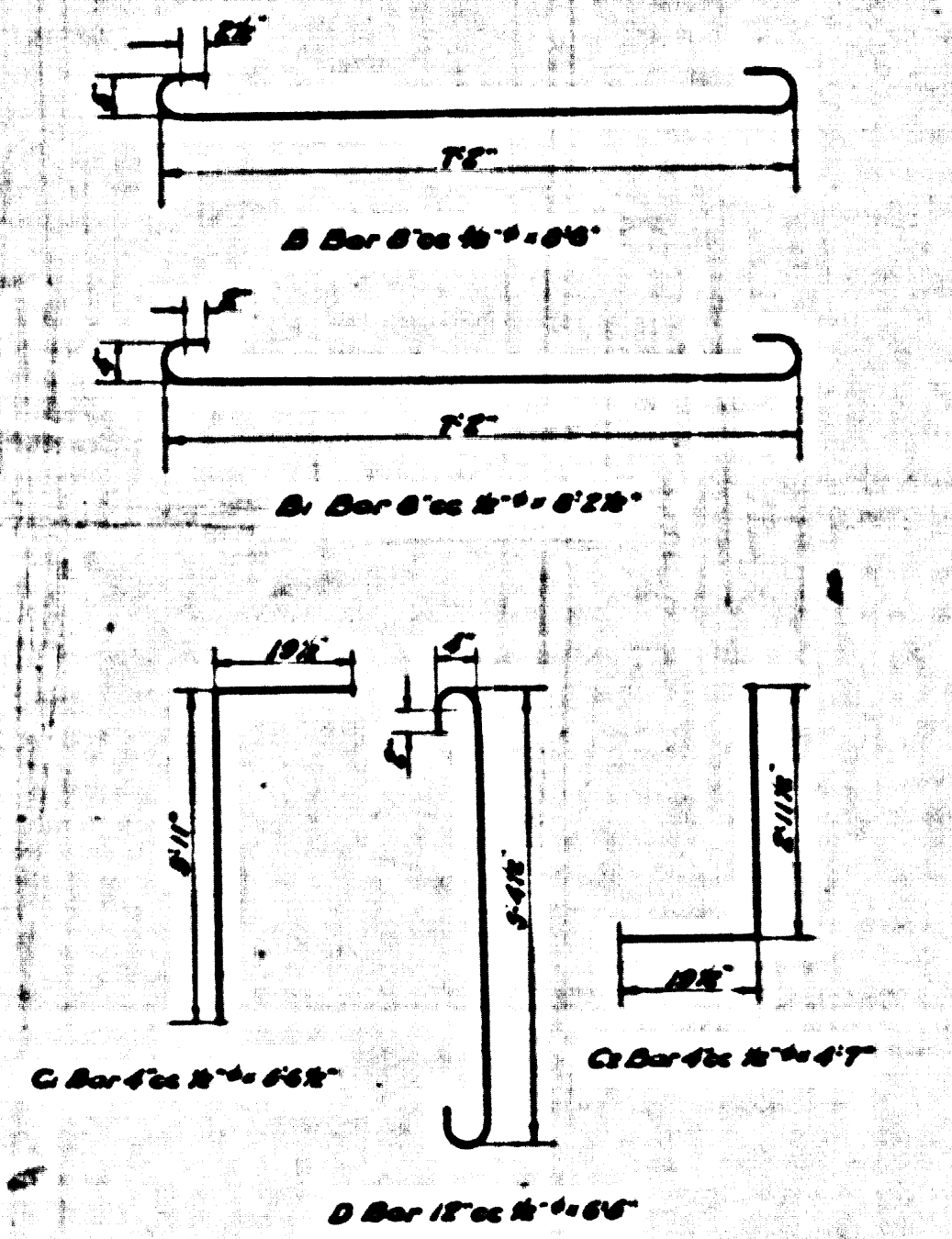
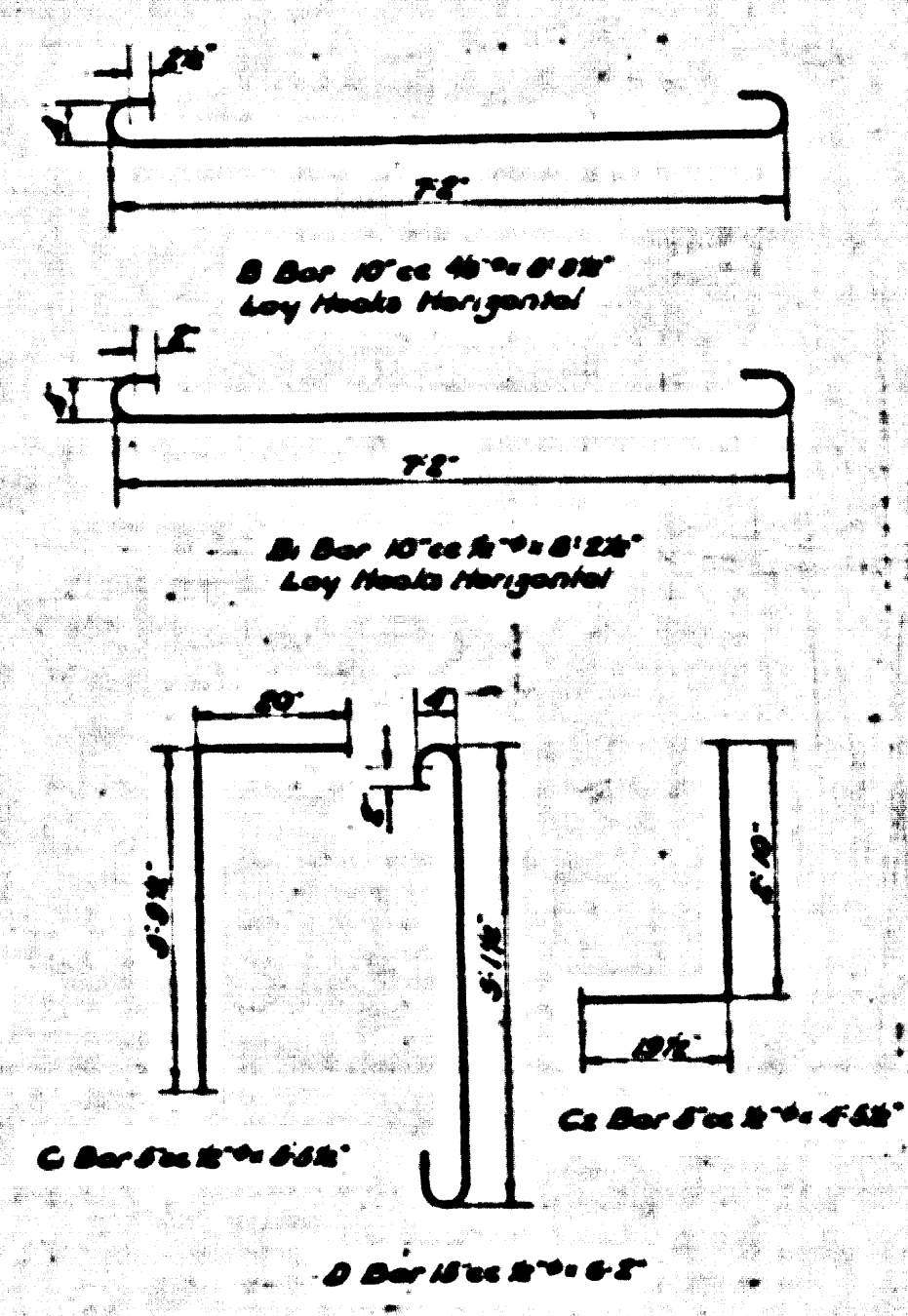
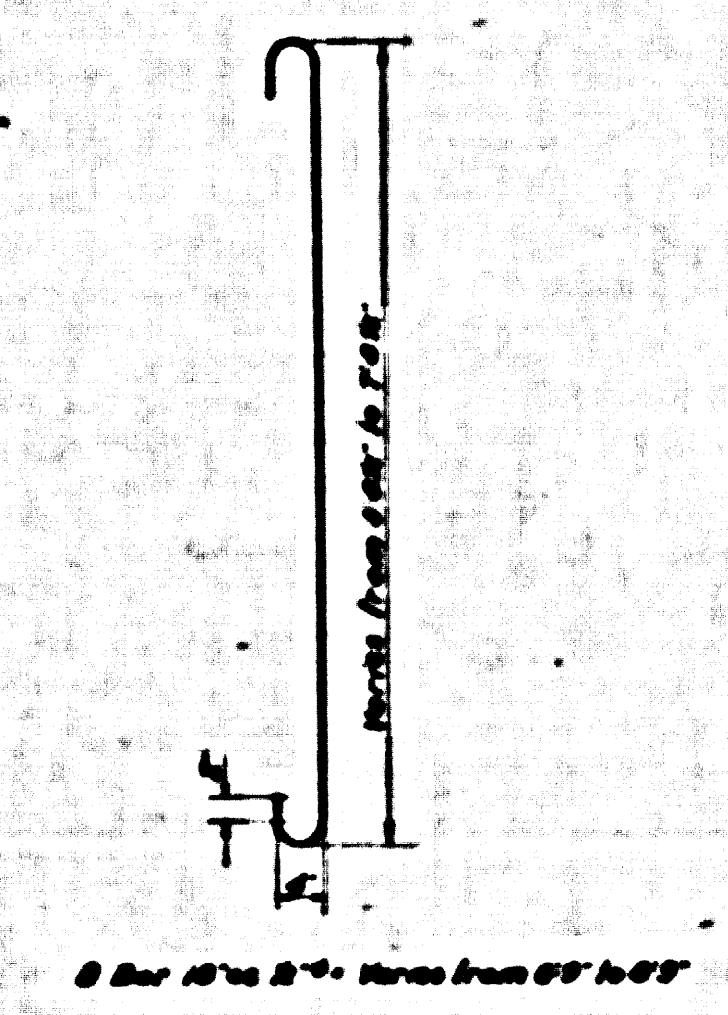
from 17' to 97'

170'-14.48'

from 17' to 97'

170'-14.48'

from 17' to 97'

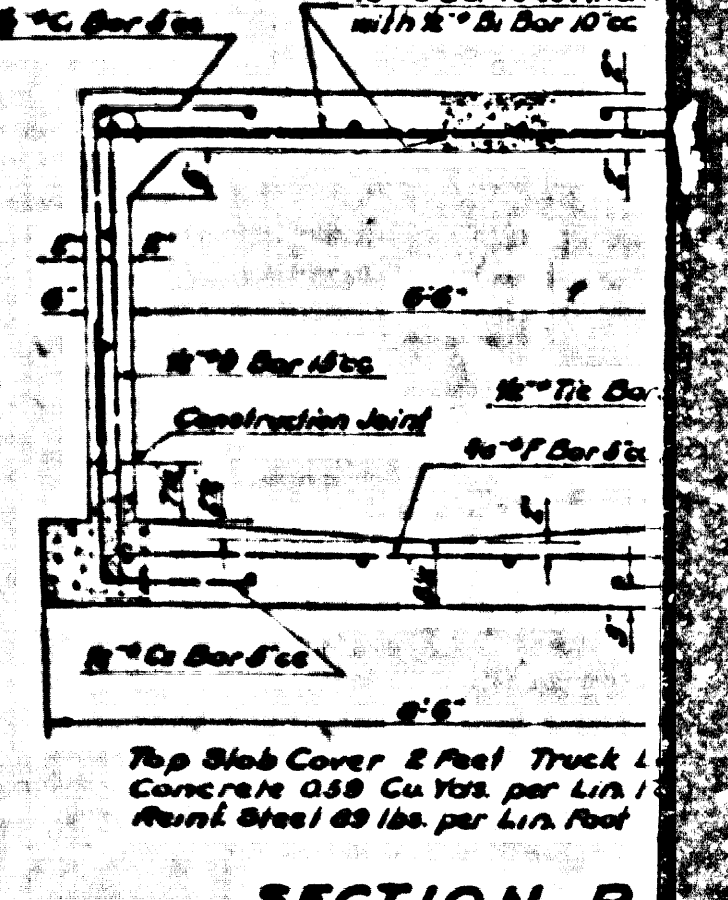
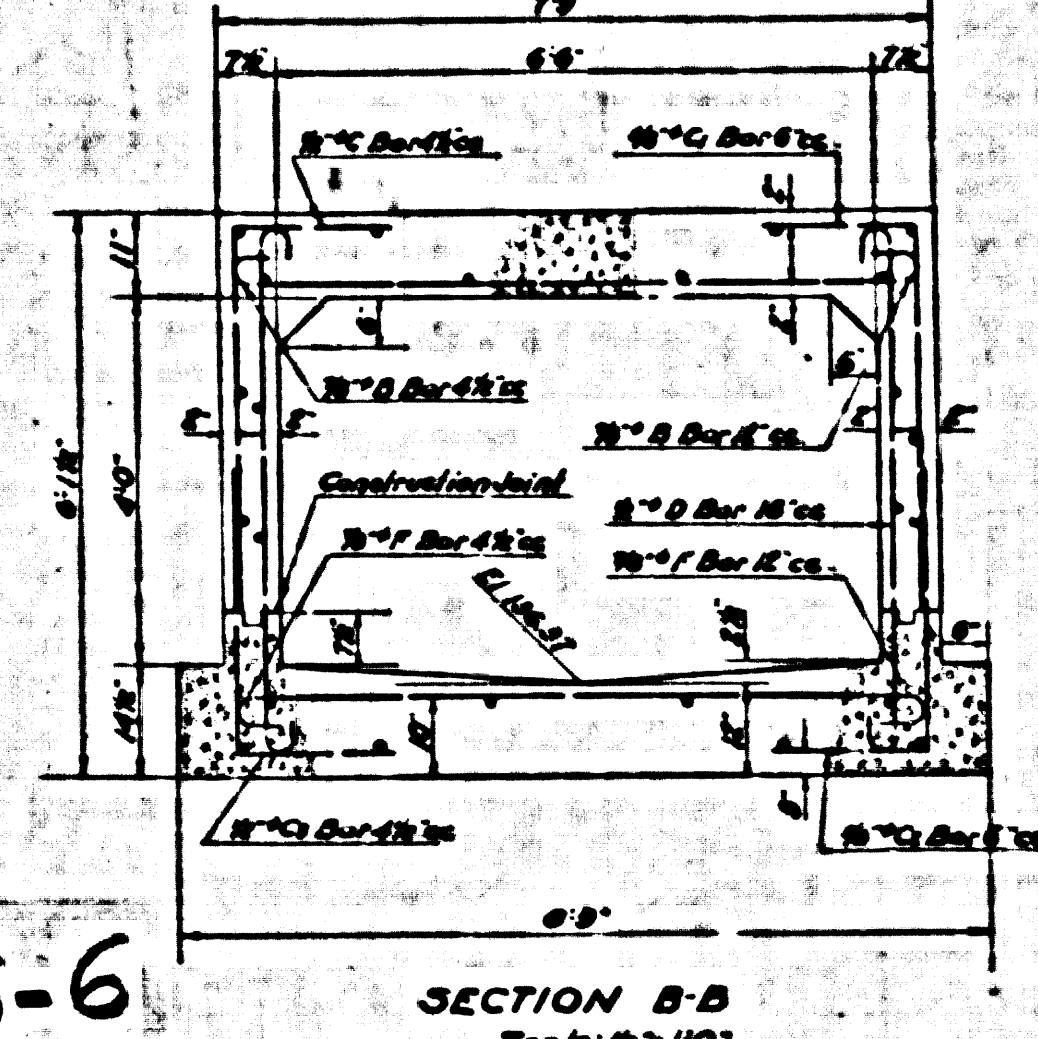
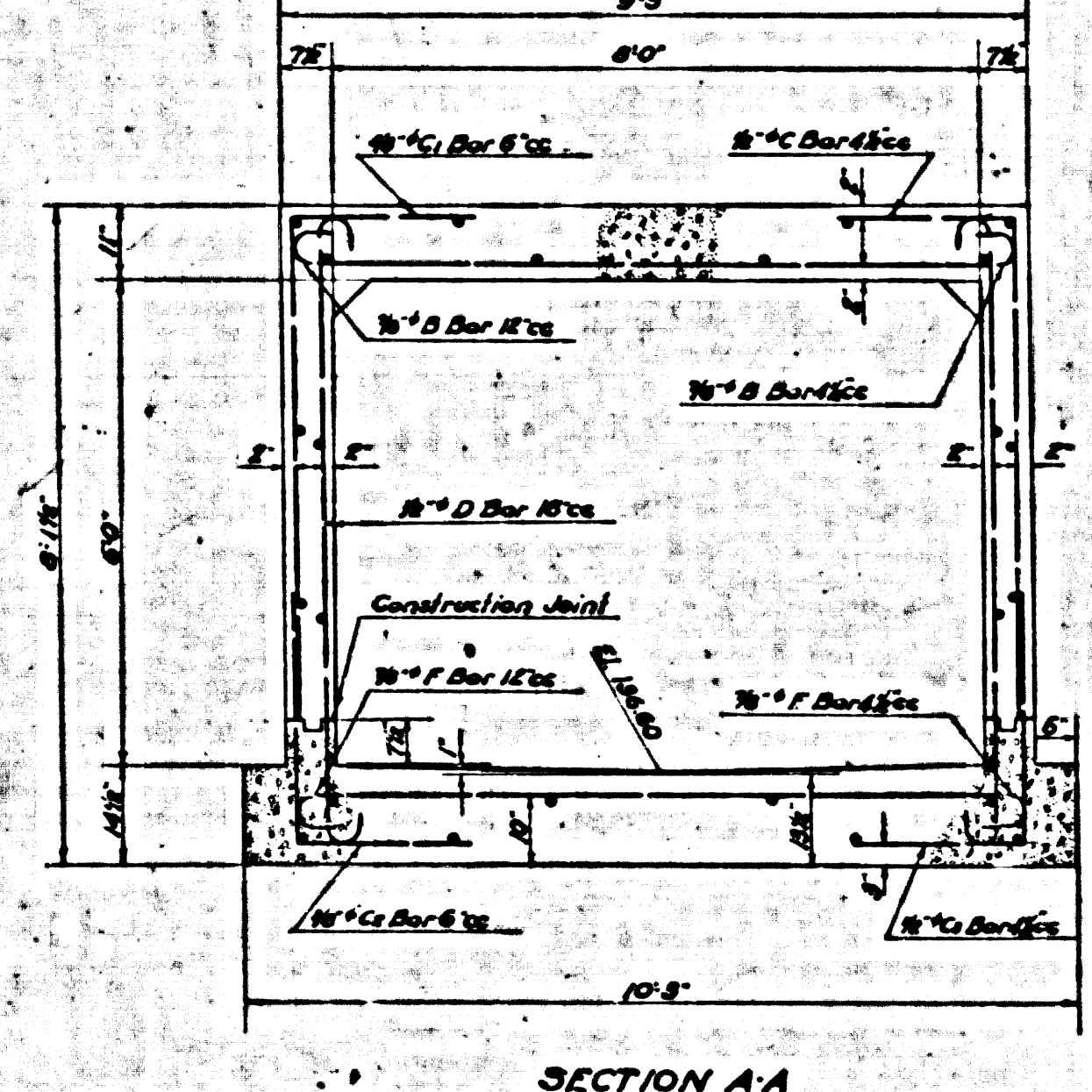
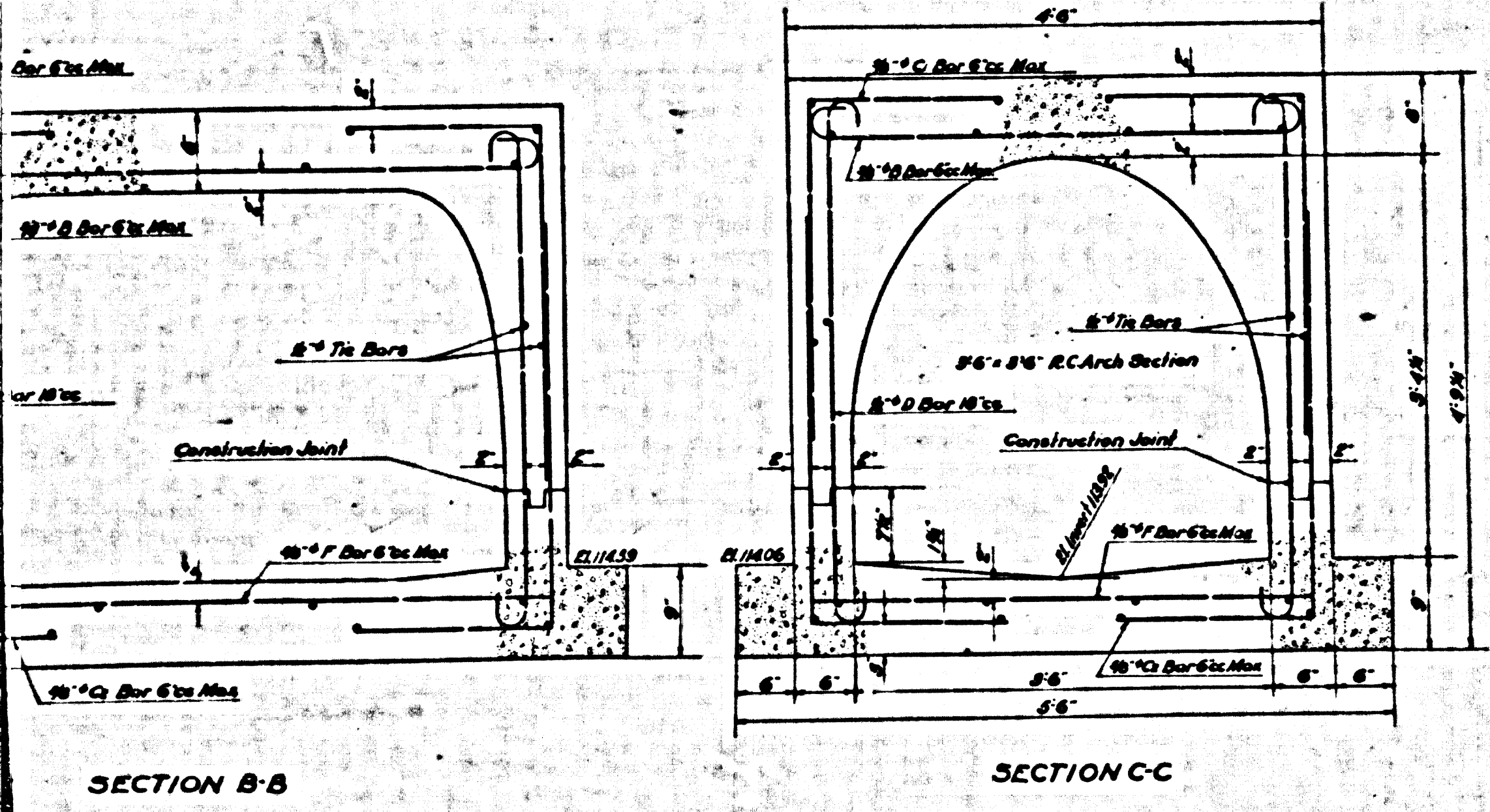
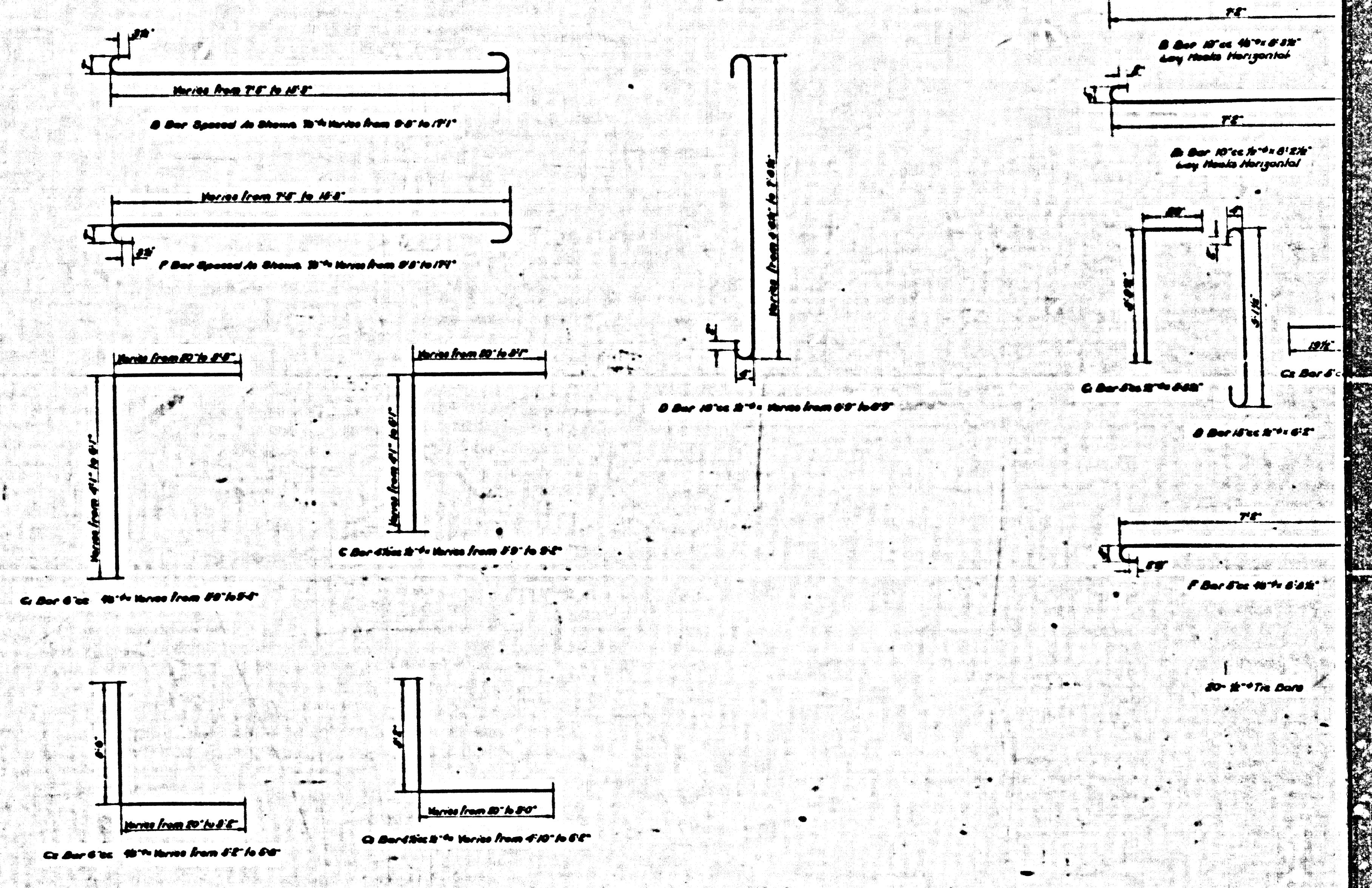
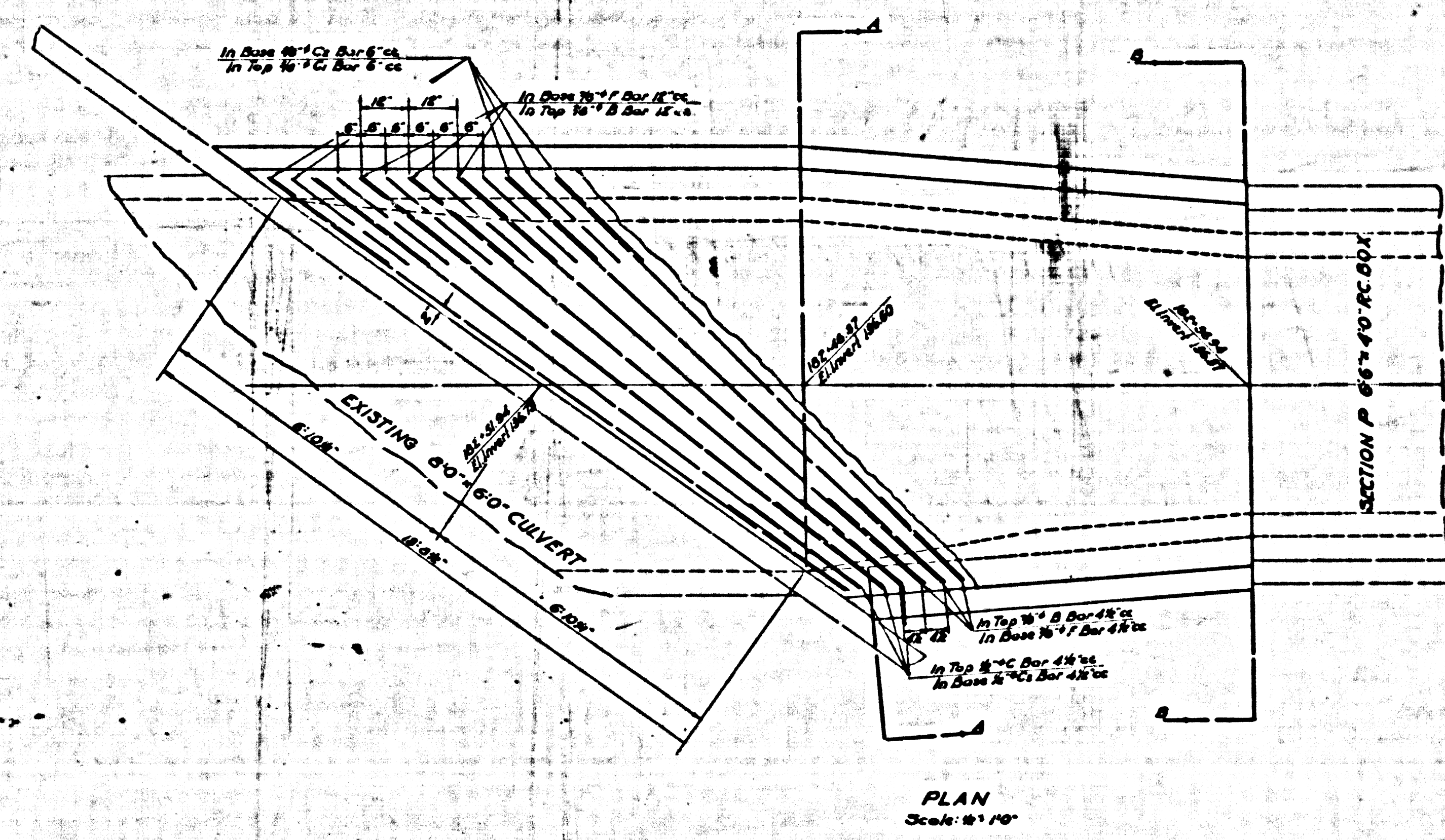
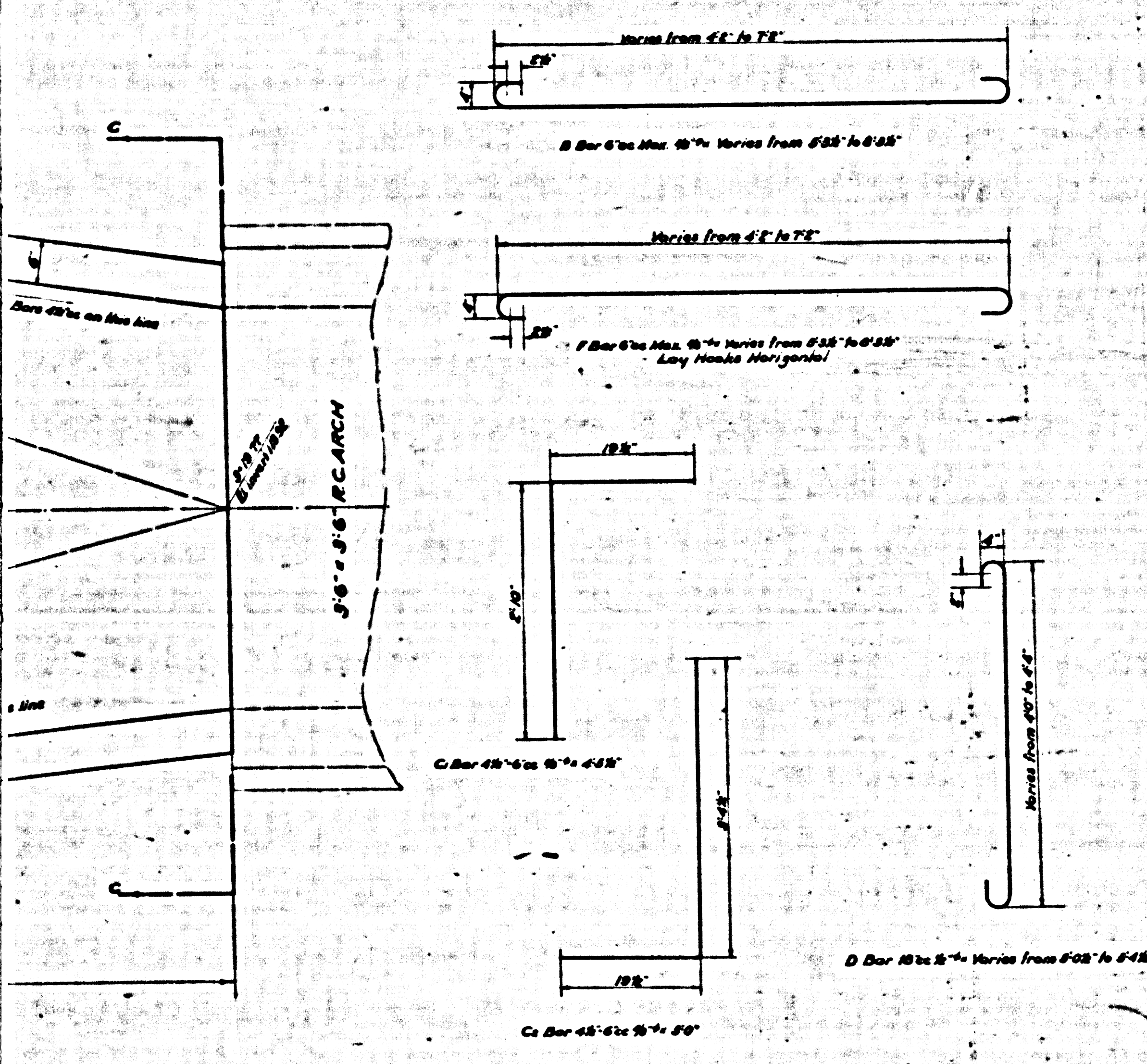


NP 8

CSB-1165-6  
A5 OF A7

SPECIAL

STRUCTURE  
LOMITA BLVD TRUNK STA. 170+03.75



NOTE  
 All P/Bs 5'-0"  
 All Final Transverse 5'-0" Long  
 All Tie Bars 5'-0" Spacing in Section

STRUCTURE  
 CULVERT STUB  
 Scale: 1/4"

Nº 9

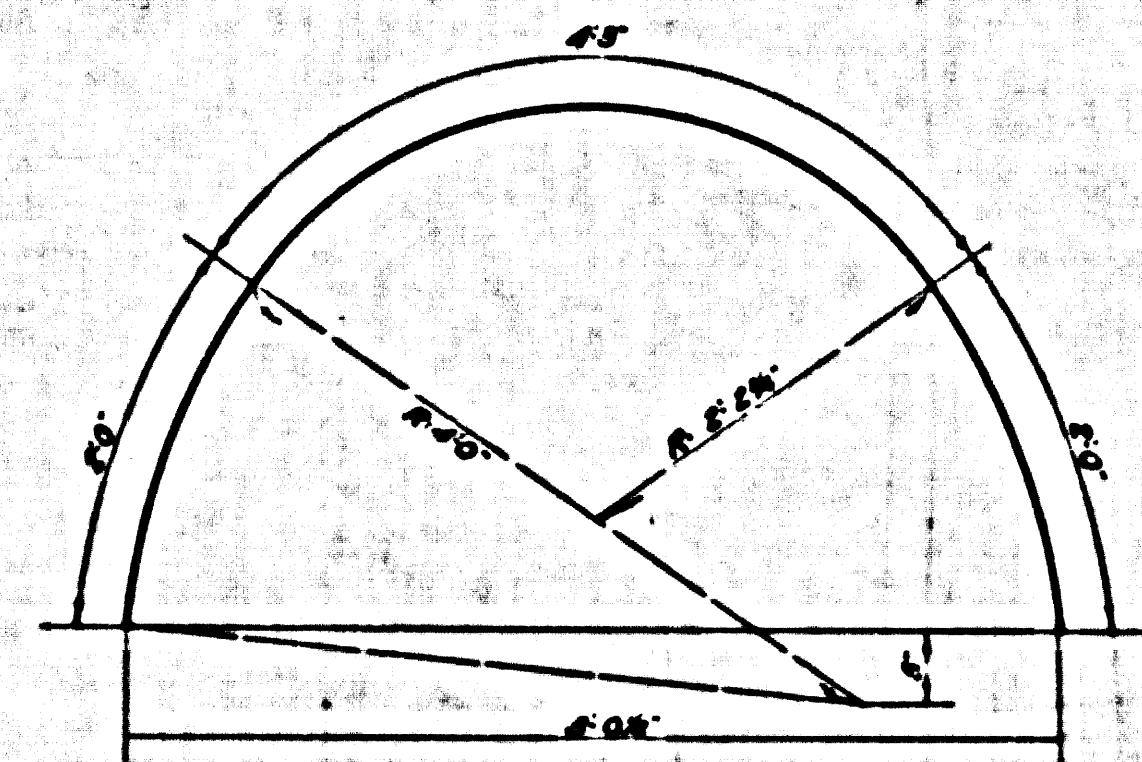
SPECIAL

CSB-1165-6  
 A60FA7

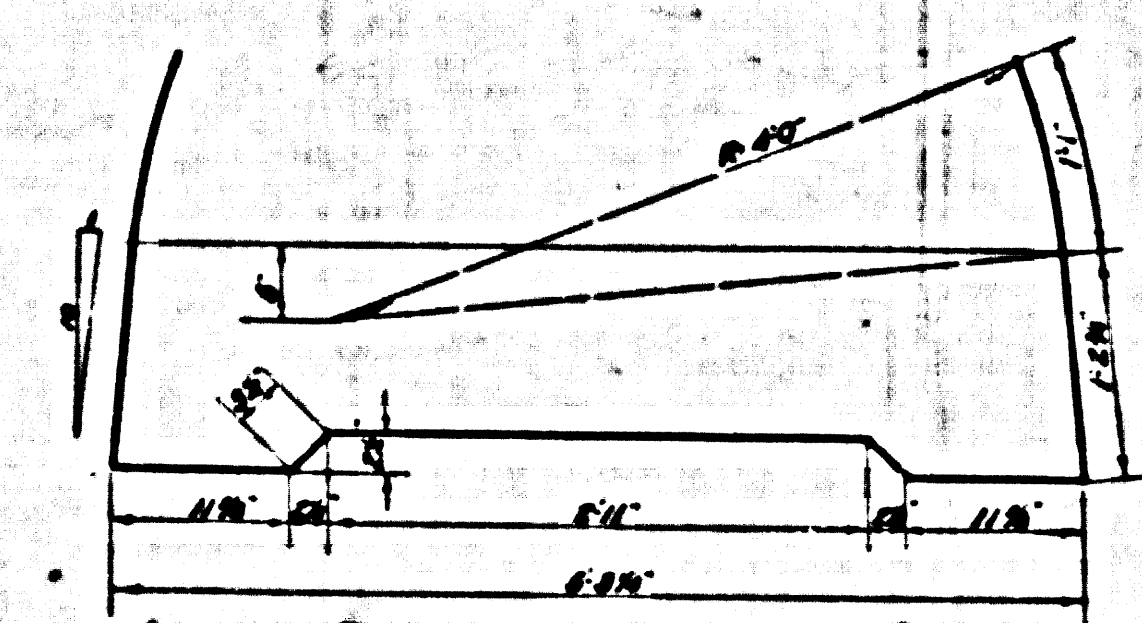
STRUCTURE  
 LOMITA BLVD. TRUNK STA. 102+36.94

Nº 8

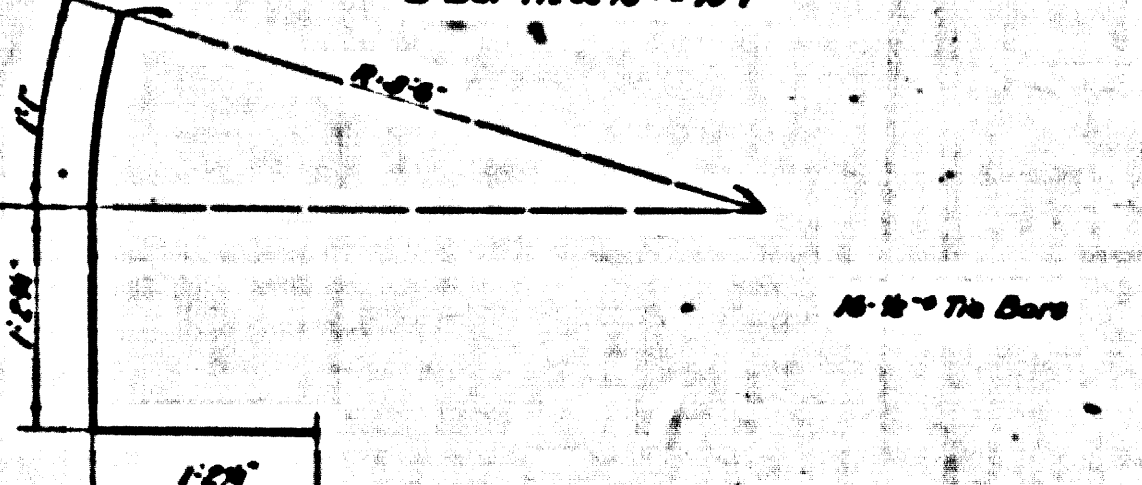
SECTION P  
 REINFC CONC. BOX 66'x40'  
 LOMITA TRUNK  
 Scale: 1/4"



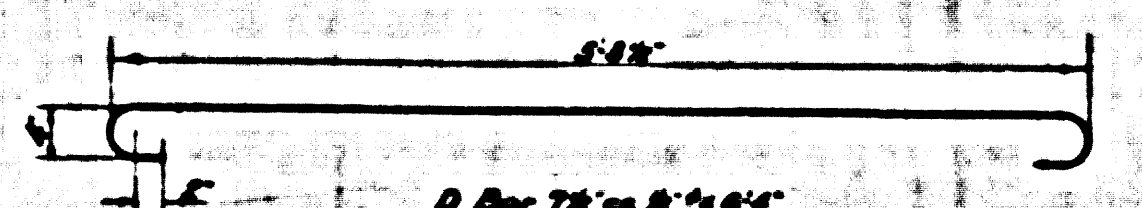
A Bar 7/8" dia 8'-0"



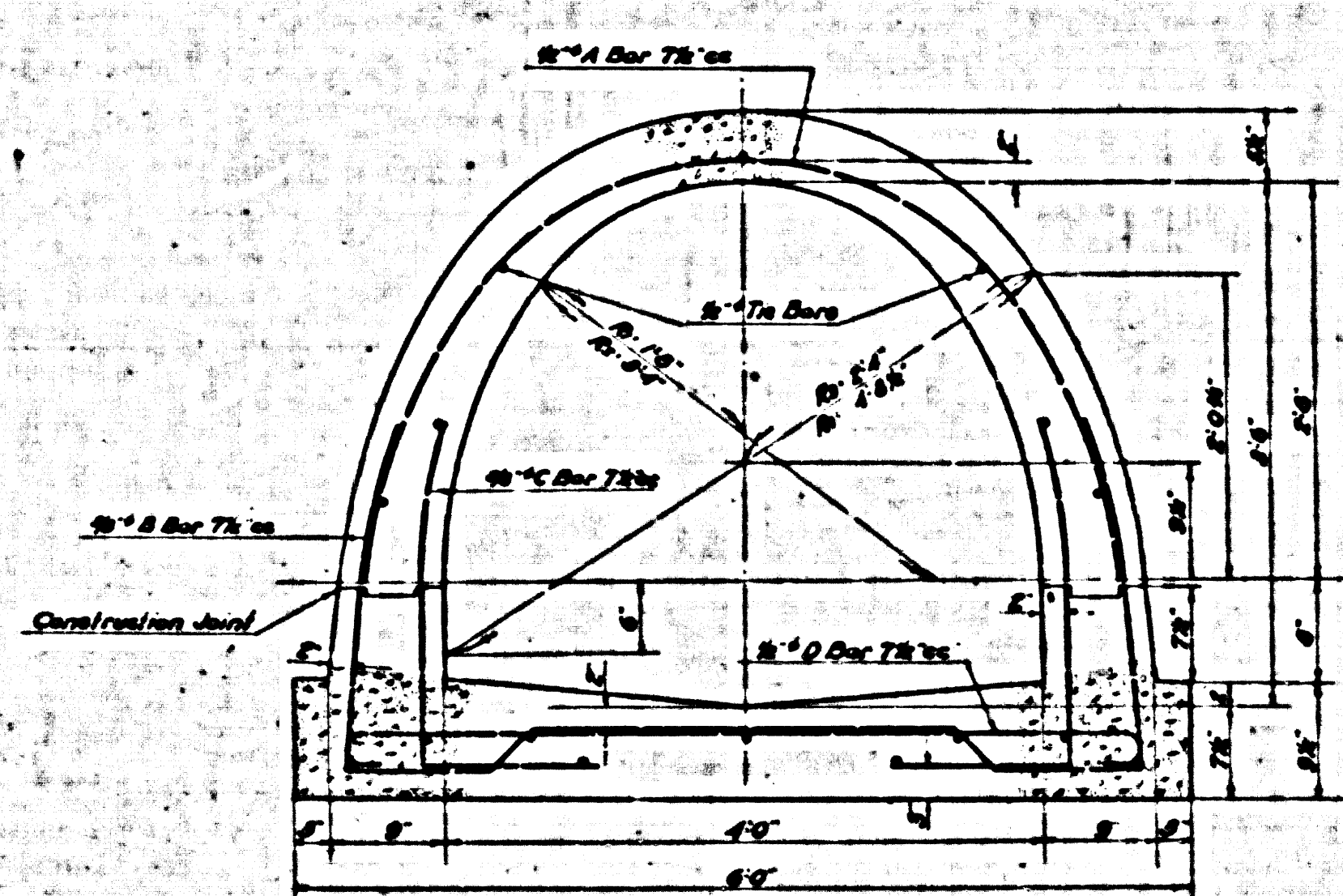
B Bar 7/8" dia 10'-0"



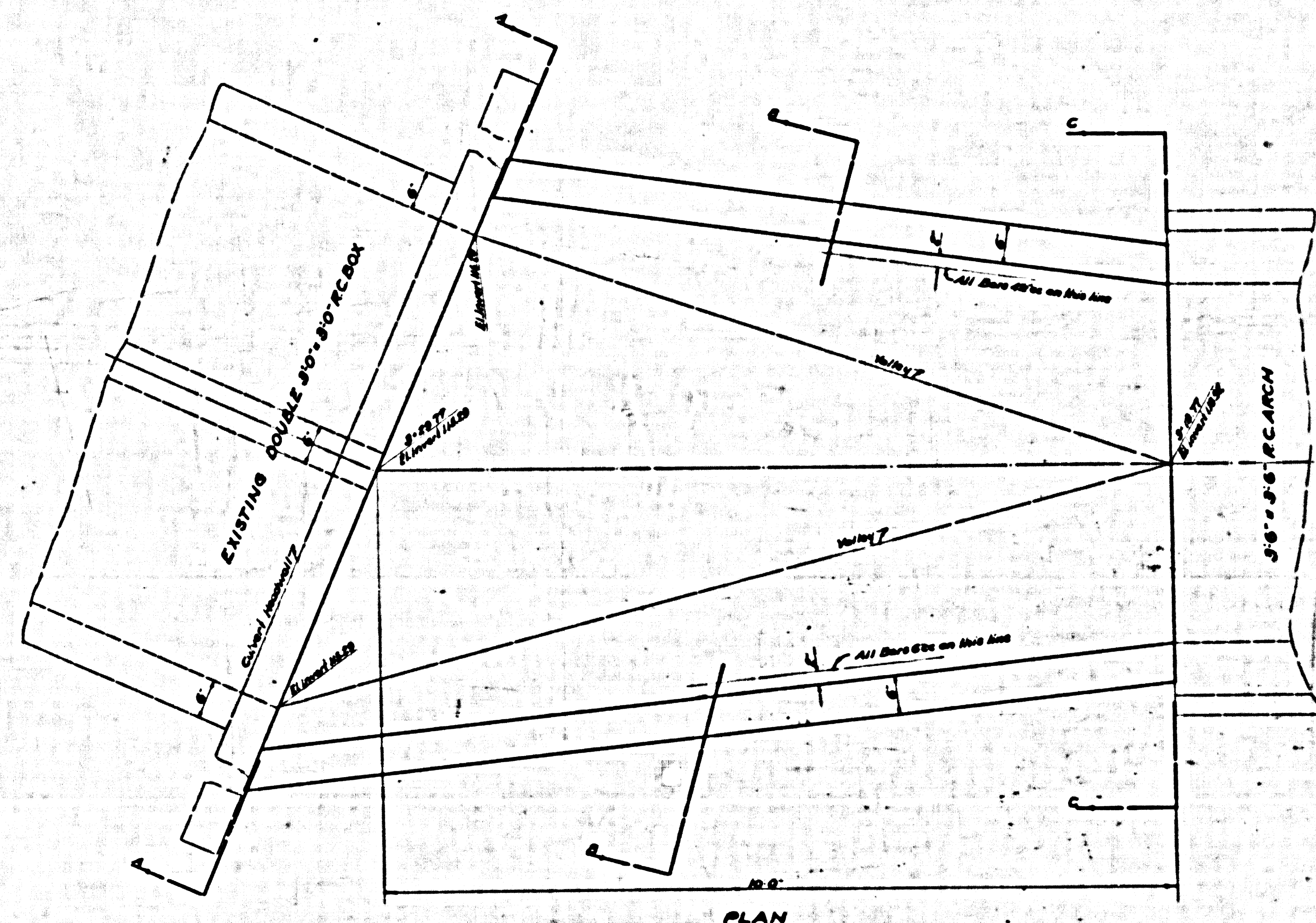
C Bar 7/8" dia 10'-0"



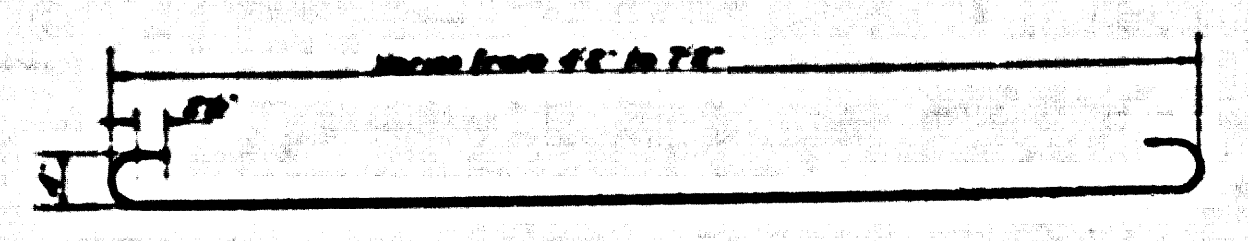
D Bar 7/8" dia 8'-0"



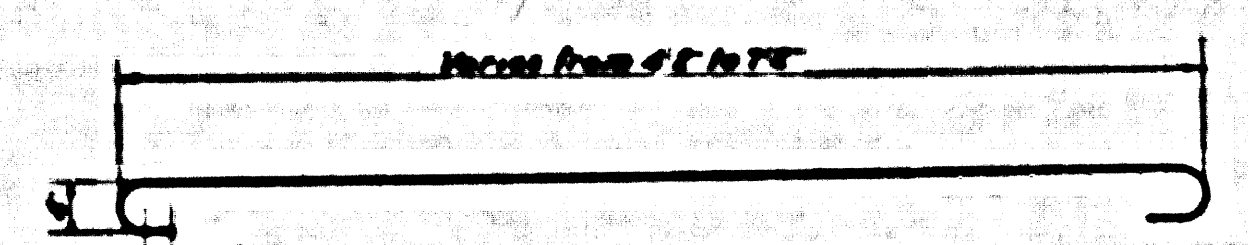
**SPECIAL ARCH SECTION I**  
4'-0" x 8'-6" R.C. ARCH  
CYPRESS ST BRANCH STA. 8+00 TO STA. 15+87  
Scale: 1" = 1'-0"



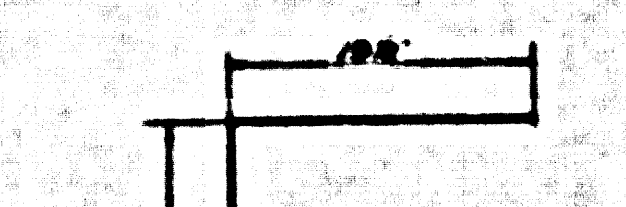
PLAN



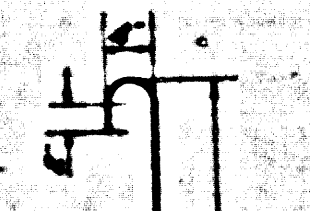
7/8" Bar dia 8'-0" Lap Length 1'-0"



7/8" Bar dia 8'-0" Lap Length 1'-0"

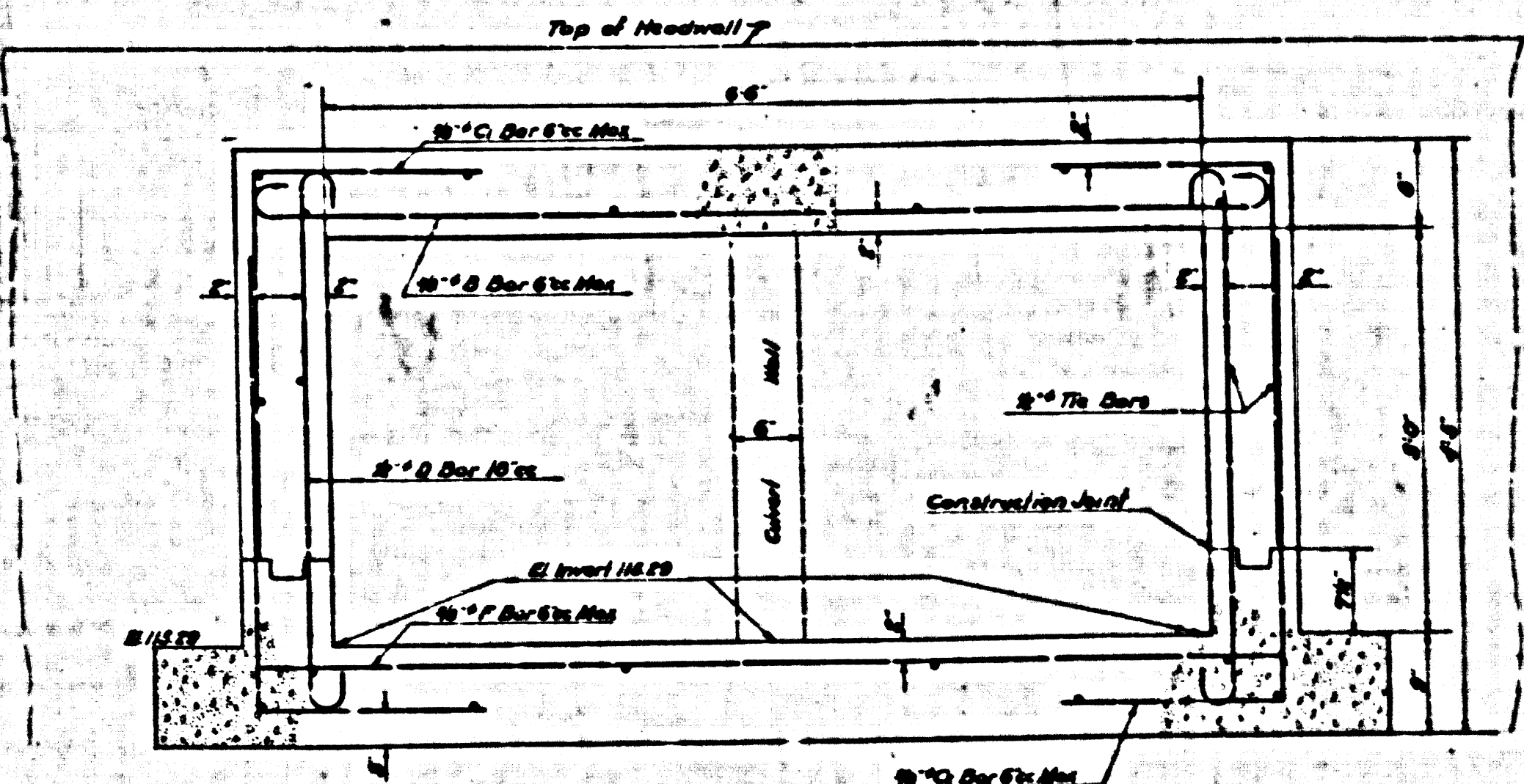


7/8" Bar dia 8'-0"

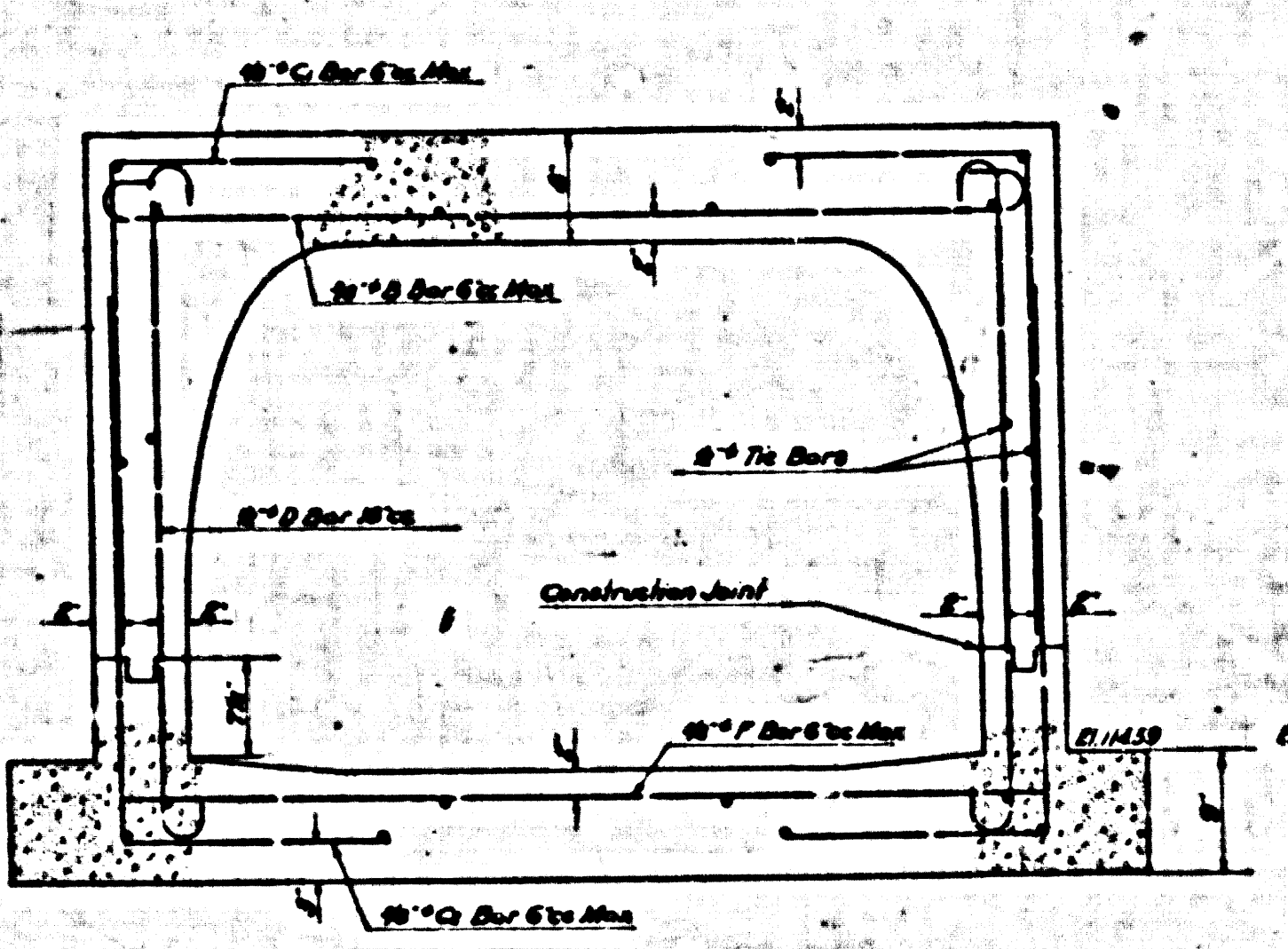


7/8" Bar dia 8'-0"

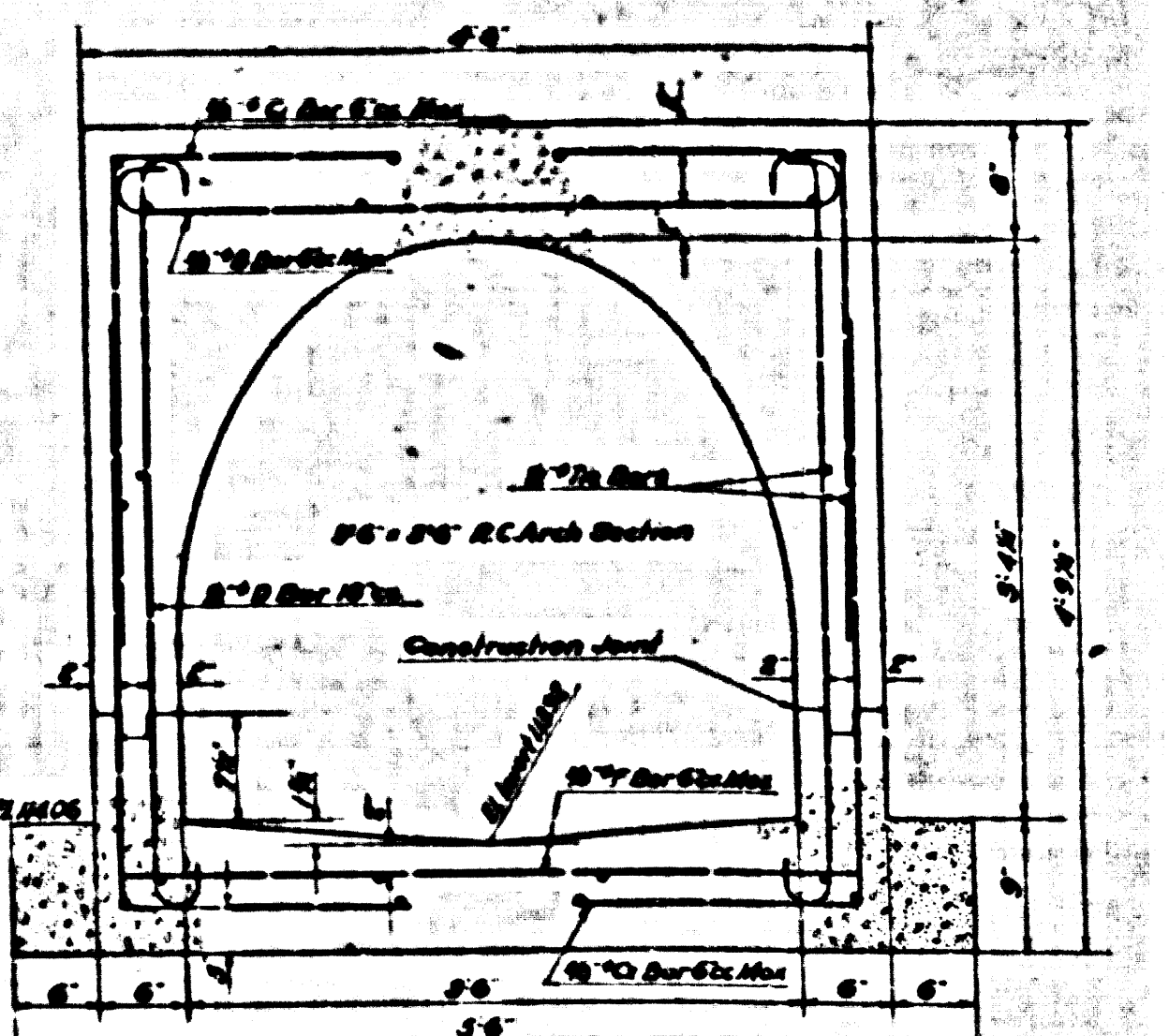
7/8" Bar dia 8'-0"



SECTION A-A



SECTION B-B



SECTION C-C

CSB-1165-6  
A70FA7

SPECIAL

STRUCTURE  
CULVERT STUD

NS9



