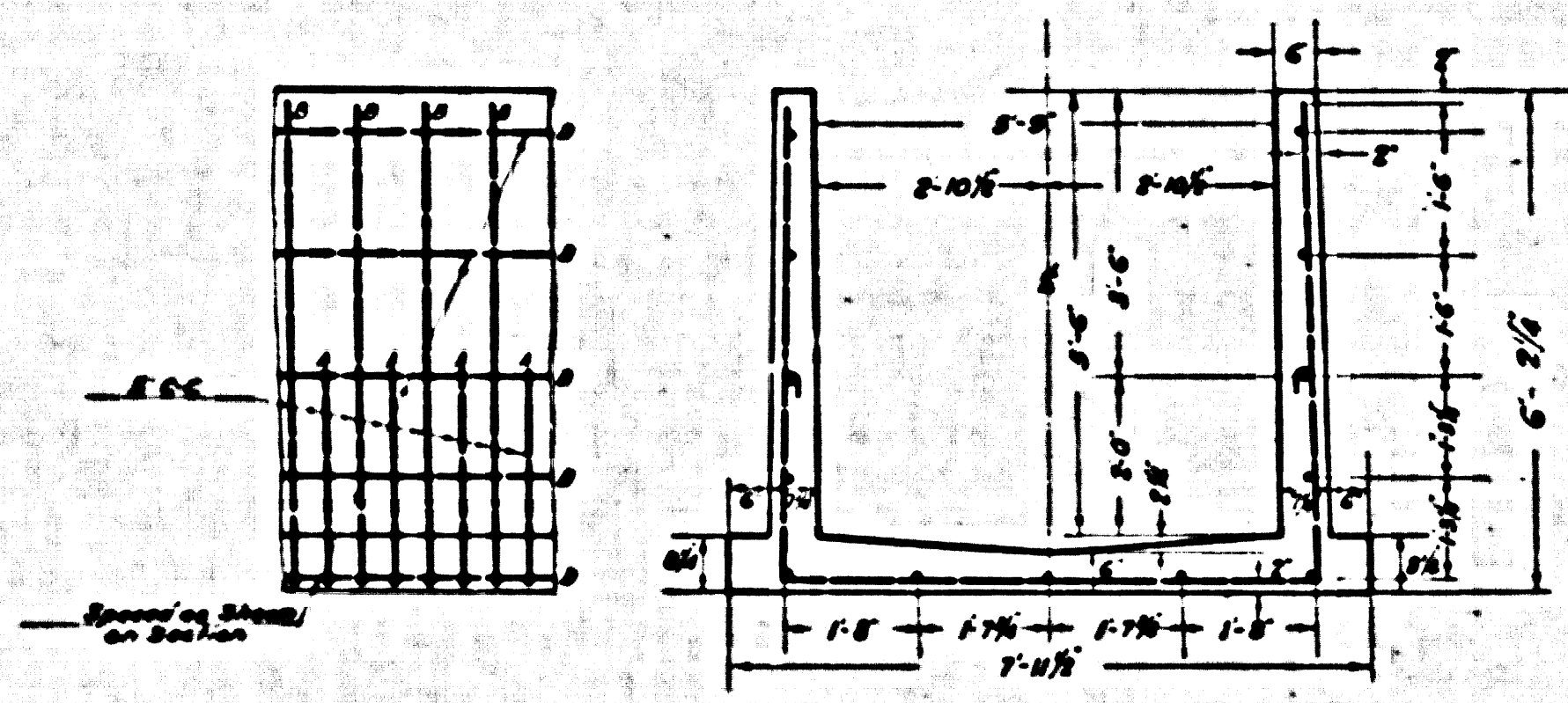
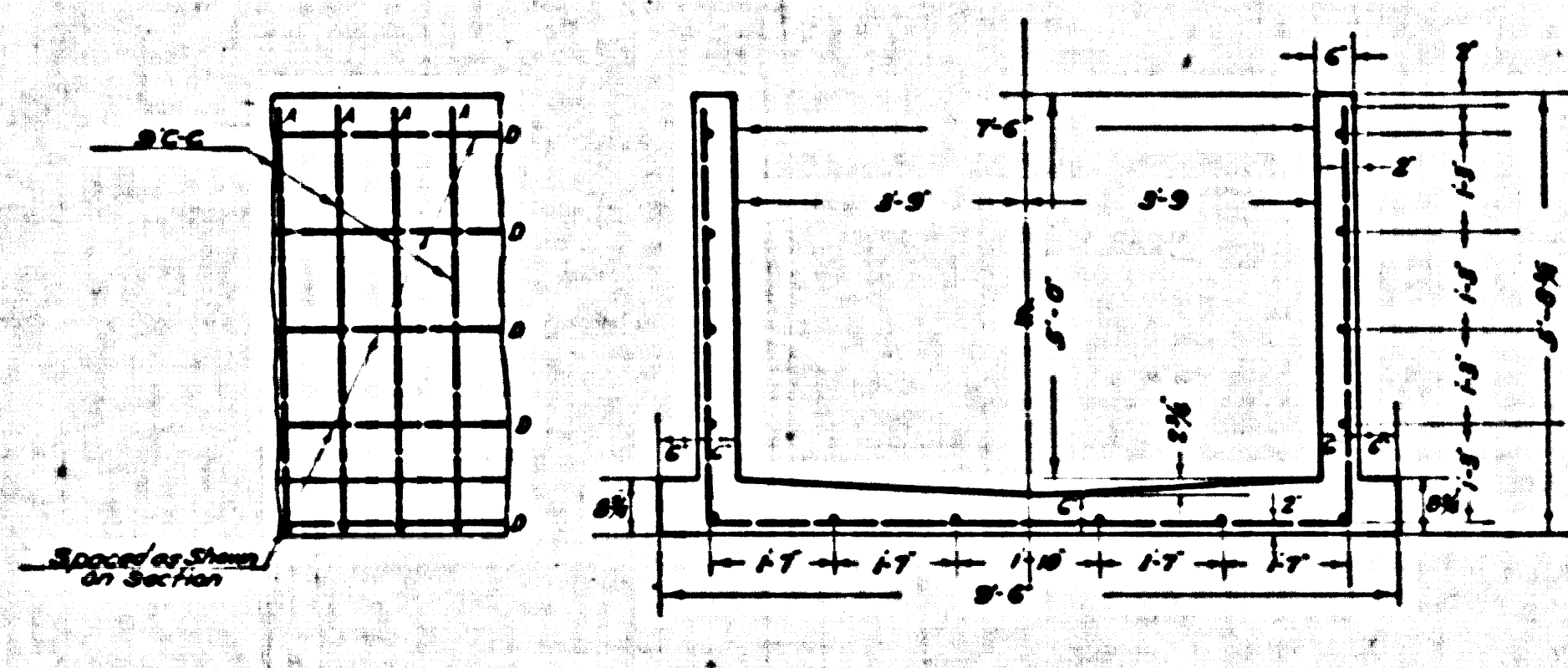


Trim Print to this Line



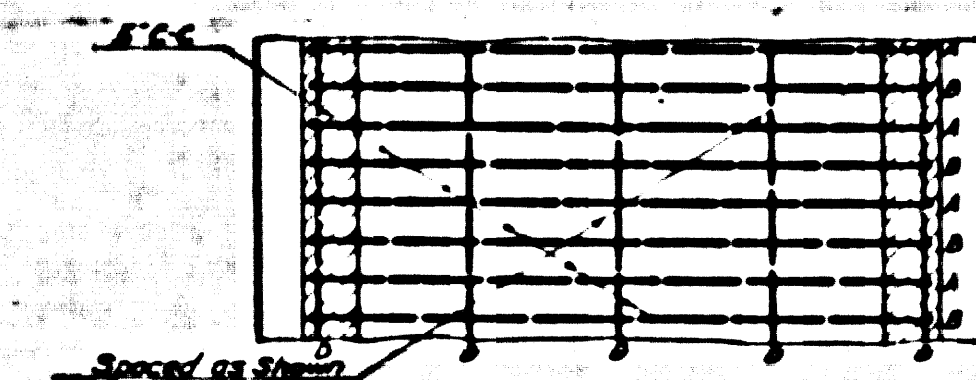
ELEVATION

SECTION

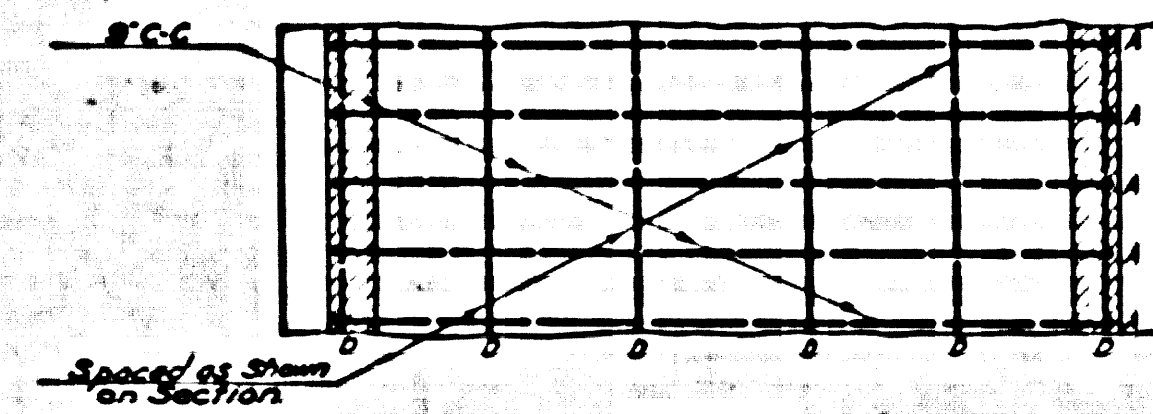


ELEVATION

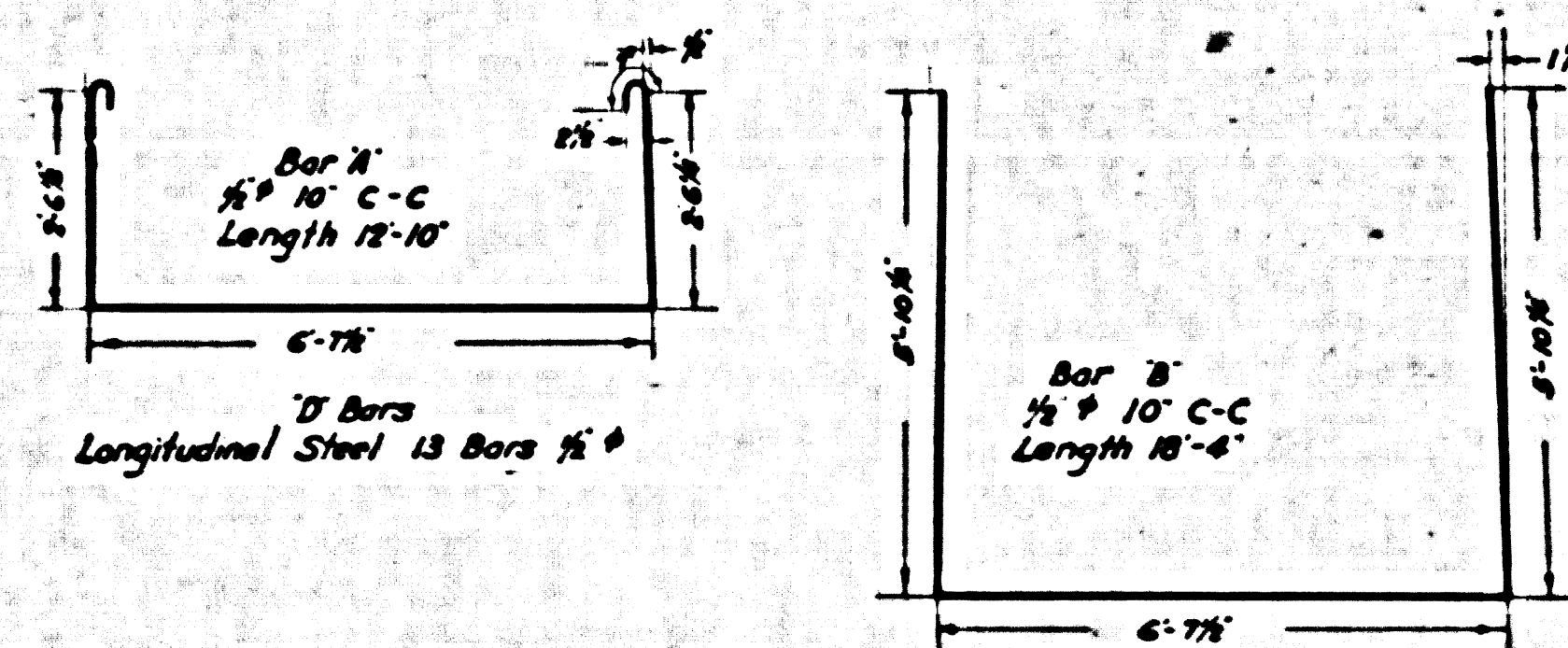
SECTION



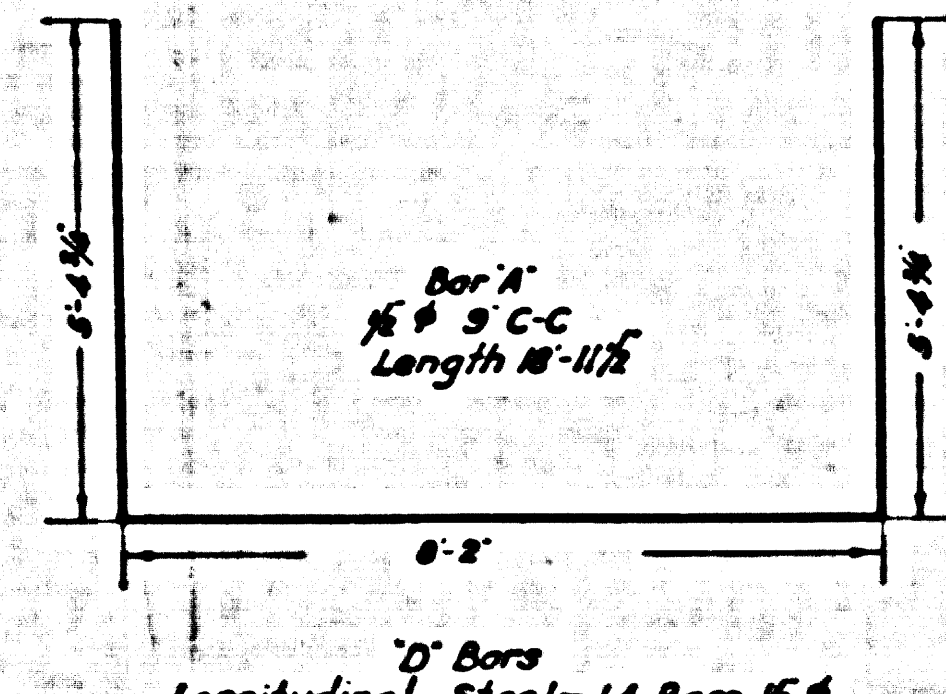
PLAN



PLAN



Total Length 1349 Feet
 Class A-1 Concrete 4076 Cu Yds. per lineal foot
 Reinforcing Steel 348 2720 Pounds per lineal foot
 Dimensions to Reinforcing Steel Refer to Center Lines



Total Length 2007 1/2 Feet
 Class A-1 Concrete 4059 Cu Yds. per lineal foot
 Reinforcing Steel 36 1089 Pounds per lineal foot
 Dimensions to Reinforcing Steel Refer to Center Lines

REINFORCED CONCRETE OPEN BOX 5-9x5-6

SECTION 2

FROM STATION 19+00.00 TO STATION 24+06.00
 11+17.00 18+80.00

RUSSELL STREET LINE

SCALE: 1/2"=1'

REINFORCED CONCRETE OPEN BOX 7-6x5-0

SECTION 1

FROM STATION 3+46.26 TO STATION 9+87.05
 10+01.05 10+61.00

RUSSELL STREET LINE

SCALE: 1/2"=1'

CSB-1166-2
 A10FA4

NOTES:
 Elevations are in feet above U.S.G.S. or mean Sea Level Datum.
 All reinforced concrete structures shall be Class A-1 Concrete.
 Weep holes 1/4" in diameter shall be placed in each sidewall and spaced not more than five feet each way.

RUSSELL STREET DRAINAGE SYSTEM
 OF THE COUNTY OF LOS ANGELES, CALIFORNIA

DETAILS OF OPEN BOX SECTIONS.

SHEET 2 OF 3 SHEETS

SCALE AS SHOWN

DECEMBER 1935

ALFRED JONES

COUNTY SURVEYOR

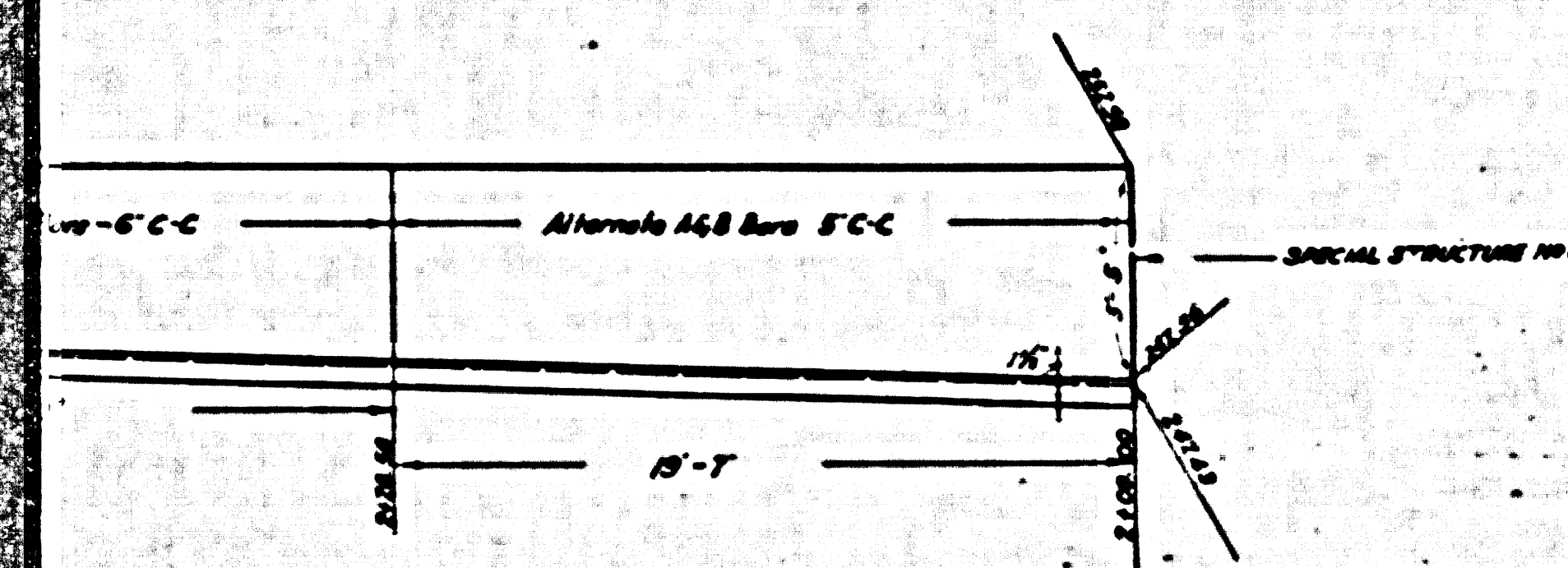
RECOMMENDED

APPROVED

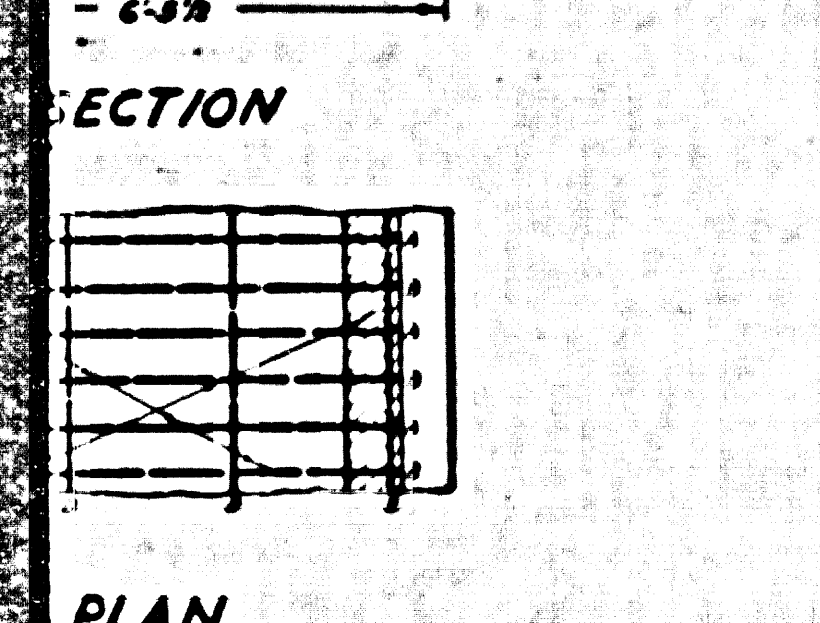
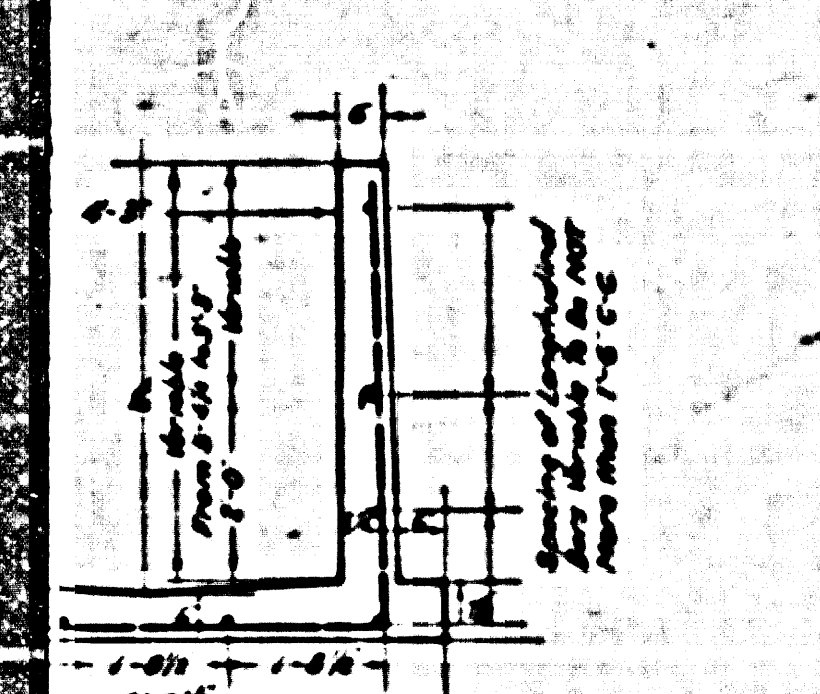
REFERENCE	DESIGNED	J.H. Rice	MAR. 1935
	TRACED	V.L. Van Wagner	APRIL 1935
	CHECKED	E.E. Mitchell	APRIL 1935

2

Trim Print to this Line



Dimensions given in TYPICAL SECTION are the same throughout SECTION 8. The dimensions shown on TYPICAL SECTION are shown on ELEVATION above.



SECTION

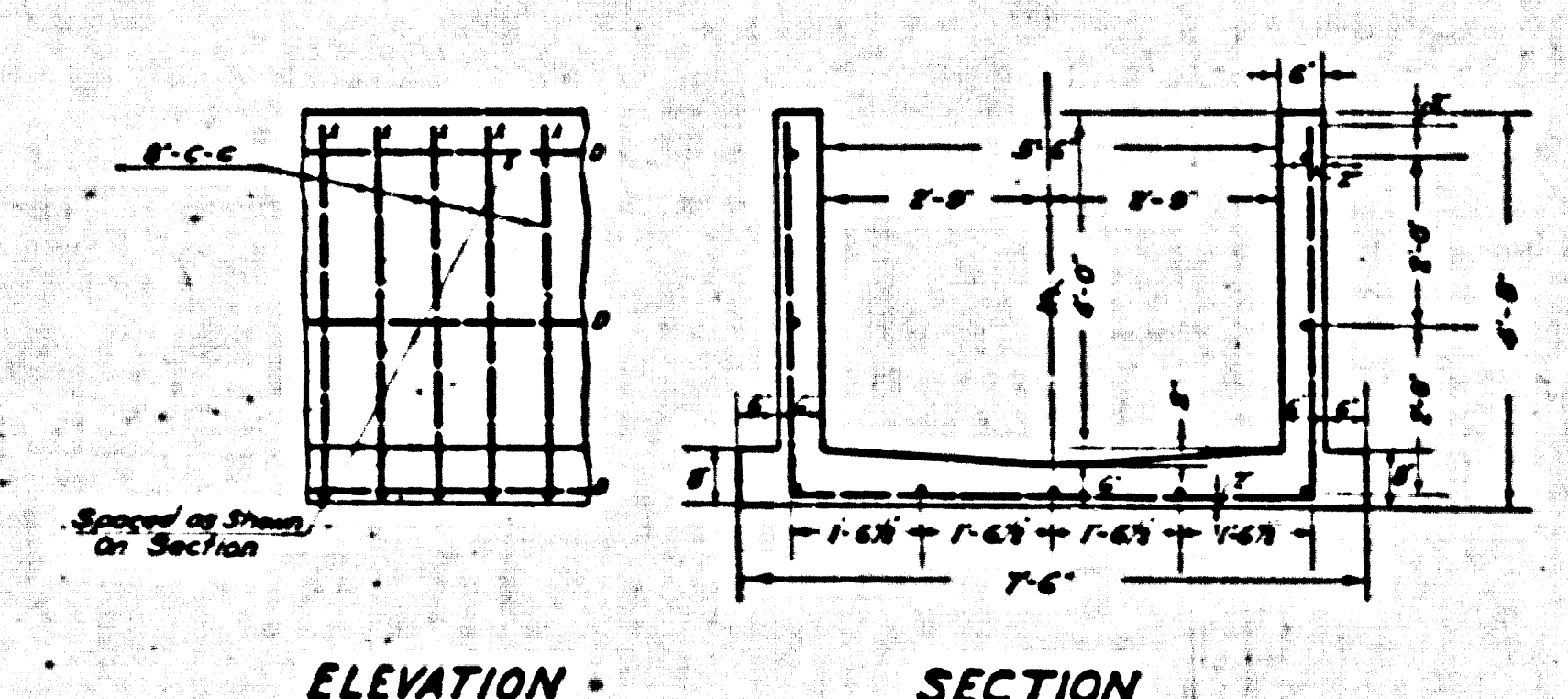
PLAN

SECTION

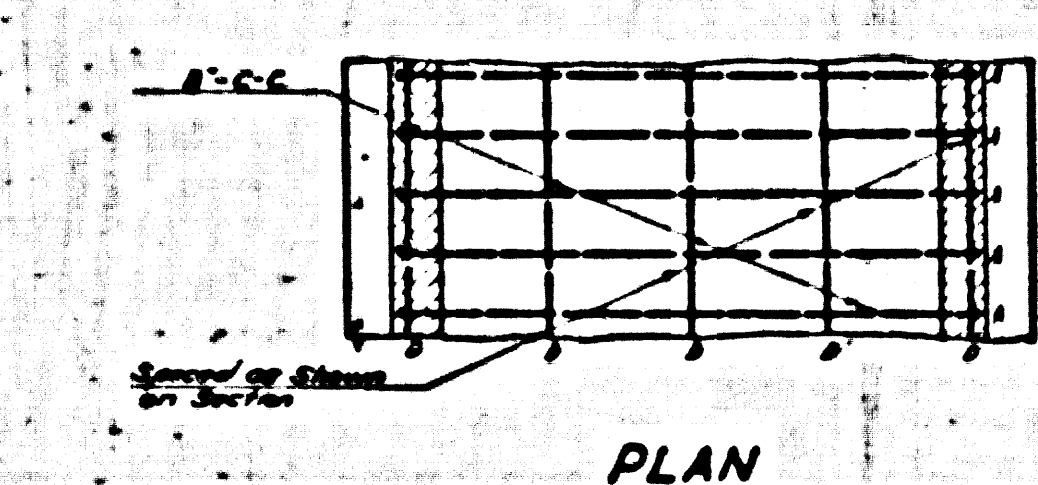
PLAN

SECTION

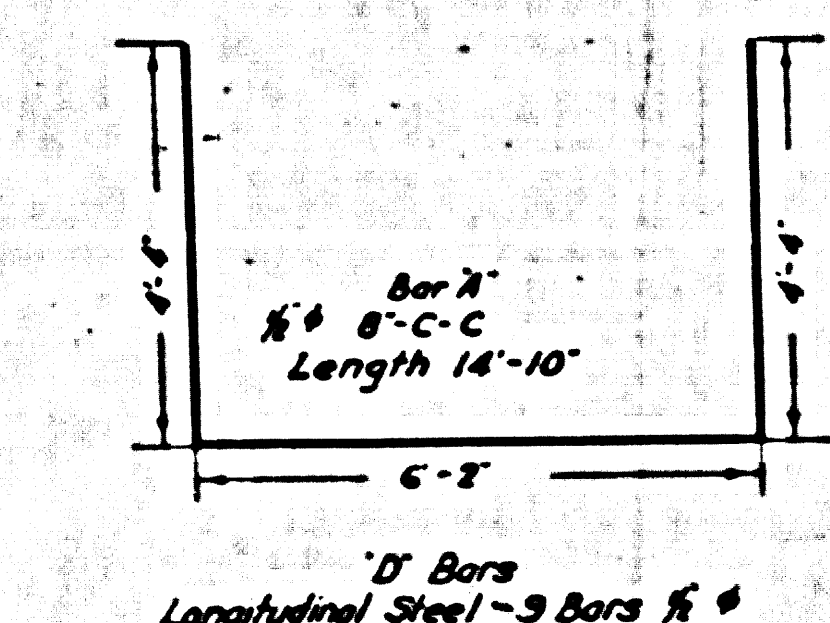
PLAN



ELEVATION SECTION



PLAN



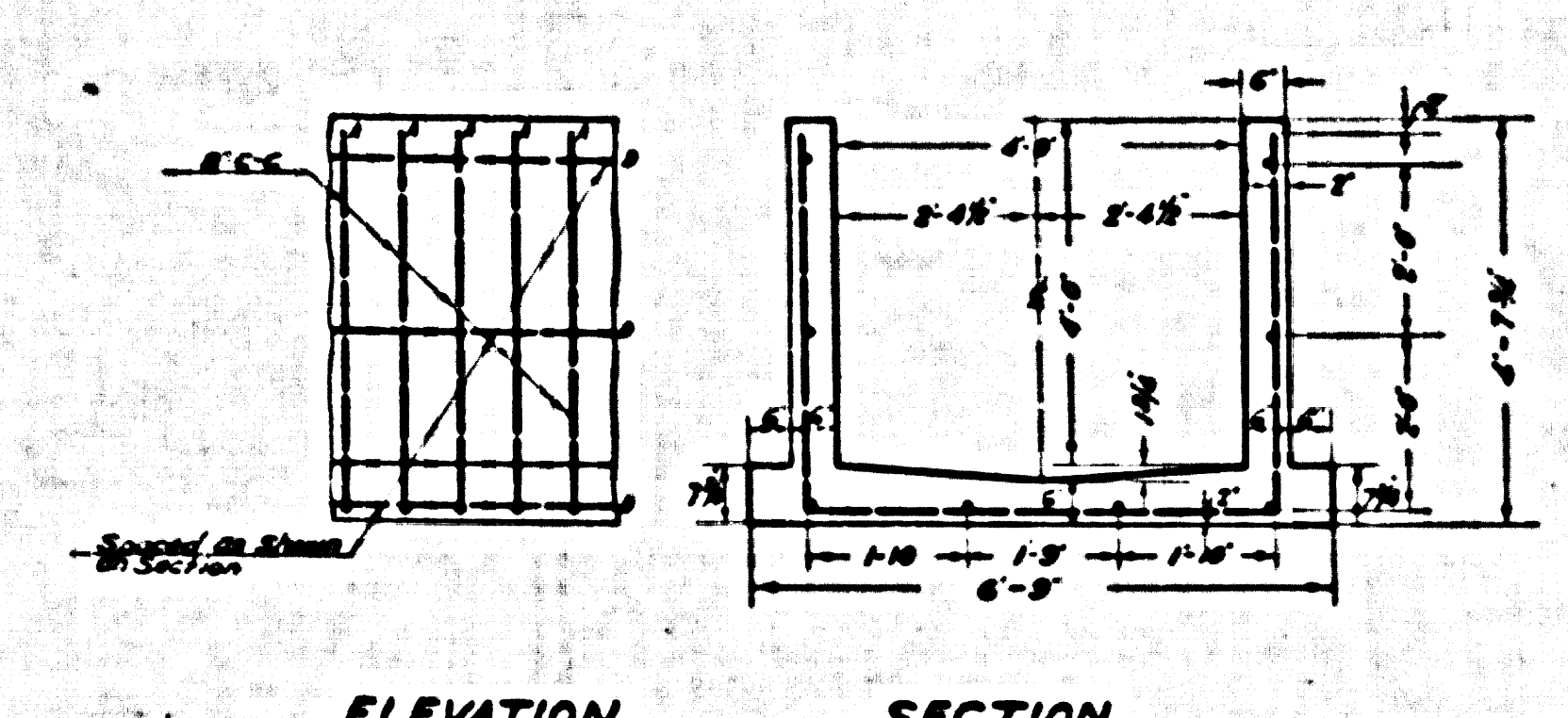
D-Bars Longitudinal Steel - 3 Bars # 8

Total Length 118 Feet
Class A-1 Concrete - 366 Cu Yds per linear foot
Reinforcing Steel - 21,250 Pounds per linear foot
Dimensions to Reinforcing Steel refer to Center Lines

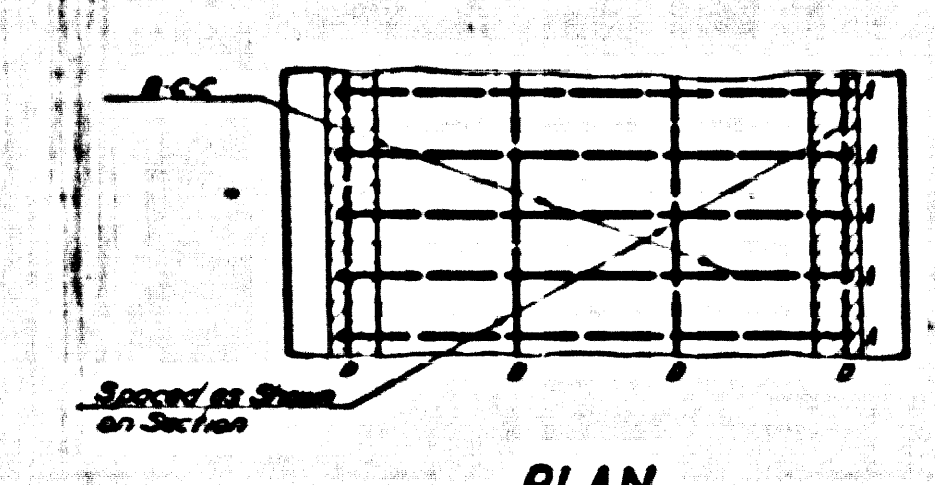
REINFORCED CONCRETE OPEN BOX 5'-6" x 4'-0"
SECTION 7

FROM STATION 48+39.40 TO STATION 49+51.40
RUSSELL STREET LINE

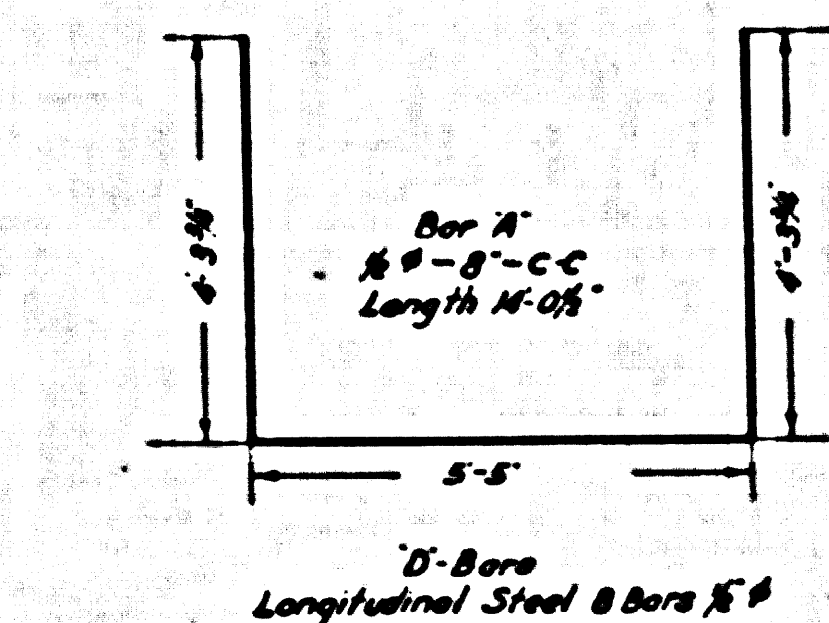
SCALE: 1/4" = 1'



ELEVATION SECTION



PLAN



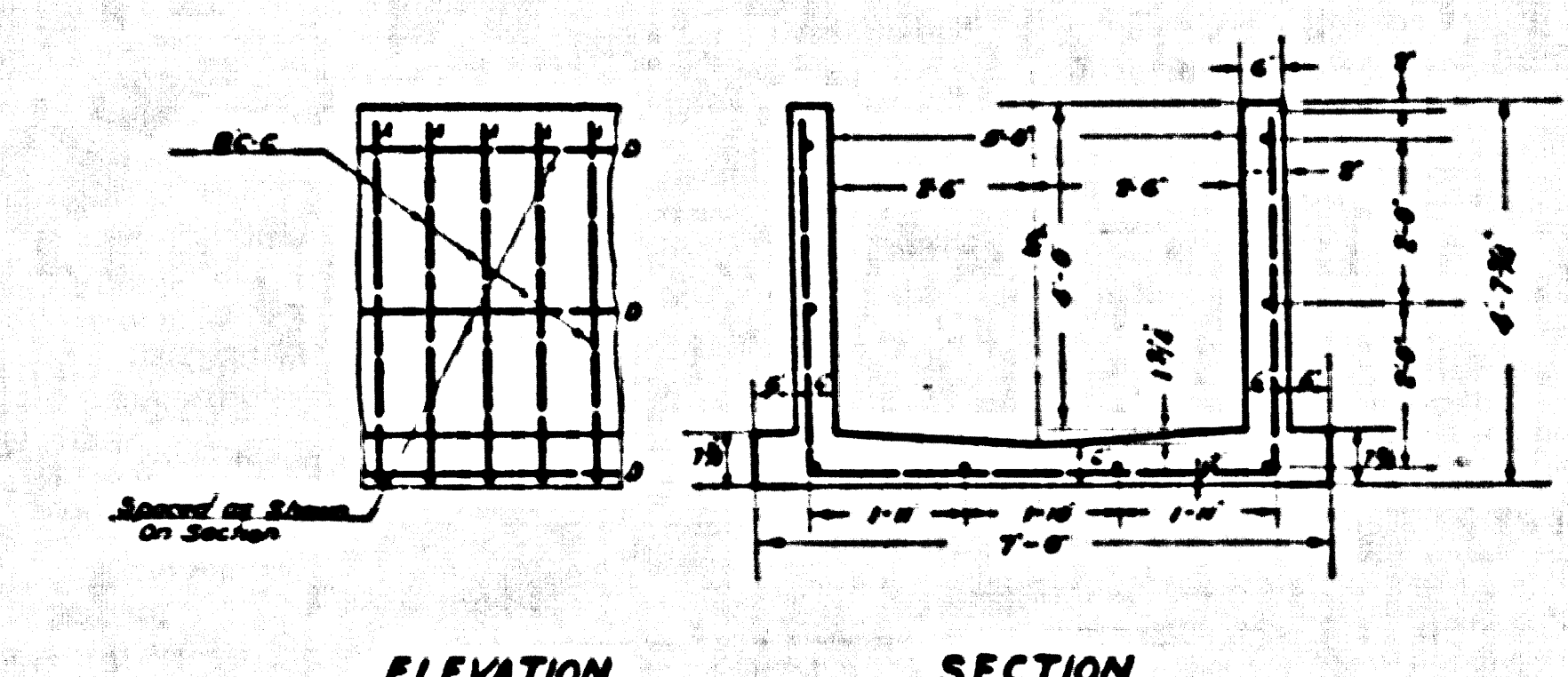
D-Bars Longitudinal Steel - 8 Bars # 8

Total Length 329.40 Feet
Class A-1 Concrete - 296.8 Cu Yds per linear foot
Reinforcing Steel - 18,762.5 Pounds per linear foot
Dimensions to Reinforcing Steel refer to Center Lines

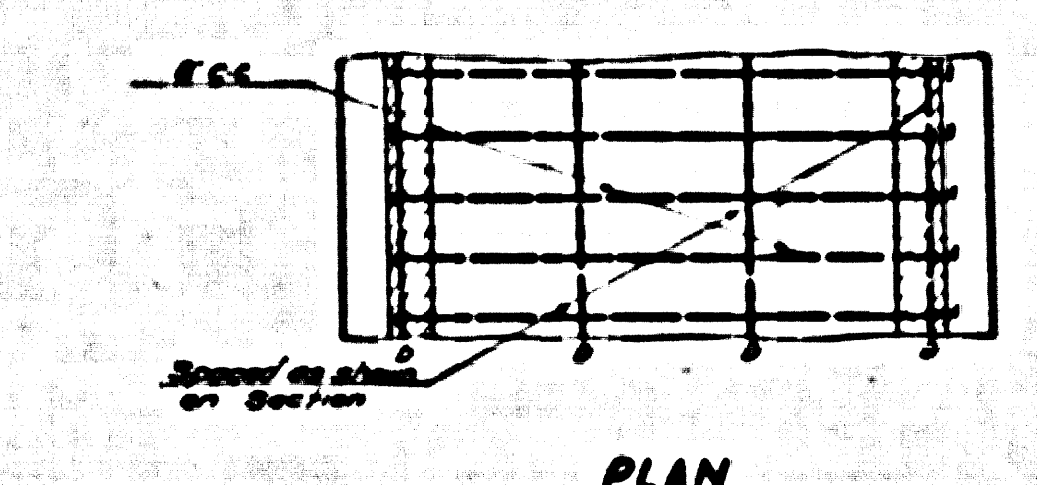
REINFORCED CONCRETE OPEN BOX 4'-9" x 4'-0"
SECTION 6

FROM STATION 43+00.00 TO STATION 48+29.40
RUSSELL STREET LINE

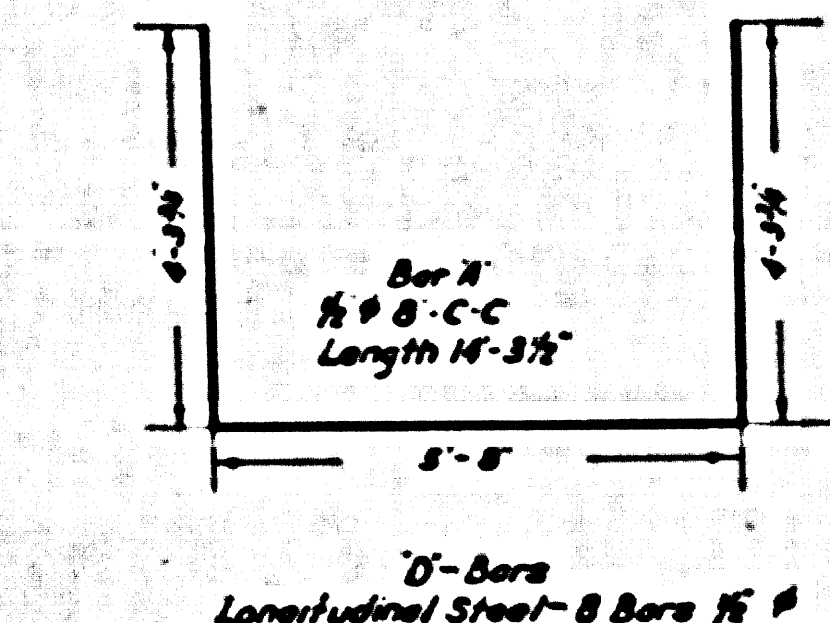
SCALE: 1/4" = 1'



ELEVATION SECTION



PLAN



D-Bars Longitudinal Steel - 8 Bars # 8

Total Length 456 Feet
Class A-1 Concrete - 302.1 Cu Yds per linear foot
Reinforcing Steel - 20,078 Pounds per linear foot
Dimensions to Reinforcing Steel refer to Center Lines

REINFORCED CONCRETE OPEN BOX 5'-0" x 4'-0"
SECTION 5

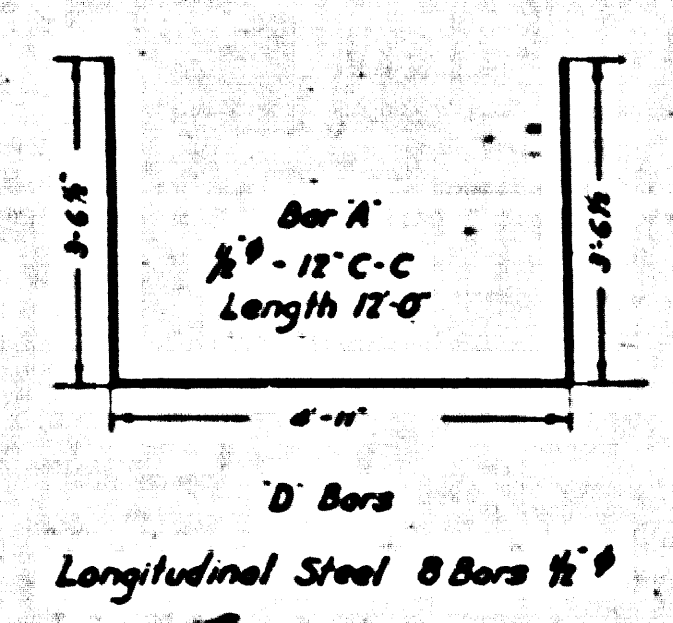
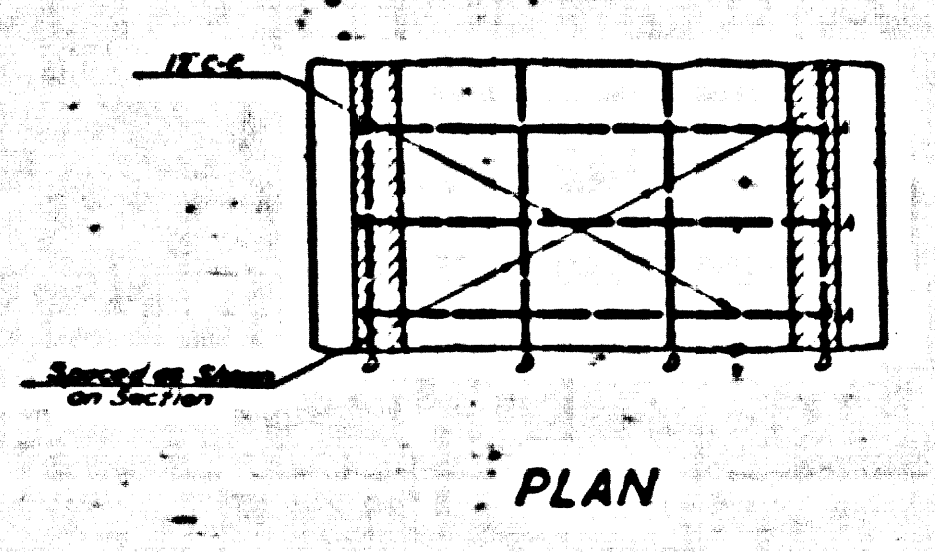
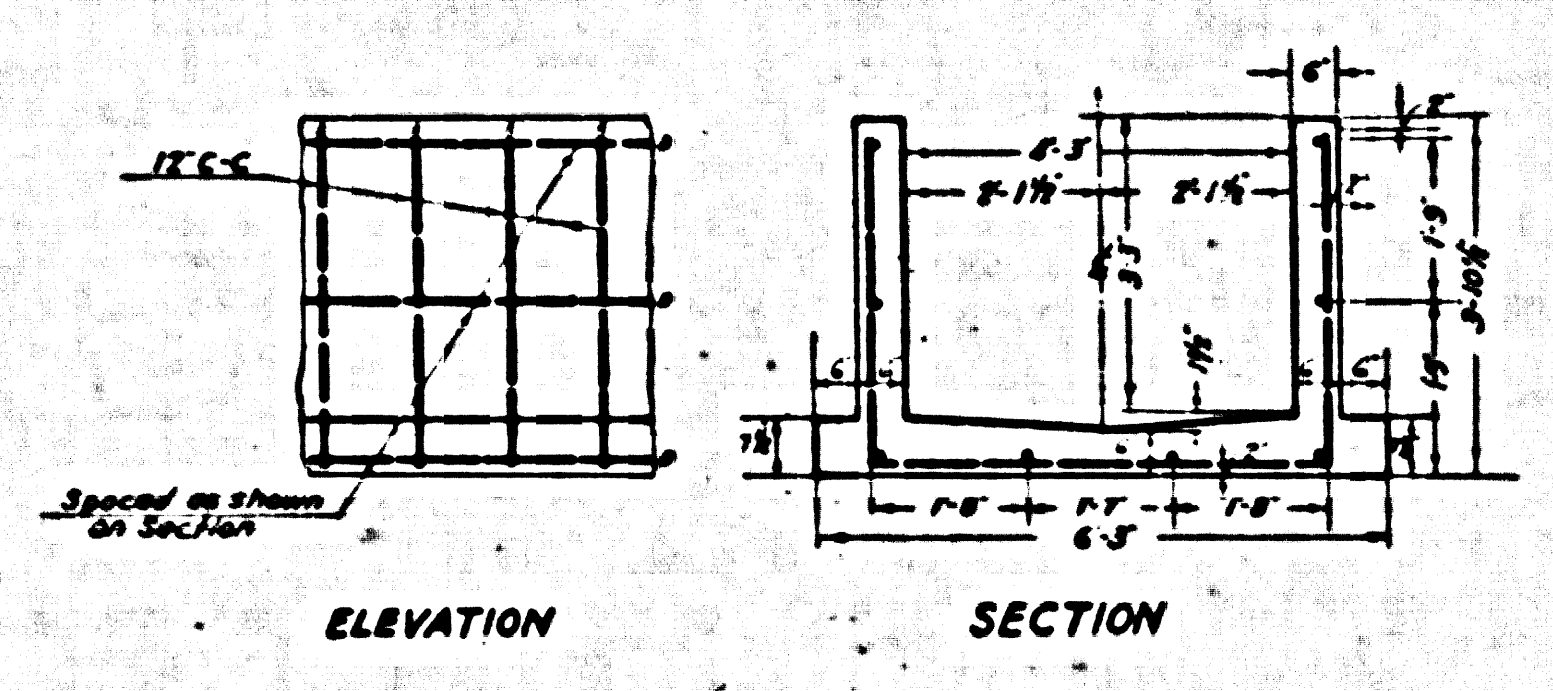
FROM STATION 38+34.00 TO STATION 42+90.00
RUSSELL STREET LINE

SCALE: 1/4" = 1'

CSB-1166-2
A3 OF A4

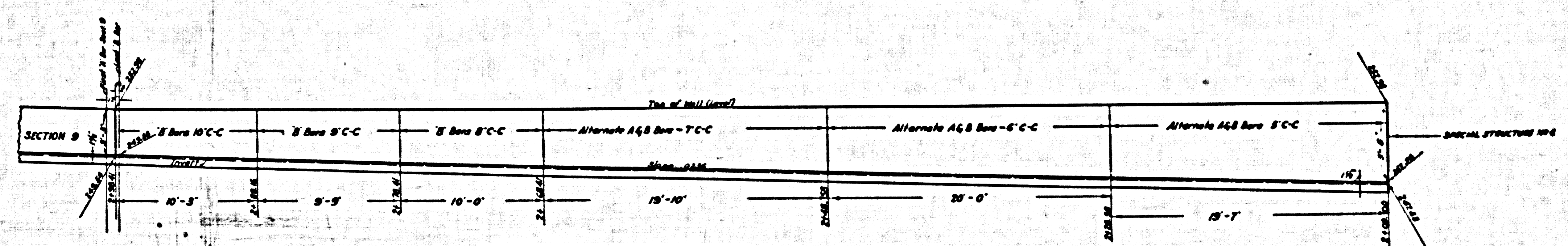
CONCRETE REINFORCING STEEL NO. B-1100

Trim Print to this Line



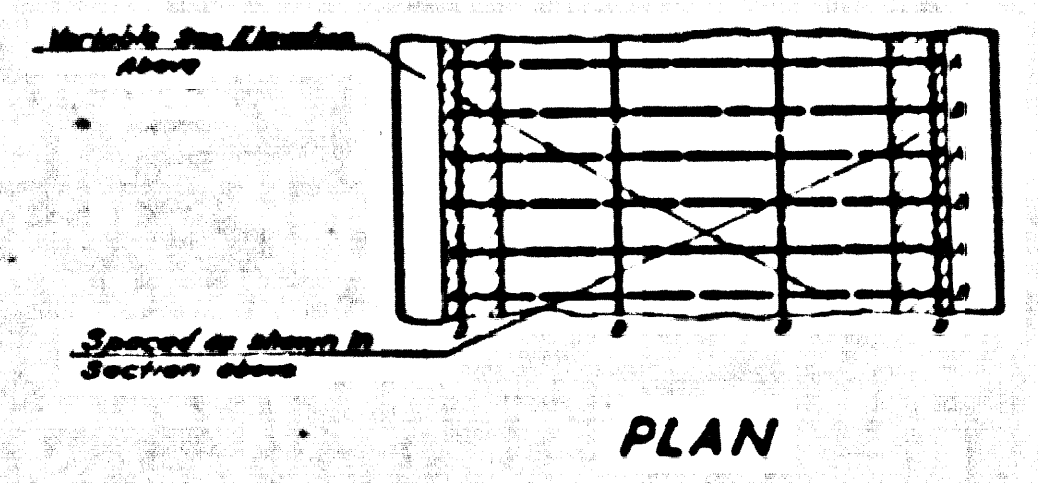
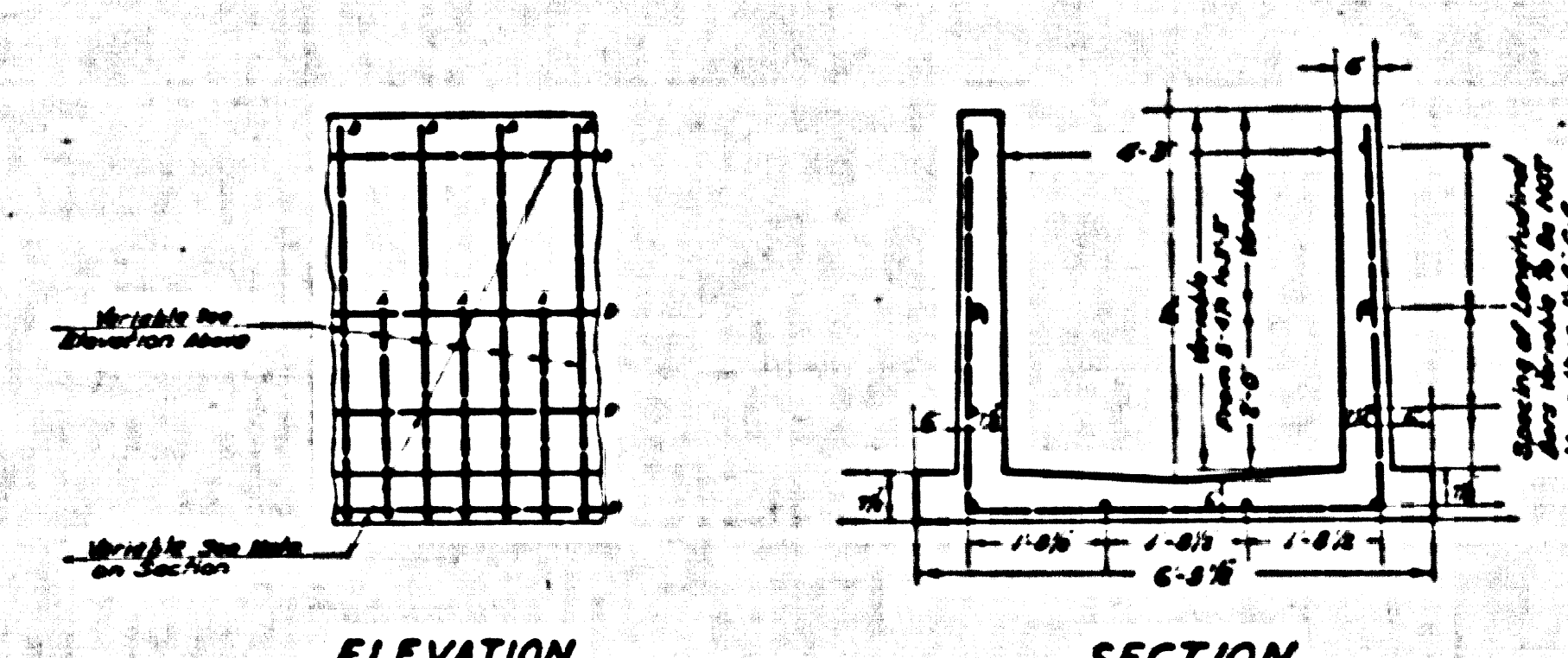
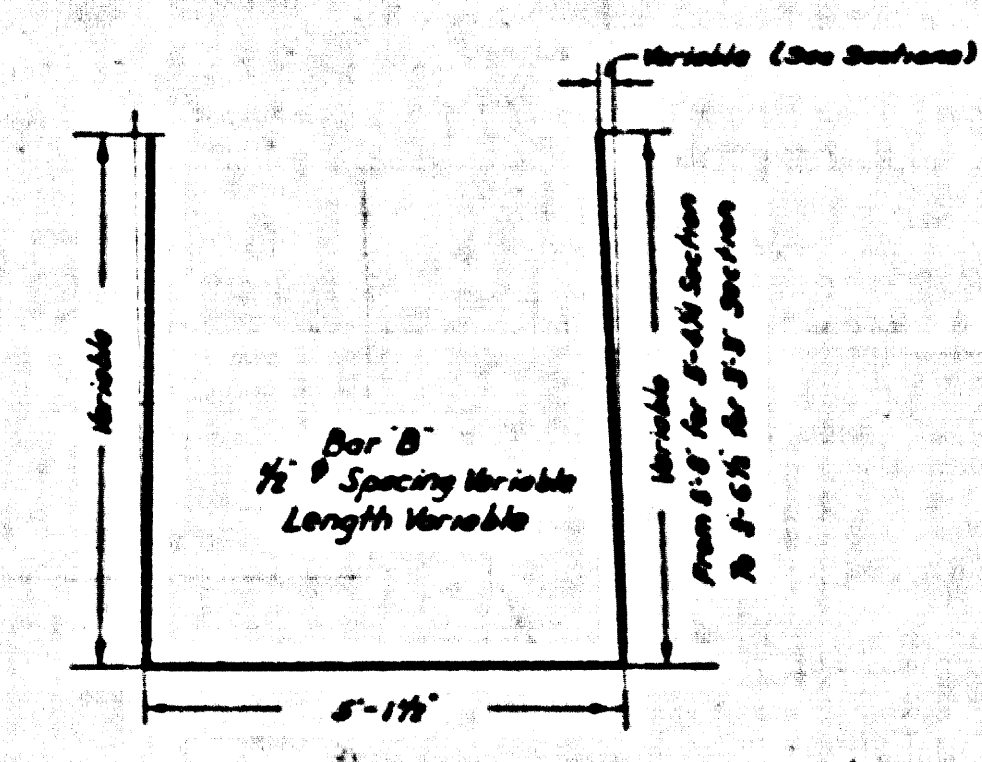
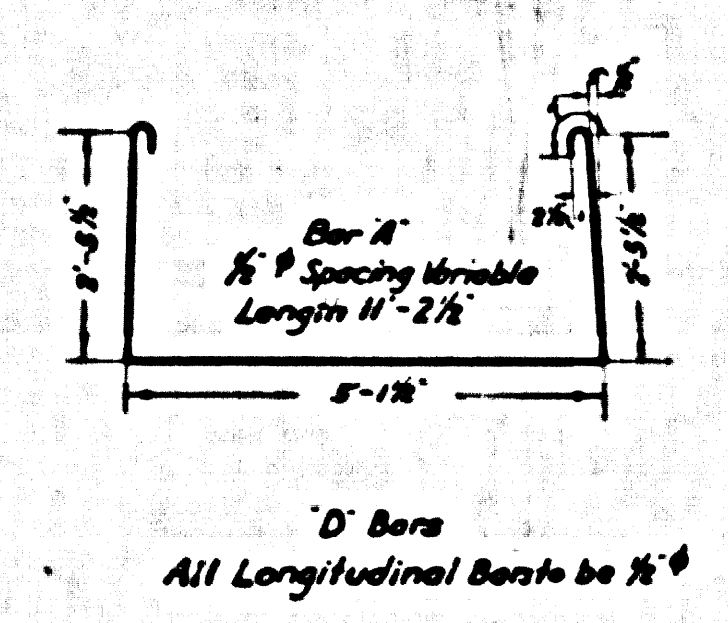
Total Length 1182.2 Feet
Class A-1 Concrete 252 Cu Yds per linear foot (Average)
Reinforcing Steel 1180 Pounds per linear foot (Average)
Dimensions to Reinforcing Steel Refer to Center Lines

REINFORCED CONCRETE OPEN BOX 4'-3" x 3'-3"
SECTION 9
 FROM STATION 2+98.41 TO STATION 10+16.63
 SANTA GERTRUDES AVE LATERAL
 SCALE: 1/2" = 1'



D Bars
 All longitudinal bars to be 1/2"
 Longitudinal bars in front to be spaced 1'-0" C-C
 Longitudinal bars in sidewalk to be spaced
 Not more than 1'-6" C-C

NOTE:
 All dimensions given in TYPICAL SECTION
 To be the same throughout SECTION 8
 Variable dimensions shown on TYPICAL
 SECTION are shown on ELEVATION above



Total Length 884.1 Feet
 Class A-1 Concrete 315 Cu Yds per linear foot (Average)
 Reinforcing Steel 2341.9 Pounds per linear foot (Average)
 Dimensions to Reinforcing Steel Refer to Center Lines

REINFORCED CONCRETE OPEN BOX TYPICAL SECTION
SECTION 8
 FROM STATION 2+09.00 TO STATION 2+98.41
 SANTA GERTRUDES AVENUE LATERAL
 SCALE: 1/4" = 1'

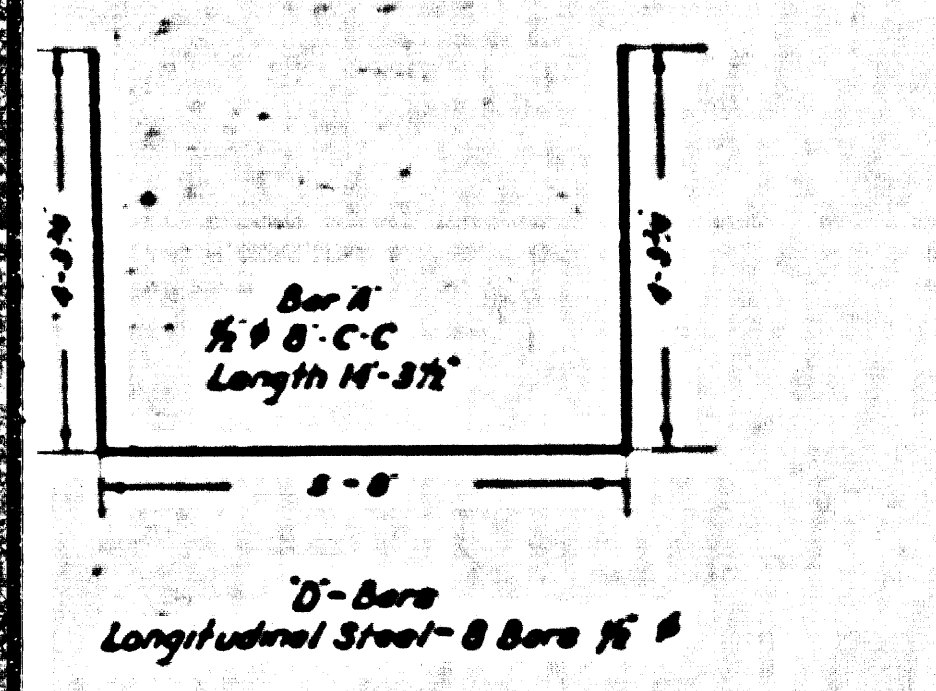
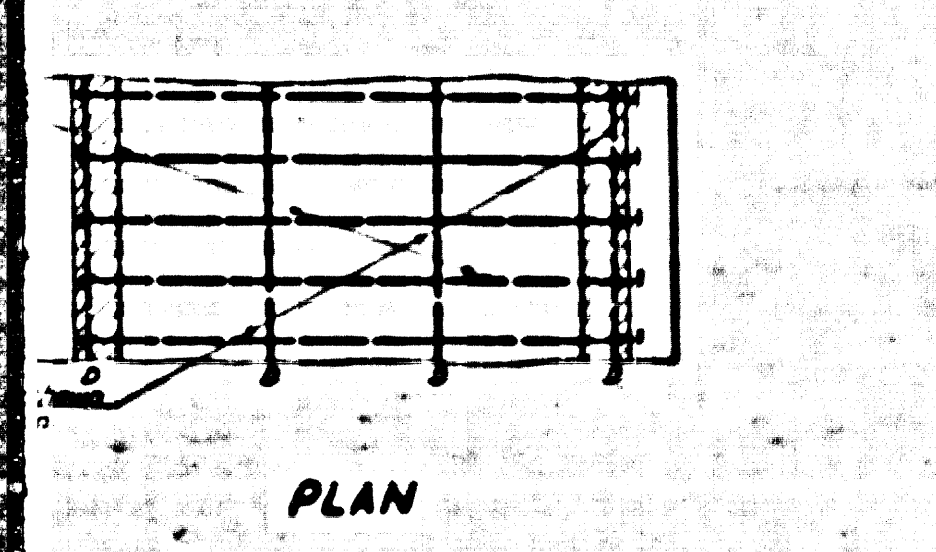
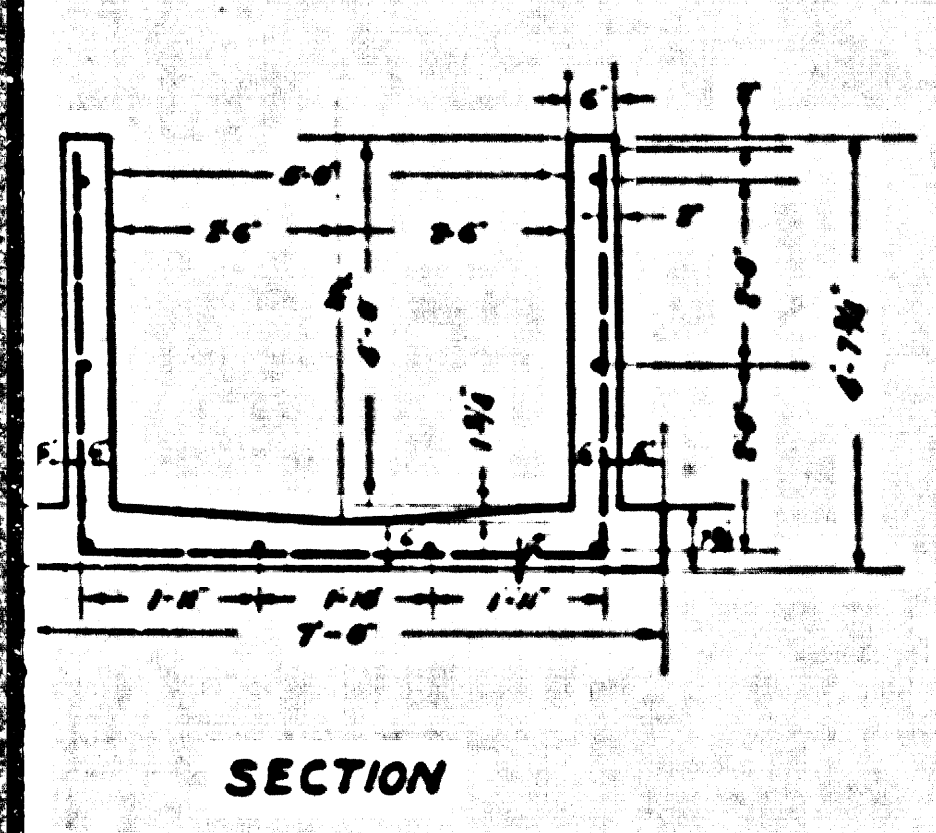
CSB-1166-2
 A40FA4

Trim Print to this Line

SHEET NO. 5 OF 3 SHEETS

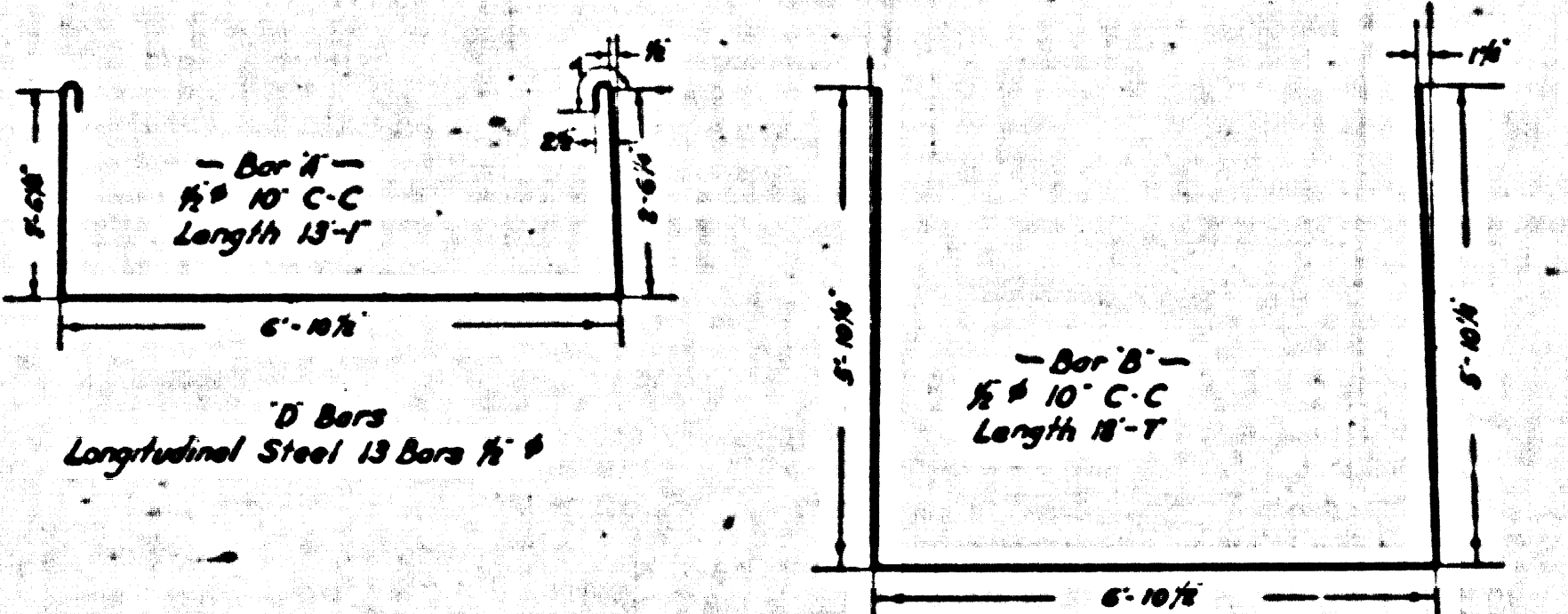
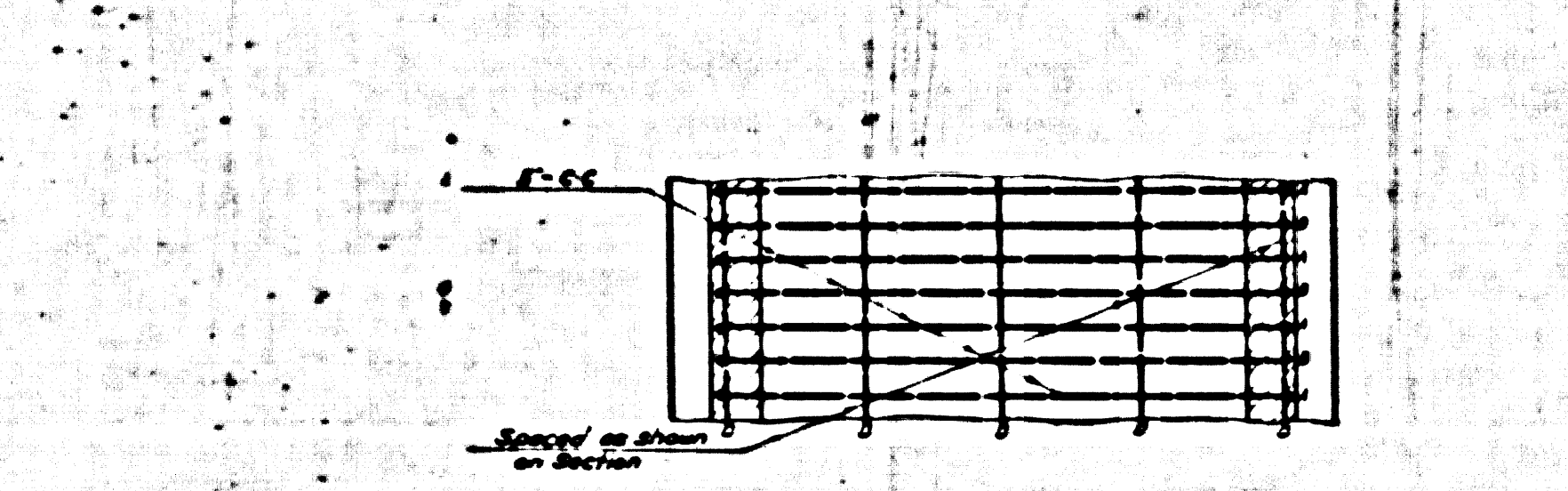
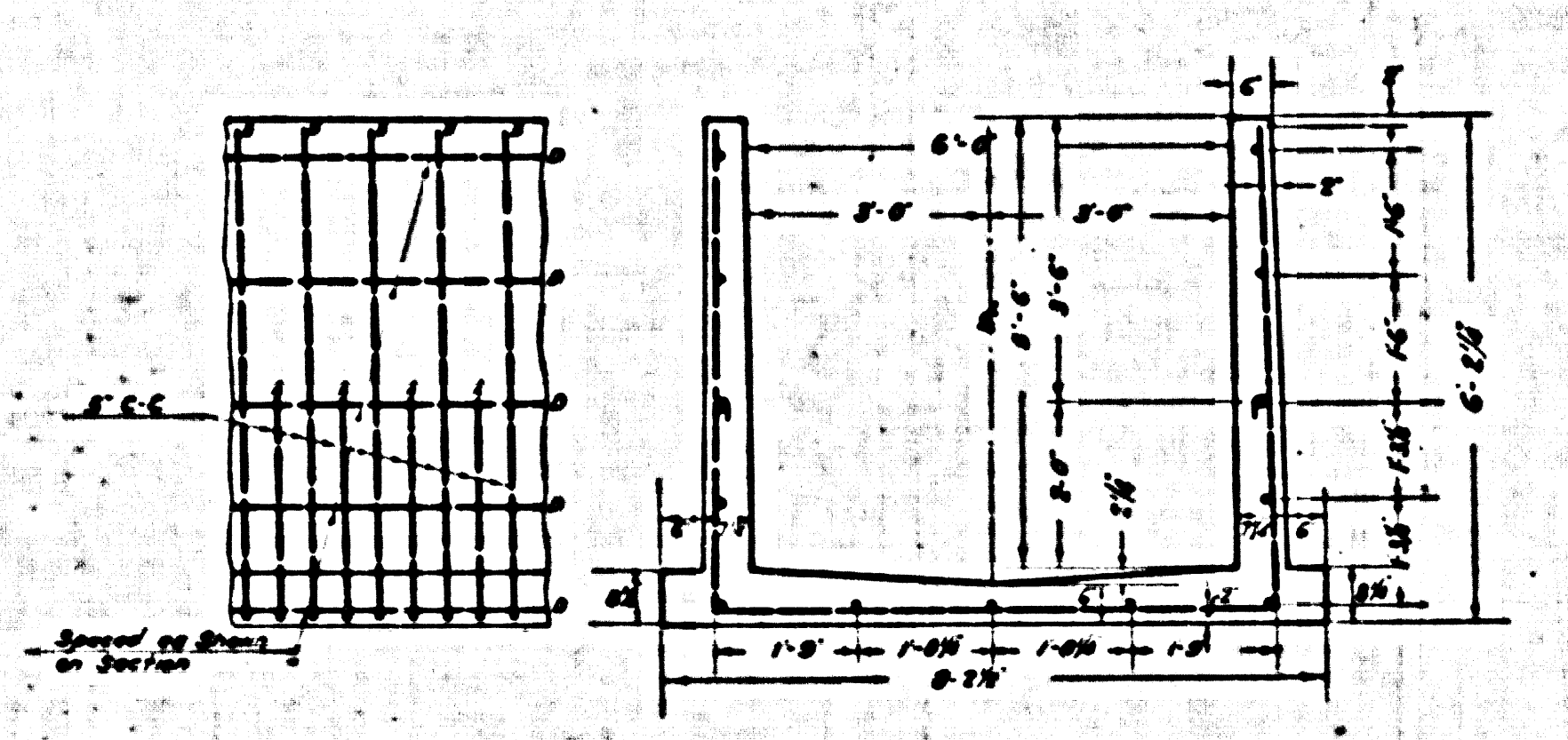
To: Co. Ac. Dir.

REINFORCED
 FROM STA
 RUS



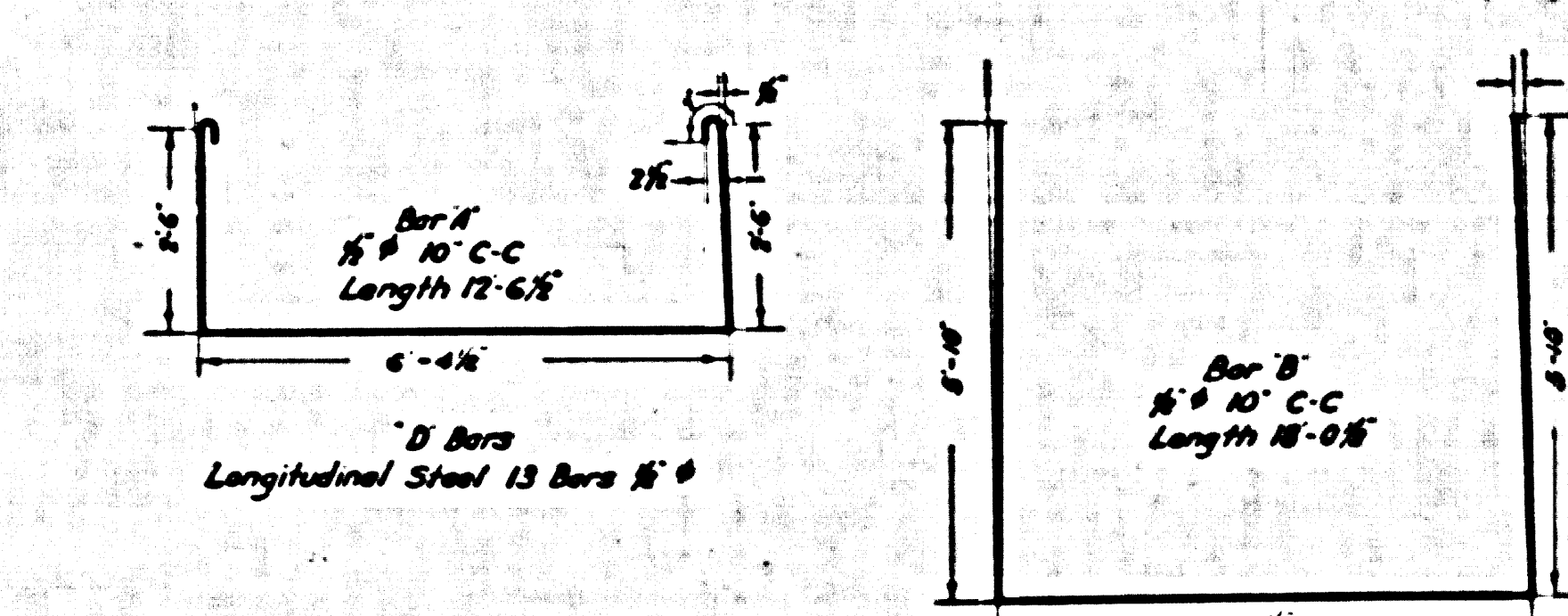
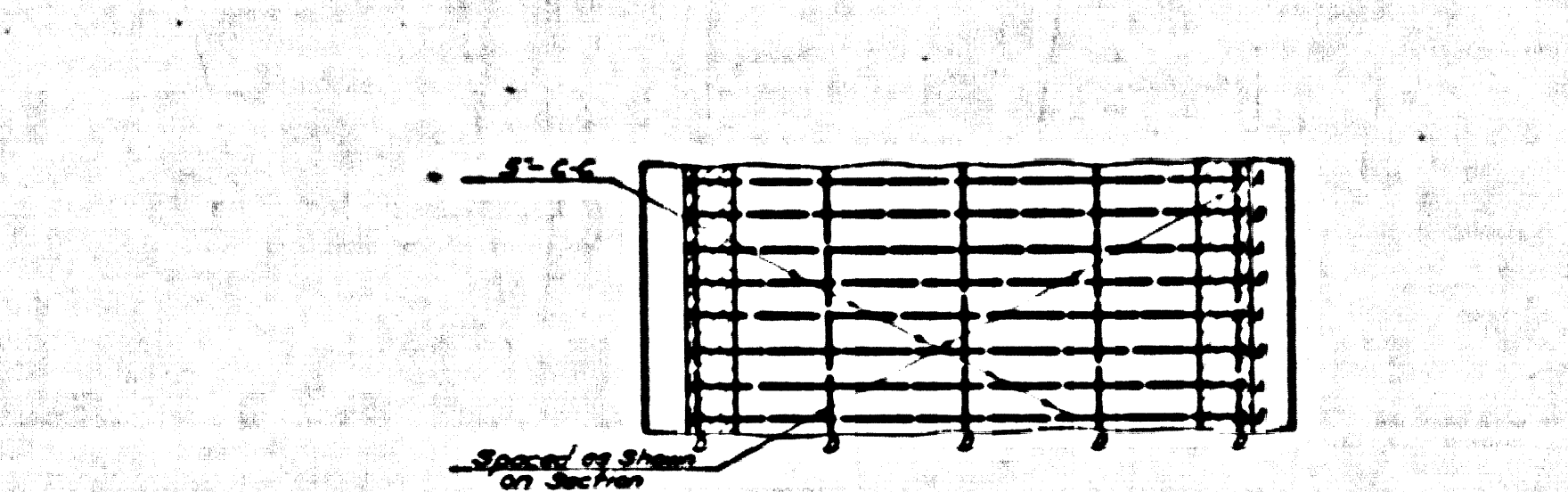
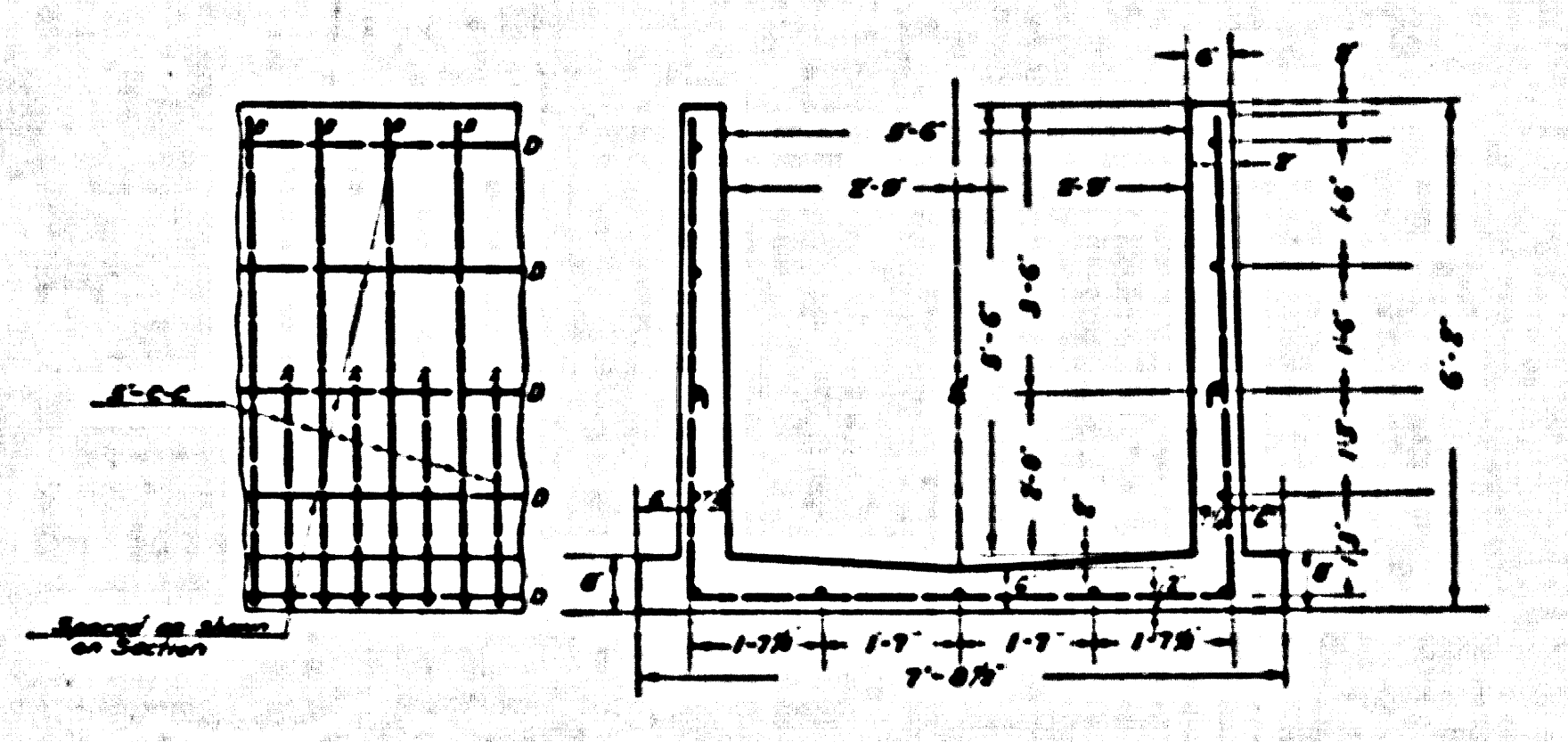
Total Length 486 Feet
 Class A-1 Concrete 3071 Cu Yds per lineal foot
 Reinforcing Steel 20476 Pounds per lineal foot
 Dimensions to Reinforcing Steel refer to Center Lines

REINFORCED CONCRETE OPEN BOX 5'-0" x 4'-0"
SECTION 5
 FROM STATION 38+34.00 TO STATION 42+90.00
 RUSSELL STREET LINE
 SCALE: 1/2"=1'



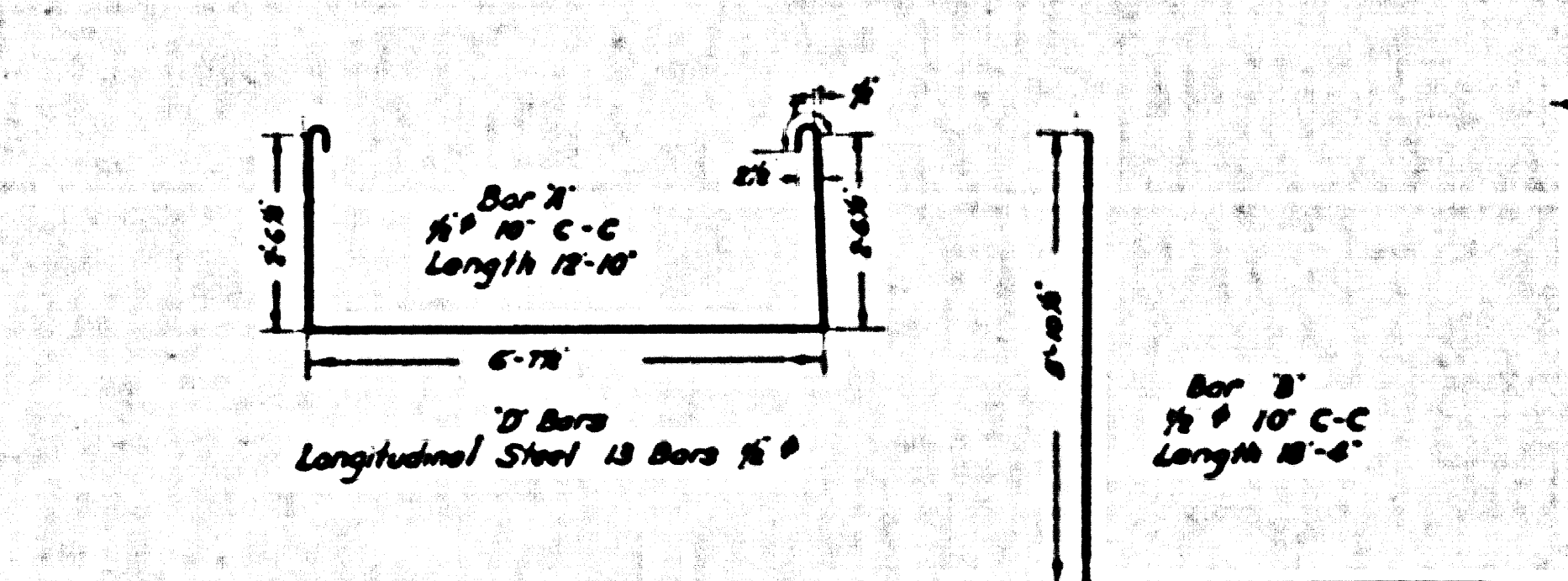
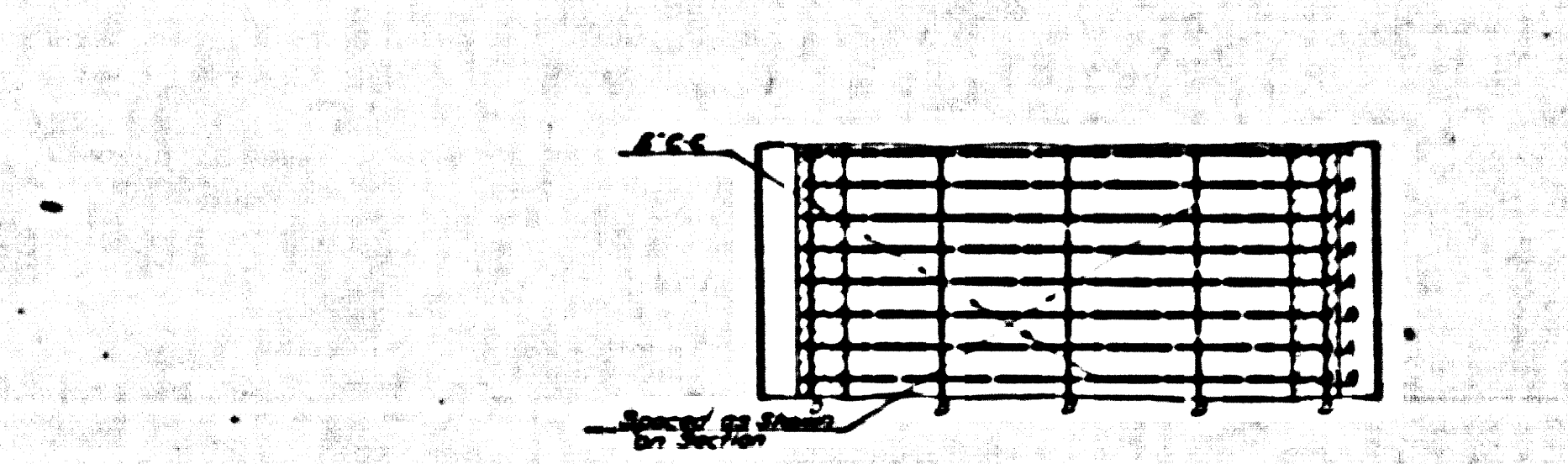
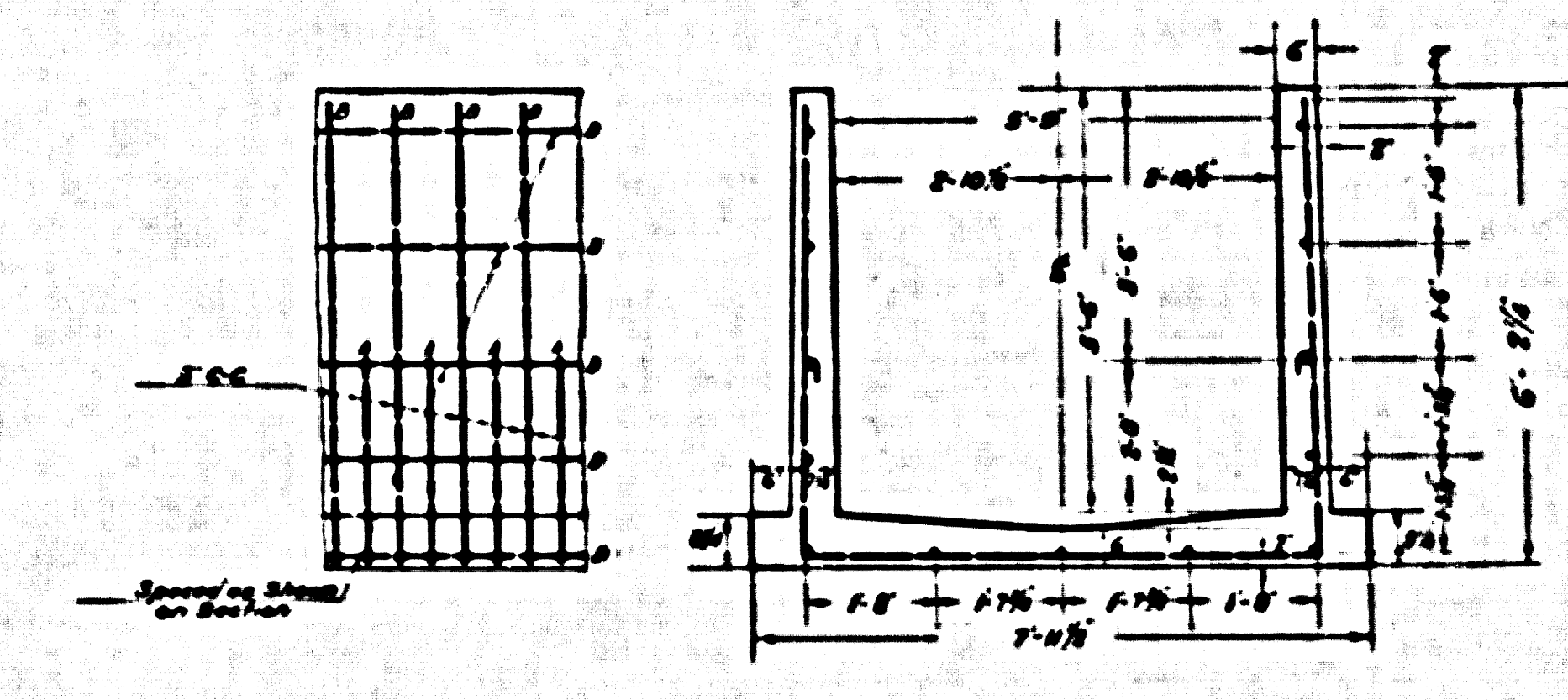
Total Length 581 Feet
 Class A-1 Concrete 4181 Cu Yds per lineal foot
 Reinforcing Steel 34600 Pounds per lineal foot
 Dimensions to Reinforcing Steel refer to Center Lines

REINFORCED CONCRETE OPEN BOX 6'-0" x 5'-6"
SECTION 4
 FROM STATION 31+55.00 TO STATION 32+39.00
 FROM STATION 32+39.00 TO STATION 37+56.00
 RUSSELL STREET LINE
 SCALE: 1/2"=1'



Total Length 6235 Feet
 Class 2-1 Concrete 3588 Cu Yds per lineal foot
 Reinforcing Steel 33760 Pounds per lineal foot
 Dimensions to Reinforcing Steel refer to Center Lines

REINFORCED CONCRETE OPEN BOX 5'-6" x 5'-6"
SECTION 3
 FROM STATION 25+15.00 TO STATION 31+44.39
 RUSSELL STREET LINE
 SCALE: 1/2"=1'



Total Length 1349 Feet
 Class A-1 Concrete 4076 Cu Yds per lineal foot
 Reinforcing Steel 34270 Pounds per lineal foot
 Dimensions to Reinforcing Steel refer to Center Lines

REINFORCED CONCRETE OPEN BOX 5'-9" x 5'-9"
SECTION 2
 FROM STATION 19+00.00 TO STATION 24+96.00
 FROM STATION 11+17.00 TO STATION 16+00.00
 RUSSELL STREET LINE
 SCALE: 1/2"=1'

CSB-1166-2
 A 2 OF A 4