

KEY MAP  
SHOWING DRAINS AND RESURFACING

### GLEN AVENUE DRAINAGE SYSTEM

OF THE COUNTY OF LOS ANGELES, CALIFORNIA  
 PLAN AND PROFILE OF  
 PALMER AVE. BRANCH - ACACIA ST. BRANCH  
 SCHOOL ST. BRANCH - PALM ST. STUB  
 ALMOND ST. STUB - LAUREL ST. STUB  
 MYRRH ST. STUB - CYPRESS ST. STUB  
 OLIVE ST. BRANCH - CALDWELL ST. STUB

SHEET 13 OF 28 SHEETS

MADE 11/15/33 NOVEMBER 1933

ALFRED JONES COUNTY SURVEYOR  
 RECOMMENDED [Signature] APPROVED [Signature]

REFERENCE	DESIGNED	DATE
F. B. 496	L. Langacre	MAR 1932
L. B. 680	P. I. Huntstock	SEPT 1933
	CHECKED E. E. Mitchel	MAR 1934

**NOTES:**

Elevations are in feet above U.S.G.S. or mean Sea Level Datum.

Stations of inlets and junctions refer to the intersections of the center lines of the inlets with the center line of the main drain.

Elevations of all inlets except catch basin inlets into box sections refer to the flow lines of the inlets produced on their gradients to the vertical plane thru the center line of the main drain. Elevations of catch basin inlets into box sections refer to the intersections of the flow lines of these inlets with the inside wall of the box sections.

For details of all standard structures see Standard Plans.

All pipe not otherwise specified shall be plain cement pipe.

All stubs to be one length of pipe with ends sealed with 2" red wood planking, unless otherwise specified.

Catch basins shall be built with a curb face of 10' or more which shall include a minimum depression at opening of 4' below gutter grade, unless otherwise specified.

Sanitary sewers crossing storm drains, shown in profile with less than 1 1/2 feet clearance, are to be encased as per 5-6 for a length equal to the width of conduit trench. In addition if less than 1 1/2 ft clearance sewers must be of cast iron pipe and encased as noted above.

Corrected as Constructed August 1941 A. J. Hinkard

CSB-1171-13

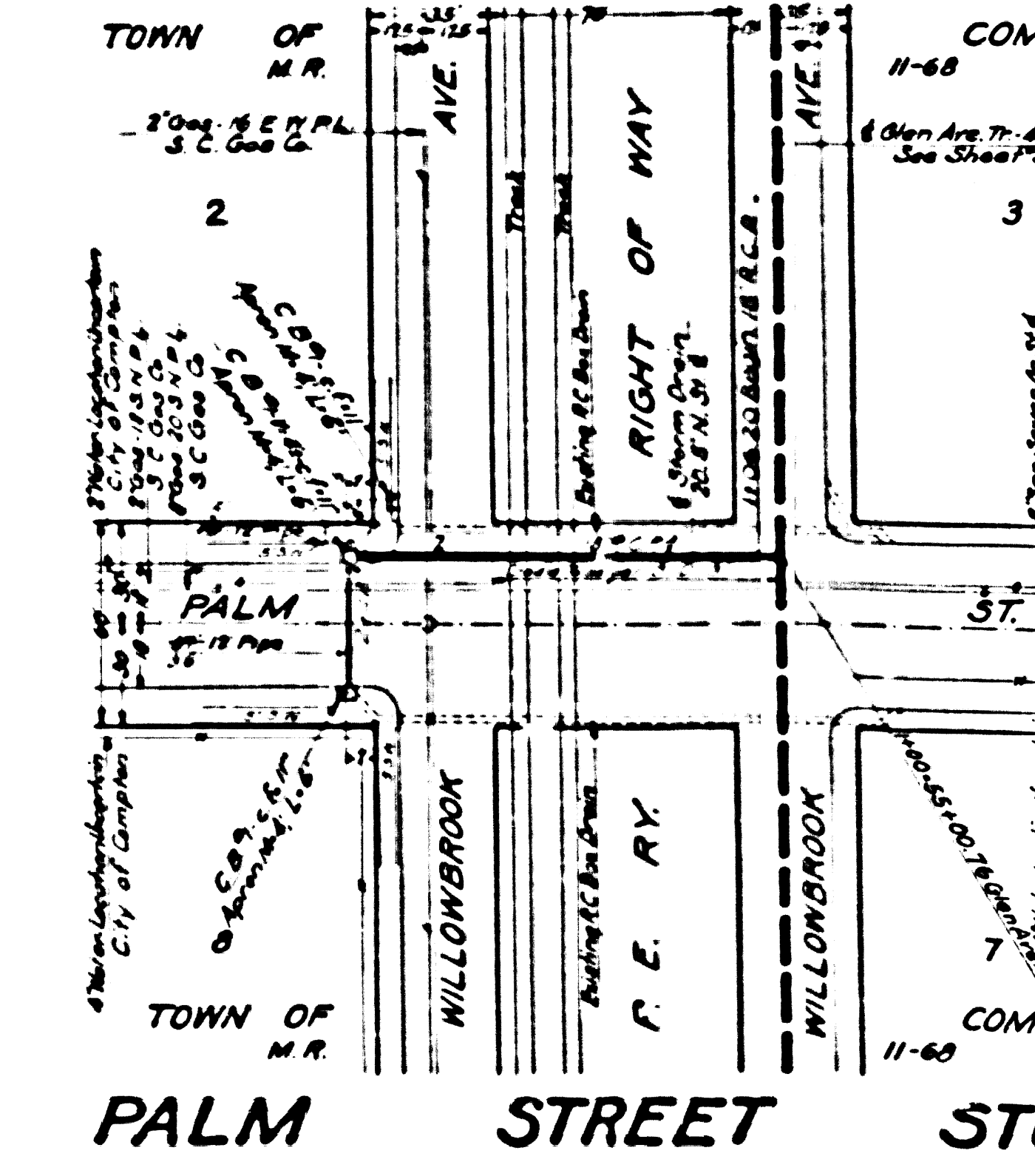
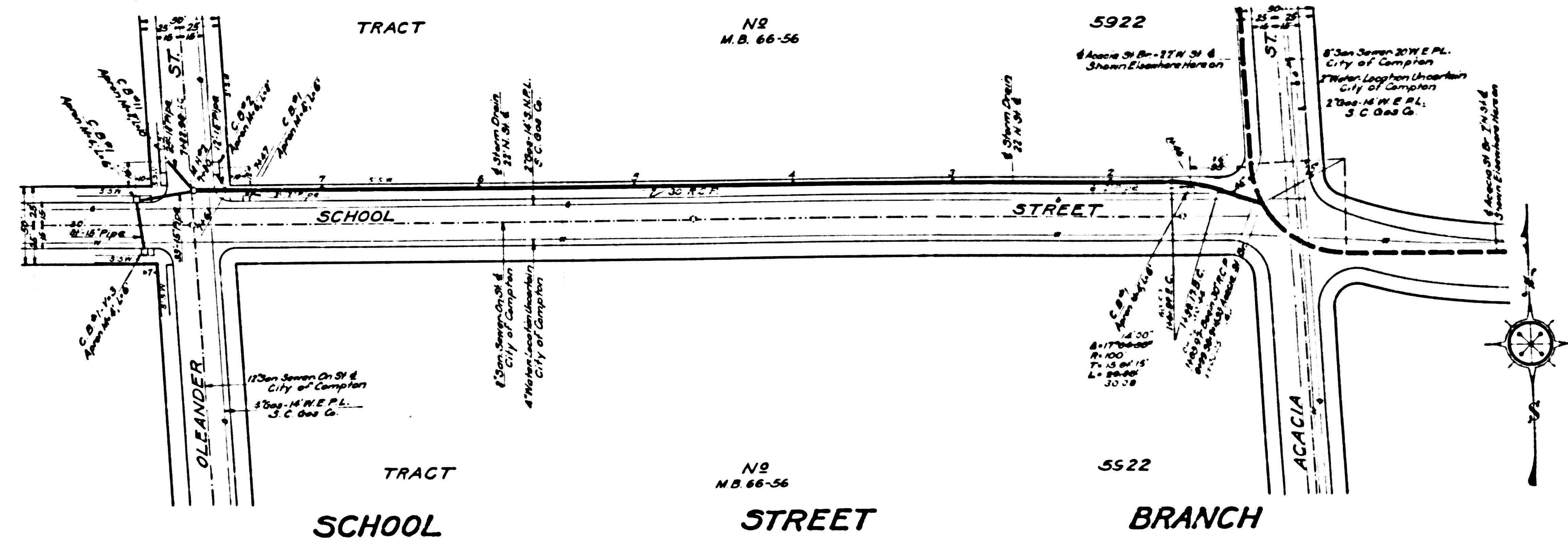
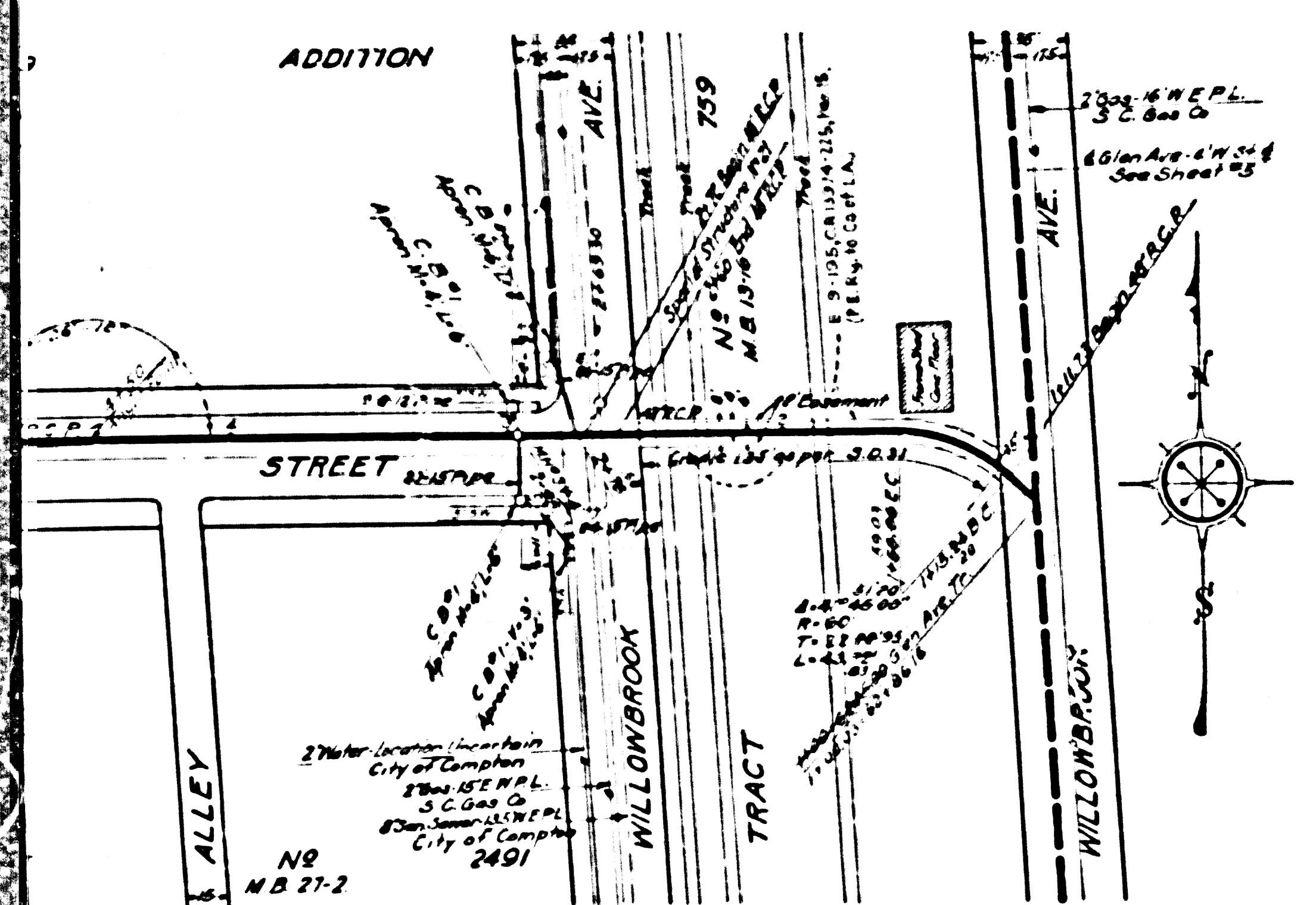
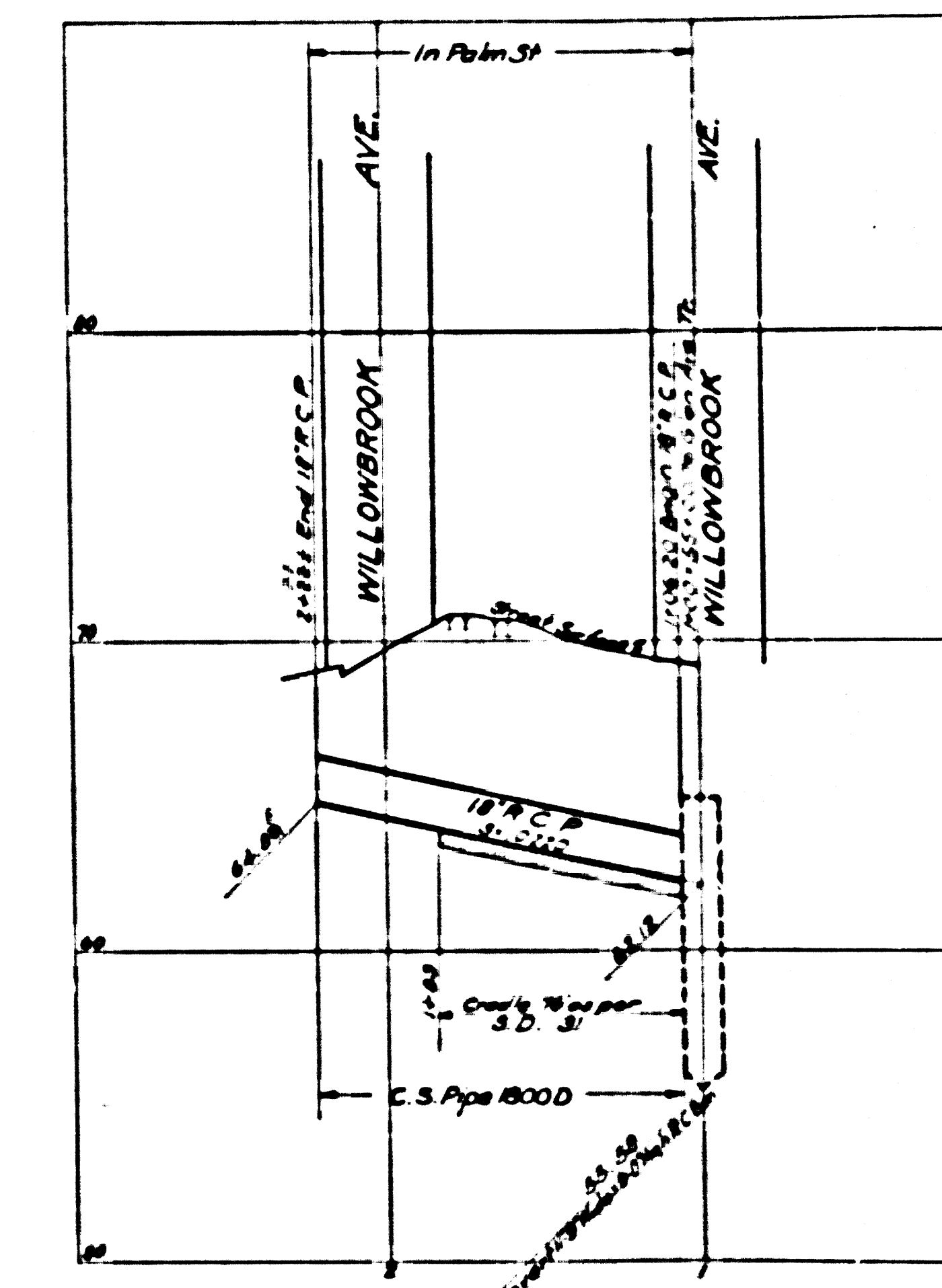
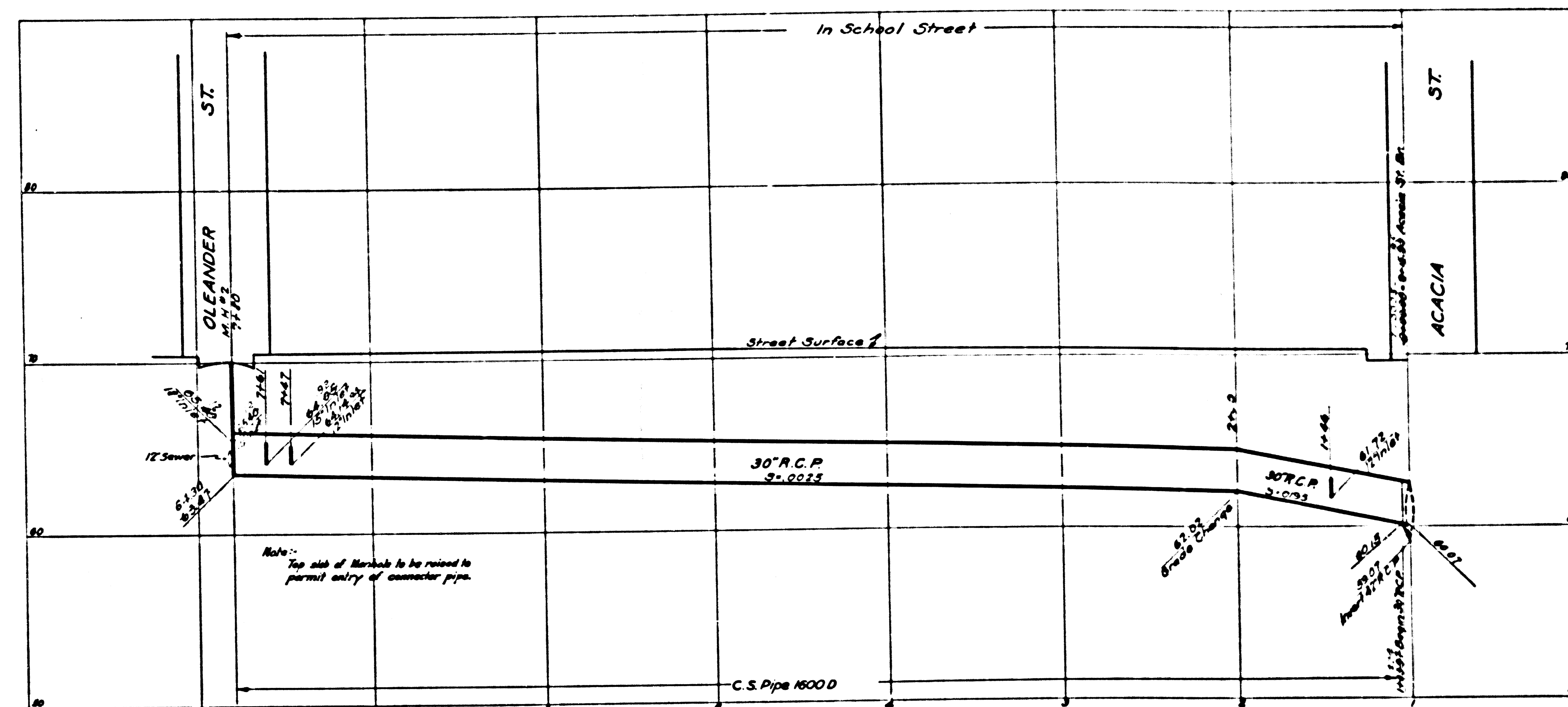
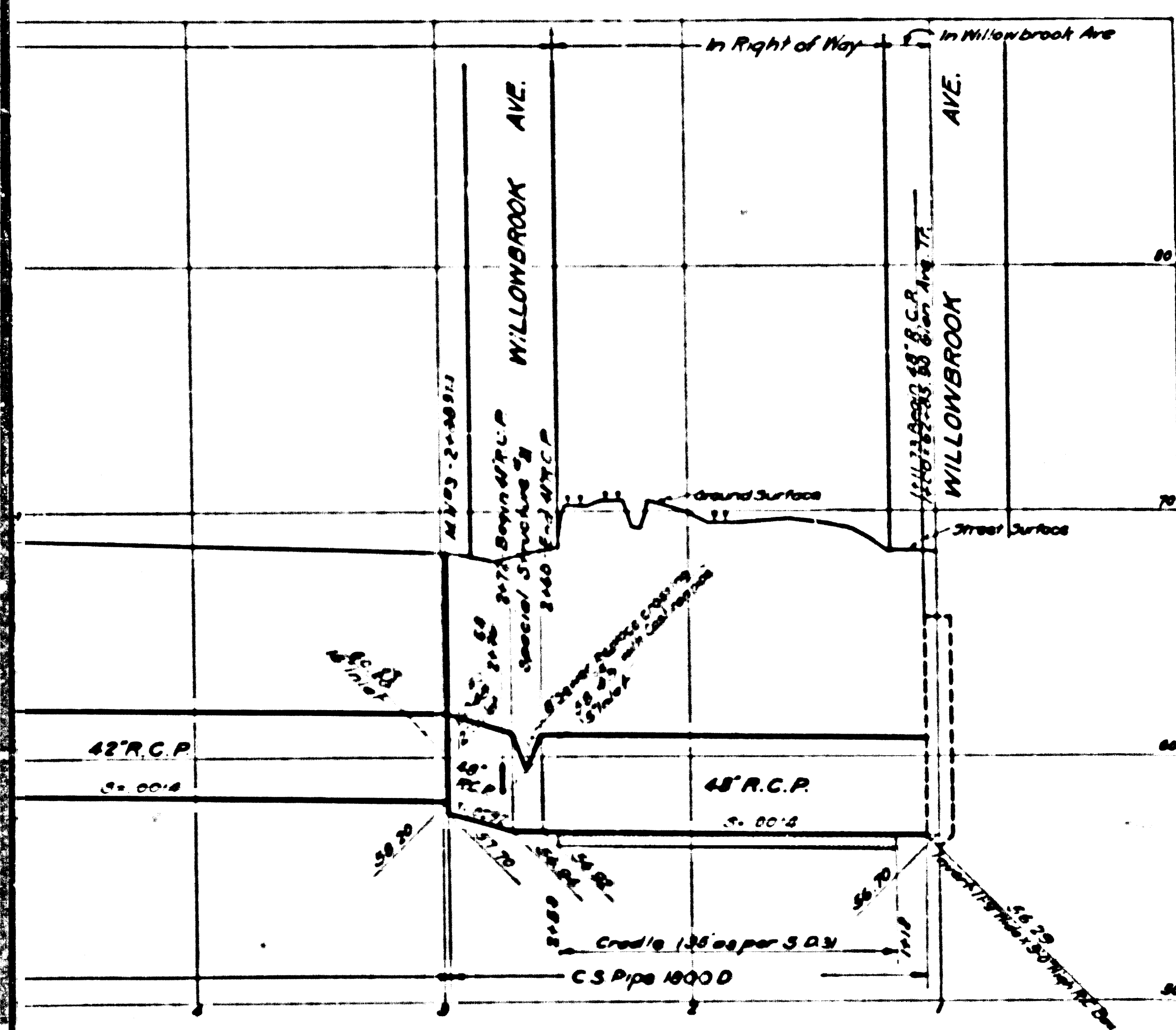
AI OF A8

13

SHEET NO. 13 OF 28 SHEETS

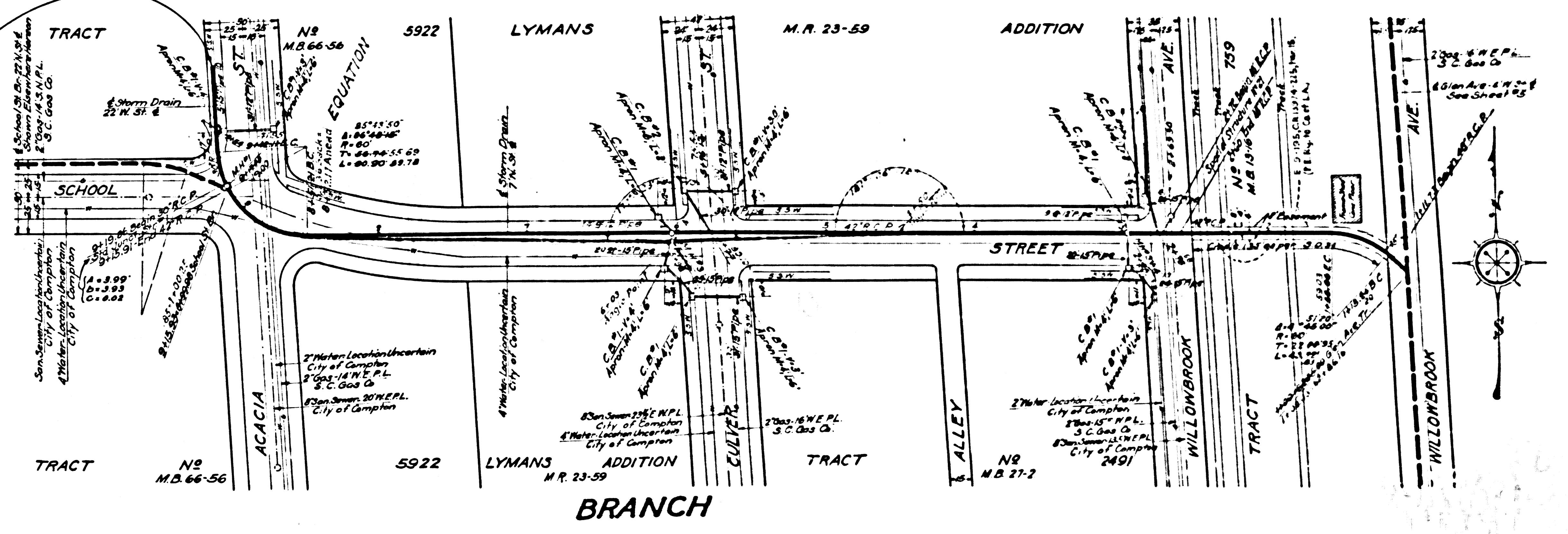
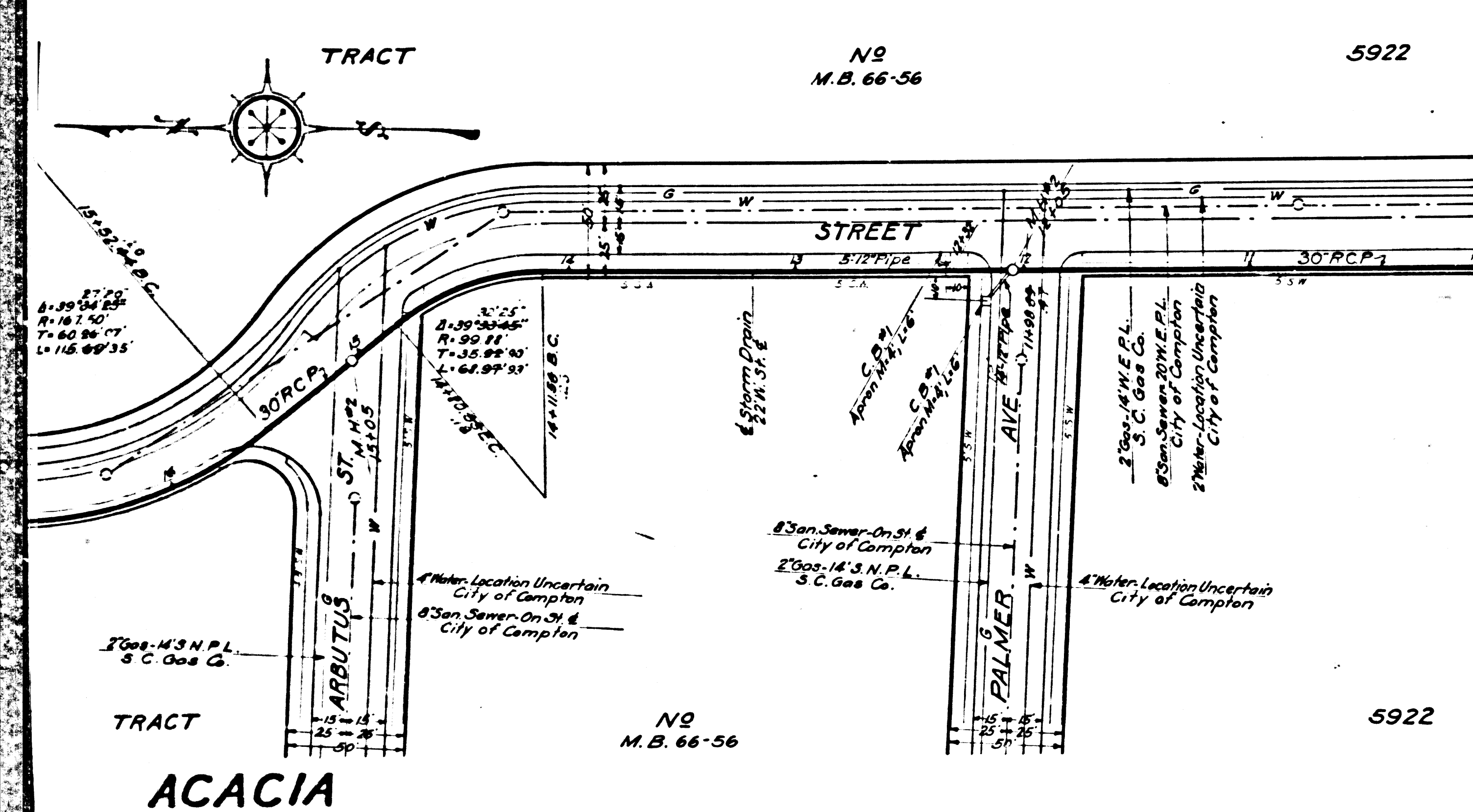
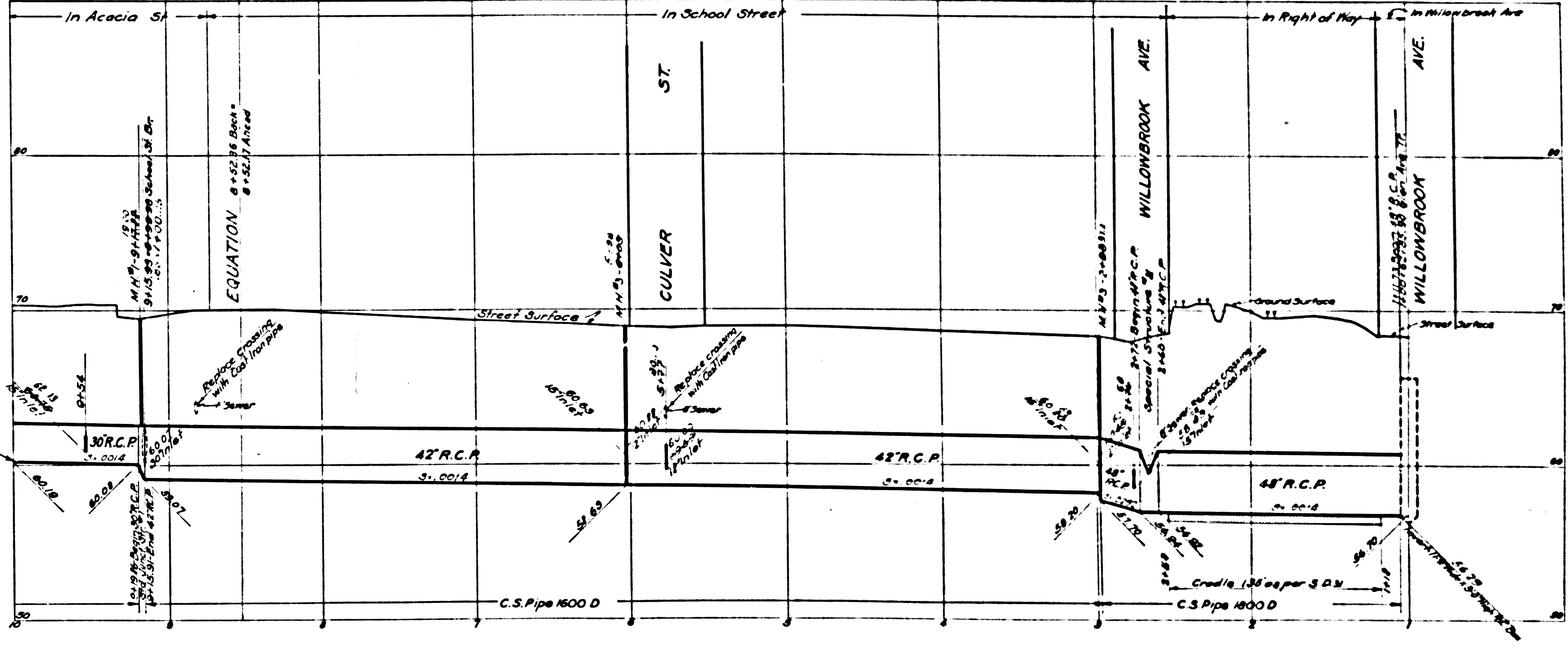
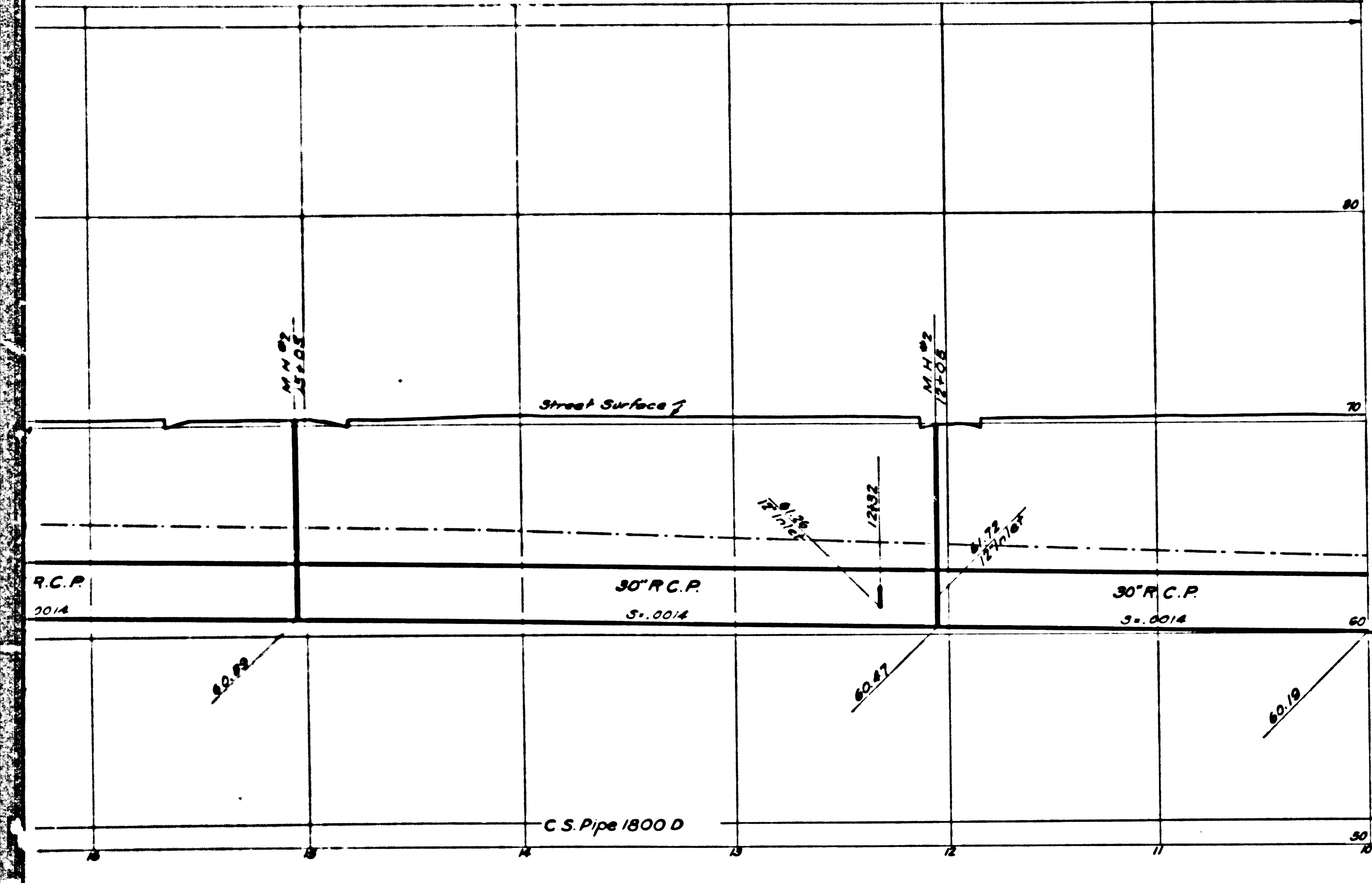
COUNTY ENGINEER





CSB-1171-13  
A5 OF A8





Identical

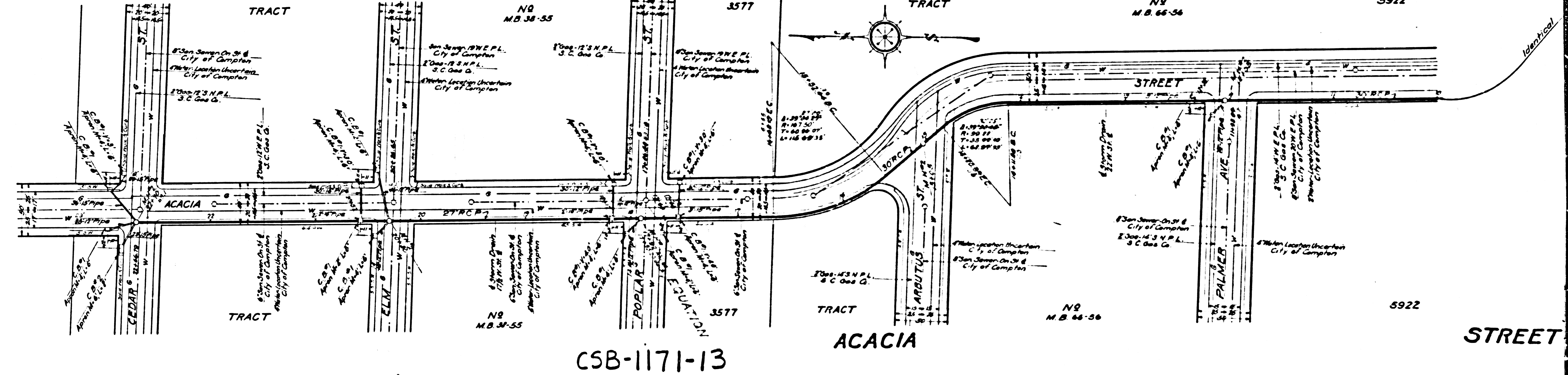
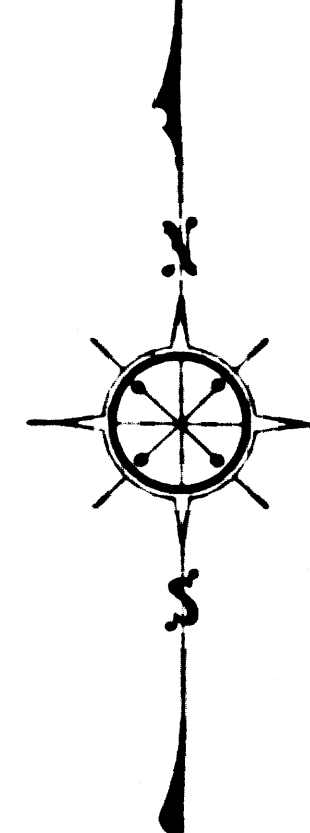
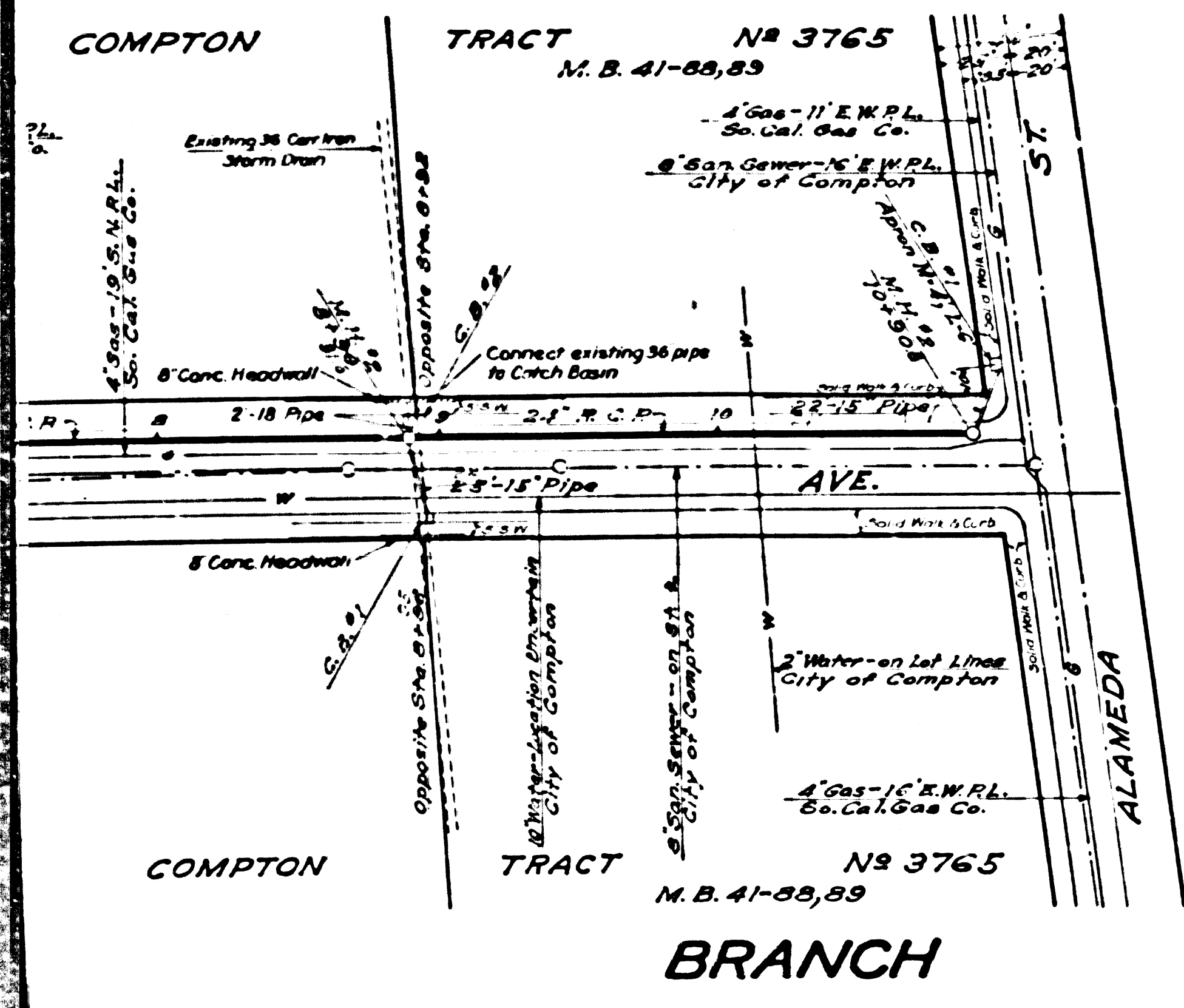
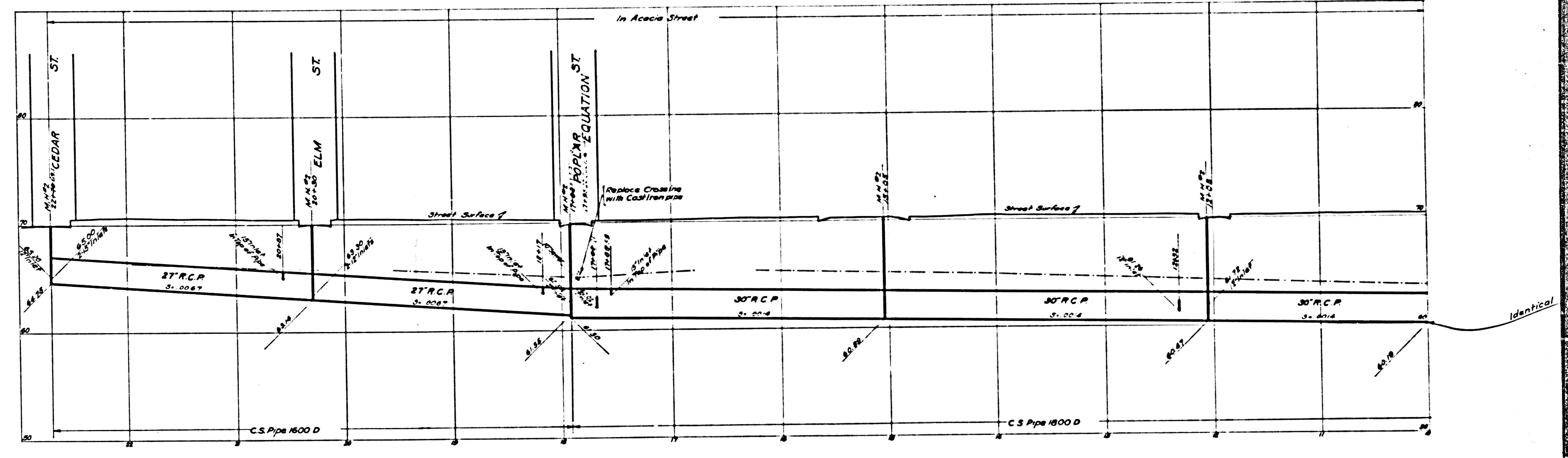
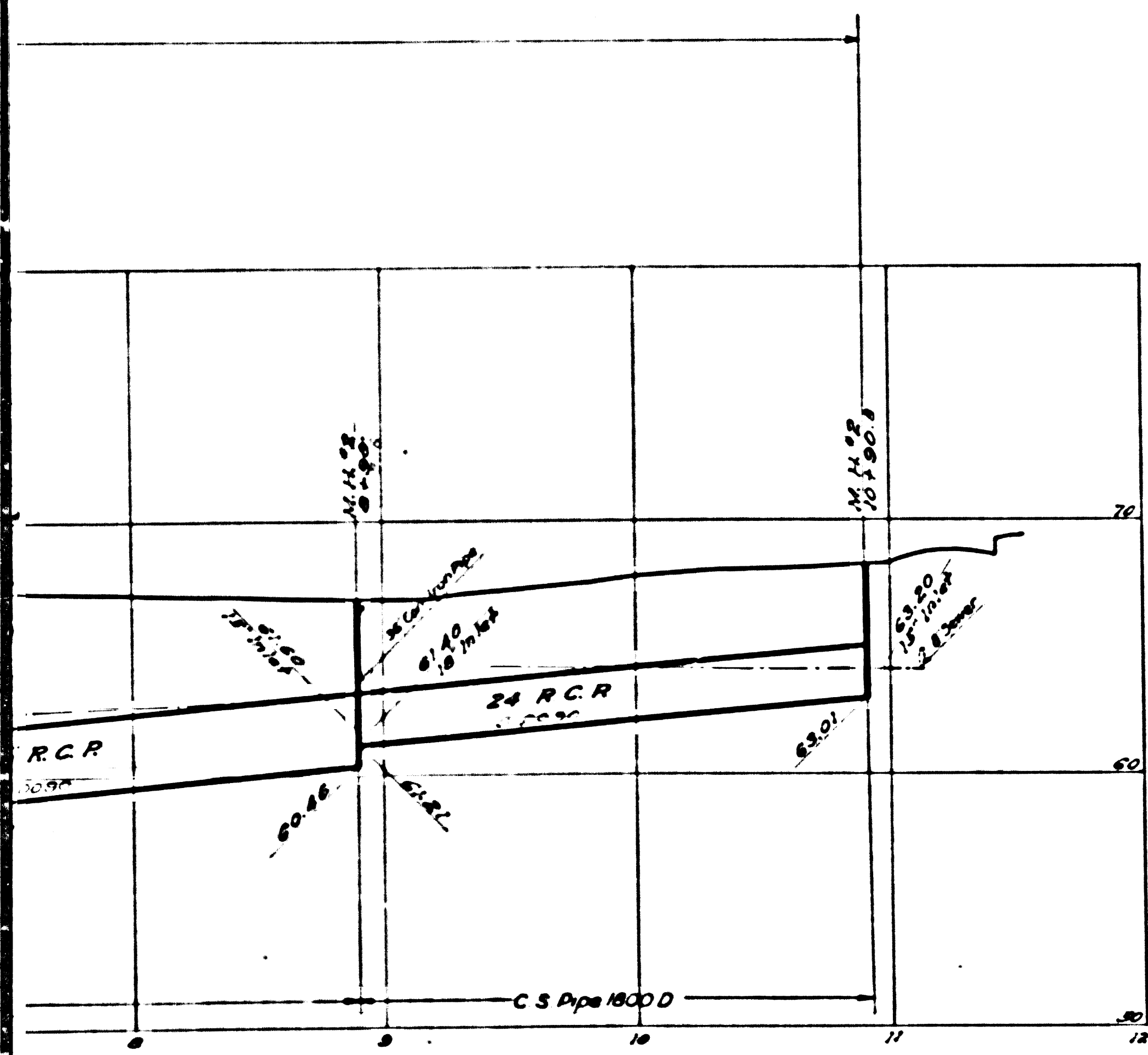
ACACIA

STREET

BRANCH

CSB-1171-13  
A6 OF A8



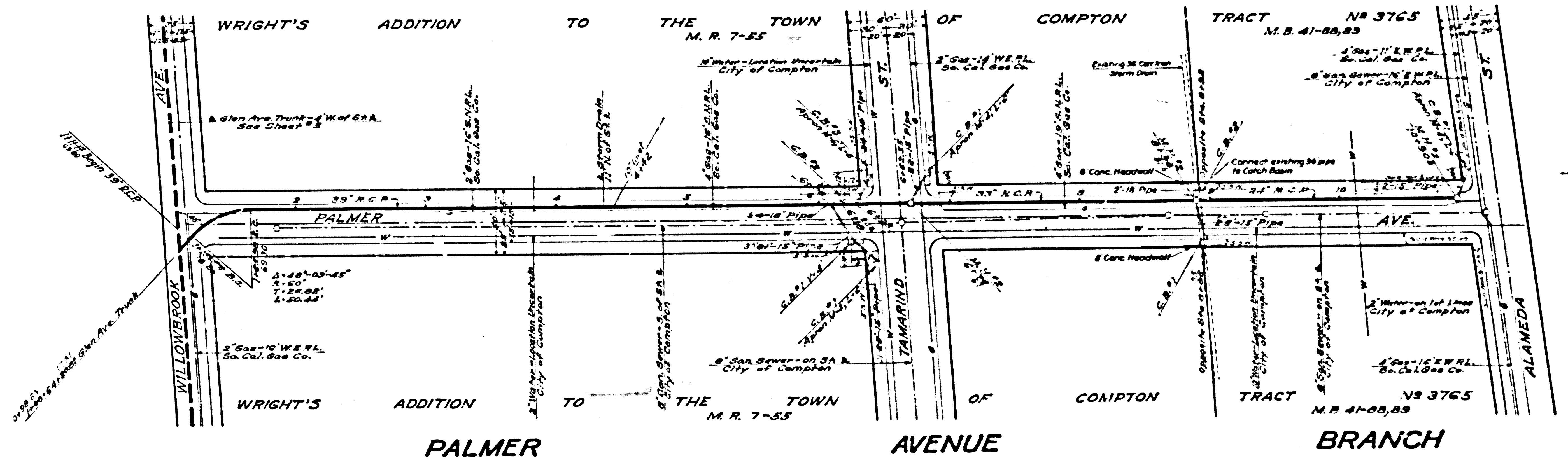
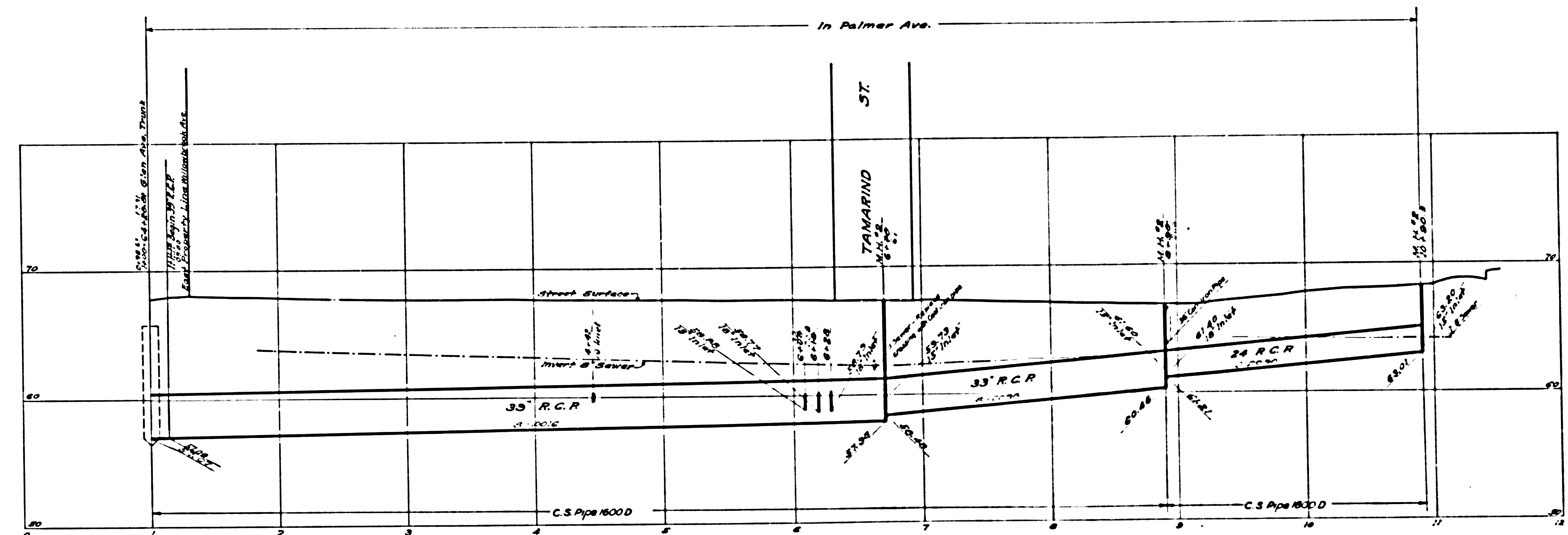


CSB-1171-13  
A7 OF A8



Trim prints to this line

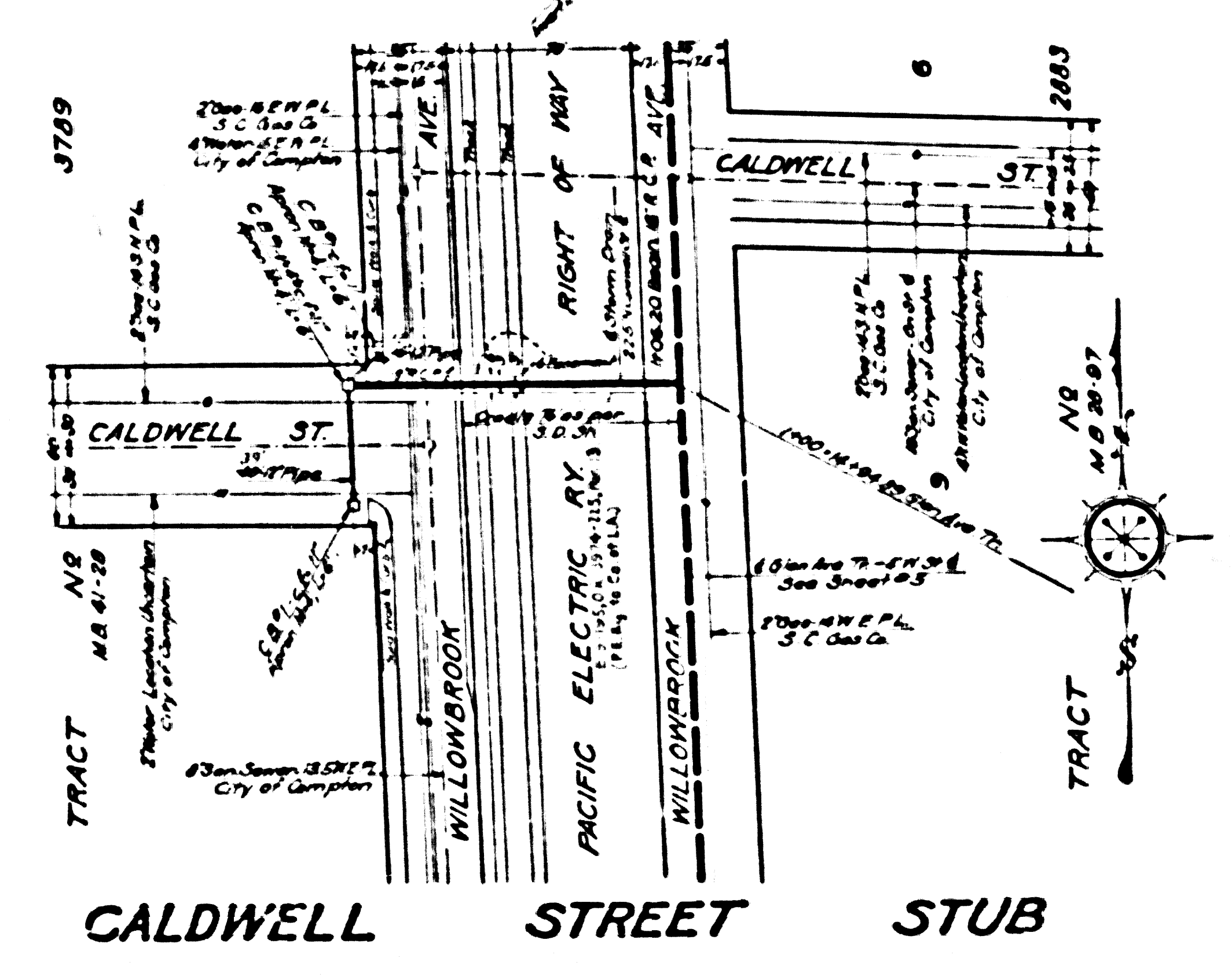
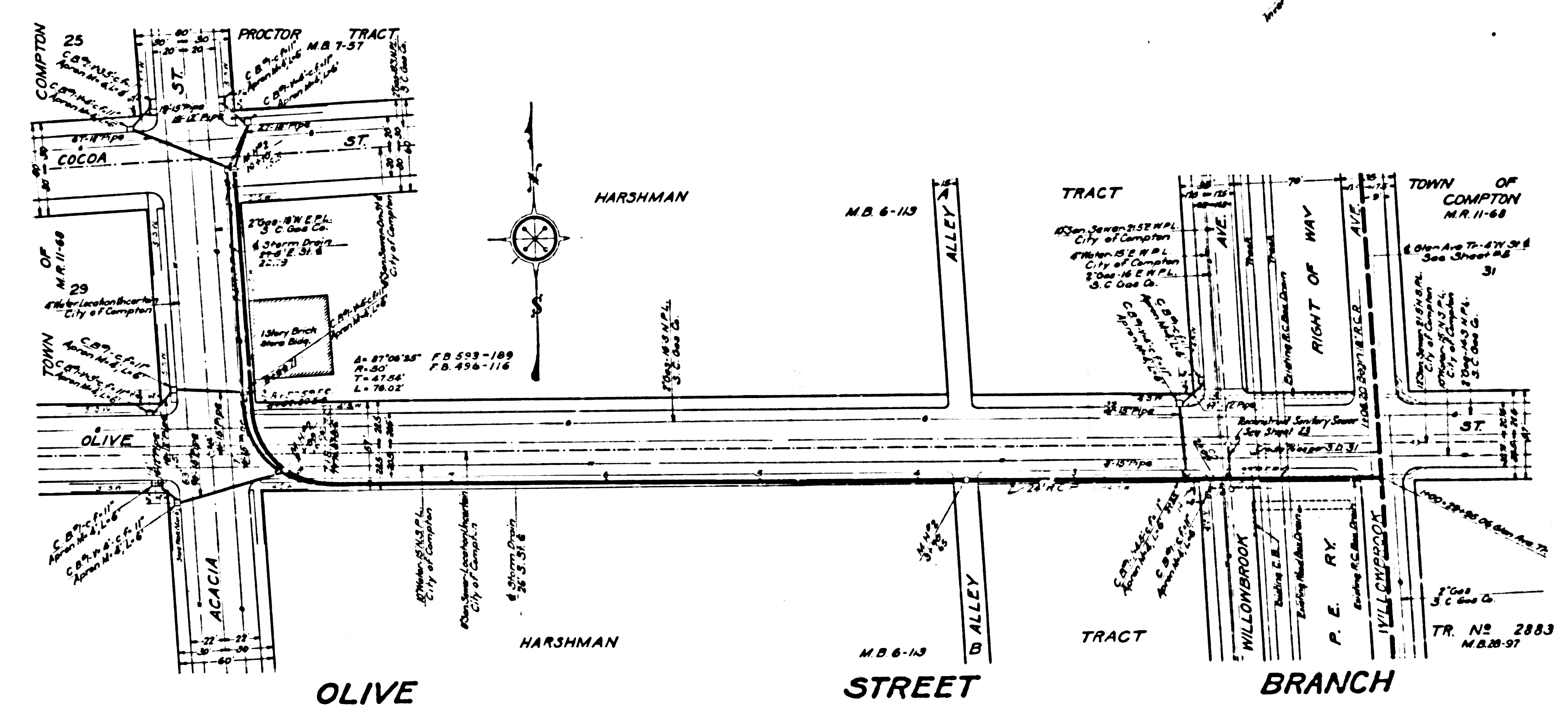
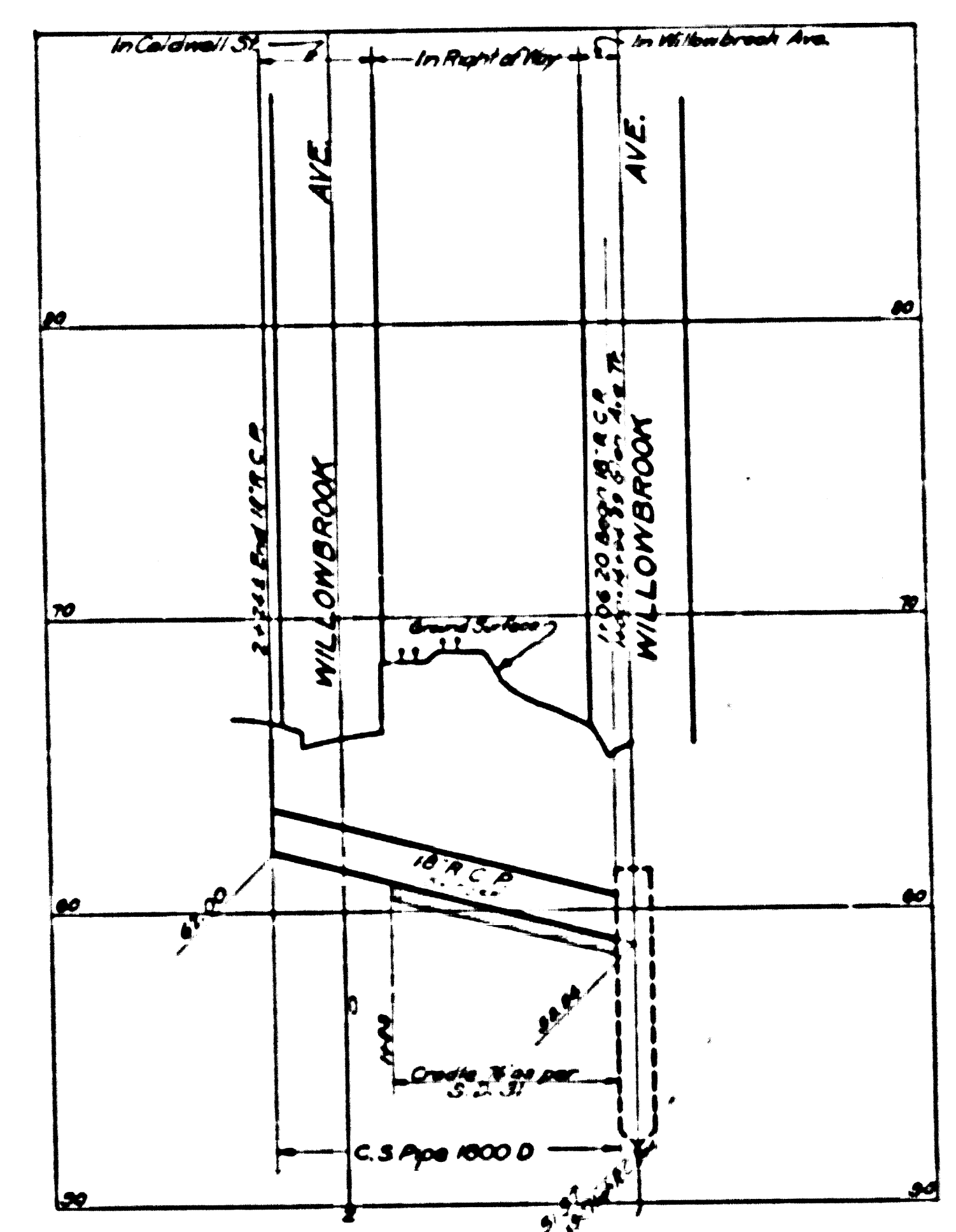
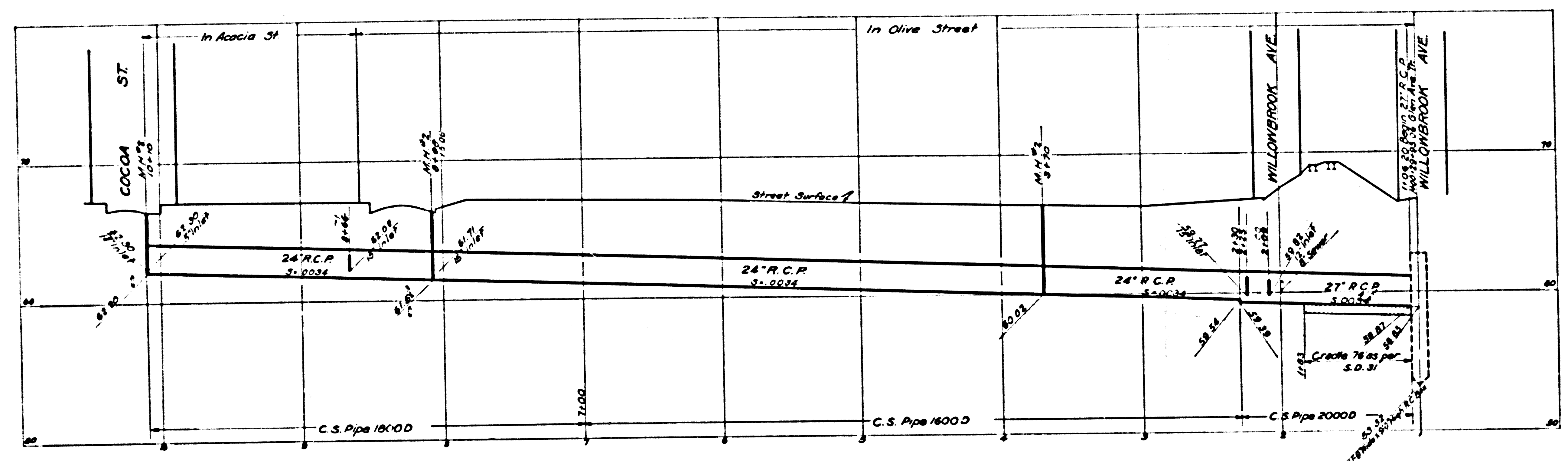
**INDEX**  
 Lines Shown on This Sheet  
 Reading from Left to Right  
**PLAN AND PROFILE**  
 PALMER AVE. BR.  
 ACACIA ST. BR.  
 SCHOOL ST. BR.  
 PALM ST. STUB  
 ALMOND ST. STUB  
 LAUREL ST. STUB  
 MYRRH ST. STUB  
 CYDRSS ST. STUB  
 OLIVE ST. BR.  
 CALDWELL ST. STUB



CSB-1171-13  
 A8 OF A8

Trim prints to this line





CSB-1171-13  
A2 OF A8



