

**GLEN AVENUE
DRAINAGE SYSTEM**
OF THE COUNTY OF LOS ANGELES, CALIFORNIA
PLAN AND PROFILE OF
WILMINGTON AVE. LINE
STA. 36+00 TO STA. 1+00
MONITOR AVE. BRANCH
WILLOWBROOK AVE. STUB
118TH. ST. BRANCH
SHEET 16 OF 26 SHEETS

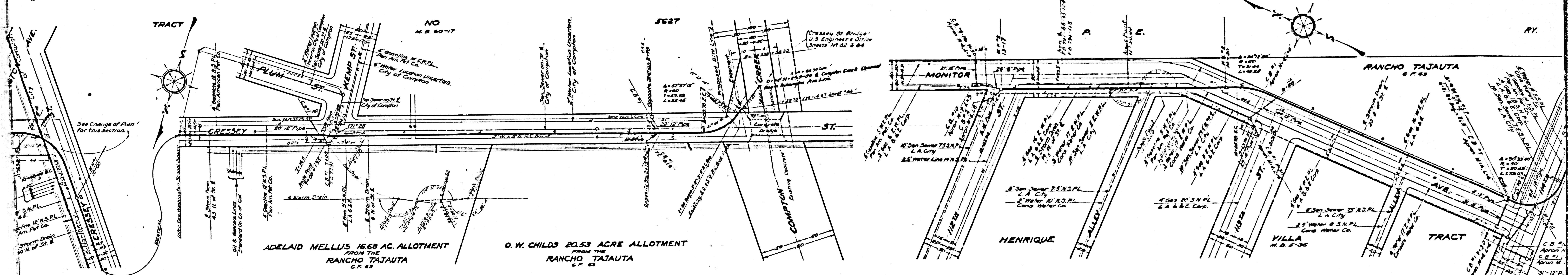
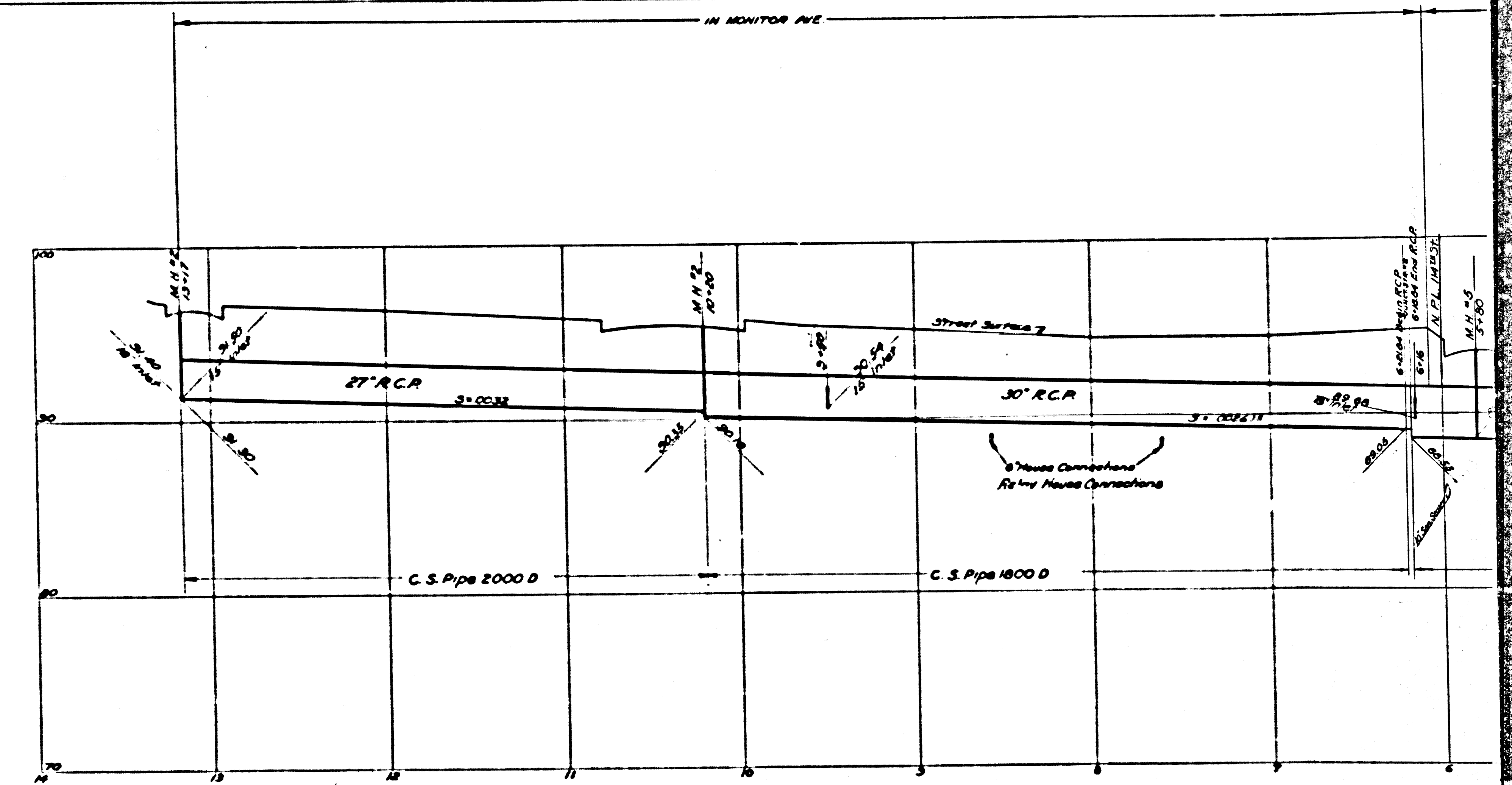
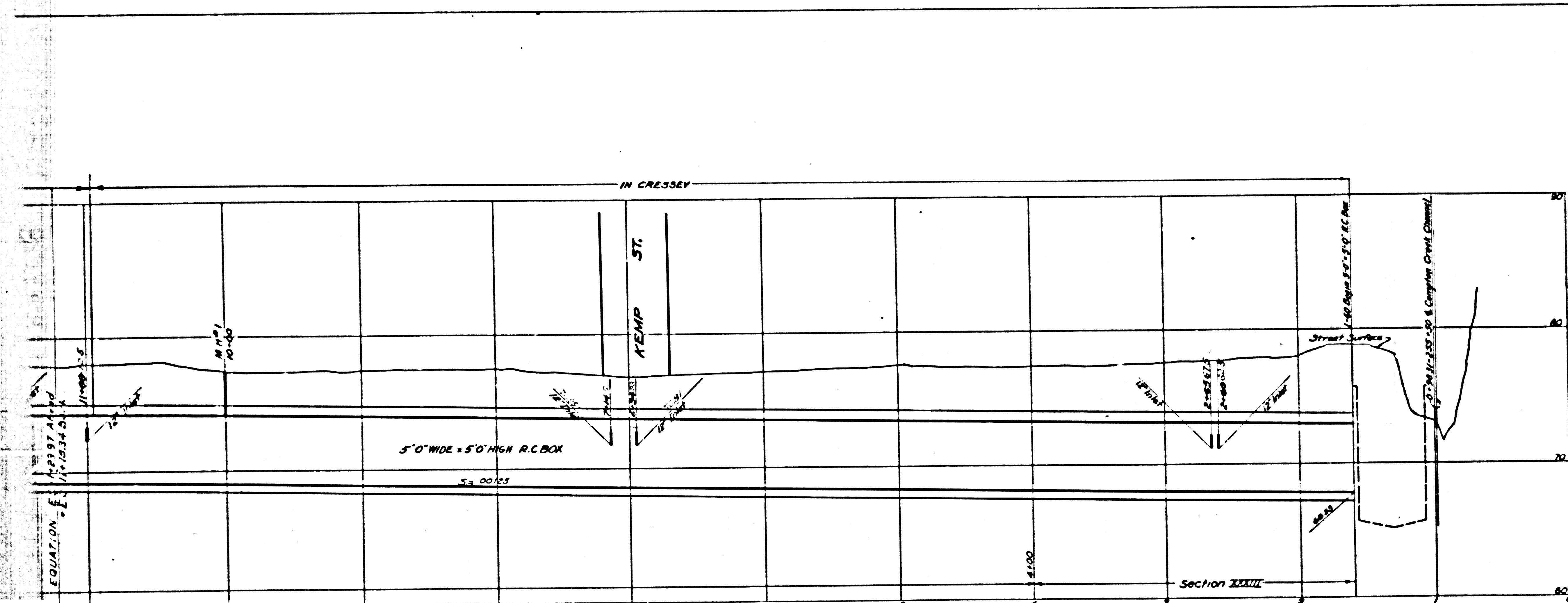
NOTES:
Elevations are in feet above USGS or mean Sea Level Datum.
Connector Pipes in Box Sections shall be laid in conjunction with Junction Structure No. 20000 (D.35) unless otherwise directed by the Construction Engineer.
Locations of inlets and junctions refer to the intersections of the center line of the inlets with the center line of the main drain.
Elevations of all inlets except catch basin inlets into box sections refer to the flow lines of the inlets produced on their gradients to the vertical plane thru the center line of the main drain. Elevations of catch basin inlets into box sections refer to the intersections of the flow lines of these inlets with the inside wall of the box section.
For details of all standard structures see Standard Plans.
All pipe not otherwise specified shall be plain cement pipe.
All shubs to be one length of pipe with ends sealed with 2" red wood planking unless otherwise specified.
Catch basins are to be built with a curb face of 10' or more which shall include a minimum depression at opening of 4" below gutter grade, unless otherwise specified.
Sanitary sewers crossing storm drains, shown in profile with less than 18" feet clearance, are to be encased as per S-2-6 for a length equal to the width of conduit branch in addition if less than 18" ft. clearance sewers must be of cast iron pipe and encased as noted above.

SCALE 1" = 20' NOVEMBER 1933
ALFRED JONES COUNTY SURVEYOR
RECOMMENDED [Signature] APPROVED [Signature]

REFERENCE	DESIGNED	J.L. Partin	MAR 1932
F. B. 496			
L. B. 581	TRACED	Dickens	AUG. 1934
	CHECKED	E.E. Mitchell	SEPT. 1934

CSB-1171-16
BRANCH
A1 OF A7

Unit #1 Unit #2



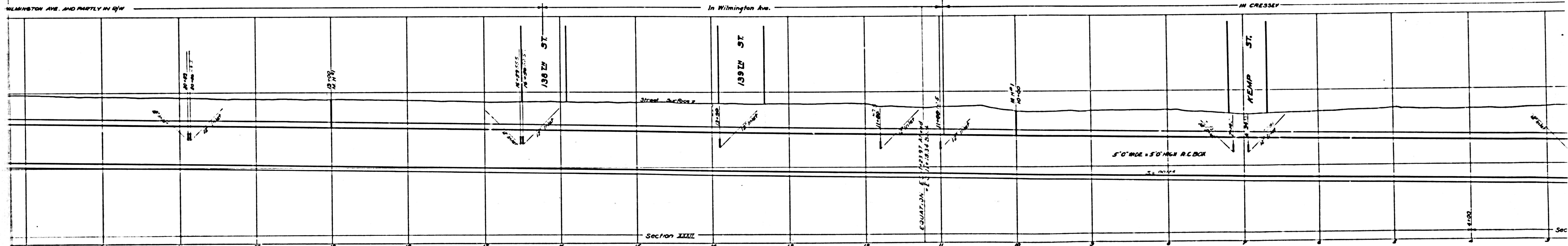
ADELAID MELLUS 16.68 AC. ALLOTMENT FROM THE RANCHO TAJAUTA C.P. 63

O. W. CHILDS 20.53 ACRE ALLOTMENT FROM THE RANCHO TAJAUTA C.P. 63

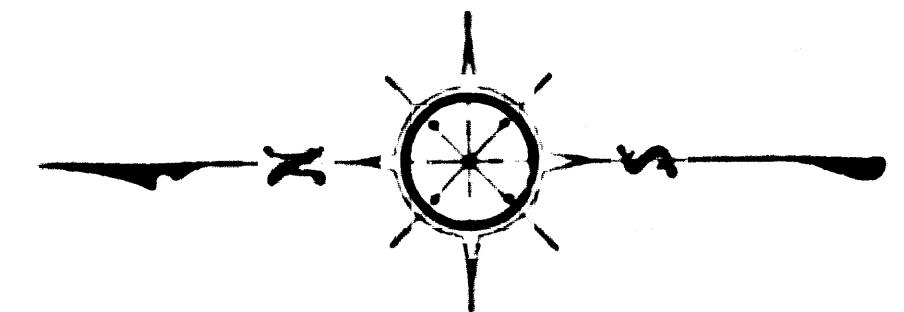
CSB-1171-16
A4 OF A7

MONITOR

AVE.



JOS MELLUS 18.71 ACRE ALLOTMENT
FROM THE
RANCHO TAJAUTA
C.R. 63



TR. NO. 3068
M.B. 18-25

TRACT
NO. 4431
M.B. 18-19

TRACT
NO. 4431
M.B. 18-19

TRACT

TRACT
NO. 4431
M.B. 18-19

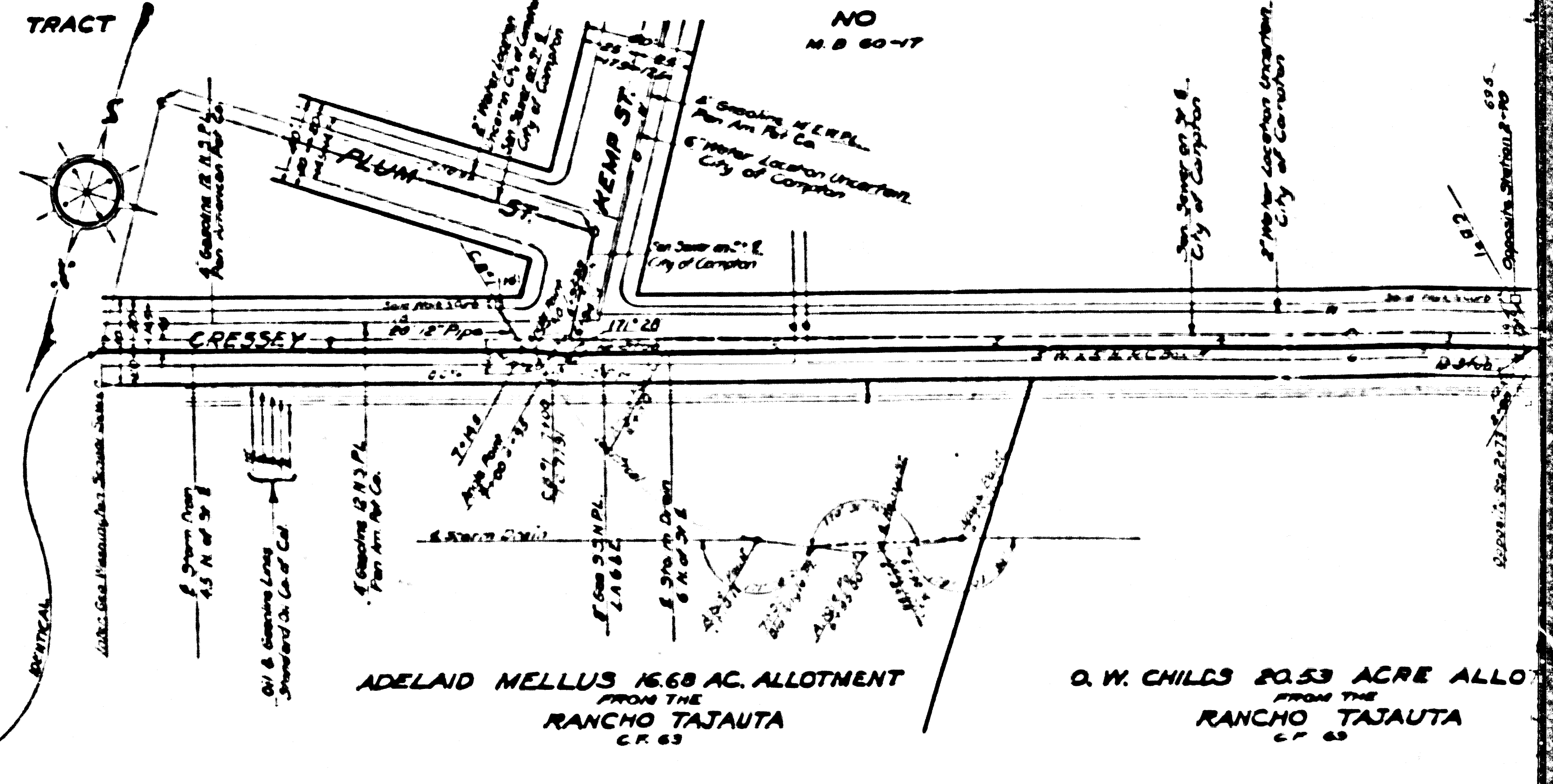
Proposed Widening Line 1
M.H. 10-10
E. Equipment
NO
M.B. 40-36, 37
AVE.

3626
LINE

ADELAIDE MELLUS 1668 ACRE ALLOTMENT
FROM THE
RANCHO TAJAUTA
C.R. 63

EQUATION: $3.54117391 \text{ Arcsec}$
 42.0717331 Equal
Oil & Gas Line
Shoreland Oil Co. of Cal.
E. Gas 3" N.P.L.
S.A.G. 8"
E. Gas 12" N.P.L.
Plan 101-101-101
8" Storm Drain
450 ft. of Str. 8

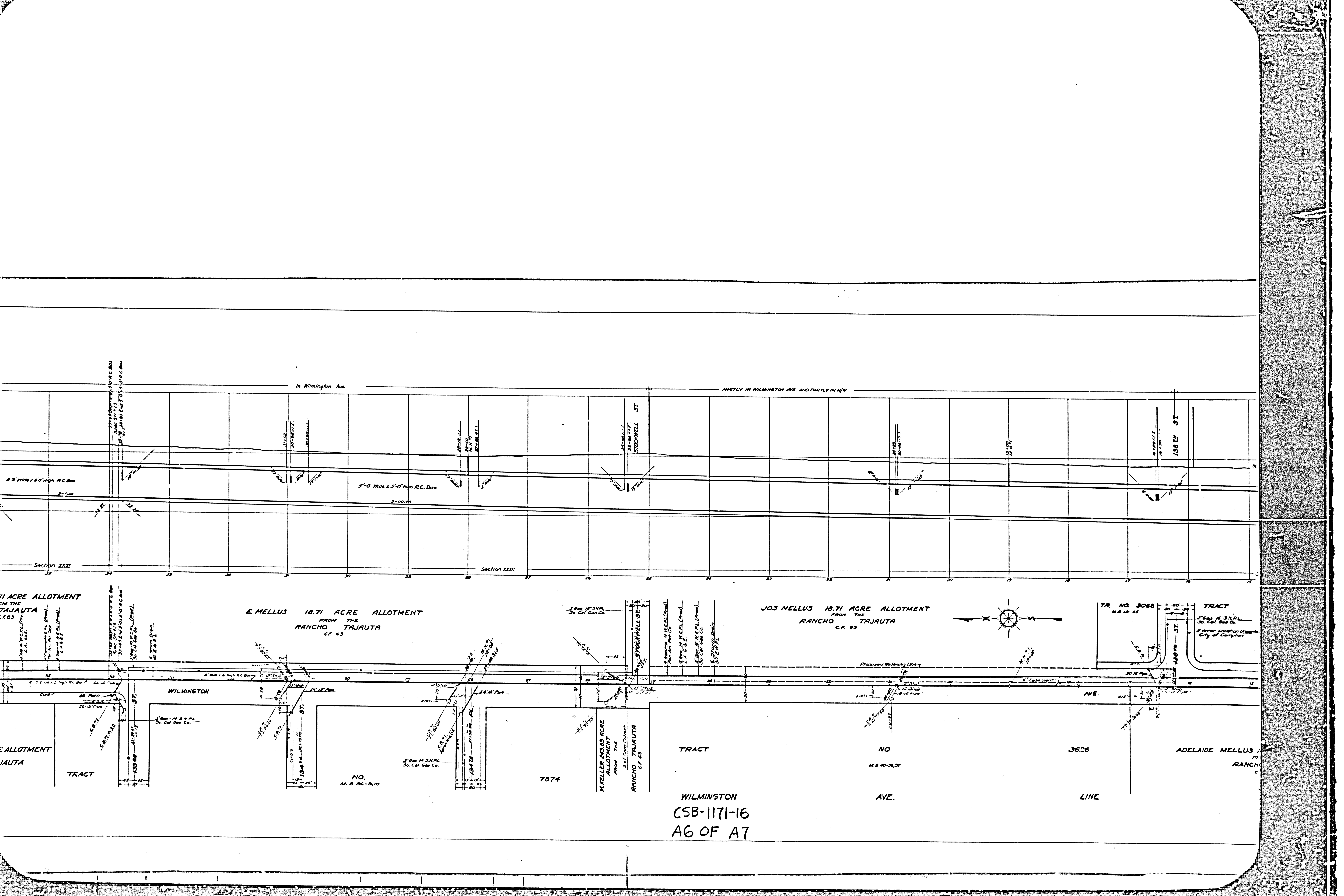
See Change of Plan
for this section



ADELAIDE MELLUS 1668 AC. ALLOTMENT
FROM THE
RANCHO TAJAUTA
C.R. 63

D.W. CHILDS 80.53 ACRE ALLO
FROM THE
RANCHO TAJAUTA
C.R. 63

CSB-1171-16
A5 OF A7

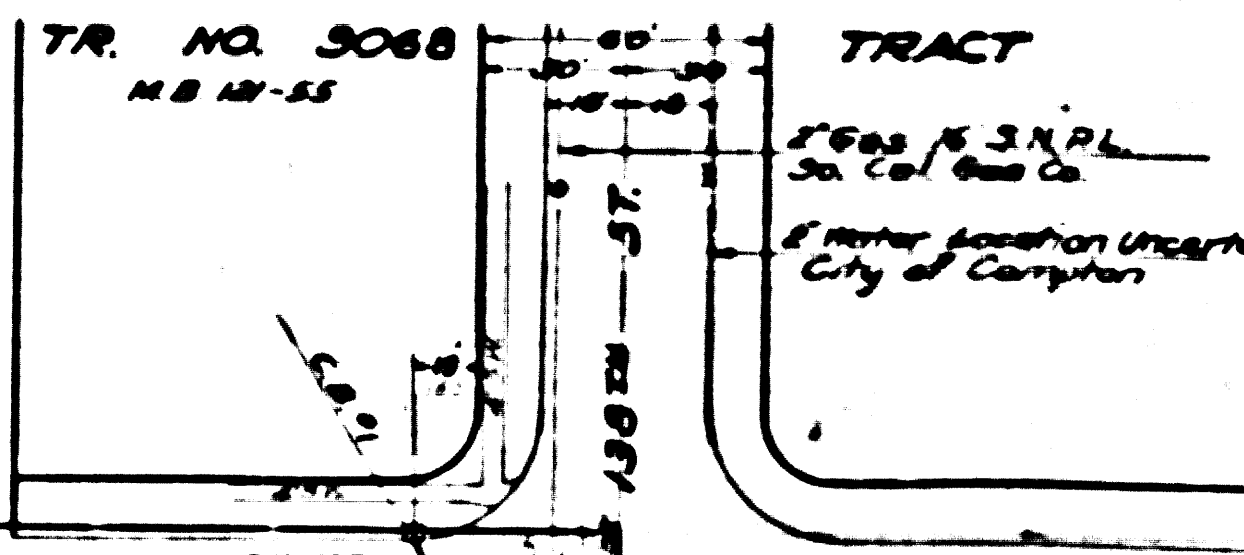
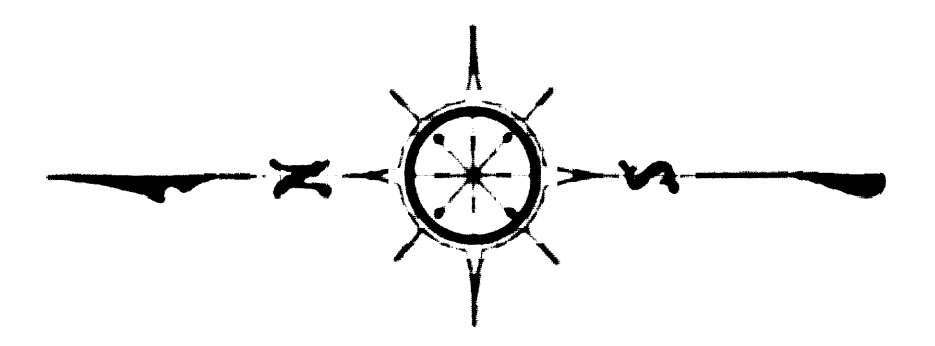


In Wilmington Ave.

PARTLY IN WILMINGTON AVE. AND PARTLY IN R/W

E. MELLUS 18.71 ACRE ALLOTMENT FROM THE RANCHO TAJAUTA C.F. 63

JOS NELLUS 18.71 ACRE ALLOTMENT FROM THE RANCHO TAJAUTA C.F. 63



WILMINGTON

AVE.

WILMINGTON CSB-1171-16 A6 OF A7

NO. M.B. 36-3,10

7874

NO M.B. 40-36,37

3626

ADELAIDE MELLUS RANCHO

AVE.

LINE

18.71 ACRE ALLOTMENT FROM THE RANCHO TAJAUTA C.F. 63

18.71 ACRE ALLOTMENT FROM THE RANCHO TAJAUTA C.F. 63

M. KELLER 18.03 ACRE ALLOTMENT FROM THE RANCHO TAJAUTA C.F. 63

Section XXXI

Section XXXII

4 1/2" Wide x 5'-0" High R.C. Box

5'-0" Wide x 5'-0" High R.C. Box

138th ST

STOCKWELL ST

STOCKWELL ST

36" M.S.N.P.L. 30 Cal Gas Co.

36" M.S.N.P.L. 30 Cal Gas Co.

36" M.S.N.P.L. 30 Cal Gas Co.

TR. NO. 3068 M.B. 10-55

36" M.S.N.P.L. 30 Cal Gas Co.

36" M.S.N.P.L. 30 Cal Gas Co.

36" M.S.N.P.L. 30 Cal Gas Co.

36" M.S.N.P.L. 30 Cal Gas Co.

36" M.S.N.P.L. 30 Cal Gas Co.

36" M.S.N.P.L. 30 Cal Gas Co.

Proposed Widening Line

M.N.P.L. 15" Dia.

E. Gasmain

30" Dia.

4 1/2" Wide x 5'-0" High R.C. Box

4 1/2" Wide x 5'-0" High R.C. Box

4 1/2" Wide x 5'-0" High R.C. Box

4 1/2" Wide x 5'-0" High R.C. Box

4 1/2" Wide x 5'-0" High R.C. Box

4 1/2" Wide x 5'-0" High R.C. Box

4 1/2" Wide x 5'-0" High R.C. Box

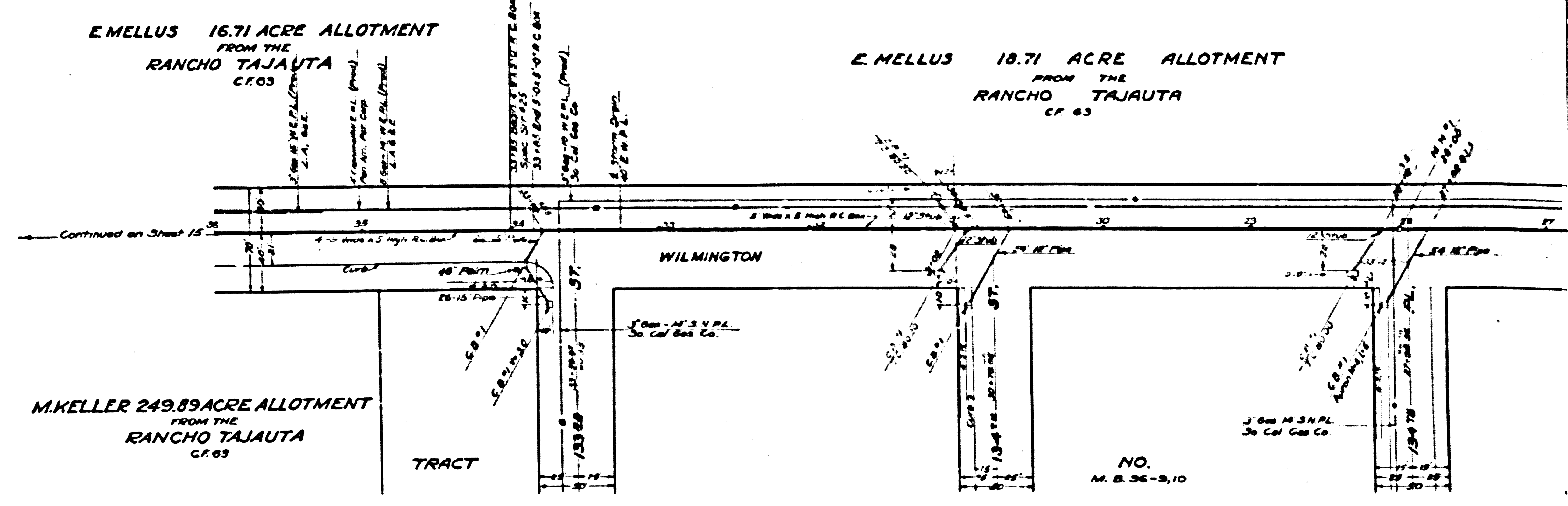
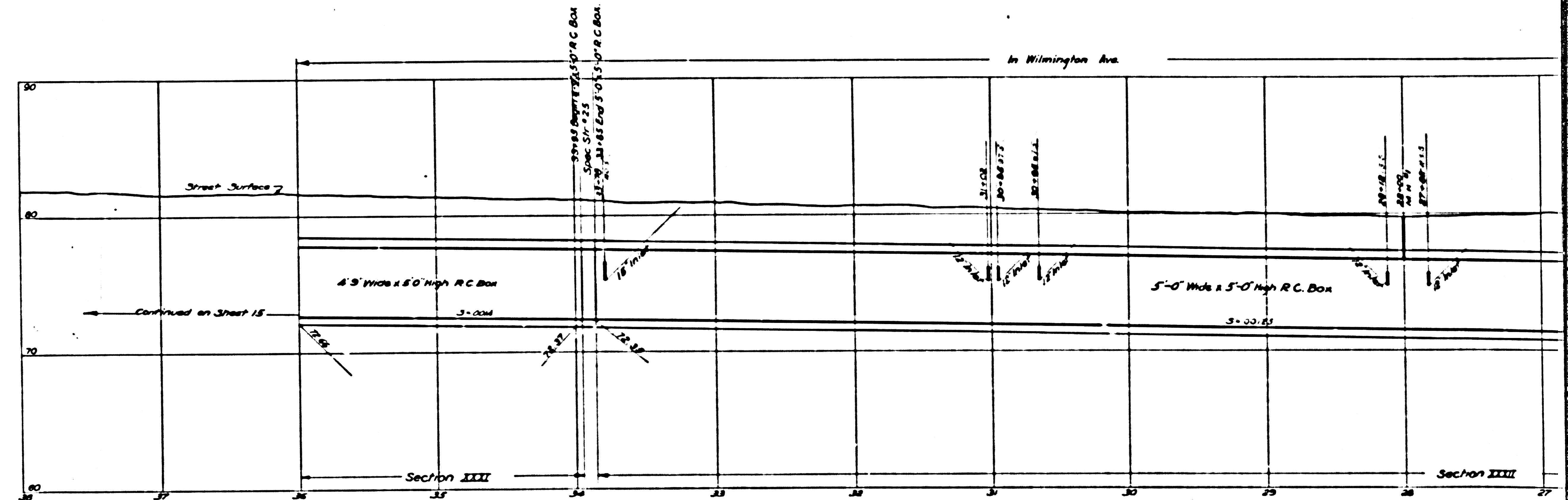
4 1/2" Wide x 5'-0" High R.C. Box

4 1/2" Wide x 5'-0" High R.C. Box

4 1/2" Wide x 5'-0" High R.C. Box

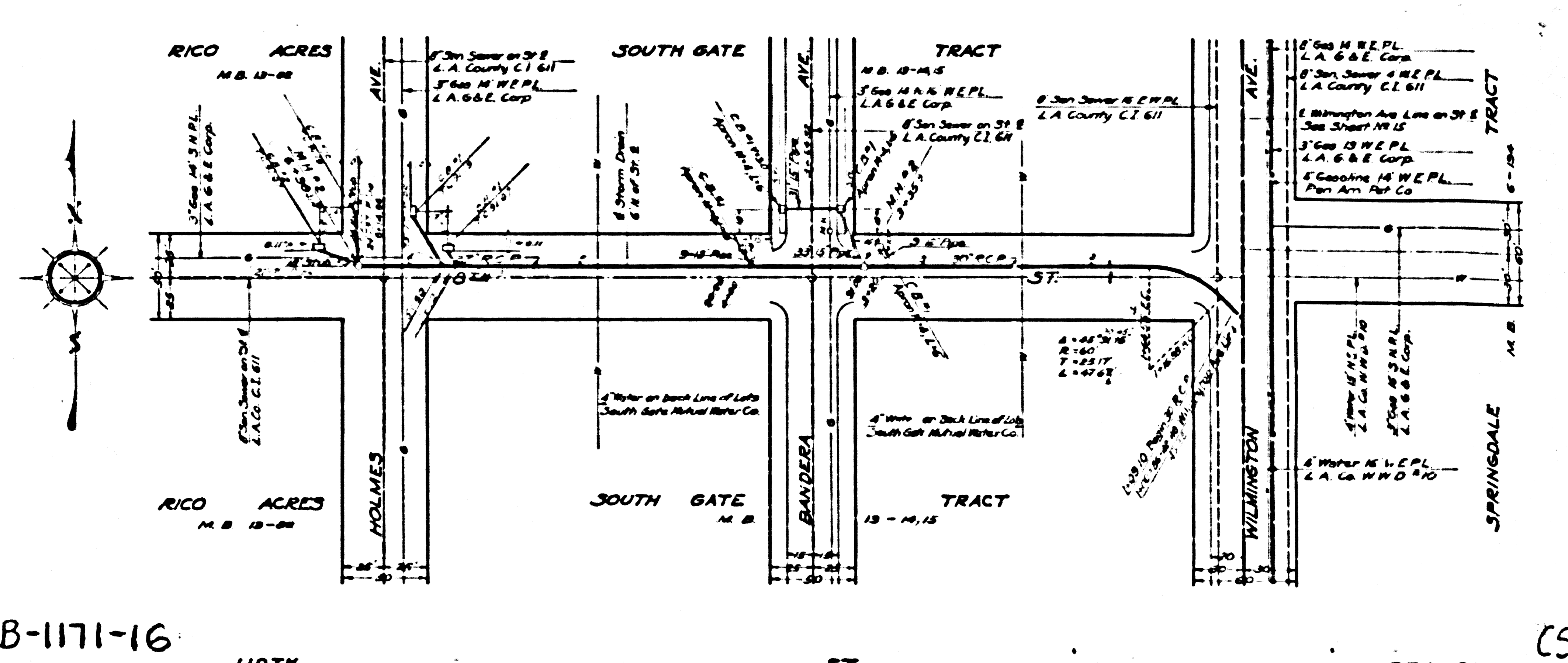
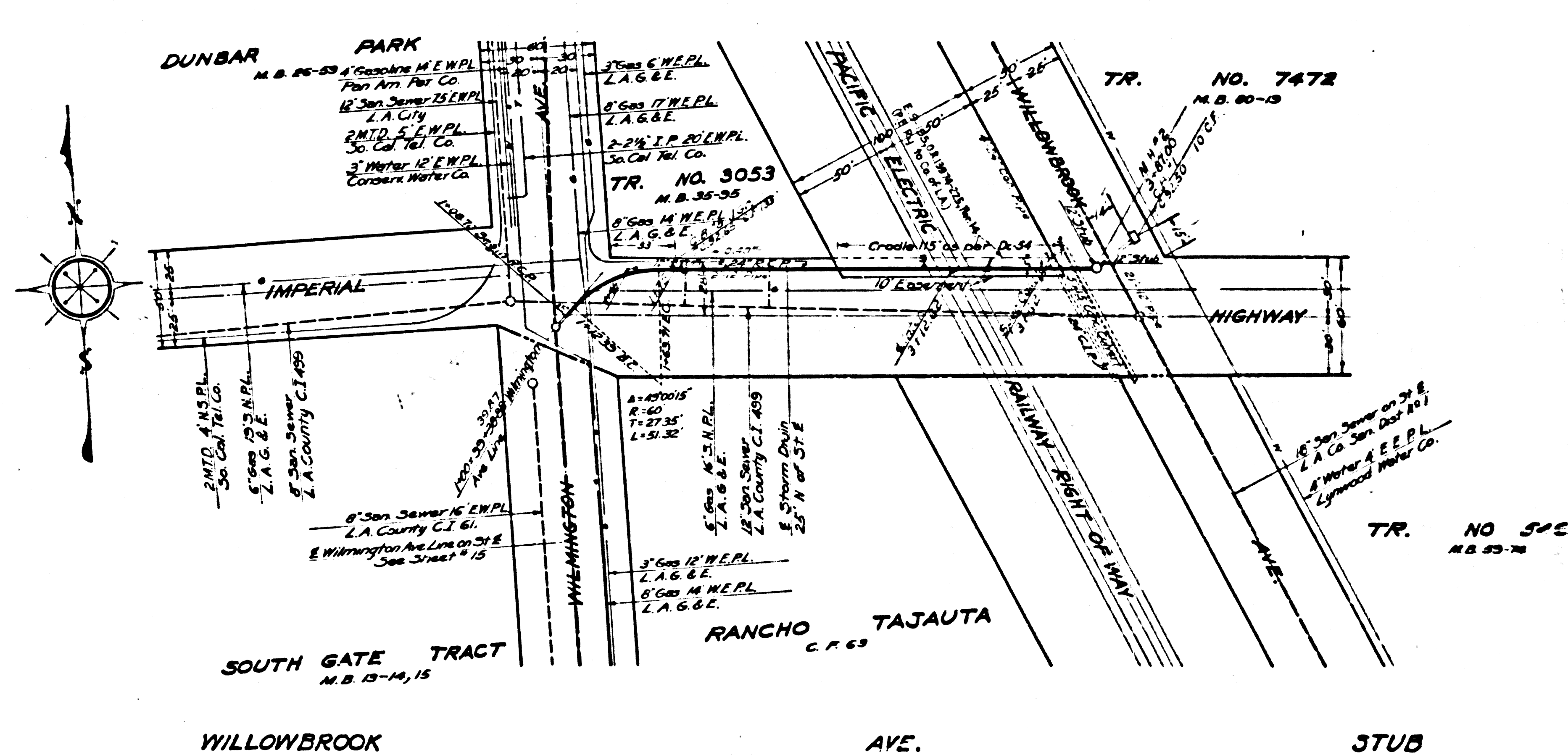
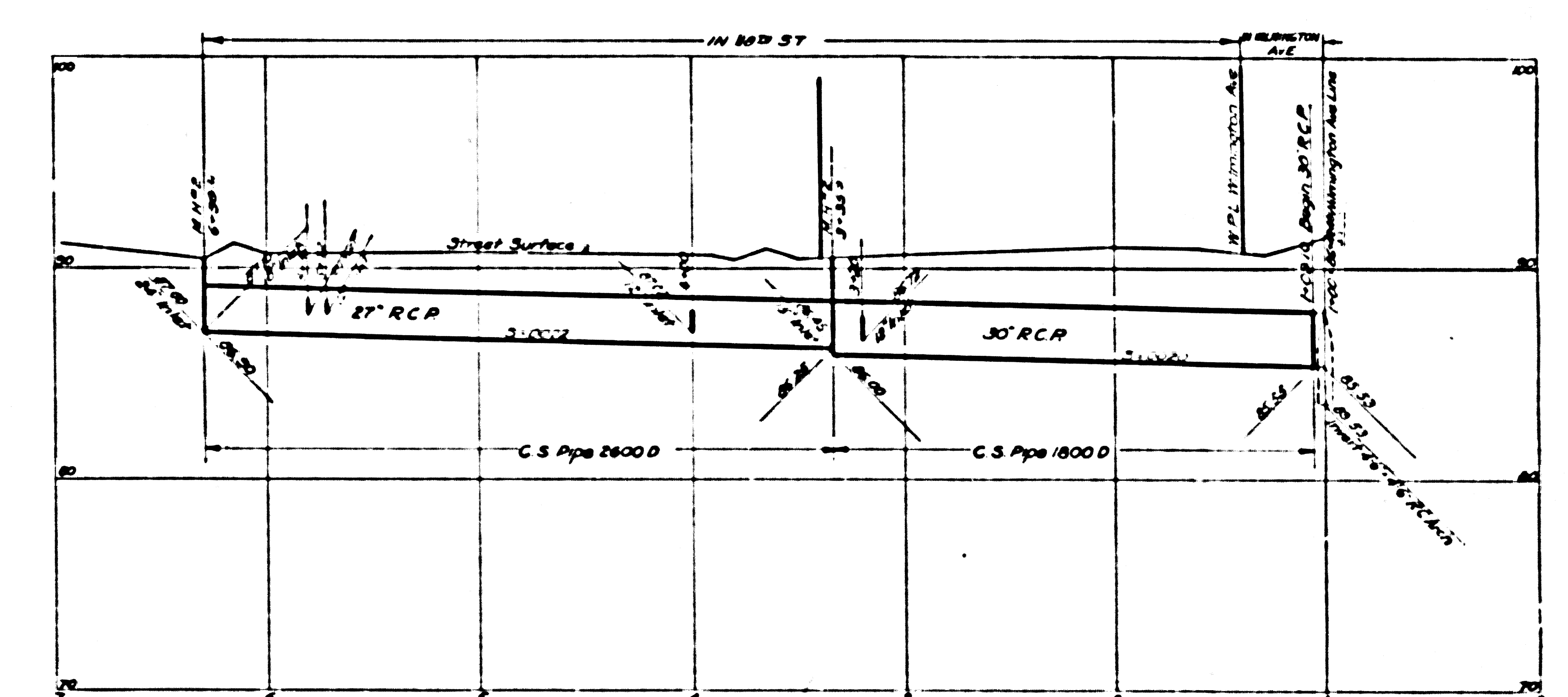
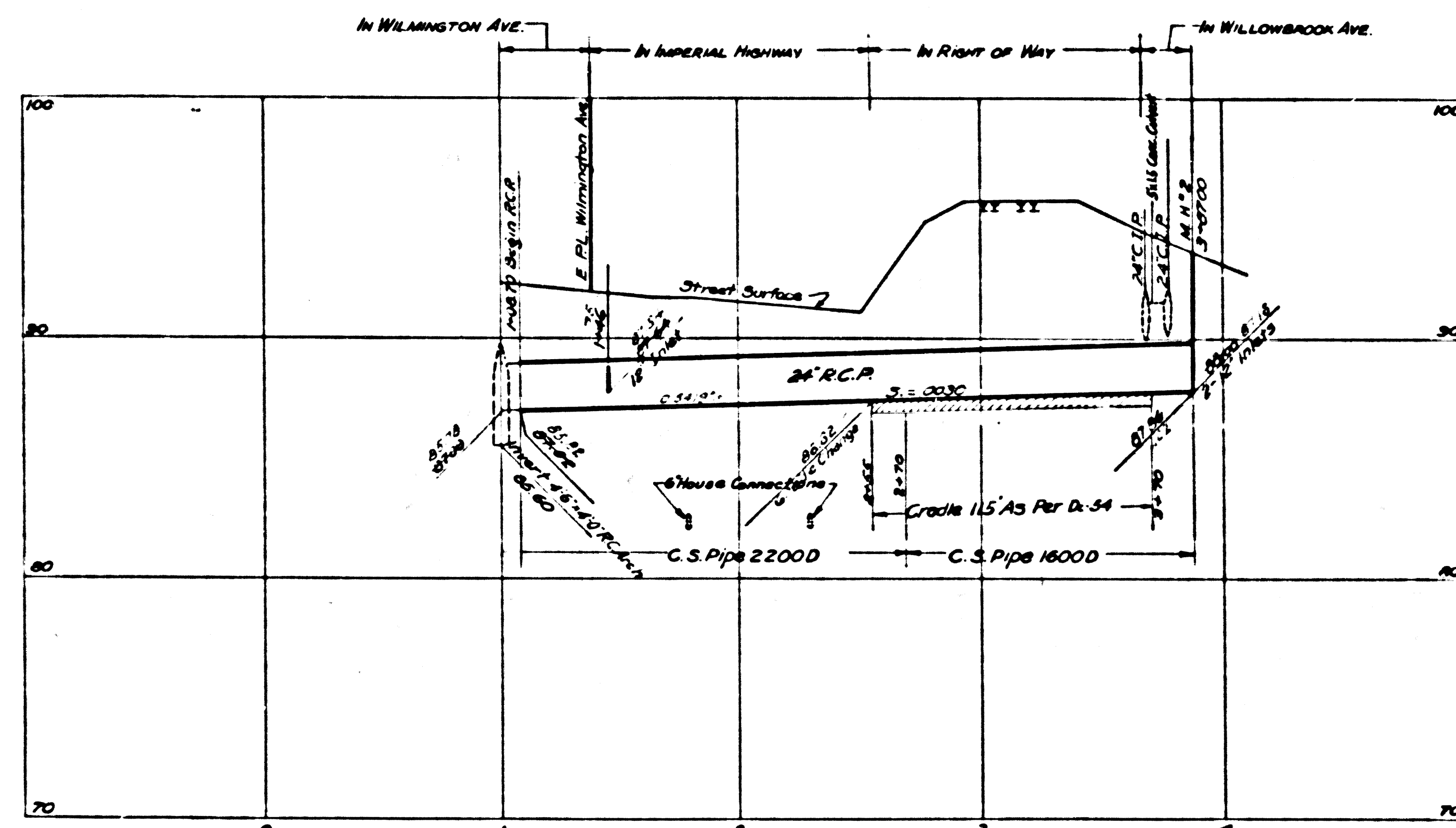
4 1/2" Wide x 5'-0" High R.C. Box

INDEX
 Lines Shown on This Sheet
 Reading From Left to Right
 WILMINGTON AVE. LINE
 MONITOR AVE. BRANCH
 WILLOWBROOK AVE. STUB
 11824 ST. BRANCH

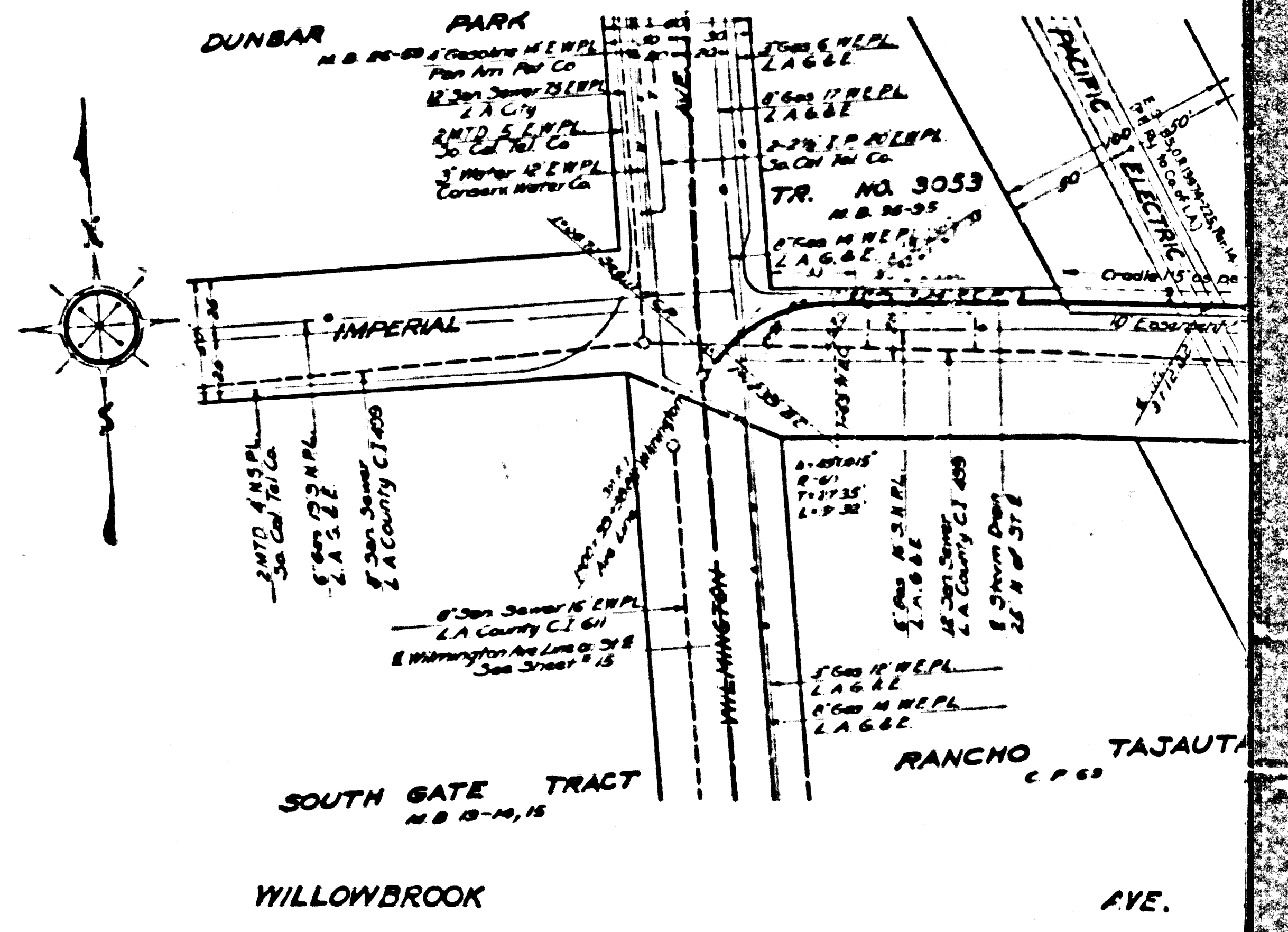
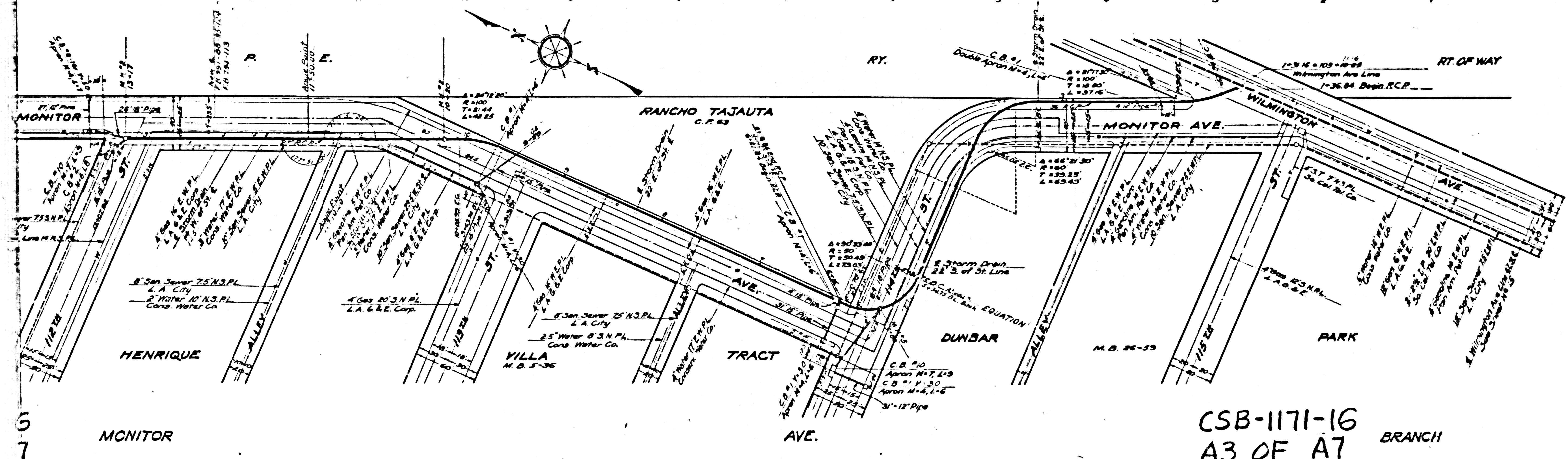
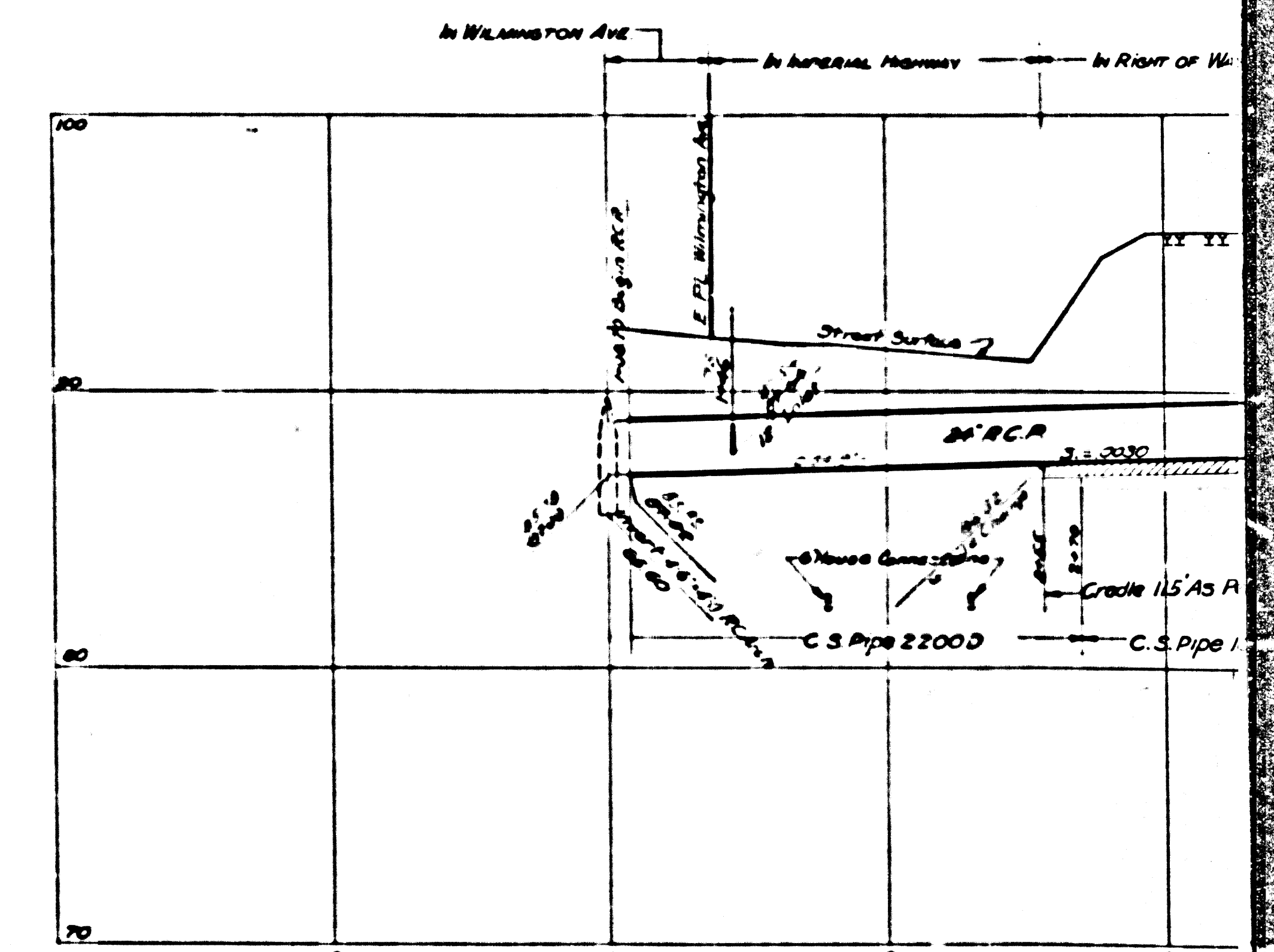
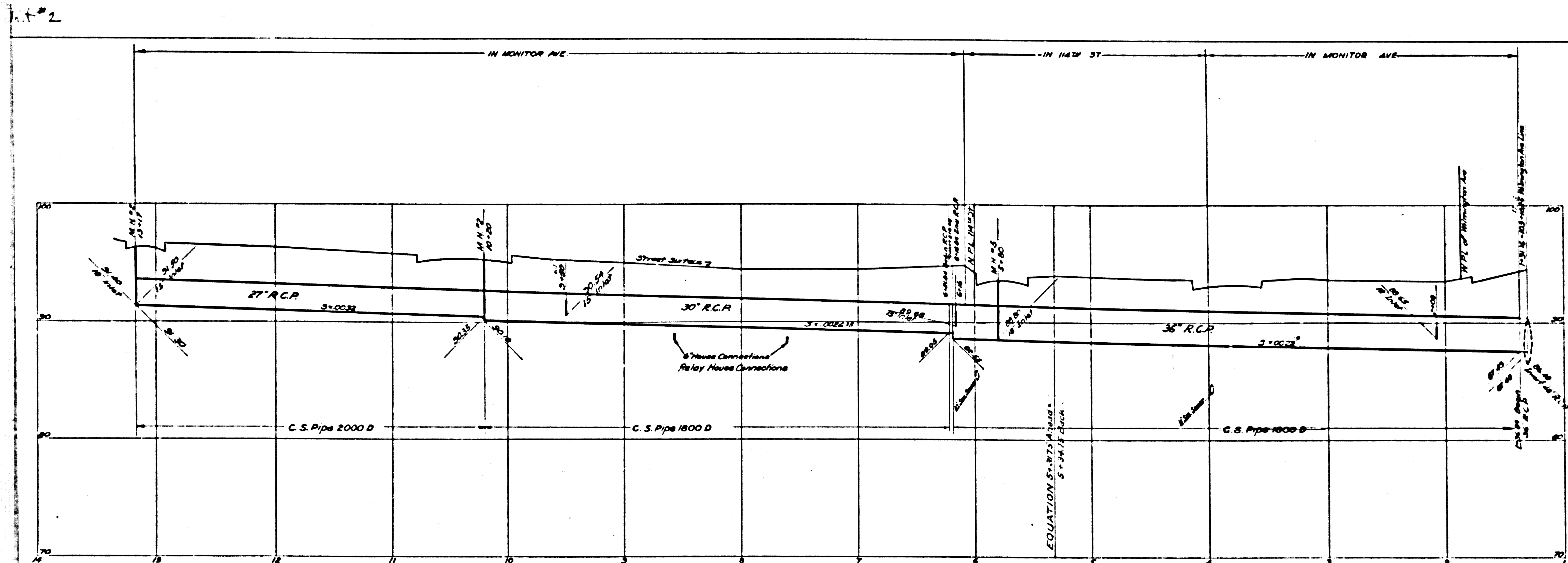


CSB-1171-16
 A7 OF A7

Unit # 2 | Unit # 1



CSB-1171-16
A2 OF A7
118TH ST.
BRANCH



CSB-1171-16
A3 OF A7 BRANCH

5
7