

Longitudinal Steel 40 Bars $\frac{1}{2}$ " ϕ

NOTES:
Elevations are in feet above U.S.G.S. or mean Sea Level Datum.
All Reinforced Concrete shall be Class "A" concrete unless otherwise specified.
Dimensions for depths of Reinforcing Steel are from face of concrete to center of bars.
Reinforcing Bars shall be round deformed bars of intermediate grade billet steel or rail steel unless otherwise specified and at all splices shall be lapped 36 bar diameters.
Reviewed for Corrections August 1941 A.T. Hinnard

GLEN AVENUE DRAINAGE SYSTEM

OF THE COUNTY OF LOS ANGELES, CALIFORNIA

DETAILS OF SPECIAL STRUCTURE NO. 26

GLEN AVENUE TRUNK
STATION 105+30.50 TO STATION 105+46

SHEET 22A OF 26 SHEETS

SCALE AS SHOWN

SEPT. 1937

ALFRED JONES - COUNTY SURVEYOR

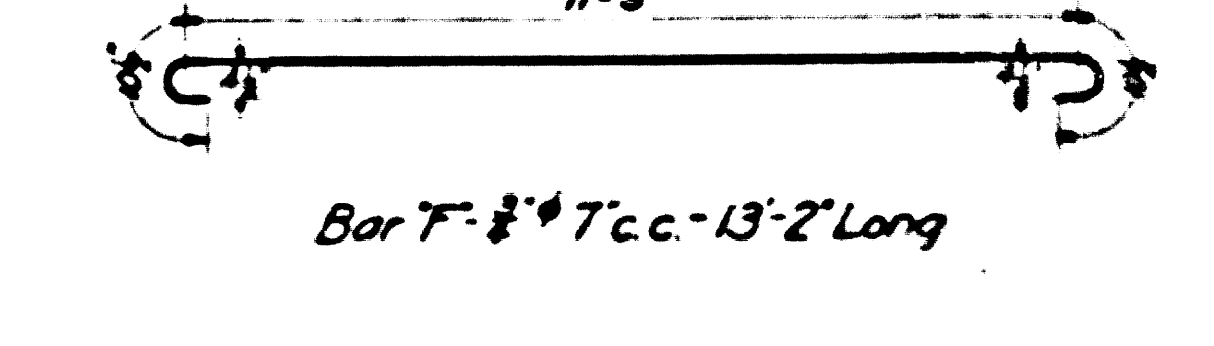
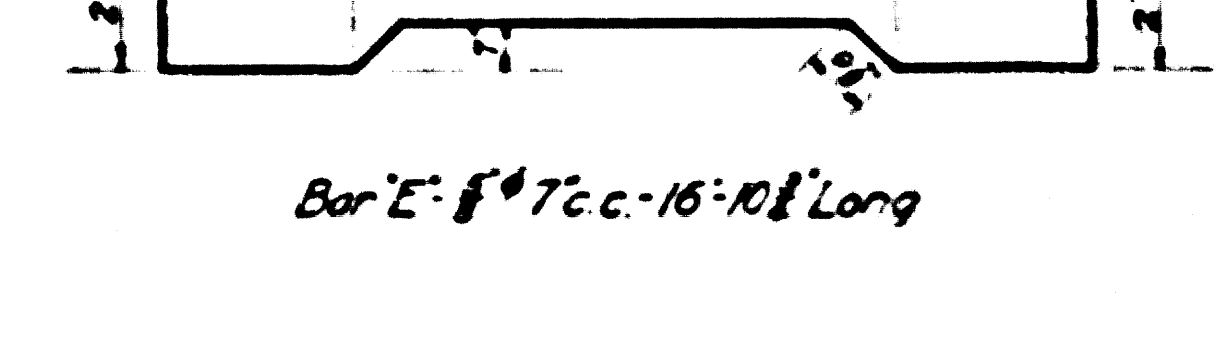
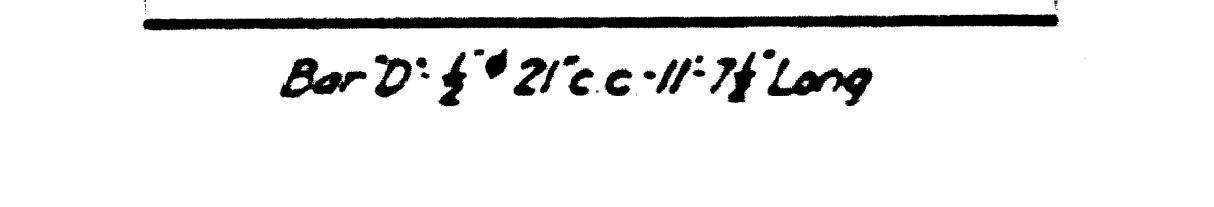
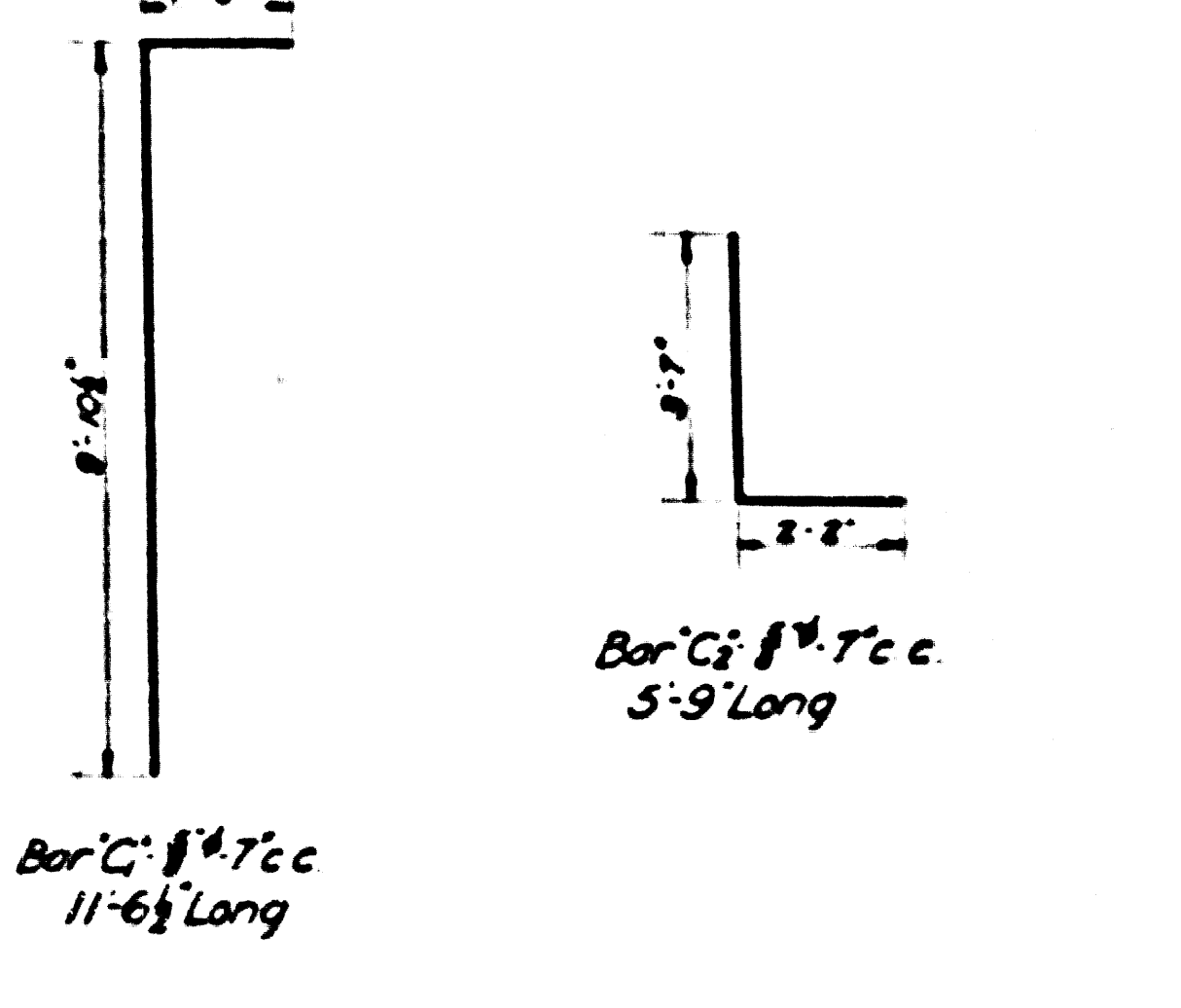
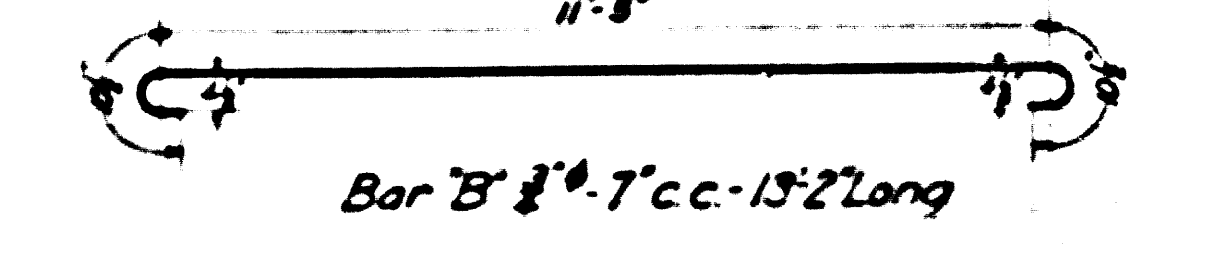
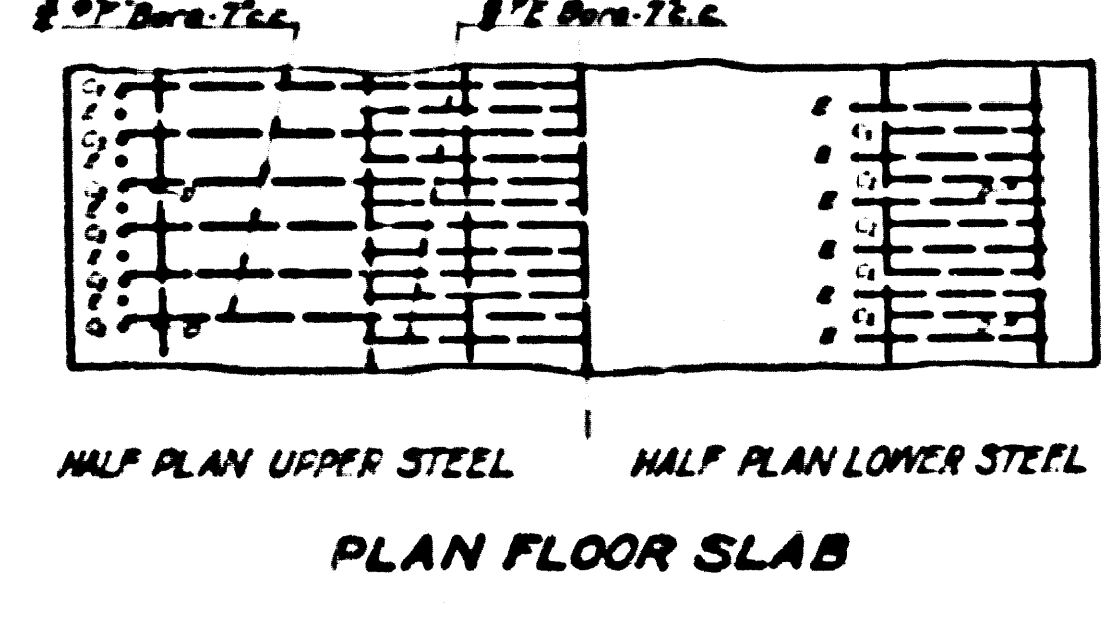
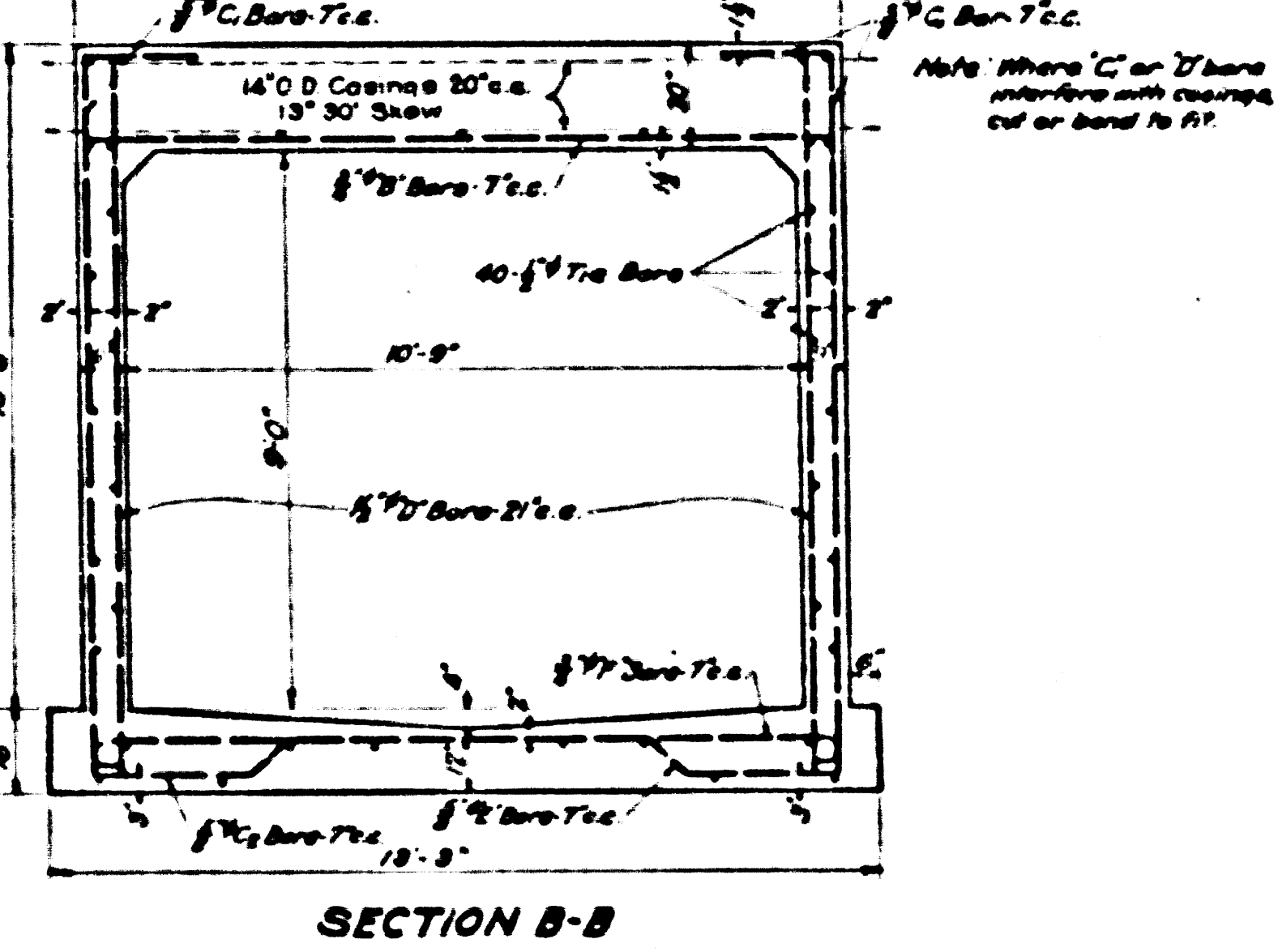
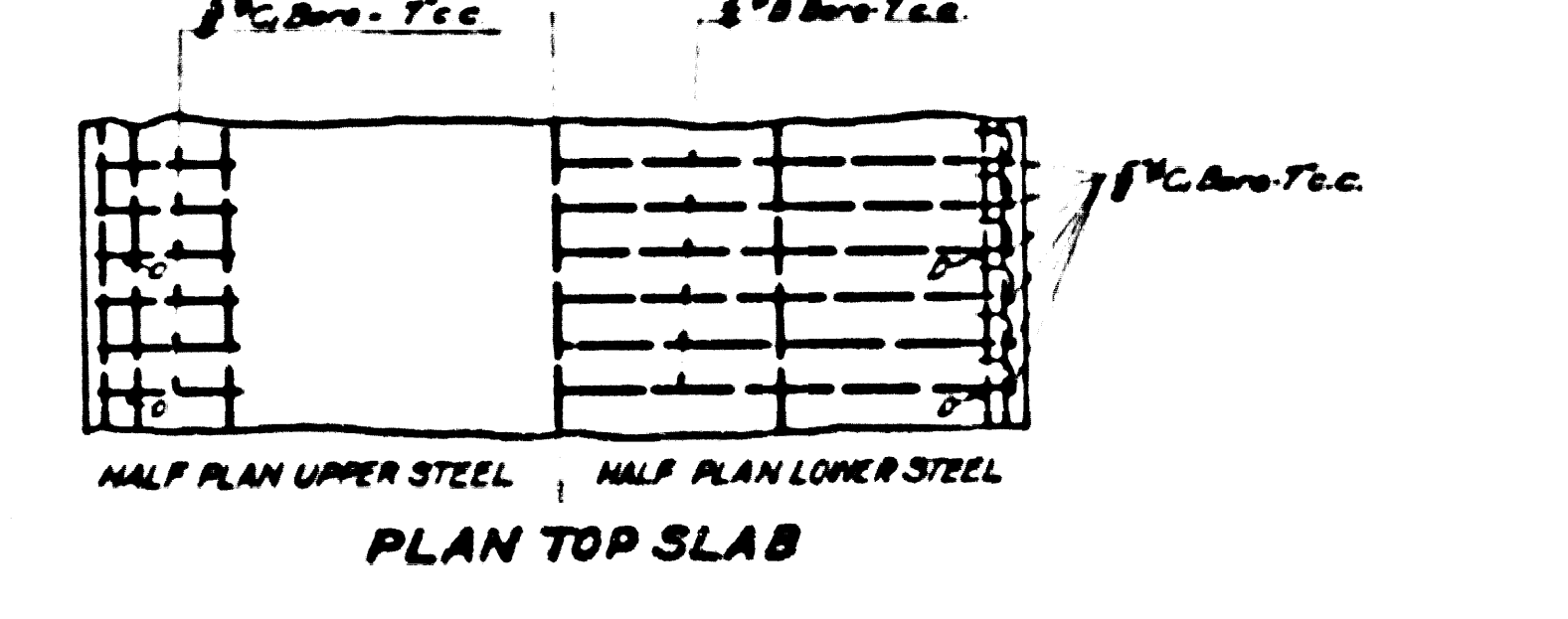
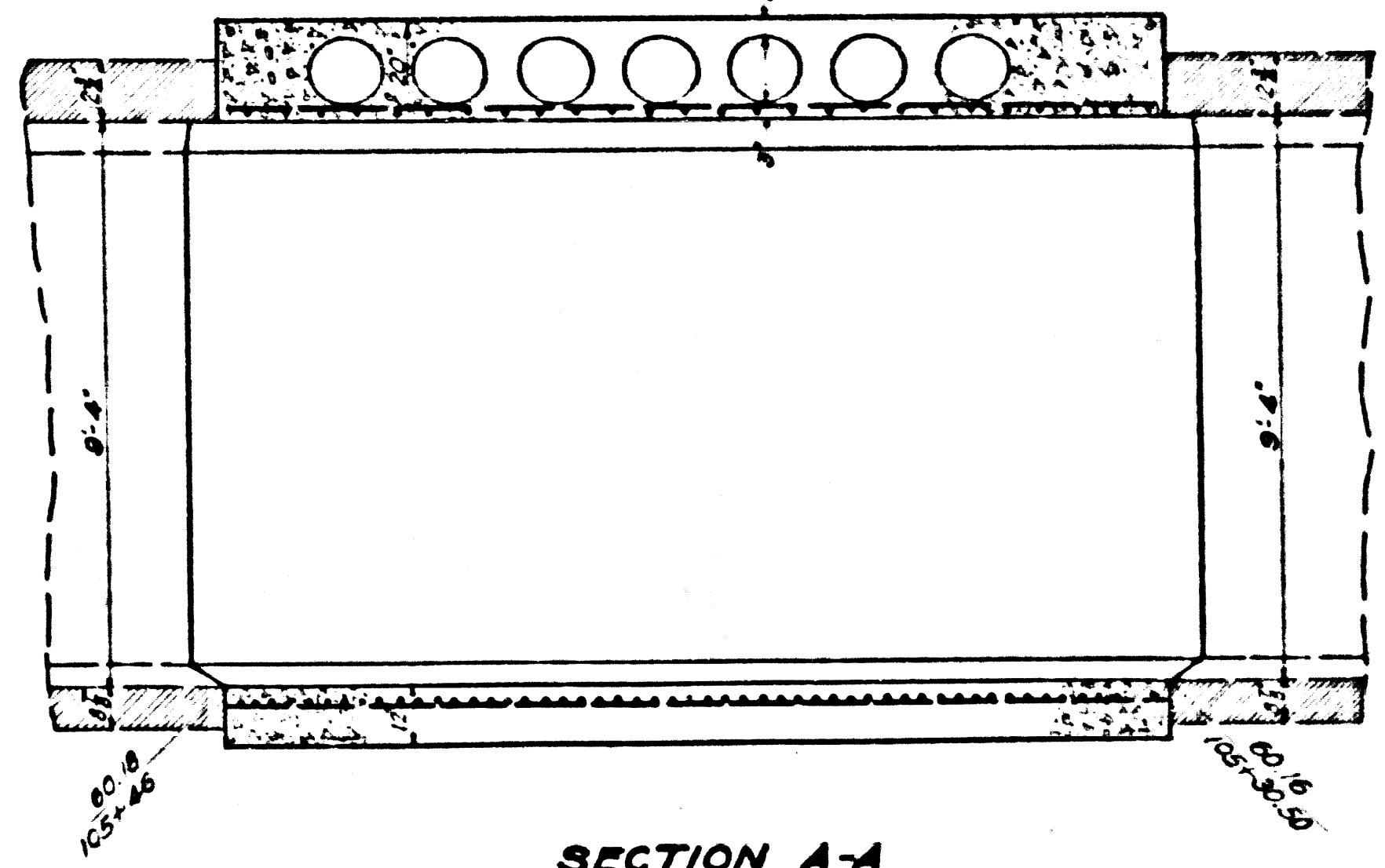
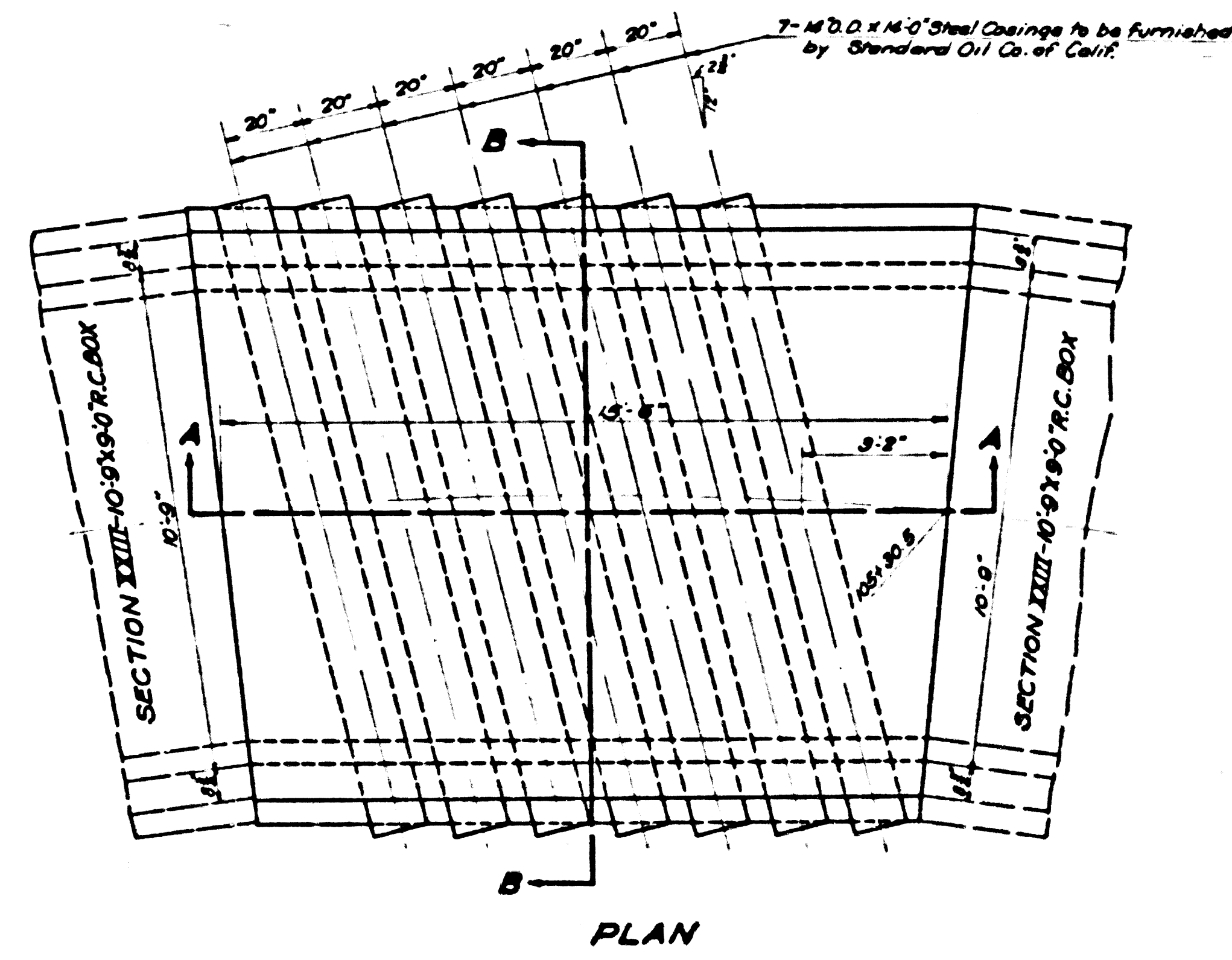
RECOMMENDED *E. E. ...* APPROVED *Alfred Jones*

SPECIAL STRUCTURE NO. 26
GLEN AVE. TRUNK STATION 105+30.5
SCALE $\frac{1}{4}$ " = 1'-0"

CSB-1171-22A
A1 OF A2

REFERENCE	DE-SIGNED	L. B. HERR	SEAL 1937
	TRACED	R. I. HERRICK	SEAL 1937
	CHECKED	L. L. LANGRISH	SEAL 1937

22A



Longitudinal Steel 40 Bars #4

SPECIAL STRUCTURE NO. 26
 GLEN AVE. TRUNK STATION 05+30.5
 SCALE 3/8" = 1'-0"

CSB-1171-22A
 A2 OF 2A